

Acta Crystallographica Section E

**Structure Reports**
**Online**

ISSN 1600-5368

# 5-Hydroxy-7-methoxy-4*H*-chromen-4-one

 Iván Brito,<sup>a\*</sup> Jorge Bórquez,<sup>a</sup> Luis Alberto Loyola<sup>a</sup> and Matías López-Rodríguez<sup>b</sup>

<sup>a</sup>Departamento de Química, Facultad de Ciencias Básicas, Universidad de Antofagasta, Casilla 170, Antofagasta, Chile, and <sup>b</sup>Instituto de Bio-Orgánica 'Antonio González', Universidad de La Laguna, Astrofísico Francisco Sánchez No. 2, La Laguna, Tenerife, Spain

Correspondence e-mail: ivanbritob@yahoo.com

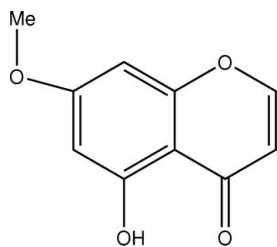
Received 30 November 2007; accepted 11 December 2007

Key indicators: single-crystal X-ray study;  $T = 298$  K; mean  $\sigma(\text{C}-\text{C}) = 0.002$  Å;  $R$  factor = 0.041;  $wR$  factor = 0.115; data-to-parameter ratio = 11.5.

The molecular conformation of the title compound,  $\text{C}_{10}\text{H}_8\text{O}_4$ , isolated from *Laretia acualis*, is stabilized by a strong intramolecular hydrogen bond between the hydroxyl and carbonyl groups. The crystal packing shows  $\pi$ - $\pi$  stacking interactions. The chromene (4*H*-1-benzopyran-4-one) unit is essentially planar.

**Related literature**

For related literature, see: Gabor (1988); Valenti *et al.* (1993, 1998); Vasconcelos *et al.* (1998); Bernstein *et al.* (1995); Wickens (1995); Wallet & Cody (1995).


**Experimental**
**Crystal data**

|                                     |                                   |
|-------------------------------------|-----------------------------------|
| $\text{C}_{10}\text{H}_8\text{O}_4$ | $V = 858.77$ (11) Å <sup>3</sup>  |
| $M_r = 192.16$                      | $Z = 4$                           |
| Monoclinic, $P2_1/c$                | Mo $K\alpha$ radiation            |
| $a = 9.7551$ (3) Å                  | $\mu = 0.12$ mm <sup>-1</sup>     |
| $b = 11.7512$ (9) Å                 | $T = 298$ (2) K                   |
| $c = 7.5211$ (7) Å                  | $0.19 \times 0.10 \times 0.08$ mm |
| $\beta = 95.094$ (4)°               |                                   |

**Data collection**

|  |  |
|--|--|
| Nonius KappaCCD area-detector diffractometer | 1504 measured reflections              |
| Absorption correction: none                  | 1504 independent reflections           |
|  | 1393 reflections with $I > 2\sigma(I)$ |

**Refinement**

|                                 |  |
|---------------------------------|--|
| $R[F^2 > 2\sigma(F^2)] = 0.041$ | H atoms treated by a mixture of independent and constrained refinement |
| $wR(F^2) = 0.115$               |  |
| $S = 1.08$                      |  |
| 1504 reflections                | $\Delta\rho_{\text{max}} = 0.15$ e Å <sup>-3</sup>                     |
| 131 parameters                  | $\Delta\rho_{\text{min}} = -0.17$ e Å <sup>-3</sup>                    |

**Table 1**

Hydrogen-bond geometry (Å, °).

| $D-H\cdots A$     | $D-H$    | $H\cdots A$ | $D\cdots A$ | $D-H\cdots A$ |
|-------------------|----------|-------------|-------------|---------------|
| O3-H9 $\cdots$ O2 | 0.92 (3) | 1.72 (3)    | 2.5901 (17) | 155 (2)       |

**Table 2**
 $\pi$ - $\pi$  interactions (Å, °).

$Cg1$  and  $Cg2$  are the centroids of rings O1/C2-C4/C4A-C8A and C4A/C5-C8/C8A, respectively. The offset is defined as the distance between  $CgI$  and the perpendicular projection of  $CgJ$  on ring  $I$ .

| $CgI$ | $CgJ$   | $CgI\cdots CgJ$ | Dihedral angle | Interplanar distance | Offset |
|-------|---------|-----------------|----------------|----------------------|--------|
| $Cg1$ | $Cg2^i$ | 3.6661 (8)      | 1.39           | 3.51                 | 1.13   |
| $Cg2$ | $Cg1^i$ | 3.6660 (8)      | 1.39           | 3.49                 | 1.06   |
| $Cg2$ | $Cg2^i$ | 3.7930 (8)      | 1.69           | 3.47                 | 1.50   |
| $Cg2$ | $Cg2^i$ | 3.7931 (8)      | 1.69           | 3.49                 | 1.53   |

Symmetry codes: (i)  $x, \frac{1}{2} - y, -\frac{1}{2} + z$ ; (ii)  $x, \frac{1}{2} - y, \frac{1}{2} + z$ .

Data collection: COLLECT (Nonius, 1998); cell refinement: DENZO-SMN (Otwinowski & Minor, 1997); data reduction: DENZO-SMN; program(s) used to solve structure: SIR97 (Altomare *et al.*, 1999); program(s) used to refine structure: SHELXL97 (Sheldrick, 1997); molecular graphics: ORTEP-3 for Windows (Farrugia, 1997); software used to prepare material for publication: WinGX (Farrugia, 1999).

LAL thanks the Fondo Nacional de Desarrollo Científico y Tecnológico de Chile for grant 1060339. We thank the Spanish Research Council (CSIC) for providing us with a free-of-charge licence for the Cambridge Structural Database.

Supplementary data and figures for this paper are available from the IUCr electronic archives (Reference: BT2661).

**References**

- Altomare, A., Burla, M. C., Camalli, M., Cascarano, G. L., Giacovazzo, C., Guagliardi, A., Moliterni, A. G. G., Polidori, G. & Spagna, R. (1999). *J. Appl. Cryst.* **32**, 115-119.
- Bernstein, J., Davis, R. E., Shimoni, L. & Chang, N.-L. (1995). *Angew. Chem. Int. Ed. Engl.* **34**, 1555-1573.
- Farrugia, L. J. (1997). *J. Appl. Cryst.* **30**, 565.
- Farrugia, L. J. (1999). *J. Appl. Cryst.* **32**, 837-838.
- Gabor, M. (1988). *The Pharmacology of Benzopyrone Derivatives and Related Compounds*, pp. 91-126. Budapest: Akademiai Kiado.
- Nonius (1998). COLLECT. Nonius BV, Delft, The Netherlands.
- Otwinowski, Z. & Minor, W. (1997). *Methods in Enzymology*, Vol. 276, *Macromolecular Crystallography*, Part A, edited by C. W. Carter Jr & R. M. Sweet, pp. 307-326. New York: Academic Press.
- Sheldrick, G. M. (1997). SHELXL97. University of Göttingen, Germany.
- Valenti, P., Bisi, A., Rampa, A., Gobbi, S., Belluti, F., Da Re, P., Cima, L. & Carrara, M. (1998). *Anticancer Drug. Des.* **13**, 881-892.
- Valenti, P., Da Re, P., Rampa, A., Montanari, P., Carrara, M. & Cima, L. (1993). *Anticancer Drug. Des.* **8**, 349-360.
- Vasconcelos, J. M. J., Silva, A. M. S. & Cavaleiro, J. A. S. (1998). *Phytochemistry*, **49**, 1421-1424.
- Wallet, J.-C. & Cody, V. (1995). *Acta Cryst.* **C51**, 1193-1195.
- Wickens, G. E. (1995). *Econ. Bot.* **49**, 207-212.

## supporting information

*Acta Cryst.* (2008). E64, o285 [https://doi.org/10.1107/S1600536807066494]

**5-Hydroxy-7-methoxy-4*H*-chromen-4-one**

**Iván Brito, Jorge Bórquez, Luis Alberto Loyola and Matías López-Rodríguez**

**S1. Comment**

The title compound was originally isolated from *Artemisia campestris* (maritima) (Vasconcelos *et al.*, 1998) and later from *Laretia acualis* (Cav.) which is known in Chile as "Llaretia de la zona central", is a yellowish-green, compact resinous cushion shrub, which grows in the high Andes of Chile. Whole plant infusions are widely used as diabetes treatment in folk medicine (Wickens, 1995). Chromene derivatives exhibits a wide spectrum of biological activity, including spasmolytic, anti-arrhythmic, cardionthonic, antiviral, anticancer and alkylating properties (Gabor, 1988; Valenti *et al.*, 1993, 1998).

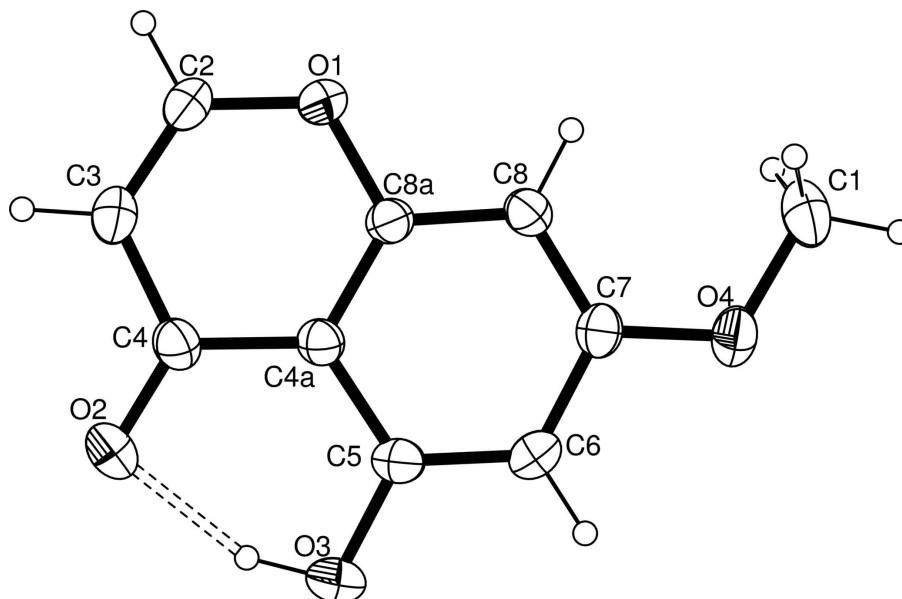
The title structure (Fig.1), consists of a chromene moiety substituted in position 5 and 7 with a hydroxy and methoxy group, respectively. The chromene ring system is essentially planar with maximum deviation of -0.007 (2) Å for C2. The geometrical parameters of the chromene group are comparable to those of related structures reported earlier (Willet & Cody, 1995). The mean bond distances are: O-C<sub>sp</sub><sup>2</sup> 1.3552 (17) Å, and aromatic C—C 1.391 (2) Å, while C4=O2 is 1.2531 (18)Å and C2=C3 is essentially a double bond with a distance of 1.330 (2) Å Å. In the crystal structure, the molecular packing is stabilized by intramolecular O—H···O hydrogen bond generating a graph-set motif S(6) (Bernstein *et al.*, 1995) as well as  $\pi$ - $\pi$  stacking interactions (Table 2).

**S2. Experimental**

Dried and finely powdered tissues from the aerial parts of *Laretia acualis* (535 g) were extracted with petrol ether at room temperature. The solvent was evaporated to dryness by vacuum distillation and low temperature, yielding a gum (15 g). The concentrated petrol ether extract was fractionated on silica gel column with hexane-ethyl acetate mixtures of increasing polarity as elution solvents. The fraction hexane-ethyl acetate 10% (2.45 g) was separated on silica gel using the same elution solvents yielding 45.5 mg of (I)(m.p. 374 K). The title compound was identified by comparing the spectroscopic data with the previously published data (Vasconcelos *et al.*, 1998). Recrystallization from hexane/ethyl acetate (8:2) at room temperature afforded colourless crystals suitable for X-ray diffraction analysis.

**S3. Refinement**

H atom attached to O3 atom was located in a difference Fourier map and refined isotropically. All other H atoms were positioned geometrically and then treated as riding, with C—H distances of 0.93 (CH) and 0.96 Å (CH<sub>3</sub>), and  $U_{\text{iso}}(\text{H}) = 1.2U_{\text{eq}}(\text{C})$  or  $U_{\text{iso}}(\text{H}) = 1.5U_{\text{eq}}(\text{C}_{\text{methyl}})$ .



**Figure 1**

The molecular structure of the title compound, showing the atom-numbering scheme. Displacement ellipsoids are drawn at the 30% probability level. The dashed line indicates the intramolecular O—H···O hydrogen bond. H atoms are shown as small spheres of arbitrary radii.

### 5-Hydroxy-7-methoxy-4*H*-chromen-4-one

#### Crystal data

$C_{10}H_8O_4$   
 $M_r = 192.16$   
 Monoclinic,  $P2_1/c$   
 Hall symbol: -P 2ybc  
 $a = 9.7551 (3) \text{ \AA}$   
 $b = 11.7512 (9) \text{ \AA}$   
 $c = 7.5211 (7) \text{ \AA}$   
 $\beta = 95.094 (4)^\circ$   
 $V = 858.77 (11) \text{ \AA}^3$   
 $Z = 4$

$F(000) = 400$   
 $D_x = 1.486 \text{ Mg m}^{-3}$   
 Melting point: 374 K  
 Mo  $K\alpha$  radiation,  $\lambda = 0.71073 \text{ \AA}$   
 Cell parameters from 1504 reflections  
 $\theta = 3.0\text{--}25.0^\circ$   
 $\mu = 0.12 \text{ mm}^{-1}$   
 $T = 298 \text{ K}$   
 Prismatic, colourless  
 $0.19 \times 0.10 \times 0.08 \text{ mm}$

#### Data collection

Nonius KappaCCD area-detector  
 diffractometer  
 Radiation source: fine-focus sealed tube  
 Graphite monochromator  
 $\varphi$  scans, and  $\omega$  scans with  $\kappa$  offsets  
 1504 measured reflections  
 1504 independent reflections

1393 reflections with  $I > 2\sigma(I)$   
 $R_{\text{int}} = 0$   
 $\theta_{\text{max}} = 25.3^\circ$ ,  $\theta_{\text{min}} = 3.2^\circ$   
 $h = -11 \rightarrow 11$   
 $k = -14 \rightarrow 0$   
 $l = 0 \rightarrow 9$

#### Refinement

Refinement on  $F^2$   
 Least-squares matrix: full  
 $R[F^2 > 2\sigma(F^2)] = 0.041$   
 $wR(F^2) = 0.115$

$S = 1.08$   
 1504 reflections  
 131 parameters  
 0 restraints

H atoms treated by a mixture of independent  
and constrained refinement  
 $w = 1/[\sigma^2(F_o^2) + (0.06P)^2 + 0.1521P]$   
where  $P = (F_o^2 + 2F_c^2)/3$

$$(\Delta/\sigma)_{\max} < 0.001$$

$$\Delta\rho_{\max} = 0.15 \text{ e } \text{\AA}^{-3}$$

$$\Delta\rho_{\min} = -0.17 \text{ e } \text{\AA}^{-3}$$

#### Special details

**Geometry.** All e.s.d.'s (except the e.s.d. in the dihedral angle between two l.s. planes) are estimated using the full covariance matrix. The cell e.s.d.'s are taken into account individually in the estimation of e.s.d.'s in distances, angles and torsion angles; correlations between e.s.d.'s in cell parameters are only used when they are defined by crystal symmetry. An approximate (isotropic) treatment of cell e.s.d.'s is used for estimating e.s.d.'s involving l.s. planes.

**Refinement.** Refinement of  $F^2$  against ALL reflections. The weighted  $R$ -factor  $wR$  and goodness of fit  $S$  are based on  $F^2$ , conventional  $R$ -factors  $R$  are based on  $F$ , with  $F$  set to zero for negative  $F^2$ . The threshold expression of  $F^2 > \sigma(F^2)$  is used only for calculating  $R$ -factors(gt) *etc.* and is not relevant to the choice of reflections for refinement.  $R$ -factors based on  $F^2$  are statistically about twice as large as those based on  $F$ , and  $R$ -factors based on ALL data will be even larger.

#### Fractional atomic coordinates and isotropic or equivalent isotropic displacement parameters ( $\text{\AA}^2$ )

|     | $x$          | $y$          | $z$          | $U_{\text{iso}}^*/U_{\text{eq}}$ |
|-----|--------------|--------------|--------------|----------------------------------|
| O1  | 0.70907 (10) | 0.05272 (8)  | 0.30079 (14) | 0.0533 (3)                       |
| O2  | 0.96609 (11) | 0.31131 (10) | 0.18700 (17) | 0.0649 (4)                       |
| O3  | 0.77689 (13) | 0.45485 (9)  | 0.25771 (16) | 0.0629 (4)                       |
| H9  | 0.855 (3)    | 0.422 (2)    | 0.219 (3)    | 0.098 (7)*                       |
| O4  | 0.36201 (10) | 0.31332 (9)  | 0.43512 (14) | 0.0558 (3)                       |
| C1  | 0.27108 (16) | 0.22189 (16) | 0.4674 (2)   | 0.0633 (5)                       |
| H1A | 0.1856       | 0.2521       | 0.5006       | 0.095*                           |
| H1B | 0.3121       | 0.175        | 0.5622       | 0.095*                           |
| H1C | 0.2544       | 0.177        | 0.3609       | 0.095*                           |
| C2  | 0.83521 (16) | 0.03322 (13) | 0.2464 (2)   | 0.0586 (4)                       |
| H2  | 0.8626       | -0.042       | 0.235        | 0.07*                            |
| C3  | 0.92292 (15) | 0.11442 (14) | 0.2080 (2)   | 0.0568 (4)                       |
| H3  | 1.0084       | 0.0946       | 0.1715       | 0.068*                           |
| C4  | 0.88700 (14) | 0.23206 (12) | 0.22245 (19) | 0.0460 (4)                       |
| C4A | 0.75193 (13) | 0.25315 (10) | 0.27872 (16) | 0.0384 (3)                       |
| C5  | 0.69920 (14) | 0.36468 (11) | 0.29717 (17) | 0.0427 (3)                       |
| C6  | 0.57034 (15) | 0.38106 (12) | 0.35134 (17) | 0.0460 (4)                       |
| H6  | 0.5372       | 0.4545       | 0.3645       | 0.055*                           |
| C7  | 0.48861 (13) | 0.28748 (12) | 0.38688 (16) | 0.0419 (3)                       |
| C8  | 0.53533 (13) | 0.17729 (11) | 0.37016 (17) | 0.0419 (3)                       |
| H8  | 0.4808       | 0.1152       | 0.394        | 0.05*                            |
| C8A | 0.66641 (13) | 0.16281 (11) | 0.31662 (17) | 0.0391 (3)                       |

#### Atomic displacement parameters ( $\text{\AA}^2$ )

|    | $U^{11}$   | $U^{22}$    | $U^{33}$    | $U^{12}$    | $U^{13}$   | $U^{23}$    |
|----|------------|-------------|-------------|-------------|------------|-------------|
| O1 | 0.0439 (6) | 0.0339 (5)  | 0.0831 (7)  | 0.0016 (4)  | 0.0111 (5) | -0.0009 (4) |
| O2 | 0.0439 (6) | 0.0602 (7)  | 0.0922 (8)  | -0.0118 (5) | 0.0150 (5) | 0.0044 (6)  |
| O3 | 0.0628 (8) | 0.0378 (6)  | 0.0895 (8)  | -0.0086 (5) | 0.0146 (6) | 0.0063 (5)  |
| O4 | 0.0431 (6) | 0.0615 (7)  | 0.0646 (6)  | 0.0096 (5)  | 0.0145 (5) | -0.0015 (5) |
| C1 | 0.0409 (8) | 0.0829 (12) | 0.0677 (10) | -0.0004 (8) | 0.0138 (7) | 0.0061 (8)  |
| C2 | 0.0456 (8) | 0.0432 (8)  | 0.0876 (11) | 0.0098 (6)  | 0.0105 (7) | -0.0038 (7) |

|     |            |            |             |             |             |             |
|-----|------------|------------|-------------|-------------|-------------|-------------|
| C3  | 0.0376 (8) | 0.0554 (9) | 0.0779 (10) | 0.0068 (7)  | 0.0087 (7)  | -0.0033 (7) |
| C4  | 0.0357 (7) | 0.0483 (8) | 0.0536 (8)  | -0.0036 (6) | 0.0015 (5)  | 0.0015 (6)  |
| C4A | 0.0353 (7) | 0.0387 (7) | 0.0405 (6)  | -0.0017 (5) | -0.0012 (5) | 0.0006 (5)  |
| C5  | 0.0458 (8) | 0.0357 (7) | 0.0458 (7)  | -0.0036 (6) | 0.0001 (5)  | 0.0023 (5)  |
| C6  | 0.0501 (8) | 0.0372 (7) | 0.0502 (7)  | 0.0085 (6)  | 0.0026 (6)  | -0.0011 (5) |
| C7  | 0.0376 (7) | 0.0504 (8) | 0.0374 (6)  | 0.0040 (6)  | 0.0020 (5)  | -0.0012 (5) |
| C8  | 0.0380 (7) | 0.0408 (7) | 0.0470 (7)  | -0.0039 (5) | 0.0043 (5)  | 0.0015 (5)  |
| C8A | 0.0377 (7) | 0.0347 (7) | 0.0443 (7)  | 0.0007 (5)  | 0.0002 (5)  | -0.0007 (5) |

*Geometric parameters (Å, °)*

|               |              |              |              |
|---------------|--------------|--------------|--------------|
| O1—C2         | 1.3503 (18)  | C3—C4        | 1.433 (2)    |
| O1—C8A        | 1.3674 (15)  | C3—H3        | 0.93         |
| O2—C4         | 1.2531 (17)  | C4—C4A       | 1.4407 (19)  |
| O3—C5         | 1.3510 (16)  | C4A—C8A      | 1.3952 (18)  |
| O3—H9         | 0.92 (2)     | C4A—C5       | 1.4192 (18)  |
| O4—C7         | 1.3522 (16)  | C5—C6        | 1.369 (2)    |
| O4—C1         | 1.428 (2)    | C6—C7        | 1.398 (2)    |
| C1—H1A        | 0.96         | C6—H6        | 0.93         |
| C1—H1B        | 0.96         | C7—C8        | 1.3821 (19)  |
| C1—H1C        | 0.96         | C8—C8A       | 1.3848 (18)  |
| C2—C3         | 1.330 (2)    | C8—H8        | 0.93         |
| C2—H2         | 0.93         |              |              |
| C2—O1—C8A     | 118.65 (11)  | C8A—C4A—C5   | 117.02 (12)  |
| C5—O3—H9      | 103.8 (15)   | C8A—C4A—C4   | 120.54 (12)  |
| C7—O4—C1      | 118.20 (12)  | C5—C4A—C4    | 122.44 (12)  |
| O4—C1—H1A     | 109.5        | O3—C5—C6     | 120.20 (12)  |
| O4—C1—H1B     | 109.5        | O3—C5—C4A    | 119.18 (13)  |
| H1A—C1—H1B    | 109.5        | C6—C5—C4A    | 120.62 (12)  |
| O4—C1—H1C     | 109.5        | C5—C6—C7     | 120.04 (12)  |
| H1A—C1—H1C    | 109.5        | C5—C6—H6     | 120          |
| H1B—C1—H1C    | 109.5        | C7—C6—H6     | 120          |
| C3—C2—O1      | 124.40 (14)  | O4—C7—C8     | 123.45 (13)  |
| C3—C2—H2      | 117.8        | O4—C7—C6     | 115.13 (12)  |
| O1—C2—H2      | 117.8        | C8—C7—C6     | 121.42 (12)  |
| C2—C3—C4      | 120.62 (14)  | C7—C8—C8A    | 117.52 (12)  |
| C2—C3—H3      | 119.7        | C7—C8—H8     | 121.2        |
| C4—C3—H3      | 119.7        | C8A—C8—H8    | 121.2        |
| O2—C4—C3      | 122.79 (13)  | O1—C8A—C8    | 115.95 (11)  |
| O2—C4—C4A     | 122.08 (13)  | O1—C8A—C4A   | 120.66 (12)  |
| C3—C4—C4A     | 115.12 (12)  | C8—C8A—C4A   | 123.38 (12)  |
| C8A—O1—C2—C3  | 0.7 (2)      | C1—O4—C7—C8  | -1.15 (18)   |
| O1—C2—C3—C4   | -0.1 (3)     | C1—O4—C7—C6  | 177.84 (12)  |
| C2—C3—C4—O2   | -179.70 (15) | C5—C6—C7—O4  | -178.42 (11) |
| C2—C3—C4—C4A  | -0.5 (2)     | C5—C6—C7—C8  | 0.6 (2)      |
| O2—C4—C4A—C8A | 179.81 (12)  | O4—C7—C8—C8A | 178.87 (11)  |

|               |              |               |              |
|---------------|--------------|---------------|--------------|
| C3—C4—C4A—C8A | 0.59 (19)    | C6—C7—C8—C8A  | -0.05 (19)   |
| O2—C4—C4A—C5  | 0.2 (2)      | C2—O1—C8A—C8  | 179.00 (12)  |
| C3—C4—C4A—C5  | -178.99 (12) | C2—O1—C8A—C4A | -0.52 (19)   |
| C8A—C4A—C5—O3 | -178.38 (11) | C7—C8—C8A—O1  | -179.75 (11) |
| C4—C4A—C5—O3  | 1.2 (2)      | C7—C8—C8A—C4A | -0.24 (19)   |
| C8A—C4A—C5—C6 | 0.52 (19)    | C5—C4A—C8A—O1 | 179.50 (10)  |
| C4—C4A—C5—C6  | -179.88 (11) | C4—C4A—C8A—O1 | -0.11 (19)   |
| O3—C5—C6—C7   | 178.07 (11)  | C5—C4A—C8A—C8 | 0.02 (19)    |
| C4A—C5—C6—C7  | -0.8 (2)     | C4—C4A—C8A—C8 | -179.59 (11) |

*Hydrogen-bond geometry (Å, °)*

| <i>D</i> —H... <i>A</i> | <i>D</i> —H | H... <i>A</i> | <i>D</i> ... <i>A</i> | <i>D</i> —H... <i>A</i> |
|-------------------------|-------------|---------------|-----------------------|-------------------------|
| O3—H9...O2              | 0.92 (3)    | 1.72 (3)      | 2.5901 (17)           | 155 (2)                 |