

Acta Crystallographica Section E

Structure Reports

Online

ISSN 1600-5368

Bis(3,5-dimethylpyrazol-1-yl)acetic acid

Quang Trung Nguyen and Jong Hwa Jeong*

Department of Chemistry, Kyungpook National University, Taegu 702-701, Republic of Korea

Correspondence e-mail: jeongjh@knu.ac.kr

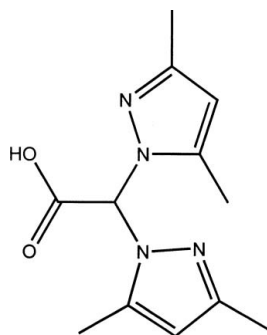
Received 18 October 2007; accepted 10 December 2007

 Key indicators: single-crystal X-ray study; $T = 293$ K; mean $\sigma(\text{C}-\text{C}) = 0.002$ Å; R factor = 0.040; wR factor = 0.120; data-to-parameter ratio = 13.5.

In the title compound, $\text{C}_{12}\text{H}_{16}\text{N}_4\text{O}_2$, the dihedral angle between the two pyrazole rings is $78.17(7)^\circ$. Intermolecular $\text{O}-\text{H}\cdots\text{N}$ hydrogen bonds link the molecules into one-dimensional chains along the c axis.

Related literature

For the synthesis of bis(3,5-dimethylpyrazol-1-yl)acetic acid, see: Otero *et al.* (2004).



Experimental

Crystal data

 $\text{C}_{12}\text{H}_{16}\text{N}_4\text{O}_2$
 $M_r = 248.29$

 Monoclinic, $P2_1/c$
 $a = 8.4317(8)$ Å

 $b = 18.8569(16)$ Å
 $c = 8.6083(7)$ Å
 $\beta = 114.576(7)^\circ$
 $V = 1244.69(19)$ Å³
 $Z = 4$

 Mo $K\alpha$ radiation
 $\mu = 0.09$ mm⁻¹
 $T = 293(2)$ K
 $0.50 \times 0.40 \times 0.35$ mm

Data collection

 Enraf-Nonius CAD-4 four-circle diffractometer
 Absorption correction: none
 2526 measured reflections
 2305 independent reflections

 1924 reflections with $I > 2\sigma(I)$
 $R_{\text{int}} = 0.007$
 3 standard reflections
 frequency: 60 min
 intensity decay: 0.2%

Refinement

 $R[F^2 > 2\sigma(F^2)] = 0.040$
 $wR(F^2) = 0.120$
 $S = 1.08$
 2305 reflections
 171 parameters

 H atoms treated by a mixture of independent and constrained refinement
 $\Delta\rho_{\text{max}} = 0.23$ e Å⁻³
 $\Delta\rho_{\text{min}} = -0.26$ e Å⁻³

Table 1

Hydrogen-bond geometry (Å, °).

$D-H\cdots A$	$D-H$	$H\cdots A$	$D\cdots A$	$D-H\cdots A$
$\text{O2}-\text{H2}\cdots\text{N4}^i$	0.97 (3)	1.71 (3)	2.676 (2)	172 (3)

 Symmetry code: (i) $x, -y + \frac{1}{2}, z + \frac{1}{2}$.

Data collection: *CAD-4 Software* (Enraf-Nonius, 1989); cell refinement: *CAD-4 Software*; data reduction: *XCAD* (McArdle, 1999); program(s) used to solve structure: *SHELXS97* (Sheldrick, 1997); program(s) used to refine structure: *SHELXL97* (Sheldrick, 1997); molecular graphics: *ORTEP-3 for Windows* (Farrugia, 1997); software used to prepare material for publication: *SHELXL97*.

Supplementary data and figures for this paper are available from the IUCr electronic archives (Reference: KJ2077).

References

- Enraf-Nonius (1989). *CAD-4 Software*. Version 5.0. Enraf-Nonius, Delft, The Netherlands.
- Farrugia, L. J. (1997). *J. Appl. Cryst.* **30**, 565.
- McArdle, P. (1999). *XCAD*. National University of Ireland, Galway, Ireland.
- Otero, A., Fernández-Baeza, J., Antiñolo, A., Tejada, J., Lara-Sánchez, A., Sánchez-Barba, L. & Rodríguez, A. M. (2004). *Eur. J. Inorg. Chem.* pp. 260–266.
- Sheldrick, G. M. (1997). *SHELXS97* and *SHELXL97*. University of Göttingen, Germany.

supporting information

Acta Cryst. (2008). E64, o319 [https://doi.org/10.1107/S1600536807066391]

Bis(3,5-dimethylpyrazol-1-yl)acetic acid**Quang Trung Nguyen and Jong Hwa Jeong****S1. Comment**

The title compound, C₁₂H₁₆N₄O₂, was synthesized through the protonation of bis(3,5-dimethylpyrazol-1-yl)acetate. This compound was used to prepare 2,2-bis(3,5-dimethylpyrazol-1-yl)ethanol, which was the reagent for the NNO monoanionic heteroscorpionate ligand (Otero *et al.*, 2004). Intermolecular O—H···N hydrogen bonds link the molecules into one-dimensional chains along the *c* axis (Fig. 2 and Table 1). The dihedral angle between the two pyrazol rings is 78.17 (7)°.

S2. Experimental

The title compound was synthesized according to the literature procedure (Otero *et al.*, 2004). Single crystals of the compound suitable for X-ray analysis were obtained by diffusion of ether into a THF solution.

S3. Refinement

All H-atoms except the H atom of the acid group, which was refined isotropically, were positioned geometrically and included in the refinement using a riding model with C—H = 0.98 Å, $U_{\text{iso}}(\text{H}) = 1.2U_{\text{eq}}(\text{C})$ for C(*sp*³)—H, C—H = 0.96 Å, $U_{\text{iso}}(\text{H}) = 1.5U_{\text{eq}}(\text{C})$ for CH₃, and C—H = 0.93 Å, $U_{\text{iso}}(\text{H}) = 1.2U_{\text{eq}}(\text{C})$ for C(*sp*²)—H.

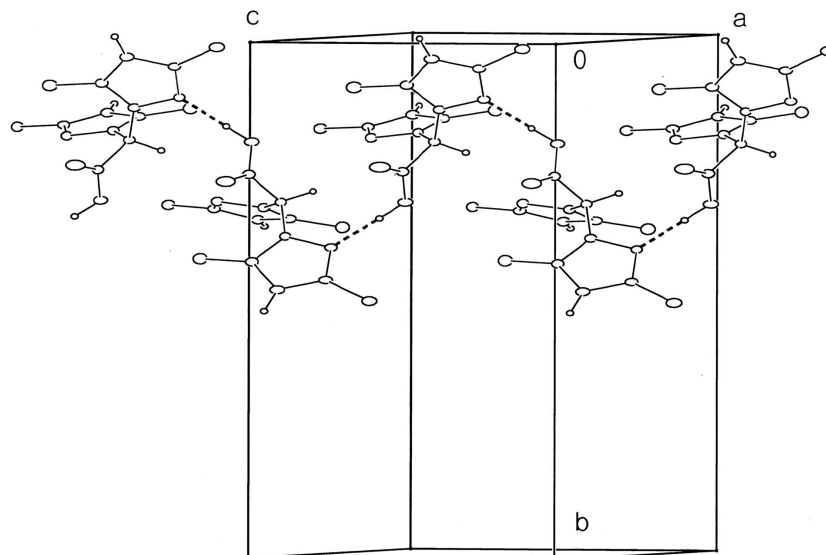


Figure 2

A packing diagram of the title compound viewed approximately perpendicular to the *bc* plane. Hydrogen bonds are indicated by dashed lines. H atoms of the methyl groups were omitted for clarity.

Bis(3,5-dimethylpyrazol-1-yl)acetic acid

Crystal data

$C_{12}H_{16}N_4O_2$

$M_r = 248.29$

Monoclinic, $P2_1/c$

Hall symbol: -P 2ybc

$a = 8.4317$ (8) Å

$b = 18.8569$ (16) Å

$c = 8.6083$ (7) Å

$\beta = 114.576$ (7)°

$V = 1244.69$ (19) Å³

$Z = 4$

$F(000) = 528$

$D_x = 1.325$ Mg m⁻³

Mo $K\alpha$ radiation, $\lambda = 0.71073$ Å

Cell parameters from 25 reflections

$\theta = 9.3$ – 11.6 °

$\mu = 0.09$ mm⁻¹

$T = 293$ K

Block, colourless

$0.50 \times 0.40 \times 0.35$ mm

Data collection

Enraf–Nonius CAD-4 four-circle
diffractometer

Radiation source: fine-focus sealed tube

Graphite monochromator

$\omega/2\theta$ scans

2526 measured reflections

2305 independent reflections

1924 reflections with $I > 2\sigma(I)$

$R_{int} = 0.007$

$\theta_{max} = 25.5$ °, $\theta_{min} = 2.8$ °

$h = 0 \rightarrow 10$

$k = 0 \rightarrow 22$

$l = -10 \rightarrow 9$

3 standard reflections every 60 min

intensity decay: 0.2%

Refinement

Refinement on F^2

Least-squares matrix: full

$R[F^2 > 2\sigma(F^2)] = 0.040$

$wR(F^2) = 0.120$

$S = 1.08$

2305 reflections

171 parameters

0 restraints

Primary atom site location: structure-invariant
direct methods
Secondary atom site location: difference Fourier
map
Hydrogen site location: inferred from
neighbouring sites

H atoms treated by a mixture of independent
and constrained refinement

$$w = 1/[\sigma^2(F_o^2) + (0.0687P)^2 + 0.2835P]$$

$$\text{where } P = (F_o^2 + 2F_c^2)/3$$

$$(\Delta/\sigma)_{\max} < 0.001$$

$$\Delta\rho_{\max} = 0.23 \text{ e } \text{\AA}^{-3}$$

$$\Delta\rho_{\min} = -0.26 \text{ e } \text{\AA}^{-3}$$

Fractional atomic coordinates and isotropic or equivalent isotropic displacement parameters (\AA^2)

	<i>x</i>	<i>y</i>	<i>z</i>	$U_{\text{iso}}^*/U_{\text{eq}}$
C1	0.01420 (18)	0.19070 (8)	0.40486 (18)	0.0328 (3)
H1A	0.0399	0.2115	0.3135	0.039*
N1	0.17999 (15)	0.17643 (7)	0.54704 (15)	0.0337 (3)
N2	0.19887 (16)	0.18728 (7)	0.71087 (15)	0.0363 (3)
C2	0.36285 (19)	0.16958 (8)	0.80788 (19)	0.0342 (3)
C3	0.4348 (2)	0.17514 (10)	0.9979 (2)	0.0444 (4)
H3A	0.3425	0.1868	1.0313	0.067*
H3B	0.5223	0.2115	1.0366	0.067*
H3C	0.4858	0.1306	1.0481	0.067*
C4	0.4481 (2)	0.14729 (9)	0.7074 (2)	0.0389 (4)
H4A	0.5633	0.1323	0.7462	0.047*
C5	0.3290 (2)	0.15185 (8)	0.5408 (2)	0.0359 (4)
C6	0.3447 (2)	0.13593 (11)	0.3783 (2)	0.0521 (5)
H6A	0.2877	0.0918	0.3328	0.078*
H6B	0.4657	0.1326	0.4000	0.078*
H6C	0.2908	0.1732	0.2975	0.078*
N3	-0.08641 (16)	0.12648 (7)	0.33639 (15)	0.0332 (3)
N4	-0.10877 (16)	0.10578 (7)	0.17637 (15)	0.0341 (3)
C7	-0.1927 (2)	0.04440 (8)	0.1485 (2)	0.0380 (4)
C8	-0.2378 (3)	0.00510 (10)	-0.0153 (2)	0.0554 (5)
H8A	-0.1900	0.0296	-0.0838	0.083*
H8B	-0.3623	0.0023	-0.0763	0.083*
H8C	-0.1900	-0.0419	0.0089	0.083*
C9	-0.2243 (2)	0.02556 (9)	0.2895 (2)	0.0435 (4)
H9A	-0.2817	-0.0150	0.3004	0.052*
C10	-0.15508 (19)	0.07794 (8)	0.4088 (2)	0.0379 (4)
C11	-0.1488 (3)	0.08317 (11)	0.5835 (2)	0.0524 (5)
H11A	-0.0345	0.0981	0.6619	0.079*
H11B	-0.1743	0.0377	0.6178	0.079*
H11C	-0.2335	0.1171	0.5838	0.079*
C12	-0.0880 (2)	0.24644 (8)	0.45592 (19)	0.0379 (4)
O1	-0.22573 (17)	0.23504 (8)	0.4587 (2)	0.0652 (4)
O2	-0.00521 (16)	0.30749 (6)	0.49036 (15)	0.0442 (3)
H2	-0.052 (3)	0.3382 (14)	0.551 (3)	0.081 (7)*

Atomic displacement parameters (\AA^2)

	U^{11}	U^{22}	U^{33}	U^{12}	U^{13}	U^{23}
C1	0.0339 (8)	0.0349 (8)	0.0287 (7)	-0.0003 (6)	0.0123 (6)	0.0000 (6)
N1	0.0312 (6)	0.0405 (7)	0.0293 (6)	0.0031 (5)	0.0126 (5)	-0.0017 (5)
N2	0.0350 (7)	0.0436 (7)	0.0308 (6)	0.0018 (5)	0.0141 (5)	-0.0015 (5)
C2	0.0332 (8)	0.0334 (7)	0.0345 (8)	-0.0007 (6)	0.0126 (6)	0.0020 (6)
C3	0.0430 (9)	0.0520 (10)	0.0347 (8)	0.0046 (7)	0.0127 (7)	0.0033 (7)
C4	0.0326 (8)	0.0428 (8)	0.0412 (8)	0.0068 (6)	0.0154 (6)	0.0044 (7)
C5	0.0360 (8)	0.0351 (8)	0.0395 (8)	0.0031 (6)	0.0187 (7)	0.0009 (6)
C6	0.0519 (10)	0.0673 (12)	0.0419 (9)	0.0139 (9)	0.0242 (8)	-0.0018 (8)
N3	0.0350 (7)	0.0345 (7)	0.0312 (6)	-0.0013 (5)	0.0149 (5)	0.0007 (5)
N4	0.0360 (7)	0.0339 (7)	0.0306 (6)	-0.0017 (5)	0.0121 (5)	-0.0009 (5)
C7	0.0373 (8)	0.0312 (7)	0.0394 (8)	-0.0002 (6)	0.0100 (6)	0.0009 (6)
C8	0.0637 (12)	0.0465 (10)	0.0476 (10)	-0.0099 (9)	0.0147 (9)	-0.0102 (8)
C9	0.0408 (9)	0.0371 (8)	0.0502 (10)	-0.0053 (7)	0.0165 (7)	0.0064 (7)
C10	0.0333 (8)	0.0412 (9)	0.0399 (8)	0.0027 (6)	0.0160 (6)	0.0077 (6)
C11	0.0513 (10)	0.0659 (12)	0.0472 (10)	-0.0005 (9)	0.0277 (8)	0.0084 (8)
C12	0.0355 (8)	0.0407 (8)	0.0332 (8)	0.0044 (6)	0.0101 (6)	-0.0002 (6)
O1	0.0395 (7)	0.0564 (8)	0.1023 (12)	0.0023 (6)	0.0320 (7)	-0.0173 (8)
O2	0.0562 (7)	0.0363 (6)	0.0463 (6)	0.0003 (5)	0.0276 (6)	-0.0049 (5)

Geometric parameters (\AA , $^\circ$)

C1—N1	1.4496 (18)	N3—C10	1.3644 (19)
C1—N3	1.4551 (19)	N3—N4	1.3673 (17)
C1—C12	1.535 (2)	N4—C7	1.325 (2)
C1—H1A	0.9800	C7—C9	1.392 (2)
N1—C5	1.3608 (19)	C7—C8	1.496 (2)
N1—N2	1.3673 (17)	C8—H8A	0.9600
N2—C2	1.327 (2)	C8—H8B	0.9600
C2—C4	1.400 (2)	C8—H8C	0.9600
C2—C3	1.493 (2)	C9—C10	1.369 (2)
C3—H3A	0.9600	C9—H9A	0.9300
C3—H3B	0.9600	C10—C11	1.486 (2)
C3—H3C	0.9600	C11—H11A	0.9600
C4—C5	1.369 (2)	C11—H11B	0.9600
C4—H4A	0.9300	C11—H11C	0.9600
C5—C6	1.489 (2)	C12—O1	1.1910 (19)
C6—H6A	0.9600	C12—O2	1.315 (2)
C6—H6B	0.9600	O2—H2	0.97 (3)
C6—H6C	0.9600		
N1—C1—N3	112.50 (12)	H6B—C6—H6C	109.5
N1—C1—C12	110.15 (11)	C10—N3—N4	111.21 (12)
N3—C1—C12	112.56 (12)	C10—N3—C1	131.29 (12)
N1—C1—H1A	107.1	N4—N3—C1	117.30 (11)
N3—C1—H1A	107.1	C7—N4—N3	105.74 (12)

C12—C1—H1A	107.1	N4—C7—C9	110.26 (14)
C5—N1—N2	112.22 (12)	N4—C7—C8	120.71 (15)
C5—N1—C1	127.72 (12)	C9—C7—C8	129.02 (15)
N2—N1—C1	120.06 (11)	C7—C8—H8A	109.5
C2—N2—N1	104.80 (12)	C7—C8—H8B	109.5
N2—C2—C4	110.80 (13)	H8A—C8—H8B	109.5
N2—C2—C3	120.94 (14)	C7—C8—H8C	109.5
C4—C2—C3	128.26 (14)	H8A—C8—H8C	109.5
C2—C3—H3A	109.5	H8B—C8—H8C	109.5
C2—C3—H3B	109.5	C10—C9—C7	107.06 (14)
H3A—C3—H3B	109.5	C10—C9—H9A	126.5
C2—C3—H3C	109.5	C7—C9—H9A	126.5
H3A—C3—H3C	109.5	N3—C10—C9	105.72 (14)
H3B—C3—H3C	109.5	N3—C10—C11	125.07 (15)
C5—C4—C2	106.67 (14)	C9—C10—C11	129.20 (15)
C5—C4—H4A	126.7	C10—C11—H11A	109.5
C2—C4—H4A	126.7	C10—C11—H11B	109.5
N1—C5—C4	105.51 (13)	H11A—C11—H11B	109.5
N1—C5—C6	123.35 (14)	C10—C11—H11C	109.5
C4—C5—C6	131.13 (15)	H11A—C11—H11C	109.5
C5—C6—H6A	109.5	H11B—C11—H11C	109.5
C5—C6—H6B	109.5	O1—C12—O2	125.75 (15)
H6A—C6—H6B	109.5	O1—C12—C1	123.40 (15)
C5—C6—H6C	109.5	O2—C12—C1	110.83 (13)
H6A—C6—H6C	109.5	C12—O2—H2	110.3 (15)
N3—C1—N1—C5	78.86 (18)	N1—C1—N3—N4	-111.63 (13)
C12—C1—N1—C5	-154.68 (15)	C12—C1—N3—N4	123.21 (13)
N3—C1—N1—N2	-100.73 (15)	C10—N3—N4—C7	0.43 (16)
C12—C1—N1—N2	25.73 (18)	C1—N3—N4—C7	175.80 (12)
C5—N1—N2—C2	0.43 (17)	N3—N4—C7—C9	-0.02 (16)
C1—N1—N2—C2	-179.92 (13)	N3—N4—C7—C8	-179.15 (14)
N1—N2—C2—C4	-0.27 (17)	N4—C7—C9—C10	-0.39 (18)
N1—N2—C2—C3	179.31 (14)	C8—C7—C9—C10	178.65 (16)
N2—C2—C4—C5	0.02 (19)	N4—N3—C10—C9	-0.66 (17)
C3—C2—C4—C5	-179.52 (15)	C1—N3—C10—C9	-175.19 (14)
N2—N1—C5—C4	-0.42 (17)	N4—N3—C10—C11	178.27 (14)
C1—N1—C5—C4	179.97 (14)	C1—N3—C10—C11	3.7 (3)
N2—N1—C5—C6	-179.67 (15)	C7—C9—C10—N3	0.62 (18)
C1—N1—C5—C6	0.7 (2)	C7—C9—C10—C11	-178.25 (16)
C2—C4—C5—N1	0.24 (17)	N1—C1—C12—O1	-117.82 (17)
C2—C4—C5—C6	179.40 (17)	N3—C1—C12—O1	8.6 (2)
N1—C1—N3—C10	62.62 (19)	N1—C1—C12—O2	63.93 (16)
C12—C1—N3—C10	-62.5 (2)	N3—C1—C12—O2	-169.64 (12)

Hydrogen-bond geometry (Å, °)

<i>D</i> —H \cdots <i>A</i>	<i>D</i> —H	H \cdots <i>A</i>	<i>D</i> \cdots <i>A</i>	<i>D</i> —H \cdots <i>A</i>
O2—H2 \cdots N4 ⁱ	0.97 (3)	1.71 (3)	2.676 (2)	172 (3)

Symmetry code: (i) $x, -y+1/2, z+1/2$.