

Acta Crystallographica Section E

Structure Reports

Online

ISSN 1600-5368

(1-{2-[2-(2-Ammonioethylamino)ethyl-amino]ethyliminomethyl}-2-naphtholato-κ⁴O,N,N',N''})chloridocopper(II) chloride

Ruiting Xue and Meiju Niu*

College of Chemistry and Chemical Engineering, Liaocheng University, Shandong 252059, People's Republic of China

Correspondence e-mail: niumeiju@163.com

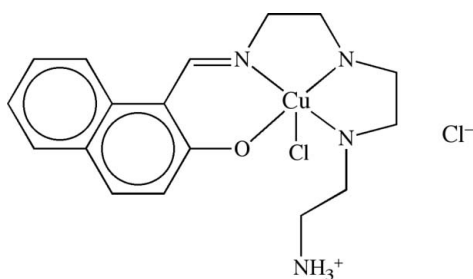
Received 17 November 2007; accepted 28 November 2007

Key indicators: single-crystal X-ray study; $T = 298$ K; mean $\sigma(\text{C}-\text{C}) = 0.005$ Å; R factor = 0.034; wR factor = 0.099; data-to-parameter ratio = 14.7.

In the square-pyramidal title complex, $[\text{CuCl}(\text{C}_{17}\text{H}_{24}\text{N}_4\text{O})]\text{Cl}$, the Cu^{II} atom is coordinated by three N atoms [$\text{Cu}-\text{N}$ 1.946 (2), 2.010 (2), 2.085 (3) Å], one O atom [$\text{Cu}-\text{O}$ 1.910 (2) Å] and one apical Cl atom [$\text{Cu}-\text{Cl}$ 2.6437 (9) Å]. The three coordinated N and one O atom are almost coplanar, with a maximum deviation of 0.0268 Å. The tetradentate ligand forms two five-membered (N—Cu—N) and one six-membered (N—Cu—O) chelate rings with bite angles of 84.06 (10), 85.30 (10) and 91.70 (9)°, respectively. The two N—Cu—N chelate rings are non-planar.

Related literature

For the general role of Schiff bases, see: Gamovski *et al.* (1993). For the crystal structures of related complexes, see: Nanda *et al.* (2006).



Experimental

Crystal data

 $[\text{CuCl}(\text{C}_{17}\text{H}_{24}\text{N}_4\text{O})]\text{Cl}$
 $M_r = 434.84$

 Monoclinic, $P2_1/c$
 $a = 12.2687$ (17) Å

 $b = 13.0277$ (18) Å
 $c = 12.7118$ (18) Å
 $\beta = 111.365$ (2)°
 $V = 1892.1$ (5) Å³
 $Z = 4$

 Mo $K\alpha$ radiation
 $\mu = 1.45$ mm⁻¹
 $T = 298$ (2) K
 $0.48 \times 0.40 \times 0.37$ mm

Data collection

 Bruker SMART CCD area-detector diffractometer
 Absorption correction: multi-scan (*SADABS*; Sheldrick, 1996)
 $T_{\text{min}} = 0.543$, $T_{\text{max}} = 0.616$
 (expected range = 0.515–0.585)

 9597 measured reflections
 3320 independent reflections
 2646 reflections with $I > 2\sigma(I)$
 $R_{\text{int}} = 0.027$

Refinement

 $R[F^2 > 2\sigma(F^2)] = 0.034$
 $wR(F^2) = 0.099$
 $S = 1.00$
 3320 reflections

 226 parameters
 H-atom parameters constrained
 $\Delta\rho_{\text{max}} = 0.59$ e Å⁻³
 $\Delta\rho_{\text{min}} = -0.40$ e Å⁻³

Table 1

Hydrogen-bond geometry (Å, °).

$D-H\cdots A$	$D-H$	$H\cdots A$	$D\cdots A$	$D-H\cdots A$
N2—H2 \cdots Cl2 ⁱ	0.91	2.44	3.225 (3)	144
N3—H3 \cdots Cl1 ⁱⁱ	0.91	2.50	3.388 (3)	165
N4—H4A \cdots Cl1 ⁱⁱⁱ	0.89	2.31	3.204 (3)	177
N4—H4B \cdots Cl2 ⁱⁱ	0.89	2.25	3.079 (4)	156
N4—H4C \cdots O1	0.89	1.83	2.703 (4)	167

 Symmetry codes: (i) $-x+1, -y, -z+1$; (ii) $x, -y+\frac{1}{2}, z+\frac{1}{2}$; (iii) $-x+1, y+\frac{1}{2}, -z+\frac{3}{2}$.

Data collection: *SMART* (Siemens, 1996); cell refinement: *SAINT* (Siemens, 1996); data reduction: *SAINT*; program(s) used to solve structure: *SHELXS97* (Sheldrick, 1997a); program(s) used to refine structure: *SHELXL97* (Sheldrick, 1997a); molecular graphics: *SHELXTL* (Sheldrick, 1997b); software used to prepare material for publication: *SHELXTL*.

The authors acknowledge the financial support of the Shandong Province Science Foundation and the State Key Laboratory of Crystalline Materials, Shandong University, People's Republic of China.

Supplementary data and figures for this paper are available from the IUCr electronic archives (Reference: LN2007).

References

- Gamovski, A. D., Nivorozhkin, A. L. & Minkin, V. I. (1993). *Coord. Chem. Rev.* **126**, 1–69.
- Nanda, P. K., Bera, M., Aromi, G. & Ray, D. (2006). *Polyhedron*, **25**, 2791–2799.
- Sheldrick, G. M. (1996). *SADABS*. University of Göttingen, Germany.
- Sheldrick, G. M. (1997a). *SHELXS97* and *SHELXL97*. University of Göttingen, Germany.
- Sheldrick, G. M. (1997b). *SHELXTL*. Version 5.1. Bruker AXS, Inc., Madison, Wisconsin, USA.
- Siemens (1996). *SMART* and *SAINT*. Siemens Analytical X-ray Instrument Inc., Madison, Wisconsin, USA.

supporting information

Acta Cryst. (2008). E64, m118 [https://doi.org/10.1107/S1600536807064033]

(1-{2-[2-(2-Ammonioethylamino)ethylamino]ethyliminomethyl}-2-naphtholato- $\kappa^4\text{O},\text{N},\text{N}',\text{N}''$)chloridocopper(II) chloride

Ruiting Xue and Meiju Niu

S1. Comment

Schiff base complexes play an important role in coordination chemistry (Gamovski *et al.*, 1993). In a continuation of a study of Schiff base ligands and their copper(II) complexes, we report here the title complex (Fig. 1), in which the ligand donor atoms consist of three nitrogen atoms (one imine and two amine) and one phenolic oxygen atom. Another Cu^{II} complex containing the same tetradentate ligand has been reported by Nanda *et al.* (2006). In the crystal structure of (I), intermolecular $\text{N}\cdots\text{H}\cdots\text{Cl}$ hydrogen bonds involving all amine and the ammonium groups link the molecules into two-dimensional networks, which lie parallel to the (100) plane (Table 1, Fig. 2). The ammonium group also forms an intramolecular hydrogen bond with the phenolic O atom.

S2. Experimental

A solution of triethylenetetramine (1 mmol) in hot methanol (10 ml) was added dropwise to a methanol solution (5 ml) of 2-hydroxy-1-naphthaldehyde (2 mmol, 344.3 mg). The mixture was then stirred at 323 K for 2 h. An aqueous solution (2 ml) of cupric chloride dihydrate (1 mmol, 170.8 mg) was then added dropwise and the mixture stirred for another 5 h. The solution was held at room temperature for about one week, whereupon green prism-shaped crystals suitable for X-ray diffraction analysis were obtained (m.p. > 573 K).

S3. Refinement

All H atoms were placed in geometrically idealized positions and refined using a riding model, with $\text{C}\text{---}\text{H} = 0.97 \text{ \AA}$ (methylene) or 0.93 \AA (aromatic, methenyl), $\text{N}\text{---}\text{H} = 0.91 \text{ \AA}$ (imine) or 0.89 \AA (ammonium) and with $U_{\text{iso}}(\text{H}) = 1.2U_{\text{eq}}(\text{C})$ or $1.5U_{\text{eq}}(\text{N})$.

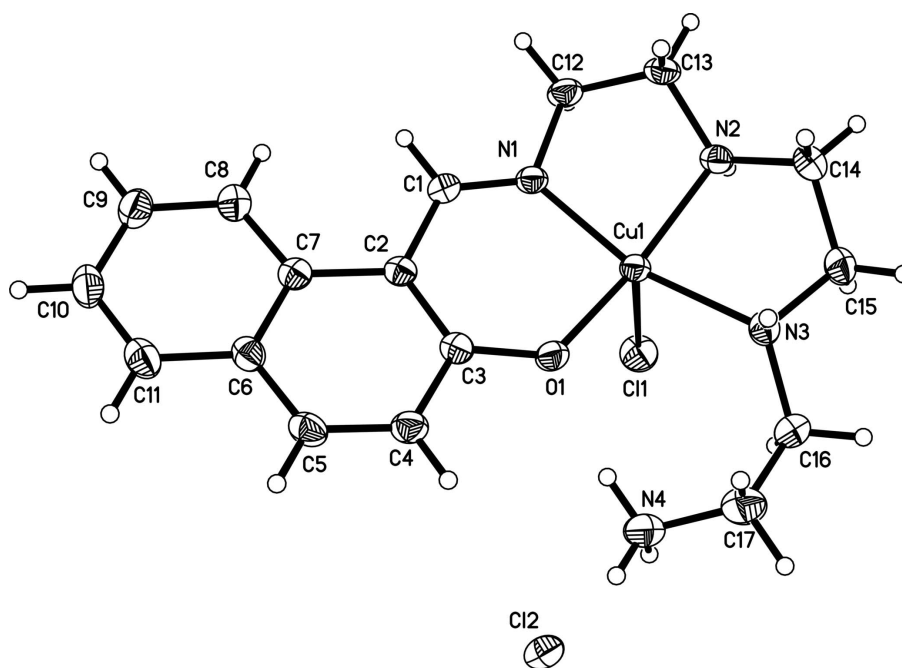


Figure 1

The molecular structure of (I), with atom labels and 30% probability displacement ellipsoids for non-H atoms.

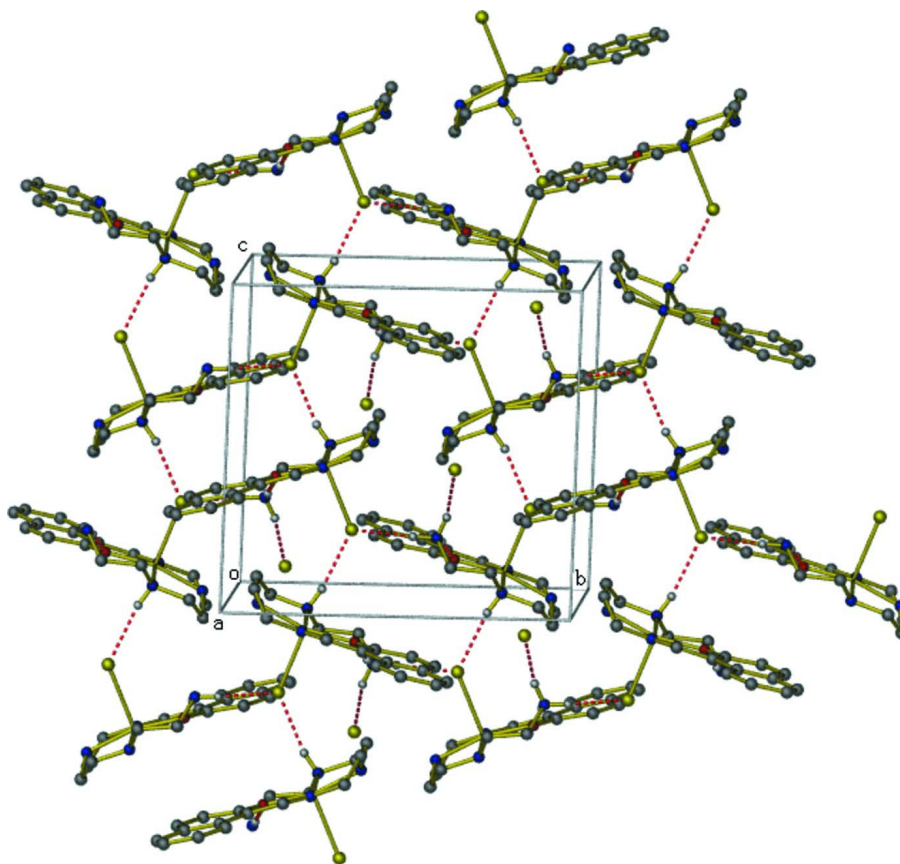


Figure 2

Crystal packing of the title complex showing the hydrogen bonding interactions as dashed lines.

(1-{2-[2-(2-Ammonioethylamino)ethylamino]ethyliminomethyl}-2-naphtholato- κ^4O,N,N',N'')chloridocopper(II) chloride

Crystal data

[CuCl(C₁₇H₂₄N₄O)]Cl

$M_r = 434.84$

Monoclinic, $P2_1/c$

$a = 12.2687$ (17) Å

$b = 13.0277$ (18) Å

$c = 12.7118$ (18) Å

$\beta = 111.365$ (2)°

$V = 1892.1$ (5) Å³

$Z = 4$

$F(000) = 900$

$D_x = 1.526$ Mg m⁻³

Mo $K\alpha$ radiation, $\lambda = 0.71073$ Å

Cell parameters from 3813 reflections

$\theta = 2.5$ – 26.7 °

$\mu = 1.45$ mm⁻¹

$T = 298$ K

Block, green

$0.48 \times 0.40 \times 0.37$ mm

Data collection

Bruker CCD area-detector
diffractometer

Radiation source: fine-focus sealed tube

Graphite monochromator

ϕ and ω scans

Absorption correction: multi-scan
(*SADABS*; Sheldrick, 1996)

$T_{\min} = 0.543$, $T_{\max} = 0.616$

9597 measured reflections

3320 independent reflections

2646 reflections with $I > 2\sigma(I)$

$R_{\text{int}} = 0.027$

$\theta_{\max} = 25.0$ °, $\theta_{\min} = 1.8$ °

$h = -14 \rightarrow 14$

$k = -15 \rightarrow 12$

$l = -14 \rightarrow 15$

Refinement

Refinement on F^2
 Least-squares matrix: full
 $R[F^2 > 2\sigma(F^2)] = 0.034$
 $wR(F^2) = 0.099$
 $S = 1.00$
 3320 reflections
 226 parameters
 0 restraints
 Primary atom site location: structure-invariant
 direct methods

Secondary atom site location: difference Fourier
 map
 Hydrogen site location: inferred from
 neighbouring sites
 H-atom parameters constrained
 $w = 1/[\sigma^2(F_o^2) + (0.0538P)^2 + 1.3872P]$
 where $P = (F_o^2 + 2F_c^2)/3$
 $(\Delta/\sigma)_{\max} = 0.001$
 $\Delta\rho_{\max} = 0.59 \text{ e } \text{\AA}^{-3}$
 $\Delta\rho_{\min} = -0.40 \text{ e } \text{\AA}^{-3}$

Special details

Geometry. All e.s.d.'s (except the e.s.d. in the dihedral angle between two l.s. planes) are estimated using the full covariance matrix. The cell e.s.d.'s are taken into account individually in the estimation of e.s.d.'s in distances, angles and torsion angles; correlations between e.s.d.'s in cell parameters are only used when they are defined by crystal symmetry. An approximate (isotropic) treatment of cell e.s.d.'s is used for estimating e.s.d.'s involving l.s. planes.

Refinement. Refinement of F^2 against ALL reflections. The weighted R -factor wR and goodness of fit S are based on F^2 , conventional R -factors R are based on F , with F set to zero for negative F^2 . The threshold expression of $F^2 > \sigma(F^2)$ is used only for calculating R -factors(gt) *etc.* and is not relevant to the choice of reflections for refinement. R -factors based on F^2 are statistically about twice as large as those based on F , and R -factors based on ALL data will be even larger.

Fractional atomic coordinates and isotropic or equivalent isotropic displacement parameters (\AA^2)

	x	y	z	$U_{\text{iso}}^*/U_{\text{eq}}$
Cu1	0.70712 (3)	0.22917 (3)	0.92710 (3)	0.03282 (14)
Cl1	0.59641 (8)	0.15391 (7)	0.72264 (7)	0.0511 (2)
Cl2	0.26659 (9)	0.14202 (8)	0.07523 (10)	0.0662 (3)
N1	0.8689 (2)	0.22822 (18)	0.9363 (2)	0.0327 (6)
N2	0.7491 (2)	0.09353 (18)	1.0070 (2)	0.0342 (6)
H2	0.7261	0.0426	0.9545	0.041*
N3	0.5626 (2)	0.22573 (19)	0.9765 (2)	0.0377 (6)
H3	0.5809	0.2667	1.0385	0.045*
N4	0.4596 (3)	0.4130 (2)	0.8025 (3)	0.0599 (8)
H4A	0.4462	0.4803	0.7985	0.090*
H4B	0.4206	0.3844	0.7358	0.090*
H4C	0.5359	0.4017	0.8212	0.090*
O1	0.69138 (17)	0.37176 (15)	0.88974 (19)	0.0406 (5)
C1	0.9272 (3)	0.3033 (2)	0.9185 (2)	0.0328 (7)
H1	1.0057	0.2918	0.9308	0.039*
C2	0.8815 (2)	0.4046 (2)	0.8810 (2)	0.0304 (6)
C3	0.7695 (3)	0.4344 (2)	0.8753 (2)	0.0328 (7)
C4	0.7349 (3)	0.5390 (2)	0.8524 (3)	0.0400 (7)
H4	0.6622	0.5597	0.8519	0.048*
C5	0.8061 (3)	0.6090 (2)	0.8313 (3)	0.0418 (8)
H5	0.7816	0.6769	0.8181	0.050*
C6	0.9163 (3)	0.5815 (2)	0.8290 (3)	0.0372 (7)
C7	0.9567 (3)	0.4795 (2)	0.8561 (2)	0.0332 (7)
C8	1.0697 (3)	0.4563 (2)	0.8560 (3)	0.0438 (8)
H8	1.0987	0.3900	0.8728	0.053*

C9	1.1367 (3)	0.5298 (3)	0.8319 (3)	0.0502 (9)
H9	1.2108	0.5127	0.8333	0.060*
C10	1.0955 (3)	0.6301 (3)	0.8050 (3)	0.0499 (9)
H10	1.1418	0.6794	0.7887	0.060*
C11	0.9881 (3)	0.6547 (3)	0.8030 (3)	0.0471 (8)
H11	0.9605	0.7213	0.7842	0.057*
C12	0.9279 (3)	0.1298 (2)	0.9797 (3)	0.0411 (8)
H12A	1.0116	0.1403	1.0163	0.049*
H12B	0.9145	0.0815	0.9182	0.049*
C13	0.8775 (3)	0.0893 (2)	1.0628 (3)	0.0395 (7)
H13A	0.9029	0.0192	1.0836	0.047*
H13B	0.9029	0.1310	1.1307	0.047*
C14	0.6823 (3)	0.0837 (3)	1.0821 (3)	0.0460 (8)
H14A	0.7172	0.1258	1.1490	0.055*
H14B	0.6820	0.0129	1.1055	0.055*
C15	0.5603 (3)	0.1189 (2)	1.0168 (3)	0.0470 (8)
H15A	0.5244	0.0738	0.9527	0.056*
H15B	0.5140	0.1163	1.0644	0.056*
C16	0.4418 (3)	0.2538 (3)	0.9023 (4)	0.0547 (10)
H16A	0.3873	0.2243	0.9333	0.066*
H16B	0.4255	0.2236	0.8284	0.066*
C17	0.4203 (4)	0.3678 (3)	0.8885 (4)	0.0680 (12)
H17A	0.3373	0.3808	0.8678	0.082*
H17B	0.4609	0.4012	0.9604	0.082*

Atomic displacement parameters (Å²)

	U^{11}	U^{22}	U^{33}	U^{12}	U^{13}	U^{23}
Cu1	0.0285 (2)	0.0288 (2)	0.0378 (2)	0.00173 (14)	0.00819 (16)	0.00456 (15)
C11	0.0517 (5)	0.0531 (5)	0.0416 (5)	-0.0067 (4)	0.0088 (4)	-0.0052 (4)
C12	0.0524 (6)	0.0529 (6)	0.0853 (7)	0.0006 (4)	0.0156 (5)	-0.0208 (5)
N1	0.0287 (13)	0.0297 (13)	0.0362 (14)	0.0036 (10)	0.0075 (11)	0.0021 (11)
N2	0.0332 (14)	0.0299 (13)	0.0334 (14)	-0.0002 (10)	0.0048 (11)	0.0015 (11)
N3	0.0373 (14)	0.0330 (14)	0.0456 (16)	-0.0008 (11)	0.0183 (12)	0.0041 (11)
N4	0.0419 (17)	0.0528 (19)	0.077 (2)	0.0075 (14)	0.0127 (16)	0.0175 (17)
O1	0.0283 (11)	0.0320 (12)	0.0581 (14)	0.0030 (9)	0.0117 (10)	0.0069 (10)
C1	0.0287 (15)	0.0347 (16)	0.0330 (16)	0.0019 (12)	0.0087 (13)	-0.0028 (13)
C2	0.0323 (15)	0.0295 (15)	0.0249 (15)	-0.0011 (12)	0.0050 (12)	-0.0033 (12)
C3	0.0349 (16)	0.0288 (15)	0.0304 (16)	-0.0018 (13)	0.0066 (13)	-0.0024 (12)
C4	0.0362 (17)	0.0326 (17)	0.047 (2)	0.0045 (13)	0.0108 (15)	0.0005 (14)
C5	0.048 (2)	0.0275 (16)	0.0448 (19)	0.0033 (14)	0.0114 (16)	0.0015 (14)
C6	0.0415 (18)	0.0325 (16)	0.0332 (17)	-0.0052 (13)	0.0083 (14)	-0.0007 (13)
C7	0.0345 (16)	0.0344 (16)	0.0258 (15)	-0.0035 (13)	0.0051 (13)	-0.0055 (12)
C8	0.0436 (19)	0.0414 (19)	0.047 (2)	-0.0032 (15)	0.0172 (16)	0.0012 (15)
C9	0.042 (2)	0.057 (2)	0.054 (2)	-0.0056 (16)	0.0204 (17)	0.0024 (17)
C10	0.053 (2)	0.051 (2)	0.047 (2)	-0.0159 (17)	0.0193 (18)	0.0033 (16)
C11	0.058 (2)	0.0377 (18)	0.0417 (19)	-0.0077 (16)	0.0135 (17)	0.0023 (15)
C12	0.0310 (17)	0.0336 (17)	0.054 (2)	0.0074 (13)	0.0098 (15)	0.0043 (14)

C13	0.0352 (17)	0.0320 (17)	0.0422 (18)	0.0044 (13)	0.0032 (14)	0.0063 (13)
C14	0.048 (2)	0.0414 (19)	0.049 (2)	0.0008 (15)	0.0181 (17)	0.0124 (16)
C15	0.047 (2)	0.0382 (18)	0.060 (2)	-0.0022 (15)	0.0240 (18)	0.0106 (16)
C16	0.0349 (19)	0.059 (2)	0.070 (3)	0.0065 (16)	0.0185 (18)	0.0179 (19)
C17	0.061 (3)	0.067 (3)	0.083 (3)	0.026 (2)	0.035 (2)	0.021 (2)

Geometric parameters (Å, °)

Cu1—O1	1.910 (2)	C5—H5	0.9300
Cu1—N1	1.946 (2)	C6—C7	1.415 (4)
Cu1—N2	2.010 (2)	C6—C11	1.417 (4)
Cu1—N3	2.085 (3)	C7—C8	1.420 (4)
Cu1—C11	2.6437 (9)	C8—C9	1.367 (5)
N1—C1	1.280 (4)	C8—H8	0.9300
N1—C12	1.477 (4)	C9—C10	1.398 (5)
N2—C14	1.472 (4)	C9—H9	0.9300
N2—C13	1.475 (4)	C10—C11	1.347 (5)
N2—H2	0.9100	C10—H10	0.9300
N3—C16	1.484 (4)	C11—H11	0.9300
N3—C15	1.487 (4)	C12—C13	1.502 (5)
N3—H3	0.9100	C12—H12A	0.9700
N4—C17	1.470 (5)	C12—H12B	0.9700
N4—H4A	0.8900	C13—H13A	0.9700
N4—H4B	0.8900	C13—H13B	0.9700
N4—H4C	0.8900	C14—C15	1.495 (5)
O1—C3	1.321 (3)	C14—H14A	0.9700
C1—C2	1.445 (4)	C14—H14B	0.9700
C1—H1	0.9300	C15—H15A	0.9700
C2—C3	1.404 (4)	C15—H15B	0.9700
C2—C7	1.455 (4)	C16—C17	1.507 (5)
C3—C4	1.426 (4)	C16—H16A	0.9700
C4—C5	1.355 (4)	C16—H16B	0.9700
C4—H4	0.9300	C17—H17A	0.9700
C5—C6	1.410 (4)	C17—H17B	0.9700
O1—Cu1—N1	91.70 (9)	C6—C7—C2	119.3 (3)
O1—Cu1—N2	164.83 (10)	C8—C7—C2	123.6 (3)
N1—Cu1—N2	84.06 (10)	C9—C8—C7	121.2 (3)
O1—Cu1—N3	94.34 (9)	C9—C8—H8	119.4
N1—Cu1—N3	160.46 (11)	C7—C8—H8	119.4
N2—Cu1—N3	85.30 (10)	C8—C9—C10	121.0 (3)
O1—Cu1—C11	98.46 (7)	C8—C9—H9	119.5
N1—Cu1—C11	101.77 (8)	C10—C9—H9	119.5
N2—Cu1—C11	96.66 (7)	C11—C10—C9	119.5 (3)
N3—Cu1—C11	95.70 (8)	C11—C10—H10	120.3
C1—N1—C12	120.0 (3)	C9—C10—H10	120.3
C1—N1—Cu1	127.5 (2)	C10—C11—C6	121.4 (3)
C12—N1—Cu1	112.23 (19)	C10—C11—H11	119.3

C14—N2—C13	115.7 (2)	C6—C11—H11	119.3
C14—N2—Cu1	107.68 (18)	N1—C12—C13	107.3 (2)
C13—N2—Cu1	107.95 (18)	N1—C12—H12A	110.3
C14—N2—H2	108.4	C13—C12—H12A	110.3
C13—N2—H2	108.4	N1—C12—H12B	110.3
Cu1—N2—H2	108.4	C13—C12—H12B	110.3
C16—N3—C15	108.0 (2)	H12A—C12—H12B	108.5
C16—N3—Cu1	124.5 (2)	N2—C13—C12	106.9 (2)
C15—N3—Cu1	104.42 (18)	N2—C13—H13A	110.4
C16—N3—H3	106.3	C12—C13—H13A	110.4
C15—N3—H3	106.3	N2—C13—H13B	110.4
Cu1—N3—H3	106.3	C12—C13—H13B	110.4
C17—N4—H4A	109.5	H13A—C13—H13B	108.6
C17—N4—H4B	109.5	N2—C14—C15	107.1 (3)
H4A—N4—H4B	109.5	N2—C14—H14A	110.3
C17—N4—H4C	109.5	C15—C14—H14A	110.3
H4A—N4—H4C	109.5	N2—C14—H14B	110.3
H4B—N4—H4C	109.5	C15—C14—H14B	110.3
C3—O1—Cu1	128.49 (18)	H14A—C14—H14B	108.6
N1—C1—C2	125.5 (3)	N3—C15—C14	109.7 (3)
N1—C1—H1	117.2	N3—C15—H15A	109.7
C2—C1—H1	117.2	C14—C15—H15A	109.7
C3—C2—C1	121.6 (3)	N3—C15—H15B	109.7
C3—C2—C7	119.3 (3)	C14—C15—H15B	109.7
C1—C2—C7	118.9 (3)	H15A—C15—H15B	108.2
O1—C3—C2	124.6 (3)	N3—C16—C17	114.1 (3)
O1—C3—C4	116.2 (3)	N3—C16—H16A	108.7
C2—C3—C4	119.2 (3)	C17—C16—H16A	108.7
C5—C4—C3	121.2 (3)	N3—C16—H16B	108.7
C5—C4—H4	119.4	C17—C16—H16B	108.7
C3—C4—H4	119.4	H16A—C16—H16B	107.6
C4—C5—C6	121.7 (3)	N4—C17—C16	113.0 (3)
C4—C5—H5	119.1	N4—C17—H17A	109.0
C6—C5—H5	119.1	C16—C17—H17A	109.0
C5—C6—C7	119.1 (3)	N4—C17—H17B	109.0
C5—C6—C11	121.1 (3)	C16—C17—H17B	109.0
C7—C6—C11	119.8 (3)	H17A—C17—H17B	107.8
C6—C7—C8	117.0 (3)		

Hydrogen-bond geometry (Å, °)

<i>D</i> —H... <i>A</i>	<i>D</i> —H	H... <i>A</i>	<i>D</i> ... <i>A</i>	<i>D</i> —H... <i>A</i>
N2—H2...Cl2 ⁱ	0.91	2.44	3.225 (3)	144
N3—H3...Cl1 ⁱⁱ	0.91	2.50	3.388 (3)	165
N4—H4A...Cl1 ⁱⁱⁱ	0.89	2.31	3.204 (3)	177

N4—H4B···Cl2 ⁱⁱ	0.89	2.25	3.079 (4)	156
N4—H4C···O1	0.89	1.83	2.703 (4)	167

Symmetry codes: (i) $-x+1, -y, -z+1$; (ii) $x, -y+1/2, z+1/2$; (iii) $-x+1, y+1/2, -z+3/2$.