

Acta Crystallographica Section E

Structure Reports

Online

ISSN 1600-5368

Racemic 1,2,3,4,7,8,9,10-octafluoro-6*H*,12*H*-5,11-methanodibenzo[*b,f*][1,5]-diazocine: an octafluorinated analogue of Tröger's base

Christophe M. L. Vande Velde,^a Delphine Didier,^a Frank Blockhuys^b and Sergey Sergeev^{a*}

^aLaboratoire de Chimie des Polymères, Université Libre de Bruxelles, CP 206/1 Boulevard du Triomphe, 1050 Bruxelles, Belgium, and ^bDepartment of Chemistry, University of Antwerp, Universiteitsplein 1, 2610 Wilrijk, Belgium
Correspondence e-mail: ssergeev@ulb.ac.be

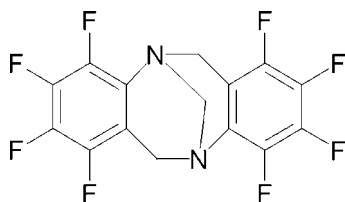
Received 4 January 2008; accepted 23 January 2008

Key indicators: single-crystal X-ray study; $T = 290$ K, $P = 0.0$ kPa; mean $\sigma(C-C) = 0.004$ Å; R factor = 0.044; wR factor = 0.129; data-to-parameter ratio = 9.6.

The title compound, $C_{15}H_6F_8N_2$, possesses a non-crystallographic twofold axis. The dihedral angle between the two benzene rings is $98.4(2)^\circ$. The crystal structure involves intermolecular C—H...F hydrogen bonds.

Related literature

For recent reviews on the chemistry of Tröger's base (Tröger, 1887; Spielman, 1935), see: Valík *et al.* (2005) and Dolensky *et al.* (2007). For related literature on the chirality of Tröger's base, see: Prelog & Wieland (1944); for molecular clefts, see: Wilcox *et al.* (1987) and Artacho *et al.* (2006) and references cited therein; for (poly)halo-substituted Tröger's base analogues, see: Jensen & Wärnmark (2001), Sergeev & Diederich (2004), Hansson *et al.* (2003), Li *et al.* (2005) and Faroughi *et al.* (2006). For related literature, see: Zabrodsky *et al.* (1993).



Experimental

Crystal data

$C_{15}H_6F_8N_2$
 $M_r = 366.22$
Monoclinic, $P2_1/c$
 $a = 8.075(3)$ Å
 $b = 10.469(2)$ Å
 $c = 17.628(6)$ Å
 $\beta = 117.15(2)^\circ$

$V = 1326.0(8)$ Å³
 $Z = 4$
Mo $K\alpha$ radiation
 $\mu = 0.19$ mm⁻¹
 $T = 290(1)$ K
 $0.3 \times 0.2 \times 0.2$ mm

Data collection

Enraf–Nonius MACH3 diffractometer
Absorption correction: none
5028 measured reflections
2412 independent reflections

1353 reflections with $I > 2\sigma(I)$
 $R_{int} = 0.078$
3 standard reflections every 73 reflections
intensity decay: 4%

Refinement

$R[F^2 > 2\sigma(F^2)] = 0.044$
 $wR(F^2) = 0.128$
 $S = 1.03$
2412 reflections

251 parameters
All H-atom parameters refined
 $\Delta\rho_{max} = 0.20$ e Å⁻³
 $\Delta\rho_{min} = -0.25$ e Å⁻³

Table 1

C—H...F contacts (Å, °).

| C—H...F | C—H | H...F | C...F | C—H...F |
|------------------------------|----------|----------|-----------|---------|
| C13—H132...F10 ⁱ | 0.93 (3) | 2.41 (3) | 3.257 (4) | 151 (3) |
| C13—H131...F1 ⁱⁱ | 0.98 (4) | 2.46 (3) | 3.287 (5) | 143 (2) |
| C12—H122...F7 ⁱⁱⁱ | 0.98 (3) | 2.52 (3) | 3.336 (4) | 141 (3) |

Symmetry codes: (i) $-x, -\frac{1}{2} + y, \frac{1}{2} - z$, (ii) $x - 1, y, z$, (iii) $x, \frac{1}{2} - y, -\frac{1}{2} + z$.

Data collection: *CAD-4 EXPRESS* (Enraf–Nonius, 1994); cell refinement: *CAD-4 EXPRESS*; data reduction: *XCAD4* (Harms & Wocadlo, 1995); program(s) used to solve structure: *SHELXS97* (Sheldrick, 2008); program(s) used to refine structure: *SHELXL97* (Sheldrick, 2008); molecular graphics: *ORTEP-3 for Windows* (Farrugia, 1997) and *Mercury* (Macrae *et al.*, 2006); software used to prepare material for publication: *WinGX* (Farrugia, 1999) and *PLATON* (Spek, 2003).

S. Sergeev is grateful to Professor Y. Geerts (Université Libre de Bruxelles) for the opportunity to conduct an independent research programme in his laboratory and for generous financial support.

Supplementary data and figures for this paper are available from the IUCr electronic archives (Reference: PK2080).

References

- Artacho, J., Nilsson, P., Bergquist, K.-E., Wendt, O. F. & Wärnmark, K. (2006). *Chem. Eur. J.* **12**, 2692–2701.
- Dolensky, B., Elguero, J., Král, V., Pardo, C. & Valík, M. (2007). *Adv. Heterocycl. Chem.* **93**, 1–56.
- Enraf–Nonius (1994). *CAD-4 EXPRESS*. Enraf–Nonius, Delft, The Netherlands.
- Faroughi, M., Try, A. C. & Turner, P. (2006). *Acta Cryst.* **E62**, o3893–o3894.
- Farrugia, L. J. (1997). *J. Appl. Cryst.* **30**, 565.
- Farrugia, L. J. (1999). *J. Appl. Cryst.* **32**, 837–838.
- Hansson, A., Jensen, J., Wendt, O. F. & Wärnmark, K. (2003). *Eur. J. Org. Chem.* pp. 3179–3188.
- Harms, K. & Wocadlo, S. (1995). *XCAD4*. University of Marburg, Germany.
- Jensen, J. & Wärnmark, K. (2001). *Synthesis*, pp. 1873–1877.
- Li, Z., Xu, X., Peng, Y., Jiang, Z., Ding, C. & Qian, X. (2005). *Synthesis*, pp. 1228–1230.
- Macrae, C. F., Edgington, P. R., McCabe, P., Pidcock, E., Shields, G. P., Taylor, R., Towler, M. & van de Streek, J. (2006). *J. Appl. Cryst.* **39**, 453–457.
- Prelog, V. & Wieland, P. (1944). *Helv. Chim. Acta*, **27**, 1127–1134.
- Sergeev, S. & Diederich, F. (2004). *Angew. Chem. Int. Ed.* **43**, 1738–1740.
- Sheldrick, G. M. (2008). *Acta Cryst.* **A64**, 112–122.
- Spek, A. L. (2003). *J. Appl. Cryst.* **36**, 7–13.
- Spielman, M. A. (1935). *J. Am. Chem. Soc.* **57**, 583–585.
- Tröger, J. (1887). *J. Prakt. Chem.* **36**, 225–245.
- Valík, M., Strongin, R. M. & Král, V. (2005). *Supramol. Chem.* **17**, 347–367.
- Wilcox, C. S., Greer, L. M. & Lynch, V. (1987). *J. Am. Chem. Soc.* **109**, 1865–1867.
- Zabrodsky, H., Peleg, S. & Avnir, D. (1993). *J. Am. Chem. Soc.* **115**, 8278–8289.

supporting information

Acta Cryst. (2008). E64, o538 [doi:10.1107/S1600536808002602]

Racemic 1,2,3,4,7,8,9,10-octafluoro-6*H*,12*H*-5,11-methanodibenzo[*b,f*][1,5]diazocine: an octafluorinated analogue of Tröger's base

Christophe M. L. Vande Velde, Delphine Didier, Frank Blockhuys and Sergey Sergeev

S1. Comment

1,2,3,4,7,8,9,10-Octafluoro-6*H*,12*H*-5,11-methanodibenzo[*b,f*][1,5]diazocine is a fluorinated derivative of Tröger's base (Tröger, 1887; Spielman, 1935), a polycyclic diamine which is chiral due to severely hindered inversion at the bridgehead N-atoms (Prelog & Wieland, 1944). For recent reviews on its chemistry, see Valík *et al.* (2005) and Dolensky *et al.* (2007). Recently, a considerable interest has developed in relatively unfunctionalized receptors with concave aromatic surfaces (termed molecular clefts or tweezers). Wilcox *et al.* (1987) pioneered the incorporation of the Tröger's base framework in chiral molecular clefts by fusing the methanodiazocine core of Tröger's base with two bicyclic aromatic building blocks. Later, molecular clefts comprising two or three fused methanodiazocine cores have been reported (Artacho *et al.*, 2006, and references cited therein). Our interest in the title compound was raised due to the prospect of using highly fluorinated aromatic systems in the design of molecular clefts, thus providing a possibility to explore different supramolecular interactions.

Synthesis of halo-derivatives of Tröger's base was pioneered by Wärnmark (Jensen & Wärnmark, 2001). Later, a number of fluoro-, chloro-, bromo-, and iodo-derivatives of Tröger's base, with the halogen atoms in different positions on the aromatic rings were reported (Sergeev & Diederich, 2004 and Hansson *et al.*, 2003). However, they typically contain only one halogen atom on each aromatic ring of the methanodiazocine skeleton. Exceptions are the recently reported 2,4,8,10-tetrafluoro- (Li *et al.*, 2005) and tetrabromo-analogs (Faroughi *et al.*, 2006) of Tröger's base. However, polyhalo-analogs of Tröger's base such as the octafluoro analog presented here are unprecedented. To the best of our knowledge, no X-ray crystal structure of a Tröger's base analog with fluorine in the aromatic ring has been reported.

The racemic octafluoro analog of Tröger's base crystallizes in the centrosymmetric space group $P2_1/c$ with one molecule in the asymmetric unit. The molecule has a non-crystallographic twofold symmetry axis through the bridging carbon C13. The CSM (Continuous Symmetry Measure) is 0.0183 (Zabrodsky *et al.*, 1993). Bond lengths and angles are within expectations. TLS analysis returns quasi-isotropic values for the librational amplitudes, and the values for the resulting corrections of the bond lengths are all below the 2σ level. The dihedral angle between the two benzene rings is $98.4(2)^\circ$, which lies within the normal range for analogs of Tröger's base (Dolensky *et al.*, 2007). Cohesion in the structure appears to be mainly provided by aromatic π - π interactions between the fluorinated benzene rings, leading to pairwise ordering of enantiomers around the centers of inversion, with an interplanar distance of under 4 Å. The most clear examples of this in the structure are $Cg(2) \cdots Cg(2)^i$ ($i = -x, 1 - y, 1 - z$), 3.713 (2) Å, 3.476 (3) Å perp., with a slippage of 1.305 (3) Å, and $Cg(1) \cdots Cg(1)^{ii}$ ($ii = 1 - x, -y, 1 - z$), 4.805 (2) Å, 3.538 (3) Å perp., with a slippage of 3.251 (3) Å. $Cg(x)$ indicates the centroid of benzene ring x , perp. indicates the perpendicular distance between the ring planes. Due to the lack of suitable hydrogen bond donors, the N-atoms display no close contacts whatsoever. There are a number of F- π contacts in the structure, e.g. $F(3) \cdots Cg(2)^{ii}$ 3.672 (3) Å, $C3 - F3 \cdots Cg(2)^{ii}$ 161.7 (2)°. Also, H—F contacts occur that are substantially shorter than the

van der Waals radii, but these are not usually understood as hydrogen bonds. They are given in Table 1.

S2. Experimental

2,3,4,5-Tetrafluoroaniline (330 mg, 2 mmol) and paraformaldehyde (120 mg, 4 mmol) were added under vigorous stirring to CF_3COOH (4 ml) at -15°C . The resulting mixture was allowed to reach room temperature and stirred for 14 days, then slowly added to a stirred mixture of ice and 30% aqueous NH_3 (7 ml). Extraction with CH_2Cl_2 (2 x 20 ml), drying of the organic layer over MgSO_4 , and removal of the solvent *in vacuo* gave a crude product which was purified by flash chromatography ($\text{SiO}_2/\text{CH}_2\text{Cl}_2$). Yield of the title compound: 135 mg (37%). Crystals suitable for X-ray diffraction were grown by slow evaporation from CHCl_3 solution.

^1H NMR (300 MHz, CDCl_3 , 25°C): δ = 4.20–4.30 (m, 4H, H61, H62, H121, H122), 4.50 (d, J = 17.5 Hz, 2H, H131, H132); ^{13}C NMR (75 MHz, CDCl_3 , 25°C): δ = 50.1, 66.5, 111.9 (ddt, J = 17.7, 3.4, 1.7 Hz), 130.8 (dddd, J = 10.6, 5.2, 3.7, 1.9 Hz), 137.3 (dddd, J = 252.0, 16.5, 13.0, 3.1 Hz), 140.2 (dddd, J = 251.3, 14.9, 13.0, 5.0 Hz), 141.7 (dddd, J = 248.2, 11.2, 4.1, 1.3 Hz), 144.0 (ddt, J = 245.2, 10.9, 3.7 Hz). HR—EI—MS: m/z : calcd. for $\text{C}_{15}\text{H}_6\text{F}_8\text{N}_2$ ($[\text{M}]^+$): 366.0403; found: 366.0405.

S3. Refinement

Hydrogen atoms were located in the Fourier difference map and refined freely. (C—H 0.93 (3)–1.03 (3) Å)

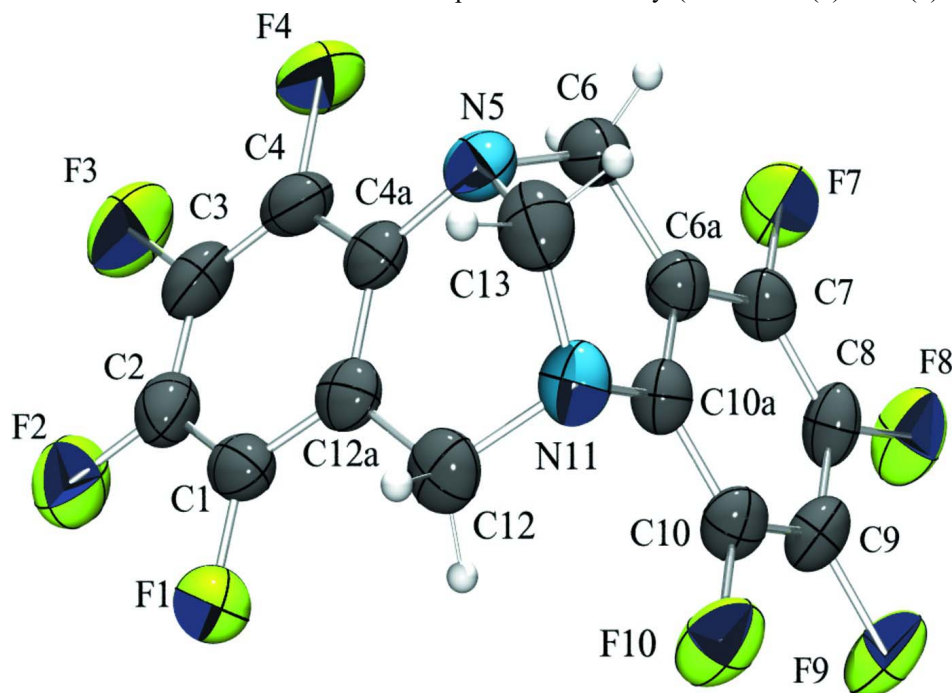


Figure 1

View of the structure with 50% probability displacement ellipsoids. H atoms are numbered according to their attached C-atoms.

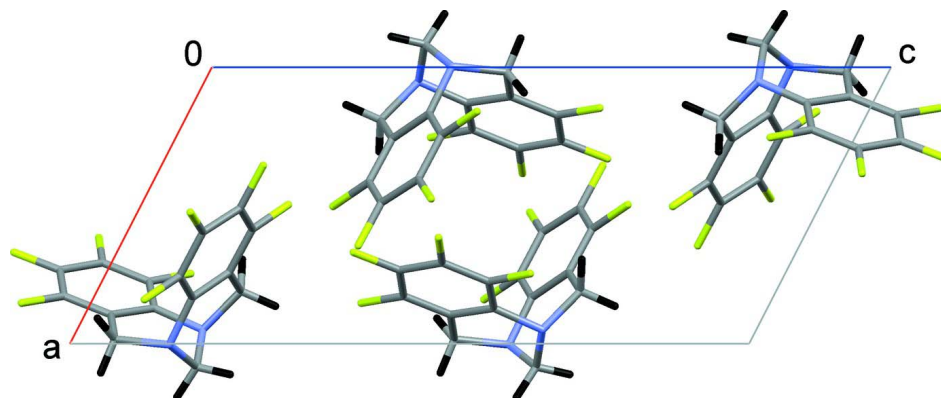


Figure 2

View of the unit cell down the *b* axis.

1,2,3,4,7,8,9,10-octafluoro-5,6,11,12-tetrahydro-5,11- μ ethanodibenzo[*b,f*][1,5]diazocine

Crystal data

$C_{15}H_6F_8N_2$
 $M_r = 366.22$
 Monoclinic, $P2_1/c$
 Hall symbol: -P 2ybc
 $a = 8.075$ (3) Å
 $b = 10.469$ (2) Å
 $c = 17.628$ (6) Å
 $\beta = 117.15$ (2)°
 $V = 1326.0$ (8) Å³
 $Z = 4$

$F(000) = 728$
 $D_x = 1.834$ Mg m⁻³
 Melting point: 192(1) K
 Mo $K\alpha$ radiation, $\lambda = 0.71073$ Å
 Cell parameters from 25 reflections
 $\theta = 5\text{--}12^\circ$
 $\mu = 0.19$ mm⁻¹
 $T = 290$ K
 Rhomb, colourless
 $0.3 \times 0.2 \times 0.2$ mm

Data collection

Enraf–Nonius MACH3
 diffractometer
 Radiation source: sealed tube
 Pyrolytic graphite monochromator
 profiled $\omega/2\theta$ scans
 5028 measured reflections
 2412 independent reflections
 1353 reflections with $I > 2\sigma(I)$

$R_{\text{int}} = 0.078$
 $\theta_{\text{max}} = 25.3^\circ$, $\theta_{\text{min}} = 2.3^\circ$
 $h = 0 \rightarrow 9$
 $k = -12 \rightarrow 12$
 $l = -21 \rightarrow 18$
 3 standard reflections every 73 reflections
 intensity decay: 4%

Refinement

Refinement on F^2
 Least-squares matrix: full
 $R[F^2 > 2\sigma(F^2)] = 0.044$
 $wR(F^2) = 0.128$
 $S = 1.03$
 2412 reflections
 251 parameters
 0 restraints
 0 constraints
 Primary atom site location: structure-invariant
 direct methods

Secondary atom site location: difference Fourier
 map
 Hydrogen site location: difference Fourier map
 All H-atom parameters refined
 $w = 1/[\sigma^2(F_o^2) + (0.06P)^2]$
 where $P = (F_o^2 + 2F_c^2)/3$
 $(\Delta/\sigma)_{\text{max}} < 0.001$
 $\Delta\rho_{\text{max}} = 0.20$ e Å⁻³
 $\Delta\rho_{\text{min}} = -0.25$ e Å⁻³
 Extinction correction: *SHELXL97* (Sheldrick,
 2008), $F_c^* = kF_c[1 + 0.001x F_c^2 \lambda^3 / \sin(2\theta)]^{-1/4}$
 Extinction coefficient: 0.008 (2)

Special details

Geometry. All e.s.d.'s (except the e.s.d. in the dihedral angle between two l.s. planes) are estimated using the full covariance matrix. The cell e.s.d.'s are taken into account individually in the estimation of e.s.d.'s in distances, angles and torsion angles; correlations between e.s.d.'s in cell parameters are only used when they are defined by crystal symmetry. An approximate (isotropic) treatment of cell e.s.d.'s is used for estimating e.s.d.'s involving l.s. planes.

Fractional atomic coordinates and isotropic or equivalent isotropic displacement parameters (\AA^2)

| | <i>x</i> | <i>y</i> | <i>z</i> | $U_{\text{iso}}^*/U_{\text{eq}}$ |
|------|-------------|---------------|--------------|----------------------------------|
| H131 | −0.193 (4) | 0.216 (3) | 0.8025 (17) | 0.051 (8)* |
| H121 | 0.305 (4) | 0.121 (3) | 0.810 (2) | 0.069 (9)* |
| H122 | 0.136 (5) | 0.176 (3) | 0.726 (2) | 0.077 (10)* |
| H62 | −0.105 (5) | 0.310 (3) | 0.9326 (17) | 0.057 (9)* |
| H132 | −0.111 (4) | 0.269 (3) | 0.741 (2) | 0.060 (9)* |
| H61 | 0.092 (4) | 0.374 (3) | 0.9788 (19) | 0.053 (9)* |
| F7 | 0.1474 (3) | 0.21118 (18) | 1.10195 (11) | 0.0715 (6) |
| F10 | 0.2539 (3) | −0.08189 (16) | 0.87533 (11) | 0.0699 (6) |
| F1 | 0.5029 (3) | 0.29145 (19) | 0.78363 (12) | 0.0679 (6) |
| F9 | 0.3839 (3) | −0.15905 (16) | 1.03755 (11) | 0.0729 (6) |
| N11 | 0.0509 (3) | 0.1395 (2) | 0.81513 (13) | 0.0506 (6) |
| F8 | 0.3308 (3) | −0.01382 (19) | 1.15148 (10) | 0.0730 (6) |
| C12A | 0.2581 (4) | 0.3151 (3) | 0.81963 (16) | 0.0467 (7) |
| F4 | 0.1600 (3) | 0.58222 (17) | 0.92368 (14) | 0.0845 (7) |
| F3 | 0.4753 (3) | 0.66558 (18) | 0.92211 (15) | 0.0919 (7) |
| C10A | 0.1288 (4) | 0.1067 (3) | 0.90262 (15) | 0.0417 (6) |
| C9 | 0.2933 (4) | −0.0464 (3) | 1.01318 (17) | 0.0489 (7) |
| F2 | 0.6451 (3) | 0.5220 (2) | 0.85025 (14) | 0.0852 (6) |
| C7 | 0.1727 (4) | 0.1397 (3) | 1.04471 (16) | 0.0471 (7) |
| N5 | −0.0035 (3) | 0.3514 (2) | 0.85287 (15) | 0.0570 (7) |
| C4A | 0.1674 (4) | 0.3903 (3) | 0.85490 (17) | 0.0488 (7) |
| C1 | 0.4148 (4) | 0.3626 (3) | 0.81791 (18) | 0.0510 (8) |
| C8 | 0.2668 (4) | 0.0260 (3) | 1.07054 (16) | 0.0491 (7) |
| C10 | 0.2252 (4) | −0.0074 (3) | 0.93048 (16) | 0.0450 (7) |
| C6A | 0.1055 (4) | 0.1831 (3) | 0.96176 (17) | 0.0460 (7) |
| C13 | −0.0834 (5) | 0.2423 (4) | 0.7960 (2) | 0.0611 (9) |
| C2 | 0.4898 (4) | 0.4799 (3) | 0.8519 (2) | 0.0583 (8) |
| C4 | 0.2450 (5) | 0.5081 (3) | 0.88958 (18) | 0.0584 (8) |
| C3 | 0.4040 (5) | 0.5512 (3) | 0.8886 (2) | 0.0616 (9) |
| C6 | 0.0168 (5) | 0.3137 (3) | 0.9374 (2) | 0.0577 (9) |
| C12 | 0.1908 (5) | 0.1805 (3) | 0.78815 (19) | 0.0530 (8) |

Atomic displacement parameters (\AA^2)

| | U^{11} | U^{22} | U^{33} | U^{12} | U^{13} | U^{23} |
|-----|-------------|-------------|-------------|-------------|-------------|-------------|
| F7 | 0.1095 (15) | 0.0648 (11) | 0.0538 (10) | 0.0031 (11) | 0.0490 (11) | −0.0071 (9) |
| F10 | 0.1081 (15) | 0.0474 (10) | 0.0537 (10) | 0.0049 (10) | 0.0364 (10) | −0.0103 (8) |
| F1 | 0.0709 (12) | 0.0683 (12) | 0.0764 (12) | 0.0122 (10) | 0.0440 (10) | 0.0101 (10) |
| F9 | 0.0981 (15) | 0.0433 (10) | 0.0660 (12) | 0.0137 (10) | 0.0276 (10) | 0.0114 (9) |

| | | | | | | |
|------|-------------|-------------|-------------|--------------|-------------|--------------|
| N11 | 0.0534 (14) | 0.0571 (16) | 0.0335 (12) | 0.0002 (13) | 0.0130 (10) | 0.0035 (11) |
| F8 | 0.1033 (15) | 0.0666 (12) | 0.0379 (9) | 0.0000 (11) | 0.0224 (9) | 0.0098 (9) |
| C12A | 0.0484 (17) | 0.0506 (16) | 0.0352 (14) | 0.0092 (14) | 0.0139 (12) | 0.0113 (13) |
| F4 | 0.1074 (17) | 0.0539 (11) | 0.1061 (16) | 0.0224 (11) | 0.0607 (14) | -0.0004 (11) |
| F3 | 0.1082 (17) | 0.0477 (11) | 0.1105 (17) | -0.0089 (12) | 0.0419 (14) | -0.0055 (12) |
| C10A | 0.0435 (15) | 0.0430 (14) | 0.0348 (14) | -0.0044 (13) | 0.0144 (12) | 0.0002 (12) |
| C9 | 0.0557 (17) | 0.0351 (15) | 0.0481 (16) | 0.0008 (14) | 0.0170 (14) | 0.0039 (13) |
| F2 | 0.0694 (13) | 0.0731 (13) | 0.1142 (16) | -0.0077 (11) | 0.0429 (12) | 0.0129 (12) |
| C7 | 0.0589 (18) | 0.0477 (17) | 0.0397 (15) | -0.0058 (15) | 0.0268 (13) | -0.0068 (13) |
| N5 | 0.0536 (15) | 0.0572 (15) | 0.0577 (15) | 0.0156 (14) | 0.0233 (12) | 0.0161 (13) |
| C4A | 0.0512 (17) | 0.0468 (17) | 0.0455 (16) | 0.0137 (15) | 0.0195 (14) | 0.0172 (14) |
| C1 | 0.0523 (17) | 0.0547 (19) | 0.0478 (16) | 0.0145 (16) | 0.0244 (14) | 0.0120 (14) |
| C8 | 0.0609 (18) | 0.0467 (16) | 0.0316 (14) | -0.0078 (15) | 0.0140 (13) | 0.0058 (13) |
| C10 | 0.0570 (17) | 0.0389 (15) | 0.0376 (14) | -0.0047 (14) | 0.0201 (13) | -0.0074 (13) |
| C6A | 0.0489 (17) | 0.0457 (16) | 0.0443 (15) | 0.0000 (13) | 0.0220 (13) | 0.0014 (13) |
| C13 | 0.0468 (19) | 0.078 (2) | 0.0480 (19) | 0.0021 (17) | 0.0123 (15) | 0.0164 (18) |
| C2 | 0.0519 (19) | 0.0541 (18) | 0.067 (2) | 0.0070 (16) | 0.0250 (16) | 0.0183 (16) |
| C4 | 0.072 (2) | 0.0476 (18) | 0.0587 (19) | 0.0222 (17) | 0.0330 (17) | 0.0108 (16) |
| C3 | 0.067 (2) | 0.0402 (17) | 0.067 (2) | 0.0048 (16) | 0.0217 (17) | 0.0091 (15) |
| C6 | 0.058 (2) | 0.058 (2) | 0.064 (2) | 0.0141 (17) | 0.0335 (18) | 0.0116 (17) |
| C12 | 0.063 (2) | 0.0587 (19) | 0.0358 (15) | 0.0005 (16) | 0.0215 (15) | 0.0011 (14) |

Geometric parameters (Å, °)

| | | | |
|--------------|-----------|--------------|------------|
| F7—C7 | 1.345 (3) | F2—C2 | 1.342 (3) |
| F10—C10 | 1.347 (3) | C7—C8 | 1.373 (4) |
| F1—C1 | 1.348 (3) | C7—C6A | 1.384 (4) |
| F9—C9 | 1.350 (3) | N5—C4A | 1.423 (4) |
| N11—C10A | 1.417 (3) | N5—C13 | 1.461 (4) |
| N11—C13 | 1.454 (4) | N5—C6 | 1.476 (4) |
| N11—C12 | 1.476 (4) | C4A—C4 | 1.393 (5) |
| F8—C8 | 1.343 (3) | C1—C2 | 1.380 (5) |
| C12A—C1 | 1.372 (4) | C6A—C6 | 1.513 (4) |
| C12A—C4A | 1.400 (4) | C13—H131 | 0.98 (3) |
| C12A—C12 | 1.520 (4) | C13—H132 | 0.93 (3) |
| F4—C4 | 1.346 (3) | C2—C3 | 1.365 (5) |
| F3—C3 | 1.343 (4) | C4—C3 | 1.368 (5) |
| C10A—C10 | 1.387 (4) | C6—H62 | 0.95 (3) |
| C10A—C6A | 1.393 (4) | C6—H61 | 0.95 (3) |
| C9—C8 | 1.357 (4) | C12—H121 | 1.03 (3) |
| C9—C10 | 1.365 (4) | C12—H122 | 0.98 (3) |
| C10A—N11—C13 | 110.2 (2) | C7—C6A—C10A | 118.7 (3) |
| C10A—N11—C12 | 113.3 (2) | C7—C6A—C6 | 120.2 (3) |
| C13—N11—C12 | 108.1 (3) | C10A—C6A—C6 | 121.0 (3) |
| C1—C12A—C4A | 118.7 (3) | N11—C13—N5 | 111.7 (2) |
| C1—C12A—C12 | 120.5 (3) | N11—C13—H131 | 112.5 (18) |
| C4A—C12A—C12 | 120.7 (3) | N5—C13—H131 | 106.2 (17) |

| | | | |
|------------------|------------|-----------------|------------|
| C10—C10A—C6A | 118.3 (2) | N11—C13—H132 | 105.1 (19) |
| C10—C10A—N11 | 119.5 (2) | N5—C13—H132 | 107 (2) |
| C6A—C10A—N11 | 122.1 (3) | H131—C13—H132 | 114 (3) |
| F9—C9—C8 | 119.9 (3) | F2—C2—C3 | 120.8 (3) |
| F9—C9—C10 | 119.8 (3) | F2—C2—C1 | 120.8 (3) |
| C8—C9—C10 | 120.3 (3) | C3—C2—C1 | 118.4 (3) |
| F7—C7—C8 | 119.0 (2) | F4—C4—C3 | 119.3 (3) |
| F7—C7—C6A | 119.3 (3) | F4—C4—C4A | 119.2 (3) |
| C8—C7—C6A | 121.7 (3) | C3—C4—C4A | 121.6 (3) |
| C4A—N5—C13 | 111.1 (3) | F3—C3—C2 | 119.2 (3) |
| C4A—N5—C6 | 113.0 (2) | F3—C3—C4 | 120.3 (3) |
| C13—N5—C6 | 107.1 (3) | C2—C3—C4 | 120.5 (3) |
| C4—C4A—C12A | 118.1 (3) | N5—C6—C6A | 110.4 (3) |
| C4—C4A—N5 | 120.1 (3) | N5—C6—H62 | 106.7 (17) |
| C12A—C4A—N5 | 121.8 (3) | C6A—C6—H62 | 109 (2) |
| F1—C1—C12A | 119.3 (3) | N5—C6—H61 | 109.5 (17) |
| F1—C1—C2 | 118.0 (3) | C6A—C6—H61 | 109.4 (18) |
| C12A—C1—C2 | 122.7 (3) | H62—C6—H61 | 112 (2) |
| F8—C8—C9 | 120.2 (3) | N11—C12—C12A | 110.5 (3) |
| F8—C8—C7 | 120.5 (3) | N11—C12—H121 | 113.2 (18) |
| C9—C8—C7 | 119.3 (2) | C12A—C12—H121 | 107.9 (19) |
| F10—C10—C9 | 118.6 (3) | N11—C12—H122 | 109 (2) |
| F10—C10—C10A | 119.8 (2) | C12A—C12—H122 | 111 (2) |
| C9—C10—C10A | 121.6 (3) | H121—C12—H122 | 105 (3) |
| | | | |
| C13—N11—C10A—C10 | 164.7 (3) | F7—C7—C6A—C6 | 4.4 (4) |
| C12—N11—C10A—C10 | -74.1 (3) | C8—C7—C6A—C6 | -174.9 (3) |
| C13—N11—C10A—C6A | -12.6 (4) | C10—C10A—C6A—C7 | -2.5 (4) |
| C12—N11—C10A—C6A | 108.7 (3) | N11—C10A—C6A—C7 | 174.8 (2) |
| C1—C12A—C4A—C4 | -2.4 (4) | C10—C10A—C6A—C6 | 174.6 (3) |
| C12—C12A—C4A—C4 | 174.4 (3) | N11—C10A—C6A—C6 | -8.1 (4) |
| C1—C12A—C4A—N5 | 175.1 (2) | C10A—N11—C13—N5 | 53.2 (3) |
| C12—C12A—C4A—N5 | -8.2 (4) | C12—N11—C13—N5 | -71.2 (3) |
| C13—N5—C4A—C4 | 165.8 (3) | C4A—N5—C13—N11 | 51.4 (3) |
| C6—N5—C4A—C4 | -73.8 (3) | C6—N5—C13—N11 | -72.5 (3) |
| C13—N5—C4A—C12A | -11.6 (3) | F1—C1—C2—F2 | 0.4 (4) |
| C6—N5—C4A—C12A | 108.8 (3) | C12A—C1—C2—F2 | 178.8 (3) |
| C4A—C12A—C1—F1 | -179.6 (2) | F1—C1—C2—C3 | -178.4 (3) |
| C12—C12A—C1—F1 | 3.7 (4) | C12A—C1—C2—C3 | 0.0 (4) |
| C4A—C12A—C1—C2 | 2.0 (4) | C12A—C4A—C4—F4 | 179.9 (2) |
| C12—C12A—C1—C2 | -174.7 (3) | N5—C4A—C4—F4 | 2.4 (4) |
| F9—C9—C8—F8 | 0.1 (4) | C12A—C4A—C4—C3 | 0.9 (4) |
| C10—C9—C8—F8 | 178.7 (3) | N5—C4A—C4—C3 | -176.6 (3) |
| F9—C9—C8—C7 | -179.3 (3) | F2—C2—C3—F3 | 1.1 (5) |
| C10—C9—C8—C7 | -0.8 (4) | C1—C2—C3—F3 | 179.9 (3) |
| F7—C7—C8—F8 | 0.7 (4) | F2—C2—C3—C4 | 179.6 (3) |
| C6A—C7—C8—F8 | 179.9 (3) | C1—C2—C3—C4 | -1.6 (5) |
| F7—C7—C8—C9 | -179.8 (3) | F4—C4—C3—F3 | 0.7 (4) |

| | | | |
|------------------|------------|-------------------|------------|
| C6A—C7—C8—C9 | -0.6 (4) | C4A—C4—C3—F3 | 179.7 (3) |
| F9—C9—C10—F10 | -1.3 (4) | F4—C4—C3—C2 | -177.8 (3) |
| C8—C9—C10—F10 | -179.9 (3) | C4A—C4—C3—C2 | 1.2 (5) |
| F9—C9—C10—C10A | 179.0 (3) | C4A—N5—C6—C6A | -75.7 (4) |
| C8—C9—C10—C10A | 0.5 (4) | C13—N5—C6—C6A | 47.0 (3) |
| C6A—C10A—C10—F10 | -178.4 (2) | C7—C6A—C6—N5 | 166.7 (3) |
| N11—C10A—C10—F10 | 4.2 (4) | C10A—C6A—C6—N5 | -10.4 (4) |
| C6A—C10A—C10—C9 | 1.2 (4) | C10A—N11—C12—C12A | -75.3 (3) |
| N11—C10A—C10—C9 | -176.2 (3) | C13—N11—C12—C12A | 47.2 (3) |
| F7—C7—C6A—C10A | -178.5 (3) | C1—C12A—C12—N11 | 166.2 (2) |
| C8—C7—C6A—C10A | 2.3 (4) | C4A—C12A—C12—N11 | -10.5 (4) |
