

Acta Crystallographica Section E

Structure Reports

Online

ISSN 1600-5368

4-(3-Nitrophenyl)-3-(phenylsulfonyl)but-3-en-2-one

Yongjiang Wang^a and Wen Pei^{b*}

^aCollege of Biological and Chemical Engineering, Zhejiang University of Science and Technology, Hangzhou 310023, People's Republic of China, and ^bCollege of Chemical Engineering and Materials Science, Zhejiang University of Technology, Hangzhou 310014, People's Republic of China
Correspondence e-mail: river0301@163.com

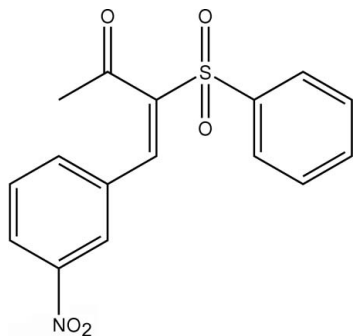
Received 29 November 2007; accepted 26 February 2008

Key indicators: single-crystal X-ray study; $T = 298$ K; mean $\sigma(\text{C}-\text{C}) = 0.002$ Å; R factor = 0.039; wR factor = 0.107; data-to-parameter ratio = 16.7.

The C=C double bond in the title molecule, $\text{C}_{16}\text{H}_{13}\text{NO}_5\text{S}$, has an *E* configuration. The crystal structure is stabilized by C—H...O hydrogen bonds. There is also a weak C—H... π -ring interaction in the structure.

Related literature

For related literature, see: Pei (1998). For the chemical preparation, see: Wada *et al.* (1996).



Experimental

Crystal data

$\text{C}_{16}\text{H}_{13}\text{NO}_5\text{S}$
 $M_r = 331.34$
Monoclinic, $P2_1/n$
 $a = 7.957$ (2) Å
 $b = 10.580$ (3) Å
 $c = 18.271$ (6) Å
 $\beta = 95.976$ (14)°

$V = 1529.7$ (8) Å³
 $Z = 4$
Mo $K\alpha$ radiation
 $\mu = 0.24$ mm⁻¹
 $T = 298$ (1) K
0.25 × 0.20 × 0.20 mm

Data collection

Rigaku R-Axis RAPID
diffractometer
Absorption correction: multi-scan
(*ABSCOR*; Higashi, 1995)
 $T_{\min} = 0.923$, $T_{\max} = 0.954$

14836 measured reflections
3507 independent reflections
2890 reflections with $I > 2\sigma(I)$
 $R_{\text{int}} = 0.027$

Refinement

$R[F^2 > 2\sigma(F^2)] = 0.038$
 $wR(F^2) = 0.106$
 $S = 1.05$
3507 reflections

210 parameters
H-atom parameters constrained
 $\Delta\rho_{\text{max}} = 0.34$ e Å⁻³
 $\Delta\rho_{\text{min}} = -0.40$ e Å⁻³

Table 1

Hydrogen-bond geometry (Å, °).

D—H...A	D—H	H...A	D...A	D—H...A
C4—H4...O4 ⁱ	0.93	2.60	3.104 (2)	114
C8—H8...O5 ⁱⁱ	0.93	2.53	3.321 (2)	143
C10—H10...O3 ⁱⁱⁱ	0.93	2.54	3.364 (2)	148
C13—H13...O5 ⁱⁱⁱ	0.93	2.59	3.433 (2)	152
C12—H12...O4	0.93	2.52	2.903 (2)	105
C16—H16...O4 ⁱ	0.93	2.60	3.524 (2)	176
C9—H9...Cg1 ⁱⁱ	0.93	2.80	3.608 (2)	145

Symmetry codes: (i) $-x + \frac{3}{2}, y - \frac{1}{2}, -z + \frac{1}{2}$; (ii) $x - \frac{1}{2}, -y + \frac{1}{2}, z - \frac{1}{2}$; (iii) $x + 1, y, z$. Cg1 is the centroid of the C11–C16 phenyl ring.

Data collection: *PROCESS-AUTO* (Rigaku, 1998); cell refinement: *PROCESS-AUTO*; data reduction: *CrystalStructure* (Rigaku/MS, 2004); program(s) used to solve structure: *SIR97* (Altomare *et al.*, 1999); program(s) used to refine structure: *SHELXL97* (Sheldrick, 2008); molecular graphics: *ORTEP-3 for Windows* (Farrugia, 1997); software used to prepare material for publication: *CrystalStructure*.

This work was supported by the Open Foundation of the Key Discipline of Industrial Catalysis.

Supplementary data and figures for this paper are available from the IUCr electronic archives (Reference: FB2081).

References

- Altomare, A., Burla, M. C., Camalli, M., Cascarano, G. L., Giacovazzo, C., Guagliardi, A., Moliterni, A. G. G., Polidori, G. & Spagna, R. (1999). *J. Appl. Cryst.* **32**, 115–119.
Farrugia, L. J. (1997). *J. Appl. Cryst.* **30**, 565.
Higashi, T. (1995). *ABSCOR*. Rigaku Corporation, Tokyo, Japan.
Pei, W. (1998). *Chem. J. Chin. Univ.* **19**, 402–404.
Rigaku (1998). *PROCESS-AUTO*. Rigaku Corporation, Tokyo, Japan.
Rigaku/MS (2004). *CrystalStructure*. Rigaku/MS, The Woodlands, Texas, USA.
Sheldrick, G. M. (2008). *Acta Cryst.* **A64**, 112–122.
Wada, E., Pei, W., Yasuoka, H., Chin, U. & Kanemasa, S. (1996). *Tetrahedron*, **52**, 1205–1220.

supporting information

Acta Cryst. (2008). E64, o640 [doi:10.1107/S1600536808005370]

4-(3-Nitrophenyl)-3-(phenylsulfonyl)but-3-en-2-one

Yongjiang Wang and Wen Pei

S1. Comment

Phenylsulfonyl-3-alken-2-ones have been used as asymmetric synthetic reagents (Wada *et al.*, 1996) as well as electron-deficient dienophiles. They have been applied in asymmetric Diels–Alder chemistry (Pei, 1998). The title compound has been prepared and studied in order to get a better understanding about the synthesis of phenylsulfonyl-3-alken-2-ones. The molecular structure, Fig. 1, shows that an *E*-configuration is present on the C=C double bond between the atoms C1 and C4. There is also present a C—H \cdots π -electron ring interaction in the structure. It involves the phenyl ring C11–C16 with centroid *Cg*1 (Table 1).

S2. Experimental

The title compound was prepared according to the procedure of Wada *et al.* (1996). Diffraction quality crystals were obtained by recrystallization from ethanol solution by slow evaporation at room temperature. The average dimension of the block crystals was about 0.2 mm.

S3. Refinement

All the H atoms were discerned in the difference Fourier map. Nevertheless, the H atoms were positioned into the idealized positions and their parameters were constrained in riding-mode approximation. The constraints: $C-H_{\text{aryl,alkenyl}}=0.93$ and $C-H_{\text{methyl}}=0.96$ Å. $U_{\text{iso}}(H_{\text{aryl,alkenyl}})=1.2U_{\text{eq}}(C_{\text{aryl,alkenyl}})$ and $U_{\text{iso}}(H_{\text{methyl}})=1.5U_{\text{eq}}(C_{\text{methyl}})$.

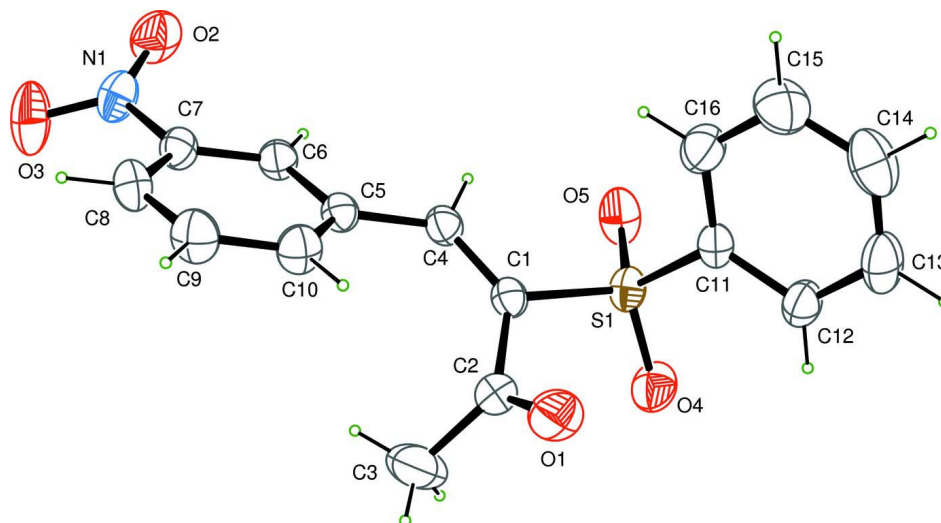


Figure 1

View of the title molecule showing the atom labelling scheme. The displacement ellipsoids are drawn at the 40% probability level.

4-(3-Nitrophenyl)-3-(phenylsulfonyl)but-3-en-2-one

Crystal data

C₁₆H₁₃NO₅S $M_r = 331.34$ Monoclinic, $P2_1/n$

Hall symbol: -P 2yn

 $a = 7.957 (2) \text{ \AA}$ $b = 10.580 (3) \text{ \AA}$ $c = 18.271 (6) \text{ \AA}$ $\beta = 95.976 (14)^\circ$ $V = 1529.7 (8) \text{ \AA}^3$ $Z = 4$ $F(000) = 688.00$ $D_x = 1.439 \text{ Mg m}^{-3}$ Mo $K\alpha$ radiation, $\lambda = 0.71075 \text{ \AA}$

Cell parameters from 12472 reflections

 $\theta = 3.2\text{--}27.5^\circ$ $\mu = 0.24 \text{ mm}^{-1}$ $T = 298 \text{ K}$

Block, colourless

 $0.25 \times 0.20 \times 0.20 \text{ mm}$

Data collection

Rigaku R-AXIS RAPID

diffractometer

Graphite monochromator

Detector resolution: $10.00 \text{ pixels mm}^{-1}$ ω scans

Absorption correction: multi-scan

(ABSCOR; Higashi, 1995)

 $T_{\min} = 0.923$, $T_{\max} = 0.954$

14836 measured reflections

3507 independent reflections

2890 reflections with $I > 2\sigma(I)$ $R_{\text{int}} = 0.027$ $\theta_{\max} = 27.5^\circ$, $\theta_{\min} = 3.2^\circ$ $h = -8 \rightarrow 10$ $k = -13 \rightarrow 13$ $l = -23 \rightarrow 23$

Refinement

Refinement on F^2

Least-squares matrix: full

 $R[F^2 > 2\sigma(F^2)] = 0.038$ $wR(F^2) = 0.106$ $S = 1.05$

3507 reflections

210 parameters

0 restraints

42 constraints

Primary atom site location: structure-invariant

direct methods

Secondary atom site location: difference Fourier map

Hydrogen site location: difference Fourier map

H-atom parameters constrained

 $w = 1/[\sigma^2(F_o^2) + (0.0516P)^2 + 0.4387P]$ where $P = (F_o^2 + 2F_c^2)/3$ $(\Delta/\sigma)_{\max} = 0.001$ $\Delta\rho_{\max} = 0.34 \text{ e \AA}^{-3}$ $\Delta\rho_{\min} = -0.40 \text{ e \AA}^{-3}$

Extinction correction: SHELXL97 (Sheldrick,

2008)

Extinction coefficient: $0.0097 (17)$

Special details

Geometry. ENTER SPECIAL DETAILS OF THE MOLECULAR GEOMETRY**Refinement.** Refinement using all reflections. The weighted R -factor (wR) and goodness of fit (S) are based on F^2 . R -factor (gt) are based on F . The threshold expression of $F^2 > 2.0 \sigma(F^2)$ is used only for calculating R -factor (gt).Fractional atomic coordinates and isotropic or equivalent isotropic displacement parameters (\AA^2)

	x	y	z	$U_{\text{iso}}^*/U_{\text{eq}}$
S1	0.84122 (5)	0.43647 (4)	0.25330 (2)	0.03894 (14)
O1	0.99494 (16)	0.40871 (14)	0.10399 (8)	0.0607 (4)
O2	0.02708 (17)	0.12269 (16)	0.11304 (9)	0.0674 (4)
O3	-0.02286 (17)	0.14516 (19)	-0.00423 (9)	0.0806 (5)
O4	0.89564 (17)	0.56378 (11)	0.24210 (8)	0.0568 (4)
O5	0.72060 (15)	0.41361 (14)	0.30472 (7)	0.0566 (4)
N1	0.07214 (18)	0.14380 (15)	0.05295 (9)	0.0508 (4)

C1	0.75310 (18)	0.37984 (14)	0.16622 (8)	0.0349 (3)
C2	0.8455 (2)	0.42725 (15)	0.10363 (9)	0.0418 (4)
C3	0.7499 (3)	0.5076 (2)	0.04658 (14)	0.0770 (7)
H31	0.8105	0.5121	0.0039	0.116*
H32	0.7371	0.5910	0.0659	0.116*
H33	0.6404	0.4713	0.0332	0.116*
C4	0.61399 (18)	0.30895 (15)	0.16516 (8)	0.0370 (3)
H4	0.5739	0.2956	0.2106	0.044*
C5	0.51608 (18)	0.24949 (14)	0.10202 (8)	0.0357 (3)
C6	0.34611 (19)	0.22278 (15)	0.10721 (9)	0.0376 (3)
H6	0.2974	0.2406	0.1502	0.045*
C7	0.25178 (19)	0.16961 (15)	0.04761 (9)	0.0385 (3)
C8	0.3182 (2)	0.13919 (17)	-0.01672 (9)	0.0473 (4)
H8	0.2507	0.1052	-0.0565	0.057*
C9	0.4884 (2)	0.16088 (19)	-0.02025 (10)	0.0526 (4)
H9	0.5374	0.1386	-0.0625	0.063*
C10	0.5862 (2)	0.21504 (17)	0.03795 (10)	0.0462 (4)
H10	0.7005	0.2289	0.0346	0.055*
C11	1.02028 (18)	0.34291 (15)	0.28003 (8)	0.0369 (3)
C12	1.1754 (2)	0.40079 (18)	0.29545 (9)	0.0453 (4)
H12	1.1883	0.4867	0.2868	0.054*
C13	1.3113 (2)	0.3282 (2)	0.32406 (11)	0.0590 (5)
H13	1.4168	0.3654	0.3350	0.071*
C14	1.2909 (3)	0.2017 (2)	0.33632 (12)	0.0655 (6)
H14	1.3824	0.1538	0.3563	0.079*
C15	1.1369 (3)	0.1452 (2)	0.31942 (13)	0.0658 (6)
H15	1.1252	0.0589	0.3271	0.079*
C16	0.9995 (2)	0.21509 (17)	0.29120 (11)	0.0524 (4)
H16	0.8947	0.1770	0.2799	0.063*

Atomic displacement parameters (\AA^2)

	U^{11}	U^{22}	U^{33}	U^{12}	U^{13}	U^{23}
S1	0.0325 (2)	0.0432 (2)	0.0403 (2)	0.00241 (15)	-0.00025 (15)	-0.00634 (16)
O1	0.0424 (7)	0.0742 (9)	0.0676 (9)	-0.0004 (6)	0.0163 (6)	0.0104 (7)
O2	0.0468 (7)	0.0850 (11)	0.0725 (10)	-0.0159 (7)	0.0157 (7)	-0.0016 (8)
O3	0.0393 (7)	0.1266 (15)	0.0713 (10)	0.0022 (8)	-0.0154 (7)	-0.0245 (10)
O4	0.0583 (8)	0.0375 (6)	0.0717 (9)	0.0017 (5)	-0.0075 (7)	-0.0083 (6)
O5	0.0395 (6)	0.0887 (10)	0.0420 (7)	0.0056 (6)	0.0062 (5)	-0.0108 (6)
N1	0.0348 (7)	0.0560 (9)	0.0606 (10)	-0.0022 (6)	0.0003 (7)	-0.0121 (7)
C1	0.0321 (7)	0.0371 (7)	0.0346 (7)	0.0026 (6)	-0.0009 (6)	0.0016 (6)
C2	0.0411 (8)	0.0418 (8)	0.0423 (9)	-0.0043 (7)	0.0038 (7)	0.0017 (6)
C3	0.0709 (14)	0.0856 (16)	0.0746 (15)	0.0032 (12)	0.0080 (12)	0.0424 (13)
C4	0.0335 (7)	0.0425 (8)	0.0344 (7)	0.0013 (6)	0.0012 (6)	0.0035 (6)
C5	0.0325 (7)	0.0384 (7)	0.0355 (7)	0.0008 (6)	0.0004 (6)	0.0036 (6)
C6	0.0345 (7)	0.0437 (8)	0.0348 (8)	-0.0007 (6)	0.0047 (6)	0.0001 (6)
C7	0.0319 (7)	0.0412 (8)	0.0413 (8)	0.0020 (6)	-0.0006 (6)	0.0001 (6)
C8	0.0476 (9)	0.0549 (10)	0.0377 (8)	0.0027 (8)	-0.0039 (7)	-0.0071 (7)

C9	0.0516 (10)	0.0671 (12)	0.0406 (9)	0.0026 (9)	0.0128 (8)	-0.0096 (8)
C10	0.0356 (8)	0.0568 (10)	0.0472 (9)	0.0010 (7)	0.0086 (7)	-0.0031 (8)
C11	0.0317 (7)	0.0447 (8)	0.0336 (7)	0.0004 (6)	0.0004 (6)	-0.0030 (6)
C12	0.0347 (8)	0.0575 (10)	0.0435 (9)	-0.0072 (7)	0.0031 (7)	-0.0021 (7)
C13	0.0308 (8)	0.0930 (16)	0.0526 (11)	0.0023 (9)	0.0016 (7)	-0.0053 (10)
C14	0.0525 (11)	0.0838 (15)	0.0587 (12)	0.0304 (11)	-0.0011 (9)	-0.0044 (11)
C15	0.0724 (14)	0.0492 (11)	0.0744 (14)	0.0161 (10)	0.0006 (11)	-0.0012 (9)
C16	0.0471 (10)	0.0451 (9)	0.0633 (11)	-0.0017 (7)	-0.0020 (8)	-0.0047 (8)

Geometric parameters (Å, °)

S1—O5	1.4317 (13)	C6—H6	0.9300
S1—O4	1.4360 (13)	C7—C8	1.376 (2)
S1—C11	1.7617 (16)	C8—C9	1.382 (3)
S1—C1	1.7747 (16)	C8—H8	0.9300
O1—C2	1.204 (2)	C9—C10	1.375 (2)
O2—N1	1.211 (2)	C9—H9	0.9300
O3—N1	1.224 (2)	C10—H10	0.9300
N1—C7	1.468 (2)	C11—C16	1.380 (2)
C1—C4	1.335 (2)	C11—C12	1.381 (2)
C1—C2	1.508 (2)	C12—C13	1.384 (3)
C2—C3	1.491 (3)	C12—H12	0.9300
C3—H31	0.9600	C13—C14	1.369 (3)
C3—H32	0.9600	C13—H13	0.9300
C3—H33	0.9600	C14—C15	1.369 (3)
C4—C5	1.465 (2)	C14—H14	0.9300
C4—H4	0.9300	C15—C16	1.375 (3)
C5—C6	1.394 (2)	C15—H15	0.9300
C5—C10	1.396 (2)	C16—H16	0.9300
C6—C7	1.377 (2)		
O5—S1—O4	118.99 (9)	C8—C7—C6	123.02 (15)
O5—S1—C11	107.53 (8)	C8—C7—N1	118.44 (14)
O4—S1—C11	108.63 (8)	C6—C7—N1	118.54 (14)
O5—S1—C1	107.57 (8)	C7—C8—C9	117.81 (15)
O4—S1—C1	106.61 (8)	C7—C8—H8	121.1
C11—S1—C1	106.95 (7)	C9—C8—H8	121.1
O2—N1—O3	124.14 (16)	C10—C9—C8	120.74 (16)
O2—N1—C7	118.48 (15)	C10—C9—H9	119.6
O3—N1—C7	117.38 (16)	C8—C9—H9	119.6
C4—C1—C2	130.13 (14)	C9—C10—C5	120.92 (15)
C4—C1—S1	116.88 (12)	C9—C10—H10	119.5
C2—C1—S1	112.89 (11)	C5—C10—H10	119.5
O1—C2—C3	121.90 (17)	C16—C11—C12	121.53 (15)
O1—C2—C1	120.05 (15)	C16—C11—S1	119.05 (12)
C3—C2—C1	117.76 (16)	C12—C11—S1	119.18 (13)
C2—C3—H31	109.5	C11—C12—C13	118.54 (18)
C2—C3—H32	109.5	C11—C12—H12	120.7

H31—C3—H32	109.5	C13—C12—H12	120.7
C2—C3—H33	109.5	C14—C13—C12	120.20 (18)
H31—C3—H33	109.5	C14—C13—H13	119.9
H32—C3—H33	109.5	C12—C13—H13	119.9
C1—C4—C5	128.65 (14)	C15—C14—C13	120.55 (18)
C1—C4—H4	115.7	C15—C14—H14	119.7
C5—C4—H4	115.7	C13—C14—H14	119.7
C6—C5—C10	118.61 (14)	C14—C15—C16	120.5 (2)
C6—C5—C4	118.26 (14)	C14—C15—H15	119.7
C10—C5—C4	123.10 (14)	C16—C15—H15	119.7
C7—C6—C5	118.80 (14)	C15—C16—C11	118.64 (18)
C7—C6—H6	120.6	C15—C16—H16	120.7
C5—C6—H6	120.6	C11—C16—H16	120.7
O4—S1—C1—C2	36.47 (12)	C4—C1—C2—C3	58.5 (2)
O4—S1—C1—C4	-140.16 (11)	C1—C4—C5—C6	-155.46 (15)
O4—S1—C11—C12	8.06 (15)	C1—C4—C5—C10	26.5 (2)
O4—S1—C11—C16	-177.55 (14)	C4—C5—C6—C7	178.54 (13)
O5—S1—C1—C2	165.12 (10)	C4—C5—C10—C9	-179.12 (15)
O5—S1—C1—C4	-11.50 (13)	C6—C5—C10—C9	2.9 (2)
O5—S1—C11—C12	-121.99 (13)	C10—C5—C6—C7	-3.4 (2)
O5—S1—C11—C16	52.59 (15)	C5—C6—C7—N1	-178.84 (13)
C1—S1—C11—C12	122.77 (13)	C5—C6—C7—C8	1.3 (2)
C1—S1—C11—C16	-62.81 (15)	N1—C7—C8—C9	-178.34 (14)
C11—S1—C1—C2	-79.59 (11)	C6—C7—C8—C9	1.6 (2)
C11—S1—C1—C4	103.79 (12)	C7—C8—C9—C10	-2.2 (2)
O2—N1—C7—C6	-28.2 (2)	C8—C9—C10—C5	-0.0 (2)
O2—N1—C7—C8	151.86 (15)	S1—C11—C12—C13	173.00 (13)
O3—N1—C7—C6	151.83 (16)	S1—C11—C16—C15	-173.37 (15)
O3—N1—C7—C8	-28.2 (2)	C12—C11—C16—C15	1.0 (2)
S1—C1—C2—O1	56.37 (18)	C16—C11—C12—C13	-1.3 (2)
S1—C1—C2—C3	-117.54 (15)	C11—C12—C13—C14	0.2 (2)
S1—C1—C4—C5	-179.53 (12)	C12—C13—C14—C15	1.0 (3)
C2—C1—C4—C5	4.5 (2)	C13—C14—C15—C16	-1.3 (3)
C4—C1—C2—O1	-127.56 (18)	C14—C15—C16—C11	0.3 (3)

Hydrogen-bond geometry (\AA , $^\circ$)

$D-H\cdots A$	$D-H$	$H\cdots A$	$D\cdots A$	$D-H\cdots A$
C4—H4 \cdots O4 ⁱ	0.93	2.60	3.104 (2)	114
C8—H8 \cdots O5 ⁱⁱ	0.93	2.53	3.321 (2)	143
C10—H10 \cdots O3 ⁱⁱⁱ	0.93	2.54	3.364 (2)	148
C13—H13 \cdots O5 ⁱⁱⁱ	0.93	2.59	3.433 (2)	152
C12—H12 \cdots O4	0.93	2.52	2.903 (2)	105
C16—H16 \cdots O4 ⁱ	0.93	2.60	3.524 (2)	176
C9—H9 \cdots Cg1 ⁱⁱ	0.93	2.80	3.608 (2)	145

Symmetry codes: (i) $-x+3/2, y-1/2, -z+1/2$; (ii) $x-1/2, -y+1/2, z-1/2$; (iii) $x+1, y, z$.