

Acta Crystallographica Section E

## Structure Reports

Online

ISSN 1600-5368

## 1-(Hydroxyiminomethyl)-2-naphthol

Zhenghua Guo, Lianzhi Li,\* Guihua Liu and Jianfang Dong

School of Chemistry and Chemical Engineering, Liaocheng University, Liaocheng 252059, People's Republic of China

Correspondence e-mail: lilianzhi1963@yahoo.com.cn

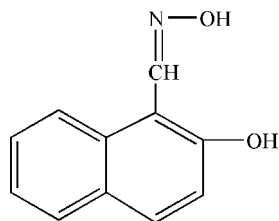
Received 16 November 2007; accepted 3 February 2008

Key indicators: single-crystal X-ray study;  $T = 298$  K; mean  $\sigma(\text{C}-\text{C}) = 0.004$  Å;  $R$  factor = 0.049;  $wR$  factor = 0.149; data-to-parameter ratio = 12.4.

The title compound,  $\text{C}_{11}\text{H}_9\text{NO}_2$ , was prepared by a condensation reaction of 2-hydroxy-1-naphthaldehyde with hydroxylammonium chloride in refluxing ethanol. An intramolecular  $\text{O}-\text{H}\cdots\text{N}$  hydrogen bond is observed. In the crystal structure, intermolecular  $\text{O}-\text{H}\cdots\text{O}$  and  $\text{C}-\text{H}\cdots\text{O}$  hydrogen-bond interactions result in a two-dimensional network.

## Related literature

For general background, see: Desai *et al.* (2001); Hodnett *et al.* (1970).



## Experimental

## Crystal data

$\text{C}_{11}\text{H}_9\text{NO}_2$   
 $M_r = 187.19$   
 Monoclinic,  $P2_1/c$   
 $a = 14.8382$  (19) Å

$b = 4.0462$  (7) Å  
 $c = 16.527$  (2) Å  
 $\beta = 114.933$  (2)°  
 $V = 899.8$  (2) Å<sup>3</sup>

$Z = 4$   
 Mo  $K\alpha$  radiation  
 $\mu = 0.10$  mm<sup>-1</sup>

$T = 298$  (2) K  
 $0.56 \times 0.45 \times 0.18$  mm

## Data collection

Bruker SMART 1K CCD diffractometer  
 Absorption correction: multi-scan (SADABS; Sheldrick, 1996)  
 $T_{\min} = 0.953$ ,  $T_{\max} = 0.984$

3977 measured reflections  
 1573 independent reflections  
 1009 reflections with  $I > 2\sigma(I)$   
 $R_{\text{int}} = 0.053$

## Refinement

$R[F^2 > 2\sigma(F^2)] = 0.049$   
 $wR(F^2) = 0.148$   
 $S = 1.04$   
 1573 reflections

127 parameters  
 H-atom parameters constrained  
 $\Delta\rho_{\max} = 0.19$  e Å<sup>-3</sup>  
 $\Delta\rho_{\min} = -0.20$  e Å<sup>-3</sup>

**Table 1**  
 Hydrogen-bond geometry (Å, °).

$D-\text{H}\cdots A$	$D-\text{H}$	$\text{H}\cdots A$	$D\cdots A$	$D-\text{H}\cdots A$
$\text{O}2-\text{H}2\cdots\text{N}1$	0.82	1.86	2.577 (2)	146
$\text{O}1-\text{H}1\cdots\text{O}2^{\text{i}}$	0.82	1.97	2.771 (2)	164
$\text{C}1-\text{H}1\text{A}\cdots\text{O}1^{\text{ii}}$	0.93	2.66	3.527 (3)	156
$\text{C}8-\text{H}8\cdots\text{O}1^{\text{ii}}$	0.93	2.62	3.474 (3)	153

Symmetry codes: (i)  $-x, y + \frac{1}{2}, -z + \frac{1}{2}$ ; (ii)  $-x, -y + 1, -z + 1$ .

Data collection: SMART (Siemens, 1996); cell refinement: SAINT (Siemens, 1996); data reduction: SAINT; program(s) used to solve structure: SHELXS97 (Sheldrick, 2008); program(s) used to refine structure: SHELXL97 (Sheldrick, 2008); molecular graphics: SHELXTL (Sheldrick, 2008); software used to prepare material for publication: SHELXTL.

The authors thank the Natural Science Foundation of Shandong Province (No. Y2004B02) for a research grant.

Supplementary data and figures for this paper are available from the IUCr electronic archives (Reference: FJ2080).

## References

- Desai, S. B., Desai, P. B. & Desai, K. R. (2001). *Heterocycle Commun.* **7**, 83–90.  
 Hodnett, E. M. & Mooney, P. D. (1970). *J. Med. Chem.* **13**, 786–788.  
 Sheldrick, G. M. (1996). SADABS. University of Göttingen, Germany.  
 Sheldrick, G. M. (2008). *Acta Cryst.* **A64**, 112–122.  
 Siemens (1996). SMART and SAINT. Siemens Analytical X-ray Instruments Inc., Madison, Wisconsin, USA.

## supporting information

*Acta Cryst.* (2008). E64, o568 [doi:10.1107/S160053680800370X]

## 1-(Hydroxyiminomethyl)-2-naphthol

Zhenghua Guo, Lianzhi Li, Guihua Liu and Jianfang Dong

### S1. Comment

Schiff bases have been intensively investigated owing to their strong coordination capability and diverse biological activities, such as antibacterial, antitumor activities (Desai *et al.*, 2001; Hodnett *et al.*, 1970). We report here the synthesis and crystal structure of a new Schiff base compound derived from the condensation of 2-hydroxy-1-naphthaldehyde and hydroxylammonium chloride.

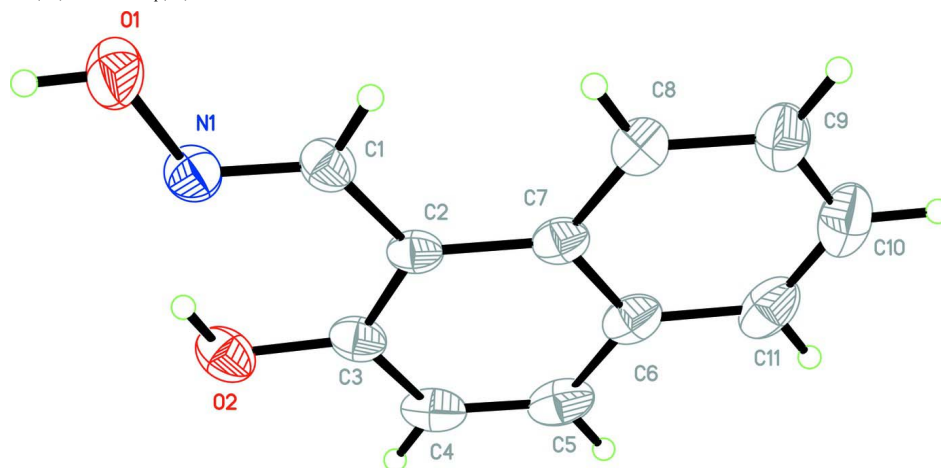
In the molecular structure (Scheme 1 and Fig. 1), all the atoms are almost in one plane, with the  $C?N = 1.266(3)$  Å. In the molecule, an intramolecular  $O2—H2\cdots N1$  hydrogen bond is observed (Table 1). The interactions of intermolecular hydrogen bond  $O1—H1\cdots O2$  form a one-dimensional chain-like structure (Fig. 2), which together with another two intermolecular H atoms  $C1—H1a\cdots O1$  and  $C8—H8\cdots O1$  (Table 1) result in the two-dimensional net-shaped structure.

### S2. Experimental

2-hydroxy-1-naphthaldehyde (1 mmol, 172.18 mg) in absolute ethanol (5 ml) was added dropwise to a absolute ethanol solution (10 ml) of hydroxylammonium chloride (1 mmol, 69.49 mg). The mixture was heated under reflux with stirring for 2 h and then filtered. The resulting solution was held at room temperature for 14 days, whereupon the colourless needle crystals of the title complex suitable for X-ray diffraction analysis were obtained.

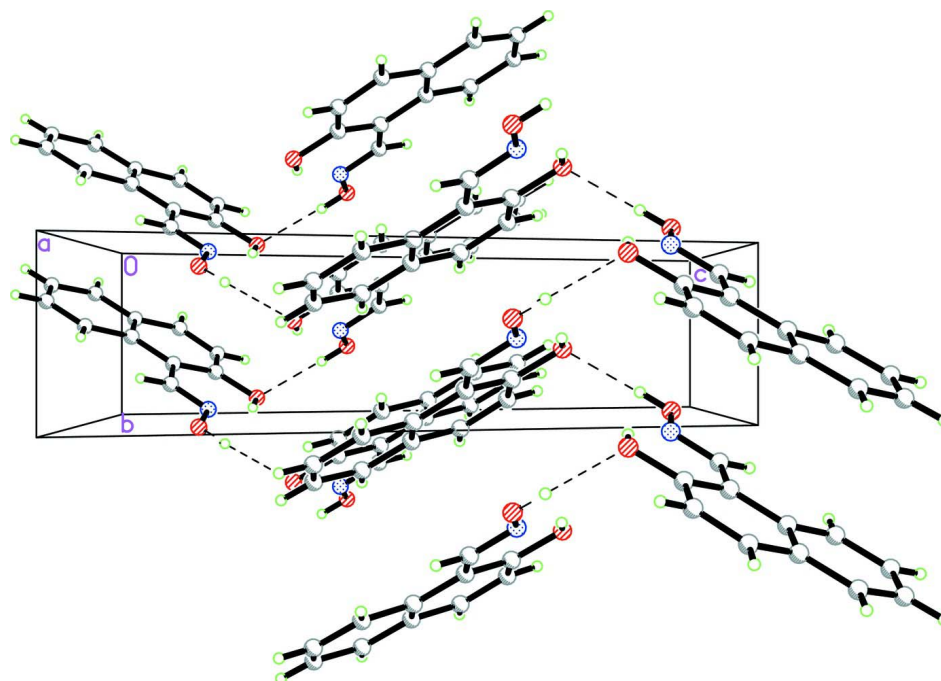
### S3. Refinement

All H-atoms were positioned geometrically and refined using a riding model, with  $C—H = 0.93$  Å (aromatic),  $0.82$  Å (hydroxyl) and  $U_{iso}(H) = 1.2U_{eq}(C)$ .



**Figure 1**

The structure of the title complex, showing 30% probability displacement ellipsoids and the atom-numbering scheme.

**Figure 2**

The crystal packing of the title complex, viewed approximately along the *a* axis.

### 1-(Hydroxyiminomethyl)-2-naphthol

#### Crystal data

$C_{11}H_9NO_2$

$M_r = 187.19$

Monoclinic,  $P2_1/c$

Hall symbol:  $-P\ 2_1/c$

$a = 14.8382\ (19)\ \text{\AA}$

$b = 4.0462\ (7)\ \text{\AA}$

$c = 16.527\ (2)\ \text{\AA}$

$\beta = 114.933\ (2)^\circ$

$V = 899.8\ (2)\ \text{\AA}^3$

$Z = 4$

$F(000) = 392$

$D_x = 1.382\ \text{Mg m}^{-3}$

Mo  $K\alpha$  radiation,  $\lambda = 0.71073\ \text{\AA}$

Cell parameters from 1237 reflections

$\theta = 2.5\text{--}27.0^\circ$

$\mu = 0.10\ \text{mm}^{-1}$

$T = 298\ \text{K}$

Block, yellow

$0.56 \times 0.45 \times 0.18\ \text{mm}$

#### Data collection

Bruker SMART 1K CCD

diffractometer

Radiation source: fine-focus sealed tube

Graphite monochromator

$\varphi$  and  $\omega$  scans

Absorption correction: multi-scan

(*SADABS*; Sheldrick, 1996)

$T_{\min} = 0.953$ ,  $T_{\max} = 0.984$

3977 measured reflections

1573 independent reflections

1009 reflections with  $I > 2\sigma(I)$

$R_{\text{int}} = 0.053$

$\theta_{\max} = 25.0^\circ$ ,  $\theta_{\min} = 2.5^\circ$

$h = -17 \rightarrow 15$

$k = -4 \rightarrow 4$

$l = -19 \rightarrow 19$

Refinement

Refinement on  $F^2$   
 Least-squares matrix: full  
 $R[F^2 > 2\sigma(F^2)] = 0.049$   
 $wR(F^2) = 0.149$   
 $S = 1.04$   
 1573 reflections  
 127 parameters  
 0 restraints  
 Primary atom site location: structure-invariant  
 direct methods

Secondary atom site location: difference Fourier  
 map  
 Hydrogen site location: inferred from  
 neighbouring sites  
 H-atom parameters constrained  
 $w = 1/[\sigma^2(F_o^2) + (0.0623P)^2 + 0.1603P]$   
 where  $P = (F_o^2 + 2F_c^2)/3$   
 $(\Delta/\sigma)_{\max} < 0.001$   
 $\Delta\rho_{\max} = 0.19 \text{ e } \text{\AA}^{-3}$   
 $\Delta\rho_{\min} = -0.20 \text{ e } \text{\AA}^{-3}$

Special details

**Geometry.** All e.s.d.'s (except the e.s.d. in the dihedral angle between two l.s. planes) are estimated using the full covariance matrix. The cell e.s.d.'s are taken into account individually in the estimation of e.s.d.'s in distances, angles and torsion angles; correlations between e.s.d.'s in cell parameters are only used when they are defined by crystal symmetry. An approximate (isotropic) treatment of cell e.s.d.'s is used for estimating e.s.d.'s involving l.s. planes.

**Refinement.** Refinement of  $F^2$  against ALL reflections. The weighted  $R$ -factor  $wR$  and goodness of fit  $S$  are based on  $F^2$ , conventional  $R$ -factors  $R$  are based on  $F$ , with  $F$  set to zero for negative  $F^2$ . The threshold expression of  $F^2 > \sigma(F^2)$  is used only for calculating  $R$ -factors(gt) *etc.* and is not relevant to the choice of reflections for refinement.  $R$ -factors based on  $F^2$  are statistically about twice as large as those based on  $F$ , and  $R$ -factors based on ALL data will be even larger.

Fractional atomic coordinates and isotropic or equivalent isotropic displacement parameters ( $\text{\AA}^2$ )

	$x$	$y$	$z$	$U_{\text{iso}}^*/U_{\text{eq}}$
N1	0.02725 (13)	0.4774 (6)	0.36227 (12)	0.0492 (6)
O1	-0.05788 (11)	0.5784 (5)	0.37113 (10)	0.0675 (6)
H1	-0.0944	0.6796	0.3262	0.101*
O2	0.14880 (11)	0.4181 (5)	0.28864 (9)	0.0576 (6)
H2	0.0978	0.4758	0.2925	0.086*
C1	0.08718 (16)	0.3186 (6)	0.42939 (14)	0.0450 (6)
H1A	0.0709	0.2805	0.4771	0.054*
C2	0.18092 (14)	0.1946 (6)	0.43332 (13)	0.0398 (6)
C3	0.20781 (15)	0.2491 (6)	0.36359 (14)	0.0447 (6)
C4	0.29816 (17)	0.1329 (7)	0.36695 (16)	0.0543 (7)
H4	0.3149	0.1746	0.3197	0.065*
C5	0.36087 (17)	-0.0385 (7)	0.43808 (18)	0.0574 (7)
H5	0.4197	-0.1189	0.4383	0.069*
C6	0.33969 (16)	-0.1004 (6)	0.51308 (16)	0.0498 (7)
C7	0.24800 (15)	0.0168 (6)	0.50985 (14)	0.0426 (6)
C8	0.22784 (17)	-0.0505 (7)	0.58514 (15)	0.0525 (7)
H8	0.1680	0.0189	0.5849	0.063*
C9	0.29445 (19)	-0.2143 (7)	0.65726 (17)	0.0627 (7)
H9	0.2795	-0.2534	0.7057	0.075*
C10	0.38420 (19)	-0.3245 (7)	0.66013 (19)	0.0707 (8)
H10	0.4294	-0.4333	0.7104	0.085*
C11	0.40583 (18)	-0.2721 (7)	0.58864 (19)	0.0634 (8)
H11	0.4653	-0.3514	0.5900	0.076*

Atomic displacement parameters ( $\text{\AA}^2$ )

	$U^{11}$	$U^{22}$	$U^{33}$	$U^{12}$	$U^{13}$	$U^{23}$
N1	0.0425 (10)	0.0617 (16)	0.0470 (11)	0.0002 (10)	0.0225 (9)	-0.0005 (10)
O1	0.0471 (9)	0.1046 (17)	0.0565 (10)	0.0234 (10)	0.0274 (8)	0.0178 (11)
O2	0.0556 (10)	0.0760 (14)	0.0459 (9)	-0.0074 (9)	0.0260 (8)	-0.0040 (9)
C1	0.0442 (13)	0.0525 (17)	0.0411 (11)	-0.0030 (12)	0.0207 (10)	-0.0005 (12)
C2	0.0390 (12)	0.0386 (15)	0.0440 (11)	-0.0084 (11)	0.0196 (10)	-0.0125 (11)
C3	0.0429 (12)	0.0469 (16)	0.0451 (12)	-0.0123 (12)	0.0195 (10)	-0.0131 (12)
C4	0.0516 (14)	0.060 (2)	0.0611 (15)	-0.0153 (13)	0.0333 (13)	-0.0238 (15)
C5	0.0419 (13)	0.0546 (19)	0.0820 (17)	-0.0088 (13)	0.0322 (13)	-0.0240 (16)
C6	0.0382 (12)	0.0392 (16)	0.0676 (15)	-0.0088 (11)	0.0180 (12)	-0.0152 (13)
C7	0.0398 (12)	0.0355 (15)	0.0515 (13)	-0.0087 (10)	0.0184 (10)	-0.0121 (12)
C8	0.0519 (14)	0.0489 (18)	0.0569 (14)	0.0029 (12)	0.0232 (12)	0.0007 (13)
C9	0.0660 (17)	0.054 (2)	0.0632 (15)	0.0036 (15)	0.0220 (14)	0.0115 (15)
C10	0.0581 (17)	0.054 (2)	0.0781 (18)	0.0009 (14)	0.0070 (15)	0.0103 (16)
C11	0.0430 (14)	0.0439 (18)	0.0911 (19)	0.0002 (13)	0.0165 (14)	-0.0073 (16)

Geometric parameters ( $\text{\AA}$ ,  $^\circ$ )

N1—C1	1.266 (3)	C5—C6	1.423 (3)
N1—O1	1.393 (2)	C5—H5	0.9300
O1—H1	0.8200	C6—C11	1.404 (3)
O2—C3	1.362 (3)	C6—C7	1.420 (3)
O2—H2	0.8200	C7—C8	1.423 (3)
C1—C2	1.454 (3)	C8—C9	1.358 (3)
C1—H1A	0.9300	C8—H8	0.9300
C2—C3	1.387 (3)	C9—C10	1.386 (3)
C2—C7	1.431 (3)	C9—H9	0.9300
C3—C4	1.399 (3)	C10—C11	1.365 (4)
C4—C5	1.344 (3)	C10—H10	0.9300
C4—H4	0.9300	C11—H11	0.9300
C1—N1—O1	112.96 (16)	C11—C6—C7	119.9 (2)
N1—O1—H1	109.5	C11—C6—C5	122.2 (2)
C3—O2—H2	109.5	C7—C6—C5	117.9 (2)
N1—C1—C2	121.31 (19)	C6—C7—C8	117.0 (2)
N1—C1—H1A	119.3	C6—C7—C2	119.96 (19)
C2—C1—H1A	119.3	C8—C7—C2	123.0 (2)
C3—C2—C7	118.56 (19)	C9—C8—C7	121.2 (2)
C3—C2—C1	120.9 (2)	C9—C8—H8	119.4
C7—C2—C1	120.59 (18)	C7—C8—H8	119.4
O2—C3—C2	122.40 (19)	C8—C9—C10	121.4 (2)
O2—C3—C4	116.27 (19)	C8—C9—H9	119.3
C2—C3—C4	121.3 (2)	C10—C9—H9	119.3
C5—C4—C3	120.4 (2)	C11—C10—C9	119.6 (3)
C5—C4—H4	119.8	C11—C10—H10	120.2
C3—C4—H4	119.8	C9—C10—H10	120.2

---

C4—C5—C6	121.8 (2)	C10—C11—C6	121.0 (2)
C4—C5—H5	119.1	C10—C11—H11	119.5
C6—C5—H5	119.1	C6—C11—H11	119.5

---

*Hydrogen-bond geometry (Å, °)*

---

<i>D</i> —H $\cdots$ <i>A</i>	<i>D</i> —H	H $\cdots$ <i>A</i>	<i>D</i> $\cdots$ <i>A</i>	<i>D</i> —H $\cdots$ <i>A</i>
O2—H2 $\cdots$ N1	0.82	1.86	2.577 (2)	146
O1—H1 $\cdots$ O2 <sup>i</sup>	0.82	1.97	2.771 (2)	164
C1—H1A $\cdots$ O1 <sup>ii</sup>	0.93	2.66	3.527 (3)	156
C8—H8 $\cdots$ O1 <sup>ii</sup>	0.93	2.62	3.474 (3)	153

---

Symmetry codes: (i)  $-x, y+1/2, -z+1/2$ ; (ii)  $-x, -y+1, -z+1$ .