

Acta Crystallographica Section E

Structure Reports

Online

ISSN 1600-5368

2,5,7-Trimethyl-3-phenylsulfonyl-1-benzofuran

Hong Dae Choi,^a Pil Ja Seo,^a Byeng Wha Son^b and Uk Lee^{b*}

^aDepartment of Chemistry, Donggeui University, San 24 Kaya-dong, Busanjin-gu, Busan 614-714, Republic of Korea, and ^bDepartment of Chemistry, Pukyong National University, 599-1 Daeyeon 3-dong, Nam-gu, Busan 608-737, Republic of Korea

Correspondence e-mail: uklee@pknu.ac.kr

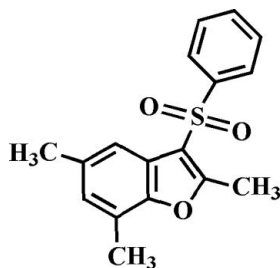
Received 21 March 2008; accepted 29 March 2008

Key indicators: single-crystal X-ray study; $T = 173$ K; mean $\sigma(\text{C}-\text{C}) = 0.003$ Å; R factor = 0.037; wR factor = 0.104; data-to-parameter ratio = 16.6.

The title compound, $\text{C}_{17}\text{H}_{16}\text{O}_3\text{S}$, was prepared by the oxidation of 2,5,7-trimethyl-3-phenylsulfanyl-1-benzofuran with 3-chloroperoxybenzoic acid. The phenyl ring exhibits a dihedral angle of $81.16(4)^\circ$ with the plane of the benzofuran fragment. The crystal structure is stabilized by $\pi-\pi$ interactions between the furan and benzene rings of neighbouring molecules [centroid-centroid distance = $3.874(2)$ Å] and by $\text{C}-\text{H}\cdots\pi$ interactions between a phenyl H atom of the phenylsulfonyl substituent and the furan ring of adjacent molecules. In addition, the crystal structure exhibits intra- and intermolecular $\text{C}-\text{H}\cdots\text{O}$ interactions.

Related literature

For the crystal structures of similar substituted benzofuran compounds, see: Choi *et al.* (2007a,b).



Experimental

Crystal data

$\text{C}_{17}\text{H}_{16}\text{O}_3\text{S}$
 $M_r = 300.36$
 Monoclinic, $P2_1/n$
 $a = 9.2468(7)$ Å
 $b = 8.4238(7)$ Å
 $c = 18.963(2)$ Å
 $\beta = 91.535(2)^\circ$
 $V = 1476.6(2)$ Å³
 $Z = 4$
 Mo $K\alpha$ radiation
 $\mu = 0.23$ mm⁻¹
 $T = 173(2)$ K
 $0.40 \times 0.40 \times 0.10$ mm

Data collection

Bruker SMART CCD diffractometer
 Absorption correction: none
 8704 measured reflections
 3212 independent reflections
 2544 reflections with $I > 2\sigma(I)$
 $R_{\text{int}} = 0.041$

Refinement

$R[F^2 > 2\sigma(F^2)] = 0.037$
 $wR(F^2) = 0.104$
 $S = 1.03$
 3212 reflections
 193 parameters
 H-atom parameters constrained
 $\Delta\rho_{\text{max}} = 0.30$ e Å⁻³
 $\Delta\rho_{\text{min}} = -0.38$ e Å⁻³

Table 1

Hydrogen-bond geometry (Å, °).

$D-\text{H}\cdots A$	$D-\text{H}$	$\text{H}\cdots A$	$D\cdots A$	$D-\text{H}\cdots A$
$\text{C}12-\text{H}12\cdots\text{Cg}1^i$	0.95	2.81	3.747 (3)	169
$\text{C}16-\text{H}16\text{C}\cdots\text{O}3^{\text{ii}}$	0.98	2.48	3.403 (2)	158
$\text{C}17-\text{H}17\text{A}\cdots\text{O}2$	0.98	2.42	3.135 (3)	129

Symmetry codes: (i) $-x + 1, -y + 2, -z$; (ii) $-x + 2, -y + 1, -z$. $\text{Cg}1$ is the centroid of the $\text{O}1/\text{C}8/\text{C}1/\text{C}2/\text{C}7$ furan ring.

Data collection: SMART (Bruker, 2001); cell refinement: SAINT (Bruker, 2001); data reduction: SAINT; program(s) used to solve structure: SHELXS97 (Sheldrick, 2008); program(s) used to refine structure: SHELXL97 (Sheldrick, 2008); molecular graphics: ORTEP-3 (Farrugia, 1997) and DIAMOND (Brandenburg, 1998); software used to prepare material for publication: SHELXL97.

Supplementary data and figures for this paper are available from the IUCr electronic archives (Reference: ZL2106).

References

- Brandenburg, K. (1998). DIAMOND. Crystal Impact GbR, Bonn, Germany.
 Bruker (2001). SAINT and SMART. Bruker AXS Inc., Madison, Wisconsin, USA.
 Choi, H. D., Seo, P. J., Son, B. W. & Lee, U. (2007a). Acta Cryst. E63, o1823–o1824.
 Choi, H. D., Seo, P. J., Son, B. W. & Lee, U. (2007b). Acta Cryst. E63, o4042.
 Farrugia, L. J. (1997). J. Appl. Cryst. 30, 565.
 Sheldrick, G. M. (2008). Acta Cryst. A64, 112–122.

supporting information

Acta Cryst. (2008). E64, o794 [doi:10.1107/S1600536808008477]

2,5,7-Trimethyl-3-phenylsulfonyl-1-benzofuran

Hong Dae Choi, Pil Ja Seo, Byeng Wha Son and Uk Lee

S1. Comment

This work is related to earlier communications on the synthesis and structure of substituted benzofuran analogues, *viz.* 2,5-dimethyl-3-methylsulfinyl-1-benzofuran (Choi *et al.*, 2007*a*) and 2,5-dimethyl-3-phenylsulfinyl-1-benzofuran (Choi *et al.*, 2007*b*). Herein we report the molecular and crystal structure of the title compound, 2,5,7-trimethyl-3-phenylsulfonyl-1-benzofuran (Fig. 1).

The benzofuran unit is almost planar, with a mean deviation of 0.009 Å from the least-squares plane defined by the nine constituent atoms. The phenyl ring (C9—C14) is almost perpendicular to the plane of the benzofuran ring system [81.16 (4) °] and is tilted slightly towards it. The crystal packing (Fig. 2) is stabilized by aromatic π — π stacking interactions between the furan and the benzene rings from neighbouring molecules. The Cg1...Cg2ⁱⁱ distance is 3.874 (2) Å (Cg1 and Cg2 are the centroids of the O1/C8/C1/C2/C7 furan ring and the C2—C7 benzene ring, respectively, symmetry code as in Fig. 2). The molecular packing is further stabilized by C—H... π interactions between a phenyl H atom of the phenylsulfonyl substituent and the furan ring of the benzofuran unit, with a C12—H12...Cgⁱ separation of 2.81 Å (Fig. 2 and Table 1; Cgⁱ is the centroid of the O1/C8/C1/C2/C7 furan ring, symmetry code as in Fig. 2). Additionally, intra- and intermolecular C—H...O interactions in the structure were observed (Fig. 2 and Table 1; symmetry code as in Fig. 2).

S2. Experimental

3-Chloroperoxybenzoic acid (77%, 471 mg, 2.1 mmol) was added in small portions to a stirred solution of 2,5,7-trimethyl-3-phenylsulfonyl-1-benzofuran (268 mg, 1.0 mmol) in dichloromethane (30 ml) at 273 K. After being stirred for 4 h at room temperature, the mixture was washed with saturated sodium bicarbonate solution and the organic layer was separated, dried over magnesium sulfate, filtered and concentrated in vacuum. The residue was purified by column chromatography (hexane-ethyl acetate, 2:1 *v/v*) to afford the title compound as a colorless solid [yield 81%, m.p. 399–400 K; R_f = 0.61 (hexane-ethyl acetate, 2:1 *v/v*)]. Single crystals suitable for X-ray diffraction were prepared by evaporation of a solution of the title compound in benzene at room temperature. Spectroscopic analysis: ¹H NMR (CDCl₃, 400 MHz) δ 2.41 (s, 6H), 2.80 (s, 3H), 6.92 (s, 1H), 7.47–7.52 (m, 4H), 8.01 (d, J = 7.68 Hz, 2H); EI—MS 300 [M^+].

S3. Refinement

All H atoms were positioned geometrically and refined using a riding model, with C—H = 0.95 Å for aromatic H atoms, 0.99 Å for methylene H atoms and 0.98 Å for methyl H atoms, respectively, and with $U_{iso}(H) = 1.2U_{eq}(C)$ for aromatic and methylene, $U_{iso}(H) = 1.5U_{eq}(C)$ for H atoms for methyl H atoms.

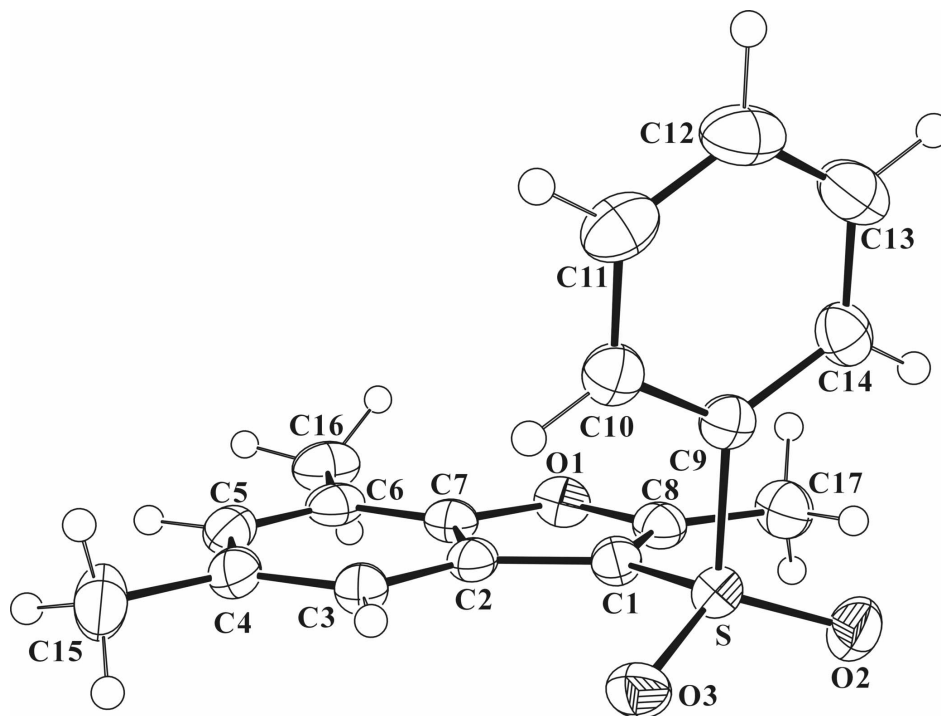


Figure 1

The molecular structure of the title compound, showing displacement ellipsoids drawn at the 50% probability level.

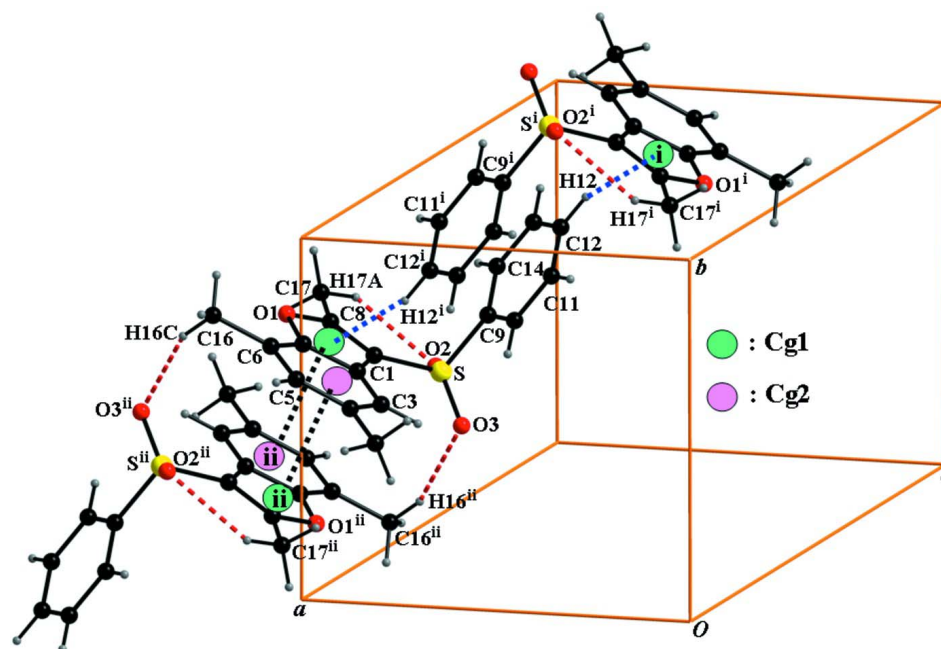


Figure 2

π – π , C–H \cdots π and C–H \cdots O interactions (dotted lines) in the title compound. Cg denotes the ring centroid. [Symmetry code: (i) $-x + 1, -y + 2, -z$; (ii) $-x + 2, -y + 1, -z$.]

2,5,7-Trimethyl-3-phenylsulfonyl-1-benzofuran

Crystal data

C₁₇H₁₆O₃S $M_r = 300.36$ Monoclinic, $P2_1/n$

Hall symbol: -p 2yn

 $a = 9.2468$ (7) Å $b = 8.4238$ (7) Å $c = 18.963$ (2) Å $\beta = 91.535$ (2)° $V = 1476.6$ (2) Å³ $Z = 4$ $F(000) = 632$ $D_x = 1.351$ Mg m⁻³Mo $K\alpha$ radiation, $\lambda = 0.71073$ Å

Cell parameters from 4291 reflections

 $\theta = 2.5$ – 28.3 ° $\mu = 0.23$ mm⁻¹ $T = 173$ K

Block, colorless

 $0.40 \times 0.40 \times 0.10$ mm

Data collection

Bruker SMART CCD

diffractometer

Radiation source: fine-focus sealed tube

Graphite monochromator

Detector resolution: 10.0 pixels mm⁻¹ φ and ω scans

8704 measured reflections

3212 independent reflections

2544 reflections with $I > 2\sigma(I)$ $R_{\text{int}} = 0.041$ $\theta_{\text{max}} = 27.0$ °, $\theta_{\text{min}} = 2.5$ ° $h = -11$ → 11 $k = -7$ → 10 $l = -24$ → 23

Refinement

Refinement on F^2

Least-squares matrix: full

 $R[F^2 > 2\sigma(F^2)] = 0.037$ $wR(F^2) = 0.104$ $S = 1.04$

3212 reflections

193 parameters

0 restraints

Primary atom site location: structure-invariant

direct methods

Secondary atom site location: difference Fourier map

Hydrogen site location: difference Fourier map

H-atom parameters constrained

 $w = 1/[\sigma^2(F_o^2) + (0.0467P)^2 + 0.6422P]$ where $P = (F_o^2 + 2F_c^2)/3$ $(\Delta/\sigma)_{\text{max}} < 0.001$ $\Delta\rho_{\text{max}} = 0.30$ e Å⁻³ $\Delta\rho_{\text{min}} = -0.38$ e Å⁻³

Special details

Geometry. All e.s.d.'s (except the e.s.d. in the dihedral angle between two l.s. planes) are estimated using the full covariance matrix. The cell e.s.d.'s are taken into account individually in the estimation of e.s.d.'s in distances, angles and torsion angles; correlations between e.s.d.'s in cell parameters are only used when they are defined by crystal symmetry. An approximate (isotropic) treatment of cell e.s.d.'s is used for estimating e.s.d.'s involving l.s. planes.

Refinement. Refinement of F^2 against ALL reflections. The weighted R -factor wR and goodness of fit S are based on F^2 , conventional R -factors R are based on F , with F set to zero for negative F^2 . The threshold expression of $F^2 > \sigma(F^2)$ is used only for calculating R -factors(gt) *etc.* and is not relevant to the choice of reflections for refinement. R -factors based on F^2 are statistically about twice as large as those based on F , and R -factors based on ALL data will be even larger.

Fractional atomic coordinates and isotropic or equivalent isotropic displacement parameters (Å²)

	x	y	z	$U_{\text{iso}}^*/U_{\text{eq}}$
S	0.71396 (5)	0.59940 (5)	0.11202 (2)	0.02746 (13)
O1	1.04792 (13)	0.77976 (15)	0.01610 (7)	0.0331 (3)
O2	0.77401 (15)	0.57958 (16)	0.18201 (6)	0.0386 (3)
O3	0.63915 (14)	0.46890 (14)	0.07823 (7)	0.0346 (3)
C1	0.84920 (18)	0.6601 (2)	0.05599 (9)	0.0270 (4)

C2	0.84265 (18)	0.6499 (2)	-0.02041 (9)	0.0260 (4)
C3	0.74772 (19)	0.5861 (2)	-0.07118 (9)	0.0290 (4)
H3	0.6625	0.5321	-0.0579	0.035*
C4	0.7809 (2)	0.6035 (2)	-0.14184 (9)	0.0330 (4)
C5	0.9071 (2)	0.6844 (2)	-0.16049 (10)	0.0346 (4)
H5	0.9266	0.6957	-0.2092	0.042*
C6	1.00483 (19)	0.7488 (2)	-0.11156 (10)	0.0328 (4)
C7	0.96763 (19)	0.7270 (2)	-0.04190 (9)	0.0291 (4)
C8	0.97377 (19)	0.7376 (2)	0.07465 (9)	0.0304 (4)
C9	0.59363 (18)	0.7624 (2)	0.11293 (9)	0.0263 (4)
C10	0.48964 (19)	0.7768 (2)	0.05910 (9)	0.0318 (4)
H10	0.4830	0.7005	0.0223	0.038*
C11	0.3956 (2)	0.9051 (2)	0.06032 (11)	0.0402 (5)
H11	0.3232	0.9165	0.0242	0.048*
C12	0.4063 (2)	1.0159 (2)	0.11345 (12)	0.0450 (5)
H12	0.3416	1.1035	0.1137	0.054*
C13	0.5111 (2)	1.0004 (2)	0.16670 (11)	0.0428 (5)
H13	0.5180	1.0776	0.2032	0.051*
C14	0.6058 (2)	0.8729 (2)	0.16692 (10)	0.0329 (4)
H14	0.6777	0.8615	0.2033	0.040*
C15	0.6791 (2)	0.5378 (3)	-0.19827 (10)	0.0461 (5)
H15A	0.6497	0.4301	-0.1853	0.069*
H15B	0.7282	0.5348	-0.2434	0.069*
H15C	0.5934	0.6058	-0.2027	0.069*
C16	1.1407 (2)	0.8345 (2)	-0.13129 (12)	0.0438 (5)
H16A	1.1486	0.9339	-0.1046	0.066*
H16B	1.1370	0.8581	-0.1819	0.066*
H16C	1.2249	0.7675	-0.1202	0.066*
C17	1.0431 (2)	0.7849 (2)	0.14286 (10)	0.0398 (5)
H17A	0.9787	0.7586	0.1814	0.060*
H17B	1.0614	0.8994	0.1427	0.060*
H17C	1.1348	0.7278	0.1495	0.060*

Atomic displacement parameters (Å²)

	U^{11}	U^{22}	U^{33}	U^{12}	U^{13}	U^{23}
S	0.0317 (2)	0.0259 (2)	0.0248 (2)	0.00101 (17)	0.00055 (16)	0.00232 (17)
O1	0.0278 (6)	0.0313 (7)	0.0401 (7)	-0.0011 (5)	0.0010 (5)	-0.0019 (6)
O2	0.0440 (8)	0.0429 (8)	0.0287 (7)	0.0047 (6)	-0.0027 (6)	0.0058 (6)
O3	0.0403 (7)	0.0252 (6)	0.0383 (7)	-0.0040 (5)	0.0022 (6)	-0.0008 (5)
C1	0.0264 (8)	0.0274 (9)	0.0273 (8)	0.0029 (7)	-0.0003 (6)	-0.0001 (7)
C2	0.0276 (8)	0.0229 (8)	0.0276 (8)	0.0051 (7)	0.0019 (6)	0.0015 (7)
C3	0.0301 (9)	0.0280 (9)	0.0289 (9)	0.0026 (7)	0.0005 (7)	0.0000 (7)
C4	0.0383 (10)	0.0317 (9)	0.0289 (9)	0.0091 (8)	-0.0003 (7)	0.0010 (8)
C5	0.0430 (10)	0.0332 (10)	0.0281 (9)	0.0124 (8)	0.0082 (8)	0.0045 (8)
C6	0.0334 (10)	0.0260 (9)	0.0395 (10)	0.0081 (7)	0.0098 (8)	0.0050 (8)
C7	0.0287 (8)	0.0238 (8)	0.0348 (9)	0.0043 (7)	0.0007 (7)	-0.0003 (7)
C8	0.0294 (9)	0.0274 (9)	0.0343 (9)	0.0047 (7)	-0.0008 (7)	-0.0013 (7)

C9	0.0253 (8)	0.0252 (8)	0.0286 (8)	-0.0030 (7)	0.0045 (7)	0.0023 (7)
C10	0.0320 (9)	0.0308 (9)	0.0324 (9)	-0.0035 (7)	0.0006 (7)	0.0012 (8)
C11	0.0303 (10)	0.0424 (11)	0.0480 (12)	0.0021 (8)	0.0011 (8)	0.0113 (9)
C12	0.0404 (11)	0.0350 (11)	0.0605 (13)	0.0097 (9)	0.0177 (10)	0.0049 (10)
C13	0.0488 (12)	0.0338 (10)	0.0465 (12)	0.0003 (9)	0.0147 (9)	-0.0076 (9)
C14	0.0339 (9)	0.0345 (10)	0.0307 (9)	-0.0040 (8)	0.0066 (7)	-0.0033 (8)
C15	0.0492 (12)	0.0601 (14)	0.0285 (10)	0.0059 (11)	-0.0055 (8)	-0.0026 (9)
C16	0.0401 (11)	0.0361 (11)	0.0561 (13)	0.0031 (9)	0.0161 (10)	0.0097 (9)
C17	0.0359 (10)	0.0416 (11)	0.0413 (11)	0.0006 (9)	-0.0096 (8)	-0.0055 (9)

Geometric parameters (Å, °)

S—O2	1.4346 (13)	C9—C10	1.389 (2)
S—O3	1.4401 (13)	C10—C11	1.388 (3)
S—C1	1.7394 (17)	C10—H10	0.9500
S—C9	1.7674 (17)	C11—C12	1.375 (3)
O1—C8	1.367 (2)	C11—H11	0.9500
O1—C7	1.384 (2)	C12—C13	1.387 (3)
C1—C8	1.363 (2)	C12—H12	0.9500
C1—C2	1.451 (2)	C13—C14	1.386 (3)
C2—C3	1.393 (2)	C13—H13	0.9500
C2—C7	1.396 (2)	C14—H14	0.9500
C3—C4	1.390 (2)	C15—H15A	0.9800
C3—H3	0.9500	C15—H15B	0.9800
C4—C5	1.405 (3)	C15—H15C	0.9800
C4—C15	1.511 (3)	C16—H16A	0.9800
C5—C6	1.388 (3)	C16—H16B	0.9800
C5—H5	0.9500	C16—H16C	0.9800
C6—C7	1.386 (2)	C17—H17A	0.9800
C6—C16	1.505 (3)	C17—H17B	0.9800
C8—C17	1.483 (2)	C17—H17C	0.9800
C9—C14	1.386 (2)		
O2—S—O3	119.48 (8)	C11—C10—C9	118.54 (17)
O2—S—C1	109.43 (8)	C11—C10—H10	120.7
O3—S—C1	107.29 (8)	C9—C10—H10	120.7
O2—S—C9	108.03 (8)	C12—C11—C10	120.53 (19)
O3—S—C9	107.59 (8)	C12—C11—H11	119.7
C1—S—C9	103.94 (8)	C10—C11—H11	119.7
C8—O1—C7	106.96 (13)	C11—C12—C13	120.35 (19)
C8—C1—C2	107.46 (15)	C11—C12—H12	119.8
C8—C1—S	126.78 (14)	C13—C12—H12	119.8
C2—C1—S	125.53 (13)	C14—C13—C12	120.26 (19)
C3—C2—C7	119.27 (16)	C14—C13—H13	119.9
C3—C2—C1	136.18 (16)	C12—C13—H13	119.9
C7—C2—C1	104.55 (15)	C13—C14—C9	118.66 (18)
C4—C3—C2	118.31 (17)	C13—C14—H14	120.7
C4—C3—H3	120.8	C9—C14—H14	120.7

C2—C3—H3	120.8	C4—C15—H15A	109.5
C3—C4—C5	119.98 (17)	C4—C15—H15B	109.5
C3—C4—C15	119.65 (18)	H15A—C15—H15B	109.5
C5—C4—C15	120.36 (17)	C4—C15—H15C	109.5
C6—C5—C4	123.47 (17)	H15A—C15—H15C	109.5
C6—C5—H5	118.3	H15B—C15—H15C	109.5
C4—C5—H5	118.3	C6—C16—H16A	109.5
C7—C6—C5	114.32 (17)	C6—C16—H16B	109.5
C7—C6—C16	122.04 (18)	H16A—C16—H16B	109.5
C5—C6—C16	123.64 (17)	C6—C16—H16C	109.5
O1—C7—C6	124.99 (16)	H16A—C16—H16C	109.5
O1—C7—C2	110.38 (15)	H16B—C16—H16C	109.5
C6—C7—C2	124.63 (17)	C8—C17—H17A	109.5
C1—C8—O1	110.64 (15)	C8—C17—H17B	109.5
C1—C8—C17	134.26 (17)	H17A—C17—H17B	109.5
O1—C8—C17	115.10 (15)	C8—C17—H17C	109.5
C14—C9—C10	121.66 (17)	H17A—C17—H17C	109.5
C14—C9—S	119.35 (14)	H17B—C17—H17C	109.5
C10—C9—S	118.98 (13)		
O2—S—C1—C8	-24.52 (19)	C3—C2—C7—O1	-179.24 (14)
O3—S—C1—C8	-155.54 (16)	C1—C2—C7—O1	0.79 (18)
C9—S—C1—C8	90.68 (17)	C3—C2—C7—C6	1.4 (3)
O2—S—C1—C2	161.63 (14)	C1—C2—C7—C6	-178.60 (16)
O3—S—C1—C2	30.61 (17)	C2—C1—C8—O1	0.6 (2)
C9—S—C1—C2	-83.18 (16)	S—C1—C8—O1	-174.20 (12)
C8—C1—C2—C3	179.23 (19)	C2—C1—C8—C17	-179.81 (19)
S—C1—C2—C3	-5.9 (3)	S—C1—C8—C17	5.4 (3)
C8—C1—C2—C7	-0.81 (19)	C7—O1—C8—C1	-0.07 (19)
S—C1—C2—C7	174.03 (13)	C7—O1—C8—C17	-179.78 (15)
C7—C2—C3—C4	-0.7 (2)	O2—S—C9—C14	20.07 (16)
C1—C2—C3—C4	179.30 (18)	O3—S—C9—C14	150.32 (14)
C2—C3—C4—C5	-0.3 (3)	C1—S—C9—C14	-96.11 (15)
C2—C3—C4—C15	-179.10 (17)	O2—S—C9—C10	-160.35 (13)
C3—C4—C5—C6	0.8 (3)	O3—S—C9—C10	-30.10 (15)
C15—C4—C5—C6	179.52 (17)	C1—S—C9—C10	83.47 (15)
C4—C5—C6—C7	-0.1 (3)	C14—C9—C10—C11	-0.5 (3)
C4—C5—C6—C16	179.55 (17)	S—C9—C10—C11	179.95 (13)
C8—O1—C7—C6	178.91 (16)	C9—C10—C11—C12	0.5 (3)
C8—O1—C7—C2	-0.48 (18)	C10—C11—C12—C13	-0.2 (3)
C5—C6—C7—O1	179.76 (15)	C11—C12—C13—C14	-0.1 (3)
C16—C6—C7—O1	0.1 (3)	C12—C13—C14—C9	0.2 (3)
C5—C6—C7—C2	-0.9 (3)	C10—C9—C14—C13	0.1 (3)
C16—C6—C7—C2	179.37 (16)	S—C9—C14—C13	179.70 (14)

Hydrogen-bond geometry (Å, °)

<i>D</i> —H··· <i>A</i>	<i>D</i> —H	H··· <i>A</i>	<i>D</i> ··· <i>A</i>	<i>D</i> —H··· <i>A</i>
C12—H12···Cg1 ⁱ	0.95	2.81	3.747 (3)	169
C16—H16C···O3 ⁱⁱ	0.98	2.48	3.403 (2)	158
C17—H17A···O2	0.98	2.42	3.135 (3)	129

Symmetry codes: (i) $-x+1, -y+2, -z$; (ii) $-x+2, -y+1, -z$.