

Acta Crystallographica Section E

Structure Reports

Online

ISSN 1600-5368

1-Acetyl-3-(4-chlorophenyl)-5-(4-fluorophenyl)-2-pyrazoline

 Jian Li,^{a*} Huai-Fen Xiao^b and Jie Yang^a
^aDepartment of Educational Science and Technology, Weifang University, Weifang 261061, People's Republic of China, and ^bExperimental Junior Middle School of Changle County, Weifang 261061, People's Republic of China

Correspondence e-mail: lijiansdwf@163.com

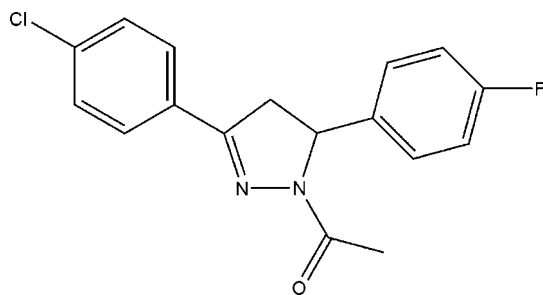
Received 18 May 2008; accepted 17 June 2008

 Key indicators: single-crystal X-ray study; $T = 273$ K; mean $\sigma(\text{C}-\text{C}) = 0.003$ Å; R factor = 0.037; wR factor = 0.099; data-to-parameter ratio = 13.4.

In the title molecule, $\text{C}_{17}\text{H}_{14}\text{ClFN}_2\text{O}$, the mean plane of the pyrazoline ring makes dihedral angles of 18.19 (1) and 83.51 (4)° with the 4-chlorobenzene and 4-fluorobenzene rings, respectively. The two benzene rings make a dihedral angle of 76.11 (2)°. Weak intermolecular $\text{C}-\text{H}\cdots\text{O}$ hydrogen bonds help stabilize the crystal structure.

Related literature

For related literature, see: Dhal *et al.* (1975); Fahrni *et al.* (2003); Kimura *et al.* (1977); Lombardino & Ottemes (1981); Manna *et al.* (2002); Rawal *et al.* (1963).



Experimental

Crystal data

 $\text{C}_{17}\text{H}_{14}\text{ClFN}_2\text{O}$
 $M_r = 316.75$

 Monoclinic, $P2_1/c$
 $a = 14.5425$ (19) Å

 $b = 11.3580$ (14) Å
 $c = 9.6494$ (13) Å
 $\beta = 108.154$ (2)°
 $V = 1514.5$ (3) Å³
 $Z = 4$

 Mo $K\alpha$ radiation
 $\mu = 0.27$ mm⁻¹
 $T = 273$ (2) K
 $0.14 \times 0.12 \times 0.06$ mm

Data collection

 Bruker SMART CCD area-detector diffractometer
 Absorption correction: none
 7793 measured reflections

 2676 independent reflections
 2077 reflections with $I > 2\sigma(I)$
 $R_{\text{int}} = 0.021$

Refinement

 $R[F^2 > 2\sigma(F^2)] = 0.037$
 $wR(F^2) = 0.098$
 $S = 1.03$
 2676 reflections

 200 parameters
 H-atom parameters constrained
 $\Delta\rho_{\text{max}} = 0.20$ e Å⁻³
 $\Delta\rho_{\text{min}} = -0.21$ e Å⁻³

Table 1

Hydrogen-bond geometry (Å, °).

$D-H\cdots A$	$D-H$	$H\cdots A$	$D\cdots A$	$D-H\cdots A$
$\text{C4}-\text{H4B}\cdots\text{O1}^i$	0.97	2.57	3.425 (2)	147

 Symmetry code: (i) $-x + 2, y + \frac{1}{2}, -z + \frac{3}{2}$.

Data collection: *SMART* (Bruker, 1997); cell refinement: *SAINTE* (Bruker, 1997); data reduction: *SAINTE*; program(s) used to solve structure: *SHELXS97* (Sheldrick, 2008); program(s) used to refine structure: *SHELXL97* (Sheldrick, 2008); molecular graphics: *SHELXTL* (Sheldrick, 2008); software used to prepare material for publication: *SHELXTL*.

The authors thank the Sparking Plan of Shandong Province (grant No. 200674006017) and the National Sparking Plan Project (grant No. 2007E740083).

Supplementary data and figures for this paper are available from the IUCr electronic archives (Reference: AT2570).

References

- Bruker (1997). *SMART* and *SAINTE*. Bruker AXS Inc., Madison, Wisconsin, USA.
- Dhal, P. N., Acharya, T. E. & Nayak, A. (1975). *J. Indian Chem. Soc.* **52**, 1196–1200.
- Fahrni, C. J., Yang, L. C. & VanDerveer, D. G. (2003). *J. Am. Chem. Soc.* **125**, 3799–3812.
- Kimura, T., Kai, Y., Yasuoka, N. & Kasai, N. (1977). *Acta Cryst.* **B33**, 1786–1792.
- Lombardino, G. & Ottemes, I. G. (1981). *J. Med. Chem.* **24**, 830–834.
- Manna, F., Chimenti, F., Bolasco, A., Secci, D., Bizzarri, B., Befani, O., Turini, P., Mondovi, B., Alcaro, S. & Tafi, A. (2002). *Bioorg. Med. Chem. Lett.* **12**, 3629–3635.
- Rawal, A. A., Thakor, V. M. & Shah, N. M. (1963). *J. Indian Chem. Soc.* **40**, 323–326.
- Sheldrick, G. M. (2008). *Acta Cryst.* **A64**, 112–122.

supporting information

Acta Cryst. (2008). E64, o1391 [doi:10.1107/S1600536808018333]

1-Acetyl-3-(4-chlorophenyl)-5-(4-fluorophenyl)-2-pyrazoline

Jian Li, Huai-Fen Xiao and Jie Yang

S1. Comment

Pyrazoline and some of its derivatives demonstrate antiviral (Rawal *et al.*, 1963), antifungal (Dhal *et al.*, 1975), and immunosuppressive (Lombardino & Ottemes, 1981) activities. 1-Acetyl-3,5-diaryl-2-pyrazolines have been found to inhibit monoamine oxidases (Manna *et al.*, 2002). As part of our ongoing investigation of pyrazolines and their metal complexes, we report here the crystal structure of the title compound (I).

In (I) (Fig. 1), all bond lengths and angles are normal (Fahrni *et al.*, 2003; Kimura *et al.*, 1977). The mean plane of pyrazoline ring makes dihedral angles of 18.19 (1)° and 83.51 (4)° with 4-chlorobenzene ring and 4-fluorobenzene ring, respectively. The dihedral angle between the two benzene rings is 76.11 (2)°. Weak intermolecular C—H···O hydrogen bonds help stabilize the crystal structure (Table 1). The crystal packing of (I) is shown in Fig. 2.

S2. Experimental

1-(4-chlorophenyl)-3-(4-fluorophenyl)-2-propenyl-1-one (0.02 mol) and hydrazine (0.02 mol) were mixed in 99.5% acetic acid (40 ml) and stirred in refluxing for 6 h, then the mixture was poured into ice-water to afford colourless solids. The solids were filtrated and washed with water until the pH of solution is about to 7.0. Finally, the solid crystals were dry under room temperature. Single crystals of the title compound suitable for X-ray measurements were obtained by recrystallization from EtOH at room temperature.

S3. Refinement

H atoms were fixed geometrically and allowed to ride on their parent atoms, with C—H distances of 0.93–0.976 Å, and with $U_{\text{iso}}=1.2-1.5U_{\text{eq}}$ of the parent atoms.

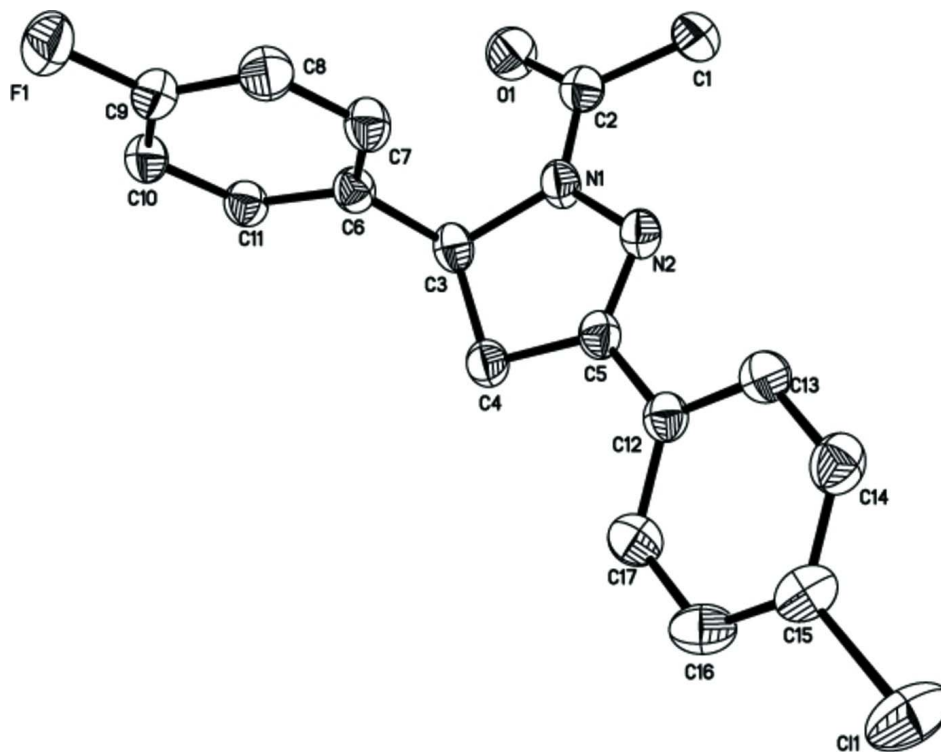


Figure 1

The molecular structure and atom-labeling scheme for (I), with displacement ellipsoids drawn at the 30% probability level.

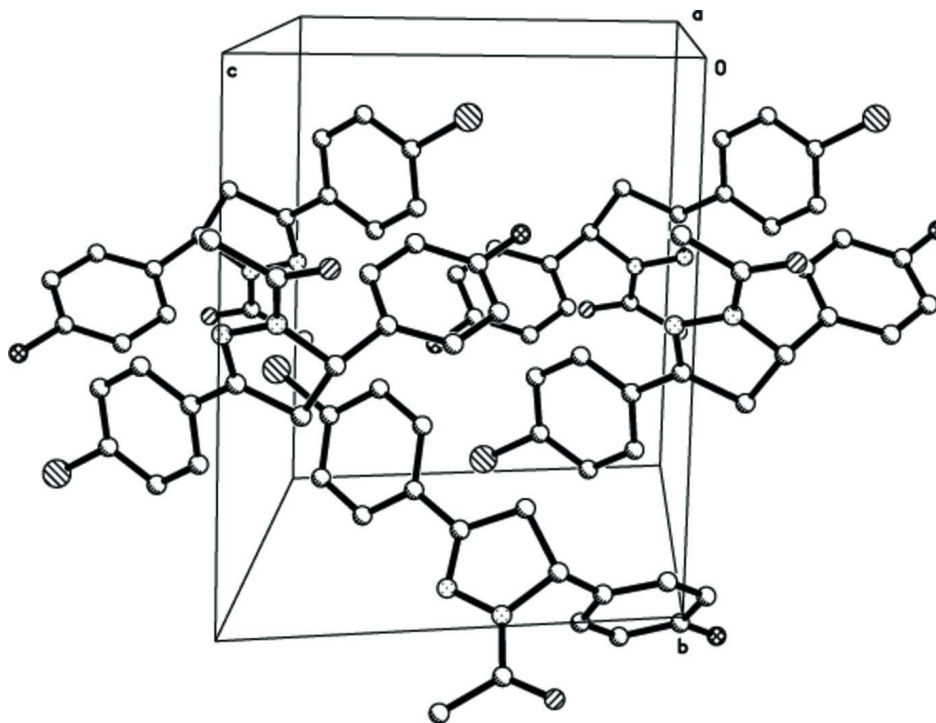


Figure 2

View of the crystal packing of (I) in the unit cell.

1-Acetyl-3-(4-chlorophenyl)-5-(4-fluorophenyl)-2-pyrazoline*Crystal data*C₁₇H₁₄ClFN₂O $M_r = 316.75$ Monoclinic, $P2_1/c$

Hall symbol: -P 2ybc

 $a = 14.5425$ (19) Å $b = 11.3580$ (14) Å $c = 9.6494$ (13) Å $\beta = 108.154$ (2)° $V = 1514.5$ (3) Å³ $Z = 4$ $F(000) = 656$ $D_x = 1.389$ Mg m⁻³Mo $K\alpha$ radiation, $\lambda = 0.71073$ Å

Cell parameters from 2887 reflections

 $\theta = 2.9$ – 25.9 ° $\mu = 0.27$ mm⁻¹ $T = 273$ K

Bar, colourless

 $0.14 \times 0.12 \times 0.06$ mm*Data collection*Bruker SMART CCD area-detector
diffractometer

Radiation source: fine-focus sealed tube

Graphite monochromator

 φ and ω scans

7793 measured reflections

2676 independent reflections

2077 reflections with $I > 2\sigma(I)$ $R_{int} = 0.021$ $\theta_{max} = 25.1$ °, $\theta_{min} = 2.3$ ° $h = -17 \rightarrow 17$ $k = -13 \rightarrow 11$ $l = -11 \rightarrow 9$ *Refinement*Refinement on F^2

Least-squares matrix: full

 $R[F^2 > 2\sigma(F^2)] = 0.037$ $wR(F^2) = 0.098$ $S = 1.03$

2676 reflections

200 parameters

0 restraints

Primary atom site location: structure-invariant
direct methodsSecondary atom site location: difference Fourier
mapHydrogen site location: inferred from
neighbouring sites

H-atom parameters constrained

 $w = 1/[\sigma^2(F_o^2) + (0.0385P)^2 + 0.4849P]$ where $P = (F_o^2 + 2F_c^2)/3$ $(\Delta/\sigma)_{max} < 0.001$ $\Delta\rho_{max} = 0.20$ e Å⁻³ $\Delta\rho_{min} = -0.21$ e Å⁻³Extinction correction: *SHELXL97* (Sheldrick,
2008), $F_c^* = kFc[1 + 0.001x\text{Fc}^2\lambda^3/\sin(2\theta)]^{-1/4}$

Extinction coefficient: 0.0031 (10)

Special details

Geometry. All e.s.d.'s (except the e.s.d. in the dihedral angle between two l.s. planes) are estimated using the full covariance matrix. The cell e.s.d.'s are taken into account individually in the estimation of e.s.d.'s in distances, angles and torsion angles; correlations between e.s.d.'s in cell parameters are only used when they are defined by crystal symmetry. An approximate (isotropic) treatment of cell e.s.d.'s is used for estimating e.s.d.'s involving l.s. planes.

Refinement. Refinement of F^2 against ALL reflections. The weighted R -factor wR and goodness of fit S are based on F^2 , conventional R -factors R are based on F , with F set to zero for negative F^2 . The threshold expression of $F^2 > \sigma(F^2)$ is used only for calculating R -factors(gt) etc. and is not relevant to the choice of reflections for refinement. R -factors based on F^2 are statistically about twice as large as those based on F , and R -factors based on ALL data will be even larger.

Fractional atomic coordinates and isotropic or equivalent isotropic displacement parameters (Å²)

	x	y	z	U_{iso}^*/U_{eq}
Cl1	0.45884 (5)	0.34606 (6)	0.02764 (8)	0.0949 (3)

F1	0.70769 (11)	-0.14714 (11)	1.10898 (14)	0.0851 (4)
O1	1.00066 (10)	-0.13914 (13)	0.72130 (15)	0.0685 (4)
N1	0.88095 (10)	-0.02205 (13)	0.59652 (15)	0.0491 (4)
N2	0.80952 (10)	0.00960 (13)	0.46876 (15)	0.0477 (4)
C1	0.93307 (15)	-0.17908 (18)	0.4668 (2)	0.0610 (5)
H1A	0.9661	-0.1361	0.4109	0.092*
H1B	0.8660	-0.1873	0.4111	0.092*
H1C	0.9617	-0.2557	0.4898	0.092*
C2	0.94144 (13)	-0.11419 (16)	0.6044 (2)	0.0494 (4)
C3	0.88134 (13)	0.05353 (16)	0.72122 (18)	0.0477 (4)
H3	0.9474	0.0797	0.7730	0.057*
C4	0.82018 (14)	0.15743 (16)	0.64155 (19)	0.0500 (5)
H4A	0.7728	0.1808	0.6881	0.060*
H4B	0.8604	0.2246	0.6373	0.060*
C5	0.77233 (12)	0.10719 (16)	0.49247 (18)	0.0454 (4)
C6	0.83785 (12)	-0.00700 (15)	0.82540 (18)	0.0446 (4)
C7	0.76197 (13)	-0.08590 (17)	0.7766 (2)	0.0530 (5)
H7	0.7404	-0.1070	0.6786	0.064*
C8	0.71794 (15)	-0.13366 (18)	0.8711 (2)	0.0593 (5)
H8	0.6671	-0.1868	0.8382	0.071*
C9	0.75105 (15)	-0.10081 (18)	1.0151 (2)	0.0574 (5)
C10	0.82613 (14)	-0.02457 (17)	1.0681 (2)	0.0537 (5)
H10	0.8474	-0.0044	1.1664	0.064*
C11	0.86977 (13)	0.02200 (16)	0.97206 (18)	0.0481 (4)
H11	0.9215	0.0737	1.0065	0.058*
C12	0.69236 (12)	0.16303 (16)	0.37998 (19)	0.0455 (4)
C13	0.63734 (14)	0.10150 (18)	0.2576 (2)	0.0557 (5)
H13	0.6499	0.0222	0.2473	0.067*
C14	0.56443 (15)	0.15720 (19)	0.1515 (2)	0.0621 (5)
H14	0.5275	0.1154	0.0703	0.075*
C15	0.54634 (13)	0.27427 (18)	0.1657 (2)	0.0588 (5)
C16	0.59780 (14)	0.33572 (18)	0.2860 (3)	0.0630 (6)
H16	0.5842	0.4147	0.2957	0.076*
C17	0.67020 (14)	0.28007 (17)	0.3936 (2)	0.0558 (5)
H17	0.7046	0.3218	0.4764	0.067*

Atomic displacement parameters (\AA^2)

	U^{11}	U^{22}	U^{33}	U^{12}	U^{13}	U^{23}
C11	0.0695 (4)	0.0900 (5)	0.1055 (5)	0.0056 (3)	-0.0012 (3)	0.0364 (4)
F1	0.1184 (11)	0.0792 (9)	0.0750 (9)	-0.0204 (8)	0.0552 (8)	0.0010 (7)
O1	0.0622 (9)	0.0758 (10)	0.0578 (9)	0.0125 (7)	0.0045 (7)	0.0014 (7)
N1	0.0505 (8)	0.0581 (9)	0.0370 (8)	0.0056 (7)	0.0111 (7)	-0.0052 (7)
N2	0.0485 (8)	0.0565 (9)	0.0372 (8)	0.0015 (7)	0.0121 (6)	-0.0026 (7)
C1	0.0680 (13)	0.0577 (12)	0.0615 (12)	0.0051 (10)	0.0261 (10)	-0.0078 (10)
C2	0.0464 (10)	0.0528 (11)	0.0501 (11)	-0.0025 (9)	0.0167 (9)	0.0005 (9)
C3	0.0456 (10)	0.0571 (11)	0.0393 (9)	-0.0055 (8)	0.0115 (8)	-0.0086 (8)
C4	0.0573 (11)	0.0502 (11)	0.0437 (10)	-0.0045 (9)	0.0177 (8)	-0.0045 (8)

C5	0.0474 (10)	0.0504 (11)	0.0413 (9)	-0.0051 (8)	0.0180 (8)	-0.0026 (8)
C6	0.0431 (9)	0.0497 (10)	0.0381 (9)	0.0034 (8)	0.0084 (7)	-0.0024 (8)
C7	0.0529 (11)	0.0613 (12)	0.0416 (10)	-0.0062 (9)	0.0098 (8)	-0.0067 (9)
C8	0.0599 (12)	0.0570 (12)	0.0623 (13)	-0.0115 (10)	0.0209 (10)	-0.0044 (10)
C9	0.0710 (13)	0.0546 (12)	0.0542 (12)	0.0017 (10)	0.0302 (10)	0.0049 (9)
C10	0.0666 (12)	0.0541 (11)	0.0388 (10)	0.0037 (10)	0.0142 (9)	-0.0018 (8)
C11	0.0487 (10)	0.0498 (10)	0.0416 (10)	0.0001 (8)	0.0078 (8)	-0.0043 (8)
C12	0.0452 (10)	0.0504 (11)	0.0441 (10)	-0.0035 (8)	0.0188 (8)	0.0003 (8)
C13	0.0609 (12)	0.0519 (11)	0.0513 (11)	-0.0008 (9)	0.0131 (9)	-0.0012 (9)
C14	0.0592 (12)	0.0677 (14)	0.0526 (12)	-0.0076 (10)	0.0075 (10)	0.0003 (10)
C15	0.0450 (11)	0.0608 (13)	0.0685 (13)	-0.0036 (9)	0.0144 (9)	0.0141 (10)
C16	0.0534 (12)	0.0488 (11)	0.0880 (16)	0.0000 (9)	0.0238 (11)	0.0063 (11)
C17	0.0511 (11)	0.0532 (12)	0.0636 (12)	-0.0058 (9)	0.0183 (10)	-0.0062 (10)

Geometric parameters (Å, °)

C11—C15	1.733 (2)	C6—C7	1.385 (2)
F1—C9	1.361 (2)	C7—C8	1.378 (3)
O1—C2	1.220 (2)	C7—H7	0.9300
N1—C2	1.354 (2)	C8—C9	1.373 (3)
N1—N2	1.3893 (19)	C8—H8	0.9300
N1—C3	1.477 (2)	C9—C10	1.362 (3)
N2—C5	1.285 (2)	C10—C11	1.381 (3)
C1—C2	1.490 (3)	C10—H10	0.9300
C1—H1A	0.9600	C11—H11	0.9300
C1—H1B	0.9600	C12—C17	1.384 (3)
C1—H1C	0.9600	C12—C13	1.391 (3)
C3—C6	1.510 (2)	C13—C14	1.377 (3)
C3—C4	1.533 (3)	C13—H13	0.9300
C3—H3	0.9800	C14—C15	1.371 (3)
C4—C5	1.502 (2)	C14—H14	0.9300
C4—H4A	0.9700	C15—C16	1.362 (3)
C4—H4B	0.9700	C16—C17	1.380 (3)
C5—C12	1.465 (2)	C16—H16	0.9300
C6—C11	1.385 (2)	C17—H17	0.9300
C2—N1—N2	122.87 (14)	C8—C7—H7	119.5
C2—N1—C3	124.48 (15)	C6—C7—H7	119.5
N2—N1—C3	112.62 (14)	C9—C8—C7	118.28 (18)
C5—N2—N1	107.76 (14)	C9—C8—H8	120.9
C2—C1—H1A	109.5	C7—C8—H8	120.9
C2—C1—H1B	109.5	F1—C9—C10	118.61 (18)
H1A—C1—H1B	109.5	F1—C9—C8	118.66 (19)
C2—C1—H1C	109.5	C10—C9—C8	122.73 (18)
H1A—C1—H1C	109.5	C9—C10—C11	118.23 (17)
H1B—C1—H1C	109.5	C9—C10—H10	120.9
O1—C2—N1	119.36 (17)	C11—C10—H10	120.9
O1—C2—C1	123.17 (18)	C10—C11—C6	121.12 (17)

N1—C2—C1	117.46 (17)	C10—C11—H11	119.4
N1—C3—C6	112.45 (15)	C6—C11—H11	119.4
N1—C3—C4	100.64 (13)	C17—C12—C13	118.28 (18)
C6—C3—C4	112.75 (14)	C17—C12—C5	120.02 (17)
N1—C3—H3	110.2	C13—C12—C5	121.70 (17)
C6—C3—H3	110.2	C14—C13—C12	120.43 (19)
C4—C3—H3	110.2	C14—C13—H13	119.8
C5—C4—C3	102.19 (14)	C12—C13—H13	119.8
C5—C4—H4A	111.3	C15—C14—C13	119.92 (19)
C3—C4—H4A	111.3	C15—C14—H14	120.0
C5—C4—H4B	111.3	C13—C14—H14	120.0
C3—C4—H4B	111.3	C16—C15—C14	120.72 (19)
H4A—C4—H4B	109.2	C16—C15—C11	119.42 (17)
N2—C5—C12	121.50 (16)	C14—C15—C11	119.84 (17)
N2—C5—C4	113.79 (16)	C15—C16—C17	119.62 (19)
C12—C5—C4	124.69 (16)	C15—C16—H16	120.2
C11—C6—C7	118.63 (17)	C17—C16—H16	120.2
C11—C6—C3	119.71 (16)	C16—C17—C12	120.97 (19)
C7—C6—C3	121.53 (15)	C16—C17—H17	119.5
C8—C7—C6	120.99 (17)	C12—C17—H17	119.5

Hydrogen-bond geometry (Å, °)

<i>D—H...A</i>	<i>D—H</i>	<i>H...A</i>	<i>D...A</i>	<i>D—H...A</i>
C4—H4B...O1 ⁱ	0.97	2.57	3.425 (2)	147

Symmetry code: (i) $-x+2, y+1/2, -z+3/2$.