

Acta Crystallographica Section E

Structure Reports

Online

ISSN 1600-5368

Diethyl {(4-methoxyphenyl)[5-(4-nitrophenyl)-1,3,4-thiadiazol-2-ylamino]-methyl}phosphonate

Li-He Yin, Rong Wan,* Feng Han, Bin Wang and Jin-Tang Wang

Department of Applied Chemistry, College of Science, Nanjing University of Technology, No. 5 Xinmofan Road, Nanjing 210009, People's Republic of China
Correspondence e-mail: rwan@njut.edu.cn

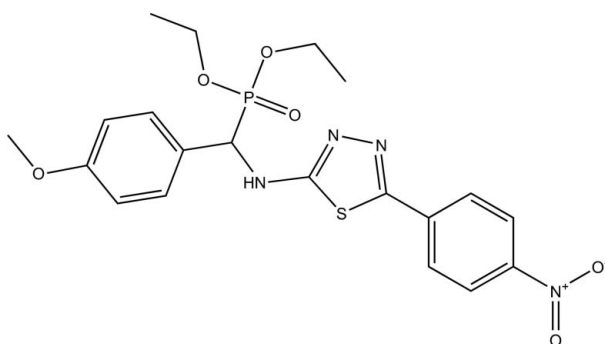
Received 6 March 2008; accepted 9 June 2008

Key indicators: single-crystal X-ray study; $T = 298$ K; mean $\sigma(\text{C}-\text{C}) = 0.007$ Å; R factor = 0.069; wR factor = 0.146; data-to-parameter ratio = 14.8.

The title compound, $\text{C}_{20}\text{H}_{23}\text{N}_4\text{O}_6\text{PS}$, was synthesized by the reaction of *N*-(4-methoxybenzylidene)-5-(4-nitrophenyl)-1,3,4-thiadiazol-2-amine and diethyl phosphite. The thiadiazole and nitro-substituted phenyl rings in the molecule are approximately coplanar, the dihedral angle being 5.3 (2)°. The dihedral angle formed by the mean plane through all non-H atoms of both the thiadiazole and the nitro-substituted phenyl ring with the plane of the methoxy-substituted phenyl ring is 48.9 (2)°. In the crystal structure, molecules form centrosymmetric dimers as a result of $\text{N}-\text{H}\cdots\text{O}$ bonds involving amine H and phosphine oxide O atoms.

Related literature

For related literature, see: Nakagawa *et al.* (1996); Wang *et al.* (1999).



Experimental

Crystal data

$\text{C}_{20}\text{H}_{23}\text{N}_4\text{O}_6\text{PS}$
 $M_r = 478.45$
Monoclinic, $P2_1/n$
 $a = 11.481$ (2) Å
 $b = 19.426$ (4) Å
 $c = 11.960$ (2) Å
 $\beta = 117.08$ (3)°
 $V = 2375.0$ (10) Å³
 $Z = 4$
Mo $K\alpha$ radiation
 $\mu = 0.25$ mm⁻¹
 $T = 298$ (2) K
 $0.30 \times 0.20 \times 0.10$ mm

Data collection

Enraf–Nonius CAD-4 diffractometer
Absorption correction: ψ scan (North *et al.*, 1968)
 $T_{\min} = 0.930$, $T_{\max} = 0.976$
4497 measured reflections
2476 independent reflections
2330 reflections with $I > 2\sigma(I)$
 $R_{\text{int}} = 0.064$
3 standard reflections every 200 reflections
intensity decay: none

Refinement

$R[F^2 > 2\sigma(F^2)] = 0.068$
 $wR(F^2) = 0.146$
 $S = 1.03$
4276 reflections
289 parameters
H-atom parameters constrained
 $\Delta\rho_{\max} = 0.30$ e Å⁻³
 $\Delta\rho_{\min} = -0.21$ e Å⁻³

Table 1

Hydrogen-bond geometry (Å, °).

$D-\text{H}\cdots A$	$D-\text{H}$	$\text{H}\cdots A$	$D\cdots A$	$D-\text{H}\cdots A$
$\text{N1}-\text{H1A}\cdots\text{O5}^i$	0.86	1.94	2.782 (6)	165

Symmetry code: (i) $-x, -y, -z$.

Data collection: *CAD-4 Software* (Enraf–Nonius, 1989); cell refinement: *CAD-4 Software*; data reduction: *XCAD4* (Harms & Wocadlo, 1995); program(s) used to solve structure: *SHELXS97* (Sheldrick, 2008); program(s) used to refine structure: *SHELXL97* (Sheldrick, 2008); molecular graphics: *SHELXTL* (Sheldrick, 2008); software used to prepare material for publication: *SHELXL97*.

The authors are grateful to Professor Hua-Qin Wang of Nanjing University, for providing the Enraf–Nonius CAD-4 diffractometer for this research project.

Supplementary data and figures for this paper are available from the IUCr electronic archives (Reference: YA2071).

References

- Enraf–Nonius (1989). *CAD-4 Software*. Enraf–Nonius, Delft, The Netherlands.
Harms, K. & Wocadlo, S. (1995). *XCAD4*. University of Marburg, Germany.
Nakagawa, Y., Nishimura, K., Izumi, K., Kinoshita, K., Kimura, T. & Kurihara, N. (1996). *J. Pesticide Sci.* **21**, 195–201.
North, A. C. T., Phillips, D. C. & Mathews, F. S. (1968). *Acta Cryst.* **A24**, 351–359.
Sheldrick, G. M. (2008). *Acta Cryst.* **A64**, 112–122.
Wang, Y. G., Cao, L., Yan, J., Ye, W. F., Zhou, Q. C. & Lu, B. X. (1999). *Chem. J. Chin. Univ.* **20**, 1903–1905.

supporting information

Acta Cryst. (2008). E64, o1376 [doi:10.1107/S1600536808017364]

Diethyl {(4-methoxyphenyl)[5-(4-nitrophenyl)-1,3,4-thiadiazol-2-ylamino]-methyl}phosphonate

Li-He Yin, Rong Wan, Feng Han, Bin Wang and Jin-Tang Wang

S1. Comment

1,3,4-Thiadiazole derivatives represent an interesting class of biologically important compounds, which often exhibit insecticidal, fungicidal and other biological activities (Nakagawa *et al.*, 1996; Wang *et al.*, 1999).

We report here the X-ray structure of the title compound, (I) (Fig. 1). The thiadiazole and nitro-substituted phenyl rings in the molecule of (I) are approximately coplanar: the dihedral angle between the C11—C16 and S/C10/N2/N3/C9 planes being 5.3 (2)°, the maximum deviation from the mean plane N1/C9/C10/N2/N3/S/C11/C12/C13/C14/C15/C16 does not exceed 0.11 Å. The dihedral angle formed by the latter plane with the plane of the methoxy-substituted phenyl ring C2—C7 is equal to 48.9 (2)°.

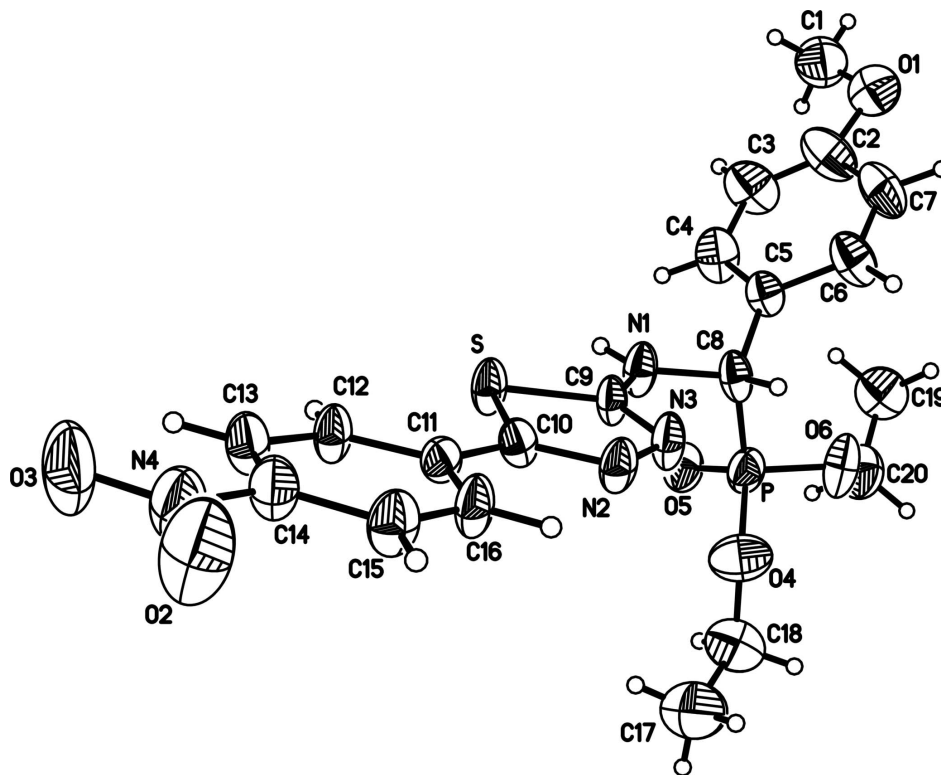
In the crystal structure, molecules of (I) form centrosymmetric dimers due to N—H···O bonds involving amine hydrogen and phosphineoxide oxygen [N1···O5ⁱ 2.782 (6) Å; symmetry code (i): -x, -y, -z].

S2. Experimental

N-(4-methoxybenzylidene)-5-(4-nitrophenyl)-1,3,4-thiadiazol-2-amine (2 mmol) and diethyl phosphite (5 mmol) were mixed in a 25 ml flask (without any solvent), and kept in the oil bath at 90°C for 6 h. After cooling, the crude product (I) precipitated and was filtered. Pure compound (I) was obtained by recrystallization from ethanol (20 ml). Crystals of (I) suitable for X-ray diffraction were obtained by slow evaporation of an acetone solution.

S3. Refinement

All H atoms were positioned geometrically, with N—H=0.86 Å and C—H=0.98, 0.97, 0.96 and 0.93 Å for methine, methylene, methyl and aromatic H atoms, respectively, and constrained to ride on their parent atoms, with $U_{\text{iso}}(\text{H})=xU_{\text{eq}}(\text{C}, \text{N})$, where $x=1.5$ for methyl H atoms and $x=1.2$ for all other H atoms.

**Figure 1**

Molecular structure of (I). Displacement ellipsoids are drawn at the 30% probability level. H atoms are shown as small circles of arbitrary radius.

Diethyl {(4-methoxyphenyl)[5-(4-nitrophenyl)-1,3,4-thiadiazol-2-ylamino]methyl}phosphonate

Crystal data

$C_{20}H_{23}N_4O_6PS$

$M_r = 478.45$

Monoclinic, $P2_1/n$

Hall symbol: $-P\ 2_1n$

$a = 11.481\ (2)\ \text{\AA}$

$b = 19.426\ (4)\ \text{\AA}$

$c = 11.960\ (2)\ \text{\AA}$

$\beta = 117.08\ (3)^\circ$

$V = 2375.0\ (10)\ \text{\AA}^3$

$Z = 4$

$F(000) = 1000$

$D_x = 1.338\ \text{Mg m}^{-3}$

Melting point: 476 K

Mo $K\alpha$ radiation, $\lambda = 0.71073\ \text{\AA}$

Cell parameters from 25 reflections

$\theta = 9\text{--}13^\circ$

$\mu = 0.25\ \text{mm}^{-1}$

$T = 298\ \text{K}$

Block, light yellow

$0.30 \times 0.20 \times 0.10\ \text{mm}$

Data collection

Enraf–Nonius CAD-4

diffractometer

Radiation source: fine-focus sealed tube

Graphite monochromator

$\omega/2\theta$ scans

Absorption correction: ψ scan

(North *et al.*, 1968)

$T_{\min} = 0.930$, $T_{\max} = 0.976$

4497 measured reflections

4276 independent reflections

2330 reflections with $I > 2\sigma(I)$

$R_{\text{int}} = 0.064$

$\theta_{\max} = 25.2^\circ$, $\theta_{\min} = 2.0^\circ$

$h = -13 \rightarrow 12$

$k = 0 \rightarrow 23$

$l = 0 \rightarrow 14$

3 standard reflections every 200 reflections

intensity decay: none

Refinement

Refinement on F^2
 Least-squares matrix: full
 $R[F^2 > 2\sigma(F^2)] = 0.068$
 $wR(F^2) = 0.146$
 $S = 1.03$
 4276 reflections
 289 parameters
 0 restraints
 Primary atom site location: structure-invariant
 direct methods

Secondary atom site location: difference Fourier
 map
 Hydrogen site location: inferred from
 neighbouring sites
 H-atom parameters constrained
 $w = 1/[\sigma^2(F_o^2) + (0.03P)^2 + 3.2P]$
 where $P = (F_o^2 + 2F_c^2)/3$
 $(\Delta/\sigma)_{\max} < 0.001$
 $\Delta\rho_{\max} = 0.30 \text{ e } \text{Å}^{-3}$
 $\Delta\rho_{\min} = -0.21 \text{ e } \text{Å}^{-3}$

Special details

Geometry. All e.s.d.'s (except the e.s.d. in the dihedral angle between two l.s. planes) are estimated using the full covariance matrix. The cell e.s.d.'s are taken into account individually in the estimation of e.s.d.'s in distances, angles and torsion angles; correlations between e.s.d.'s in cell parameters are only used when they are defined by crystal symmetry. An approximate (isotropic) treatment of cell e.s.d.'s is used for estimating e.s.d.'s involving l.s. planes.

Refinement. Refinement of F^2 against ALL reflections. The weighted R -factor wR and goodness of fit S are based on F^2 , conventional R -factors R are based on F , with F set to zero for negative F^2 . The threshold expression of $F^2 > \sigma(F^2)$ is used only for calculating R -factors(gt) *etc.* and is not relevant to the choice of reflections for refinement. R -factors based on F^2 are statistically about twice as large as those based on F , and R -factors based on ALL data will be even larger.

Fractional atomic coordinates and isotropic or equivalent isotropic displacement parameters (Å^2)

	<i>x</i>	<i>y</i>	<i>z</i>	$U_{\text{iso}}^*/U_{\text{eq}}$
S	0.11752 (9)	0.17107 (5)	-0.10907 (11)	0.0688 (4)
P	0.23008 (11)	-0.02508 (6)	0.20206 (12)	0.0738 (4)
N1	0.1765 (3)	0.04373 (17)	-0.0120 (3)	0.0700 (10)
H1A	0.0966	0.0342	-0.0631	0.084*
O1	0.2443 (4)	-0.2713 (2)	-0.1562 (4)	0.1097 (12)
C1	0.1296 (7)	-0.2920 (3)	-0.2318 (6)	0.113 (2)
H1B	0.1350	-0.3368	-0.2631	0.185*
H1C	0.0906	-0.2603	-0.3007	0.185*
H1D	0.0769	-0.2945	-0.1885	0.185*
N2	0.3560 (3)	0.19583 (16)	0.0431 (3)	0.0639 (9)
O2	0.3525 (4)	0.53251 (19)	-0.1632 (4)	0.154 (2)
C2	0.2280 (7)	-0.2053 (3)	-0.1134 (7)	0.108 (2)
N3	0.3379 (3)	0.12947 (16)	0.0636 (3)	0.0699 (10)
O3	0.1531 (4)	0.52326 (17)	-0.2953 (4)	0.1379 (17)
C3	0.1235 (6)	-0.1701 (3)	-0.1297 (6)	0.1072 (19)
H3B	0.0416	-0.1890	-0.1795	0.129*
N4	0.2539 (5)	0.4987 (2)	-0.2075 (4)	0.0979 (14)
C4	0.1299 (4)	-0.1052 (2)	-0.0755 (5)	0.0913 (16)
H4A	0.0530	-0.0821	-0.0911	0.110*
O4	0.2896 (4)	0.04106 (19)	0.2851 (4)	0.1017 (13)
O5	0.0918 (3)	-0.03805 (17)	0.1673 (3)	0.0877 (10)
C5	0.2466 (4)	-0.0758 (2)	-0.0010 (4)	0.0624 (11)
O6	0.3218 (3)	-0.0846 (2)	0.2736 (3)	0.1005 (12)
C6	0.3601 (5)	-0.1129 (3)	0.0189 (5)	0.0917 (16)
H6A	0.4426	-0.0944	0.0683	0.110*

C7	0.3476 (6)	-0.1768 (3)	-0.0357 (6)	0.0997 (17)
H7A	0.4229	-0.2017	-0.0194	0.120*
C8	0.2618 (4)	-0.0111 (2)	0.0683 (4)	0.0660 (12)
H8A	0.3527	0.0042	0.1000	0.079*
C9	0.2198 (3)	0.1078 (2)	-0.0078 (4)	0.0581 (10)
C10	0.2513 (3)	0.22694 (18)	-0.0425 (4)	0.0560 (10)
C11	0.2495 (3)	0.29723 (19)	-0.0822 (3)	0.0553 (10)
C12	0.1363 (3)	0.32734 (19)	-0.1726 (4)	0.0656 (12)
H12A	0.0584	0.3026	-0.2044	0.079*
C13	0.1361 (4)	0.3941 (2)	-0.2172 (4)	0.0795 (14)
H13A	0.0599	0.4130	-0.2800	0.095*
C14	0.2518 (4)	0.4315 (2)	-0.1658 (4)	0.0774 (13)
C15	0.3662 (4)	0.4028 (2)	-0.0697 (4)	0.0732 (13)
H15A	0.4426	0.4287	-0.0333	0.088*
C16	0.3654 (3)	0.3367 (2)	-0.0296 (4)	0.0698 (12)
H16A	0.4417	0.3177	0.0328	0.084*
C17	0.2907 (7)	0.1293 (4)	0.4169 (7)	0.118 (3)
H17A	0.2690	0.1414	0.4830	0.177*
H17B	0.2346	0.1539	0.3418	0.177*
H17C	0.3802	0.1413	0.4413	0.177*
C18	0.2731 (7)	0.0561 (3)	0.3935 (7)	0.124 (2)
H18A	0.3368	0.0309	0.4653	0.151*
H18B	0.1863	0.0425	0.3798	0.151*
C19	0.2659 (6)	-0.2016 (3)	0.2448 (6)	0.121 (2)
H19A	0.2385	-0.2397	0.2783	0.182*
H19B	0.3481	-0.2123	0.2461	0.182*
H19C	0.2014	-0.1930	0.1600	0.182*
C20	0.2802 (6)	-0.1418 (3)	0.3193 (6)	0.1095 (18)
H20A	0.1973	-0.1313	0.3184	0.131*
H20B	0.3437	-0.1510	0.4055	0.131*

Atomic displacement parameters (\AA^2)

	U^{11}	U^{22}	U^{33}	U^{12}	U^{13}	U^{23}
S	0.0357 (5)	0.0488 (6)	0.0856 (8)	-0.0028 (5)	-0.0039 (5)	0.0022 (6)
P	0.0516 (7)	0.0748 (8)	0.0725 (8)	0.0008 (6)	0.0087 (6)	-0.0038 (7)
N1	0.0389 (18)	0.057 (2)	0.085 (2)	-0.0010 (16)	0.0027 (17)	0.0111 (18)
O1	0.118 (3)	0.102 (3)	0.107 (3)	0.011 (3)	0.094 (3)	-0.013 (2)
C1	0.119 (5)	0.123 (6)	0.110 (5)	0.008 (5)	0.068 (5)	0.014 (4)
N2	0.0360 (17)	0.051 (2)	0.073 (2)	-0.0047 (15)	-0.0024 (15)	0.0008 (17)
O2	0.135 (4)	0.066 (2)	0.163 (4)	-0.040 (2)	-0.018 (3)	0.012 (2)
C2	0.137 (6)	0.048 (3)	0.168 (6)	-0.007 (3)	0.095 (5)	-0.018 (3)
N3	0.0392 (18)	0.050 (2)	0.087 (2)	0.0054 (15)	-0.0002 (17)	0.0068 (18)
O3	0.130 (3)	0.059 (2)	0.148 (4)	0.018 (2)	-0.003 (3)	0.015 (2)
C3	0.100 (4)	0.073 (4)	0.150 (5)	-0.031 (3)	0.058 (4)	-0.039 (4)
N4	0.091 (3)	0.057 (3)	0.096 (3)	-0.002 (2)	0.001 (3)	0.001 (2)
C4	0.066 (3)	0.058 (3)	0.124 (4)	-0.014 (2)	0.020 (3)	-0.015 (3)
O4	0.117 (3)	0.097 (3)	0.113 (3)	-0.037 (2)	0.036 (3)	-0.049 (2)

O5	0.0603 (19)	0.104 (2)	0.091 (2)	0.0058 (17)	0.0280 (17)	0.0085 (19)
C5	0.055 (2)	0.050 (2)	0.082 (3)	-0.001 (2)	0.031 (2)	0.000 (2)
O6	0.068 (2)	0.101 (3)	0.104 (3)	0.019 (2)	0.0099 (19)	0.043 (2)
C6	0.073 (3)	0.080 (4)	0.136 (5)	0.002 (3)	0.060 (3)	-0.008 (3)
C7	0.116 (5)	0.062 (3)	0.151 (5)	0.024 (3)	0.086 (4)	0.017 (3)
C8	0.036 (2)	0.057 (3)	0.096 (3)	0.0057 (18)	0.023 (2)	0.006 (2)
C9	0.032 (2)	0.051 (2)	0.072 (3)	0.0090 (17)	0.0069 (18)	0.006 (2)
C10	0.0327 (19)	0.042 (2)	0.072 (3)	-0.0039 (16)	0.0058 (18)	-0.0128 (19)
C11	0.040 (2)	0.052 (2)	0.055 (2)	0.0013 (17)	0.0056 (17)	-0.0093 (19)
C12	0.041 (2)	0.041 (2)	0.076 (3)	-0.0024 (17)	-0.0062 (19)	0.001 (2)
C13	0.055 (3)	0.046 (2)	0.089 (3)	-0.002 (2)	-0.009 (2)	0.012 (2)
C14	0.063 (3)	0.052 (3)	0.084 (3)	0.000 (2)	0.006 (2)	-0.002 (2)
C15	0.046 (2)	0.065 (3)	0.085 (3)	-0.009 (2)	0.009 (2)	0.003 (2)
C16	0.039 (2)	0.051 (2)	0.080 (3)	0.0010 (18)	-0.0073 (19)	0.004 (2)
C17	0.129 (7)	0.116 (7)	0.109 (6)	0.002 (6)	-0.037 (5)	-0.029 (6)
C18	0.136 (6)	0.108 (5)	0.127 (6)	-0.003 (4)	0.071 (5)	-0.018 (4)
C19	0.124 (5)	0.111 (5)	0.133 (5)	-0.007 (4)	0.063 (4)	-0.004 (4)
C20	0.106 (4)	0.113 (5)	0.110 (5)	0.010 (4)	0.050 (4)	0.025 (4)

Geometric parameters (Å, °)

S—C10	1.749 (3)	O6—C20	1.415 (6)
S—C9	1.750 (4)	C6—C7	1.381 (7)
P—O5	1.468 (3)	C6—H6A	0.9300
P—O6	1.535 (3)	C7—H7A	0.9300
P—O4	1.577 (3)	C8—H8A	0.9800
P—C8	1.816 (5)	C10—C11	1.442 (5)
N1—C9	1.332 (5)	C11—C12	1.386 (5)
N1—C8	1.469 (5)	C11—C16	1.411 (5)
N1—H1A	0.8600	C12—C13	1.402 (5)
O1—C1	1.276 (6)	C12—H12A	0.9300
O1—C2	1.423 (6)	C13—C14	1.387 (5)
C1—H1B	0.9600	C13—H13A	0.9300
C1—H1C	0.9600	C14—C15	1.408 (5)
C1—H1D	0.9600	C15—C16	1.373 (5)
N2—C10	1.318 (4)	C15—H15A	0.9300
N2—N3	1.346 (4)	C16—H16A	0.9300
O2—N4	1.203 (5)	C17—C18	1.446 (8)
C2—C3	1.316 (7)	C17—H17A	0.9600
C2—C7	1.376 (7)	C17—H17B	0.9600
N3—C9	1.301 (4)	C17—H17C	0.9600
O3—N4	1.251 (5)	C18—H18A	0.9700
C3—C4	1.404 (6)	C18—H18B	0.9700
C3—H3B	0.9300	C19—C20	1.426 (7)
N4—C14	1.402 (6)	C19—H19A	0.9600
C4—C5	1.352 (5)	C19—H19B	0.9600
C4—H4A	0.9300	C19—H19C	0.9600
O4—C18	1.423 (7)	C20—H20A	0.9700

C5—C6	1.412 (6)	C20—H20B	0.9700
C5—C8	1.471 (5)		
C10—S—C9	87.00 (18)	N3—C9—N1	125.9 (3)
O5—P—O6	114.1 (2)	N3—C9—S	113.4 (3)
O5—P—O4	114.9 (2)	N1—C9—S	120.6 (3)
O6—P—O4	105.8 (2)	N2—C10—C11	124.1 (3)
O5—P—C8	113.63 (19)	N2—C10—S	111.7 (3)
O6—P—C8	104.0 (2)	C11—C10—S	124.0 (3)
O4—P—C8	103.3 (2)	C12—C11—C16	118.6 (4)
C9—N1—C8	121.8 (3)	C12—C11—C10	121.6 (3)
C9—N1—H1A	119.1	C16—C11—C10	119.8 (3)
C8—N1—H1A	119.1	C11—C12—C13	121.7 (4)
C1—O1—C2	106.1 (5)	C11—C12—H12A	119.1
O1—C1—H1B	109.5	C13—C12—H12A	119.1
O1—C1—H1C	109.5	C14—C13—C12	118.6 (4)
H1B—C1—H1C	109.5	C14—C13—H13A	120.7
O1—C1—H1D	109.5	C12—C13—H13A	120.7
H1B—C1—H1D	109.5	C13—C14—N4	119.8 (4)
H1C—C1—H1D	109.5	C13—C14—C15	120.3 (4)
C10—N2—N3	114.8 (3)	N4—C14—C15	119.8 (4)
C3—C2—C7	116.9 (5)	C16—C15—C14	120.2 (4)
C3—C2—O1	132.5 (6)	C16—C15—H15A	119.9
C7—C2—O1	110.5 (6)	C14—C15—H15A	119.9
C9—N3—N2	113.1 (3)	C15—C16—C11	120.5 (3)
C2—C3—C4	123.1 (5)	C15—C16—H16A	119.8
C2—C3—H3B	118.5	C11—C16—H16A	119.8
C4—C3—H3B	118.5	C18—C17—H17A	109.5
O2—N4—O3	119.1 (4)	C18—C17—H17B	109.5
O2—N4—C14	121.2 (4)	H17A—C17—H17B	109.5
O3—N4—C14	119.7 (4)	C18—C17—H17C	109.5
C5—C4—C3	120.8 (5)	H17A—C17—H17C	109.5
C5—C4—H4A	119.6	H17B—C17—H17C	109.5
C3—C4—H4A	119.6	O4—C18—C17	108.2 (6)
C18—O4—P	122.8 (4)	O4—C18—H18A	110.1
C4—C5—C6	117.2 (4)	C17—C18—H18A	110.1
C4—C5—C8	124.1 (4)	O4—C18—H18B	110.1
C6—C5—C8	118.5 (4)	C17—C18—H18B	110.1
C20—O6—P	122.7 (3)	H18A—C18—H18B	108.4
C7—C6—C5	119.4 (5)	C20—C19—H19A	109.5
C7—C6—H6A	120.3	C20—C19—H19B	109.5
C5—C6—H6A	120.3	H19A—C19—H19B	109.5
C2—C7—C6	122.5 (5)	C20—C19—H19C	109.5
C2—C7—H7A	118.7	H19A—C19—H19C	109.5
C6—C7—H7A	118.7	H19B—C19—H19C	109.5
N1—C8—C5	112.2 (3)	O6—C20—C19	111.2 (5)
N1—C8—P	110.0 (3)	O6—C20—H20A	109.4
C5—C8—P	110.4 (3)	C19—C20—H20A	109.4

N1—C8—H8A	108.0	O6—C20—H20B	109.4
C5—C8—H8A	108.0	C19—C20—H20B	109.4
P—C8—H8A	108.0	H20A—C20—H20B	108.0
C1—O1—C2—C3	6.7 (9)	N2—N3—C9—N1	176.5 (4)
C1—O1—C2—C7	-176.9 (5)	N2—N3—C9—S	-0.5 (5)
C10—N2—N3—C9	1.4 (5)	C8—N1—C9—N3	0.6 (7)
C7—C2—C3—C4	2.2 (10)	C8—N1—C9—S	177.5 (3)
O1—C2—C3—C4	178.5 (6)	C10—S—C9—N3	-0.3 (3)
C2—C3—C4—C5	-0.9 (9)	C10—S—C9—N1	-177.5 (4)
O5—P—O4—C18	48.1 (5)	N3—N2—C10—C11	-177.9 (4)
O6—P—O4—C18	-78.7 (5)	N3—N2—C10—S	-1.6 (5)
C8—P—O4—C18	172.4 (5)	C9—S—C10—N2	1.0 (3)
C3—C4—C5—C6	0.3 (8)	C9—S—C10—C11	177.4 (4)
C3—C4—C5—C8	-174.3 (5)	N2—C10—C11—C12	-179.8 (4)
O5—P—O6—C20	-9.6 (5)	S—C10—C11—C12	4.3 (6)
O4—P—O6—C20	117.7 (5)	N2—C10—C11—C16	0.9 (6)
C8—P—O6—C20	-133.9 (4)	S—C10—C11—C16	-175.0 (3)
C4—C5—C6—C7	-1.1 (7)	C16—C11—C12—C13	3.5 (6)
C8—C5—C6—C7	173.8 (5)	C10—C11—C12—C13	-175.8 (4)
C3—C2—C7—C6	-3.0 (9)	C11—C12—C13—C14	-2.3 (7)
O1—C2—C7—C6	179.9 (5)	C12—C13—C14—N4	-179.2 (4)
C5—C6—C7—C2	2.5 (9)	C12—C13—C14—C15	-0.8 (7)
C9—N1—C8—C5	-136.1 (4)	O2—N4—C14—C13	178.9 (5)
C9—N1—C8—P	100.6 (4)	O3—N4—C14—C13	-3.6 (8)
C4—C5—C8—N1	-49.1 (6)	O2—N4—C14—C15	0.5 (8)
C6—C5—C8—N1	136.4 (4)	O3—N4—C14—C15	177.9 (5)
C4—C5—C8—P	74.1 (5)	C13—C14—C15—C16	2.5 (7)
C6—C5—C8—P	-100.5 (4)	N4—C14—C15—C16	-179.1 (5)
O5—P—C8—N1	53.6 (3)	C14—C15—C16—C11	-1.2 (7)
O6—P—C8—N1	178.1 (3)	C12—C11—C16—C15	-1.7 (7)
O4—P—C8—N1	-71.6 (3)	C10—C11—C16—C15	177.6 (4)
O5—P—C8—C5	-70.8 (3)	P—O4—C18—C17	-157.3 (5)
O6—P—C8—C5	53.7 (3)	P—O6—C20—C19	105.9 (5)
O4—P—C8—C5	164.0 (3)		

Hydrogen-bond geometry (Å, °)

<i>D</i> —H \cdots <i>A</i>	<i>D</i> —H	H \cdots <i>A</i>	<i>D</i> \cdots <i>A</i>	<i>D</i> —H \cdots <i>A</i>
N1—H1A \cdots O5 ⁱ	0.86	1.94	2.782 (6)	165

Symmetry code: (i) -x, -y, -z.