

Acta Crystallographica Section E

Structure Reports

Online

ISSN 1600-5368

Bis[μ -3-(2-hydroxyethyl)-2-methyl-4-oxo-4H-pyrido[1,2-a]pyrimidin-9-olato- $\kappa^3N,O:O$]bis[aquachloridocopper(II)]

Ying Deng, Zhong-Shu Li and Bai-Wang Sun*

Ordered Matter Science Research Center, College of Chemistry and Chemical Engineering, Southeast University, Nanjing 210096, People's Republic of China
Correspondence e-mail: chmsunbw@seu.edu.cn

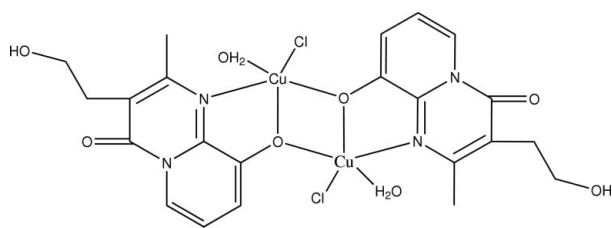
Received 13 August 2008; accepted 8 September 2008

Key indicators: single-crystal X-ray study; $T = 293$ K; mean $\sigma(C-C) = 0.005$ Å; R factor = 0.046; wR factor = 0.116; data-to-parameter ratio = 16.1.

In the dinuclear centrosymmetric copper(II) title compound, $[Cu_2(C_{11}H_{11}N_2O_2)_2Cl_2(H_2O)_2]$, each Cu^{II} ion has a slightly distorted trigonal-bipyramidal geometry and is coordinated by one N and one O atom from one 3-(2-hydroxyethyl)-2-methyl-4-oxopyrido[1,2-a]pyrimidin-9-olate ligand, another O atom from the second ligand, one water molecule and one Cl atom. The crystal structure involves intermolecular $C-H \cdots Cl$, $O-H \cdots Cl$ and $O-H \cdots O$ hydrogen bonds

Related literature

For related literature, see: Bayot *et al.* (2006); Chen *et al.* (2007); Sun *et al.* (2008); Wu *et al.* (2006).



Experimental

Crystal data

 $[Cu_2(C_{11}H_{11}N_2O_2)_2Cl_2(H_2O)_2]$ $M_r = 672.45$

Monoclinic, $P2_1/n$
 $a = 9.391$ (3) Å
 $b = 11.322$ (3) Å
 $c = 11.905$ (4) Å
 $\beta = 102.414$ (18)°
 $V = 1236.2$ (6) Å³

$Z = 2$
Mo $K\alpha$ radiation
 $\mu = 1.99$ mm⁻¹
 $T = 293$ (2) K
 $0.25 \times 0.12 \times 0.08$ mm

Data collection

Rigaku SCXmini diffractometer
Absorption correction: multi-scan
(*CrystalClear*; Rigaku, 2005)
 $T_{\min} = 0.890$, $T_{\max} = 1.000$
(expected range = 0.759–0.853)

12472 measured reflections
2826 independent reflections
2249 reflections with $I > 2\sigma(I)$
 $R_{\text{int}} = 0.056$

Refinement

$R[F^2 > 2\sigma(F^2)] = 0.045$
 $wR(F^2) = 0.115$
 $S = 1.01$
2826 reflections
176 parameters

H atoms treated by a mixture of independent and constrained refinement
 $\Delta\rho_{\max} = 0.49$ e Å⁻³
 $\Delta\rho_{\min} = -0.47$ e Å⁻³

Table 1

Hydrogen-bond geometry (Å, °).

$D-H \cdots A$	$D-H$	$H \cdots A$	$D \cdots A$	$D-H \cdots A$
$O5-H5C \cdots O2^i$	0.82	2.13	2.742 (4)	131
$O5-H5D \cdots O1^{ii}$	0.96	2.11	2.788 (4)	127
$O2-H2A \cdots Cl1^{iii}$	0.75 (6)	2.37 (6)	3.078 (4)	158 (6)
$C9-H9A \cdots Cl1$	0.96	2.49	3.275 (4)	139
$C3-H3A \cdots Cl1^{iv}$	0.93	2.72	3.387 (4)	130

Symmetry codes: (i) $-x + 1, -y + 2, -z + 2$; (ii) $x - 1, y, z$; (iii) $x + \frac{1}{2}, -y + \frac{3}{2}, z + \frac{1}{2}$; (iv) $-x, -y + 2, -z + 1$.

Data collection: *CrystalClear* (Rigaku, 2005); cell refinement: *CrystalClear*; data reduction: *CrystalClear*; program(s) used to solve structure: *SHELXS97* (Sheldrick, 2008); program(s) used to refine structure: *SHELXL97* (Sheldrick, 2008); molecular graphics: *SHELXTL* (Sheldrick, 2008); software used to prepare material for publication: *SHELXL97*.

Supplementary data and figures for this paper are available from the IUCr electronic archives (Reference: SG2256).

References

- Bayot, D., Degand, M., Tinant, B. & Devillers, M. (2006). *Inorg. Chem. Commun.* **359**, 1390–1394.
Chen, K., Zhang, Y.-L., Feng, M.-Q. & Liu, C.-H. (2007). *Acta Cryst.* **E63**, m2033.
Rigaku (2005). *CrystalClear*. Rigaku Corporation, Tokyo, Japan.
Sheldrick, G. M. (2008). *Acta Cryst.* **A64**, 112–122.
Sun, Y., Jiang, X.-D. & Li, X.-B. (2008). *Acta Cryst.* **E64**, m801.
Wu, H., Dong, X.-W., Liu, H.-Y. & Ma, J.-F. (2006). *Acta Cryst.* **E62**, m281–m282.

supporting information

Acta Cryst. (2008). E64, m1262 [doi:10.1107/S1600536808028687]

Bis[μ -3-(2-hydroxyethyl)-2-methyl-4-oxo-4*H*-pyrido[1,2-*a*]pyrimidin-9-olato- κ^3 N,O:O]bis[aquachloridocopper(II)]

Ying Deng, Zhong-Shu Li and Bai-Wang Sun

S1. Comment

In the past decade, much attention has been paid to the design and synthesis of self-assembling systems with organic ligands containing N and O donors (Bayot *et al.*, 2006; Chen *et al.*, 2007). Quinolin-8-ol is one such ligand and several crystal structures of complexes containing it have been reported (Wu *et al.*, 2006). Our group has recently reported a new manganese compound with this 3-(2-hydroxyethyl)-2-methyl-4-oxopyrido[1,2-*a*]pyrimidin-9-olate ligands (Sun *et al.*, 2008). We report here the synthesis and crystal structure of the title complex, (I) (Fig. 1). In (I), each Cu(II) ion has a slightly distorted trigonal-bipyramidal geometry and is coordinated by one N atoms and one O atom from one 3-(2-hydroxyethyl)-2-methyl-4-oxopyrido[1,2-*a*]pyrimidin-9-olate ligand, the another O atom of the second 3-(2-hydroxyethyl)-2-methyl-4-oxopyrido[1,2-*a*]pyrimidin-9-olate ligand, together with one water molecule and one Cl atom (Fig. 1). The bond lengths and angles are shown in Table 1. In the crystal structure, the intermolecular O—H \cdots O hydrogen bonds connect the molecules of (I) into a two-dimensional layer along the [010] axis, Fig. 2. Two neighboring net framework layers are interconnected through intermolecular C—H \cdots Cl, O—H \cdots Cl hydrogen bonds forming a three-dimensionall framework along the [100] axis, Fig. 3, Table 2.

S2. Experimental

All chemicals used (reagent grade) were commercially available. a aqueous solution (5 ml) of CuCl₂ (28 mg, 0.1 mmol) was added with constant stirring to a ethanol solution (10 ml) containing 3-(2-hydroxyethyl)-2-methyl-9-hydroxy-lpyrido[1,2-*a*] pyrimidin-4-one (22 mg, 0.1 mmol) then filtered off. After a few days, colorless well shaped single crystals in the form of prisms deposited in the other liquid. They were separated off, washed with cold ethanol and dried in air at room temperature.

S3. Refinement

H atoms bound to carbon were included in calculated positions and treated in the subsequent refinement as riding atoms, with C—H = 0.94 Å and $U_{\text{iso}}(\text{H}) = 1.2U_{\text{eq}}(\text{C})$. The H of hydroxyl and water were refined independently with isotropic displacement parameters.

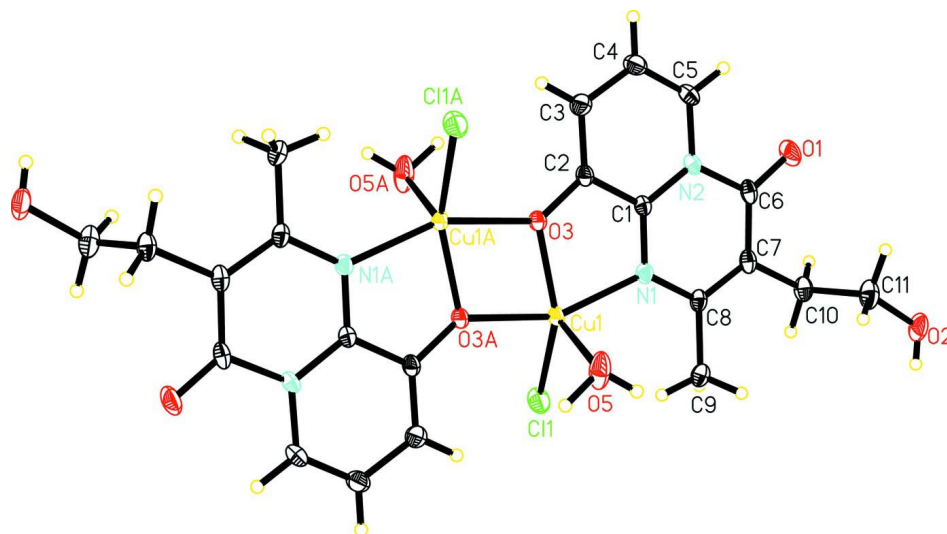


Figure 1

The molecular structure of the title compound with the atom-numbering scheme and all hydrogen atoms. Displacement ellipsoids are drawn at the 30% probability level.

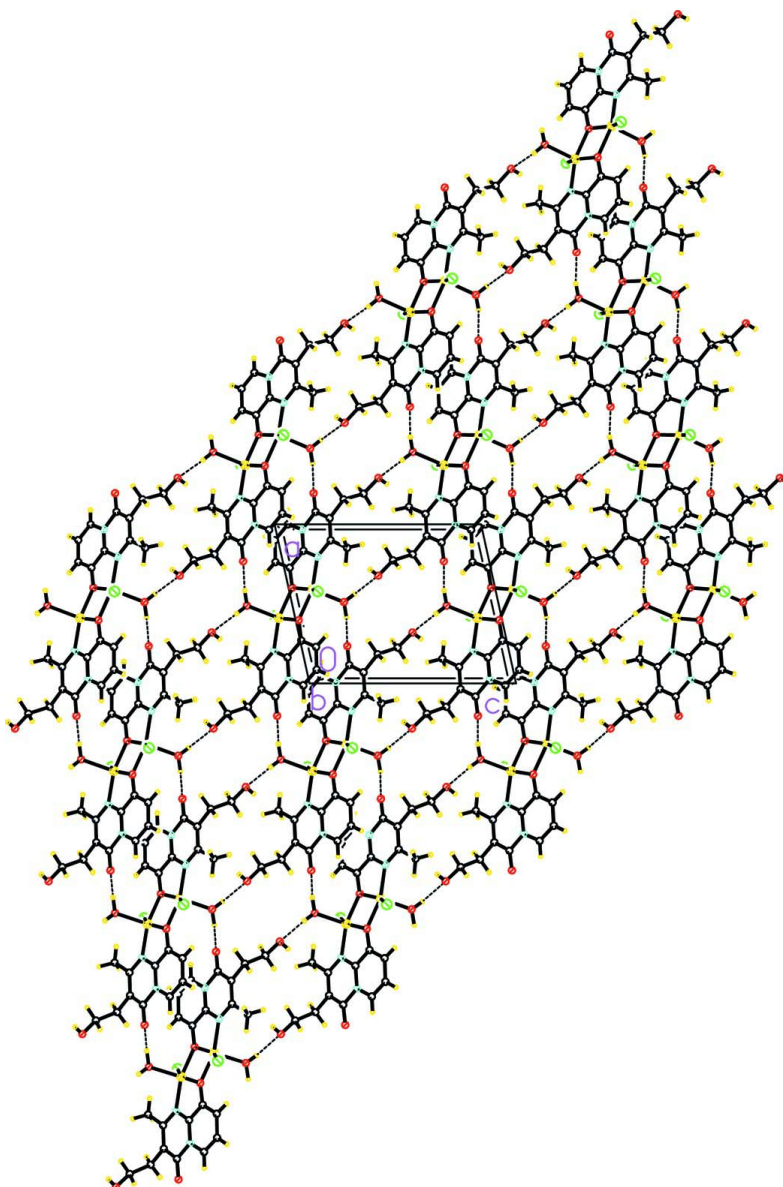
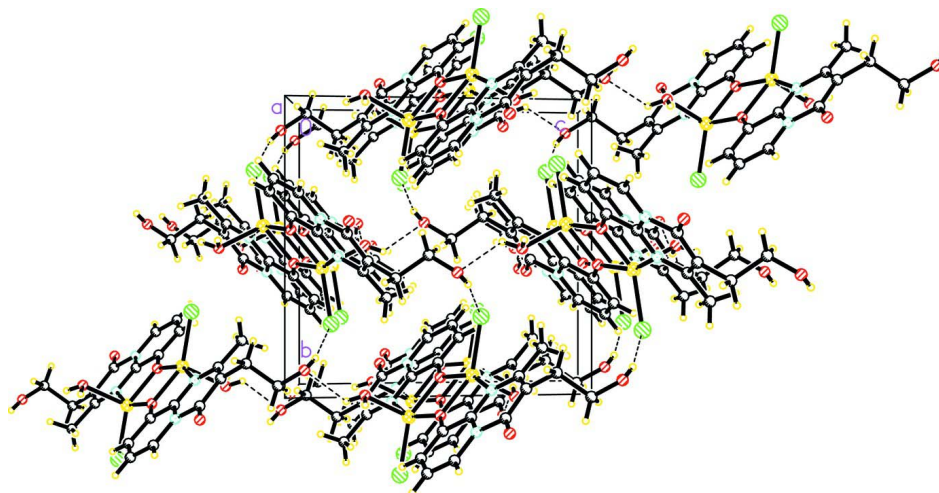


Figure 2

Two-dimensional net framework of the title compound viewed along b axis. Hydrogen bonds are shown as dashed lines. Displacement ellipsoids are drawn at the 30% probability level.

**Figure 3**

Three-dimensional net framework of the title compound viewed along a axis. Hydrogen bonds are shown as dashed lines. Displacement ellipsoids are drawn at the 30% probability level.

Bis[μ -3-(2-hydroxyethyl)-2-methyl-4-oxo-4*H*-pyrido[1,2-*a*]pyrimidin-9-olato- κ^3 N,O:O]bis[aquachloridocopper(II)]

Crystal data

[Cu₂(C₁₁H₁₁N₂O₂)₂Cl₂(H₂O)₂]

$M_r = 672.45$

Monoclinic, $P2_1/n$

Hall symbol: -P 2yn

$a = 9.391$ (3) Å

$b = 11.322$ (3) Å

$c = 11.905$ (4) Å

$\beta = 102.414$ (18)°

$V = 1236.2$ (6) Å³

$Z = 2$

$F(000) = 684$

$D_x = 1.807$ Mg m⁻³

Mo $K\alpha$ radiation, $\lambda = 0.71073$ Å

Cell parameters from 2976 reflections

$\theta = 2.5$ – 27.5°

$\mu = 1.99$ mm⁻¹

$T = 293$ K

Prism, colorless

$0.25 \times 0.12 \times 0.08$ mm

Data collection

Rigaku SCXmini
diffractometer

Radiation source: fine-focus sealed tube

Graphite monochromator

Detector resolution: 8.192 pixels mm⁻¹

ω scans

Absorption correction: multi-scan
(*CrystalClear*; Rigaku, 2005)

$T_{\min} = 0.890$, $T_{\max} = 1.000$

12472 measured reflections

2826 independent reflections

2249 reflections with $I > 2\sigma(I)$

$R_{\text{int}} = 0.056$

$\theta_{\max} = 27.5^\circ$, $\theta_{\min} = 2.5^\circ$

$h = -12 \rightarrow 12$

$k = -14 \rightarrow 14$

$l = -15 \rightarrow 15$

Refinement

Refinement on F^2

Least-squares matrix: full

$R[F^2 > 2\sigma(F^2)] = 0.045$

$wR(F^2) = 0.115$

$S = 1.02$

2826 reflections

176 parameters

0 restraints

Primary atom site location: structure-invariant
direct methods

Secondary atom site location: difference Fourier
map

Hydrogen site location: inferred from
neighbouring sites

H atoms treated by a mixture of independent
and constrained refinement
 $w = 1/[\sigma^2(F_o^2) + (0.059P)^2 + 0.8671P]$
where $P = (F_o^2 + 2F_c^2)/3$

$$\begin{aligned}(\Delta/\sigma)_{\max} &= 0.001 \\ \Delta\rho_{\max} &= 0.49 \text{ e } \text{\AA}^{-3} \\ \Delta\rho_{\min} &= -0.47 \text{ e } \text{\AA}^{-3}\end{aligned}$$

Special details

Geometry. All e.s.d.'s (except the e.s.d. in the dihedral angle between two l.s. planes) are estimated using the full covariance matrix. The cell e.s.d.'s are taken into account individually in the estimation of e.s.d.'s in distances, angles and torsion angles; correlations between e.s.d.'s in cell parameters are only used when they are defined by crystal symmetry. An approximate (isotropic) treatment of cell e.s.d.'s is used for estimating e.s.d.'s involving l.s. planes.

Refinement. Refinement of F^2 against ALL reflections. The weighted R -factor wR and goodness of fit S are based on F^2 , conventional R -factors R are based on F , with F set to zero for negative F^2 . The threshold expression of $F^2 > \sigma(F^2)$ is used only for calculating R -factors(gt) *etc.* and is not relevant to the choice of reflections for refinement. R -factors based on F^2 are statistically about twice as large as those based on F , and R -factors based on ALL data will be even larger.

Fractional atomic coordinates and isotropic or equivalent isotropic displacement parameters (\AA^2)

	<i>x</i>	<i>y</i>	<i>z</i>	$U_{\text{iso}}^*/U_{\text{eq}}$
Cu1	0.09275 (4)	0.92674 (4)	0.60256 (3)	0.02472 (15)
C1	0.3469 (3)	1.0520 (3)	0.5971 (3)	0.0230 (7)
C2	0.2373 (4)	1.1028 (3)	0.5076 (3)	0.0241 (7)
C3	0.2761 (4)	1.1877 (3)	0.4388 (3)	0.0315 (8)
H3A	0.2069	1.2198	0.3788	0.038*
C4	0.4213 (4)	1.2264 (3)	0.4592 (3)	0.0335 (8)
H4A	0.4474	1.2855	0.4133	0.040*
C5	0.5234 (4)	1.1795 (3)	0.5441 (3)	0.0309 (8)
H5A	0.6190	1.2067	0.5566	0.037*
C6	0.6009 (4)	1.0432 (3)	0.7013 (3)	0.0294 (8)
C7	0.5562 (4)	0.9521 (3)	0.7664 (3)	0.0284 (8)
C8	0.4116 (4)	0.9186 (3)	0.7479 (3)	0.0259 (7)
C9	0.3610 (4)	0.8284 (3)	0.8226 (3)	0.0342 (9)
H9A	0.2576	0.8176	0.7978	0.051*
H9B	0.3833	0.8550	0.9010	0.051*
H9C	0.4097	0.7548	0.8169	0.051*
C10	0.6746 (4)	0.8972 (3)	0.8572 (3)	0.0319 (8)
H10A	0.6415	0.8209	0.8786	0.038*
H10B	0.7601	0.8841	0.8254	0.038*
C11	0.7161 (5)	0.9729 (4)	0.9631 (3)	0.0421 (10)
H11A	0.7600	1.0453	0.9432	0.051*
H11B	0.6285	0.9939	0.9893	0.051*
O1	0.7242 (3)	1.0832 (2)	0.7112 (3)	0.0412 (7)
O2	0.8149 (3)	0.9165 (3)	1.0542 (3)	0.0441 (8)
O3	0.1054 (2)	1.0586 (2)	0.4999 (2)	0.0313 (6)
O5	0.0115 (3)	1.0044 (3)	0.7446 (2)	0.0542 (9)
H5C	0.0633	0.9835	0.8059	0.081*
H5D	-0.0866	0.9780	0.7408	0.081*
N1	0.3065 (3)	0.9674 (2)	0.6621 (2)	0.0244 (6)
N2	0.4871 (3)	1.0915 (2)	0.6127 (2)	0.0253 (6)
Cl1	0.07956 (10)	0.73242 (8)	0.63230 (9)	0.0408 (3)

H2A 0.775 (6) 0.878 (5) 1.088 (5) 0.07 (2)*

Atomic displacement parameters (Å²)

	U^{11}	U^{22}	U^{33}	U^{12}	U^{13}	U^{23}
Cu1	0.0176 (2)	0.0284 (2)	0.0255 (2)	-0.00189 (17)	-0.00112 (16)	0.00366 (16)
C1	0.0188 (16)	0.0241 (16)	0.0247 (17)	-0.0006 (13)	0.0013 (13)	-0.0017 (13)
C2	0.0168 (15)	0.0286 (17)	0.0260 (17)	0.0011 (13)	0.0022 (13)	-0.0013 (13)
C3	0.0283 (18)	0.0332 (19)	0.032 (2)	0.0011 (16)	0.0041 (15)	0.0050 (15)
C4	0.0291 (18)	0.032 (2)	0.040 (2)	-0.0036 (16)	0.0079 (16)	0.0057 (16)
C5	0.0222 (17)	0.0316 (19)	0.039 (2)	-0.0077 (15)	0.0074 (15)	-0.0011 (15)
C6	0.0162 (16)	0.0350 (19)	0.0337 (19)	0.0002 (14)	-0.0021 (14)	-0.0057 (15)
C7	0.0195 (16)	0.0326 (19)	0.0299 (18)	0.0024 (14)	-0.0019 (14)	-0.0050 (14)
C8	0.0214 (16)	0.0276 (17)	0.0253 (17)	0.0036 (14)	-0.0025 (13)	-0.0005 (13)
C9	0.0294 (19)	0.041 (2)	0.0278 (19)	0.0015 (16)	-0.0038 (15)	0.0064 (15)
C10	0.0212 (17)	0.035 (2)	0.035 (2)	0.0064 (15)	-0.0023 (15)	-0.0025 (15)
C11	0.037 (2)	0.041 (2)	0.040 (2)	0.0059 (18)	-0.0092 (17)	-0.0046 (18)
O1	0.0170 (12)	0.0495 (17)	0.0534 (18)	-0.0039 (12)	-0.0007 (12)	0.0014 (13)
O2	0.0312 (16)	0.061 (2)	0.0326 (16)	0.0038 (15)	-0.0087 (13)	0.0010 (14)
O3	0.0160 (11)	0.0413 (15)	0.0321 (14)	-0.0044 (10)	-0.0046 (10)	0.0130 (11)
O5	0.0263 (14)	0.096 (3)	0.0377 (16)	0.0102 (17)	0.0005 (12)	-0.0210 (17)
N1	0.0200 (14)	0.0247 (14)	0.0264 (15)	0.0009 (11)	0.0005 (11)	0.0007 (11)
N2	0.0162 (13)	0.0282 (15)	0.0308 (16)	-0.0025 (11)	0.0039 (11)	-0.0015 (12)
Cl1	0.0355 (5)	0.0293 (5)	0.0518 (6)	-0.0015 (4)	-0.0037 (4)	0.0049 (4)

Geometric parameters (Å, °)

Cu1—O3	1.949 (2)	C6—N2	1.438 (4)
Cu1—O3 ⁱ	2.001 (2)	C7—C8	1.382 (5)
Cu1—N1	2.033 (3)	C7—C10	1.508 (5)
Cu1—O5	2.184 (3)	C8—N1	1.375 (4)
Cu1—Cl1	2.2361 (11)	C8—C9	1.496 (5)
Cu1—Cl1	2.2361 (11)	C9—H9A	0.9600
C1—N1	1.336 (4)	C9—H9B	0.9600
C1—N2	1.365 (4)	C9—H9C	0.9600
C1—C2	1.434 (5)	C10—C11	1.505 (5)
C2—O3	1.320 (4)	C10—H10A	0.9700
C2—C3	1.363 (5)	C10—H10B	0.9700
C3—C4	1.403 (5)	C11—O2	1.419 (5)
C3—H3A	0.9300	C11—H11A	0.9700
C4—C5	1.344 (5)	C11—H11B	0.9700
C4—H4A	0.9300	O2—H2A	0.75 (6)
C5—N2	1.377 (4)	O3—Cu1 ⁱ	2.001 (2)
C5—H5A	0.9300	O5—H5C	0.8200
C6—O1	1.225 (4)	O5—H5D	0.9599
C6—C7	1.407 (5)	Cl1—Cl1	0.000 (3)
O3—Cu1—O3 ⁱ	74.24 (11)	N1—C8—C7	122.1 (3)

O3—Cu1—N1	81.74 (10)	N1—C8—C9	116.6 (3)
O3 ⁱ —Cu1—N1	155.95 (11)	C7—C8—C9	121.3 (3)
O3—Cu1—O5	104.82 (13)	C8—C9—H9A	109.5
O3 ⁱ —Cu1—O5	90.24 (11)	C8—C9—H9B	109.5
N1—Cu1—O5	97.00 (11)	H9A—C9—H9B	109.5
O3—Cu1—C11	149.96 (9)	C8—C9—H9C	109.5
O3 ⁱ —Cu1—C11	95.88 (7)	H9A—C9—H9C	109.5
N1—Cu1—C11	104.60 (8)	H9B—C9—H9C	109.5
O5—Cu1—C11	103.49 (10)	C11—C10—C7	112.6 (3)
O3—Cu1—C11	149.96 (9)	C11—C10—H10A	109.1
O3 ⁱ —Cu1—C11	95.88 (7)	C7—C10—H10A	109.1
N1—Cu1—C11	104.60 (8)	C11—C10—H10B	109.1
O5—Cu1—C11	103.49 (10)	C7—C10—H10B	109.1
C11—Cu1—C11	0.00 (7)	H10A—C10—H10B	107.8
N1—C1—N2	122.8 (3)	O2—C11—C10	113.2 (3)
N1—C1—C2	118.1 (3)	O2—C11—H11A	108.9
N2—C1—C2	119.1 (3)	C10—C11—H11A	108.9
O3—C2—C3	126.4 (3)	O2—C11—H11B	108.9
O3—C2—C1	114.4 (3)	C10—C11—H11B	108.9
C3—C2—C1	119.2 (3)	H11A—C11—H11B	107.8
C2—C3—C4	119.5 (3)	C11—O2—H2A	111 (5)
C2—C3—H3A	120.3	C2—O3—Cu1	115.4 (2)
C4—C3—H3A	120.3	C2—O3—Cu1 ⁱ	138.3 (2)
C5—C4—C3	121.1 (3)	Cu1—O3—Cu1 ⁱ	105.76 (11)
C5—C4—H4A	119.4	Cu1—O5—H5C	109.5
C3—C4—H4A	119.4	Cu1—O5—H5D	109.3
C4—C5—N2	120.3 (3)	H5C—O5—H5D	109.3
C4—C5—H5A	119.8	C1—N1—C8	118.1 (3)
N2—C5—H5A	119.8	C1—N1—Cu1	110.0 (2)
O1—C6—C7	127.3 (3)	C8—N1—Cu1	131.7 (2)
O1—C6—N2	117.9 (3)	C1—N2—C5	120.7 (3)
C7—C6—N2	114.8 (3)	C1—N2—C6	121.2 (3)
C8—C7—C6	120.9 (3)	C5—N2—C6	118.1 (3)
C8—C7—C10	123.3 (3)	C11—C11—Cu1	0 (10)
C6—C7—C10	115.9 (3)		
N1—C1—C2—O3	-0.1 (5)	N2—C1—N1—C8	-0.2 (5)
N2—C1—C2—O3	-179.9 (3)	C2—C1—N1—C8	180.0 (3)
N1—C1—C2—C3	-178.9 (3)	N2—C1—N1—Cu1	-175.7 (3)
N2—C1—C2—C3	1.2 (5)	C2—C1—N1—Cu1	4.4 (4)
O3—C2—C3—C4	179.3 (3)	C7—C8—N1—C1	-1.7 (5)
C1—C2—C3—C4	-2.1 (5)	C9—C8—N1—C1	177.1 (3)
C2—C3—C4—C5	1.3 (6)	C7—C8—N1—Cu1	172.7 (3)
C3—C4—C5—N2	0.4 (6)	C9—C8—N1—Cu1	-8.5 (5)
O1—C6—C7—C8	177.8 (4)	O3—Cu1—N1—C1	-5.3 (2)
N2—C6—C7—C8	-3.3 (5)	O3 ⁱ —Cu1—N1—C1	-2.7 (4)
O1—C6—C7—C10	-0.8 (6)	O5—Cu1—N1—C1	-109.3 (2)
N2—C6—C7—C10	178.0 (3)	C11—Cu1—N1—C1	144.7 (2)

C6—C7—C8—N1	3.5 (5)	Cl1—Cu1—N1—C1	144.7 (2)
C10—C7—C8—N1	-177.9 (3)	O3—Cu1—N1—C8	-180.0 (3)
C6—C7—C8—C9	-175.2 (3)	O3 ⁱ —Cu1—N1—C8	-177.5 (3)
C10—C7—C8—C9	3.4 (5)	O5—Cu1—N1—C8	76.0 (3)
C8—C7—C10—C11	-101.0 (4)	Cl1—Cu1—N1—C8	-30.0 (3)
C6—C7—C10—C11	77.6 (4)	Cl1—Cu1—N1—C8	-30.0 (3)
C7—C10—C11—O2	173.1 (3)	N1—C1—N2—C5	-179.5 (3)
C3—C2—O3—Cu1	174.0 (3)	C2—C1—N2—C5	0.4 (5)
C1—C2—O3—Cu1	-4.7 (4)	N1—C1—N2—C6	0.1 (5)
C3—C2—O3—Cu1 ⁱ	3.6 (6)	C2—C1—N2—C6	180.0 (3)
C1—C2—O3—Cu1 ⁱ	-175.1 (2)	C4—C5—N2—C1	-1.2 (5)
O3 ⁱ —Cu1—O3—C2	-173.4 (3)	C4—C5—N2—C6	179.2 (3)
N1—Cu1—O3—C2	5.6 (2)	O1—C6—N2—C1	-179.5 (3)
O5—Cu1—O3—C2	100.7 (2)	C7—C6—N2—C1	1.6 (5)
Cl1—Cu1—O3—C2	-99.4 (3)	O1—C6—N2—C5	0.1 (5)
Cl1—Cu1—O3—C2	-99.4 (3)	C7—C6—N2—C5	-178.8 (3)
O3 ⁱ —Cu1—O3—Cu1 ⁱ	0.0	O3—Cu1—Cl1—Cl1	0.0 (5)
N1—Cu1—O3—Cu1 ⁱ	178.93 (14)	O3 ⁱ —Cu1—Cl1—Cl1	0.0 (5)
O5—Cu1—O3—Cu1 ⁱ	-85.97 (13)	N1—Cu1—Cl1—Cl1	0.0 (5)
Cl1—Cu1—O3—Cu1 ⁱ	74.01 (18)	O5—Cu1—Cl1—Cl1	0.0 (5)
Cl1—Cu1—O3—Cu1 ⁱ	74.01 (18)		

Symmetry code: (i) $-x, -y+2, -z+1$.

Hydrogen-bond geometry ($\text{\AA}, ^\circ$)

$D-H\cdots A$	$D-H$	$H\cdots A$	$D\cdots A$	$D-H\cdots A$
O5—H5C ⁱⁱ —O2 ⁱⁱ	0.82	2.13	2.742 (4)	131
O5—H5D ⁱⁱⁱ —O1 ⁱⁱⁱ	0.96	2.11	2.788 (4)	127
O2—H2A ^{iv} —Cl1 ^{iv}	0.75 (6)	2.37 (6)	3.078 (4)	158 (6)
C9—H9A ⁱ —Cl1	0.96	2.49	3.275 (4)	139
C3—H3A ⁱ —Cl1 ⁱ	0.93	2.72	3.387 (4)	130

Symmetry codes: (i) $-x, -y+2, -z+1$; (ii) $-x+1, -y+2, -z+2$; (iii) $x-1, y, z$; (iv) $x+1/2, -y+3/2, z+1/2$.