

Acta Crystallographica Section E

## Structure Reports

Online

ISSN 1600-5368

1-(2-Pyridyl)-*N,N'*-dipyrimidin-2-yl-methanedi-amineMasoumeh Tabatabaee,<sup>a\*</sup> Fatemeh Hakimi,<sup>b</sup> Mina Roshani,<sup>b</sup> Mohammad Mirjalili<sup>c</sup> and Hamid Reza Kavasi<sup>d</sup><sup>a</sup>Department of Chemistry, Islamic Azad University, Yazd Branch, Yazd, Iran,<sup>b</sup>Department of Chemistry, Islamic Azad University, Mashhad Branch, Mashhad,Iran, <sup>c</sup>Department of Textile Engineering, Yazd, Iran, and <sup>d</sup>Department of Chemistry, Shahid Beheshti University, Tehran, Iran

Correspondence e-mail: tabatabaee45m@yahoo.com

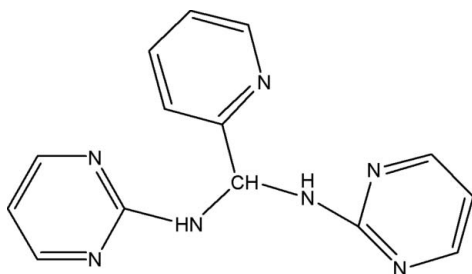
Received 16 September 2008; accepted 8 October 2008

Key indicators: single-crystal X-ray study;  $T = 296$  K; mean  $\sigma(\text{C}-\text{C}) = 0.004$  Å;  $R$  factor = 0.058;  $wR$  factor = 0.140; data-to-parameter ratio = 12.4.

In the title compound,  $\text{C}_{14}\text{H}_{13}\text{N}_7$ , intermolecular  $\text{N}-\text{H}\cdots\text{N}$  and  $\text{C}-\text{H}\cdots\text{N}$  hydrogen bonds link the molecules into infinite one-dimensional chains along (100). A  $\text{C}-\text{H}\cdots\pi$  interaction also occurs in the crystal.

## Related literature

For the biological activity of pyrimidine derivatives, see: Onal & Altral (1999); Ponticelli & Spanu (1999). For their uses in coordination chemistry, see: Prince *et al.* (2003); Lee *et al.* (2003); Masaki *et al.* (2002). For studies of the reactions of heterocyclic amines with aromatic aldehyde to prepare new ligands, see: Tabatabaee *et al.* (2006, 2007a,b, 2008).



## Experimental

## Crystal data

$\text{C}_{14}\text{H}_{13}\text{N}_7$   
 $M_r = 279.31$   
 Monoclinic,  $P2_1/n$   
 $a = 9.5781$  (19) Å  
 $b = 9.3543$  (16) Å  
 $c = 15.975$  (4) Å  
 $\beta = 97.521$  (17)°

$V = 1419.0$  (5) Å<sup>3</sup>  
 $Z = 4$   
 Mo  $K\alpha$  radiation  
 $\mu = 0.09$  mm<sup>-1</sup>  
 $T = 296$  K  
 $0.45 \times 0.20 \times 0.05$  mm

## Data collection

Stoe IPDS-II diffractometer  
 Absorption correction: numerical  
 [shape of crystal determined  
 optically; *X-SHAPE* and  
*X-RED32* (Stoe & Cie, 2005)]  
 $T_{\min} = 0.970$ ,  $T_{\max} = 0.998$

12281 measured reflections  
 2997 independent reflections  
 2443 reflections with  $I > 2\sigma(I)$   
 $R_{\text{int}} = 0.032$

## Refinement

$R[F^2 > 2\sigma(F^2)] = 0.058$   
 $wR(F^2) = 0.140$   
 $S = 1.12$   
 2997 reflections

242 parameters  
 All H-atom parameters refined  
 $\Delta\rho_{\text{max}} = 0.15$  e Å<sup>-3</sup>  
 $\Delta\rho_{\text{min}} = -0.16$  e Å<sup>-3</sup>

Table 1

Hydrogen-bond geometry (Å, °).

Cg1 is the centroid of the N6/N7/C11–C14 ring.

$D-\text{H}\cdots A$	$D-\text{H}$	$\text{H}\cdots A$	$D\cdots A$	$D-\text{H}\cdots A$
$\text{N2}-\text{H2B}\cdots\text{N4}^i$	0.885 (19)	2.181 (19)	3.064 (2)	175.3 (19)
$\text{N5}-\text{H5B}\cdots\text{N7}^{ii}$	0.787 (19)	2.259 (19)	3.042 (3)	174 (2)
$\text{C12}-\text{H12}\cdots\text{N3}^{iii}$	1.00 (3)	2.57 (2)	3.304 (3)	130.4 (15)
$\text{C9}-\text{H9}\cdots\text{Cg1}^{iv}$	0.99 (3)	2.62 (3)	3.532 (3)	154 (3)

Symmetry codes: (i)  $-x + 2, -y + 1, -z$ ; (ii)  $-x + 1, -y + 1, -z$ ; (iii)  $-x + 1, -y + 2, -z$ ; (iv)  $x + \frac{1}{2}, -y + \frac{3}{2}, z - \frac{1}{2}$ .

Data collection: *X-AREA* (Stoe & Cie, 2005); cell refinement: *X-AREA*; data reduction: *X-RED32* (Stoe & Cie, 2005); program(s) used to solve structure: *SHELXS97* (Sheldrick, 2008); program(s) used to refine structure: *SHELXL97* (Sheldrick, 2008); molecular graphics: *ORTEP-3 for Windows* (Farrugia, 1997); software used to prepare material for publication: *WinGX* (Farrugia, 1999).

Supplementary data and figures for this paper are available from the IUCr electronic archives (Reference: BQ2098).

## References

- Farrugia, L. J. (1997). *J. Appl. Cryst.* **30**, 565.  
 Farrugia, L. J. (1999). *J. Appl. Cryst.* **32**, 837–838.  
 Lee, J. H., Lewos, R. D., Mendes, J., Turnbull, M. M. & Awadi, F. F. (2003). *J. Coord. Chem.* **56**, 1425–1442.  
 Masaki, M. E., Prince, B. J. & Turnbull, M. M. (2002). *J. Coord. Chem.* **55**, 1337–1351.  
 Onal, Z. & Altral, B. (1999). *Turk. J. Chem.* **23**, 401–405.  
 Ponticelli, G. & Spanu, A. (1999). *Transition Met. Chem.* **24**, 370–372.  
 Prince, B. J., Turnbull, M. M. & Willett, R. D. (2003). *J. Coord. Chem.* **56**, 441–452.  
 Sheldrick, G. M. (2008). *Acta Cryst.* **A64**, 112–122.  
 Stoe & Cie (2005). *X-AREA*, *X-RED32* and *X-SHAPE*. Stoe & Cie, Darmstadt, Germany.  
 Tabatabaee, M., Ghassemzadeh, M., Dehghan, A. R., Khavasi, H. R. & Heravi, M. M. (2007a). *Acta Cryst.* **E63**, o42–o43.  
 Tabatabaee, M., Ghassemzadeh, M. & Soleimani, N. (2008). *Anal. Sci.* **24**, x173–x174.  
 Tabatabaee, M., Ghassemzadeh, M., Zarabi, B., Heravi, M. M., Anary-Abbasinejad, M. & Neumüller, B. (2007b). *Phosphorus Sulfur Silicon Relat. Elem.* **182**, 677–686.  
 Tabatabaee, M., Ghassemzadeh, M., Zarabi, B. & Neumüller, B. (2006). *Z. Naturforsch. Teil B*, **61**, 1421–1425.

## supporting information

*Acta Cryst.* (2008). E64, o2112 [doi:10.1107/S1600536808032583]

**1-(2-Pyridyl)-*N,N'*-dipyrimidin-2-ylmethanedia mine**

**Masoumeh Tabatabaee, Fatemeh Hakimi, Mina Roshani, Mohammad Mirjalili and Hamid Reza Kavasi**

**S1. Comment**

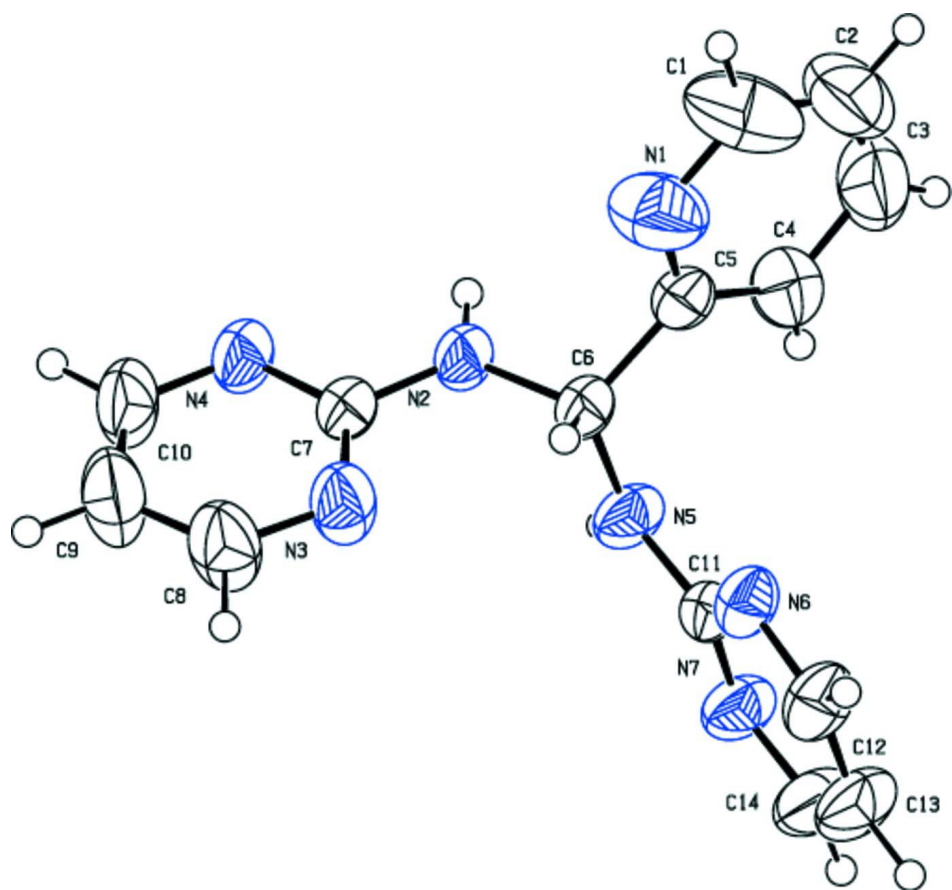
Pyrimidines derivatives possess remarkable biological activity and have been widely used in medicinal and industrial applications (Onal & Altral, 1999; Ponticelli *et al.* 1999). Moreover amino pyrimidine derivatives find use in coordination chemistry (Prince *et al.* 2003; Masaki *et al.* 2002; Lee *et al.* 2003). In continuation of our recent work on the reactions of heterocyclic amines with aromatic aldehyde to prepare of new ligands (Tabatabaee *et al.* 2006; Tabatabaee *et al.* 2007a,b; Tabatabaee *et al.* 2008) in this communication, we report, our results on the reaction of 2-aminopyrimidine and 2-pyridinecarbaldehyde. The title compound, C<sub>14</sub>H<sub>13</sub>N<sub>7</sub>, (I), is a new aminoacetal compound obtained from condensation of 2-aminopyrimidine with 2-pyridinecarbaldehyde. The crystal structure of (I) (Fig. 1) shows that one molecule of 2-pyridinecarbaldehyde was reacted with two molecules of 2-aminopyrimidine to form (I). Bond lengths and angles are unexceptional and the molecular structure is stabilized by some intermolecular N—H···N and C—H···N hydrogen-bonds (Table I). In the crystal packing (Fig. 2), molecules are linked into infinite one dimensional chains by hydrogen-bond interactions. A considerable feature of the compound (I) is the presence of C—H··· $\pi$  stacking interactions between C—H groups from one molecule and aromatic pyrimidine ring of adjacent molecule. The C—H··· $\pi$  distance is 2.62 (3) Å for C9—H9···Cg1 (Cg1 is the center of pyrimidine ring), with the angle of 154 (3)° (Fig.3).

**S2. Experimental**

A solution of 2-aminopyrimidine (0.94 g, 1 mmol) in EtOH (15 ml) was treated with 2-pyridinecarbaldehyde (0.107 g, 1 mmol) and the resulting mixture was acidified with 37% hydrochloric acid (0.2 ml). The reaction mixture was refluxed for 8 h. The solid residue was filtered and the filtrate was kept at 293 K. Colorless crystals of the title compound were obtained after a few days (yield 83%).

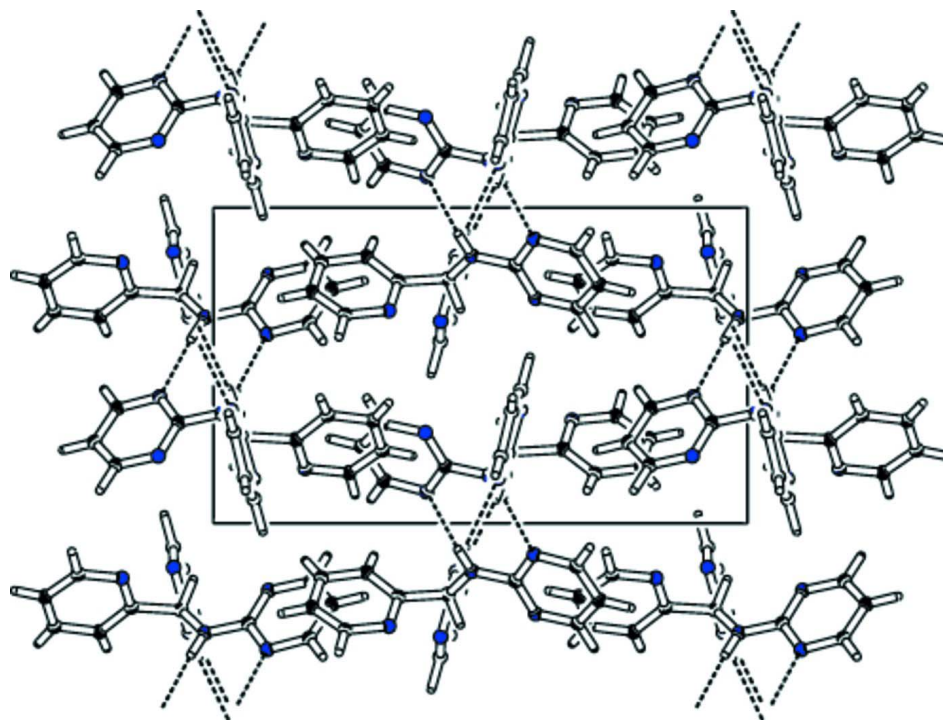
**S3. Refinement**

All of the H atoms were located in a difference synthesis and refined isotropically [aromatic C—H = 0.82 (2)–1.07 (3) Å, tertiary C—H = 0.97 (2) Å and N—H = 0.79 (2)–0.89 (2) Å] and refined isotropically.

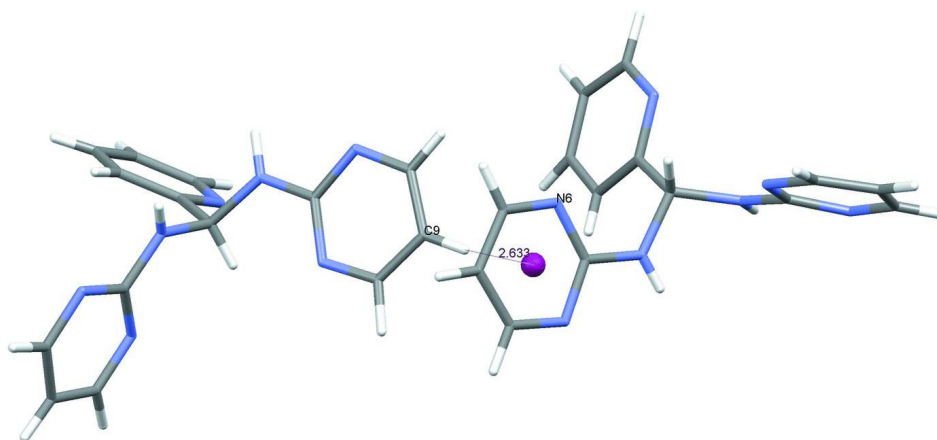


**Figure 1**

The molecular structure of (I). Displacement ellipsoids are drawn at the 50% probability level.

**Figure 2**

Packing diagram of (I), molecules are linked into infinite one dimensional chains by hydrogen-bond interactions (dashed lines).

**Figure 3**

Intermolecular C—H...N interaction between one aromatic pyrimidine ring and adjacent molecule.

### 1-(2-Pyridyl)-N,N'-dipyrimidin-2-ylmethanediamine

#### Crystal data

$C_{14}H_{13}N_7$

$M_r = 279.31$

Monoclinic,  $P2_1/n$

Hall symbol:  $-P\ 2_1n$

$a = 9.5781\ (19)\ \text{\AA}$

$b = 9.3543\ (16)\ \text{\AA}$

$c = 15.975\ (4)\ \text{\AA}$

$\beta = 97.521\ (17)^\circ$

$V = 1419.0\ (5)\ \text{\AA}^3$

$Z = 4$

$F(000) = 584$

$D_x = 1.307\ \text{Mg m}^{-3}$

Mo  $K\alpha$  radiation,  $\lambda = 0.71073 \text{ \AA}$   
 Cell parameters from 2000 reflections  
 $\theta = 2.4\text{--}26.8^\circ$   
 $\mu = 0.09 \text{ mm}^{-1}$

$T = 296 \text{ K}$   
 Plate, colorless  
 $0.45 \times 0.20 \times 0.05 \text{ mm}$

*Data collection*

Stoe IPDS-II  
 diffractometer  
 Radiation source: fine-focus sealed tube  
 Graphite monochromator  
 rotation method scans  
 Absorption correction: numerical  
 shape of crystal determined optically (Program?  
 reference?)  
 $T_{\min} = 0.970$ ,  $T_{\max} = 0.998$

12281 measured reflections  
 2997 independent reflections  
 2443 reflections with  $I > 2\sigma(I)$   
 $R_{\text{int}} = 0.032$   
 $\theta_{\max} = 26.8^\circ$ ,  $\theta_{\min} = 2.4^\circ$   
 $h = -12 \rightarrow 12$   
 $k = -11 \rightarrow 11$   
 $l = -20 \rightarrow 17$

*Refinement*

Refinement on  $F^2$   
 Least-squares matrix: full  
 $R[F^2 > 2\sigma(F^2)] = 0.058$   
 $wR(F^2) = 0.140$   
 $S = 1.12$   
 2997 reflections  
 242 parameters  
 0 restraints  
 Primary atom site location: structure-invariant  
 direct methods

Secondary atom site location: difference Fourier  
 map  
 Hydrogen site location: inferred from  
 neighbouring sites  
 All H-atom parameters refined  
 $w = 1/[\sigma^2(F_o^2) + (0.0555P)^2 + 0.3988P]$   
 where  $P = (F_o^2 + 2F_c^2)/3$   
 $(\Delta/\sigma)_{\max} = 0.002$   
 $\Delta\rho_{\max} = 0.15 \text{ e \AA}^{-3}$   
 $\Delta\rho_{\min} = -0.16 \text{ e \AA}^{-3}$

*Special details*

**Geometry.** All e.s.d.'s (except the e.s.d. in the dihedral angle between two l.s. planes) are estimated using the full covariance matrix. The cell e.s.d.'s are taken into account individually in the estimation of e.s.d.'s in distances, angles and torsion angles; correlations between e.s.d.'s in cell parameters are only used when they are defined by crystal symmetry. An approximate (isotropic) treatment of cell e.s.d.'s is used for estimating e.s.d.'s involving l.s. planes.

**Refinement.** Refinement of  $F^2$  against ALL reflections. The weighted  $R$ -factor  $wR$  and goodness of fit  $S$  are based on  $F^2$ , conventional  $R$ -factors  $R$  are based on  $F$ , with  $F$  set to zero for negative  $F^2$ . The threshold expression of  $F^2 > \sigma(F^2)$  is used only for calculating  $R$ -factors(gt) *etc.* and is not relevant to the choice of reflections for refinement.  $R$ -factors based on  $F^2$  are statistically about twice as large as those based on  $F$ , and  $R$ -factors based on ALL data will be even larger.

*Fractional atomic coordinates and isotropic or equivalent isotropic displacement parameters ( $\text{\AA}^2$ )*

	<i>x</i>	<i>y</i>	<i>z</i>	$U_{\text{iso}}^*/U_{\text{eq}}$
C1	0.9822 (4)	0.8397 (4)	0.2536 (3)	0.1170 (12)
H1	1.065 (4)	0.909 (5)	0.265 (3)	0.172 (17)*
C2	0.9364 (4)	0.7672 (5)	0.3161 (2)	0.1087 (12)
H2	0.973 (4)	0.786 (4)	0.372 (3)	0.149 (14)*
C3	0.8303 (4)	0.6738 (5)	0.2982 (2)	0.1054 (12)
H3	0.783 (4)	0.619 (4)	0.328 (3)	0.141 (14)*
C4	0.7696 (3)	0.6561 (3)	0.21369 (16)	0.0746 (7)
H4	0.702 (3)	0.604 (3)	0.2000 (16)	0.074 (8)*
C5	0.82060 (18)	0.7345 (2)	0.15391 (11)	0.0488 (4)
C6	0.76338 (17)	0.7253 (2)	0.06118 (11)	0.0458 (4)
H6	0.7549 (19)	0.821 (2)	0.0380 (12)	0.048 (5)*
C7	0.87637 (17)	0.6815 (2)	-0.06540 (11)	0.0464 (4)

C8	0.8208 (3)	0.8159 (3)	-0.18238 (15)	0.0816 (8)
H8	0.753 (3)	0.896 (3)	-0.2127 (17)	0.098 (8)*
C9	0.9149 (3)	0.7437 (3)	-0.22277 (16)	0.0859 (8)
H9	0.928 (3)	0.768 (3)	-0.2817 (19)	0.106 (9)*
C10	0.9855 (3)	0.6351 (3)	-0.17964 (14)	0.0745 (7)
H10	1.054 (3)	0.577 (3)	-0.2047 (16)	0.086 (7)*
C11	0.50462 (17)	0.72192 (19)	0.05133 (10)	0.0441 (4)
C12	0.3865 (2)	0.9233 (2)	0.07540 (14)	0.0599 (5)
H12	0.394 (2)	1.026 (3)	0.0921 (14)	0.074 (7)*
C13	0.2605 (2)	0.8541 (3)	0.05806 (16)	0.0698 (6)
H13	0.170 (3)	0.897 (3)	0.0602 (16)	0.091 (8)*
C14	0.2664 (2)	0.7119 (3)	0.03806 (16)	0.0681 (6)
H14	0.180 (3)	0.652 (3)	0.0280 (15)	0.078 (7)*
N1	0.9275 (2)	0.8262 (3)	0.17169 (15)	0.0913 (7)
N2	0.86343 (15)	0.65215 (18)	0.01597 (9)	0.0504 (4)
H2B	0.915 (2)	0.583 (2)	0.0422 (13)	0.058 (6)*
N3	0.7991 (2)	0.7869 (2)	-0.10338 (11)	0.0681 (5)
N4	0.96897 (16)	0.59970 (18)	-0.10065 (10)	0.0565 (4)
N5	0.62782 (15)	0.65417 (19)	0.04528 (11)	0.0523 (4)
H5B	0.623 (2)	0.575 (2)	0.0285 (13)	0.055 (6)*
N6	0.51088 (15)	0.85980 (16)	0.07449 (10)	0.0505 (4)
N7	0.38702 (15)	0.64257 (18)	0.03335 (11)	0.0569 (4)

*Atomic displacement parameters (Å<sup>2</sup>)*

	$U^{11}$	$U^{22}$	$U^{33}$	$U^{12}$	$U^{13}$	$U^{23}$
C1	0.116 (3)	0.121 (3)	0.100 (3)	-0.013 (2)	-0.041 (2)	-0.015 (2)
C2	0.116 (3)	0.145 (3)	0.0593 (18)	0.041 (2)	-0.0115 (17)	-0.023 (2)
C3	0.108 (2)	0.148 (3)	0.0659 (18)	0.040 (2)	0.0316 (17)	0.026 (2)
C4	0.0699 (15)	0.0954 (18)	0.0600 (14)	0.0035 (14)	0.0142 (11)	0.0109 (12)
C5	0.0422 (9)	0.0545 (10)	0.0499 (10)	0.0134 (8)	0.0070 (7)	-0.0050 (8)
C6	0.0405 (8)	0.0518 (10)	0.0466 (9)	0.0107 (7)	0.0112 (7)	-0.0019 (8)
C7	0.0407 (8)	0.0538 (10)	0.0455 (9)	0.0083 (7)	0.0090 (7)	-0.0013 (7)
C8	0.1015 (18)	0.0871 (17)	0.0587 (13)	0.0359 (15)	0.0206 (12)	0.0189 (12)
C9	0.112 (2)	0.0959 (19)	0.0560 (13)	0.0323 (16)	0.0355 (13)	0.0144 (12)
C10	0.0840 (15)	0.0874 (16)	0.0574 (13)	0.0288 (13)	0.0289 (11)	-0.0031 (11)
C11	0.0417 (9)	0.0548 (10)	0.0366 (8)	0.0108 (7)	0.0072 (6)	-0.0032 (7)
C12	0.0564 (11)	0.0512 (11)	0.0751 (14)	0.0147 (9)	0.0204 (10)	-0.0017 (10)
C13	0.0472 (11)	0.0715 (14)	0.0916 (16)	0.0217 (10)	0.0126 (10)	-0.0089 (12)
C14	0.0410 (10)	0.0758 (15)	0.0865 (16)	0.0063 (10)	0.0041 (9)	-0.0215 (12)
N1	0.0819 (14)	0.0997 (16)	0.0858 (15)	-0.0169 (13)	-0.0136 (11)	0.0007 (12)
N2	0.0471 (8)	0.0599 (10)	0.0458 (8)	0.0211 (7)	0.0127 (6)	0.0045 (7)
N3	0.0792 (12)	0.0745 (12)	0.0535 (10)	0.0336 (10)	0.0197 (8)	0.0095 (8)
N4	0.0549 (9)	0.0641 (10)	0.0533 (9)	0.0174 (8)	0.0173 (7)	-0.0023 (7)
N5	0.0394 (8)	0.0528 (10)	0.0648 (10)	0.0093 (7)	0.0066 (6)	-0.0165 (8)
N6	0.0480 (8)	0.0486 (8)	0.0575 (9)	0.0088 (7)	0.0162 (7)	-0.0010 (7)
N7	0.0406 (8)	0.0603 (10)	0.0690 (11)	0.0080 (7)	0.0041 (7)	-0.0189 (8)

*Geometric parameters (Å, °)*

C1—C2	1.327 (6)	C8—C9	1.355 (3)
C1—N1	1.350 (4)	C8—H8	1.07 (3)
C1—H1	1.03 (4)	C9—C10	1.357 (4)
C2—C3	1.343 (6)	C9—H9	0.99 (3)
C2—H2	0.93 (4)	C10—N4	1.334 (3)
C3—C4	1.408 (4)	C10—H10	0.98 (3)
C3—H3	0.87 (4)	C11—N6	1.341 (2)
C4—C5	1.346 (3)	C11—N7	1.348 (2)
C4—H4	0.82 (2)	C11—N5	1.354 (2)
C5—N1	1.338 (3)	C12—N6	1.333 (2)
C5—C6	1.513 (3)	C12—C13	1.366 (3)
C6—N2	1.446 (2)	C12—H12	1.00 (2)
C6—N5	1.452 (2)	C13—C14	1.371 (3)
C6—H6	0.97 (2)	C13—H13	0.96 (3)
C7—N3	1.331 (2)	C14—N7	1.335 (2)
C7—N4	1.349 (2)	C14—H14	1.00 (2)
C7—N2	1.350 (2)	N2—H2B	0.89 (2)
C8—N3	1.334 (3)	N5—H5B	0.79 (2)
C2—C1—N1	123.8 (4)	C8—C9—H9	120.8 (17)
C2—C1—H1	121 (2)	C10—C9—H9	122.4 (17)
N1—C1—H1	115 (2)	N4—C10—C9	123.6 (2)
C1—C2—C3	119.2 (3)	N4—C10—H10	114.7 (15)
C1—C2—H2	120 (3)	C9—C10—H10	121.8 (15)
C3—C2—H2	120 (2)	N6—C11—N7	126.46 (15)
C2—C3—C4	119.1 (3)	N6—C11—N5	117.52 (16)
C2—C3—H3	135 (3)	N7—C11—N5	116.02 (16)
C4—C3—H3	106 (3)	N6—C12—C13	123.62 (19)
C5—C4—C3	118.3 (3)	N6—C12—H12	113.6 (13)
C5—C4—H4	118.9 (18)	C13—C12—H12	122.7 (13)
C3—C4—H4	122.7 (18)	C12—C13—C14	116.41 (18)
N1—C5—C4	122.5 (2)	C12—C13—H13	124.8 (16)
N1—C5—C6	114.40 (18)	C14—C13—H13	118.7 (16)
C4—C5—C6	123.1 (2)	N7—C14—C13	123.1 (2)
N2—C6—N5	109.37 (15)	N7—C14—H14	115.2 (14)
N2—C6—C5	109.70 (14)	C13—C14—H14	121.6 (14)
N5—C6—C5	113.47 (15)	C5—N1—C1	117.0 (3)
N2—C6—H6	105.9 (11)	C7—N2—C6	122.37 (15)
N5—C6—H6	109.2 (11)	C7—N2—H2B	119.2 (13)
C5—C6—H6	108.9 (11)	C6—N2—H2B	118.4 (13)
N3—C7—N4	125.93 (16)	C7—N3—C8	115.86 (17)
N3—C7—N2	118.29 (15)	C10—N4—C7	114.85 (17)
N4—C7—N2	115.78 (16)	C11—N5—C6	122.74 (16)
N3—C8—C9	123.0 (2)	C11—N5—H5B	117.0 (15)
N3—C8—H8	114.3 (15)	C6—N5—H5B	120.0 (15)
C9—C8—H8	122.5 (15)	C12—N6—C11	115.09 (17)

C8—C9—C10	116.7 (2)	C14—N7—C11	115.17 (17)
N1—C1—C2—C3	0.4 (6)	N5—C6—N2—C7	85.7 (2)
C1—C2—C3—C4	-0.5 (5)	C5—C6—N2—C7	-149.27 (18)
C2—C3—C4—C5	-0.3 (5)	N4—C7—N3—C8	-2.7 (3)
C3—C4—C5—N1	1.1 (4)	N2—C7—N3—C8	176.9 (2)
C3—C4—C5—C6	-179.6 (2)	C9—C8—N3—C7	0.2 (4)
N1—C5—C6—N2	71.8 (2)	C9—C10—N4—C7	-0.6 (4)
C4—C5—C6—N2	-107.6 (2)	N3—C7—N4—C10	2.9 (3)
N1—C5—C6—N5	-165.58 (18)	N2—C7—N4—C10	-176.74 (19)
C4—C5—C6—N5	15.0 (3)	N6—C11—N5—C6	-1.2 (3)
N3—C8—C9—C10	1.8 (5)	N7—C11—N5—C6	178.94 (16)
C8—C9—C10—N4	-1.6 (5)	N2—C6—N5—C11	-154.94 (16)
N6—C12—C13—C14	-0.7 (4)	C5—C6—N5—C11	82.2 (2)
C12—C13—C14—N7	-1.5 (4)	C13—C12—N6—C11	2.9 (3)
C4—C5—N1—C1	-1.1 (4)	N7—C11—N6—C12	-3.3 (3)
C6—C5—N1—C1	179.5 (3)	N5—C11—N6—C12	176.80 (17)
C2—C1—N1—C5	0.4 (5)	C13—C14—N7—C11	1.2 (3)
N3—C7—N2—C6	3.6 (3)	N6—C11—N7—C14	1.4 (3)
N4—C7—N2—C6	-176.73 (17)	N5—C11—N7—C14	-178.76 (18)

Hydrogen-bond geometry ( $\text{\AA}$ ,  $^\circ$ )

$D-H\cdots A$	$D-H$	$H\cdots A$	$D\cdots A$	$D-H\cdots A$
N2—H2B $\cdots$ N4 <sup>i</sup>	0.885 (19)	2.181 (19)	3.064 (2)	175.3 (19)
N5—H5B $\cdots$ N7 <sup>ii</sup>	0.787 (19)	2.259 (19)	3.042 (3)	174 (2)
C4—H4 $\cdots$ N5	0.82 (3)	2.53 (3)	2.851 (3)	105 (2)
C6—H6 $\cdots$ N3	0.968 (19)	2.373 (19)	2.756 (3)	102.9 (13)
C12—H12 $\cdots$ N3 <sup>iii</sup>	1.00 (3)	2.57 (2)	3.304 (3)	130.4 (15)
C9—H9 $\cdots$ Cg1 <sup>iv</sup>	0.99 (3)	2.62 (3)	3.532 (3)	154 (3)

Symmetry codes: (i)  $-x+2, -y+1, -z$ ; (ii)  $-x+1, -y+1, -z$ ; (iii)  $-x+1, -y+2, -z$ ; (iv)  $x+1/2, -y+3/2, z-1/2$ .