

Acta Crystallographica Section E

Structure Reports

Online

ISSN 1600-5368

5,5'-Diethyl-2,2'-(triazene-1,3-diyl)-di-1,3,4-thiadiazole

Hai-Su Zeng, Lu-Na Han, Si-shun Kang, Hai-lin Li and Hai-bo Wang*

College of Science, Nanjing University of Technology, Ximofan Road No. 5
Nanjing, Nanjing 210009, People's Republic of China
Correspondence e-mail: wanghaibo@njut.edu.cn

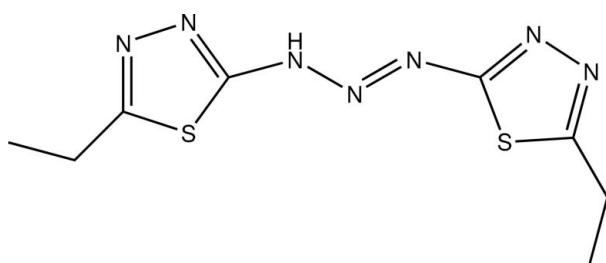
Received 14 October 2008; accepted 17 October 2008

Key indicators: single-crystal X-ray study; $T = 294$ K; mean $\sigma(\text{C}-\text{C}) = 0.009$ Å;
 R factor = 0.072; wR factor = 0.178; data-to-parameter ratio = 16.3.

In the molecule of the title compound, $\text{C}_8\text{H}_{11}\text{N}_7\text{S}_2$, the conformation about the $\text{N}=\text{N}$ bond is *trans* and the thiadiazole rings are oriented at a dihedral angle of 2.92 (3)°. In the crystal structure, intermolecular $\text{N}-\text{H}\cdots\text{S}$ hydrogen bonds link the molecules into chains. There are $\pi-\pi$ contacts between the thiadiazole rings [centroid-to-centroid distances = 3.699 (3) and 3.720 (2) Å].

Related literature

For general background, see: Bach *et al.* (1996); Clark & Hester (1991); Taniike *et al.* (1996). For bond-length data, see: Allen *et al.* (1987).



Experimental

Crystal data

$\text{C}_8\text{H}_{11}\text{N}_7\text{S}_2$
 $M_r = 269.36$
Monoclinic, $P2_1/c$

$a = 12.188$ (2) Å
 $b = 9.1460$ (18) Å
 $c = 12.790$ (3) Å

$\beta = 110.99$ (3)°
 $V = 1331.1$ (5) Å³
 $Z = 4$
Mo $K\alpha$ radiation

$\mu = 0.39$ mm⁻¹
 $T = 294$ (2) K
 $0.20 \times 0.10 \times 0.10$ mm

Data collection

Enraf-Nonius CAD-4 diffractometer
Absorption correction: ψ scan (North *et al.*, 1968)
 $T_{\min} = 0.926$, $T_{\max} = 0.962$
2431 measured reflections

2320 independent reflections
1468 reflections with $I > 2\sigma(I)$
 $R_{\text{int}} = 0.0047$
3 standard reflections
frequency: 120 min
intensity decay: none

Refinement

$R[F^2 > 2\sigma(F^2)] = 0.072$
 $wR(F^2) = 0.178$
 $S = 1.00$
2320 reflections

142 parameters
H-atom parameters constrained
 $\Delta\rho_{\max} = 0.62$ e Å⁻³
 $\Delta\rho_{\min} = -1.06$ e Å⁻³

Table 1
Hydrogen-bond geometry (Å, °).

$D-H\cdots A$	$D-H$	$H\cdots A$	$D\cdots A$	$D-H\cdots A$
$\text{N5}-\text{H5A}\cdots\text{S2}^i$	0.86	2.84	3.631 (4)	154

Symmetry code: (i) $x, -y + \frac{1}{2}, z - \frac{1}{2}$.

Data collection: *CAD-4 Software* (Enraf-Nonius, 1989); cell refinement: *CAD-4 Software*; data reduction: *XCAD4* (Harms & Wocadlo, 1995); program(s) used to solve structure: *SHELXS97* (Sheldrick, 2008); program(s) used to refine structure: *SHELXL97* (Sheldrick, 2008); molecular graphics: *ORTEP-3 for Windows* (Farrugia, 1997) and *PLATON* (Spek, 2003); software used to prepare material for publication: *SHELXTL* (Sheldrick, 2008).

Supplementary data and figures for this paper are available from the IUCr electronic archives (Reference: HK2554).

References

- Allen, F. H., Kennard, O., Watson, D. G., Brammer, L., Orpen, A. G. & Taylor, R. (1987). *J. Chem. Soc. Perkin Trans. 2*, pp. S1–19.
Bach, H., Anderle, K., Fuhrmann, Th. & Wendorff, J. H. (1996). *J. Phys. Chem.* **100**, 4135–4140.
Clark, R. J. H. & Hester, R. E. (1991). *Advances in Materials Science Spectroscopy*. New York: John Wiley & Sons.
Enraf-Nonius (1989). *CAD-4 Software*. Enraf-Nonius, Delft, The Netherlands.
Farrugia, L. J. (1997). *J. Appl. Cryst.* **30**, 565.
Harms, K. & Wocadlo, S. (1995). *XCAD4*. University of Marburg, Germany.
North, A. C. T., Phillips, D. C. & Mathews, F. S. (1968). *Acta Cryst.* **A24**, 351–359.
Sheldrick, G. M. (2008). *Acta Cryst.* **A64**, 112–122.
Spek, A. L. (2003). *J. Appl. Cryst.* **36**, 7–13.
Taniike, K., Matsumoto, T., Sato, T., Ozaki, Y., Nakashima, K. & Iriyama, K. (1996). *J. Phys. Chem.* **100**, 15508–15516.

supporting information

Acta Cryst. (2008). E64, o2166 [doi:10.1107/S1600536808033941]

5,5'-Diethyl-2,2'-(triazene-1,3-diyl)di-1,3,4-thiadiazole

Hai-Su Zeng, Lu-Na Han, Si-shun Kang, Hai-lin Li and Hai-bo Wang

S1. Comment

The photophysical properties of azo compounds are of large interest in the development of nonlinear optical and optical data storage materials (Bach *et al.*, 1996; Taniike *et al.*, 1996; Clark & Hester, 1991). As part of our studies in this area, we report herein the synthesis and crystal structure of the title compound.

In the title compound (Fig. 1), the bond lengths (Allen *et al.*, 1987) and angles are within normal ranges. Rings A (S1/N1/N2/C3/C4) and B (S2/N3/N4/C7/C8) are oriented at a dihedral angle of 2.92 (3)°. So, they are nearly coplanar.

In the crystal structure, intermolecular N—H...S hydrogen bonds (Table 1) link the molecules into chains (Fig. 2), in which they may be effective in the stabilization of the structure. The π – π contacts between the thiadiazole rings, Cg2...Cg2ⁱ and Cg2...Cg1ⁱⁱ [symmetry codes: (i) -x, 1 - y, -z; (ii) -x, -y, -z, where Cg1 and Cg2 are the centroids of the rings A (S1/N1/N2/C3/C4) and B (S2/N3/N4/C7/C8), respectively] may further stabilize the structure, with centroid–centroid distances of 3.699 (3) and 3.720 (2) Å, respectively.

S2. Experimental

For the preparation of the title compound, 5-amino-1,3,4-thiadiazole (5 mmol) was dissolved by heating in concentrated HCl (50 ml) in a water bath, after which the solution was cooled to 268 K and a solution of sodium nitrite (2.5 mmol) in water (3.5 ml) was added dropwise with stirring. The resulting bright-yellow diazonium solution was allowed to stand in ice for 30 min, after which a saturated solution of sodium acetate (100 ml, pH = 5) was added. The precipitate was removed by filtration, and purified by crystallization from toluene. Crystals suitable for X-ray analysis were obtained by slow evaporation of an ethanol solution.

S3. Refinement

H atoms were positioned geometrically, with N—H = 0.86 Å (for NH) and C—H = 0.97 and 0.96 Å for methylene and methyl H, respectively, and constrained to ride on their parent atoms with $U_{\text{iso}}(\text{H}) = xU_{\text{eq}}(\text{C,N})$, where $x = 1.5$ for methyl H and $x = 1.2$ for all other H atoms.

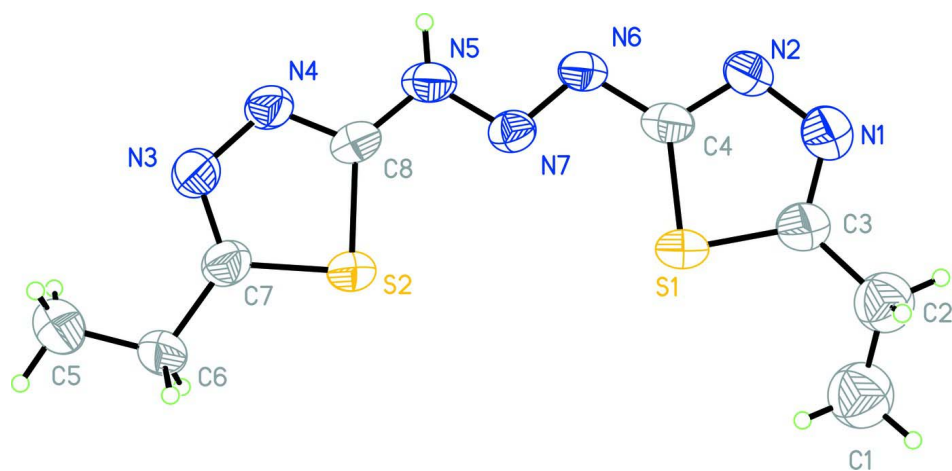
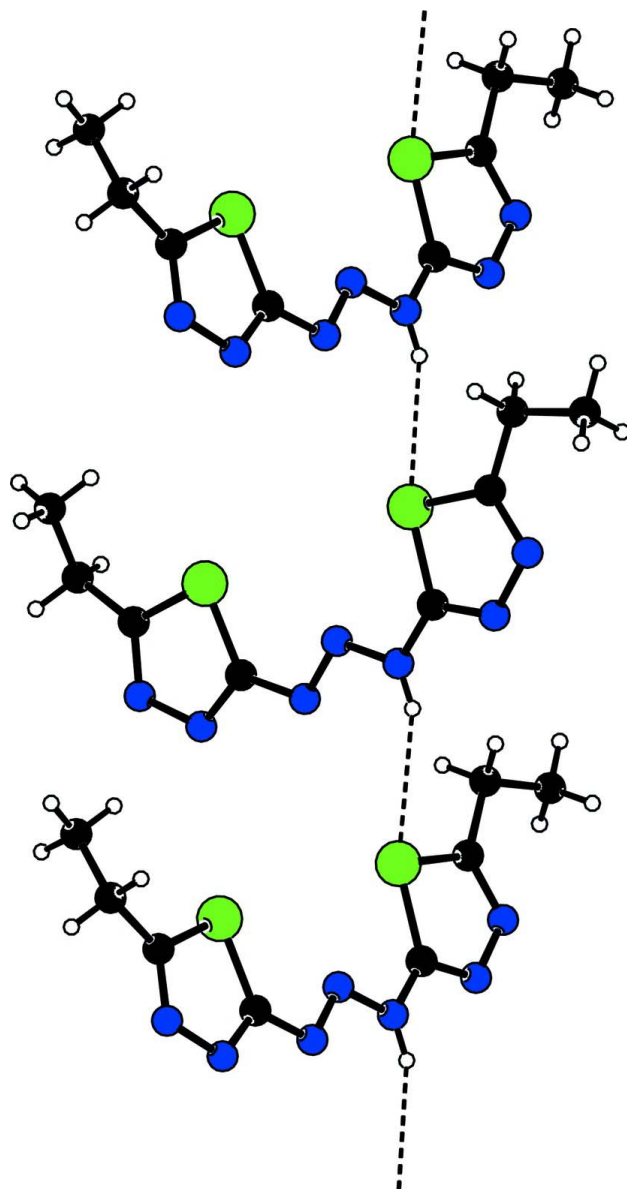


Figure 1

The molecular structure of the title molecule, with the atom-numbering scheme. Displacement ellipsoids are drawn at the 30% probability level.

**Figure 2**

A partial packing diagram of the title compound.

5,5'-Diethyl-2,2'-(triazene-1,3-diyl)di-1,3,4-thiadiazole

Crystal data

$C_8H_{11}N_7S_2$

$M_r = 269.36$

Monoclinic, $P2_1/c$

Hall symbol: $-P\ 2_1/c$

$a = 12.188\ (2)\ \text{\AA}$

$b = 9.1460\ (18)\ \text{\AA}$

$c = 12.790\ (3)\ \text{\AA}$

$\beta = 110.99\ (3)^\circ$

$V = 1331.1\ (5)\ \text{\AA}^3$

$Z = 4$

$F(000) = 560$

$D_x = 1.344\ \text{Mg m}^{-3}$

Mo $K\alpha$ radiation, $\lambda = 0.71073\ \text{\AA}$

Cell parameters from 25 reflections

$\theta = 9\text{--}12^\circ$

$\mu = 0.39\ \text{mm}^{-1}$

$T = 294\ \text{K}$

Block, yellow

$0.20 \times 0.10 \times 0.10\ \text{mm}$

Data collection

Enraf–Nonius CAD-4 diffractometer	2320 independent reflections
Radiation source: fine-focus sealed tube	1468 reflections with $I > 2\sigma(I)$
Graphite monochromator	$R_{\text{int}} = 0.005$
$\omega/2\theta$ scans	$\theta_{\text{max}} = 25.3^\circ$, $\theta_{\text{min}} = 1.8^\circ$
Absorption correction: ψ scan (North <i>et al.</i> , 1968)	$h = -14 \rightarrow 13$
$T_{\text{min}} = 0.926$, $T_{\text{max}} = 0.962$	$k = 0 \rightarrow 10$
2431 measured reflections	$l = 0 \rightarrow 14$
	3 standard reflections every 120 min
	intensity decay: none

Refinement

Refinement on F^2	Secondary atom site location: difference Fourier map
Least-squares matrix: full	Hydrogen site location: inferred from neighbouring sites
$R[F^2 > 2\sigma(F^2)] = 0.072$	H-atom parameters constrained
$wR(F^2) = 0.178$	$w = 1/[\sigma^2(F_o^2) + (0.06P)^2 + 3.61P]$
$S = 1.00$	where $P = (F_o^2 + 2F_c^2)/3$
2320 reflections	$(\Delta/\sigma)_{\text{max}} < 0.001$
142 parameters	$\Delta\rho_{\text{max}} = 0.62 \text{ e } \text{\AA}^{-3}$
0 restraints	$\Delta\rho_{\text{min}} = -1.06 \text{ e } \text{\AA}^{-3}$
Primary atom site location: structure-invariant direct methods	

Special details

Geometry. All e.s.d.'s (except the e.s.d. in the dihedral angle between two l.s. planes) are estimated using the full covariance matrix. The cell e.s.d.'s are taken into account individually in the estimation of e.s.d.'s in distances, angles and torsion angles; correlations between e.s.d.'s in cell parameters are only used when they are defined by crystal symmetry. An approximate (isotropic) treatment of cell e.s.d.'s is used for estimating e.s.d.'s involving l.s. planes.

Refinement. Refinement of F^2 against ALL reflections. The weighted R -factor wR and goodness of fit S are based on F^2 , conventional R -factors R are based on F , with F set to zero for negative F^2 . The threshold expression of $F^2 > \sigma(F^2)$ is used only for calculating R -factors(gt) *etc.* and is not relevant to the choice of reflections for refinement. R -factors based on F^2 are statistically about twice as large as those based on F , and R -factors based on ALL data will be even larger.

Fractional atomic coordinates and isotropic or equivalent isotropic displacement parameters (\AA^2)

	x	y	z	$U_{\text{iso}}^*/U_{\text{eq}}$
S1	1.26701 (14)	0.49714 (19)	0.57391 (10)	0.0675 (5)
S2	0.96258 (11)	0.18590 (15)	0.56999 (10)	0.0488 (4)
N1	1.3578 (5)	0.6450 (6)	0.4508 (4)	0.0804 (16)
N2	1.2634 (4)	0.5731 (5)	0.3737 (3)	0.0548 (11)
N3	0.7840 (4)	0.0373 (5)	0.4403 (3)	0.0554 (12)
N4	0.8301 (3)	0.1075 (5)	0.3694 (3)	0.0512 (11)
N5	0.9719 (4)	0.2610 (5)	0.3544 (3)	0.0515 (11)
H5A	0.9482	0.2556	0.2825	0.062*
N6	1.1099 (3)	0.4124 (5)	0.3558 (3)	0.0463 (10)
N7	1.0651 (3)	0.3422 (4)	0.4200 (3)	0.0417 (9)
C1	1.5073 (6)	0.6346 (8)	0.7641 (5)	0.092
H1B	1.5528	0.7039	0.8189	0.138*
H1C	1.5570	0.5558	0.7586	0.138*
H1D	1.4453	0.5968	0.7861	0.138*
C2	1.4558 (5)	0.7082 (7)	0.6535 (5)	0.073

H2A	1.5195	0.7411	0.6308	0.088*
H2B	1.4135	0.7943	0.6626	0.088*
C3	1.3715 (6)	0.6141 (9)	0.5586 (5)	0.090 (2)
C4	1.2070 (4)	0.4920 (6)	0.4245 (4)	0.0466 (12)
C5	0.7047 (6)	-0.0851 (8)	0.6080 (5)	0.0790 (19)
H5B	0.6879	-0.1221	0.6709	0.119*
H5C	0.7149	-0.1654	0.5640	0.119*
H5D	0.6406	-0.0251	0.5629	0.119*
C6	0.8141 (5)	0.0036 (7)	0.6486 (4)	0.0589 (14)
H6B	0.8787	-0.0567	0.6950	0.071*
H6C	0.8043	0.0837	0.6941	0.071*
C7	0.8436 (4)	0.0651 (6)	0.5493 (4)	0.0509 (13)
C8	0.9231 (4)	0.1912 (6)	0.4186 (4)	0.0465 (12)

Atomic displacement parameters (Å²)

	U^{11}	U^{22}	U^{33}	U^{12}	U^{13}	U^{23}
S1	0.0757 (10)	0.0889 (12)	0.0315 (7)	-0.0236 (9)	0.0116 (6)	0.0029 (7)
S2	0.0510 (7)	0.0616 (8)	0.0329 (6)	-0.0063 (7)	0.0140 (5)	-0.0044 (6)
N1	0.073 (3)	0.099 (4)	0.062 (3)	-0.029 (3)	0.016 (3)	0.013 (3)
N2	0.053 (3)	0.066 (3)	0.043 (2)	-0.006 (2)	0.015 (2)	0.011 (2)
N3	0.045 (2)	0.074 (3)	0.049 (3)	-0.006 (2)	0.019 (2)	-0.012 (2)
N4	0.044 (2)	0.074 (3)	0.037 (2)	-0.005 (2)	0.0164 (19)	-0.010 (2)
N5	0.052 (3)	0.069 (3)	0.033 (2)	0.004 (2)	0.014 (2)	0.002 (2)
N6	0.049 (2)	0.057 (3)	0.032 (2)	-0.002 (2)	0.0141 (19)	0.0018 (19)
N7	0.038 (2)	0.049 (2)	0.036 (2)	0.0040 (18)	0.0114 (18)	-0.0001 (18)
C1	0.092	0.092	0.092	0.000	0.033	0.000
C2	0.073	0.073	0.073	0.000	0.026	0.000
C3	0.083 (4)	0.126 (6)	0.047 (3)	-0.045 (4)	0.008 (3)	0.010 (4)
C4	0.047 (3)	0.059 (3)	0.034 (2)	0.007 (3)	0.015 (2)	0.005 (2)
C5	0.084 (4)	0.095 (5)	0.065 (4)	-0.030 (4)	0.035 (3)	-0.004 (4)
C6	0.067 (3)	0.072 (4)	0.044 (3)	-0.019 (3)	0.029 (3)	-0.012 (3)
C7	0.048 (3)	0.061 (3)	0.043 (3)	-0.004 (3)	0.015 (2)	-0.010 (2)
C8	0.045 (3)	0.053 (3)	0.035 (2)	0.001 (2)	0.007 (2)	-0.006 (2)

Geometric parameters (Å, °)

S1—C3	1.728 (6)	C1—H1B	0.9600
S1—C4	1.786 (5)	C1—H1C	0.9600
S2—C7	1.766 (5)	C1—H1D	0.9600
S2—C8	1.820 (5)	C2—C3	1.541 (8)
N1—N2	1.384 (6)	C2—H2A	0.9700
N1—C3	1.358 (7)	C2—H2B	0.9700
N2—C4	1.328 (6)	C4—N6	1.399 (6)
N3—N4	1.384 (6)	C5—C6	1.487 (7)
N3—C7	1.346 (6)	C5—H5B	0.9600
N4—C8	1.325 (6)	C5—H5C	0.9600
N5—N7	1.365 (5)	C5—H5D	0.9600

N5—C8	1.338 (6)	C6—C7	1.544 (7)
N5—H5A	0.8600	C6—H6B	0.9700
N6—N7	1.306 (5)	C6—H6C	0.9700
C1—C2	1.486 (7)		
C3—S1—C4	86.0 (3)	N1—C3—S1	114.6 (5)
C7—S2—C8	88.1 (2)	C2—C3—S1	124.5 (5)
C3—N1—N2	113.1 (5)	N2—C4—N6	116.9 (4)
C4—N2—N1	111.2 (4)	N2—C4—S1	115.1 (4)
C7—N3—N4	113.3 (4)	N6—C4—S1	128.0 (4)
C8—N4—N3	115.8 (4)	C6—C5—H5B	109.5
N7—N5—H5A	125.1	C6—C5—H5C	109.5
C8—N5—N7	109.7 (4)	H5B—C5—H5C	109.5
C8—N5—H5A	125.1	C6—C5—H5D	109.5
N7—N6—C4	108.2 (4)	H5B—C5—H5D	109.5
N6—N7—N5	108.9 (4)	H5C—C5—H5D	109.5
C2—C1—H1B	109.5	C5—C6—C7	110.8 (4)
C2—C1—H1C	109.5	C5—C6—H6B	109.5
H1B—C1—H1C	109.5	C7—C6—H6B	109.5
C2—C1—H1D	109.5	C5—C6—H6C	109.5
H1B—C1—H1D	109.5	C7—C6—H6C	109.5
H1C—C1—H1D	109.5	H6B—C6—H6C	108.1
C1—C2—C3	115.6 (6)	N3—C7—C6	125.8 (5)
C1—C2—H2A	108.4	N3—C7—S2	112.5 (4)
C3—C2—H2A	108.4	C6—C7—S2	121.7 (4)
C1—C2—H2B	108.4	N4—C8—N5	118.5 (4)
C3—C2—H2B	108.4	N4—C8—S2	110.2 (4)
H2A—C2—H2B	107.4	N5—C8—S2	131.3 (4)
N1—C3—C2	119.3 (6)		
C3—N1—N2—C4	1.1 (8)	N4—N3—C7—C6	179.9 (5)
N2—N1—C3—C2	-167.6 (6)	N4—N3—C7—S2	0.9 (6)
N2—N1—C3—S1	-1.5 (9)	C5—C6—C7—N3	-3.6 (8)
C1—C2—C3—N1	-153.7 (7)	C5—C6—C7—S2	175.3 (4)
C1—C2—C3—S1	41.7 (9)	C8—S2—C7—N3	-0.6 (4)
C4—S1—C3—N1	1.1 (6)	C8—S2—C7—C6	-179.6 (5)
C4—S1—C3—C2	166.4 (7)	N3—N4—C8—N5	179.6 (4)
C7—N3—N4—C8	-0.9 (6)	N3—N4—C8—S2	0.4 (5)
N1—N2—C4—N6	-179.5 (4)	N7—N5—C8—N4	179.4 (4)
N1—N2—C4—S1	-0.3 (6)	N7—N5—C8—S2	-1.6 (6)
C3—S1—C4—N2	-0.5 (5)	C7—S2—C8—N4	0.1 (4)
C3—S1—C4—N6	178.7 (5)	C7—S2—C8—N5	-178.9 (5)
N2—C4—N6—N7	-178.9 (4)	C4—N6—N7—N5	-178.5 (4)
S1—C4—N6—N7	1.9 (6)	C8—N5—N7—N6	-178.4 (4)

Hydrogen-bond geometry (Å, °)

<i>D—H···A</i>	<i>D—H</i>	<i>H···A</i>	<i>D···A</i>	<i>D—H···A</i>
N5—H5A···S2 ⁱ	0.86	2.84	3.631 (4)	154

Symmetry code: (i) $x, -y+1/2, z-1/2$.