

Acta Crystallographica Section E

Structure Reports

Online

ISSN 1600-5368

Benzyl *N'*-(1*H*-indol-3-ylmethylidene)-hydrazinecarbodithioate

Hamid Khaledi, Hapipah Mohd Ali and Seik Weng Ng*

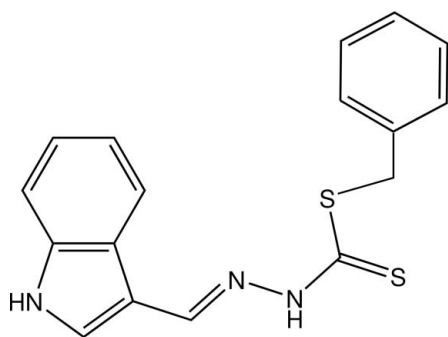
 Department of Chemistry, University of Malaya, 50603 Kuala Lumpur, Malaysia
 Correspondence e-mail: seikweng@um.edu.my

Received 22 September 2008; accepted 5 October 2008

 Key indicators: single-crystal X-ray study; $T = 100$ K; mean $\sigma(\text{C}-\text{C}) = 0.004$ Å; R factor = 0.049; wR factor = 0.118; data-to-parameter ratio = 17.0.

 The $\text{C}_{10}\text{H}_8\text{N}_3\text{S}_2$ portion of the title molecule, $\text{C}_{17}\text{H}_{15}\text{N}_3\text{S}_3$, is nearly planar (r.m.s. deviation 0.05 Å); this unit and the phenyl ring subtend an angle of 114.5 (2)° at the methylene C atom.

Related literature

 For other Schiff bases derived by condensing *S*-benzyl hydrazinecarbodithioate with either aromatic aldehydes or ketones, see: Ali *et al.* (2004); Chan *et al.* (2003); Fun *et al.* (1995); How *et al.* (2007*a,b,c*); Khoo *et al.* (2005); Qiu & Luo (2007); Roy *et al.* (2007); Tarafder *et al.* (2002); Xu *et al.* (1991); Zhang *et al.* (2004).


Experimental

Crystal data

 $\text{C}_{17}\text{H}_{15}\text{N}_3\text{S}_2$
 $M_r = 325.44$
 Monoclinic, $P2_1/c$
 $a = 15.4936$ (7) Å
 $b = 9.8114$ (4) Å
 $c = 10.2531$ (4) Å

 $\beta = 98.432$ (3)°
 $V = 1541.8$ (1) Å³
 $Z = 4$
 Mo $K\alpha$ radiation
 $\mu = 0.34$ mm⁻¹
 $T = 100$ (2) K

0.25 × 0.10 × 0.03 mm

Data collection

 Bruker SMART APEX
 diffractometer
 Absorption correction: multi-scan
 (SADABS; Sheldrick, 1996)
 $T_{\min} = 0.919$, $T_{\max} = 0.990$

 8531 measured reflections
 3383 independent reflections
 2323 reflections with $I > 2\sigma(I)$
 $R_{\text{int}} = 0.058$

Refinement

 $R[F^2 > 2\sigma(F^2)] = 0.049$
 $wR(F^2) = 0.118$
 $S = 1.01$
 3383 reflections

 199 parameters
 H-atom parameters constrained
 $\Delta\rho_{\text{max}} = 0.48$ e Å⁻³
 $\Delta\rho_{\text{min}} = -0.33$ e Å⁻³

Data collection: APEX2 (Bruker, 2007); cell refinement: APEX2; data reduction: SAINT (Bruker, 2007); program(s) used to solve structure: SHELXS97 (Sheldrick, 2008); program(s) used to refine structure: SHELXL97 (Sheldrick, 2008); molecular graphics: X-SEED (Barbour, 2001); software used to prepare material for publication: publCIF (Westrip, 2008).

The authors thank the University of Malaya for funding this study (Science Fund Grants 12-02-03-2031 and 12-02-03-2051).

Supplementary data and figures for this paper are available from the IUCr electronic archives (Reference: TK2309).

References

- Ali, M. A., Mirza, A. H., Hamid, M. H. S. A., Bujang, F. H. & Bernhardt, P. V. (2004). *Polyhedron*, **23**, 2405–2412.
- Barbour, L. J. (2001). *J. Supramol. Chem.* **1**, 189–191.
- Bruker (2007). APEX2 and SAINT. Bruker AXS Inc., Madison, Wisconsin, USA.
- Chan, M.-H. E., Crouse, K. A., Tarafder, M. T. H. & Yamin, B. M. (2003). *Acta Cryst.* **E59**, o628–o629.
- Fun, H.-K., Sivakumar, K., Yip, B.-C., Tian, Y.-P., Duan, C.-Y., Lu, Z.-L. & You, X.-Z. (1995). *Acta Cryst.* **C51**, 2080–2083.
- How, F. N.-F., Watkin, D. J., Crouse, K. A. & Tahir, M. I. M. (2007*a*). *Acta Cryst.* **E63**, o3023–o3024.
- How, F. N.-F., Watkin, D. J., Crouse, K. A. & Tahir, M. I. M. (2007*b*). *Acta Cryst.* **E63**, o3133–o3134.
- How, F. N.-F., Watkin, D. J., Crouse, K. A. & Tahir, M. I. M. (2007*c*). *Acta Cryst.* **E63**, o3135–o3136.
- Khoo, T.-J., Cowley, A. R., Watkin, D. J., Crouse, K. A. & Tarafder, M. T. H. (2005). *Acta Cryst.* **E61**, o2441–o2443.
- Qiu, X.-Y. & Luo, Z.-G. (2007). *Acta Cryst.* **E63**, o4339.
- Roy, S., Mandal, T. N., Barik, A. K., Pal, S., Gupta, S., Hazra, A., Butcher, R. J., Hunter, A. D., Zeller, M. & Kar, S. K. (2007). *Polyhedron*, **26**, 2603–2611.
- Sheldrick, G. M. (1996). SADABS. University of Göttingen, Germany.
- Sheldrick, G. M. (2008). *Acta Cryst.* **A64**, 112–122.
- Tarafder, M. T. H., Khoo, T.-J., Crouse, K. A., Ali, A. M., Yamin, B. M. & Fun, H.-K. (2002). *Polyhedron*, **21**, 2691–2698.
- Westrip, S. P. (2008). publCIF. In preparation.
- Xu, Z., Alyea, E., Ferguson, G. & Jennings, M. C. (1991). *Polyhedron*, **10**, 1625–1629.
- Zhang, M.-L., Tian, Y.-P., Zhang, X.-J., Wu, J.-Y., Zhang, S.-Y., Wang, D., Jiang, M. H., Chantrapromma, S. & Fun, H.-K. (2004). *Transition Met. Chem.* **29**, 596–602.

supporting information

Acta Cryst. (2008). E64, o2107 [doi:10.1107/S160053680803198X]

Benzyl *N'*-(1*H*-indol-3-ylmethylidene)hydrazinecarbodithioate

Hamid Khaledi, Hapipah Mohd Ali and Seik Weng Ng

S1. Comment

The structure of (I), Fig. 1, shows bond distances for N1—N2 and N2—C9 of 1.382 (3) and 1.287 (3) Å, respectively, confirming the assignment shown in the Scheme. The molecule is bent about the methylene-C7 atom so that the residues on either side are approximately orthogonal. The amino groups do not form any hydrogen bonds.

S2. Experimental

Indole-3-carbaldehyde (0.37 g, 2.5 mmol) and *S*-benzyl dithiocarbazate (0.50 g, 2.5 mmol) were heated in methanol (40 ml) for 3 h. The solution was set aside for the formation of yellow crystals.

S3. Refinement

Hydrogen atoms were placed at calculated positions (C—H 0.95–0.99, N—H 0.88 Å) and were treated as riding on their parent carbon atoms, with $U(\text{H})$ set to 1.2 times $U_{\text{eq}}(\text{C}, \text{N})$.

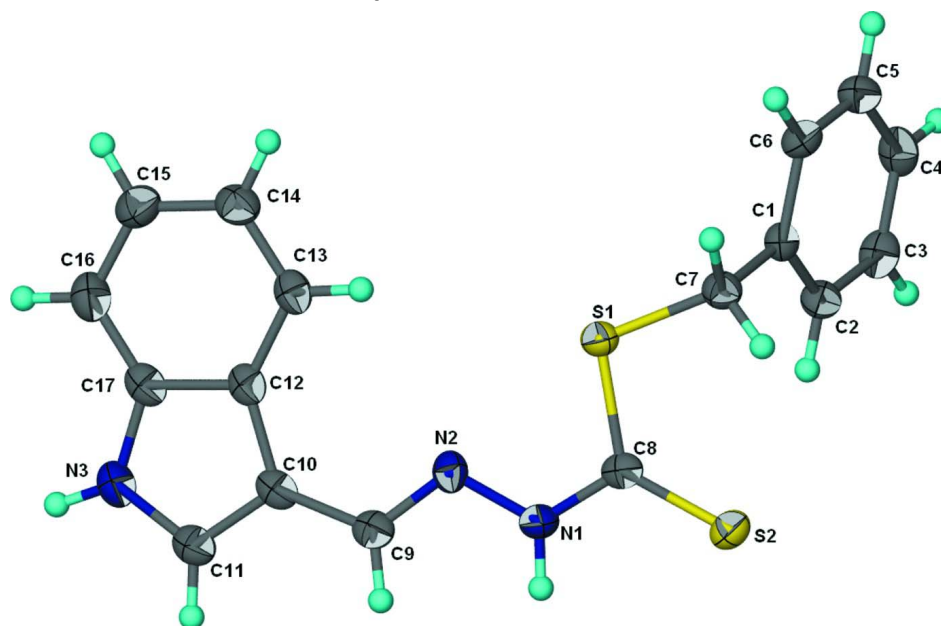


Figure 1

Thermal ellipsoid plot (Barbour, 2001) of $\text{C}_{17}\text{H}_{15}\text{N}_2\text{S}_3$ at the 70% probability level. Hydrogen atoms are drawn as spheres of arbitrary radius.

Benzyl *N'*-(1*H*-indol-3-ylmethylidene)hydrazinecarbodithioate*Crystal data*C₁₇H₁₅N₃S₂ $M_r = 325.44$ Monoclinic, $P2_1/c$

Hall symbol: -P 2ybc

 $a = 15.4936$ (7) Å $b = 9.8114$ (4) Å $c = 10.2531$ (4) Å $\beta = 98.432$ (3)° $V = 1541.8$ (1) Å³ $Z = 4$ $F(000) = 680$ $D_x = 1.402$ Mg m⁻³Mo $K\alpha$ radiation, $\lambda = 0.71073$ Å

Cell parameters from 1305 reflections

 $\theta = 2.5$ – 23.2 ° $\mu = 0.34$ mm⁻¹ $T = 100$ K

Prism, light yellow

 $0.25 \times 0.10 \times 0.03$ mm*Data collection*

Bruker SMART APEX

diffractometer

Radiation source: fine-focus sealed tube

Graphite monochromator

 ω scans

Absorption correction: multi-scan

(SADABS; Sheldrick, 1996)

 $T_{\min} = 0.919$, $T_{\max} = 0.990$

8531 measured reflections

3383 independent reflections

2323 reflections with $I > 2\sigma(I)$ $R_{\text{int}} = 0.058$ $\theta_{\text{max}} = 27$ °, $\theta_{\text{min}} = 1.3$ ° $h = -20$ → 20 $k = -12$ → 12 $l = -13$ → 8 *Refinement*Refinement on F^2

Least-squares matrix: full

 $R[F^2 > 2\sigma(F^2)] = 0.049$ $wR(F^2) = 0.118$ $S = 1.01$

3383 reflections

199 parameters

0 restraints

Primary atom site location: structure-invariant

direct methods

Secondary atom site location: difference Fourier map

Hydrogen site location: inferred from neighbouring sites

H-atom parameters constrained

 $w = 1/[\sigma^2(F_o^2) + (0.0391P)^2 + 1.1115P]$ where $P = (F_o^2 + 2F_c^2)/3$ $(\Delta/\sigma)_{\text{max}} = 0.001$ $\Delta\rho_{\text{max}} = 0.48$ e Å⁻³ $\Delta\rho_{\text{min}} = -0.33$ e Å⁻³*Fractional atomic coordinates and isotropic or equivalent isotropic displacement parameters (Å²)*

	<i>x</i>	<i>y</i>	<i>z</i>	$U_{\text{iso}}^*/U_{\text{eq}}$
S1	0.75015 (5)	0.74458 (7)	0.47255 (7)	0.02090 (18)
S2	0.87340 (5)	0.53986 (7)	0.36891 (7)	0.02198 (19)
N1	0.70350 (15)	0.5227 (2)	0.3457 (2)	0.0217 (5)
H1	0.7086	0.4440	0.3063	0.026*
N2	0.62145 (15)	0.5704 (2)	0.3596 (2)	0.0212 (5)
N3	0.32371 (16)	0.5105 (2)	0.2983 (2)	0.0253 (6)
H3	0.2706	0.4795	0.2732	0.030*
C1	0.87962 (17)	0.9360 (3)	0.4432 (3)	0.0188 (6)
C2	0.89308 (18)	0.9185 (3)	0.3115 (3)	0.0216 (6)
H2	0.8855	0.8312	0.2714	0.026*
C3	0.91737 (18)	1.0283 (3)	0.2403 (3)	0.0242 (7)
H3a	0.9272	1.0156	0.1518	0.029*
C4	0.92738 (18)	1.1564 (3)	0.2970 (3)	0.0259 (7)

H4	0.9436	1.2316	0.2475	0.031*
C5	0.91353 (19)	1.1742 (3)	0.4261 (3)	0.0245 (7)
H5	0.9202	1.2619	0.4654	0.029*
C6	0.89010 (18)	1.0647 (3)	0.4983 (3)	0.0212 (6)
H6	0.8811	1.0780	0.5871	0.025*
C7	0.85739 (18)	0.8174 (3)	0.5249 (3)	0.0210 (6)
H7A	0.8609	0.8475	0.6176	0.025*
H7B	0.9018	0.7453	0.5220	0.025*
C8	0.77530 (18)	0.5938 (3)	0.3909 (3)	0.0191 (6)
C9	0.55868 (18)	0.4859 (3)	0.3251 (3)	0.0209 (6)
H9	0.5717	0.3976	0.2953	0.025*
C10	0.46972 (19)	0.5221 (3)	0.3305 (3)	0.0204 (6)
C11	0.39833 (19)	0.4445 (3)	0.2826 (3)	0.0230 (6)
H11	0.4009	0.3569	0.2438	0.028*
C12	0.43633 (18)	0.6451 (3)	0.3827 (3)	0.0197 (6)
C13	0.47407 (19)	0.7591 (3)	0.4513 (3)	0.0217 (6)
H13	0.5357	0.7694	0.4680	0.026*
C14	0.42007 (19)	0.8557 (3)	0.4939 (3)	0.0255 (7)
H14	0.4452	0.9328	0.5412	0.031*
C15	0.3294 (2)	0.8434 (3)	0.4694 (3)	0.0285 (7)
H15	0.2941	0.9122	0.4997	0.034*
C16	0.2901 (2)	0.7323 (3)	0.4016 (3)	0.0284 (7)
H16	0.2284	0.7238	0.3842	0.034*
C17	0.34423 (19)	0.6341 (3)	0.3602 (3)	0.0222 (6)

Atomic displacement parameters (Å²)

	U^{11}	U^{22}	U^{33}	U^{12}	U^{13}	U^{23}
S1	0.0225 (4)	0.0184 (3)	0.0229 (4)	-0.0009 (3)	0.0070 (3)	-0.0025 (3)
S2	0.0234 (4)	0.0212 (4)	0.0226 (4)	0.0034 (3)	0.0075 (3)	0.0014 (3)
N1	0.0231 (13)	0.0194 (12)	0.0234 (14)	-0.0005 (10)	0.0060 (11)	-0.0047 (10)
N2	0.0197 (12)	0.0236 (13)	0.0211 (14)	-0.0023 (10)	0.0062 (10)	0.0016 (11)
N3	0.0220 (13)	0.0285 (14)	0.0249 (14)	-0.0048 (11)	0.0022 (11)	0.0006 (11)
C1	0.0166 (14)	0.0203 (14)	0.0195 (16)	-0.0007 (11)	0.0027 (12)	0.0006 (12)
C2	0.0223 (15)	0.0239 (15)	0.0181 (16)	-0.0013 (12)	0.0012 (12)	-0.0037 (12)
C3	0.0235 (15)	0.0337 (17)	0.0158 (15)	0.0008 (13)	0.0038 (12)	0.0034 (13)
C4	0.0236 (15)	0.0250 (15)	0.0295 (19)	-0.0006 (13)	0.0045 (13)	0.0106 (14)
C5	0.0262 (16)	0.0198 (15)	0.0277 (18)	0.0005 (12)	0.0041 (13)	-0.0016 (13)
C6	0.0228 (15)	0.0218 (15)	0.0196 (16)	0.0036 (12)	0.0050 (12)	-0.0002 (12)
C7	0.0227 (15)	0.0209 (15)	0.0196 (16)	-0.0006 (12)	0.0032 (12)	-0.0010 (12)
C8	0.0265 (15)	0.0170 (14)	0.0149 (15)	0.0008 (11)	0.0064 (12)	0.0024 (11)
C9	0.0277 (16)	0.0217 (15)	0.0142 (15)	-0.0022 (12)	0.0058 (12)	-0.0003 (12)
C10	0.0268 (15)	0.0201 (14)	0.0140 (15)	-0.0048 (12)	0.0020 (12)	0.0024 (12)
C11	0.0297 (16)	0.0217 (15)	0.0180 (16)	-0.0046 (13)	0.0054 (13)	0.0009 (13)
C12	0.0233 (15)	0.0220 (15)	0.0143 (15)	-0.0039 (12)	0.0044 (12)	0.0040 (12)
C13	0.0227 (15)	0.0248 (15)	0.0177 (16)	-0.0043 (12)	0.0037 (12)	0.0041 (13)
C14	0.0315 (17)	0.0253 (16)	0.0205 (17)	-0.0039 (13)	0.0063 (13)	-0.0028 (13)
C15	0.0291 (17)	0.0296 (17)	0.0277 (18)	0.0022 (14)	0.0077 (14)	-0.0038 (14)

C16	0.0231 (16)	0.0340 (18)	0.0281 (18)	-0.0034 (13)	0.0040 (13)	0.0005 (15)
C17	0.0272 (16)	0.0228 (15)	0.0163 (15)	-0.0057 (12)	0.0025 (12)	0.0034 (12)

Geometric parameters (Å, °)

S1—C8	1.771 (3)	C5—H5	0.9500
S1—C7	1.816 (3)	C6—H6	0.9500
S2—C8	1.656 (3)	C7—H7A	0.9900
N1—C8	1.337 (4)	C7—H7B	0.9900
N1—N2	1.382 (3)	C9—C10	1.432 (4)
N1—H1	0.8800	C9—H9	0.9500
N2—C9	1.287 (3)	C10—C11	1.373 (4)
N3—C11	1.355 (4)	C10—C12	1.446 (4)
N3—C17	1.384 (4)	C11—H11	0.9500
N3—H3	0.8800	C12—C13	1.402 (4)
C1—C6	1.383 (4)	C12—C17	1.416 (4)
C1—C2	1.407 (4)	C13—C14	1.377 (4)
C1—C7	1.503 (4)	C13—H13	0.9500
C2—C3	1.384 (4)	C14—C15	1.395 (4)
C2—H2	0.9500	C14—H14	0.9500
C3—C4	1.384 (4)	C15—C16	1.385 (4)
C3—H3a	0.9500	C15—H15	0.9500
C4—C5	1.384 (4)	C16—C17	1.384 (4)
C4—H4	0.9500	C16—H16	0.9500
C5—C6	1.383 (4)		
C8—S1—C7	102.30 (13)	H7A—C7—H7B	107.6
C8—N1—N2	121.2 (2)	N1—C8—S2	121.3 (2)
C8—N1—H1	119.4	N1—C8—S1	111.7 (2)
N2—N1—H1	119.4	S2—C8—S1	126.97 (17)
C9—N2—N1	115.0 (2)	N2—C9—C10	121.5 (3)
C11—N3—C17	109.3 (2)	N2—C9—H9	119.3
C11—N3—H3	125.4	C10—C9—H9	119.3
C17—N3—H3	125.4	C11—C10—C9	125.3 (3)
C6—C1—C2	118.6 (3)	C11—C10—C12	106.4 (3)
C6—C1—C7	120.1 (3)	C9—C10—C12	128.3 (3)
C2—C1—C7	121.2 (3)	N3—C11—C10	110.4 (3)
C3—C2—C1	120.1 (3)	N3—C11—H11	124.8
C3—C2—H2	119.9	C10—C11—H11	124.8
C1—C2—H2	119.9	C13—C12—C17	118.6 (3)
C4—C3—C2	120.5 (3)	C13—C12—C10	134.9 (3)
C4—C3—H3a	119.8	C17—C12—C10	106.4 (2)
C2—C3—H3a	119.8	C14—C13—C12	118.7 (3)
C3—C4—C5	119.5 (3)	C14—C13—H13	120.7
C3—C4—H4	120.2	C12—C13—H13	120.7
C5—C4—H4	120.2	C13—C14—C15	121.7 (3)
C4—C5—C6	120.3 (3)	C13—C14—H14	119.2
C4—C5—H5	119.9	C15—C14—H14	119.2

C6—C5—H5	119.9	C16—C15—C14	121.0 (3)
C5—C6—C1	121.0 (3)	C16—C15—H15	119.5
C5—C6—H6	119.5	C14—C15—H15	119.5
C1—C6—H6	119.5	C17—C16—C15	117.4 (3)
C1—C7—S1	114.5 (2)	C17—C16—H16	121.3
C1—C7—H7A	108.6	C15—C16—H16	121.3
S1—C7—H7A	108.6	C16—C17—N3	129.9 (3)
C1—C7—H7B	108.6	C16—C17—C12	122.6 (3)
S1—C7—H7B	108.6	N3—C17—C12	107.4 (2)
C8—N1—N2—C9	-172.7 (3)	C9—C10—C11—N3	-177.4 (3)
C6—C1—C2—C3	0.8 (4)	C12—C10—C11—N3	1.3 (3)
C7—C1—C2—C3	-177.1 (3)	C11—C10—C12—C13	175.2 (3)
C1—C2—C3—C4	-1.0 (4)	C9—C10—C12—C13	-6.2 (5)
C2—C3—C4—C5	0.5 (4)	C11—C10—C12—C17	-1.0 (3)
C3—C4—C5—C6	0.2 (4)	C9—C10—C12—C17	177.7 (3)
C4—C5—C6—C1	-0.3 (4)	C17—C12—C13—C14	0.0 (4)
C2—C1—C6—C5	-0.2 (4)	C10—C12—C13—C14	-175.8 (3)
C7—C1—C6—C5	177.7 (3)	C12—C13—C14—C15	-0.6 (4)
C6—C1—C7—S1	113.9 (3)	C13—C14—C15—C16	0.4 (5)
C2—C1—C7—S1	-68.2 (3)	C14—C15—C16—C17	0.4 (5)
C8—S1—C7—C1	103.7 (2)	C15—C16—C17—N3	175.7 (3)
N2—N1—C8—S2	-177.5 (2)	C15—C16—C17—C12	-1.1 (4)
N2—N1—C8—S1	2.6 (3)	C11—N3—C17—C16	-176.7 (3)
C7—S1—C8—N1	179.0 (2)	C11—N3—C17—C12	0.4 (3)
C7—S1—C8—S2	-0.9 (2)	C13—C12—C17—C16	0.9 (4)
N1—N2—C9—C10	-178.3 (2)	C10—C12—C17—C16	177.8 (3)
N2—C9—C10—C11	172.6 (3)	C13—C12—C17—N3	-176.6 (2)
N2—C9—C10—C12	-5.8 (5)	C10—C12—C17—N3	0.3 (3)
C17—N3—C11—C10	-1.1 (3)		