

Acta Crystallographica Section E

Structure Reports

Online

ISSN 1600-5368

5-(1*H*-Imidazol-1-ylsulfonyl)-*N,N*-dimethylnaphthalen-1-amine

Lei Teng, Yong Zhang,* Shi-lei Zhang, Yuan Qu and Xian-you Xia

School of Chemical and Materials Engineering, Huangshi Institute of Technology, Huangshi 435003, People's Republic of China

Correspondence e-mail: zy0340907@yahoo.com.cn

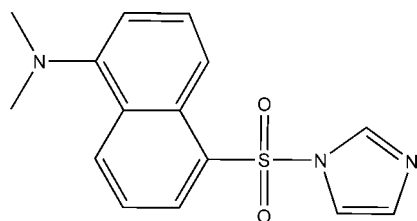
Received 26 November 2008; accepted 3 December 2008

 Key indicators: single-crystal X-ray study; $T = 150$ K; mean $\sigma(\text{C}-\text{C}) = 0.003$ Å; R factor = 0.041; wR factor = 0.110; data-to-parameter ratio = 13.4.

In the title molecule, $\text{C}_{15}\text{H}_{15}\text{N}_3\text{O}_2\text{S}$, the dihedral angle between the naphthalene ring system and the imidazole ring is $86.1(2)^\circ$. In the crystal structure, weak intermolecular $\text{C}-\text{H}\cdots\text{O}$ and $\text{C}-\text{H}\cdots\text{N}$ hydrogen bonds, as well as weak $\text{C}-\text{H}\cdots\pi$ interactions, connect molecules, forming a two-dimensional network.

Related literature

For background information, see: Corradini *et al.* (1997); Kavallieratos *et al.* (2005); Koike *et al.* (1996). For the synthesis, see: Hilderbrand *et al.* (2004).



Experimental

Crystal data

 $\text{C}_{15}\text{H}_{15}\text{N}_3\text{O}_2\text{S}$
 $M_r = 301.36$

 Orthorhombic, *Pbca*
 $a = 16.3707(16)$ Å

 $b = 7.7928(7)$ Å

 $c = 22.088(2)$ Å

 $V = 2817.8(5)$ Å³
 $Z = 8$

 Mo $K\alpha$ radiation

 $\mu = 0.24$ mm⁻¹
 $T = 150(2)$ K

 $0.20 \times 0.10 \times 0.10$ mm

Data collection

 Bruker SMART CCD diffractometer
 Absorption correction: multi-scan (*SADABS*; Sheldrick, 1996)
 $T_{\min} = 0.944$, $T_{\max} = 0.977$

 9800 measured reflections
 2577 independent reflections
 2196 reflections with $I > 2\sigma(I)$
 $R_{\text{int}} = 0.058$

Refinement

 $R[F^2 > 2\sigma(F^2)] = 0.041$
 $wR(F^2) = 0.110$
 $S = 1.07$
 2577 reflections

 192 parameters
 H-atom parameters constrained
 $\Delta\rho_{\max} = 0.50$ e Å⁻³
 $\Delta\rho_{\min} = -0.31$ e Å⁻³
Table 1

Hydrogen-bond geometry (Å, °).

$D-\text{H}\cdots A$	$D-\text{H}$	$\text{H}\cdots A$	$D\cdots A$	$D-\text{H}\cdots A$
$\text{C6}-\text{H6}\cdots\text{O2}$	0.95	2.42	3.057 (2)	125
$\text{C15}-\text{H15}\cdots\text{N3}^{\text{i}}$	0.95	2.45	3.395 (3)	173
$\text{C14}-\text{H14}\cdots\text{O2}^{\text{ii}}$	0.95	2.45	3.358 (3)	161
$\text{C13}-\text{H13}\cdots\text{N1}^{\text{iii}}$	0.95	2.57	3.506 (2)	169
$\text{C10}-\text{H10}\cdots\text{Cg}^{\text{iv}}$	0.95	2.82	3.302 (2)	113

Symmetry codes: (i) $-x + \frac{1}{2}, y + \frac{1}{2}, z$; (ii) $x, y - 1, z$; (iii) $-x, y - \frac{1}{2}, -z + \frac{1}{2}$; (iv) $x + \frac{1}{2}, -y - \frac{1}{2}, -z$. *Cg* is the centroid of the C3–C7/C12 ring.

Data collection: *SMART* (Bruker, 2007); cell refinement: *SAINT-Plus* (Bruker, 2007); data reduction: *SAINT-Plus*; program(s) used to solve structure: *SHELXS97* (Sheldrick, 2008); program(s) used to refine structure: *SHELXL97* (Sheldrick, 2008); molecular graphics: *PLATON* (Spek, 2003); software used to prepare material for publication: *SHELXTL* (Sheldrick, 2008).

Supplementary data and figures for this paper are available from the IUCr electronic archives (Reference: LH2737).

References

- Bruker (2007). *SAINT-Plus* and *SMART*. Bruker AXS Inc., Madison, Wisconsin, USA.
- Corradini, R., Dossena, A., Galaverna, G., Marchelli, R., Panagia, A. & Sarto, G. (1997). *J. Org. Chem.* **62**, 6283–6289.
- Hilderbrand, S. A., Lim, M. H. & Lippard, S. J. (2004). *J. Am. Chem. Soc.* **126**, 4972–4978.
- Kavallieratos, K., Rosenberg, J. M., Chen, W.-Z. & Ren, T. (2005). *J. Am. Chem. Soc.* **127**, 6514–6515.
- Koike, T., Watanabe, T., Aoki, S., Kimura, E. & Shiro, M. (1996). *J. Am. Chem. Soc.* **118**, 12696–12703.
- Sheldrick, G. M. (1996). *SADABS*. Bruker AXS Inc., Madison, Wisconsin, USA.
- Sheldrick, G. M. (2008). *Acta Cryst.* **A64**, 112–122.
- Spek, A. L. (2003). *J. Appl. Cryst.* **36**, 7–13.

supporting information

Acta Cryst. (2009). E65, o55 [doi:10.1107/S160053680804066X]

5-(1*H*-Imidazol-1-ylsulfonyl)-*N,N*-dimethylnaphthalen-1-amine

Lei Teng, Yong Zhang, Shi-lei Zhang, Yuan Qu and Xian-you Xia

S1. Comment

Dansyl chloride is widely used as a fluorescent label in immunofluorescence methods and in yielding fluorescent N-terminal amino acids and peptide derivatives. Some dansyl chloride derivatives are also used as fluorescent probes, which can detect trace metal ions such as Pb^{2+} , Cu^{2+} , Zn^{2+} (Koike *et al.*, 1996; Corradini *et al.*, 1997; Kavallieratos *et al.*, 2005). We are interested in preparing fluorescent drug or ligand analogs that are expected to bind to hydrophobic sites in proteins or membranes. With this mind, the title compound, (I), was prepared and we report the crystal structure herein.

In the molecular structure (Fig. 1), the dihedral angle between the naphthalene ring and the imidazole ring is $86.1(2)^\circ$. All bond lengths and bond angles are as expected. In the crystal structure (Fig.2), the molecules are linked by C—H \cdots O and C—H \cdots N hydrogen bonds (Table 1) and C—H \cdots π interactions into a two-dimension network.

S2. Experimental

Compound (I) was synthesized according to a literature procedure (Hilderbrand *et al.*, 2004). Single crystals suitable for X-ray diffraction were obtained by slow evaporation of an ethyl acetate solution of (I) at room temperature.

S3. Refinement

All H atoms were placed in idealized positions [$\text{C—H}(\text{methyl})=0.98 \text{ \AA}$ and $\text{C—H}(\text{aromatic})=0.95 \text{ \AA}$] and included in the refinement in the riding-model approximation, with $U_{\text{iso}}(\text{H}_{\text{methyl}})=1.5U_{\text{eq}}(\text{C})$ and $U_{\text{iso}}(\text{H}_{\text{aromatic}})=1.2U_{\text{eq}}(\text{C})$.

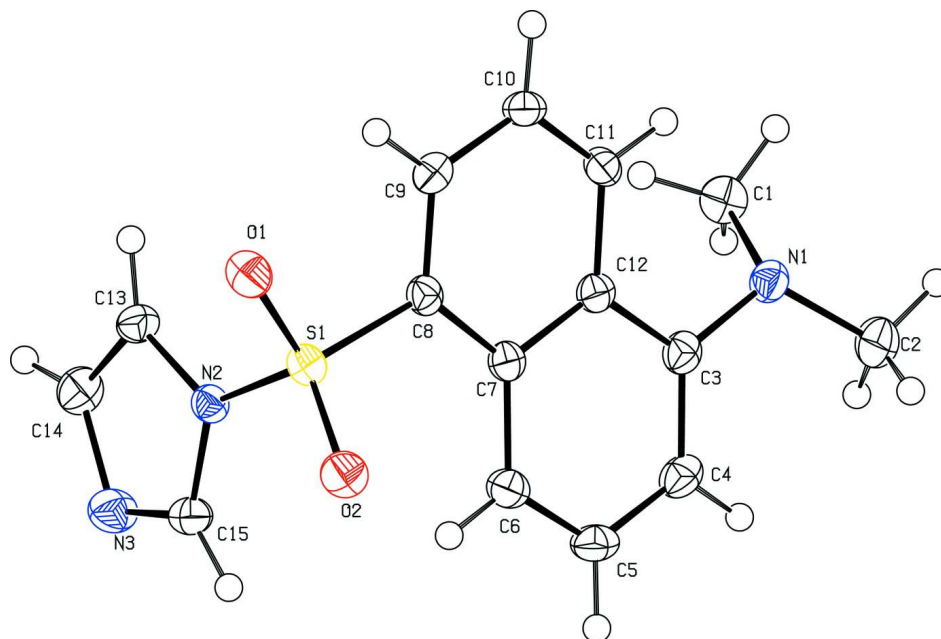


Figure 1

The molecular structure of (I), with displacement ellipsoids drawn at the 50% probability level.

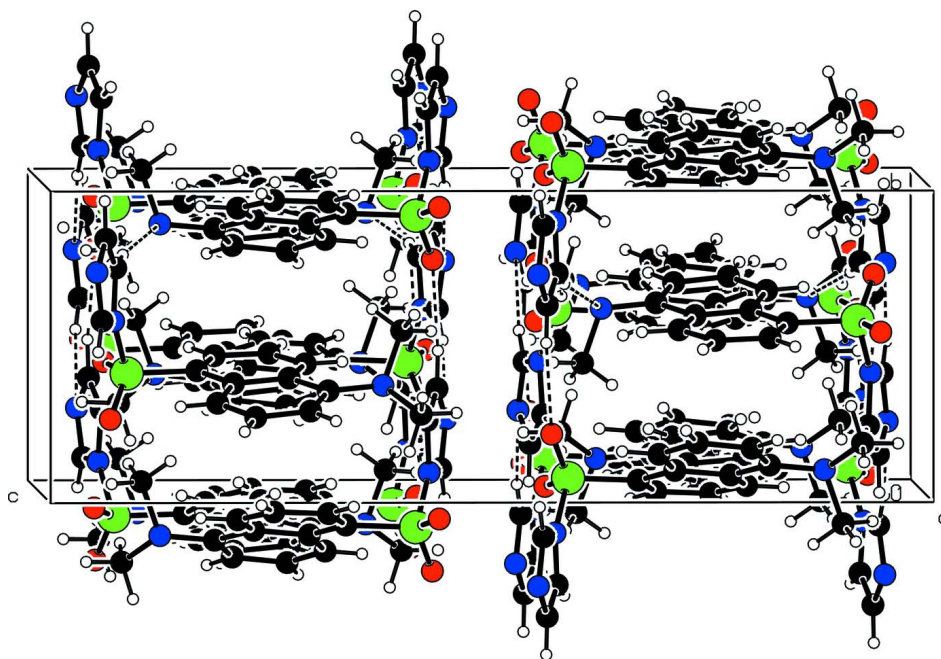


Figure 2

Part of the crystal structure of (I) showing weak hydrogen bonds as dashed lines.

5-(1*H*-Imidazol-1-ylsulfonyl)-*N,N*-dimethylnaphthalen-1-amine

Crystal data

$C_{15}H_{15}N_3O_2S$
 $M_r = 301.36$

Orthorhombic, *Pbca*
 Hall symbol: -P 2ac 2ab

$a = 16.3707$ (16) Å
 $b = 7.7928$ (7) Å
 $c = 22.088$ (2) Å
 $V = 2817.8$ (5) Å³
 $Z = 8$
 $F(000) = 1264$
 $D_x = 1.421$ Mg m⁻³

Mo $K\alpha$ radiation, $\lambda = 0.71073$ Å
 Cell parameters from 3852 reflections
 $\theta = 2.2$ – 28.2°
 $\mu = 0.24$ mm⁻¹
 $T = 150$ K
 Block, red
 $0.20 \times 0.10 \times 0.10$ mm

Data collection

Bruker SMART CCD
 diffractometer
 Radiation source: fine-focus sealed tube
 Graphite monochromator
 φ and ω scans
 Absorption correction: multi-scan
 (SADABS; Sheldrick, 1996)
 $T_{\min} = 0.944$, $T_{\max} = 0.977$

9800 measured reflections
 2577 independent reflections
 2196 reflections with $I > 2\sigma(I)$
 $R_{\text{int}} = 0.058$
 $\theta_{\max} = 25.5^\circ$, $\theta_{\min} = 1.8^\circ$
 $h = -12 \rightarrow 19$
 $k = -7 \rightarrow 9$
 $l = -26 \rightarrow 25$

Refinement

Refinement on F^2
 Least-squares matrix: full
 $R[F^2 > 2\sigma(F^2)] = 0.041$
 $wR(F^2) = 0.110$
 $S = 1.07$
 2577 reflections
 192 parameters
 0 restraints
 Primary atom site location: structure-invariant
 direct methods

Secondary atom site location: difference Fourier
 map
 Hydrogen site location: inferred from
 neighbouring sites
 H-atom parameters constrained
 $w = 1/[\sigma^2(F_o^2) + (0.0583P)^2 + 0.6727P]$
 where $P = (F_o^2 + 2F_c^2)/3$
 $(\Delta/\sigma)_{\max} < 0.001$
 $\Delta\rho_{\max} = 0.50$ e Å⁻³
 $\Delta\rho_{\min} = -0.31$ e Å⁻³

Special details

Geometry. All e.s.d.'s (except the e.s.d. in the dihedral angle between two l.s. planes) are estimated using the full covariance matrix. The cell e.s.d.'s are taken into account individually in the estimation of e.s.d.'s in distances, angles and torsion angles; correlations between e.s.d.'s in cell parameters are only used when they are defined by crystal symmetry. An approximate (isotropic) treatment of cell e.s.d.'s is used for estimating e.s.d.'s involving l.s. planes.

Refinement. Refinement of F^2 against ALL reflections. The weighted R -factor wR and goodness of fit S are based on F^2 , conventional R -factors R are based on F , with F set to zero for negative F^2 . The threshold expression of $F^2 > \sigma(F^2)$ is used only for calculating R -factors(gt) *etc.* and is not relevant to the choice of reflections for refinement. R -factors based on F^2 are statistically about twice as large as those based on F , and R -factors based on ALL data will be even larger.

Fractional atomic coordinates and isotropic or equivalent isotropic displacement parameters (Å²)

	x	y	z	$U_{\text{iso}}^*/U_{\text{eq}}$
C1	0.11008 (13)	-0.0608 (3)	0.10523 (10)	0.0274 (5)
H1A	0.1612	-0.1147	0.0922	0.041*
H1B	0.0721	-0.0558	0.0710	0.041*
H1C	0.0858	-0.1285	0.1380	0.041*
C2	0.18098 (13)	0.2027 (3)	0.08508 (9)	0.0319 (5)
H2A	0.1877	0.3221	0.0981	0.048*
H2B	0.1574	0.2002	0.0443	0.048*
H2C	0.2343	0.1457	0.0846	0.048*
C3	0.14436 (11)	0.1301 (3)	0.18942 (8)	0.0216 (4)
C4	0.21791 (12)	0.1896 (3)	0.21123 (9)	0.0247 (5)

H4	0.2602	0.2184	0.1836	0.030*
C5	0.23134 (11)	0.2084 (3)	0.27371 (9)	0.0255 (5)
H5	0.2825	0.2507	0.2874	0.031*
C6	0.17273 (11)	0.1673 (3)	0.31536 (9)	0.0234 (4)
H6	0.1840	0.1773	0.3574	0.028*
C7	0.09481 (11)	0.1098 (2)	0.29548 (9)	0.0193 (4)
C8	0.02739 (11)	0.0735 (2)	0.33507 (9)	0.0193 (4)
C9	-0.04868 (11)	0.0311 (3)	0.31351 (9)	0.0214 (4)
H9	-0.0917	0.0063	0.3410	0.026*
C10	-0.06277 (11)	0.0244 (3)	0.25099 (9)	0.0221 (4)
H10	-0.1159	-0.0007	0.2360	0.026*
C11	-0.00036 (11)	0.0539 (2)	0.21174 (9)	0.0207 (4)
H11	-0.0107	0.0476	0.1695	0.025*
C12	0.08007 (11)	0.0938 (2)	0.23193 (9)	0.0201 (4)
C13	0.06482 (12)	-0.2592 (3)	0.42799 (9)	0.0235 (5)
H13	0.0112	-0.2976	0.4187	0.028*
C14	0.13037 (12)	-0.3564 (3)	0.44095 (9)	0.0280 (5)
H14	0.1302	-0.4783	0.4420	0.034*
C15	0.17381 (12)	-0.0973 (3)	0.44626 (9)	0.0238 (5)
H15	0.2077	0.0005	0.4514	0.029*
N1	0.12680 (9)	0.1138 (2)	0.12696 (7)	0.0224 (4)
N2	0.09210 (9)	-0.0906 (2)	0.43108 (7)	0.0189 (4)
N3	0.19833 (10)	-0.2548 (2)	0.45265 (8)	0.0295 (4)
O1	-0.04379 (8)	0.04896 (19)	0.43910 (6)	0.0269 (4)
O2	0.08176 (8)	0.22535 (18)	0.43451 (6)	0.0274 (4)
S1	0.03535 (3)	0.08123 (6)	0.41480 (2)	0.02021 (17)

Atomic displacement parameters (Å²)

	U^{11}	U^{22}	U^{33}	U^{12}	U^{13}	U^{23}
C1	0.0290 (10)	0.0248 (13)	0.0283 (11)	0.0020 (9)	0.0010 (9)	-0.0029 (9)
C2	0.0303 (11)	0.0407 (14)	0.0248 (10)	-0.0036 (10)	0.0055 (9)	0.0055 (10)
C3	0.0222 (9)	0.0177 (11)	0.0251 (10)	0.0019 (8)	0.0009 (8)	0.0024 (8)
C4	0.0194 (9)	0.0245 (12)	0.0302 (11)	-0.0013 (8)	0.0048 (8)	0.0025 (9)
C5	0.0178 (9)	0.0250 (12)	0.0337 (11)	-0.0014 (8)	-0.0041 (8)	-0.0010 (9)
C6	0.0226 (9)	0.0224 (12)	0.0251 (10)	-0.0001 (8)	-0.0045 (8)	-0.0002 (8)
C7	0.0199 (9)	0.0163 (11)	0.0218 (10)	0.0023 (8)	-0.0009 (7)	0.0015 (8)
C8	0.0220 (9)	0.0158 (11)	0.0201 (10)	0.0016 (8)	-0.0015 (7)	0.0013 (8)
C9	0.0208 (9)	0.0197 (11)	0.0238 (10)	-0.0010 (8)	0.0026 (8)	0.0008 (8)
C10	0.0181 (9)	0.0211 (11)	0.0270 (11)	-0.0021 (8)	-0.0042 (8)	-0.0001 (9)
C11	0.0227 (10)	0.0205 (12)	0.0190 (9)	0.0003 (8)	-0.0044 (8)	0.0015 (8)
C12	0.0192 (9)	0.0164 (11)	0.0247 (11)	0.0015 (8)	-0.0011 (8)	0.0021 (8)
C13	0.0246 (10)	0.0234 (12)	0.0226 (10)	-0.0060 (9)	-0.0018 (8)	-0.0014 (8)
C14	0.0337 (11)	0.0187 (12)	0.0316 (11)	-0.0002 (9)	-0.0014 (9)	-0.0017 (9)
C15	0.0200 (9)	0.0247 (12)	0.0266 (11)	-0.0024 (8)	-0.0030 (8)	0.0002 (8)
N1	0.0231 (8)	0.0233 (10)	0.0209 (9)	-0.0022 (7)	0.0025 (7)	0.0018 (7)
N2	0.0207 (8)	0.0179 (9)	0.0182 (8)	0.0004 (6)	-0.0016 (6)	-0.0003 (6)
N3	0.0247 (9)	0.0259 (11)	0.0377 (10)	0.0024 (7)	-0.0056 (7)	0.0012 (8)

O1	0.0232 (7)	0.0357 (9)	0.0216 (7)	0.0041 (6)	0.0028 (5)	-0.0006 (6)
O2	0.0325 (8)	0.0221 (8)	0.0276 (7)	0.0006 (6)	-0.0025 (6)	-0.0041 (6)
S1	0.0221 (3)	0.0203 (3)	0.0183 (3)	0.00270 (19)	-0.00034 (18)	-0.00119 (19)

Geometric parameters (Å, °)

C1—N1	1.468 (3)	C8—C9	1.374 (3)
C1—H1A	0.9800	C8—S1	1.767 (2)
C1—H1B	0.9800	C9—C10	1.401 (3)
C1—H1C	0.9800	C9—H9	0.9500
C2—N1	1.457 (2)	C10—C11	1.359 (3)
C2—H2A	0.9800	C10—H10	0.9500
C2—H2B	0.9800	C11—C12	1.424 (3)
C2—H2C	0.9800	C11—H11	0.9500
C3—C4	1.377 (3)	C13—C14	1.344 (3)
C3—N1	1.415 (2)	C13—N2	1.389 (3)
C3—C12	1.438 (3)	C13—H13	0.9500
C4—C5	1.405 (3)	C14—N3	1.390 (3)
C4—H4	0.9500	C14—H14	0.9500
C5—C6	1.367 (3)	C15—N3	1.299 (3)
C5—H5	0.9500	C15—N2	1.380 (2)
C6—C7	1.422 (3)	C15—H15	0.9500
C6—H6	0.9500	N2—S1	1.6692 (16)
C7—C12	1.430 (3)	O1—S1	1.4249 (14)
C7—C8	1.436 (3)	O2—S1	1.4241 (14)
N1—C1—H1A	109.5	C10—C9—H9	120.0
N1—C1—H1B	109.5	C11—C10—C9	119.90 (17)
H1A—C1—H1B	109.5	C11—C10—H10	120.0
N1—C1—H1C	109.5	C9—C10—H10	120.0
H1A—C1—H1C	109.5	C10—C11—C12	122.14 (18)
H1B—C1—H1C	109.5	C10—C11—H11	118.9
N1—C2—H2A	109.5	C12—C11—H11	118.9
N1—C2—H2B	109.5	C11—C12—C7	118.84 (17)
H2A—C2—H2B	109.5	C11—C12—C3	120.99 (17)
N1—C2—H2C	109.5	C7—C12—C3	120.00 (16)
H2A—C2—H2C	109.5	C14—C13—N2	105.42 (17)
H2B—C2—H2C	109.5	C14—C13—H13	127.3
C4—C3—N1	123.28 (17)	N2—C13—H13	127.3
C4—C3—C12	118.54 (17)	C13—C14—N3	110.95 (19)
N1—C3—C12	118.04 (16)	C13—C14—H14	124.5
C3—C4—C5	121.01 (18)	N3—C14—H14	124.5
C3—C4—H4	119.5	N3—C15—N2	111.22 (17)
C5—C4—H4	119.5	N3—C15—H15	124.4
C6—C5—C4	121.79 (18)	N2—C15—H15	124.4
C6—C5—H5	119.1	C3—N1—C2	116.91 (16)
C4—C5—H5	119.1	C3—N1—C1	116.09 (16)
C5—C6—C7	119.71 (18)	C2—N1—C1	110.30 (16)

C5—C6—H6	120.1	C15—N2—C13	106.73 (16)
C7—C6—H6	120.1	C15—N2—S1	128.48 (14)
C6—C7—C12	118.84 (17)	C13—N2—S1	124.69 (13)
C6—C7—C8	124.31 (17)	C15—N3—C14	105.70 (17)
C12—C7—C8	116.79 (16)	O2—S1—O1	120.60 (9)
C9—C8—C7	122.21 (18)	O2—S1—N2	105.66 (8)
C9—C8—S1	114.88 (14)	O1—S1—N2	106.46 (9)
C7—C8—S1	122.91 (14)	O2—S1—C8	111.78 (9)
C8—C9—C10	119.99 (17)	O1—S1—C8	107.60 (8)
C8—C9—H9	120.0	N2—S1—C8	103.20 (8)
N1—C3—C4—C5	178.02 (18)	N2—C13—C14—N3	0.5 (2)
C12—C3—C4—C5	2.5 (3)	C4—C3—N1—C2	-15.4 (3)
C3—C4—C5—C6	0.5 (3)	C12—C3—N1—C2	160.21 (18)
C4—C5—C6—C7	-2.3 (3)	C4—C3—N1—C1	117.6 (2)
C5—C6—C7—C12	0.9 (3)	C12—C3—N1—C1	-66.8 (2)
C5—C6—C7—C8	-176.03 (19)	N3—C15—N2—C13	0.0 (2)
C6—C7—C8—C9	174.8 (2)	N3—C15—N2—S1	-176.46 (14)
C12—C7—C8—C9	-2.2 (3)	C14—C13—N2—C15	-0.3 (2)
C6—C7—C8—S1	-4.7 (3)	C14—C13—N2—S1	176.33 (14)
C12—C7—C8—S1	178.26 (14)	N2—C15—N3—C14	0.3 (2)
C7—C8—C9—C10	-0.8 (3)	C13—C14—N3—C15	-0.5 (2)
S1—C8—C9—C10	178.69 (15)	C15—N2—S1—O2	-14.58 (19)
C8—C9—C10—C11	2.4 (3)	C13—N2—S1—O2	169.57 (15)
C9—C10—C11—C12	-0.7 (3)	C15—N2—S1—O1	-143.94 (17)
C10—C11—C12—C7	-2.5 (3)	C13—N2—S1—O1	40.22 (18)
C10—C11—C12—C3	-177.88 (19)	C15—N2—S1—C8	102.91 (18)
C6—C7—C12—C11	-173.40 (18)	C13—N2—S1—C8	-72.93 (17)
C8—C7—C12—C11	3.8 (3)	C9—C8—S1—O2	-137.71 (15)
C6—C7—C12—C3	2.1 (3)	C7—C8—S1—O2	41.82 (18)
C8—C7—C12—C3	179.25 (17)	C9—C8—S1—O1	-3.13 (18)
C4—C3—C12—C11	171.62 (19)	C7—C8—S1—O1	176.40 (16)
N1—C3—C12—C11	-4.2 (3)	C9—C8—S1—N2	109.19 (16)
C4—C3—C12—C7	-3.7 (3)	C7—C8—S1—N2	-71.28 (17)
N1—C3—C12—C7	-179.52 (17)		

Hydrogen-bond geometry (\AA , $^\circ$)

$D-H\cdots A$	$D-H$	$H\cdots A$	$D\cdots A$	$D-H\cdots A$
C6—H6 \cdots O2	0.95	2.42	3.057 (2)	125
C15—H15 \cdots N3 ⁱ	0.95	2.45	3.395 (3)	173
C14—H14 \cdots O2 ⁱⁱ	0.95	2.45	3.358 (3)	161
C13—H13 \cdots N1 ⁱⁱⁱ	0.95	2.57	3.506 (2)	169
C10—H10 \cdots Cg ^{iv}	0.95	2.82	3.302 (2)	113

Symmetry codes: (i) $-x+1/2, y+1/2, z$; (ii) $x, y-1, z$; (iii) $-x, y-1/2, -z+1/2$; (iv) $x+1/2, -y-1/2, -z$.