

Acta Crystallographica Section E

Structure Reports

Online

ISSN 1600-5368

Dibutyl 2,2'-bipyridine-4,4'-dicarboxylate

Qianli Li,^a Rufen Zhang^{b*} and Yang Shi^b^aCollege of Chemistry and Chemical Engineering, Liaocheng University, Shandong 252059, People's Republic of China, and ^bDepartment of Chemistry, Liaocheng University, Liaocheng 252059, People's Republic of China

Correspondence e-mail: macl@lcu.edu.cn

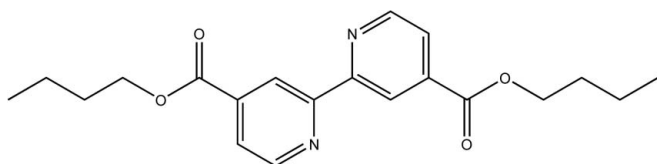
Received 3 January 2009; accepted 3 February 2009

Key indicators: single-crystal X-ray study; $T = 298$ K; mean $\sigma(\text{C}-\text{C}) = 0.002$ Å; R factor = 0.039; wR factor = 0.115; data-to-parameter ratio = 13.9.

In the title compound, $\text{C}_{20}\text{H}_{24}\text{N}_2\text{O}_4$, the molecule lies on a centre of symmetry and is approximately planar (r.m.s. deviation = 0.013 Å for 26 non-H atoms). The carboxylate group is inclined slightly to the neighbouring pyridine ring, forming a dihedral angle of 4.37 (2)°. The molecules form stacks with an interplanar separation of 3.547 (1) Å.

Related literature

For related structures, see: Stocco *et al.* (1996); Tynan *et al.* (2003); Fujihara *et al.* (2004).



Experimental

Crystal data

 $\text{C}_{20}\text{H}_{24}\text{N}_2\text{O}_4$ $M_r = 356.41$

Monoclinic, $P2_1/c$
 $a = 7.4183$ (9) Å
 $b = 8.2829$ (10) Å
 $c = 15.375$ (2) Å
 $\beta = 93.273$ (1)°
 $V = 943.2$ (2) Å³

$Z = 2$
 Mo $K\alpha$ radiation
 $\mu = 0.09$ mm⁻¹
 $T = 298$ (2) K
 $0.40 \times 0.30 \times 0.15$ mm

Data collection

Bruker SMART CCD diffractometer
 Absorption correction: multi-scan (*SADABS*; Sheldrick, 2003)
 $T_{\min} = 0.966$, $T_{\max} = 0.987$

4552 measured reflections
 1654 independent reflections
 1135 reflections with $I > 2\sigma(I)$
 $R_{\text{int}} = 0.021$

Refinement

$R[F^2 > 2\sigma(F^2)] = 0.039$
 $wR(F^2) = 0.115$
 $S = 1.03$
 1654 reflections

119 parameters
 H-atom parameters constrained
 $\Delta\rho_{\text{max}} = 0.15$ e Å⁻³
 $\Delta\rho_{\text{min}} = -0.13$ e Å⁻³

Data collection: *SMART* (Bruker, 2000); cell refinement: *SAINTE* (Bruker, 2000); data reduction: *SAINTE*; program(s) used to solve structure: *SHELXS97* (Sheldrick, 2008); program(s) used to refine structure: *SHELXL97* (Sheldrick, 2008); molecular graphics: *SHELXTL* (Sheldrick, 2008); software used to prepare material for publication: *SHELXTL*.

The authors thank the National Natural Science Foundation of China (20741008) for financial support.

Supplementary data and figures for this paper are available from the IUCr electronic archives (Reference: BI2343).

References

- Bruker (2000). *SMART* and *SAINTE*. Bruker AXS Inc., Madison, Wisconsin, USA.
 Fujihara, T., Kobayashi, A. & Nagasawa, A. (2004). *Acta Cryst.* **E60**, o353–o355.
 Sheldrick, G. M. (2003). *SADABS*. University of Göttingen, Germany.
 Sheldrick, G. M. (2008). *Acta Cryst.* **A64**, 112–122.
 Stocco, G., Guli, G., Girasolo, M. A., Bruno, G., Nicolò, F. & Scopelliti, R. (1996). *Acta Cryst.* **C52**, 829–832.
 Tynan, E., Jensen, P., Kruger, P. E., Lees, A. C. & Nieuwenhuyzen, M. (2003). *Dalton Trans.* pp. 1223–1228.

supporting information

Acta Cryst. (2009). E65, o478 [doi:10.1107/S1600536809003997]

Dibutyl 2,2'-bipyridine-4,4'-dicarboxylate

Qianli Li, Rufen Zhang and Yang Shi

S1. Comment

The crystal structure of 2,2'-bipyridine-4,4'-dicarboxylic acid (H₂dcbp) has been reported by Tynan *et al.* (2003), and a polymeric structure containing trimethyltin has been reported by Stocco *et al.* (1996). Herein, we have reacted H₂dcbp with tri-*n*-butyltin chloride. Unexpectedly, we obtained the centrosymmetric title compound only. The C2—N1—C6 bond angle of 117.47 (15)° is similar to those for the free pyridine (Fujihara *et al.*, 2004). The dihedral angle between the pyridine ring and the carboxylate group [C1,O1,O2] is 4.37 (2)°. The bond lengths of C1—O1 and C7—O1 are 1.332 (2) and 1.458 (2) Å, respectively.

S2. Experimental

The reaction was carried out under a nitrogen atmosphere. 2,2'-Bipyridine-4,4'-dicarboxylic acid (1 mmol) and sodium ethoxide (2 mmol) were added to a stirred solution of benzene (30 ml) in a Schlenk flask and stirred for 0.5 h. Tri-*n*-butyltin chloride (2 mmol) was then added and the reaction mixture was stirred for 12 h at 353 K. The resulting clear solution was evaporated under vacuum. The product was crystallized from dichloromethane to yield colourless blocks (yield 83%. m.p. 435 K). Elemental analysis calculated: C, 67.10; H, 6.79; N, 7.86 %; found: C, 66.92; H, 6.95; N, 7.59 %.

S3. Refinement

H atoms were placed geometrically and treated as riding on their parent atoms with C—H = 0.93 Å (pyridine), 0.97 Å (methylene) or 0.96 Å (methyl), and with $U_{\text{iso}}(\text{H}) = 1.2$ or $1.5U_{\text{eq}}(\text{C})$.

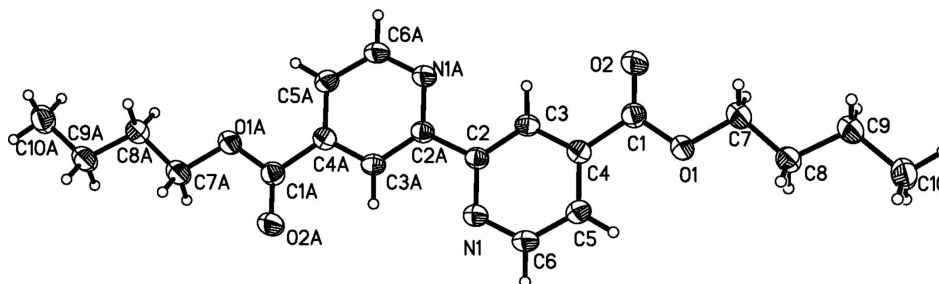


Figure 1

Molecular structure showing 30% probability displacement ellipsoids for non-H atoms.

Dibutyl 2,2'-bipyridine-4,4'-dicarboxylate

Crystal data

C₂₀H₂₄N₂O₄ $M_r = 356.41$ Monoclinic, $P2_1/c$

Hall symbol: -P 2ybc

 $a = 7.4183$ (9) Å $b = 8.2829$ (10) Å $c = 15.375$ (2) Å $\beta = 93.273$ (1)° $V = 943.2$ (2) Å³ $Z = 2$ $F(000) = 380$ $D_x = 1.255$ Mg m⁻³Mo $K\alpha$ radiation, $\lambda = 0.71073$ Å

Cell parameters from 1638 reflections

 $\theta = 2.7$ – 26.7 ° $\mu = 0.09$ mm⁻¹ $T = 298$ K

Block, colorless

 $0.40 \times 0.30 \times 0.15$ mm

Data collection

Bruker SMART CCD

diffractometer

Radiation source: fine-focus sealed tube

Graphite monochromator

 φ and ω scansAbsorption correction: multi-scan
(SADABS; Sheldrick, 2003) $T_{\min} = 0.966$, $T_{\max} = 0.987$

4552 measured reflections

1654 independent reflections

1135 reflections with $I > 2\sigma(I)$ $R_{\text{int}} = 0.021$ $\theta_{\max} = 25.0$ °, $\theta_{\min} = 2.7$ ° $h = -8 \rightarrow 8$ $k = -9 \rightarrow 8$ $l = -18 \rightarrow 18$

Refinement

Refinement on F^2

Least-squares matrix: full

 $R[F^2 > 2\sigma(F^2)] = 0.039$ $wR(F^2) = 0.115$ $S = 1.03$

1654 reflections

119 parameters

0 restraints

Primary atom site location: structure-invariant
direct methodsSecondary atom site location: difference Fourier
mapHydrogen site location: inferred from
neighbouring sites

H-atom parameters constrained

 $w = 1/[\sigma^2(F_o^2) + (0.0497P)^2 + 0.199P]$ where $P = (F_o^2 + 2F_c^2)/3$ $(\Delta/\sigma)_{\max} < 0.001$ $\Delta\rho_{\max} = 0.15$ e Å⁻³ $\Delta\rho_{\min} = -0.13$ e Å⁻³

Special details

Geometry. All e.s.d.'s (except the e.s.d. in the dihedral angle between two l.s. planes) are estimated using the full covariance matrix. The cell e.s.d.'s are taken into account individually in the estimation of e.s.d.'s in distances, angles and torsion angles; correlations between e.s.d.'s in cell parameters are only used when they are defined by crystal symmetry. An approximate (isotropic) treatment of cell e.s.d.'s is used for estimating e.s.d.'s involving l.s. planes.

Refinement. Refinement of F^2 against ALL reflections. The weighted R -factor wR and goodness of fit S are based on F^2 , conventional R -factors R are based on F , with F set to zero for negative F^2 . The threshold expression of $F^2 > \sigma(F^2)$ is used only for calculating R -factors(gt) etc. and is not relevant to the choice of reflections for refinement. R -factors based on F^2 are statistically about twice as large as those based on F , and R -factors based on ALL data will be even larger.

Fractional atomic coordinates and isotropic or equivalent isotropic displacement parameters (Å²)

| | x | y | z | $U_{\text{iso}}^*/U_{\text{eq}}$ |
|----|--------------|--------------|--------------|----------------------------------|
| N1 | 0.8610 (2) | 0.42720 (18) | -0.09153 (9) | 0.0544 (4) |
| O1 | 0.38773 (17) | 0.20544 (16) | 0.09033 (7) | 0.0619 (4) |
| O2 | 0.57083 (19) | 0.32666 (19) | 0.19126 (8) | 0.0755 (5) |
| C1 | 0.5333 (2) | 0.2904 (2) | 0.11660 (11) | 0.0539 (5) |

| | | | | |
|------|-------------|--------------|---------------|------------|
| C2 | 0.9120 (2) | 0.45867 (19) | -0.00815 (10) | 0.0451 (4) |
| C3 | 0.8062 (2) | 0.4163 (2) | 0.06010 (10) | 0.0481 (4) |
| H3 | 0.8437 | 0.4419 | 0.1172 | 0.058* |
| C4 | 0.6451 (2) | 0.3358 (2) | 0.04254 (10) | 0.0469 (4) |
| C5 | 0.5929 (2) | 0.3018 (2) | -0.04371 (11) | 0.0540 (5) |
| H5 | 0.4857 | 0.2474 | -0.0581 | 0.065* |
| C6 | 0.7040 (3) | 0.3510 (2) | -0.10735 (11) | 0.0588 (5) |
| H6 | 0.6674 | 0.3297 | -0.1651 | 0.071* |
| C7 | 0.2671 (3) | 0.1586 (3) | 0.15756 (12) | 0.0706 (6) |
| H7A | 0.2245 | 0.2538 | 0.1869 | 0.085* |
| H7B | 0.3307 | 0.0905 | 0.2005 | 0.085* |
| C8 | 0.1112 (2) | 0.0691 (2) | 0.11506 (11) | 0.0567 (5) |
| H8A | 0.1554 | -0.0272 | 0.0873 | 0.068* |
| H8B | 0.0530 | 0.1364 | 0.0701 | 0.068* |
| C9 | -0.0258 (3) | 0.0211 (3) | 0.17920 (13) | 0.0760 (6) |
| H9A | -0.0695 | 0.1177 | 0.2067 | 0.091* |
| H9B | 0.0335 | -0.0451 | 0.2244 | 0.091* |
| C10 | -0.1854 (3) | -0.0711 (3) | 0.13862 (14) | 0.0768 (6) |
| H10A | -0.2392 | -0.0103 | 0.0907 | 0.115* |
| H10B | -0.2729 | -0.0876 | 0.1814 | 0.115* |
| H10C | -0.1455 | -0.1737 | 0.1180 | 0.115* |

Atomic displacement parameters (Å²)

| | U^{11} | U^{22} | U^{33} | U^{12} | U^{13} | U^{23} |
|-----|-------------|-------------|-------------|--------------|-------------|-------------|
| N1 | 0.0561 (9) | 0.0655 (10) | 0.0412 (8) | -0.0060 (8) | -0.0003 (7) | -0.0020 (7) |
| O1 | 0.0569 (8) | 0.0808 (9) | 0.0486 (7) | -0.0149 (7) | 0.0077 (6) | 0.0001 (6) |
| O2 | 0.0741 (10) | 0.1073 (12) | 0.0448 (7) | -0.0210 (8) | 0.0004 (7) | -0.0002 (7) |
| C1 | 0.0511 (11) | 0.0601 (12) | 0.0500 (11) | -0.0004 (9) | -0.0006 (9) | 0.0040 (9) |
| C2 | 0.0488 (9) | 0.0461 (10) | 0.0402 (9) | 0.0038 (8) | -0.0008 (7) | 0.0024 (7) |
| C3 | 0.0500 (10) | 0.0538 (11) | 0.0396 (9) | 0.0026 (8) | -0.0048 (8) | 0.0012 (8) |
| C4 | 0.0467 (10) | 0.0489 (10) | 0.0449 (9) | 0.0053 (8) | 0.0012 (7) | 0.0029 (8) |
| C5 | 0.0516 (11) | 0.0598 (11) | 0.0499 (10) | -0.0042 (9) | -0.0028 (8) | -0.0042 (9) |
| C6 | 0.0627 (12) | 0.0733 (13) | 0.0396 (9) | -0.0066 (10) | -0.0036 (9) | -0.0054 (9) |
| C7 | 0.0682 (13) | 0.0945 (16) | 0.0497 (11) | -0.0170 (11) | 0.0091 (10) | 0.0039 (11) |
| C8 | 0.0573 (11) | 0.0626 (12) | 0.0506 (10) | -0.0001 (9) | 0.0064 (9) | 0.0042 (9) |
| C9 | 0.0731 (14) | 0.1050 (17) | 0.0507 (11) | -0.0187 (13) | 0.0097 (10) | 0.0063 (11) |
| C10 | 0.0684 (14) | 0.0923 (16) | 0.0705 (13) | -0.0141 (12) | 0.0096 (11) | 0.0132 (12) |

Geometric parameters (Å, °)

| | | | |
|-------|-----------|--------|-----------|
| N1—C6 | 1.335 (2) | C6—H6 | 0.930 |
| N1—C2 | 1.341 (2) | C7—C8 | 1.493 (3) |
| O1—C1 | 1.332 (2) | C7—H7A | 0.970 |
| O1—C7 | 1.458 (2) | C7—H7B | 0.970 |
| O2—C1 | 1.204 (2) | C8—C9 | 1.509 (3) |
| C1—C4 | 1.495 (2) | C8—H8A | 0.970 |
| C2—C3 | 1.391 (2) | C8—H8B | 0.970 |

| | | | |
|---------------------------|--------------|---------------|--------------|
| C2—C2 ⁱ | 1.483 (3) | C9—C10 | 1.513 (3) |
| C3—C4 | 1.381 (2) | C9—H9A | 0.970 |
| C3—H3 | 0.930 | C9—H9B | 0.970 |
| C4—C5 | 1.389 (2) | C10—H10A | 0.960 |
| C5—C6 | 1.377 (2) | C10—H10B | 0.960 |
| C5—H5 | 0.930 | C10—H10C | 0.960 |
| C6—N1—C2 | 117.47 (15) | C8—C7—H7A | 110.0 |
| C1—O1—C7 | 116.43 (14) | O1—C7—H7B | 110.0 |
| O2—C1—O1 | 124.07 (17) | C8—C7—H7B | 110.0 |
| O2—C1—C4 | 123.74 (17) | H7A—C7—H7B | 108.4 |
| O1—C1—C4 | 112.18 (15) | C7—C8—C9 | 112.24 (16) |
| N1—C2—C3 | 122.14 (15) | C7—C8—H8A | 109.2 |
| N1—C2—C2 ⁱ | 116.64 (18) | C9—C8—H8A | 109.2 |
| C3—C2—C2 ⁱ | 121.23 (17) | C7—C8—H8B | 109.2 |
| C4—C3—C2 | 119.56 (15) | C9—C8—H8B | 109.2 |
| C4—C3—H3 | 120.2 | H8A—C8—H8B | 107.9 |
| C2—C3—H3 | 120.2 | C8—C9—C10 | 113.81 (17) |
| C3—C4—C5 | 118.40 (16) | C8—C9—H9A | 108.8 |
| C3—C4—C1 | 118.96 (15) | C10—C9—H9A | 108.8 |
| C5—C4—C1 | 122.64 (16) | C8—C9—H9B | 108.8 |
| C6—C5—C4 | 118.21 (17) | C10—C9—H9B | 108.8 |
| C6—C5—H5 | 120.9 | H9A—C9—H9B | 107.7 |
| C4—C5—H5 | 120.9 | C9—C10—H10A | 109.5 |
| N1—C6—C5 | 124.20 (16) | C9—C10—H10B | 109.5 |
| N1—C6—H6 | 117.9 | H10A—C10—H10B | 109.5 |
| C5—C6—H6 | 117.9 | C9—C10—H10C | 109.5 |
| O1—C7—C8 | 108.26 (15) | H10A—C10—H10C | 109.5 |
| O1—C7—H7A | 110.0 | H10B—C10—H10C | 109.5 |
| C7—O1—C1—O2 | 1.5 (3) | O2—C1—C4—C5 | -175.64 (18) |
| C7—O1—C1—C4 | -178.51 (15) | O1—C1—C4—C5 | 4.4 (2) |
| C6—N1—C2—C3 | -0.8 (3) | C3—C4—C5—C6 | -0.4 (3) |
| C6—N1—C2—C2 ⁱ | 179.14 (18) | C1—C4—C5—C6 | 178.98 (16) |
| N1—C2—C3—C4 | 1.5 (3) | C2—N1—C6—C5 | -0.6 (3) |
| C2 ⁱ —C2—C3—C4 | -178.40 (18) | C4—C5—C6—N1 | 1.2 (3) |
| C2—C3—C4—C5 | -0.9 (2) | C1—O1—C7—C8 | 178.49 (16) |
| C2—C3—C4—C1 | 179.76 (15) | O1—C7—C8—C9 | -177.70 (17) |
| O2—C1—C4—C3 | 3.7 (3) | C7—C8—C9—C10 | -179.62 (19) |
| O1—C1—C4—C3 | -176.26 (15) | | |

Symmetry code: (i) $-x+2, -y+1, -z$.