

Acta Crystallographica Section E

## Structure Reports

Online

ISSN 1600-5368

## 2-(2-Iodobenzenesulfonamido)acetic acid

 Muhammad Nadeem Arshad,<sup>a\*</sup> Islam Ullah Khan,<sup>a</sup>  
 Muhammad Shafiq<sup>a</sup> and Azam Mukhtar<sup>b</sup>
<sup>a</sup>Materials Chemistry Laboratory, Department of Chemistry, GC University, Lahore, Pakistan, and <sup>b</sup>Institute for Chemical Technology and Analytics, Vienna University of Technology, Vienna, Austria

Correspondence e-mail: mnachemist@hotmail.com

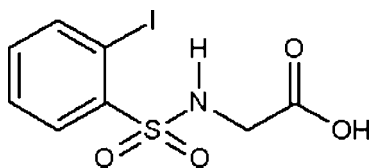
Received 24 January 2009; accepted 13 February 2009

 Key indicators: single-crystal X-ray study;  $T = 296$  K; mean  $\sigma(\text{C}-\text{C}) = 0.005$  Å;  $R$  factor = 0.030;  $wR$  factor = 0.086; data-to-parameter ratio = 19.6.

The title compound,  $\text{C}_8\text{H}_8\text{INO}_4\text{S}$ , is a halogenated sulfonamide, a medically important class of organic compounds. In the crystal structure, intermolecular  $\text{O}-\text{H}\cdots\text{O}$  hydrogen bonds involving the carboxylic acid groups form characteristic centrosymmetric dimers. These dimers are further linked through centrosymmetric dimeric  $\text{N}-\text{H}\cdots\text{O}$  interactions involving the amido H atom and a sulfonyl O atom. This leads to the formation of a ribbon-like polymer structure propagating in the  $b$  direction.

### Related literature

For background on sulfonamides, or sulfa drugs, see: Pandya *et al.* (2003). For the structure of the non-halogenated analogue, see: Arshad *et al.* (2008*b*). For the synthesis of the title compound, see: Deng & Mani (2006). For details of related structures: see Arshad *et al.* (2008*a,c*). For background on related thiazine heterocycles, see: Arshad *et al.* (2008*d*). For standard bond-length data, see: Allen *et al.* (1987).



### Experimental

#### Crystal data

 $\text{C}_8\text{H}_8\text{INO}_4\text{S}$   
 $M_r = 341.11$   
 Triclinic,  $P\bar{1}$   
 $a = 5.5877$  (2) Å  
 $b = 8.0145$  (2) Å

 $c = 12.3584$  (4) Å  
 $\alpha = 80.923$  (2)°  
 $\beta = 83.398$  (2)°  
 $\gamma = 88.038$  (2)°  
 $V = 542.81$  (3) Å<sup>3</sup>
 $Z = 2$   
 Mo  $K\alpha$  radiation  
 $\mu = 3.14$  mm<sup>-1</sup>
 $T = 296$  K  
 $0.22 \times 0.10 \times 0.06$  mm

#### Data collection

 Bruker Kappa APEXII CCD diffractometer  
 Absorption correction: multi-scan (SADABS; Bruker, 2005)  
 $T_{\min} = 0.691$ ,  $T_{\max} = 0.834$ 

 11492 measured reflections  
 2691 independent reflections  
 2297 reflections with  $I > 2\sigma(I)$   
 $R_{\text{int}} = 0.028$ 

#### Refinement

 $R[F^2 > 2\sigma(F^2)] = 0.030$   
 $wR(F^2) = 0.086$   
 $S = 1.02$   
 2691 reflections

 137 parameters  
 H-atom parameters constrained  
 $\Delta\rho_{\max} = 1.43$  e Å<sup>-3</sup>  
 $\Delta\rho_{\min} = -1.09$  e Å<sup>-3</sup>
**Table 1**

Hydrogen-bond geometry (Å, °).

$D-\text{H}\cdots A$	$D-\text{H}$	$\text{H}\cdots A$	$D\cdots A$	$D-\text{H}\cdots A$
$\text{N1}-\text{H1N}\cdots\text{O1}^i$	0.86	2.47	3.142 (3)	135
$\text{O2}-\text{H2O}\cdots\text{O1}^ii$	0.82	1.86	2.676 (4)	176

 Symmetry codes: (i)  $-x + 1, -y + 1, -z + 1$ ; (ii)  $-x + 1, -y + 2, -z + 1$ .

Data collection: APEX2 (Bruker, 2007); cell refinement: SAINT (Bruker, 2007); data reduction: SAINT; program(s) used to solve structure: SHELXS97 (Sheldrick, 2008); program(s) used to refine structure: SHELXL97 (Sheldrick, 2008); molecular graphics: ORTEP-3 for Windows (Farrugia, 1997) and PLATON (Spek, 2009); software used to prepare material for publication: WinGX (Farrugia, 1999) and PLATON.

MNA acknowledges the Higher Education Commission, Pakistan, for providing a PhD Scholarship under PIN 042-120607-PS2-183.

Supplementary data and figures for this paper are available from the IUCr electronic archives (Reference: SU2093).

### References

- Allen, F. H., Kennard, O., Watson, D. G., Brammer, L., Orpen, A. G. & Taylor, R. (1987). *J. Chem. Soc. Perkin Trans. 2*, pp. S1–S19.
- Arshad, M. N., Khan, I. U., Ahmad, S., Shafiq, M. & Stoeckli-Evans, H. (2008*a*). *Acta Cryst.* **E64**, m994.
- Arshad, M. N., Khan, I. U. & Zia-ur-Rehman, M. (2008*b*). *Acta Cryst.* **E64**, o2283–o2284.
- Arshad, M. N., Tahir, M. N., Khan, I. U., Shafiq, M. & Siddiqui, W. A. (2008*c*). *Acta Cryst.* **E64**, m1628.
- Arshad, M. N., Tahir, M. N., Khan, I. U., Shafiq, M. & Siddiqui, W. A. (2008*d*). *Acta Cryst.* **E64**, o2045.
- Bruker (2005). SADABS. Bruker AXS Inc., Madison, Wisconsin, USA.
- Bruker (2007). APEX2 and SAINT. Bruker AXS Inc., Madison, Wisconsin, USA.
- Deng, X. & Mani, N. S. (2006). *Green Chem.* **8**, 835–838.
- Farrugia, L. J. (1997). *J. Appl. Cryst.* **30**, 565.
- Farrugia, L. J. (1999). *J. Appl. Cryst.* **32**, 837–838.
- Pandya, R., Murashima, T., Tedeschi, L. & Barrett, A. G. M. (2003). *J. Org. Chem.* **68**, 8274–8276.
- Sheldrick, G. M. (2008). *Acta Cryst.* **A64**, 112–122.
- Spek, A. L. (2009). *Acta Cryst.* **D65**, 148–155.

## supporting information

*Acta Cryst.* (2009). E65, o549 [doi:10.1107/S1600536809005248]

## 2-(2-Iodobenzenesulfonamido)acetic acid

Muhammad Nadeem Arshad, Islam Ullah Khan, Muhammad Shafiq and Azam Mukhtar

### S1. Comment

Sulfonamides, commonly known as sulfa drugs, belong to a class of organic compounds which have widespread applications in Medicinal Chemistry for curing bacterial infections (Pandya *et al.*, 2003). As a continuation of our studies on the synthesis of thiazine related compounds (Arshad *et al.*, 2008*a,b,c,d*) we present here the structure of the title compound.

The molecular structure of the title compound is illustrated in Fig. 1. We have previously reported on the crystal structures of the non-halogenated analogue of the title compound, 2-(phenylsulfonamido)acetic acid, (Arshad *et al.*, 2008*b*), and the K<sup>+</sup> and Na<sup>+</sup> salts of 2-iodobenzenesulfonates (Arshad *et al.*, 2008*a,c*). The bond lengths and angles in the title compound are similar to those reported there and are within normal ranges (Allen *et al.*, 1987).

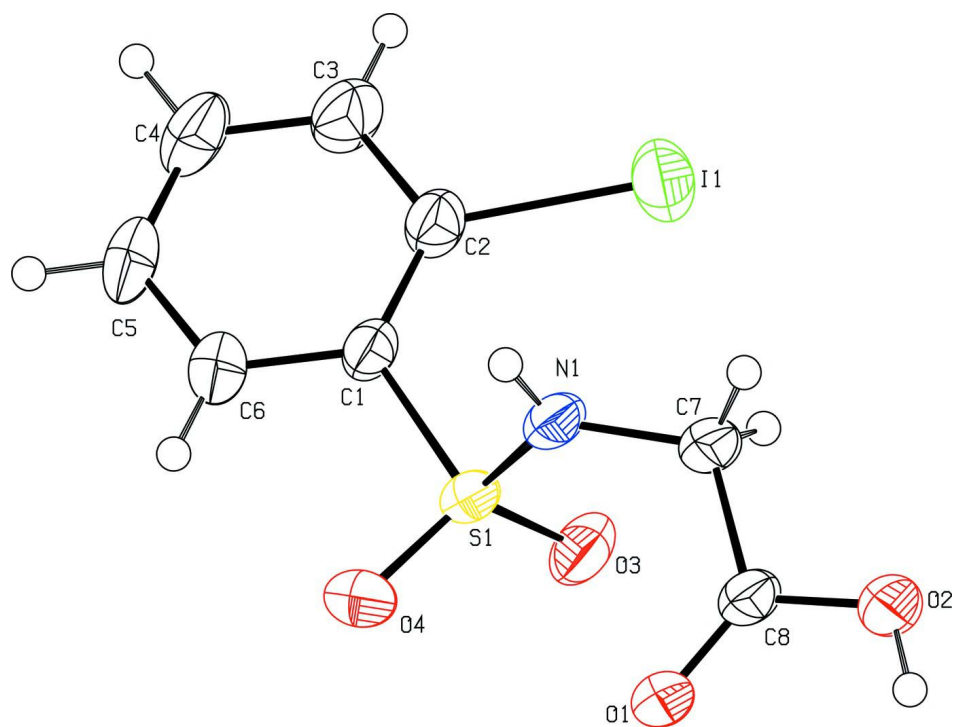
In the crystal structure intermolecular O—H...O hydrogen bonds involving the carboxylic acid groups form characteristic centrosymmetric dimers. These dimers are further linked through centrosymmetric intermolecular N—H...O interactions involving the amido H atoms and a sulfonyl O atom (Fig. 2). This leads to the formation of a ribbon-like polymer structure propagating along the *b* axis. This arrangement is very similar to that observed in the non-halogenated analogue mentioned above.

### S2. Experimental

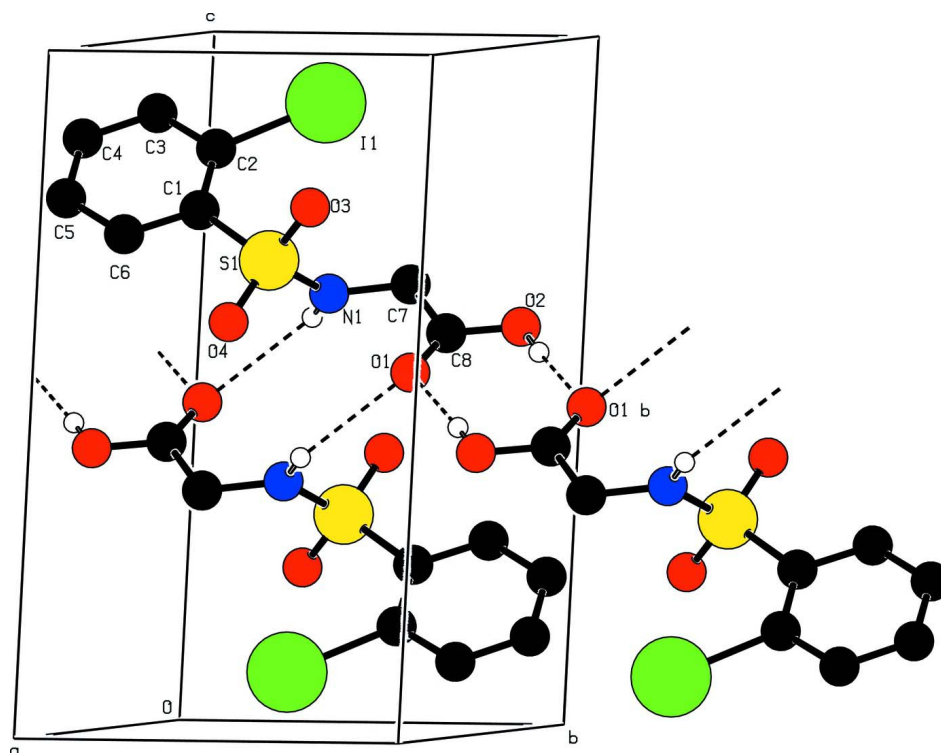
The title compound was synthesized following the literature method (Deng & Mani, 2006). Glycine methyl ester hydrochloride (207 mg, 1.653 mmol) was dissolved in distilled water (5 ml). The pH of the solution was maintained at 8–9 using 1*M*, Na<sub>2</sub>CO<sub>3</sub> solution. 2-Iodo benzene sulfonyl chloride (500 mg, 1.653 mmol) was then added to the solution, which was stirred at room temperature until all the 2-iodo benzene sulfonyl chloride had been consumed. During the reaction the pH was again strictly maintained at 8–9 using 1*M*, Na<sub>2</sub>CO<sub>3</sub>. On completion of the reaction the pH was adjusted 1–2, using 1*N* HCl under vigorous stirring. The precipitate obtained was filtered off, washed with distilled water and dried. Crystals of the title compound were obtained by recrystallisation from methanol.

### S3. Refinement

The O, N and C-bound H atoms were included in calculated positions and treated as riding: O—H = 0.82 Å, N—H = 0.86 Å, C—H = 0.93–0.97 Å, with  $U_{\text{iso}}(\text{H}) = 1.5U_{\text{eq}}(\text{parent O atom})$  and  $= 1.2U_{\text{eq}}(\text{parent C and N atom})$ .

**Figure 1**

Molecular structure of the title compound showing the atom labelling scheme. The thermal ellipsoids are drawn at the 50% probability level.



**Figure 2**

Crystal packing of the title compound, viewed along the axis, showing the intermolecular hydrogen bonds as dashed lines.

## 2-(2-Iodobenzenesulfonamido)acetic acid

### Crystal data

$C_8H_8INO_4S$

$M_r = 341.11$

Triclinic,  $P\bar{1}$

Hall symbol:  $-P\ 1$

$a = 5.5877\ (2)\ \text{\AA}$

$b = 8.0145\ (2)\ \text{\AA}$

$c = 12.3584\ (4)\ \text{\AA}$

$\alpha = 80.923\ (2)^\circ$

$\beta = 83.398\ (2)^\circ$

$\gamma = 88.038\ (2)^\circ$

$V = 542.81\ (3)\ \text{\AA}^3$

$Z = 2$

$F(000) = 328$

$D_x = 2.087\ \text{Mg m}^{-3}$

Mo  $K\alpha$  radiation,  $\lambda = 0.71073\ \text{\AA}$

Cell parameters from 6313 reflections

$\theta = 2.6\text{--}28.3^\circ$

$\mu = 3.14\ \text{mm}^{-1}$

$T = 296\ \text{K}$

Needle-like, light brown

$0.22 \times 0.10 \times 0.06\ \text{mm}$

### Data collection

Bruker Kappa APEXII CCD

diffractometer

Radiation source: fine-focus sealed tube

Graphite monochromator

$\varphi$  and  $\omega$  scans

Absorption correction: multi-scan

(*SADABS*; Bruker, 2005)

$T_{\min} = 0.691$ ,  $T_{\max} = 0.834$

11492 measured reflections

2691 independent reflections

2297 reflections with  $I > 2\sigma(I)$

$R_{\text{int}} = 0.028$

$\theta_{\max} = 28.3^\circ$ ,  $\theta_{\min} = 2.6^\circ$

$h = -7 \rightarrow 7$

$k = -10 \rightarrow 10$

$l = -16 \rightarrow 16$

Refinement

Refinement on  $F^2$   
 Least-squares matrix: full  
 $R[F^2 > 2\sigma(F^2)] = 0.030$   
 $wR(F^2) = 0.086$   
 $S = 1.02$   
 2691 reflections  
 137 parameters  
 0 restraints  
 Primary atom site location: structure-invariant  
 direct methods

Secondary atom site location: difference Fourier  
 map  
 Hydrogen site location: inferred from  
 neighbouring sites  
 H-atom parameters constrained  
 $w = 1/[\sigma^2(F_o^2) + (0.0454P)^2 + 0.6546P]$   
 where  $P = (F_o^2 + 2F_c^2)/3$   
 $(\Delta/\sigma)_{\max} = 0.001$   
 $\Delta\rho_{\max} = 1.43 \text{ e } \text{\AA}^{-3}$   
 $\Delta\rho_{\min} = -1.09 \text{ e } \text{\AA}^{-3}$

Special details

**Geometry.** Bond distances, angles etc. have been calculated using the rounded fractional coordinates. All su's are estimated from the variances of the (full) variance-covariance matrix. The cell esds are taken into account in the estimation of distances, angles and torsion angles

**Refinement.** Refinement of  $F^2$  against ALL reflections. The weighted  $R$ -factor  $wR$  and goodness of fit  $S$  are based on  $F^2$ , conventional  $R$ -factors  $R$  are based on  $F$ , with  $F$  set to zero for negative  $F^2$ . The threshold expression of  $F^2 > \sigma(F^2)$  is used only for calculating  $R$ -factors(gt) etc. and is not relevant to the choice of reflections for refinement.  $R$ -factors based on  $F^2$  are statistically about twice as large as those based on  $F$ , and  $R$ -factors based on ALL data will be even larger.

Fractional atomic coordinates and isotropic or equivalent isotropic displacement parameters ( $\text{\AA}^2$ )

	$x$	$y$	$z$	$U_{\text{iso}}^*/U_{\text{eq}}$
I1	0.10590 (5)	0.34414 (3)	0.90179 (2)	0.0537 (1)
S1	0.59293 (13)	0.42594 (9)	0.68657 (7)	0.0327 (2)
O1	0.5522 (4)	0.7909 (3)	0.5250 (2)	0.0405 (7)
O2	0.2240 (4)	0.9320 (3)	0.5837 (3)	0.0506 (8)
O3	0.6165 (5)	0.5362 (3)	0.7649 (2)	0.0447 (8)
O4	0.7874 (4)	0.4121 (3)	0.6022 (2)	0.0448 (8)
N1	0.3478 (5)	0.4818 (3)	0.6322 (2)	0.0348 (8)
C1	0.5418 (5)	0.2165 (4)	0.7568 (3)	0.0319 (8)
C2	0.3582 (6)	0.1730 (4)	0.8409 (3)	0.0376 (9)
C3	0.3352 (8)	0.0057 (4)	0.8907 (3)	0.0496 (11)
C4	0.4944 (8)	-0.1169 (4)	0.8574 (3)	0.0520 (13)
C5	0.6787 (8)	-0.0735 (4)	0.7758 (4)	0.0514 (11)
C6	0.7032 (7)	0.0926 (4)	0.7254 (3)	0.0434 (10)
C7	0.2290 (6)	0.6417 (4)	0.6433 (3)	0.0371 (9)
C8	0.3550 (6)	0.7946 (4)	0.5770 (3)	0.0346 (9)
H1N	0.28640	0.41450	0.59550	0.0420*
H2O	0.29800	1.01380	0.54930	0.0760*
H3	0.21160	-0.02410	0.94690	0.0600*
H4	0.47630	-0.22890	0.89050	0.0630*
H5	0.78740	-0.15580	0.75430	0.0620*
H6	0.82870	0.12170	0.67000	0.0520*
H7A	0.21220	0.65480	0.72050	0.0440*
H7B	0.06810	0.63890	0.62140	0.0440*

*Atomic displacement parameters (Å<sup>2</sup>)*

	$U^{11}$	$U^{22}$	$U^{33}$	$U^{12}$	$U^{13}$	$U^{23}$
I1	0.0578 (2)	0.0421 (2)	0.0529 (2)	0.0132 (1)	0.0143 (1)	0.0003 (1)
S1	0.0304 (3)	0.0232 (3)	0.0442 (4)	-0.0049 (3)	-0.0027 (3)	-0.0042 (3)
O1	0.0375 (12)	0.0252 (10)	0.0551 (14)	-0.0047 (9)	0.0058 (10)	-0.0016 (9)
O2	0.0413 (13)	0.0247 (11)	0.0772 (18)	0.0014 (9)	0.0106 (12)	0.0057 (11)
O3	0.0498 (14)	0.0282 (11)	0.0602 (16)	-0.0014 (10)	-0.0147 (12)	-0.0130 (10)
O4	0.0337 (11)	0.0411 (13)	0.0565 (15)	-0.0076 (10)	0.0046 (10)	-0.0034 (11)
N1	0.0353 (13)	0.0217 (11)	0.0466 (15)	-0.0039 (9)	-0.0051 (11)	-0.0016 (10)
C1	0.0348 (15)	0.0227 (12)	0.0391 (16)	0.0011 (11)	-0.0065 (12)	-0.0059 (11)
C2	0.0442 (17)	0.0279 (14)	0.0394 (17)	0.0028 (12)	-0.0029 (13)	-0.0035 (12)
C3	0.063 (2)	0.0326 (17)	0.048 (2)	-0.0015 (15)	0.0038 (17)	0.0022 (14)
C4	0.075 (3)	0.0260 (16)	0.054 (2)	0.0038 (16)	-0.009 (2)	-0.0024 (14)
C5	0.062 (2)	0.0287 (16)	0.065 (2)	0.0135 (15)	-0.0084 (19)	-0.0137 (16)
C6	0.0454 (18)	0.0322 (16)	0.052 (2)	0.0049 (13)	0.0002 (15)	-0.0102 (14)
C7	0.0333 (15)	0.0247 (13)	0.0495 (18)	-0.0027 (11)	0.0011 (13)	0.0018 (12)
C8	0.0343 (15)	0.0229 (13)	0.0449 (17)	-0.0033 (11)	-0.0040 (13)	-0.0002 (12)

*Geometric parameters (Å, °)*

I1—C2	2.094 (3)	C2—C3	1.388 (5)
S1—O3	1.429 (3)	C3—C4	1.382 (5)
S1—O4	1.431 (2)	C4—C5	1.369 (6)
S1—N1	1.613 (3)	C5—C6	1.382 (5)
S1—C1	1.780 (3)	C7—C8	1.509 (5)
O1—C8	1.212 (4)	C3—H3	0.9300
O2—C8	1.310 (4)	C4—H4	0.9300
O2—H2O	0.8200	C5—H5	0.9300
N1—C7	1.442 (4)	C6—H6	0.9300
N1—H1N	0.8600	C7—H7A	0.9700
C1—C6	1.389 (5)	C7—H7B	0.9700
C1—C2	1.385 (5)		
O3—S1—O4	118.92 (15)	C1—C6—C5	120.5 (4)
O3—S1—N1	106.70 (15)	N1—C7—C8	115.3 (3)
O3—S1—C1	109.54 (16)	O1—C8—O2	124.4 (3)
O4—S1—N1	110.20 (14)	O1—C8—C7	124.5 (3)
O4—S1—C1	105.65 (15)	O2—C8—C7	111.1 (3)
N1—S1—C1	105.02 (13)	C2—C3—H3	120.00
C8—O2—H2O	109.00	C4—C3—H3	120.00
S1—N1—C7	121.8 (2)	C3—C4—H4	120.00
C7—N1—H1N	119.00	C5—C4—H4	120.00
S1—N1—H1N	119.00	C4—C5—H5	120.00
C2—C1—C6	119.5 (3)	C6—C5—H5	120.00
S1—C1—C6	116.4 (3)	C1—C6—H6	120.00
S1—C1—C2	124.1 (2)	C5—C6—H6	120.00
I1—C2—C1	124.6 (2)	N1—C7—H7A	108.00

I1—C2—C3	116.0 (3)	N1—C7—H7B	108.00
C1—C2—C3	119.5 (3)	C8—C7—H7A	108.00
C2—C3—C4	120.5 (4)	C8—C7—H7B	108.00
C3—C4—C5	120.1 (3)	H7A—C7—H7B	107.00
C4—C5—C6	120.0 (4)		
O3—S1—N1—C7	15.3 (3)	C6—C1—C2—I1	178.1 (3)
O4—S1—N1—C7	-115.1 (3)	C6—C1—C2—C3	-1.5 (5)
C1—S1—N1—C7	131.6 (3)	S1—C1—C6—C5	179.6 (3)
O3—S1—C1—C2	54.6 (3)	C2—C1—C6—C5	1.3 (5)
O3—S1—C1—C6	-123.6 (3)	I1—C2—C3—C4	-179.3 (3)
O4—S1—C1—C2	-176.2 (3)	C1—C2—C3—C4	0.3 (6)
O4—S1—C1—C6	5.6 (3)	C2—C3—C4—C5	0.9 (6)
N1—S1—C1—C2	-59.7 (3)	C3—C4—C5—C6	-1.1 (6)
N1—S1—C1—C6	122.1 (3)	C4—C5—C6—C1	-0.1 (6)
S1—N1—C7—C8	72.2 (4)	N1—C7—C8—O1	-6.5 (5)
S1—C1—C2—I1	0.0 (4)	N1—C7—C8—O2	174.0 (3)
S1—C1—C2—C3	-179.6 (3)		

*Hydrogen-bond geometry (Å, °)*

<i>D</i> —H... <i>A</i>	<i>D</i> —H	H... <i>A</i>	<i>D</i> ... <i>A</i>	<i>D</i> —H... <i>A</i>
N1—H1N...O1 <sup>i</sup>	0.86	2.47	3.142 (3)	135
O2—H2O...O1 <sup>ii</sup>	0.82	1.86	2.676 (4)	176

Symmetry codes: (i)  $-x+1, -y+1, -z+1$ ; (ii)  $-x+1, -y+2, -z+1$ .