

Acta Crystallographica Section E

## Structure Reports

Online

ISSN 1600-5368

## 2,4-Dichlorophenyl benzoate

 B. Thimme Gowda,<sup>a\*</sup> Miroslav Tokarčík,<sup>b</sup> Jozef Kožíšek,<sup>b</sup>  
 P. A. Suchetan<sup>a</sup> and Hartmut Fuess<sup>c</sup>
<sup>a</sup>Department of Chemistry, Mangalore University, Mangalagangotri 574 199, Mangalore, India, <sup>b</sup>Faculty of Chemical and Food Technology, Slovak Technical University, Radlinského 9, SK-812 37 Bratislava, Slovak Republic, and <sup>c</sup>Institute of Materials Science, Darmstadt University of Technology, Petersenstrasse 23, D-64287 Darmstadt, Germany

Correspondence e-mail: gowdabt@yahoo.com

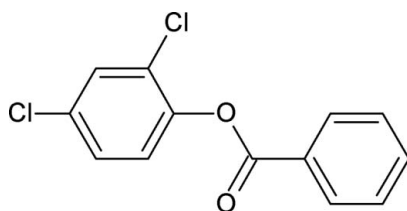
Received 28 March 2009; accepted 30 March 2009

 Key indicators: single-crystal X-ray study;  $T = 295$  K; mean  $\sigma(\text{C}-\text{C}) = 0.002$  Å;  $R$  factor = 0.023;  $wR$  factor = 0.059; data-to-parameter ratio = 13.8.

The crystal structure of the title compound,  $\text{C}_{13}\text{H}_8\text{Cl}_2\text{O}_2$ , resembles those of 2,3-dichlorophenyl benzoate, 2,4-dimethylphenyl benzoate and other aryl benzoates, with similar bond parameters. The plane of central  $-\text{C}(=\text{O})-\text{O}-$  group is inclined at the angle of  $9.1(2)^\circ$  with respect to the benzoate ring. The two aromatic rings make a dihedral angle of  $47.8(1)^\circ$ . In the crystal structure there are no classical hydrogen bonds. The molecules in the structure are packed into chains diagonally in the  $bc$  plane.

## Related literature

For the preparation of the compound, see: Nayak & Gowda (2009); For related structures, see: Gowda *et al.* (2007, 2008, 2009).



## Experimental

## Crystal data

 $\text{C}_{13}\text{H}_8\text{Cl}_2\text{O}_2$   
 $M_r = 267.09$ 

 Orthorhombic,  $P2_12_12_1$   
 $a = 3.9722(1)$  Å

 $b = 11.9458(3)$  Å  
 $c = 24.9407(5)$  Å  
 $V = 1183.46(5)$  Å<sup>3</sup>  
 $Z = 4$ 

 Mo  $K\alpha$  radiation  
 $\mu = 0.53$  mm<sup>-1</sup>  
 $T = 295$  K  
 $0.47 \times 0.11 \times 0.10$  mm

## Data collection

 Oxford Diffraction Xcalibur diffractometer with a Ruby (Gemini Mo) detector  
 Absorption correction: multi-scan (*CrysAlis RED*; Oxford)

 Diffraction, 2009)  
 $T_{\min} = 0.751$ ,  $T_{\max} = 0.943$   
 20045 measured reflections  
 2202 independent reflections  
 1961 reflections with  $I > 2\sigma(I)$   
 $R_{\text{int}} = 0.027$ 

## Refinement

 $R[F^2 > 2\sigma(F^2)] = 0.023$   
 $wR(F^2) = 0.059$   
 $S = 1.03$   
 2202 reflections  
 160 parameters  
 2 restraints

 H atoms treated by a mixture of independent and constrained refinement  
 $\Delta\rho_{\max} = 0.13$  e Å<sup>-3</sup>  
 $\Delta\rho_{\min} = -0.15$  e Å<sup>-3</sup>  
 Absolute structure: Flack (1983), 861 Friedel pairs  
 Flack parameter: 0.02 (5)

Data collection: *CrysAlis CCD* (Oxford Diffraction, 2009); cell refinement: *CrysAlis RED* (Oxford Diffraction, 2009); data reduction: *CrysAlis RED*; program(s) used to solve structure: *SHELXS97* (Sheldrick, 2008); program(s) used to refine structure: *SHELXL97* (Sheldrick, 2008); molecular graphics: *ORTEP-3* (Farrugia, 1997) and *DIAMOND* (Brandenburg, 2002); software used to prepare material for publication: *SHELXL97*, *PLATON* (Spek, 2009) and *WinGX* (Farrugia, 1999).

MT and JK thank the Grant Agency of the Slovak Republic (grant No. VEGA 1/0817/08) and the Structural Funds, Interreg IIIA, for financial support in purchasing the diffractometer.

Supplementary data and figures for this paper are available from the IUCr electronic archives (Reference: BT2919).

## References

- Brandenburg, K. (2002). *DIAMOND*. Crystal Impact GbR, Bonn, Germany.  
 Farrugia, L. J. (1997). *J. Appl. Cryst.* **30**, 565.  
 Farrugia, L. J. (1999). *J. Appl. Cryst.* **32**, 837–838.  
 Flack, H. D. (1983). *Acta Cryst.* **A39**, 876–881.  
 Gowda, B. T., Foro, S., Babitha, K. S. & Fuess, H. (2007). *Acta Cryst.* **E63**, o4286.  
 Gowda, B. T., Tokarčík, M., Kožíšek, J., Babitha, K. S. & Fuess, H. (2008). *Acta Cryst.* **E64**, o1280.  
 Gowda, B. T., Tokarčík, M., Kožíšek, J., Suchetan, P. A. & Fuess, H. (2009). *Acta Cryst.* **E65**, o915.  
 Nayak, R. & Gowda, B. T. (2009). *Z. Naturforsch. Teil A*, **63**. In preparation.  
 Oxford Diffraction (2009). *CrysAlis CCD* and *CrysAlis RED*. Oxford Diffraction Ltd, Abingdon, England.  
 Sheldrick, G. M. (2008). *Acta Cryst.* **A64**, 112–122.  
 Spek, A. L. (2009). *Acta Cryst.* **D65**, 148–155.

## supporting information

*Acta Cryst.* (2009). E65, o947 [doi:10.1107/S1600536809011763]

## 2,4-Dichlorophenyl benzoate

B. Thimme Gowda, Miroslav Tokarčík, Jozef Kožíšek, P. A. Suchetan and Hartmut Fues

### S1. Comment

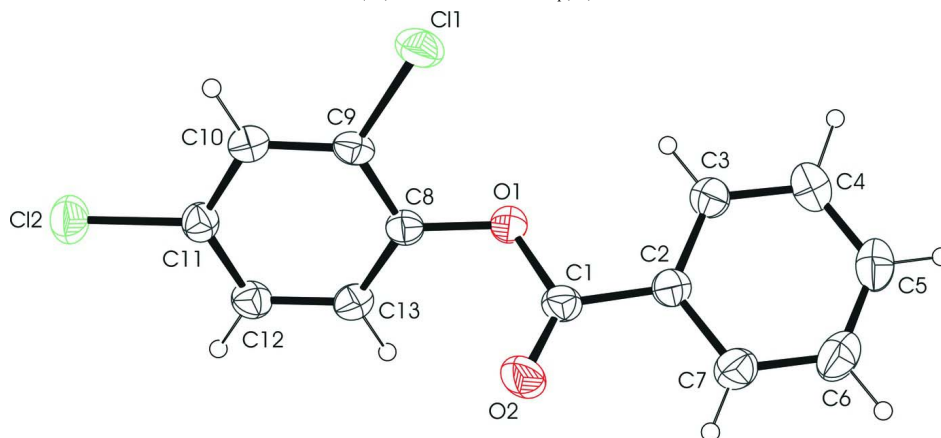
In the present work, as a part of studying the substituent effects on the crystal structures of aryl benzoates (Gowda *et al.*, 2007, 2008, 2009), the structure of 2,4-dichlorophenyl benzoate has been determined. The structure (Fig. 1) is similar to those of 2,3-dichlorophenylbenzoate (Gowda *et al.*, 2007), 2,4-dimethylphenyl benzoate (Gowda *et al.*, 2008) and other aryl benzoates (Gowda *et al.*, 2009). The two aromatic rings make a dihedral angle of 47.8 (1)°. The plane of the –C(=O)–O– group is inclined at an angle of 9.1 (2)° to the benzoate ring. In the crystal structure, there are no classical hydrogen bonds. The molecules in the structure are packed into chains as viewed down the *bc* plane (Fig. 2).

### S2. Experimental

The title compound was prepared according to a literature method (Nayak & Gowda, 2009). The purity of the compound was checked by determining its melting point. It was characterized by recording its infrared and NMR spectra (Nayak & Gowda, 2009). Single crystals of the title compound were obtained by slow evaporation of its ethanol solution. The X-ray diffraction studies were made at room temperature.

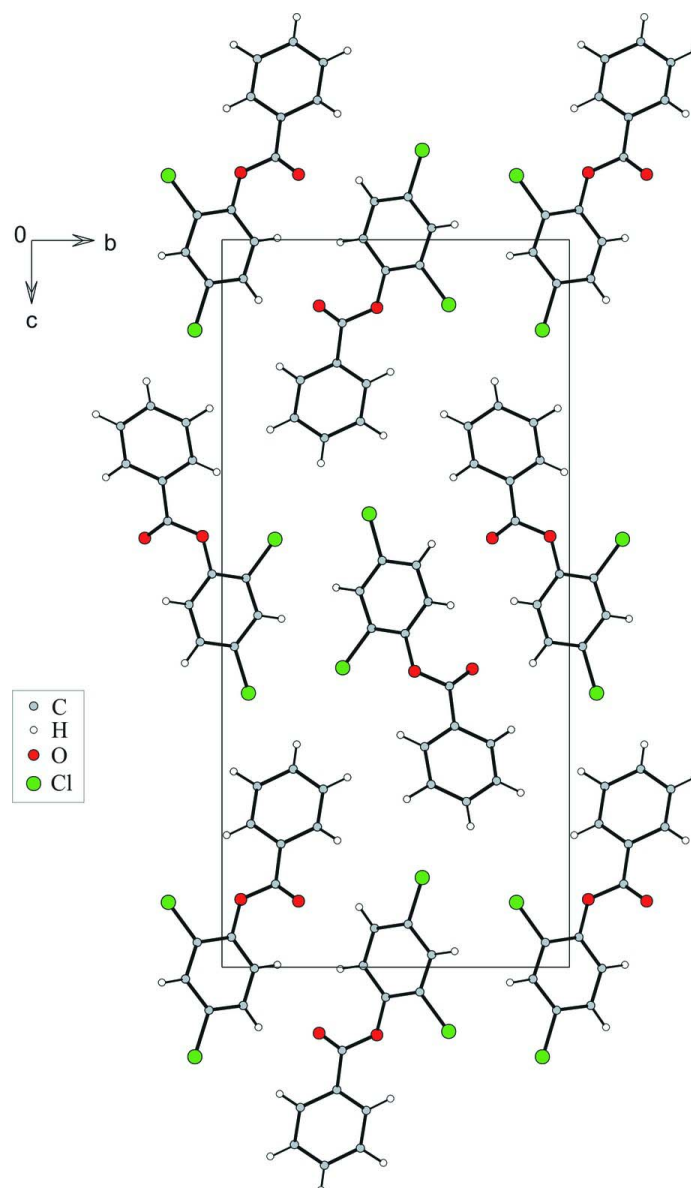
### S3. Refinement

H atoms were positioned geometrically and refined using a riding model with C–H distances of 0.93 Å, except for H atoms bound to C4 and C5, which were subject to the restraint on the C–H distance (set to 0.95 (4) Å). This measure improved the anisotropic displacement parameters of the atoms C4, C5 and enabled to remove the alert\_C regarding the Hirshfeld-test. All H atoms were refined with  $U_{\text{iso}}(\text{H}) = 1.2$  times  $U_{\text{eq}}(\text{C})$ .



**Figure 1**

Molecular structure of the title compound showing the atom labelling scheme. Displacement ellipsoids are drawn at the 30% probability level. H atoms are represented as small spheres of arbitrary radii.

**Figure 2**

The packing of the title compound viewed down the  $a$  axis.

### 2,4-Dichlorophenyl benzoate

#### Crystal data

$C_{13}H_8Cl_2O_2$

$M_r = 267.09$

Orthorhombic,  $P2_12_12_1$

Hall symbol:  $P\ 2ac\ 2ab$

$a = 3.9722\ (1)\ \text{\AA}$

$b = 11.9458\ (3)\ \text{\AA}$

$c = 24.9407\ (5)\ \text{\AA}$

$V = 1183.46\ (5)\ \text{\AA}^3$

$Z = 4$

$F(000) = 544$

$D_x = 1.499\ \text{Mg m}^{-3}$

Mo  $K\alpha$  radiation,  $\lambda = 0.71073\ \text{\AA}$

Cell parameters from 10923 reflections

$\theta = 3.3\text{--}29.5^\circ$

$\mu = 0.53\ \text{mm}^{-1}$

$T = 295\ \text{K}$

Needle, colourless

$0.47 \times 0.11 \times 0.10\ \text{mm}$

*Data collection*

Oxford Diffraction Xcalibur diffractometer  
with a Ruby (Gemini Mo) detector  
Graphite monochromator  
Detector resolution: 10.434 pixels mm<sup>-1</sup>  
 $\omega$  scans  
Absorption correction: multi-scan  
(*CrysAlis RED*; Oxford Diffraction, 2009)  
 $T_{\min} = 0.751$ ,  $T_{\max} = 0.943$

20045 measured reflections  
2202 independent reflections  
1961 reflections with  $I > 2\sigma(I)$   
 $R_{\text{int}} = 0.027$   
 $\theta_{\max} = 25.5^\circ$ ,  $\theta_{\min} = 3.3^\circ$   
 $h = -4 \rightarrow 4$   
 $k = -14 \rightarrow 14$   
 $l = -30 \rightarrow 30$

*Refinement*

Refinement on  $F^2$   
Least-squares matrix: full  
 $R[F^2 > 2\sigma(F^2)] = 0.023$   
 $wR(F^2) = 0.059$   
 $S = 1.03$   
2202 reflections  
160 parameters  
2 restraints  
Primary atom site location: structure-invariant  
direct methods  
Secondary atom site location: difference Fourier  
map

Hydrogen site location: inferred from  
neighbouring sites  
H atoms treated by a mixture of independent  
and constrained refinement  
 $w = 1/[\sigma^2(F_o^2) + (0.0343P)^2 + 0.0694P]$   
where  $P = (F_o^2 + 2F_c^2)/3$   
 $(\Delta/\sigma)_{\max} < 0.001$   
 $\Delta\rho_{\max} = 0.13 \text{ e } \text{\AA}^{-3}$   
 $\Delta\rho_{\min} = -0.15 \text{ e } \text{\AA}^{-3}$   
Absolute structure: Flack (1983), 861 Friedel  
pairs  
Absolute structure parameter: 0.02 (5)

*Special details*

**Geometry.** All e.s.d.'s (except the e.s.d. in the dihedral angle between two l.s. planes) are estimated using the full covariance matrix. The cell e.s.d.'s are taken into account individually in the estimation of e.s.d.'s in distances, angles and torsion angles; correlations between e.s.d.'s in cell parameters are only used when they are defined by crystal symmetry. An approximate (isotropic) treatment of cell e.s.d.'s is used for estimating e.s.d.'s involving l.s. planes.

**Refinement.** Refinement of  $F^2$  against ALL reflections. The weighted  $R$ -factor  $wR$  and goodness of fit  $S$  are based on  $F^2$ , conventional  $R$ -factors  $R$  are based on  $F$ , with  $F$  set to zero for negative  $F^2$ . The threshold expression of  $F^2 > \sigma(F^2)$  is used only for calculating  $R$ -factors(gt) *etc.* and is not relevant to the choice of reflections for refinement.  $R$ -factors based on  $F^2$  are statistically about twice as large as those based on  $F$ , and  $R$ -factors based on ALL data will be even larger.

*Fractional atomic coordinates and isotropic or equivalent isotropic displacement parameters ( $\text{\AA}^2$ )*

	<i>x</i>	<i>y</i>	<i>z</i>	$U_{\text{iso}}^*/U_{\text{eq}}$
C1	0.4499 (4)	0.34482 (14)	0.11405 (6)	0.0475 (4)
C2	0.5855 (4)	0.32994 (13)	0.16904 (6)	0.0454 (4)
C3	0.7373 (5)	0.41579 (15)	0.19708 (7)	0.0532 (4)
H3	0.7648	0.4856	0.1811	0.064*
C4	0.8484 (6)	0.39790 (19)	0.24887 (7)	0.0649 (5)
H4	0.947 (5)	0.4659 (16)	0.2689 (8)	0.078*
C5	0.8127 (6)	0.29517 (19)	0.27219 (8)	0.0671 (5)
H5	0.884 (6)	0.2847 (17)	0.3063 (8)	0.081*
C6	0.6657 (6)	0.20918 (18)	0.24438 (8)	0.0709 (6)
H6	0.6437	0.1393	0.2604	0.085*
C7	0.5496 (5)	0.22556 (15)	0.19272 (7)	0.0603 (5)
H7	0.4485	0.1672	0.174	0.072*
C8	0.4313 (4)	0.47198 (13)	0.04142 (6)	0.0439 (4)
C9	0.2560 (4)	0.56988 (13)	0.03415 (6)	0.0436 (4)
C10	0.1619 (4)	0.60433 (13)	-0.01650 (6)	0.0466 (4)

H10	0.0463	0.6712	-0.0215	0.056*
C11	0.2437 (4)	0.53692 (13)	-0.05937 (6)	0.0457 (4)
C12	0.4179 (4)	0.43887 (13)	-0.05300 (6)	0.0489 (4)
H12	0.4704	0.3947	-0.0825	0.059*
C13	0.5148 (4)	0.40651 (14)	-0.00208 (7)	0.0489 (4)
H13	0.636	0.3407	0.0028	0.059*
O1	0.5392 (3)	0.44515 (9)	0.09308 (4)	0.0522 (3)
O2	0.2813 (4)	0.27886 (11)	0.09054 (5)	0.0749 (4)
C11	0.14820 (14)	0.65271 (4)	0.088572 (17)	0.06409 (15)
C12	0.11922 (13)	0.57737 (4)	-0.123305 (17)	0.06442 (15)

*Atomic displacement parameters (Å<sup>2</sup>)*

	$U^{11}$	$U^{22}$	$U^{33}$	$U^{12}$	$U^{13}$	$U^{23}$
C1	0.0547 (10)	0.0419 (8)	0.0460 (8)	-0.0075 (9)	0.0057 (8)	-0.0025 (7)
C2	0.0474 (9)	0.0440 (9)	0.0450 (8)	-0.0005 (8)	0.0081 (7)	-0.0007 (7)
C3	0.0588 (10)	0.0515 (10)	0.0493 (9)	-0.0038 (9)	0.0020 (8)	0.0003 (8)
C4	0.0657 (12)	0.0814 (14)	0.0477 (10)	-0.0034 (12)	-0.0026 (9)	-0.0054 (9)
C5	0.0699 (13)	0.0840 (14)	0.0474 (10)	0.0095 (12)	0.0021 (10)	0.0095 (11)
C6	0.0816 (14)	0.0657 (12)	0.0654 (12)	0.0070 (13)	0.0145 (11)	0.0207 (10)
C7	0.0742 (13)	0.0497 (10)	0.0571 (11)	-0.0025 (10)	0.0093 (10)	0.0030 (8)
C8	0.0467 (9)	0.0394 (8)	0.0455 (8)	-0.0080 (8)	-0.0019 (7)	0.0002 (6)
C9	0.0466 (9)	0.0371 (8)	0.0470 (9)	-0.0076 (7)	0.0047 (7)	-0.0072 (7)
C10	0.0479 (9)	0.0401 (8)	0.0517 (9)	0.0020 (8)	0.0019 (8)	-0.0005 (7)
C11	0.0460 (9)	0.0485 (9)	0.0425 (8)	-0.0045 (8)	0.0005 (7)	0.0036 (7)
C12	0.0518 (10)	0.0482 (9)	0.0468 (9)	0.0031 (9)	0.0063 (8)	-0.0060 (7)
C13	0.0516 (9)	0.0411 (9)	0.0541 (9)	0.0043 (8)	0.0012 (8)	0.0009 (7)
O1	0.0667 (8)	0.0424 (6)	0.0475 (6)	-0.0113 (6)	-0.0117 (6)	0.0031 (5)
O2	0.1069 (11)	0.0634 (8)	0.0546 (7)	-0.0411 (8)	-0.0074 (8)	-0.0019 (6)
C11	0.0868 (3)	0.0509 (2)	0.0545 (2)	-0.0017 (2)	0.0102 (2)	-0.0149 (2)
C12	0.0754 (3)	0.0715 (3)	0.0464 (2)	0.0074 (3)	-0.0040 (2)	0.0055 (2)

*Geometric parameters (Å, °)*

C1—O2	1.189 (2)	C7—H7	0.93
C1—O1	1.355 (2)	C8—C9	1.373 (2)
C1—C2	1.484 (2)	C8—C13	1.378 (2)
C2—C3	1.380 (2)	C8—O1	1.3951 (19)
C2—C7	1.387 (2)	C9—C10	1.380 (2)
C3—C4	1.382 (3)	C9—C11	1.7334 (15)
C3—H3	0.93	C10—C11	1.378 (2)
C4—C5	1.365 (3)	C10—H10	0.93
C4—H4	1.031 (19)	C11—C12	1.370 (2)
C5—C6	1.370 (3)	C11—C12	1.7380 (16)
C5—H5	0.905 (19)	C12—C13	1.382 (2)
C6—C7	1.382 (3)	C12—H12	0.93
C6—H6	0.93	C13—H13	0.93

---

O2—C1—O1	122.91 (15)	C2—C7—H7	120.3
O2—C1—C2	125.52 (15)	C9—C8—C13	120.10 (14)
O1—C1—C2	111.57 (13)	C9—C8—O1	118.25 (13)
C3—C2—C7	119.82 (16)	C13—C8—O1	121.53 (14)
C3—C2—C1	122.54 (14)	C8—C9—C10	120.81 (14)
C7—C2—C1	117.63 (15)	C8—C9—C11	120.54 (12)
C2—C3—C4	119.89 (17)	C10—C9—C11	118.65 (13)
C2—C3—H3	120.1	C11—C10—C9	118.18 (15)
C4—C3—H3	120.1	C11—C10—H10	120.9
C5—C4—C3	120.3 (2)	C9—C10—H10	120.9
C5—C4—H4	122.8 (11)	C12—C11—C10	121.94 (15)
C3—C4—H4	116.8 (11)	C12—C11—C12	119.22 (13)
C4—C5—C6	120.16 (19)	C10—C11—C12	118.85 (12)
C4—C5—H5	119.4 (14)	C11—C12—C13	119.11 (15)
C6—C5—H5	120.4 (14)	C11—C12—H12	120.4
C5—C6—C7	120.52 (18)	C13—C12—H12	120.4
C5—C6—H6	119.7	C8—C13—C12	119.85 (16)
C7—C6—H6	119.7	C8—C13—H13	120.1
C6—C7—C2	119.33 (19)	C12—C13—H13	120.1
C6—C7—H7	120.3	C1—O1—C8	118.64 (12)
O2—C1—C2—C3	-170.23 (18)	O1—C8—C9—C11	-4.3 (2)
O1—C1—C2—C3	9.2 (2)	C8—C9—C10—C11	1.0 (2)
O2—C1—C2—C7	8.5 (3)	C11—C9—C10—C11	-178.90 (13)
O1—C1—C2—C7	-172.04 (15)	C9—C10—C11—C12	-0.9 (2)
C7—C2—C3—C4	-1.0 (3)	C9—C10—C11—C12	178.61 (13)
C1—C2—C3—C4	177.77 (17)	C10—C11—C12—C13	0.0 (2)
C2—C3—C4—C5	0.9 (3)	C12—C11—C12—C13	-179.58 (13)
C3—C4—C5—C6	-0.2 (3)	C9—C8—C13—C12	-0.8 (3)
C4—C5—C6—C7	-0.5 (3)	O1—C8—C13—C12	-176.67 (15)
C5—C6—C7—C2	0.4 (3)	C11—C12—C13—C8	0.9 (3)
C3—C2—C7—C6	0.3 (3)	O2—C1—O1—C8	-0.6 (3)
C1—C2—C7—C6	-178.49 (18)	C2—C1—O1—C8	179.94 (14)
C13—C8—C9—C10	-0.2 (2)	C9—C8—O1—C1	125.12 (16)
O1—C8—C9—C10	175.80 (14)	C13—C8—O1—C1	-59.0 (2)
C13—C8—C9—C11	179.76 (13)		

---