

Acta Crystallographica Section E

Structure Reports

Online

ISSN 1600-5368

4-Amino-5-(2-hydroxybenzylidene-amino)benzene-1,2-dicarbonitrile

Yan Cheng and Jing Gao*

Department of Pharmacy, Mudanjiang Medical University, Mudanjiang, 157011, People's Republic of China

Correspondence e-mail: gaojing_mmu@163.com

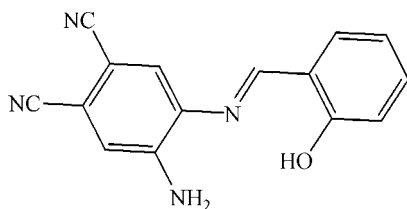
Received 26 February 2009; accepted 29 March 2009

 Key indicators: single-crystal X-ray study; $T = 273$ K; mean $\sigma(\text{C}-\text{C}) = 0.003$ Å; R factor = 0.046; wR factor = 0.170; data-to-parameter ratio = 15.2.

A new tetradentate unsymmetrical Schiff base, $\text{C}_{15}\text{H}_{10}\text{N}_4\text{O}$, has been synthesized from 4,5-dicyano-*o*-phenylenediamine and *o*-vanillin in refluxing ethanol. The dihedral angle between the two benzene rings is $39.0(1)^\circ$. There are intramolecular $\text{O}-\text{H}\cdots\text{N}$ and weak intermolecular $\text{N}-\text{H}\cdots\text{O}$ and $\text{N}-\text{H}\cdots\text{N}$ interactions.

Related literature

For the biological activity of Schiff bases, see: Boskovic *et al.* (2003); Koizumi *et al.* (2005); Oshio *et al.* (2005). For related structures, see: Kannappan *et al.* (2005); Zhang *et al.* (2003).



Experimental

Crystal data

 $\text{C}_{15}\text{H}_{10}\text{N}_4\text{O}$
 $M_r = 262.27$

 Monoclinic, $P2_1/c$
 $a = 14.0158(15)$ Å
 $b = 12.3650(13)$ Å
 $c = 7.3557(8)$ Å
 $\beta = 99.904(2)^\circ$
 $V = 1255.8(2)$ Å³
 $Z = 4$

 Mo $K\alpha$ radiation

 $\mu = 0.09$ mm⁻¹
 $T = 273$ K

 $0.12 \times 0.10 \times 0.08$ mm

Data collection

Bruker APEXII CCD area-detector diffractometer

Absorption correction: multi-scan (SADABS; Bruker, 2001)

 $T_{\min} = 0.989$, $T_{\max} = 0.993$

7234 measured reflections

2838 independent reflections

 1770 reflections with $I > 2\sigma(I)$
 $R_{\text{int}} = 0.027$

Refinement

 $R[F^2 > 2\sigma(F^2)] = 0.046$
 $wR(F^2) = 0.170$
 $S = 1.00$

2838 reflections

187 parameters

2 restraints

H atoms treated by a mixture of independent and constrained refinement

 $\Delta\rho_{\text{max}} = 0.14$ e Å⁻³
 $\Delta\rho_{\text{min}} = -0.16$ e Å⁻³

Table 1

Hydrogen-bond geometry (Å, °).

$D-\text{H}\cdots A$	$D-\text{H}$	$\text{H}\cdots A$	$D\cdots A$	$D-\text{H}\cdots A$
$\text{N3}-\text{H1B}\cdots\text{N2}^i$	0.930 (18)	2.205 (17)	3.126 (3)	171 (2)
$\text{N3}-\text{H1C}\cdots\text{O1}^{\text{ii}}$	0.930 (19)	2.69 (2)	3.206 (3)	115.5 (17)
$\text{O1}-\text{H1A}\cdots\text{N4}$	0.82	1.91	2.639 (2)	147

 Symmetry codes: (i) $-x + 1, y + \frac{1}{2}, -z - \frac{1}{2}$; (ii) $x, -y + \frac{3}{2}, z - \frac{1}{2}$.

Data collection: APEX2 (Bruker, 2004); cell refinement: SAINT-Plus (Bruker, 2001); data reduction: SAINT-Plus; program(s) used to solve structure: SHELXS97 (Sheldrick, 2008); program(s) used to refine structure: SHELXL97 (Sheldrick, 2008); molecular graphics: SHELXTL (Sheldrick, 2008); software used to prepare material for publication: SHELXTL.

The authors acknowledge financial support from Mudanjiang Medical University.

Supplementary data and figures for this paper are available from the IUCr electronic archives (Reference: FL2237).

References

- Boskovic, C., Bircher, R., Tregenna-Piggott, P. L. W., Gudel, H. U., Paulsen, C., Wernsdorfer, W., Barra, A. L., Khatsko, E., Neels, A. & Stoeckli-Evans, H. (2003). *J. Am. Chem. Soc.* **125**, 14046–14058.
- Bruker (2001). SAINT-Plus and SADABS. Bruker AXS Inc., Madison, Wisconsin, USA.
- Bruker (2004). APEX2. Bruker AXS Inc., Madison, Wisconsin, USA.
- Kannappan, R., Tanase, S., Mutikainen, I., Turpeinen, U. & Reedijk, J. (2005). *Inorg. Chim. Acta*, **358**, 383–388.
- Koizumi, S., Nihei, M., Nakano, M. & Oshio, H. (2005). *Inorg. Chem.* **44**, 1208–1210.
- Oshio, H., Nihei, M., Koizumi, S., Shiga, T., Nojiri, H., Nakano, M., Shirakawa, N. & Akatsu, M. (2005). *J. Am. Chem. Soc.* **127**, 4568–4569.
- Sheldrick, G. M. (2008). *Acta Cryst.* **A64**, 112–122.
- Zhang, Y., Khoo, L. E. & Ng, S. W. (2003). *Acta Cryst.* **E59**, o1496–o1497.

supporting information

Acta Cryst. (2009). E65, o963 [doi:10.1107/S160053680901157X]

4-Amino-5-(2-hydroxybenzylideneamino)benzene-1,2-dicarbonitrile**Yan Cheng and Jing Gao****S1. Comment**

During the past decades, Schiff bases have been intensively investigated not only because of their strong coordination capability but also due to their diverse biological activities, such as antibacterial, antitumor, *etc.* (Koizumi *et al.*, 2005; Boskovic *et al.*, 2003; Oshioh *et al.*, 2005). The halide groups in schiff base ligands could effectively optimize the properties of the coordination complexes.

X-ray diffraction analysis indicates that (I) is an unsymmetrical Schiff base ligand (fig. 1). The imide bond length 1.283 (2) Å for C(1)–N(4) is slightly longer than that of 4-Bromo-2-(2-pyridylmethyliminomethyl)phenol (1.269 (4) Å) (Zhang *et al.*, 2003). It is noteworthy that there exists relatively weak intermolecular interactions involving the NH moieties and one intramolecular interaction with OH as the donor (Table 1), which are similar to those of its derivative 4-Bromo-2-(2-pyridylmethyliminomethyl)phenol (Zhang *et al.*, 2003).

S2. Experimental

(I) was prepared according to the method reported in the literature (Kannappan *et al.*, 2005). 4,5-dicyano-*o*-phenylenediamine (2.16 g, 0.02 mol) was added to a stirred ethanol solution of O-vanillin (3.04 g, 0.02 mol (10 ml)). The reaction mixture was stirred about 3 h and then the mixture was allowed to stand at room temperature for about two days. Yellow crystals suitable for X-ray diffraction analysis were then collected with a yield of 60%.

S3. Refinement

The H atoms of the amino group were located from difference density maps and were refined with distance restraints of $d(\text{N-H}) = 0.93(2) \text{ \AA}$. H atoms bound to C and O atoms were visible in difference maps and were placed using the HFIX commands in *SHELXL97*. All H atoms were allowed for as riding atoms (C–H 0.97 Å, O–H 0.86 Å) with the constraint $U_{\text{iso}}(\text{H}) = 1.5U_{\text{eq}}(\text{methyl carrier}), 1.5U_{\text{eq}}(\text{O})$ and $1.2U_{\text{eq}}(\text{carrier})$ for all other H atoms.

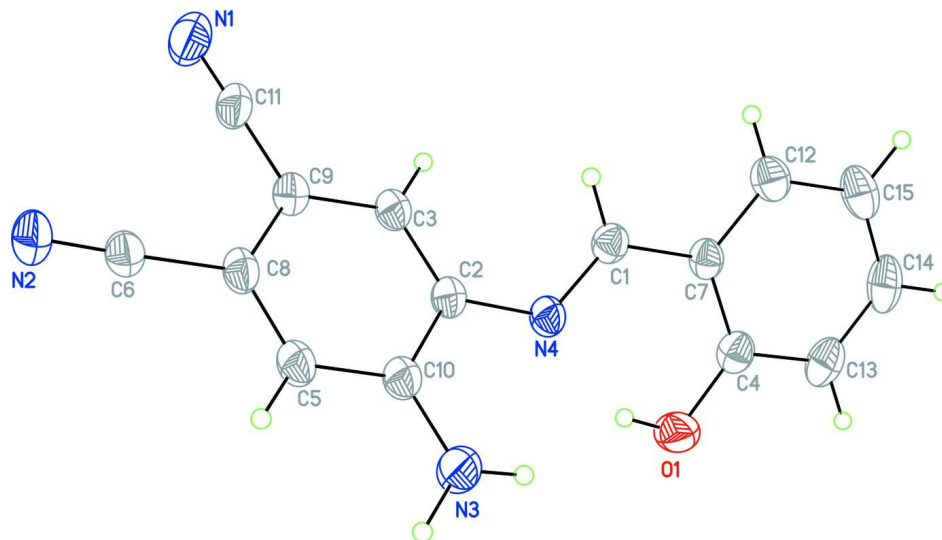


Figure 1

A view of the structure of (I), showing the atomic numbering scheme and 30% probability displacement ellipsoids.

4-Amino-5-(2-hydroxybenzylideneamino)benzene-1,2-dicarbonitrile

Crystal data

$C_{15}H_{10}N_4O$

$M_r = 262.27$

Monoclinic, $P2_1/c$

Hall symbol: $-P\ 2ybc$

$a = 14.0158$ (15) Å

$b = 12.3650$ (13) Å

$c = 7.3557$ (8) Å

$\beta = 99.904$ (2)°

$V = 1255.8$ (2) Å³

$Z = 4$

$F(000) = 544$

$D_x = 1.387$ Mg m⁻³

Mo $K\alpha$ radiation, $\lambda = 0.71073$ Å

Cell parameters from 1728 reflections

$\theta = 2.2\text{--}26.3^\circ$

$\mu = 0.09$ mm⁻¹

$T = 273$ K

Block, yellow

$0.12 \times 0.10 \times 0.08$ mm

Data collection

Bruker APEXII CCD area-detector
diffractometer

Radiation source: fine-focus sealed tube

Graphite monochromator

φ and ω scans

Absorption correction: multi-scan

(*SADABS*; Bruker, 2001)

$T_{\min} = 0.989$, $T_{\max} = 0.993$

7234 measured reflections

2838 independent reflections

1770 reflections with $I > 2\sigma(I)$

$R_{\text{int}} = 0.027$

$\theta_{\max} = 27.5^\circ$, $\theta_{\min} = 1.5^\circ$

$h = -18 \rightarrow 15$

$k = -16 \rightarrow 11$

$l = -9 \rightarrow 9$

Refinement

Refinement on F^2

Least-squares matrix: full

$R[F^2 > 2\sigma(F^2)] = 0.046$

$wR(F^2) = 0.170$

$S = 1.00$

2838 reflections

187 parameters

2 restraints

Primary atom site location: structure-invariant
direct methods

Secondary atom site location: difference Fourier
map

Hydrogen site location: inferred from
neighbouring sites

H atoms treated by a mixture of independent
and constrained refinement

$$w = 1/[\sigma^2(F_o^2) + (0.105P)^2]$$

where $P = (F_o^2 + 2F_c^2)/3$
 $(\Delta/\sigma)_{\max} = 0.001$

$$\Delta\rho_{\max} = 0.14 \text{ e } \text{\AA}^{-3}$$

$$\Delta\rho_{\min} = -0.16 \text{ e } \text{\AA}^{-3}$$

Special details

Geometry. All e.s.d.'s (except the e.s.d. in the dihedral angle between two l.s. planes) are estimated using the full covariance matrix. The cell e.s.d.'s are taken into account individually in the estimation of e.s.d.'s in distances, angles and torsion angles; correlations between e.s.d.'s in cell parameters are only used when they are defined by crystal symmetry. An approximate (isotropic) treatment of cell e.s.d.'s is used for estimating e.s.d.'s involving l.s. planes.

Refinement. Refinement of F^2 against ALL reflections. The weighted R -factor wR and goodness of fit S are based on F^2 , conventional R -factors R are based on F , with F set to zero for negative F^2 . The threshold expression of $F^2 > \sigma(F^2)$ is used only for calculating R -factors(gt) *etc.* and is not relevant to the choice of reflections for refinement. R -factors based on F^2 are statistically about twice as large as those based on F , and R -factors based on ALL data will be even larger.

Fractional atomic coordinates and isotropic or equivalent isotropic displacement parameters (\AA^2)

	<i>x</i>	<i>y</i>	<i>z</i>	$U_{\text{iso}}^*/U_{\text{eq}}$
C1	0.91817 (12)	0.53191 (15)	0.1796 (2)	0.0451 (5)
H1	0.9143	0.4649	0.1213	0.054*
C2	0.75504 (12)	0.55664 (15)	0.0486 (2)	0.0447 (5)
C3	0.72462 (12)	0.45035 (16)	0.0422 (3)	0.0467 (5)
H3	0.7640	0.3982	0.1084	0.056*
C4	1.01931 (14)	0.66149 (16)	0.3888 (3)	0.0495 (5)
C5	0.60770 (13)	0.60523 (16)	-0.1573 (3)	0.0513 (5)
H5	0.5687	0.6568	-0.2258	0.062*
C6	0.48595 (14)	0.46643 (17)	-0.2707 (3)	0.0517 (5)
C7	1.00930 (12)	0.56357 (15)	0.2900 (2)	0.0433 (5)
C8	0.57855 (12)	0.49920 (16)	-0.1632 (3)	0.0478 (5)
C9	0.63646 (13)	0.41989 (15)	-0.0612 (3)	0.0487 (5)
C10	0.69528 (13)	0.63652 (15)	-0.0496 (3)	0.0491 (5)
C11	0.60376 (14)	0.30994 (18)	-0.0585 (3)	0.0585 (6)
C12	1.09021 (14)	0.49709 (18)	0.2966 (3)	0.0551 (5)
H12	1.0840	0.4315	0.2338	0.066*
C13	1.10904 (16)	0.69001 (19)	0.4891 (3)	0.0629 (6)
H13	1.1160	0.7542	0.5559	0.075*
C14	1.18721 (16)	0.6233 (2)	0.4895 (3)	0.0685 (7)
H14	1.2472	0.6437	0.5554	0.082*
C15	1.17898 (14)	0.5268 (2)	0.3944 (3)	0.0671 (7)
H15	1.2327	0.4824	0.3962	0.080*
N1	0.57748 (15)	0.22349 (18)	-0.0536 (3)	0.0888 (7)
N2	0.41430 (13)	0.43718 (16)	-0.3475 (3)	0.0680 (6)
N3	0.72491 (14)	0.74135 (15)	-0.0435 (3)	0.0700 (6)
N4	0.84233 (10)	0.59191 (12)	0.1583 (2)	0.0462 (4)
O1	0.94357 (11)	0.72904 (11)	0.3901 (2)	0.0692 (5)
H1A	0.8950	0.7034	0.3268	0.104*
H1B	0.6802 (13)	0.7949 (13)	-0.087 (3)	0.080*
H1C	0.7813 (10)	0.7570 (18)	0.039 (3)	0.080*

Atomic displacement parameters (Å²)

	U^{11}	U^{22}	U^{33}	U^{12}	U^{13}	U^{23}
C1	0.0428 (10)	0.0454 (10)	0.0451 (10)	-0.0030 (8)	0.0018 (8)	0.0023 (8)
C2	0.0359 (9)	0.0493 (11)	0.0464 (10)	-0.0008 (8)	0.0002 (8)	-0.0008 (8)
C3	0.0373 (10)	0.0505 (11)	0.0491 (11)	0.0030 (8)	-0.0015 (8)	0.0021 (8)
C4	0.0475 (11)	0.0520 (11)	0.0461 (11)	-0.0053 (9)	0.0000 (8)	0.0062 (9)
C5	0.0389 (10)	0.0566 (12)	0.0540 (12)	0.0045 (9)	-0.0047 (8)	0.0050 (9)
C6	0.0411 (11)	0.0574 (12)	0.0544 (12)	0.0012 (9)	0.0019 (9)	-0.0047 (9)
C7	0.0367 (10)	0.0496 (11)	0.0412 (10)	-0.0016 (8)	-0.0003 (7)	0.0078 (8)
C8	0.0355 (10)	0.0589 (12)	0.0464 (11)	0.0001 (8)	-0.0006 (8)	-0.0024 (8)
C9	0.0391 (10)	0.0527 (12)	0.0522 (11)	-0.0018 (8)	0.0019 (8)	-0.0026 (8)
C10	0.0408 (10)	0.0495 (11)	0.0539 (11)	0.0007 (8)	-0.0004 (8)	0.0031 (9)
C11	0.0426 (11)	0.0556 (13)	0.0708 (15)	-0.0043 (10)	-0.0088 (10)	-0.0018 (10)
C12	0.0479 (11)	0.0643 (13)	0.0514 (12)	0.0038 (9)	0.0036 (9)	0.0068 (9)
C13	0.0586 (13)	0.0691 (14)	0.0556 (13)	-0.0205 (11)	-0.0052 (10)	0.0022 (10)
C14	0.0441 (12)	0.0998 (19)	0.0557 (13)	-0.0192 (12)	-0.0083 (10)	0.0163 (13)
C15	0.0405 (11)	0.0969 (19)	0.0615 (14)	0.0076 (11)	0.0022 (10)	0.0150 (12)
N1	0.0665 (13)	0.0643 (14)	0.124 (2)	-0.0132 (11)	-0.0155 (12)	0.0018 (12)
N2	0.0467 (10)	0.0788 (14)	0.0724 (13)	-0.0042 (9)	-0.0071 (9)	-0.0107 (10)
N3	0.0556 (11)	0.0517 (11)	0.0917 (15)	-0.0012 (9)	-0.0185 (10)	0.0126 (10)
N4	0.0375 (8)	0.0481 (9)	0.0490 (9)	0.0002 (7)	-0.0036 (7)	0.0033 (7)
O1	0.0627 (10)	0.0562 (9)	0.0816 (11)	0.0064 (7)	-0.0076 (8)	-0.0126 (8)

Geometric parameters (Å, °)

C1—N4	1.283 (2)	C7—C12	1.395 (3)
C1—C7	1.445 (2)	C8—C9	1.405 (3)
C1—H1	0.9300	C9—C11	1.436 (3)
C2—C3	1.380 (3)	C10—N3	1.360 (3)
C2—C10	1.411 (3)	C11—N1	1.133 (3)
C2—N4	1.414 (2)	C12—C15	1.376 (3)
C3—C9	1.387 (2)	C12—H12	0.9300
C3—H3	0.9300	C13—C14	1.371 (3)
C4—O1	1.352 (2)	C13—H13	0.9300
C4—C13	1.390 (3)	C14—C15	1.378 (3)
C4—C7	1.407 (3)	C14—H14	0.9300
C5—C8	1.372 (3)	C15—H15	0.9300
C5—C10	1.396 (3)	N3—H1B	0.930 (18)
C5—H5	0.9300	N3—H1C	0.930 (19)
C6—N2	1.124 (2)	O1—H1A	0.8200
C6—C8	1.456 (2)		
N4—C1—C7	123.06 (17)	C3—C9—C11	120.39 (17)
N4—C1—H1	118.5	C8—C9—C11	120.79 (16)
C7—C1—H1	118.5	N3—C10—C5	121.11 (18)
C3—C2—C10	119.77 (16)	N3—C10—C2	119.97 (17)
C3—C2—N4	123.04 (16)	C5—C10—C2	118.88 (17)

C10—C2—N4	117.10 (16)	N1—C11—C9	178.9 (3)
C2—C3—C9	121.21 (17)	C15—C12—C7	121.2 (2)
C2—C3—H3	119.4	C15—C12—H12	119.4
C9—C3—H3	119.4	C7—C12—H12	119.4
O1—C4—C13	118.65 (19)	C14—C13—C4	119.9 (2)
O1—C4—C7	121.79 (16)	C14—C13—H13	120.1
C13—C4—C7	119.57 (19)	C4—C13—H13	120.1
C8—C5—C10	120.72 (18)	C13—C14—C15	121.5 (2)
C8—C5—H5	119.6	C13—C14—H14	119.2
C10—C5—H5	119.6	C15—C14—H14	119.2
N2—C6—C8	176.6 (2)	C12—C15—C14	119.1 (2)
C12—C7—C4	118.76 (17)	C12—C15—H15	120.5
C12—C7—C1	119.65 (18)	C14—C15—H15	120.5
C4—C7—C1	121.57 (17)	C10—N3—H1B	118.9 (14)
C5—C8—C9	120.58 (16)	C10—N3—H1C	116.1 (14)
C5—C8—C6	121.05 (17)	H1B—N3—H1C	122 (2)
C9—C8—C6	118.34 (17)	C1—N4—C2	120.57 (16)
C3—C9—C8	118.78 (17)	C4—O1—H1A	109.5

Hydrogen-bond geometry (\AA , $^\circ$)

<i>D</i> —H \cdots <i>A</i>	<i>D</i> —H	H \cdots <i>A</i>	<i>D</i> \cdots <i>A</i>	<i>D</i> —H \cdots <i>A</i>
N3—H1B \cdots N2 ⁱ	0.93 (2)	2.21 (2)	3.126 (3)	171 (2)
N3—H1C \cdots O1 ⁱⁱ	0.93 (2)	2.69 (2)	3.206 (3)	116 (2)
O1—H1A \cdots N4	0.82	1.91	2.639 (2)	147

Symmetry codes: (i) $-x+1, y+1/2, -z-1/2$; (ii) $x, -y+3/2, z-1/2$.