

Acta Crystallographica Section E

Structure Reports

Online

ISSN 1600-5368

threo-2-(2,6-Dimethoxyphenoxy)-1-(4-ethoxy-3-methoxyphenyl)propane-1,3-diol

 Kentaro Ishizuka,^{a,b} Daisuke Ando,^c Takashi Watanabe^c and Masaharu Nakamura^{a,b*}

^aInternational Research Center for Elements Science, Institute for Chemical Research, Kyoto University, Uji, Kyoto 611-0011, Japan, ^bInstitute of Sustainability Science, Kyoto University, Japan, and ^cResearch Institute for Sustainable Humanosphere, Kyoto University, Uji, Kyoto 611-0011, Japan

Correspondence e-mail: masaharu@scl.kyoto-u.ac.jp

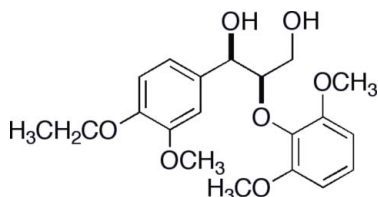
Received 10 April 2009; accepted 15 May 2009

 Key indicators: single-crystal X-ray study; $T = 173$ K; mean $\sigma(\text{C}-\text{C}) = 0.004$ Å; R factor = 0.074; wR factor = 0.227; data-to-parameter ratio = 16.2.

In the crystal structure of the title compound, $\text{C}_{20}\text{H}_{26}\text{O}_7$, a lignin model compound, the asymmetric unit contains two molecules which adopt almost identical overall conformations with some deviation in the region of the terminal hydroxyl groups. The two molecules are linked by an intermolecular $\text{O}-\text{H}\cdots\text{O}$ hydrogen bond. They also develop intramolecular $\text{O}-\text{H}\cdots\text{O}$ hydrogen bonds.

Related literature

For the synthesis, see: von Unge *et al.* (1988). For the crystal structure of two related guaiacylglycerol β -syringyl ether type lignin model dimers, see: Langer, Li *et al.* (2002); Langer, Lundquist *et al.* (2002). For the crystal structure of several related syringylglycerol β -syringyl ethers, see: Langer & Lundquist (2001); Langer, Li *et al.* (2002); Langer, Lundquist *et al.* (2002); Langer *et al.* (2005); Lundquist *et al.* (2005); Stomberg & Lundquist (1989).



Experimental

Crystal data

$\text{C}_{20}\text{H}_{26}\text{O}_7$
 $M_r = 378.42$
 Monoclinic, $P2_1/n$
 $a = 9.929$ (4) Å
 $b = 28.066$ (10) Å

$c = 13.985$ (5) Å
 $\beta = 100.954$ (2)°
 $V = 3826$ (2) Å³
 $Z = 8$
 Mo $K\alpha$ radiation

$\mu = 0.10$ mm⁻¹
 $T = 173$ K

$0.50 \times 0.50 \times 0.40$ mm

Data collection

Rigaku Saturn diffractometer
 Absorption correction: numerical
 (*CrystalClear*; Rigaku, 2006)
 $T_{\min} = 0.938$, $T_{\max} = 0.961$

30389 measured reflections
 8726 independent reflections
 3941 reflections with $F^2 > 2\sigma(F^2)$
 $R_{\text{int}} = 0.056$

Refinement

$R[F^2 > 2\sigma(F^2)] = 0.074$
 $wR(F^2) = 0.227$
 $S = 1.00$
 8726 reflections

539 parameters
 H-atom parameters constrained
 $\Delta\rho_{\max} = 0.59$ e Å⁻³
 $\Delta\rho_{\min} = -0.67$ e Å⁻³

Table 1
 Hydrogen-bond geometry (Å, °).

$D-H\cdots A$	$D-H$	$H\cdots A$	$D\cdots A$	$D-H\cdots A$
$\text{O3}-\text{H3}\cdots\text{O6}$	0.82	2.09	2.772 (3)	141
$\text{O4}-\text{H4}\cdots\text{O7}$	0.82	2.46	2.758 (3)	103
$\text{O10}-\text{H10}\cdots\text{O13}$	0.82	2.17	2.878 (3)	145
$\text{O11}-\text{H11}\cdots\text{O4}$	0.82	2.19	2.882 (3)	142
$\text{O3}-\text{H3}\cdots\text{O5}$	0.82	2.44	2.859 (3)	113
$\text{O10}-\text{H10}\cdots\text{O12}$	0.82	2.32	2.760 (3)	114
$\text{O11}-\text{H11}\cdots\text{O12}$	0.82	2.36	2.795 (3)	114

Data collection: *CrystalClear* (Rigaku, 2006); cell refinement: *CrystalClear*; data reduction: *CrystalStructure* (Rigaku/MSO, 2007); program(s) used to solve structure: *SIR2004* (Burla *et al.*, 2005); program(s) used to refine structure: *CRYSTALS* (Carruthers *et al.*, 1999); molecular graphics: *ORTEP-3 for Windows* (Farrugia, 1997); software used to prepare material for publication: *CrystalStructure*.

The authors thank the Ministry of Education, Culture, Sports, Science and Technology of Japan for financial support via Grants-in-Aid for Scientific Research on Priority Areas 'Synergy of Elements' (MN, 18064006) and for Young Scientists from JSPS (S, MN, 2075003). Financial and facility support from the System for Development and Assessment of Sustainable Humanosphere, Center for Ecological Research, Research Institute for Sustainable Humanosphere, Kyoto University, is also acknowledged.

Supplementary data and figures for this paper are available from the IUCr electronic archives (Reference: BX2203).

References

- Burla, M. C., Caliandro, R., Camalli, M., Carrozzini, B., Cascarano, G. L., De Caro, L., Giacovazzo, C., Polidori, G. & Spagna, R. (2005). *J. Appl. Cryst.* **38**, 381–388.
- Carruthers, J. R., Rollett, J. S., Betteridge, P. W., Kinna, D., Pearce, L., Larsen, A. & Gabe, E. (1999). *CRYSTALS*. Issue 11. Chemical Crystallography Laboratory, Oxford, England.
- Farrugia, L. J. (1997). *J. Appl. Cryst.* **30**, 565.
- Langer, V., Li, S. & Lundquist, K. (2002). *Acta Cryst.* **E58**, o42–o44.
- Langer, V. & Lundquist, K. (2001). *Acta Cryst.* **E57**, o1219–o1221.
- Langer, V., Lundquist, K. & Miksche, G. E. (2005). *Acta Cryst.* **E61**, o1001–o1003.
- Langer, V., Lundquist, K., Stomberg, R. & von Unge, S. (2002). *Acta Cryst.* **E58**, o90–o92.
- Lundquist, K., Li, S. & Langer, V. (2005). *Acta Cryst.* **C61**, o256–o258.
- Rigaku (2006). *CrystalClear*. Rigaku Corporation, Tokyo, Japan.

Rigaku/MSC (2007). *CrystalStructure*. Rigaku/MSC Inc., The Woodlands, Texas, USA.
Stomberg, R. & Lundquist, K. (1989). *J. Crystallogr. Spectrosc. Res.* **19**, 331–339.

Unge, S. von, Lundquist, K. & Stomberg, R. (1988). *Acta Chem. Scand. B*, **42**, 469–474.

supporting information

Acta Cryst. (2009). E65, o1389–o1390 [doi:10.1107/S1600536809018431]

***threo*-2-(2,6-Dimethoxyphenoxy)-1-(4-ethoxy-3-methoxyphenyl)propane-1,3-diol**

Kentaro Ishizuka, Daisuke Ando, Takashi Watanabe and Masaharu Nakamura

S1. Comment

Lignin is a complex biopolymer consisting of *p*-hydroxyphenyl, guaiacyl and syringyl phenylpropanoid monomer units. Aryl glycerol β -syringyl ethers are the main structural elements in hardwood lignins. The crystal structure of *threo*-2-(2,6-dimethoxyphenoxy)-1-(3,4-dimethoxyphenyl)-1,3-propanediol (Langer, Li *et al.*, 2002; Langer, Lundquist *et al.*, 2002) and several syringylglycerol β -syringyl ethers are reported. We have prepared a guaiacylglycerol β -syringyl ether type lignin model dimer having an ethyl ether substituent at 4-position, which does not show a similar packing structure or hydrogen bonding network to that of the methyl ether counterpart.

There are two molecules of the title compound in the asymmetric unit (Fig. 1). The conformations of two molecules are similar, as indicated by the torsion angles of 59.1 (3) and 61.3 (3)° along the phenylpropanoid skeleton (C1—C10—C11—C12 and C21—C30—C31—C32), respectively. They are connected with each other by the hydrogen bond of O11—H11···O4 through the terminal hydroxyl groups. Intramolecular hydrogen bonds of O3—H3···O6, O4—H4···O7 and O10—H10···O13 are also present (Table 1).

S2. Experimental

The title compound was synthesized in two steps with a procedure similar to that reported in the literature (von Unge *et al.*, 1988). Separation of the *erythro* and *threo* forms of the first step product was accomplished by recrystallization from methanol to give *threo*-3-(4-ethoxy-3-methoxyphenyl)-2-(2,6-Dimethoxyphenoxy)-3-hydroxypropanoic acid **1**. The title compound, *threo*-1-(4-ethoxy-3-methoxyphenyl)-2-(2,6-dimethoxyphenoxy)-1,3-propanediol, was synthesized from **1**, and single crystals of that suitable for X-ray crystallography were obtained from methanol.

S3. Refinement

All H atoms were positioned geometrically and treated as riding, with C—H bond lengths constrained to 0.93 (aromatic), 0.96 (methyl), 0.97 (methylene), 0.98 (methine) and 0.82 Å (hydroxyl), and with $U_{\text{iso}}(\text{H}) = xU_{\text{eq}}(\text{carrier atom})$, where $x = 1.5$ for methyl and hydroxyl groups and $x = 1.2$ for other H atoms.

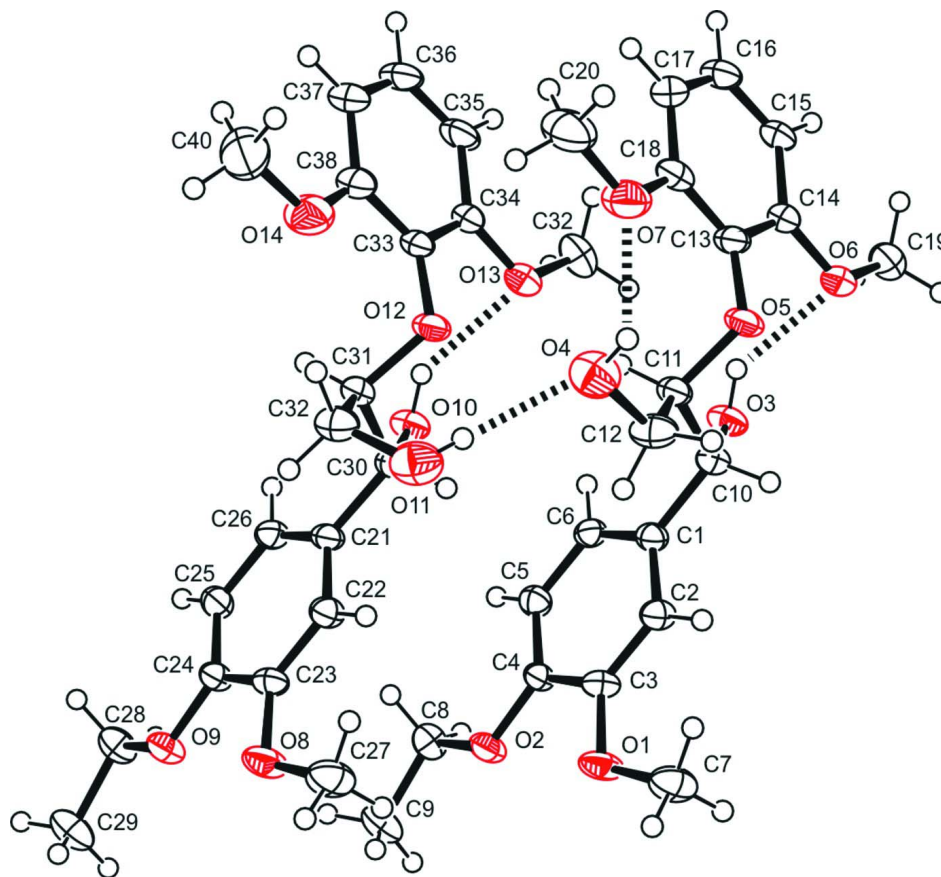


Figure 1

A view of the molecular structure of the title compound, which is an asymmetric unit with two molecules, with the atom-labeling scheme. Displacement ellipsoids are drawn at the 50% probability level. Dash lines indicate hydrogen bonds.

***threo*-2-(2,6-Dimethoxyphenoxy)-1-(4-ethoxy-3-methoxyphenyl)propane-1,3-diol**

Crystal data

$C_{20}H_{26}O_7$
 $M_r = 378.42$
 Monoclinic, $P2_1/n$
 Hall symbol: $-P\ 2_1n$
 $a = 9.929\ (4)\ \text{\AA}$
 $b = 28.066\ (10)\ \text{\AA}$
 $c = 13.985\ (5)\ \text{\AA}$
 $\beta = 100.954\ (2)^\circ$
 $V = 3826\ (2)\ \text{\AA}^3$
 $Z = 8$

$F(000) = 1616.00$
 $D_x = 1.314\ \text{Mg m}^{-3}$
 Mo $K\alpha$ radiation, $\lambda = 0.71070\ \text{\AA}$
 Cell parameters from 7455 reflections
 $\theta = 3.0\text{--}27.5^\circ$
 $\mu = 0.10\ \text{mm}^{-1}$
 $T = 173\ \text{K}$
 Block, colorless
 $0.50 \times 0.50 \times 0.40\ \text{mm}$

Data collection

Rigaku Saturn
 diffractometer
 Detector resolution: $7.31\ \text{pixels mm}^{-1}$
 ω scans
 Absorption correction: numerical
 (*CrystalClear*; Rigaku, 2006)

$T_{\min} = 0.938$, $T_{\max} = 0.961$
 30389 measured reflections
 8726 independent reflections
 3941 reflections with $F^2 > 2\sigma(F^2)$
 $R_{\text{int}} = 0.056$
 $\theta_{\text{max}} = 27.5^\circ$

$h = -11 \rightarrow 12$
 $k = -35 \rightarrow 36$

$l = -18 \rightarrow 16$

Refinement

Refinement on F^2
 $R[F^2 > 2\sigma(F^2)] = 0.074$
 $wR(F^2) = 0.227$
 $S = 1.00$
 8726 reflections
 539 parameters

H-atom parameters constrained
 $w = 1/[0.0018F_o^2 + \sigma(F_o^2)]/(4F_o^2)$
 $(\Delta/\sigma)_{\max} < 0.001$
 $\Delta\rho_{\max} = 0.59 \text{ e } \text{\AA}^{-3}$
 $\Delta\rho_{\min} = -0.67 \text{ e } \text{\AA}^{-3}$

Special details

Refinement. Refinement was performed using all reflections. The weighted R -factor (wR) and goodness of fit (S) are based on F^2 . R -factor (gt) are based on F . The threshold expression of $F^2 > 2.0 \sigma(F^2)$ is used only for calculating R -factor (gt).

Fractional atomic coordinates and isotropic or equivalent isotropic displacement parameters (\AA^2)

	x	y	z	$U_{\text{iso}}^*/U_{\text{eq}}$
O(1)	0.4275 (2)	0.14739 (7)	0.32648 (14)	0.0342 (6)
O(2)	0.6049 (2)	0.07942 (7)	0.34454 (14)	0.0303 (5)
O(3)	0.3267 (2)	0.07866 (7)	0.71410 (14)	0.0320 (6)
O(4)	0.5503 (2)	0.23444 (8)	0.73756 (17)	0.0475 (7)
O(5)	0.3404 (2)	0.16987 (8)	0.80643 (14)	0.0327 (6)
O(6)	0.1968 (2)	0.09850 (8)	0.86837 (14)	0.0347 (6)
O(7)	0.5527 (2)	0.21120 (9)	0.92951 (16)	0.0478 (7)
O(8)	0.9339 (2)	0.15184 (8)	0.33101 (15)	0.0372 (6)
O(9)	1.1062 (2)	0.08238 (7)	0.34465 (14)	0.0308 (5)
O(10)	0.8242 (2)	0.07441 (7)	0.71045 (14)	0.0307 (5)
O(11)	0.7854 (2)	0.22309 (8)	0.64640 (16)	0.0475 (7)
O(12)	0.8095 (2)	0.16035 (7)	0.80390 (14)	0.0296 (5)
O(13)	0.6895 (2)	0.08724 (8)	0.87353 (15)	0.0357 (6)
O(14)	1.0163 (2)	0.20864 (9)	0.91436 (17)	0.0518 (8)
C(1)	0.4133 (3)	0.10906 (10)	0.5791 (2)	0.0241 (7)
C(2)	0.3838 (3)	0.13478 (10)	0.49118 (19)	0.0260 (7)
C(3)	0.4498 (3)	0.12462 (10)	0.4152 (2)	0.0262 (7)
C(4)	0.5457 (3)	0.08738 (10)	0.42410 (19)	0.0242 (7)
C(5)	0.5741 (3)	0.06160 (10)	0.5105 (2)	0.0262 (7)
C(6)	0.5080 (3)	0.07258 (10)	0.5872 (2)	0.0253 (7)
C(7)	0.3190 (3)	0.18146 (11)	0.3079 (2)	0.0390 (9)
C(8)	0.6995 (3)	0.04042 (10)	0.3506 (2)	0.0296 (8)
C(9)	0.7502 (3)	0.03888 (13)	0.2561 (2)	0.0419 (10)
C(10)	0.3426 (3)	0.12164 (10)	0.6632 (2)	0.0271 (7)
C(11)	0.4245 (3)	0.15808 (10)	0.7333 (2)	0.0268 (7)
C(12)	0.4476 (3)	0.20437 (11)	0.6829 (2)	0.0361 (9)
C(13)	0.3800 (3)	0.15276 (11)	0.9010 (2)	0.0310 (8)
C(14)	0.3031 (3)	0.11713 (12)	0.9350 (2)	0.0306 (8)
C(15)	0.3344 (3)	0.10274 (13)	1.0327 (2)	0.0364 (9)
C(16)	0.4424 (3)	0.12367 (13)	1.0950 (2)	0.0396 (9)
C(17)	0.5179 (3)	0.15965 (13)	1.0630 (2)	0.0394 (9)

C(18)	0.4864 (3)	0.17446 (12)	0.9666 (2)	0.0336 (8)
C(19)	0.1179 (3)	0.06067 (12)	0.9001 (2)	0.0399 (10)
C(20)	0.6557 (4)	0.23658 (15)	0.9951 (2)	0.0607 (13)
C(21)	0.9136 (3)	0.10908 (10)	0.57963 (19)	0.0245 (7)
C(22)	0.8872 (3)	0.13658 (10)	0.4944 (2)	0.0267 (7)
C(23)	0.9542 (3)	0.12739 (10)	0.4183 (2)	0.0267 (7)
C(24)	1.0484 (3)	0.08982 (10)	0.4250 (2)	0.0257 (7)
C(25)	1.0758 (3)	0.06276 (11)	0.5098 (2)	0.0275 (8)
C(26)	1.0083 (3)	0.07255 (10)	0.5861 (2)	0.0272 (7)
C(27)	0.8261 (3)	0.18541 (12)	0.3144 (2)	0.0431 (10)
C(28)	1.1946 (3)	0.04152 (11)	0.3470 (2)	0.0326 (8)
C(29)	1.2407 (4)	0.03979 (13)	0.2500 (2)	0.0456 (10)
C(30)	0.8354 (3)	0.11832 (10)	0.66079 (19)	0.0246 (7)
C(31)	0.9029 (3)	0.15579 (10)	0.7346 (2)	0.0273 (7)
C(32)	0.9155 (3)	0.20479 (11)	0.6913 (2)	0.0342 (9)
C(33)	0.8574 (3)	0.14663 (11)	0.8994 (2)	0.0301 (8)
C(34)	0.7920 (3)	0.10971 (12)	0.9378 (2)	0.0311 (8)
C(35)	0.8316 (3)	0.09725 (14)	1.0365 (2)	0.0433 (10)
C(36)	0.9362 (3)	0.12216 (15)	1.0940 (2)	0.0477 (11)
C(37)	1.0023 (3)	0.15938 (15)	1.0574 (2)	0.0494 (11)
C(38)	0.9632 (3)	0.17161 (12)	0.9596 (2)	0.0366 (9)
C(39)	0.6114 (3)	0.05122 (12)	0.9101 (2)	0.0439 (10)
C(40)	1.1206 (4)	0.23640 (16)	0.9716 (3)	0.0668 (14)
H(2)	0.3186	0.1590	0.4841	0.031*
H(5)	0.6376	0.0369	0.5173	0.031*
H(6)	0.5278	0.0551	0.6446	0.030*
H(15)	0.2826	0.0791	1.0553	0.045*
H(16)	0.4646	0.1135	1.1594	0.048*
H(17)	0.5897	0.1739	1.1059	0.047*
H(22)	0.8237	0.1613	0.4891	0.032*
H(25)	1.1393	0.0381	0.5156	0.033*
H(26)	1.0273	0.0542	0.6425	0.033*
H(35)	0.7879	0.0725	1.0626	0.053*
H(36)	0.9629	0.1138	1.1592	0.057*
H(37)	1.0721	0.1760	1.0976	0.059*
H(10A)	0.2517	0.1348	0.6370	0.033*
H(11A)	0.5124	0.1444	0.7652	0.033*
H(30)	0.7429	0.1293	0.6318	0.030*
H(31)	0.9930	0.1446	0.7682	0.033*
H(8A)	0.7758	0.0454	0.4043	0.036*
H(8B)	0.6536	0.0108	0.3602	0.036*
H(12A)	0.3615	0.2216	0.6695	0.043*
H(12B)	0.4760	0.1967	0.6221	0.043*
H(28A)	1.2733	0.0447	0.3996	0.041*
H(28B)	1.1448	0.0127	0.3563	0.040*
H(32A)	0.9735	0.2025	0.6429	0.041*
H(32B)	0.9570	0.2263	0.7428	0.041*
H(7A)	0.2355	0.1658	0.2784	0.048*

H(7B)	0.3409	0.2056	0.2648	0.048*
H(7C)	0.3075	0.1959	0.3681	0.048*
H(19A)	0.1582	0.0305	0.8892	0.049*
H(19B)	0.0255	0.0619	0.8639	0.049*
H(19C)	0.1172	0.0644	0.9682	0.049*
H(20A)	0.6146	0.2630	1.0225	0.075*
H(20B)	0.7239	0.2482	0.9605	0.075*
H(20C)	0.6980	0.2156	1.0463	0.075*
H(27A)	0.7432	0.1700	0.2827	0.053*
H(27B)	0.8485	0.2106	0.2736	0.053*
H(27C)	0.8130	0.1984	0.3754	0.052*
H(39A)	0.6549	0.0209	0.9068	0.056*
H(39B)	0.5204	0.0503	0.8717	0.055*
H(39C)	0.6066	0.0582	0.9766	0.055*
H(40A)	1.0798	0.2624	1.0002	0.081*
H(40B)	1.1809	0.2486	0.9312	0.081*
H(40C)	1.1720	0.2169	1.0221	0.081*
H(9A)	0.6911	0.0188	0.2107	0.053*
H(9B)	0.8418	0.0263	0.2672	0.053*
H(9C)	0.7501	0.0705	0.2299	0.053*
H(3)	0.3286	0.0846	0.7717	0.040*
H(29A)	1.1769	0.0212	0.2048	0.058*
H(29B)	1.3301	0.0255	0.2586	0.058*
H(29C)	1.2446	0.0716	0.2253	0.058*
H(4)	0.5138	0.2524	0.7713	0.058*
H(10)	0.8214	0.0799	0.7677	0.038*
H(11)	0.7260	0.2125	0.6741	0.057*

Atomic displacement parameters (Å²)

	U^{11}	U^{22}	U^{33}	U^{12}	U^{13}	U^{23}
O(1)	0.0501 (14)	0.0351 (12)	0.0190 (10)	0.0097 (10)	0.0106 (9)	0.0096 (8)
O(2)	0.0363 (13)	0.0358 (11)	0.0216 (10)	0.0068 (10)	0.0121 (9)	0.0019 (8)
O(3)	0.0427 (13)	0.0333 (11)	0.0228 (10)	-0.0069 (10)	0.0131 (9)	-0.0002 (8)
O(4)	0.0571 (17)	0.0383 (13)	0.0485 (14)	-0.0046 (12)	0.0134 (12)	-0.0073 (11)
O(5)	0.0382 (13)	0.0441 (13)	0.0178 (10)	0.0123 (10)	0.0100 (9)	0.0017 (9)
O(6)	0.0318 (12)	0.0519 (14)	0.0216 (10)	-0.0016 (10)	0.0081 (9)	0.0005 (9)
O(7)	0.0552 (17)	0.0563 (15)	0.0331 (12)	-0.0172 (13)	0.0115 (11)	-0.0087 (11)
O(8)	0.0493 (15)	0.0416 (13)	0.0234 (10)	0.0132 (11)	0.0139 (10)	0.0109 (9)
O(9)	0.0384 (13)	0.0334 (11)	0.0236 (10)	0.0044 (9)	0.0136 (9)	0.0017 (8)
O(10)	0.0415 (13)	0.0300 (11)	0.0224 (10)	-0.0044 (9)	0.0104 (9)	-0.0004 (8)
O(11)	0.0620 (18)	0.0404 (13)	0.0394 (13)	-0.0062 (12)	0.0077 (12)	0.0078 (10)
O(12)	0.0345 (12)	0.0377 (12)	0.0174 (9)	0.0038 (10)	0.0069 (8)	-0.0001 (8)
O(13)	0.0365 (13)	0.0475 (13)	0.0255 (11)	-0.0025 (10)	0.0117 (9)	0.0032 (9)
O(14)	0.0590 (17)	0.0576 (16)	0.0393 (14)	-0.0221 (14)	0.0111 (12)	-0.0151 (12)
C(1)	0.0261 (16)	0.0270 (15)	0.0198 (13)	-0.0055 (12)	0.0054 (11)	-0.0026 (11)
C(2)	0.0308 (17)	0.0258 (15)	0.0214 (14)	0.0031 (13)	0.0044 (12)	-0.0006 (11)
C(3)	0.0358 (18)	0.0248 (15)	0.0177 (13)	0.0012 (13)	0.0049 (12)	0.0016 (11)

C(4)	0.0244 (15)	0.0303 (15)	0.0191 (13)	-0.0027 (12)	0.0072 (11)	-0.0034 (11)
C(5)	0.0275 (16)	0.0271 (15)	0.0247 (14)	-0.0005 (13)	0.0067 (12)	0.0024 (11)
C(6)	0.0259 (16)	0.0296 (15)	0.0195 (13)	-0.0032 (13)	0.0021 (12)	0.0029 (11)
C(7)	0.056 (2)	0.0333 (17)	0.0290 (17)	0.0142 (16)	0.0112 (16)	0.0086 (14)
C(8)	0.0323 (18)	0.0249 (15)	0.0332 (16)	0.0015 (13)	0.0106 (14)	0.0002 (12)
C(9)	0.049 (2)	0.048 (2)	0.0348 (17)	0.0028 (17)	0.0235 (16)	-0.0029 (15)
C(10)	0.0289 (16)	0.0329 (16)	0.0199 (14)	-0.0009 (13)	0.0062 (12)	0.0012 (12)
C(11)	0.0300 (16)	0.0321 (16)	0.0194 (13)	0.0027 (13)	0.0076 (12)	0.0004 (12)
C(12)	0.052 (2)	0.0299 (16)	0.0259 (15)	-0.0069 (15)	0.0056 (15)	-0.0043 (13)
C(13)	0.0329 (18)	0.0421 (18)	0.0178 (13)	0.0096 (15)	0.0047 (12)	-0.0014 (12)
C(14)	0.0275 (17)	0.0443 (19)	0.0208 (14)	0.0047 (14)	0.0065 (12)	-0.0036 (13)
C(15)	0.0345 (18)	0.058 (2)	0.0200 (15)	0.0029 (16)	0.0121 (13)	0.0029 (14)
C(16)	0.044 (2)	0.057 (2)	0.0189 (15)	0.0063 (18)	0.0094 (14)	0.0012 (14)
C(17)	0.0332 (19)	0.060 (2)	0.0245 (16)	-0.0016 (17)	0.0039 (14)	-0.0100 (15)
C(18)	0.0365 (19)	0.0431 (19)	0.0243 (15)	-0.0003 (15)	0.0136 (13)	-0.0048 (13)
C(19)	0.036 (2)	0.050 (2)	0.0362 (18)	-0.0038 (16)	0.0124 (15)	-0.0040 (15)
C(20)	0.071 (3)	0.070 (2)	0.046 (2)	-0.028 (2)	0.024 (2)	-0.024 (2)
C(21)	0.0291 (16)	0.0282 (15)	0.0167 (13)	-0.0052 (13)	0.0060 (11)	-0.0021 (11)
C(22)	0.0296 (17)	0.0283 (15)	0.0227 (14)	0.0040 (13)	0.0066 (12)	0.0001 (12)
C(23)	0.0326 (17)	0.0297 (15)	0.0181 (13)	-0.0004 (13)	0.0056 (12)	0.0042 (11)
C(24)	0.0281 (16)	0.0303 (16)	0.0202 (14)	-0.0006 (13)	0.0086 (12)	-0.0015 (11)
C(25)	0.0274 (16)	0.0306 (16)	0.0259 (15)	0.0030 (13)	0.0083 (12)	0.0032 (12)
C(26)	0.0294 (17)	0.0321 (16)	0.0199 (14)	-0.0020 (13)	0.0041 (12)	0.0039 (12)
C(27)	0.055 (2)	0.044 (2)	0.0307 (17)	0.0150 (18)	0.0102 (16)	0.0121 (15)
C(28)	0.041 (2)	0.0267 (16)	0.0339 (17)	0.0018 (14)	0.0170 (15)	0.0001 (13)
C(29)	0.056 (2)	0.048 (2)	0.0412 (19)	0.0014 (18)	0.0292 (18)	-0.0037 (16)
C(30)	0.0278 (16)	0.0270 (15)	0.0197 (13)	-0.0041 (13)	0.0061 (12)	-0.0014 (11)
C(31)	0.0279 (17)	0.0344 (16)	0.0207 (14)	-0.0015 (13)	0.0077 (12)	-0.0029 (12)
C(32)	0.045 (2)	0.0308 (16)	0.0271 (16)	-0.0052 (15)	0.0072 (14)	-0.0020 (13)
C(33)	0.0283 (17)	0.0454 (19)	0.0174 (13)	0.0060 (14)	0.0065 (12)	-0.0045 (13)
C(34)	0.0270 (17)	0.0464 (19)	0.0210 (14)	0.0049 (14)	0.0072 (12)	-0.0036 (13)
C(35)	0.043 (2)	0.069 (2)	0.0204 (15)	0.0116 (19)	0.0134 (15)	0.0080 (15)
C(36)	0.047 (2)	0.080 (2)	0.0168 (15)	0.011 (2)	0.0063 (15)	-0.0012 (17)
C(37)	0.042 (2)	0.084 (2)	0.0226 (16)	0.002 (2)	0.0071 (15)	-0.0151 (18)
C(38)	0.0382 (19)	0.048 (2)	0.0244 (16)	0.0035 (16)	0.0074 (14)	-0.0080 (14)
C(39)	0.043 (2)	0.046 (2)	0.048 (2)	-0.0008 (17)	0.0241 (17)	0.0039 (17)
C(40)	0.057 (2)	0.075 (3)	0.071 (2)	-0.020 (2)	0.018 (2)	-0.036 (2)

Geometric parameters (Å, °)

O(1)—C(3)	1.375 (3)	C(36)—C(37)	1.383 (5)
O(1)—C(7)	1.427 (4)	C(37)—C(38)	1.392 (4)
O(2)—C(4)	1.372 (3)	O(3)—H(3)	0.819
O(2)—C(8)	1.434 (3)	O(4)—H(4)	0.821
O(3)—C(10)	1.424 (3)	O(10)—H(10)	0.820
O(4)—C(12)	1.428 (3)	O(11)—H(11)	0.820
O(5)—C(11)	1.475 (3)	C(2)—H(2)	0.930
O(5)—C(13)	1.392 (3)	C(5)—H(5)	0.930

O(6)—C(14)	1.371 (3)	C(6)—H(6)	0.930
O(6)—C(19)	1.439 (4)	C(7)—H(7A)	0.960
O(7)—C(18)	1.377 (4)	C(7)—H(7B)	0.960
O(7)—C(20)	1.427 (4)	C(7)—H(7C)	0.960
O(8)—C(23)	1.381 (3)	C(8)—H(8A)	0.970
O(8)—C(27)	1.412 (4)	C(8)—H(8B)	0.970
O(9)—C(24)	1.371 (3)	C(9)—H(9A)	0.960
O(9)—C(28)	1.441 (3)	C(9)—H(9B)	0.960
O(10)—C(30)	1.429 (3)	C(9)—H(9C)	0.960
O(11)—C(32)	1.421 (4)	C(10)—H(10A)	0.980
O(12)—C(31)	1.469 (3)	C(11)—H(11A)	0.980
O(12)—C(33)	1.384 (3)	C(12)—H(12A)	0.970
O(13)—C(34)	1.376 (3)	C(12)—H(12B)	0.970
O(13)—C(39)	1.427 (4)	C(15)—H(15)	0.930
O(14)—C(38)	1.373 (4)	C(16)—H(16)	0.930
O(14)—C(40)	1.416 (4)	C(17)—H(17)	0.930
C(1)—C(2)	1.408 (3)	C(19)—H(19A)	0.960
C(1)—C(6)	1.380 (4)	C(19)—H(19B)	0.960
C(1)—C(10)	1.521 (4)	C(19)—H(19C)	0.960
C(2)—C(3)	1.381 (4)	C(20)—H(20A)	0.960
C(3)—C(4)	1.404 (4)	C(20)—H(20B)	0.960
C(4)—C(5)	1.391 (3)	C(20)—H(20C)	0.960
C(5)—C(6)	1.395 (4)	C(22)—H(22)	0.930
C(8)—C(9)	1.501 (4)	C(25)—H(25)	0.930
C(10)—C(11)	1.538 (3)	C(26)—H(26)	0.930
C(11)—C(12)	1.516 (4)	C(27)—H(27A)	0.960
C(13)—C(14)	1.395 (4)	C(27)—H(27B)	0.960
C(13)—C(18)	1.400 (4)	C(27)—H(27C)	0.960
C(14)—C(15)	1.402 (4)	C(28)—H(28A)	0.970
C(15)—C(16)	1.378 (4)	C(28)—H(28B)	0.970
C(16)—C(17)	1.383 (5)	C(29)—H(29A)	0.960
C(17)—C(18)	1.388 (4)	C(29)—H(29B)	0.960
C(21)—C(22)	1.402 (3)	C(29)—H(29C)	0.960
C(21)—C(26)	1.383 (4)	C(30)—H(30)	0.980
C(21)—C(30)	1.515 (4)	C(31)—H(31)	0.980
C(22)—C(23)	1.383 (4)	C(32)—H(32A)	0.970
C(23)—C(24)	1.401 (4)	C(32)—H(32B)	0.970
C(24)—C(25)	1.392 (3)	C(35)—H(35)	0.930
C(25)—C(26)	1.391 (4)	C(36)—H(36)	0.930
C(28)—C(29)	1.512 (5)	C(37)—H(37)	0.930
C(30)—C(31)	1.535 (3)	C(39)—H(39A)	0.960
C(31)—C(32)	1.518 (4)	C(39)—H(39B)	0.960
C(33)—C(34)	1.384 (4)	C(39)—H(39C)	0.960
C(33)—C(38)	1.403 (4)	C(40)—H(40A)	0.960
C(34)—C(35)	1.405 (4)	C(40)—H(40B)	0.960
C(35)—C(36)	1.377 (4)	C(40)—H(40C)	0.960
O(1)···C(16) ⁱ	3.335 (3)	H(36)···H(29C) ^{ix}	3.017

O(1)···C(29) ⁱⁱ	3.598 (4)	H(37)···O(4) ^{iv}	3.219
O(2)···C(22)	3.548 (3)	H(37)···O(11) ^{iv}	3.525
O(3)···C(8) ⁱⁱⁱ	3.459 (3)	H(37)···C(7) ^{xv}	3.456
O(3)···C(9) ⁱⁱⁱ	3.429 (4)	H(37)···C(15) ^{vi}	3.567
O(3)···C(25) ⁱⁱ	3.444 (3)	H(37)···H(15) ^{vi}	3.545
O(3)···C(26) ⁱⁱ	3.328 (3)	H(37)···H(7A) ^{xv}	2.747
O(4)···O(11)	2.882 (3)	H(37)···H(7B) ^{xv}	3.303
O(4)···O(12)	3.301 (3)	H(37)···H(4) ^{iv}	3.289
O(4)···C(7) ^{iv}	3.558 (4)	H(37)···H(11) ^{iv}	3.558
O(4)···C(27) ^v	3.475 (4)	H(10A)···C(21) ⁱⁱ	3.378
O(6)···C(31) ⁱⁱ	3.540 (3)	H(10A)···C(24) ⁱⁱ	3.491
O(6)···C(38) ⁱⁱ	3.513 (4)	H(10A)···C(25) ⁱⁱ	3.021
O(8)···C(36) ⁱ	3.422 (3)	H(10A)···C(26) ⁱⁱ	2.958
O(9)···C(2) ^{vi}	3.436 (3)	H(10A)···H(25) ⁱⁱ	3.284
O(9)···C(3) ^{vi}	3.569 (3)	H(10A)···H(26) ⁱⁱ	3.187
O(9)···C(7) ^{vi}	3.588 (4)	H(10A)···H(31) ⁱⁱ	3.440
O(10)···C(5)	3.387 (3)	H(10A)···H(32A) ⁱⁱ	3.367
O(10)···C(6)	3.283 (3)	H(10A)···H(20A) ^{viii}	3.437
O(10)···C(19) ^{vi}	3.570 (3)	H(11A)···O(12)	2.930
O(10)···C(28) ^{vii}	3.348 (3)	H(11A)···O(13)	2.636
O(10)···C(29) ^{vii}	3.336 (4)	H(11A)···C(33)	3.580
O(11)···O(4)	2.882 (3)	H(11A)···C(34)	3.455
O(11)···C(7) ^{iv}	3.479 (3)	H(11A)···C(39)	3.341
O(11)···C(12)	3.527 (4)	H(11A)···H(30)	3.242
O(11)···C(40) ^{viii}	2.903 (4)	H(11A)···H(39B)	3.025
O(12)···O(4)	3.301 (3)	H(11A)···H(10)	3.556
O(13)···C(11)	3.572 (3)	H(11A)···H(11)	3.286
O(13)···C(18)	3.571 (4)	H(30)···C(1)	3.265
C(1)···C(25) ⁱⁱ	3.553 (4)	H(30)···C(4)	3.390
C(2)···O(9) ⁱⁱ	3.436 (3)	H(30)···C(5)	2.866
C(2)···C(24) ⁱⁱ	3.517 (4)	H(30)···C(6)	2.794
C(3)···O(9) ⁱⁱ	3.569 (3)	H(30)···H(5)	3.122
C(3)···C(28) ⁱⁱ	3.442 (4)	H(30)···H(6)	3.013
C(5)···O(10)	3.387 (3)	H(30)···H(11A)	3.242
C(5)···C(21)	3.582 (4)	H(30)···H(12B)	3.238
C(5)···C(30)	3.407 (3)	H(31)···O(5) ^{vi}	3.463
C(6)···O(10)	3.283 (3)	H(31)···O(6) ^{vi}	2.580
C(6)···C(30)	3.465 (4)	H(31)···C(14) ^{vi}	3.576
C(7)···O(4) ^{viii}	3.558 (4)	H(31)···C(19) ^{vi}	3.101
C(7)···O(9) ⁱⁱ	3.588 (4)	H(31)···H(10A) ^{vi}	3.440
C(7)···O(11) ^{viii}	3.479 (3)	H(31)···H(19B) ^{vi}	2.667
C(8)···O(3) ⁱⁱⁱ	3.459 (3)	H(8A)···C(21)	3.132
C(8)···C(23)	3.513 (4)	H(8A)···C(22)	2.973
C(9)···O(3) ⁱⁱⁱ	3.429 (4)	H(8A)···C(23)	2.889
C(10)···C(25) ⁱⁱ	3.492 (3)	H(8A)···C(24)	2.944
C(10)···C(26) ⁱⁱ	3.566 (4)	H(8A)···C(25)	3.101
C(11)···O(13)	3.572 (3)	H(8A)···C(25) ^{vii}	3.486
C(12)···O(11)	3.527 (4)	H(8A)···C(26)	3.186

C(16)···O(1) ^{ix}	3.335 (3)	H(8A)···H(22)	3.464
C(18)···O(13)	3.571 (4)	H(8A)···H(25) ^{vii}	2.663
C(19)···O(10) ⁱⁱ	3.570 (3)	H(8A)···H(26) ^{vii}	3.542
C(19)···C(33) ⁱⁱ	3.536 (4)	H(8B)···O(3) ⁱⁱⁱ	2.738
C(21)···C(5)	3.582 (4)	H(8B)···C(1) ⁱⁱⁱ	3.562
C(22)···O(2)	3.548 (3)	H(8B)···C(6) ⁱⁱⁱ	3.006
C(23)···C(8)	3.513 (4)	H(8B)···C(25) ^{vii}	3.596
C(24)···C(2) ^{vi}	3.517 (4)	H(8B)···H(6) ⁱⁱⁱ	2.573
C(25)···O(3) ^{vi}	3.444 (3)	H(8B)···H(25) ^{vii}	2.787
C(25)···C(1) ^{vi}	3.553 (4)	H(8B)···H(3) ⁱⁱⁱ	3.275
C(25)···C(10) ^{vi}	3.492 (3)	H(8B)···H(29B) ⁱⁱ	3.283
C(26)···O(3) ^{vi}	3.328 (3)	H(12A)···C(20) ^{viii}	3.100
C(26)···C(10) ^{vi}	3.566 (4)	H(12A)···C(27) ^v	3.362
C(27)···O(4) ^x	3.475 (4)	H(12A)···H(20A) ^{viii}	2.917
C(28)···O(10) ^{vii}	3.348 (3)	H(12A)···H(20B) ^{viii}	3.100
C(28)···C(3) ^{vi}	3.442 (4)	H(12A)···H(20C) ^{viii}	2.764
C(29)···O(1) ^{vi}	3.598 (4)	H(12A)···H(27B) ^v	2.414
C(29)···O(10) ^{vii}	3.336 (4)	H(12A)···H(40A) ^{viii}	3.529
C(30)···C(5)	3.407 (3)	H(12B)···O(11)	3.115
C(30)···C(6)	3.465 (4)	H(12B)···C(40) ^{viii}	3.341
C(31)···O(6) ^{vi}	3.540 (3)	H(12B)···H(30)	3.238
C(33)···C(19) ^{vi}	3.536 (4)	H(12B)···H(20B) ^{viii}	3.408
C(36)···O(8) ^{ix}	3.422 (3)	H(12B)···H(40A) ^{viii}	2.438
C(38)···O(6) ^{vi}	3.513 (4)	H(12B)···H(40C) ^{viii}	3.556
C(40)···O(11) ^{iv}	2.903 (4)	H(12B)···H(11)	2.490
O(1)···H(16) ⁱ	2.614	H(28A)···O(1) ^{vi}	3.506
O(1)···H(28A) ⁱⁱ	3.506	H(28A)···C(1) ^{vi}	3.189
O(1)···H(27A)	3.367	H(28A)···C(2) ^{vi}	2.950
O(1)···H(29C) ⁱⁱ	2.975	H(28A)···C(3) ^{vi}	2.829
O(2)···H(16) ⁱ	2.862	H(28A)···C(4) ^{vi}	2.918
O(2)···H(22)	3.523	H(28A)···C(5) ^{vi}	3.129
O(2)···H(27A)	3.090	H(28A)···C(5) ^{vii}	3.471
O(2)···H(29B) ⁱⁱ	3.152	H(28A)···C(6) ^{vi}	3.256
O(3)···H(25) ⁱⁱ	3.241	H(28A)···H(2) ^{vi}	3.419
O(3)···H(26) ⁱⁱ	3.030	H(28A)···H(5) ^{vii}	2.643
O(3)···H(8B) ⁱⁱⁱ	2.738	H(28A)···H(6) ^{vii}	3.547
O(3)···H(39B)	2.753	H(28B)···O(10) ^{vii}	2.656
O(3)···H(9A) ⁱⁱⁱ	2.949	H(28B)···C(26) ^{vii}	3.025
O(3)···H(9B) ⁱⁱⁱ	3.423	H(28B)···H(5) ^{vii}	2.877
O(4)···H(37) ^{viii}	3.219	H(28B)···H(26) ^{vii}	2.541
O(4)···H(7A) ^{iv}	3.339	H(28B)···H(9B)	3.053
O(4)···H(7B) ^{iv}	3.299	H(28B)···H(10) ^{vii}	3.176
O(4)···H(7C) ^{iv}	3.451	H(32A)···C(20) ^x	3.448
O(4)···H(27B) ^v	2.652	H(32A)···H(10A) ^{vi}	3.367
O(4)···H(40A) ^{viii}	3.388	H(32A)···H(7B) ^{iv}	3.483
O(4)···H(11)	2.191	H(32A)···H(20A) ^x	2.576
O(5)···H(31) ⁱⁱ	3.463	H(32B)···C(7) ^{iv}	3.143
O(5)···H(27B) ^v	3.389	H(32B)···H(7B) ^{iv}	2.282

O(5)···H(40B) ⁱⁱ	3.390	H(32B)···H(7C) ^{iv}	3.322
O(6)···H(26) ⁱⁱ	3.512	H(7A)···O(4) ^{viii}	3.339
O(6)···H(31) ⁱⁱ	2.580	H(7A)···O(8) ⁱⁱ	3.240
O(6)···H(39B)	3.478	H(7A)···O(9) ⁱⁱ	2.905
O(7)···H(27B) ^v	3.464	H(7A)···C(29) ⁱⁱ	3.560
O(7)···H(27C) ^v	3.462	H(7A)···C(37) ^{xi}	3.496
O(8)···H(36) ⁱ	2.694	H(7A)···H(16) ⁱ	3.397
O(8)···H(7A) ^{vi}	3.240	H(7A)···H(36) ^{xi}	3.243
O(8)···H(9C)	3.092	H(7A)···H(37) ^{xi}	2.747
O(8)···H(4) ^x	2.966	H(7A)···H(20B) ^{viii}	3.527
O(9)···H(2) ^{vi}	3.363	H(7A)···H(29C) ⁱⁱ	2.753
O(9)···H(36) ⁱ	2.851	H(7A)···H(4) ^{viii}	3.169
O(9)···H(7A) ^{vi}	2.905	H(7B)···O(4) ^{viii}	3.299
O(9)···H(9B)	3.076	H(7B)···O(11) ^{viii}	2.589
O(10)···H(5)	3.152	H(7B)···O(14) ^{viii}	3.437
O(10)···H(6)	2.962	H(7B)···C(16) ⁱ	3.585
O(10)···H(28B) ^{vii}	2.656	H(7B)···C(32) ^{viii}	2.867
O(10)···H(19B) ^{vi}	2.663	H(7B)···H(16) ⁱ	3.325
O(10)···H(29A) ^{vii}	2.935	H(7B)···H(37) ^{xi}	3.303
O(10)···H(29B) ^{vii}	3.264	H(7B)···H(32A) ^{viii}	3.483
O(11)···H(37) ^{viii}	3.525	H(7B)···H(32B) ^{viii}	2.282
O(11)···H(12B)	3.115	H(7B)···H(20B) ^{viii}	3.426
O(11)···H(7B) ^{iv}	2.589	H(7B)···H(40C) ^{xi}	3.503
O(11)···H(40A) ^{viii}	2.632	H(7B)···H(4) ^{viii}	3.473
O(11)···H(40B) ^{viii}	3.094	H(7B)···H(11) ^{viii}	2.764
O(11)···H(40C) ^{viii}	2.526	H(7C)···O(4) ^{viii}	3.451
O(11)···H(4)	3.577	H(7C)···O(14) ^{viii}	3.375
O(12)···H(11A)	2.930	H(7C)···C(20) ^{viii}	3.168
O(12)···H(19B) ^{vi}	3.501	H(7C)···H(32B) ^{viii}	3.322
O(12)···H(20B)	3.507	H(7C)···H(20A) ^{viii}	3.352
O(13)···H(6)	3.419	H(7C)···H(20B) ^{viii}	2.288
O(13)···H(11A)	2.636	H(7C)···H(40A) ^{viii}	3.192
O(13)···H(19B) ^{vi}	3.439	H(7C)···H(4) ^{viii}	3.309
O(13)···H(3)	3.596	H(19A)···C(9) ⁱⁱⁱ	3.075
O(13)···H(29A) ^{vii}	3.574	H(19A)···H(26) ⁱⁱ	3.512
O(14)···H(7B) ^{iv}	3.437	H(19A)···H(35) ^{xii}	2.994
O(14)···H(7C) ^{iv}	3.375	H(19A)···H(39A) ^{xii}	3.414
O(14)···H(20B)	3.285	H(19A)···H(9A) ⁱⁱⁱ	2.629
C(1)···H(25) ⁱⁱ	3.353	H(19A)···H(9B) ⁱⁱⁱ	2.707
C(1)···H(30)	3.265	H(19A)···H(9C) ⁱⁱⁱ	3.496
C(1)···H(8B) ⁱⁱⁱ	3.562	H(19B)···O(10) ⁱⁱ	2.663
C(1)···H(28A) ⁱⁱ	3.189	H(19B)···O(12) ⁱⁱ	3.501
C(2)···H(28A) ⁱⁱ	2.950	H(19B)···O(13) ⁱⁱ	3.439
C(2)···H(40A) ^{viii}	3.469	H(19B)···C(30) ⁱⁱ	3.479
C(3)···H(28A) ⁱⁱ	2.829	H(19B)···C(31) ⁱⁱ	3.295
C(3)···H(40A) ^{viii}	3.542	H(19B)···C(33) ⁱⁱ	3.001
C(3)···H(29B) ⁱⁱ	3.600	H(19B)···C(34) ⁱⁱ	3.026
C(3)···H(29C) ⁱⁱ	3.371	H(19B)···C(35) ⁱⁱ	3.505

C(4)···H(22)	3.434	H(19B)···C(38) ⁱⁱ	3.460
C(4)···H(30)	3.390	H(19B)···H(26) ⁱⁱ	3.107
C(4)···H(28A) ⁱⁱ	2.918	H(19B)···H(31) ⁱⁱ	2.667
C(4)···H(29B) ⁱⁱ	3.328	H(19B)···H(9B) ⁱⁱⁱ	3.485
C(5)···H(5) ⁱⁱⁱ	3.450	H(19B)···H(29A) ⁱⁱⁱ	3.110
C(5)···H(30)	2.866	H(19B)···H(10) ⁱⁱ	2.267
C(5)···H(28A) ⁱⁱ	3.129	H(19C)···C(33) ⁱⁱ	3.460
C(5)···H(28A) ^{vii}	3.471	H(19C)···C(34) ⁱⁱ	3.422
C(6)···H(5) ⁱⁱⁱ	3.586	H(19C)···C(35) ⁱⁱ	3.292
C(6)···H(30)	2.794	H(19C)···C(36) ⁱⁱ	3.188
C(6)···H(8B) ⁱⁱⁱ	3.006	H(19C)···C(37) ⁱⁱ	3.242
C(6)···H(28A) ⁱⁱ	3.256	H(19C)···C(38) ⁱⁱ	3.368
C(7)···H(16) ⁱ	3.345	H(19C)···H(39A) ^{xii}	3.521
C(7)···H(37) ^{xi}	3.456	H(19C)···H(29A) ^{xiii}	3.467
C(7)···H(32B) ^{viii}	3.143	H(19C)···H(29C) ^{xiii}	3.583
C(7)···H(20B) ^{viii}	3.180	H(20A)···C(22) ^v	3.586
C(7)···H(29C) ⁱⁱ	3.327	H(20A)···C(32) ^v	3.475
C(7)···H(4) ^{viii}	3.507	H(20A)···H(2) ^{iv}	3.099
C(7)···H(11) ^{viii}	3.543	H(20A)···H(22) ^v	3.545
C(8)···H(6) ⁱⁱⁱ	3.512	H(20A)···H(10A) ^{iv}	3.437
C(8)···H(25) ^{vii}	3.128	H(20A)···H(12A) ^{iv}	2.917
C(9)···H(16) ⁱ	3.577	H(20A)···H(32A) ^v	2.576
C(9)···H(26) ^{vii}	3.540	H(20A)···H(7C) ^{iv}	3.352
C(9)···H(35) ⁱ	2.957	H(20A)···H(27C) ^v	3.468
C(9)···H(36) ⁱ	3.436	H(20B)···O(12)	3.507
C(9)···H(19A) ⁱⁱⁱ	3.075	H(20B)···O(14)	3.285
C(9)···H(3) ⁱⁱⁱ	3.558	H(20B)···C(7) ^{iv}	3.180
C(10)···H(25) ⁱⁱ	3.501	H(20B)···C(33)	3.323
C(11)···H(11)	3.596	H(20B)···C(38)	3.206
C(12)···H(27B) ^v	2.958	H(20B)···H(2) ^{iv}	2.769
C(12)···H(40A) ^{viii}	3.224	H(20B)···H(12A) ^{iv}	3.100
C(12)···H(11)	2.800	H(20B)···H(12B) ^{iv}	3.408
C(13)···H(39B)	3.255	H(20B)···H(7A) ^{iv}	3.527
C(13)···H(39C)	3.511	H(20B)···H(7B) ^{iv}	3.426
C(13)···H(40B) ⁱⁱ	3.412	H(20B)···H(7C) ^{iv}	2.288
C(13)···H(40C) ⁱⁱ	3.421	H(20B)···H(40A)	3.494
C(14)···H(31) ⁱⁱ	3.576	H(20C)···C(33)	3.423
C(14)···H(39B)	3.112	H(20C)···C(34)	3.543
C(14)···H(39C)	3.390	H(20C)···C(35)	3.590
C(14)···H(40C) ⁱⁱ	3.410	H(20C)···C(36)	3.510
C(15)···H(37) ⁱⁱ	3.567	H(20C)···C(37)	3.387
C(15)···H(39A) ^{xii}	3.568	H(20C)···C(38)	3.339
C(15)···H(39B)	3.497	H(20C)···H(12A) ^{iv}	2.764
C(15)···H(39C)	3.208	H(20C)···H(27A) ^{ix}	3.494
C(15)···H(40C) ⁱⁱ	3.578	H(20C)···H(27B) ^{ix}	3.248
C(15)···H(29C) ^{xiii}	3.119	H(27A)···O(1)	3.367
C(16)···H(7B) ^{ix}	3.585	H(27A)···O(2)	3.090
C(16)···H(39C)	3.132	H(27A)···C(17) ⁱ	3.452

C(16)···H(9C) ^{ix}	3.596	H(27A)···H(16) ⁱ	3.366
C(16)···H(29C) ^{xiii}	3.267	H(27A)···H(17) ⁱ	2.649
C(17)···H(27A) ^{ix}	3.452	H(27A)···H(36) ⁱ	3.413
C(17)···H(39C)	3.279	H(27A)···H(20C) ⁱ	3.494
C(18)···H(39C)	3.469	H(27A)···H(40B) ^{viii}	3.226
C(18)···H(40C) ⁱⁱ	3.562	H(27A)···H(9C)	2.892
C(19)···H(26) ⁱⁱ	3.547	H(27A)···H(4) ^x	3.485
C(19)···H(31) ⁱⁱ	3.101	H(27B)···O(4) ^x	2.652
C(19)···H(9A) ⁱⁱⁱ	3.478	H(27B)···O(5) ^x	3.389
C(19)···H(9B) ⁱⁱⁱ	3.456	H(27B)···O(7) ^x	3.464
C(19)···H(10) ⁱⁱ	3.212	H(27B)···C(12) ^x	2.958
C(20)···H(2) ^{iv}	3.366	H(27B)···H(17) ⁱ	3.298
C(20)···H(12A) ^{iv}	3.100	H(27B)···H(36) ⁱ	3.452
C(20)···H(32A) ^v	3.448	H(27B)···H(12A) ^x	2.414
C(20)···H(7C) ^{iv}	3.168	H(27B)···H(20C) ⁱ	3.248
C(21)···H(5)	3.386	H(27B)···H(40B) ^{viii}	3.214
C(21)···H(10A) ^{vi}	3.378	H(27B)···H(4) ^x	1.947
C(21)···H(8A)	3.132	H(27C)···O(7) ^x	3.462
C(22)···H(8A)	2.973	H(27C)···C(40) ^{viii}	3.127
C(22)···H(20A) ^x	3.586	H(27C)···H(20A) ^x	3.468
C(23)···H(8A)	2.889	H(27C)···H(40A) ^{viii}	3.340
C(23)···H(9B)	3.586	H(27C)···H(40B) ^{viii}	2.220
C(23)···H(9C)	3.401	H(27C)···H(40C) ^{viii}	3.593
C(24)···H(2) ^{vi}	3.288	H(27C)···H(4) ^x	3.016
C(24)···H(10A) ^{vi}	3.491	H(39A)···C(15) ^{xii}	3.568
C(24)···H(8A)	2.944	H(39A)···C(29) ^{vii}	3.106
C(24)···H(9B)	3.245	H(39A)···H(15) ^{xii}	2.902
C(25)···H(25) ^{vii}	3.522	H(39A)···H(19A) ^{xii}	3.414
C(25)···H(10A) ^{vi}	3.021	H(39A)···H(19C) ^{xii}	3.521
C(25)···H(8A)	3.101	H(39A)···H(29A) ^{vii}	2.758
C(25)···H(8A) ^{vii}	3.486	H(39A)···H(29B) ^{vii}	2.682
C(25)···H(8B) ^{vii}	3.596	H(39A)···H(29C) ^{vii}	3.441
C(26)···H(10A) ^{vi}	2.958	H(39B)···O(3)	2.753
C(26)···H(8A)	3.186	H(39B)···O(6)	3.478
C(26)···H(28B) ^{vii}	3.025	H(39B)···C(13)	3.255
C(27)···H(17) ⁱ	3.393	H(39B)···C(14)	3.112
C(27)···H(36) ⁱ	3.422	H(39B)···C(15)	3.497
C(27)···H(12A) ^x	3.362	H(39B)···H(6)	3.192
C(27)···H(40B) ^{viii}	3.012	H(39B)···H(11A)	3.025
C(27)···H(9C)	3.468	H(39B)···H(9A) ⁱⁱⁱ	2.931
C(27)···H(4) ^x	2.703	H(39B)···H(3)	2.344
C(28)···H(5) ^{vii}	3.165	H(39B)···H(29B) ^{vii}	3.328
C(28)···H(26) ^{vii}	3.495	H(39C)···C(13)	3.511
C(28)···H(9B)	3.495	H(39C)···C(14)	3.390
C(29)···H(15) ^{xiv}	3.039	H(39C)···C(15)	3.208
C(29)···H(16) ^{xiv}	3.449	H(39C)···C(16)	3.132
C(29)···H(36) ⁱ	3.494	H(39C)···C(17)	3.279
C(29)···H(7A) ^{vi}	3.560	H(39C)···C(18)	3.469

C(29)···H(39A) ^{vii}	3.106	H(39C)···H(16)	3.507
C(29)···H(10) ^{vii}	3.415	H(39C)···H(9A) ^{ix}	3.406
C(30)···H(5)	3.407	H(39C)···H(9C) ^{ix}	3.575
C(30)···H(6)	3.502	H(40A)···O(4) ^{iv}	3.388
C(30)···H(19B) ^{vi}	3.479	H(40A)···O(11) ^{iv}	2.632
C(31)···H(19B) ^{vi}	3.295	H(40A)···C(2) ^{iv}	3.469
C(32)···H(7B) ^{iv}	2.867	H(40A)···C(3) ^{iv}	3.542
C(32)···H(20A) ^x	3.475	H(40A)···C(12) ^{iv}	3.224
C(33)···H(11A)	3.580	H(40A)···H(2) ^{iv}	3.379
C(33)···H(19B) ^{vi}	3.001	H(40A)···H(22) ^{iv}	3.259
C(33)···H(19C) ^{vi}	3.460	H(40A)···H(12A) ^{iv}	3.529
C(33)···H(20B)	3.323	H(40A)···H(12B) ^{iv}	2.438
C(33)···H(20C)	3.423	H(40A)···H(7C) ^{iv}	3.192
C(34)···H(11A)	3.455	H(40A)···H(20B)	3.494
C(34)···H(19B) ^{vi}	3.026	H(40A)···H(27C) ^{iv}	3.340
C(34)···H(19C) ^{vi}	3.422	H(40A)···H(11) ^{iv}	2.679
C(34)···H(20C)	3.543	H(40B)···O(5) ^{vi}	3.390
C(35)···H(17)	3.497	H(40B)···O(11) ^{iv}	3.094
C(35)···H(19B) ^{vi}	3.505	H(40B)···C(13) ^{vi}	3.412
C(35)···H(19C) ^{vi}	3.292	H(40B)···C(27) ^{iv}	3.012
C(35)···H(20C)	3.590	H(40B)···H(22) ^{iv}	2.937
C(35)···H(9C) ^{ix}	3.061	H(40B)···H(27A) ^{iv}	3.226
C(36)···H(19C) ^{vi}	3.188	H(40B)···H(27B) ^{iv}	3.214
C(36)···H(20C)	3.510	H(40B)···H(27C) ^{iv}	2.220
C(36)···H(9C) ^{ix}	3.235	H(40B)···H(11) ^{iv}	3.514
C(36)···H(29C) ^{ix}	3.553	H(40C)···O(11) ^{iv}	2.526
C(37)···H(15) ^{vi}	3.584	H(40C)···C(13) ^{vi}	3.421
C(37)···H(7A) ^{xv}	3.496	H(40C)···C(14) ^{vi}	3.410
C(37)···H(19C) ^{vi}	3.242	H(40C)···C(15) ^{vi}	3.578
C(37)···H(20C)	3.387	H(40C)···C(18) ^{vi}	3.562
C(38)···H(19B) ^{vi}	3.460	H(40C)···H(12B) ^{iv}	3.556
C(38)···H(19C) ^{vi}	3.368	H(40C)···H(7B) ^{xv}	3.503
C(38)···H(20B)	3.206	H(40C)···H(27C) ^{iv}	3.593
C(38)···H(20C)	3.339	H(40C)···H(11) ^{iv}	2.880
C(39)···H(11A)	3.341	H(9A)···O(3) ⁱⁱⁱ	2.949
C(39)···H(3)	3.232	H(9A)···C(19) ⁱⁱⁱ	3.478
C(39)···H(29A) ^{vii}	3.523	H(9A)···H(16) ⁱ	3.466
C(39)···H(29B) ^{vii}	3.326	H(9A)···H(35) ⁱ	2.871
C(40)···H(22) ^{iv}	3.491	H(9A)···H(19A) ⁱⁱⁱ	2.629
C(40)···H(12B) ^{iv}	3.341	H(9A)···H(39B) ⁱⁱⁱ	2.931
C(40)···H(27C) ^{iv}	3.127	H(9A)···H(39C) ⁱ	3.406
C(40)···H(11) ^{iv}	3.170	H(9A)···H(3) ⁱⁱⁱ	2.923
H(2)···O(9) ⁱⁱ	3.363	H(9B)···O(3) ⁱⁱⁱ	3.423
H(2)···C(20) ^{viii}	3.366	H(9B)···O(9)	3.076
H(2)···C(24) ⁱⁱ	3.288	H(9B)···C(19) ⁱⁱⁱ	3.456
H(2)···H(28A) ⁱⁱ	3.419	H(9B)···C(23)	3.586
H(2)···H(20A) ^{viii}	3.099	H(9B)···C(24)	3.245
H(2)···H(20B) ^{viii}	2.769	H(9B)···C(28)	3.495

H(2)···H(40A) ^{viii}	3.379	H(9B)···H(25) ^{vii}	3.509
H(5)···O(10)	3.152	H(9B)···H(26) ^{vii}	2.788
H(5)···C(5) ⁱⁱⁱ	3.450	H(9B)···H(35) ⁱ	3.094
H(5)···C(6) ⁱⁱⁱ	3.586	H(9B)···H(36) ⁱ	3.232
H(5)···C(21)	3.386	H(9B)···H(28B)	3.053
H(5)···C(28) ^{vii}	3.165	H(9B)···H(19A) ⁱⁱⁱ	2.707
H(5)···C(30)	3.407	H(9B)···H(19B) ⁱⁱⁱ	3.485
H(5)···H(5) ⁱⁱⁱ	3.389	H(9B)···H(3) ⁱⁱⁱ	3.536
H(5)···H(25) ^{vii}	3.151	H(9B)···H(29A)	3.600
H(5)···H(30)	3.122	H(9C)···O(8)	3.092
H(5)···H(28A) ^{vii}	2.643	H(9C)···C(16) ⁱ	3.596
H(5)···H(28B) ^{vii}	2.877	H(9C)···C(23)	3.401
H(5)···H(29B) ^{vii}	3.552	H(9C)···C(27)	3.468
H(6)···O(10)	2.962	H(9C)···C(35) ⁱ	3.061
H(6)···O(13)	3.419	H(9C)···C(36) ⁱ	3.235
H(6)···C(8) ⁱⁱⁱ	3.512	H(9C)···H(16) ⁱ	3.067
H(6)···C(30)	3.502	H(9C)···H(17) ⁱ	3.593
H(6)···H(30)	3.013	H(9C)···H(35) ⁱ	2.441
H(6)···H(8B) ⁱⁱⁱ	2.573	H(9C)···H(36) ⁱ	2.777
H(6)···H(28A) ^{vii}	3.547	H(9C)···H(19A) ⁱⁱⁱ	3.496
H(6)···H(39B)	3.192	H(9C)···H(27A)	2.892
H(6)···H(29B) ^{vii}	2.865	H(9C)···H(39C) ⁱ	3.575
H(6)···H(10)	3.168	H(3)···O(13)	3.596
H(15)···C(29) ^{xiii}	3.039	H(3)···C(9) ⁱⁱⁱ	3.558
H(15)···C(37) ⁱⁱ	3.584	H(3)···C(39)	3.232
H(15)···H(37) ⁱⁱ	3.545	H(3)···H(26) ⁱⁱ	3.300
H(15)···H(39A) ^{xii}	2.902	H(3)···H(8B) ⁱⁱⁱ	3.275
H(15)···H(29A) ^{xiii}	2.991	H(3)···H(39B)	2.344
H(15)···H(29B) ^{xiii}	3.171	H(3)···H(9A) ⁱⁱⁱ	2.923
H(15)···H(29C) ^{xiii}	2.486	H(3)···H(9B) ⁱⁱⁱ	3.536
H(16)···O(1) ^{ix}	2.614	H(29A)···O(10) ^{vii}	2.935
H(16)···O(2) ^{ix}	2.862	H(29A)···O(13) ^{vii}	3.574
H(16)···C(7) ^{ix}	3.345	H(29A)···C(39) ^{vii}	3.523
H(16)···C(9) ^{ix}	3.577	H(29A)···H(15) ^{xiv}	2.991
H(16)···C(29) ^{xiii}	3.449	H(29A)···H(36) ⁱ	3.341
H(16)···H(7A) ^{ix}	3.397	H(29A)···H(19B) ⁱⁱⁱ	3.110
H(16)···H(7B) ^{ix}	3.325	H(29A)···H(19C) ^{xiv}	3.467
H(16)···H(27A) ^{ix}	3.366	H(29A)···H(39A) ^{vii}	2.758
H(16)···H(39C)	3.507	H(29A)···H(9B)	3.600
H(16)···H(9A) ^{ix}	3.466	H(29A)···H(10) ^{vii}	2.863
H(16)···H(9C) ^{ix}	3.067	H(29B)···O(2) ^{vi}	3.152
H(16)···H(29B) ^{xiii}	3.241	H(29B)···O(10) ^{vii}	3.264
H(16)···H(29C) ^{xiii}	2.788	H(29B)···C(3) ^{vi}	3.600
H(17)···C(27) ^{ix}	3.393	H(29B)···C(4) ^{vi}	3.328
H(17)···C(35)	3.497	H(29B)···C(39) ^{vii}	3.326
H(17)···H(35)	3.577	H(29B)···H(5) ^{vii}	3.552
H(17)···H(27A) ^{ix}	2.649	H(29B)···H(6) ^{vii}	2.865
H(17)···H(27B) ^{ix}	3.298	H(29B)···H(15) ^{xiv}	3.171

H(17)···H(9C) ^{ix}	3.593	H(29B)···H(16) ^{xiv}	3.241
H(22)···O(2)	3.523	H(29B)···H(8B) ^{vi}	3.283
H(22)···C(4)	3.434	H(29B)···H(39A) ^{vii}	2.682
H(22)···C(40) ^{viii}	3.491	H(29B)···H(39B) ^{vii}	3.328
H(22)···H(8A)	3.464	H(29B)···H(10) ^{vii}	3.306
H(22)···H(20A) ^x	3.545	H(29C)···O(1) ^{vi}	2.975
H(22)···H(40A) ^{viii}	3.259	H(29C)···C(3) ^{vi}	3.371
H(22)···H(40B) ^{viii}	2.937	H(29C)···C(7) ^{vi}	3.327
H(25)···O(3) ^{vi}	3.241	H(29C)···C(15) ^{xiv}	3.119
H(25)···C(1) ^{vi}	3.353	H(29C)···C(16) ^{xiv}	3.267
H(25)···C(8) ^{vii}	3.128	H(29C)···C(36) ⁱ	3.553
H(25)···C(10) ^{vi}	3.501	H(29C)···H(15) ^{xiv}	2.486
H(25)···C(25) ^{vii}	3.522	H(29C)···H(16) ^{xiv}	2.788
H(25)···H(5) ^{vii}	3.151	H(29C)···H(36) ⁱ	3.017
H(25)···H(25) ^{vii}	3.456	H(29C)···H(7A) ^{vi}	2.753
H(25)···H(26) ^{vii}	3.597	H(29C)···H(19C) ^{xiv}	3.583
H(25)···H(10A) ^{vi}	3.284	H(29C)···H(39A) ^{vii}	3.441
H(25)···H(8A) ^{vii}	2.663	H(4)···O(8) ^v	2.966
H(25)···H(8B) ^{vii}	2.787	H(4)···O(11)	3.577
H(25)···H(9B) ^{vii}	3.509	H(4)···C(7) ^{iv}	3.507
H(26)···O(3) ^{vi}	3.030	H(4)···C(27) ^v	2.703
H(26)···O(6) ^{vi}	3.512	H(4)···H(37) ^{viii}	3.289
H(26)···C(9) ^{vii}	3.540	H(4)···H(7A) ^{iv}	3.169
H(26)···C(19) ^{vi}	3.547	H(4)···H(7B) ^{iv}	3.473
H(26)···C(28) ^{vii}	3.495	H(4)···H(7C) ^{iv}	3.309
H(26)···H(25) ^{vii}	3.597	H(4)···H(27A) ^v	3.485
H(26)···H(10A) ^{vi}	3.187	H(4)···H(27B) ^v	1.947
H(26)···H(8A) ^{vii}	3.542	H(4)···H(27C) ^v	3.016
H(26)···H(28B) ^{vii}	2.541	H(4)···H(11)	2.938
H(26)···H(19A) ^{vi}	3.512	H(10)···C(19) ^{vi}	3.212
H(26)···H(19B) ^{vi}	3.107	H(10)···C(29) ^{vii}	3.415
H(26)···H(9B) ^{vii}	2.788	H(10)···H(6)	3.168
H(26)···H(3) ^{vi}	3.300	H(10)···H(11A)	3.556
H(35)···C(9) ^{ix}	2.957	H(10)···H(28B) ^{vii}	3.176
H(35)···H(17)	3.577	H(10)···H(19B) ^{vi}	2.267
H(35)···H(19A) ^{xiii}	2.994	H(10)···H(29A) ^{vii}	2.863
H(35)···H(9A) ^{ix}	2.871	H(10)···H(29B) ^{vii}	3.306
H(35)···H(9B) ^{ix}	3.094	H(11)···O(4)	2.191
H(35)···H(9C) ^{ix}	2.441	H(11)···C(7) ^{iv}	3.543
H(36)···O(8) ^{ix}	2.694	H(11)···C(11)	3.596
H(36)···O(9) ^{ix}	2.851	H(11)···C(12)	2.800
H(36)···C(9) ^{ix}	3.436	H(11)···C(40) ^{viii}	3.170
H(36)···C(27) ^{ix}	3.422	H(11)···H(37) ^{viii}	3.558
H(36)···C(29) ^{ix}	3.494	H(11)···H(11A)	3.286
H(36)···H(7A) ^{xv}	3.243	H(11)···H(12B)	2.490
H(36)···H(27A) ^{ix}	3.413	H(11)···H(7B) ^{iv}	2.764
H(36)···H(27B) ^{ix}	3.452	H(11)···H(40A) ^{viii}	2.679
H(36)···H(9B) ^{ix}	3.232	H(11)···H(40B) ^{viii}	3.514

H(36)···H(9C) ^{ix}	2.777	H(11)···H(40C) ^{viii}	2.880
H(36)···H(29A) ^{ix}	3.341	H(11)···H(4)	2.938
C(3)—O(1)—C(7)	117.5 (2)	O(2)—C(8)—H(8B)	110.0
C(4)—O(2)—C(8)	117.0 (2)	C(9)—C(8)—H(8A)	110.0
C(11)—O(5)—C(13)	119.1 (2)	C(9)—C(8)—H(8B)	110.1
C(14)—O(6)—C(19)	117.8 (2)	H(8A)—C(8)—H(8B)	109.5
C(18)—O(7)—C(20)	117.9 (2)	C(8)—C(9)—H(9A)	109.4
C(23)—O(8)—C(27)	117.1 (2)	C(8)—C(9)—H(9B)	109.5
C(24)—O(9)—C(28)	116.8 (2)	C(8)—C(9)—H(9C)	109.4
C(31)—O(12)—C(33)	117.9 (2)	H(9A)—C(9)—H(9B)	109.5
C(34)—O(13)—C(39)	118.4 (2)	H(9A)—C(9)—H(9C)	109.5
C(38)—O(14)—C(40)	117.4 (2)	H(9B)—C(9)—H(9C)	109.5
C(2)—C(1)—C(6)	118.5 (2)	O(3)—C(10)—H(10A)	109.0
C(2)—C(1)—C(10)	120.4 (2)	C(1)—C(10)—H(10A)	109.0
C(6)—C(1)—C(10)	121.0 (2)	C(11)—C(10)—H(10A)	109.0
C(1)—C(2)—C(3)	121.1 (2)	O(5)—C(11)—H(11A)	110.3
O(1)—C(3)—C(2)	125.4 (2)	C(10)—C(11)—H(11A)	110.3
O(1)—C(3)—C(4)	114.6 (2)	C(12)—C(11)—H(11A)	110.2
C(2)—C(3)—C(4)	119.9 (2)	O(4)—C(12)—H(12A)	108.8
O(2)—C(4)—C(3)	115.9 (2)	O(4)—C(12)—H(12B)	107.6
O(2)—C(4)—C(5)	125.0 (2)	C(11)—C(12)—H(12A)	108.2
C(3)—C(4)—C(5)	119.1 (2)	C(11)—C(12)—H(12B)	108.3
C(4)—C(5)—C(6)	120.4 (2)	H(12A)—C(12)—H(12B)	109.5
C(1)—C(6)—C(5)	120.9 (2)	C(14)—C(15)—H(15)	120.1
O(2)—C(8)—C(9)	107.2 (2)	C(16)—C(15)—H(15)	120.2
O(3)—C(10)—C(1)	107.5 (2)	C(15)—C(16)—H(16)	119.6
O(3)—C(10)—C(11)	109.9 (2)	C(17)—C(16)—H(16)	119.7
C(1)—C(10)—C(11)	112.4 (2)	C(16)—C(17)—H(17)	120.0
O(5)—C(11)—C(10)	106.9 (2)	C(18)—C(17)—H(17)	120.2
O(5)—C(11)—C(12)	106.6 (2)	O(6)—C(19)—H(19A)	109.5
C(10)—C(11)—C(12)	112.5 (2)	O(6)—C(19)—H(19B)	109.4
O(4)—C(12)—C(11)	114.4 (2)	O(6)—C(19)—H(19C)	109.4
O(5)—C(13)—C(14)	119.8 (2)	H(19A)—C(19)—H(19B)	109.5
O(5)—C(13)—C(18)	121.0 (2)	H(19A)—C(19)—H(19C)	109.5
C(14)—C(13)—C(18)	118.8 (2)	H(19B)—C(19)—H(19C)	109.5
O(6)—C(14)—C(13)	116.2 (2)	O(7)—C(20)—H(20A)	109.5
O(6)—C(14)—C(15)	123.5 (2)	O(7)—C(20)—H(20B)	109.5
C(13)—C(14)—C(15)	120.3 (2)	O(7)—C(20)—H(20C)	109.4
C(14)—C(15)—C(16)	119.7 (3)	H(20A)—C(20)—H(20B)	109.5
C(15)—C(16)—C(17)	120.8 (2)	H(20A)—C(20)—H(20C)	109.5
C(16)—C(17)—C(18)	119.8 (2)	H(20B)—C(20)—H(20C)	109.5
O(7)—C(18)—C(13)	115.7 (2)	C(21)—C(22)—H(22)	119.5
O(7)—C(18)—C(17)	123.7 (2)	C(23)—C(22)—H(22)	119.6
C(13)—C(18)—C(17)	120.6 (3)	C(24)—C(25)—H(25)	120.0
C(22)—C(21)—C(26)	118.6 (2)	C(26)—C(25)—H(25)	119.9
C(22)—C(21)—C(30)	120.2 (2)	C(21)—C(26)—H(26)	119.4
C(26)—C(21)—C(30)	121.1 (2)	C(25)—C(26)—H(26)	119.5

C(21)—C(22)—C(23)	120.8 (2)	O(8)—C(27)—H(27A)	109.4
O(8)—C(23)—C(22)	125.2 (2)	O(8)—C(27)—H(27B)	109.6
O(8)—C(23)—C(24)	114.6 (2)	O(8)—C(27)—H(27C)	109.5
C(22)—C(23)—C(24)	120.1 (2)	H(27A)—C(27)—H(27B)	109.5
O(9)—C(24)—C(23)	116.0 (2)	H(27A)—C(27)—H(27C)	109.5
O(9)—C(24)—C(25)	124.8 (2)	H(27B)—C(27)—H(27C)	109.5
C(23)—C(24)—C(25)	119.2 (2)	O(9)—C(28)—H(28A)	110.1
C(24)—C(25)—C(26)	120.1 (2)	O(9)—C(28)—H(28B)	110.0
C(21)—C(26)—C(25)	121.1 (2)	C(29)—C(28)—H(28A)	110.2
O(9)—C(28)—C(29)	107.0 (2)	C(29)—C(28)—H(28B)	110.0
O(10)—C(30)—C(21)	108.3 (2)	H(28A)—C(28)—H(28B)	109.5
O(10)—C(30)—C(31)	109.2 (2)	C(28)—C(29)—H(29A)	109.6
C(21)—C(30)—C(31)	113.6 (2)	C(28)—C(29)—H(29B)	109.4
O(12)—C(31)—C(30)	104.7 (2)	C(28)—C(29)—H(29C)	109.5
O(12)—C(31)—C(32)	107.2 (2)	H(29A)—C(29)—H(29B)	109.5
C(30)—C(31)—C(32)	114.3 (2)	H(29A)—C(29)—H(29C)	109.5
O(11)—C(32)—C(31)	111.5 (2)	H(29B)—C(29)—H(29C)	109.5
O(12)—C(33)—C(34)	118.8 (2)	O(10)—C(30)—H(30)	108.6
O(12)—C(33)—C(38)	121.4 (2)	C(21)—C(30)—H(30)	108.5
C(34)—C(33)—C(38)	119.6 (2)	C(31)—C(30)—H(30)	108.5
O(13)—C(34)—C(33)	115.6 (2)	O(12)—C(31)—H(31)	110.2
O(13)—C(34)—C(35)	124.2 (3)	C(30)—C(31)—H(31)	110.2
C(33)—C(34)—C(35)	120.2 (2)	C(32)—C(31)—H(31)	110.2
C(34)—C(35)—C(36)	119.1 (3)	O(11)—C(32)—H(32A)	109.0
C(35)—C(36)—C(37)	121.7 (3)	O(11)—C(32)—H(32B)	109.0
C(36)—C(37)—C(38)	119.1 (3)	C(31)—C(32)—H(32A)	108.9
O(14)—C(38)—C(33)	114.3 (2)	C(31)—C(32)—H(32B)	108.9
O(14)—C(38)—C(37)	125.4 (3)	H(32A)—C(32)—H(32B)	109.5
C(33)—C(38)—C(37)	120.3 (3)	C(34)—C(35)—H(35)	120.5
C(10)—O(3)—H(3)	109.6	C(36)—C(35)—H(35)	120.4
C(12)—O(4)—H(4)	108.8	C(35)—C(36)—H(36)	119.2
C(30)—O(10)—H(10)	109.5	C(37)—C(36)—H(36)	119.1
C(32)—O(11)—H(11)	109.6	C(36)—C(37)—H(37)	120.4
C(1)—C(2)—H(2)	119.5	C(38)—C(37)—H(37)	120.5
C(3)—C(2)—H(2)	119.4	O(13)—C(39)—H(39A)	109.3
C(4)—C(5)—H(5)	119.8	O(13)—C(39)—H(39B)	109.6
C(6)—C(5)—H(5)	119.8	O(13)—C(39)—H(39C)	109.5
C(1)—C(6)—H(6)	119.5	H(39A)—C(39)—H(39B)	109.5
C(5)—C(6)—H(6)	119.5	H(39A)—C(39)—H(39C)	109.5
O(1)—C(7)—H(7A)	109.4	H(39B)—C(39)—H(39C)	109.5
O(1)—C(7)—H(7B)	109.5	O(14)—C(40)—H(40A)	109.4
O(1)—C(7)—H(7C)	109.5	O(14)—C(40)—H(40B)	109.6
H(7A)—C(7)—H(7B)	109.5	O(14)—C(40)—H(40C)	109.4
H(7A)—C(7)—H(7C)	109.5	H(40A)—C(40)—H(40B)	109.5
H(7B)—C(7)—H(7C)	109.5	H(40A)—C(40)—H(40C)	109.5
O(2)—C(8)—H(8A)	110.0	H(40B)—C(40)—H(40C)	109.5
C(7)—O(1)—C(3)—C(2)	−5.8 (4)	O(5)—C(13)—C(14)—C(15)	−174.1 (3)

C(7)—O(1)—C(3)—C(4)	172.3 (2)	O(5)—C(13)—C(18)—O(7)	-3.8 (4)
C(4)—O(2)—C(8)—C(9)	-179.9 (2)	O(5)—C(13)—C(18)—C(17)	174.8 (3)
C(8)—O(2)—C(4)—C(3)	-177.8 (2)	C(14)—C(13)—C(18)—O(7)	-176.3 (3)
C(8)—O(2)—C(4)—C(5)	2.3 (3)	C(14)—C(13)—C(18)—C(17)	2.2 (5)
C(11)—O(5)—C(13)—C(14)	-109.4 (3)	C(18)—C(13)—C(14)—O(6)	177.5 (2)
C(11)—O(5)—C(13)—C(18)	78.1 (3)	C(18)—C(13)—C(14)—C(15)	-1.4 (5)
C(13)—O(5)—C(11)—C(10)	107.7 (2)	O(6)—C(14)—C(15)—C(16)	-179.4 (3)
C(13)—O(5)—C(11)—C(12)	-131.8 (2)	C(13)—C(14)—C(15)—C(16)	-0.5 (5)
C(19)—O(6)—C(14)—C(13)	178.1 (2)	C(14)—C(15)—C(16)—C(17)	1.8 (5)
C(19)—O(6)—C(14)—C(15)	-3.0 (4)	C(15)—C(16)—C(17)—C(18)	-1.0 (5)
C(20)—O(7)—C(18)—C(13)	175.9 (3)	C(16)—C(17)—C(18)—O(7)	177.4 (3)
C(20)—O(7)—C(18)—C(17)	-2.7 (5)	C(16)—C(17)—C(18)—C(13)	-1.1 (5)
C(27)—O(8)—C(23)—C(22)	-7.1 (4)	C(22)—C(21)—C(26)—C(25)	-0.5 (4)
C(27)—O(8)—C(23)—C(24)	171.0 (2)	C(26)—C(21)—C(22)—C(23)	0.1 (3)
C(24)—O(9)—C(28)—C(29)	177.8 (2)	C(22)—C(21)—C(30)—O(10)	150.0 (2)
C(28)—O(9)—C(24)—C(23)	-175.0 (2)	C(22)—C(21)—C(30)—C(31)	-88.5 (3)
C(28)—O(9)—C(24)—C(25)	4.3 (3)	C(30)—C(21)—C(22)—C(23)	-177.6 (2)
C(31)—O(12)—C(33)—C(34)	-118.3 (3)	C(26)—C(21)—C(30)—O(10)	-27.7 (3)
C(31)—O(12)—C(33)—C(38)	66.7 (3)	C(26)—C(21)—C(30)—C(31)	93.8 (3)
C(33)—O(12)—C(31)—C(30)	115.3 (2)	C(30)—C(21)—C(26)—C(25)	177.2 (2)
C(33)—O(12)—C(31)—C(32)	-123.0 (2)	C(21)—C(22)—C(23)—O(8)	178.9 (2)
C(39)—O(13)—C(34)—C(33)	-175.5 (2)	C(21)—C(22)—C(23)—C(24)	0.9 (4)
C(39)—O(13)—C(34)—C(35)	4.6 (4)	O(8)—C(23)—C(24)—O(9)	-0.3 (3)
C(40)—O(14)—C(38)—C(33)	178.1 (3)	O(8)—C(23)—C(24)—C(25)	-179.7 (2)
C(40)—O(14)—C(38)—C(37)	0.8 (5)	C(22)—C(23)—C(24)—O(9)	177.8 (2)
C(2)—C(1)—C(6)—C(5)	0.6 (4)	C(22)—C(23)—C(24)—C(25)	-1.5 (4)
C(6)—C(1)—C(2)—C(3)	-1.4 (4)	O(9)—C(24)—C(25)—C(26)	-178.2 (2)
C(2)—C(1)—C(10)—O(3)	147.5 (2)	C(23)—C(24)—C(25)—C(26)	1.1 (4)
C(2)—C(1)—C(10)—C(11)	-91.4 (3)	C(24)—C(25)—C(26)—C(21)	-0.1 (3)
C(10)—C(1)—C(2)—C(3)	178.2 (2)	O(10)—C(30)—C(31)—O(12)	-60.8 (2)
C(6)—C(1)—C(10)—O(3)	-32.9 (3)	O(10)—C(30)—C(31)—C(32)	-177.7 (2)
C(6)—C(1)—C(10)—C(11)	88.2 (3)	C(21)—C(30)—C(31)—O(12)	178.2 (2)
C(10)—C(1)—C(6)—C(5)	-179.0 (2)	C(21)—C(30)—C(31)—C(32)	61.3 (3)
C(1)—C(2)—C(3)—O(1)	179.5 (2)	O(12)—C(31)—C(32)—O(11)	-57.1 (2)
C(1)—C(2)—C(3)—C(4)	1.5 (4)	C(30)—C(31)—C(32)—O(11)	58.4 (3)
O(1)—C(3)—C(4)—O(2)	1.0 (3)	O(12)—C(33)—C(34)—O(13)	4.8 (4)
O(1)—C(3)—C(4)—C(5)	-179.0 (2)	O(12)—C(33)—C(34)—C(35)	-175.3 (3)
C(2)—C(3)—C(4)—O(2)	179.2 (2)	O(12)—C(33)—C(38)—O(14)	-2.5 (4)
C(2)—C(3)—C(4)—C(5)	-0.9 (4)	O(12)—C(33)—C(38)—C(37)	175.0 (3)
O(2)—C(4)—C(5)—C(6)	-179.9 (2)	C(34)—C(33)—C(38)—O(14)	-177.5 (3)
C(3)—C(4)—C(5)—C(6)	0.1 (3)	C(34)—C(33)—C(38)—C(37)	0.0 (4)
C(4)—C(5)—C(6)—C(1)	0.0 (3)	C(38)—C(33)—C(34)—O(13)	180.0 (2)
O(3)—C(10)—C(11)—O(5)	-64.6 (2)	C(38)—C(33)—C(34)—C(35)	-0.2 (4)
O(3)—C(10)—C(11)—C(12)	178.7 (2)	O(13)—C(34)—C(35)—C(36)	179.7 (3)
C(1)—C(10)—C(11)—O(5)	175.7 (2)	C(33)—C(34)—C(35)—C(36)	-0.1 (4)
C(1)—C(10)—C(11)—C(12)	59.1 (3)	C(34)—C(35)—C(36)—C(37)	0.6 (5)
O(5)—C(11)—C(12)—O(4)	78.0 (3)	C(35)—C(36)—C(37)—C(38)	-0.7 (6)

C(10)—C(11)—C(12)—O(4)	-165.1 (2)	C(36)—C(37)—C(38)—O(14)	177.6 (3)
O(5)—C(13)—C(14)—O(6)	4.8 (4)	C(36)—C(37)—C(38)—C(33)	0.4 (5)

Symmetry codes: (i) $x, y, z-1$; (ii) $x-1, y, z$; (iii) $-x+1, -y, -z+1$; (iv) $x+1/2, -y+1/2, z+1/2$; (v) $x-1/2, -y+1/2, z+1/2$; (vi) $x+1, y, z$; (vii) $-x+2, -y, -z+1$; (viii) $x-1/2, -y+1/2, z-1/2$; (ix) $x, y, z+1$; (x) $x+1/2, -y+1/2, z-1/2$; (xi) $x-1, y, z-1$; (xii) $-x+1, -y, -z+2$; (xiii) $x-1, y, z+1$; (xiv) $x+1, y, z-1$; (xv) $x+1, y, z+1$.

Hydrogen-bond geometry (Å, °)

<i>D—H...A</i>	<i>D—H</i>	<i>H...A</i>	<i>D...A</i>	<i>D—H...A</i>
O3—H3...O6	0.82	2.09	2.772 (3)	141
O4—H4...O7	0.82	2.46	2.758 (3)	103
O10—H10...O13	0.82	2.17	2.878 (3)	145
O11—H11...O4	0.82	2.19	2.882 (3)	142
O3—H3...O5	0.82	2.44	2.859 (3)	113
O10—H10...O12	0.82	2.32	2.760 (3)	114
O11—H11...O12	0.82	2.36	2.795 (3)	114