

Acta Crystallographica Section E

Structure Reports

Online

ISSN 1600-5368

2-Methoxy-6-(6-methyl-1*H*-benzimidazol-2-yl)phenolHui-Quan Xiao,^a Ming-Zhu Zhang^b and Wei Wang^{c*}

^aDepartment of Chemistry, Shaoxing University, Shaoxing 312000, People's Republic of China, ^bCollege of Chemistry and Life Sciences, Zhejiang Normal University, Jinhua 321004, People's Republic of China, and ^cYancheng Institute of Technology, School of Chemical and Biological Engineering, Yancheng 224003, People's Republic of China

Correspondence e-mail: chemreagent@yahoo.cn

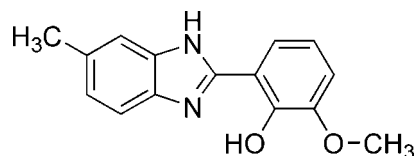
Received 17 April 2009; accepted 3 May 2009

Key indicators: single-crystal X-ray study; $T = 293$ K; mean $\sigma(\text{C}-\text{C}) = 0.004$ Å; disorder in main residue; R factor = 0.056; wR factor = 0.169; data-to-parameter ratio = 14.4.

The molecule of the title compound, $\text{C}_{15}\text{H}_{14}\text{N}_2\text{O}_2$ is almost planar, the dihedral angle between the 6-methyl-1*H*-benzimidazole plane and the 2-methoxyphenol plane being $6.9(2)^\circ$. An intramolecular $\text{O}-\text{H}\cdots\text{N}$ hydrogen bond is present. Adjacent molecules are linked by $\text{N}-\text{H}\cdots\text{O}$ hydrogen bonds into a three-dimensional network structure. The benzimidazole methyl group and its attached C atom are positionally disordered in a $0.724(4):0.276(4)$ ratio.

Related literature

For background to imidazole and its derivatives, see: Huang *et al.* (2004) and to benzimidazoles, see: Perry & Wilson (1993). For related structures, see: Savall & Fontimayor (2008).



Experimental

Crystal data

$\text{C}_{15}\text{H}_{14}\text{N}_2\text{O}_2$
 $M_r = 254.28$
 Monoclinic, $C2/c$
 $a = 17.986(3)$ Å
 $b = 11.4452(16)$ Å
 $c = 13.4105(19)$ Å
 $\beta = 104.216(2)^\circ$
 $V = 2676.1(7)$ Å³
 $Z = 8$
 Mo $K\alpha$ radiation
 $\mu = 0.09$ mm⁻¹
 $T = 293$ K
 $0.21 \times 0.17 \times 0.13$ mm

Data collection

Bruker APEXII CCD area-detector diffractometer
 Absorption correction: multi-scan (SADABS; Sheldrick, 2003)
 $T_{\min} = 0.982$, $T_{\max} = 0.989$
 6836 measured reflections
 2531 independent reflections
 1441 reflections with $I > 2\sigma(I)$
 $R_{\text{int}} = 0.031$

Refinement

$R[F^2 > 2\sigma(F^2)] = 0.056$
 $wR(F^2) = 0.169$
 $S = 1.05$
 2531 reflections
 176 parameters
 3 restraints
 H-atom parameters constrained
 $\Delta\rho_{\max} = 0.20$ e Å⁻³
 $\Delta\rho_{\min} = -0.23$ e Å⁻³

Table 1

Hydrogen-bond geometry (Å, °).

$D-\text{H}\cdots A$	$D-\text{H}$	$\text{H}\cdots A$	$D\cdots A$	$D-\text{H}\cdots A$
$\text{O1}-\text{H1}\cdots\text{N2}$	0.82	1.83	2.567(2)	148
$\text{N1}-\text{H1A}\cdots\text{O2}^i$	0.92	2.54	3.173(3)	127
$\text{N1}-\text{H1A}\cdots\text{O1}^i$	0.92	2.06	2.920(3)	155

Symmetry code: (i) $x, -y + 2, z + \frac{1}{2}$.

Data collection: APEX2 (Bruker, 2004); cell refinement: SAINT-Plus (Bruker, 2001); data reduction: SAINT-Plus; program(s) used to solve structure: SHELXS97 (Sheldrick, 2008); program(s) used to refine structure: SHELXL97 (Sheldrick, 2008); molecular graphics: SHELXTL (Sheldrick, 2008); software used to prepare material for publication: SHELXTL.

This work was supported by the Zhejiang Provincial Natural Science Foundation (grant No. Y4080395).

Supplementary data and figures for this paper are available from the IUCr electronic archives (Reference: HG2503).

References

- Bruker (2001). SAINT-Plus. Bruker AXS Inc., Madison, Wisconsin, USA.
 Bruker (2004). APEX2. Bruker AXS Inc., Madison, Wisconsin, USA.
 Huang, X.-C., Zhang, J.-P. & Chen, X.-M. (2004). *J. Am. Chem. Soc.* **126**, 13218–13219.
 Perry, R. J. & Wilson, B. D. (1993). *J. Org. Chem.* **58**, 7016–7021.
 Savall, B. M. & Fontimayor, J. R. (2008). *Tetrahedron Lett.* **49**, 6667–6669.
 Sheldrick, G. M. (2003). SADABS. University of Göttingen, Germany.
 Sheldrick, G. M. (2008). *Acta Cryst.* **A64**, 112–122.

supporting information

Acta Cryst. (2009). E65, o1256 [doi:10.1107/S1600536809016523]

2-Methoxy-6-(6-methyl-1*H*-benzimidazol-2-yl)phenol

Hui-Quan Xiao, Ming-Zhu Zhang and Wei Wang

S1. Comment

Imidazole and its derivatives are an important class of heterocycle with N-donor atoms, therefore they can be excellent organic ligands to generate various complexes (Huang *et al.*, 2004). Benzimidazoles are privileged structural units not only in the pharmaceutical industry but also in several other fields such as agricultural, electronic, and polymer chemistry (Perry *et al.*, 1993). We report here the synthesis and crystal structure of the title compound.

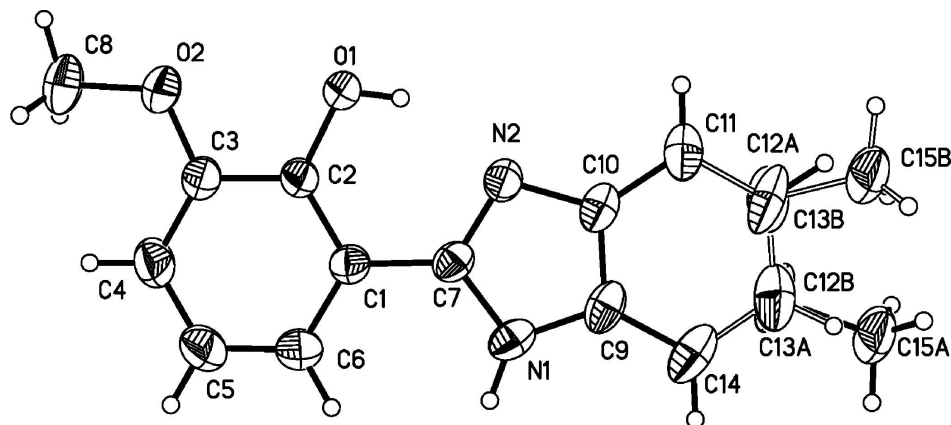
The molecular structure is shown in Fig. 1. The values of the geometric parameters in the compound are normal (Savall *et al.*, 2008) (Table 1). The benzimidazole and phenol groups are nearly coplanar, the dihedral angle between 6-methyl-1*H*-benzimidazole plane and 2-methoxyphenol plane is 6.9 (2)°. The compounds are linked by N—H···O hydrogen bonds [N1—H1A···O1, N1—H1A···O2, O1—H1···N2] into a three-dimensional network structure.

S2. Experimental

A mixture of 4-methylbenzene-1,2-diamine (1 mmol) and 2-hydroxy-3-methoxybenzaldehyde (1 mmol) in ethanol (15 ml) was stirred for 8 h and then filtered. The resulting clear orange solution was vapor at room temperature for 7 d, after which orange block-shaped crystals of the title complex suitable for X-ray diffraction analysis were obtained, yield 45%.

S3. Refinement

The H atoms were fixed geometrically and were treated as riding on their parent C atoms, with C—H distances in the range of 0.93–0.96 Å and with $U_{\text{iso}}(\text{H}) = 1.2U_{\text{eq}}(\text{parent atom})$, or $U_{\text{iso}}(\text{H}) = 1.5U_{\text{eq}}(\text{C}_{\text{methyl}})$. The coordinates of the H atoms of the N—H and O—H groups were found from difference Fourier maps and were allowed for as riding atoms with O—H 0.82 Å and N—H 0.92 Å and with $U_{\text{iso}}(\text{H}) = 1.2U_{\text{eq}}(\text{O})$.

**Figure 1**

The independent molecules of the title compound, showing 30% probability displacement ellipsoids and the atom-numbering scheme.

2-Methoxy-6-(6-methyl-1*H*-benzimidazol-2-yl)phenol

Crystal data

$C_{15}H_{14}N_2O_2$
 $M_r = 254.28$
 Monoclinic, $C2/c$
 Hall symbol: $-C\ 2yc$
 $a = 17.986\ (3)\ \text{\AA}$
 $b = 11.4452\ (16)\ \text{\AA}$
 $c = 13.4105\ (19)\ \text{\AA}$
 $\beta = 104.216\ (2)^\circ$
 $V = 2676.1\ (7)\ \text{\AA}^3$
 $Z = 8$

$F(000) = 1072$
 $D_x = 1.262\ \text{Mg m}^{-3}$
 Mo $K\alpha$ radiation, $\lambda = 0.71073\ \text{\AA}$
 Cell parameters from 2318 reflections
 $\theta = 2.4\text{--}23.9^\circ$
 $\mu = 0.09\ \text{mm}^{-1}$
 $T = 293\ \text{K}$
 Block, yellow
 $0.21 \times 0.17 \times 0.13\ \text{mm}$

Data collection

Bruker APEXII CCD area-detector
 diffractometer
 Radiation source: fine-focus sealed tube
 Graphite monochromator
 φ and ω scans
 Absorption correction: multi-scan
 (*SADABS*; Sheldrick, 2003)
 $T_{\min} = 0.982$, $T_{\max} = 0.989$

6836 measured reflections
 2531 independent reflections
 1441 reflections with $I > 2\sigma(I)$
 $R_{\text{int}} = 0.031$
 $\theta_{\max} = 25.7^\circ$, $\theta_{\min} = 2.1^\circ$
 $h = -21 \rightarrow 11$
 $k = -13 \rightarrow 13$
 $l = -15 \rightarrow 16$

Refinement

Refinement on F^2
 Least-squares matrix: full
 $R[F^2 > 2\sigma(F^2)] = 0.056$
 $wR(F^2) = 0.169$
 $S = 1.05$
 2531 reflections
 176 parameters
 3 restraints
 Primary atom site location: structure-invariant
 direct methods

Secondary atom site location: difference Fourier
 map
 Hydrogen site location: inferred from
 neighbouring sites
 H-atom parameters constrained
 $w = 1/[\sigma^2(F_o^2) + (0.0769P)^2 + 0.8329P]$
 where $P = (F_o^2 + 2F_c^2)/3$
 $(\Delta/\sigma)_{\max} < 0.001$
 $\Delta\rho_{\max} = 0.20\ \text{e \AA}^{-3}$
 $\Delta\rho_{\min} = -0.23\ \text{e \AA}^{-3}$

Special details

Geometry. All e.s.d.'s (except the e.s.d. in the dihedral angle between two l.s. planes) are estimated using the full covariance matrix. The cell e.s.d.'s are taken into account individually in the estimation of e.s.d.'s in distances, angles and torsion angles; correlations between e.s.d.'s in cell parameters are only used when they are defined by crystal symmetry. An approximate (isotropic) treatment of cell e.s.d.'s is used for estimating e.s.d.'s involving l.s. planes.

Refinement. Refinement of F^2 against ALL reflections. The weighted R -factor wR and goodness of fit S are based on F^2 , conventional R -factors R are based on F , with F set to zero for negative F^2 . The threshold expression of $F^2 > \sigma(F^2)$ is used only for calculating R -factors(gt) *etc.* and is not relevant to the choice of reflections for refinement. R -factors based on F^2 are statistically about twice as large as those based on F , and R -factors based on ALL data will be even larger.

Fractional atomic coordinates and isotropic or equivalent isotropic displacement parameters (\AA^2)

	<i>x</i>	<i>y</i>	<i>z</i>	$U_{\text{iso}}^*/U_{\text{eq}}$	Occ. (<1)
O1	0.34998 (10)	0.96117 (16)	0.14576 (12)	0.0718 (6)	
H1	0.3809	0.9222	0.1879	0.086*	
O2	0.23740 (12)	1.0753 (2)	0.03072 (14)	0.0942 (7)	
N1	0.39603 (12)	0.94335 (19)	0.46813 (14)	0.0644 (6)	
H1A	0.3689	0.9806	0.5087	0.077*	
N2	0.42667 (11)	0.89053 (17)	0.32288 (14)	0.0568 (5)	
C1	0.31924 (14)	1.0273 (2)	0.30233 (18)	0.0568 (6)	
C2	0.30615 (14)	1.0242 (2)	0.19534 (18)	0.0574 (6)	
C3	0.24529 (16)	1.0877 (2)	0.1342 (2)	0.0691 (8)	
C4	0.20037 (17)	1.1559 (3)	0.1795 (2)	0.0839 (9)	
H4	0.1605	1.1992	0.1389	0.101*	
C5	0.21404 (19)	1.1607 (3)	0.2856 (3)	0.0928 (10)	
H5	0.1834	1.2075	0.3158	0.111*	
C6	0.27225 (17)	1.0974 (3)	0.3463 (2)	0.0797 (9)	
H6	0.2807	1.1009	0.4175	0.096*	
C7	0.38041 (14)	0.9559 (2)	0.36368 (17)	0.0554 (6)	
C8	0.1738 (2)	1.1332 (4)	-0.0374 (3)	0.1217 (14)	
H8A	0.1748	1.1176	-0.1074	0.183*	
H8B	0.1776	1.2158	-0.0251	0.183*	
H8C	0.1266	1.1047	-0.0252	0.183*	
C9	0.45596 (15)	0.8650 (2)	0.49645 (19)	0.0659 (7)	
C10	0.47445 (14)	0.8322 (2)	0.40546 (19)	0.0618 (7)	
C11	0.53215 (16)	0.7501 (3)	0.4079 (2)	0.0806 (9)	
H11	0.5454	0.7270	0.3480	0.097*	
C14	0.49349 (18)	0.8175 (3)	0.5915 (2)	0.0865 (10)	
H14	0.4807	0.8398	0.6519	0.104*	
C12A	0.56835 (19)	0.7052 (3)	0.5008 (3)	0.1024 (16)	0.724 (4)
H12A	0.6072	0.6509	0.5033	0.123*	0.724 (4)
C13A	0.55061 (19)	0.7359 (3)	0.5920 (3)	0.0988 (17)	0.724 (4)
C15A	0.5957 (3)	0.6706 (5)	0.6876 (3)	0.1041 (15)	0.724 (4)
H15A	0.5797	0.6974	0.7469	0.156*	0.724 (4)
H15B	0.6495	0.6854	0.6969	0.156*	0.724 (4)
H15C	0.5861	0.5883	0.6788	0.156*	0.724 (4)
C13B	0.56835 (19)	0.7052 (3)	0.5008 (3)	0.0988 (17)	0.276 (4)
C12B	0.55061 (19)	0.7359 (3)	0.5920 (3)	0.1024 (16)	0.276 (4)

H12B	0.5769	0.7018	0.6536	0.123*	0.276 (4)
C15B	0.6306 (6)	0.6287 (11)	0.5397 (9)	0.1041 (15)	0.276 (4)
H15G	0.6498	0.5992	0.4838	0.156*	0.276 (4)
H15D	0.6136	0.5648	0.5748	0.156*	0.276 (4)
H15E	0.6707	0.6703	0.5868	0.156*	0.276 (4)

Atomic displacement parameters (Å²)

	U^{11}	U^{22}	U^{33}	U^{12}	U^{13}	U^{23}
O1	0.0768 (12)	0.0922 (13)	0.0482 (10)	0.0351 (10)	0.0186 (9)	0.0116 (9)
O2	0.0935 (15)	0.1259 (18)	0.0566 (12)	0.0478 (13)	0.0059 (10)	0.0170 (11)
N1	0.0690 (14)	0.0807 (15)	0.0447 (12)	-0.0114 (12)	0.0164 (10)	0.0033 (11)
N2	0.0514 (12)	0.0654 (13)	0.0528 (12)	0.0031 (10)	0.0112 (10)	0.0091 (10)
C1	0.0562 (15)	0.0652 (15)	0.0518 (14)	0.0051 (13)	0.0186 (12)	0.0053 (12)
C2	0.0553 (14)	0.0654 (15)	0.0550 (15)	0.0130 (13)	0.0205 (12)	0.0091 (12)
C3	0.0693 (17)	0.0807 (19)	0.0588 (16)	0.0191 (15)	0.0185 (14)	0.0146 (14)
C4	0.0738 (19)	0.094 (2)	0.088 (2)	0.0316 (17)	0.0277 (17)	0.0206 (17)
C5	0.097 (2)	0.103 (2)	0.091 (2)	0.038 (2)	0.046 (2)	0.0105 (19)
C6	0.090 (2)	0.094 (2)	0.0645 (17)	0.0202 (18)	0.0352 (16)	0.0058 (15)
C7	0.0560 (14)	0.0641 (15)	0.0473 (14)	-0.0055 (13)	0.0147 (12)	0.0061 (11)
C8	0.116 (3)	0.151 (3)	0.080 (2)	0.059 (3)	-0.010 (2)	0.031 (2)
C9	0.0529 (15)	0.0782 (18)	0.0590 (16)	-0.0160 (14)	-0.0009 (13)	0.0180 (13)
C10	0.0528 (15)	0.0712 (17)	0.0565 (16)	-0.0081 (13)	0.0042 (12)	0.0166 (13)
C11	0.0611 (17)	0.086 (2)	0.087 (2)	0.0102 (16)	0.0036 (15)	0.0235 (16)
C14	0.079 (2)	0.112 (2)	0.0576 (17)	-0.0321 (19)	-0.0033 (15)	0.0269 (16)
C12A	0.080 (4)	0.103 (4)	0.116 (3)	0.015 (3)	0.006 (3)	0.042 (3)
C13A	0.070 (3)	0.129 (5)	0.077 (2)	-0.016 (4)	-0.020 (2)	0.055 (3)
C15A	0.101 (3)	0.131 (4)	0.072 (3)	0.028 (3)	0.005 (2)	0.034 (2)
C13B	0.070 (3)	0.129 (5)	0.077 (2)	-0.016 (4)	-0.020 (2)	0.055 (3)
C12B	0.080 (4)	0.103 (4)	0.116 (3)	0.015 (3)	0.006 (3)	0.042 (3)
C15B	0.101 (3)	0.131 (4)	0.072 (3)	0.028 (3)	0.005 (2)	0.034 (2)

Geometric parameters (Å, °)

O1—C2	1.357 (3)	C8—H8A	0.9600
O1—H1	0.8200	C8—H8B	0.9600
O2—C3	1.367 (3)	C8—H8C	0.9600
O2—C8	1.438 (3)	C9—C10	1.393 (4)
N1—C7	1.367 (3)	C9—C14	1.397 (3)
N1—C9	1.382 (3)	C10—C11	1.394 (4)
N1—H1A	0.9194	C11—C12A	1.357 (4)
N2—C7	1.332 (3)	C11—H11	0.9300
N2—C10	1.394 (3)	C14—C13A	1.388 (5)
C1—C2	1.396 (3)	C14—H14	0.9300
C1—C6	1.397 (4)	C12A—C13A	1.383 (5)
C1—C7	1.453 (3)	C12A—H12A	0.9300
C2—C3	1.399 (3)	C13A—C15A	1.531 (4)
C3—C4	1.368 (4)	C15A—H15A	0.9600

C4—C5	1.384 (4)	C15A—H15B	0.9600
C4—H4	0.9300	C15A—H15C	0.9600
C5—C6	1.366 (4)	C15B—H15G	0.9600
C5—H5	0.9300	C15B—H15D	0.9600
C6—H6	0.9300	C15B—H15E	0.9600
C2—O1—H1	109.2	O2—C8—H8C	109.5
C3—O2—C8	117.7 (2)	H8A—C8—H8C	109.5
C7—N1—C9	107.4 (2)	H8B—C8—H8C	109.5
C7—N1—H1A	123.5	N1—C9—C10	105.8 (2)
C9—N1—H1A	129.0	N1—C9—C14	132.3 (3)
C7—N2—C10	105.6 (2)	C10—C9—C14	121.9 (3)
C2—C1—C6	118.8 (2)	C9—C10—C11	119.8 (2)
C2—C1—C7	118.8 (2)	C9—C10—N2	109.5 (2)
C6—C1—C7	122.5 (2)	C11—C10—N2	130.7 (3)
O1—C2—C1	123.0 (2)	C12A—C11—C10	117.6 (3)
O1—C2—C3	117.0 (2)	C12A—C11—H11	121.2
C1—C2—C3	120.0 (2)	C10—C11—H11	121.2
O2—C3—C4	125.8 (2)	C13A—C14—C9	117.3 (3)
O2—C3—C2	114.3 (2)	C13A—C14—H14	121.4
C4—C3—C2	119.9 (2)	C9—C14—H14	121.4
C3—C4—C5	120.3 (3)	C11—C12A—C13A	123.6 (3)
C3—C4—H4	119.9	C11—C12A—H12A	118.2
C5—C4—H4	119.9	C13A—C12A—H12A	118.2
C6—C5—C4	120.5 (3)	C12A—C13A—C14	119.8 (3)
C6—C5—H5	119.7	C12A—C13A—C15A	115.3 (4)
C4—C5—H5	119.7	C14—C13A—C15A	124.9 (4)
C5—C6—C1	120.6 (3)	C13A—C15A—H15A	109.5
C5—C6—H6	119.7	C13A—C15A—H15B	109.5
C1—C6—H6	119.7	H15A—C15A—H15B	109.5
N2—C7—N1	111.7 (2)	C13A—C15A—H15C	109.5
N2—C7—C1	123.1 (2)	H15A—C15A—H15C	109.5
N1—C7—C1	125.2 (2)	H15B—C15A—H15C	109.5
O2—C8—H8A	109.5	H15G—C15B—H15D	109.5
O2—C8—H8B	109.5	H15G—C15B—H15E	109.5
H8A—C8—H8B	109.5	H15D—C15B—H15E	109.5

Hydrogen-bond geometry (Å, °)

<i>D</i> —H \cdots <i>A</i>	<i>D</i> —H	H \cdots <i>A</i>	<i>D</i> \cdots <i>A</i>	<i>D</i> —H \cdots <i>A</i>
O1—H1 \cdots N2	0.82	1.83	2.567 (2)	148
N1—H1A \cdots O2 ⁱ	0.92	2.54	3.173 (3)	127
N1—H1A \cdots O1 ⁱ	0.92	2.06	2.920 (3)	155

Symmetry code: (i) *x*, $-y+2$, $z+1/2$.