

Acta Crystallographica Section E

Structure Reports

Online

ISSN 1600-5368

3-[3-(2-Pyridyl)-1H-pyrazol-1-yl]propanamide

Feng Huang, Bin Jin and Jian-Feng Zhang*

State Key Laboratory Base of Novel Functional Materials and Preparation Science, Faculty of Materials Science and Chemical Engineering, Ningbo University, Ningbo, Zhejiang 315211, People's Republic of China

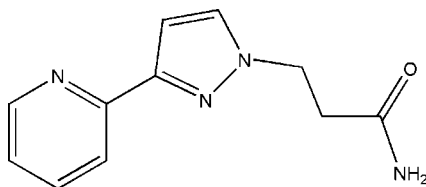
Correspondence e-mail: zjf@nbu.edu.cn

Received 8 May 2009; accepted 20 May 2009

 Key indicators: single-crystal X-ray study; $T = 293$ K; mean $\sigma(\text{C}-\text{C}) = 0.002$ Å; R factor = 0.045; wR factor = 0.139; data-to-parameter ratio = 16.5.

In the title compound, $\text{C}_{11}\text{H}_{12}\text{N}_4\text{O}$, the pyrazole and pyridine rings are nearly coplanar [dihedral angle = $1.87(5)^\circ$]. Adjacent molecules are linked by $\text{N}-\text{H}\cdots\text{N}$ and $\text{N}-\text{H}\cdots\text{O}$ hydrogen bonds into a linear chain running along the c axis.

Related literature

 For the chemistry of 3-(2-pyridyl)pyrazoles, see: Ruben *et al.* (2004); Steel (2005).


Experimental

Crystal data

$\text{C}_{11}\text{H}_{12}\text{N}_4\text{O}$
 $M_r = 216.25$
 Triclinic, $P\bar{1}$
 $a = 7.7446(15)$ Å
 $b = 8.3517(17)$ Å
 $c = 8.4804(17)$ Å
 $\alpha = 97.99(3)^\circ$
 $\beta = 98.95(3)^\circ$

$\gamma = 90.40(3)^\circ$
 $V = 536.4(2)$ Å³
 $Z = 2$
 Mo $K\alpha$ radiation
 $\mu = 0.09$ mm⁻¹
 $T = 293$ K
 $0.58 \times 0.55 \times 0.27$ mm

Data collection

Rigaku R-Axis RAPID
 diffractometer
 Absorption correction: multi-scan
 (ABSCOR; Higashi, 1995)
 $T_{\min} = 0.947$, $T_{\max} = 0.972$

5019 measured reflections
 2410 independent reflections
 1937 reflections with $I > 2\sigma(I)$
 $R_{\text{int}} = 0.029$

Refinement

$R[F^2 > 2\sigma(F^2)] = 0.045$
 $wR(F^2) = 0.139$
 $S = 1.12$
 2410 reflections

146 parameters
 H-atom parameters constrained
 $\Delta\rho_{\max} = 0.37$ e Å⁻³
 $\Delta\rho_{\min} = -0.28$ e Å⁻³

Table 1

Hydrogen-bond geometry (Å, °).

$D-H\cdots A$	$D-H$	$H\cdots A$	$D\cdots A$	$D-H\cdots A$
$\text{N1}-\text{H1A}\cdots\text{O1}^i$	0.86	2.11	2.968 (2)	175
$\text{N1}-\text{H1B}\cdots\text{N4}^{ii}$	0.86	2.21	3.055 (2)	167

 Symmetry codes: (i) $-x + 1, -y + 1, -z + 1$; (ii) $x, y, z - 1$.

Data collection: *RAPID-AUTO* (Rigaku, 1998); cell refinement: *RAPID-AUTO*; data reduction: *CrystalStructure* (Rigaku/MS, 2004); program(s) used to solve structure: *SHELXS97* (Sheldrick, 2008); program(s) used to refine structure: *SHELXL97* (Sheldrick, 2008); molecular graphics: *SHELXTL* (Sheldrick, 2008); software used to prepare material for publication: *SHELXL97*.

This project was sponsored by the K. C. Wong Magna Fund of Ningbo University, and supported by the Project of Zhejiang Province Science and Technology Program (grant No. 2008 C21043) and Programs of the Ningbo Natural Science Foundation (grant No.2007 A610053). We thank Ms H.-L. Zhu and Y. Zhou for their help with the structure analysis and Mr W. Xu for the data collection.

Supplementary data and figures for this paper are available from the IUCr electronic archives (Reference: NG2581).

References

- Higashi, T. (1995). *ABSCOR*. Rigaku Corporation, Tokyo, Japan.
 Rigaku (1998). *RAPID-AUTO*. Rigaku Corporation, Tokyo, Japan.
 Rigaku/MS (2004). *CrystalStructure*. Rigaku/MS Inc., The Woodlands, Texas, USA.
 Ruben, M., Rojo, J., Romero-Salguero, F. J., Uppadine, L. H. & Lehn, J. M. (2004). *Angew. Chem. Int. Ed.* **43**, 3644–3662.
 Sheldrick, G. M. (2008). *Acta Cryst.* **A64**, 112–122.
 Steel, P. J. (2005). *Acc. Chem. Res.* **38**, 243–250.

supporting information

Acta Cryst. (2009). E65, o1411 [doi:10.1107/S1600536809019060]

3-[3-(2-Pyridyl)-1*H*-pyrazol-1-yl]propanamide**Feng Huang, Bin Jin and Jian-Feng Zhang****S1. Comment**

Great attention has been paid to 3-(2-pyridyl)pyrazole-based ligands in the area of coordination chemistry, not only due to they can act as bridging or chelate ligands and their intriguing structures, but also for their potential applications as functional materials (Ruben *et al.*, 2004; Steel *et al.*, 2005). Herein, We report the structure of a *N*-Pyrazolylpropanamide ligand, C₁₁H₁₂N₄O (Scheme 1).

As is shown in Figure 1, in the title compound, the dihedral angle between pyrazole and pyridine ring is 1.87 (5)°, and the torsion angle of N3—C6—C7—N4 is 179.36 (2)°. The molecules are formed into a three-dimensional supermolecular network through intermolecular weak N—H···N (N···N= 3.055 (2) Å) and N—H···O (N···O= 2.968 (2) Å) hydrogen bonds (Figure 2). The hydrogen bond geometry parameters are list in Table 1. Weak π - π stacking interactions between pyrazole ring (N2/N3/C6/C5/C4) and pyridine ring (N4/C7/C8/C9/C10/C11) (symmetric code: -x, -y, 2 - z), with a centroid-to-centroid distance of 3.828 (1)Å and interplanar distance of 3.739 (1) Å, help to stabilize the crystal structure.

S2. Experimental

A mixture of 3-(2-pyridyl)pyrazole (2.9 g, 20 mmol), sodium hydroxide (0.16 g, 4 mmol), *N,N'*-dimethylformamide-(DMF)(100 ml) was stirred and heated to 373 K. A solution of acrylamide (1.44 g, 20 mmol) solubilized in DMF(10 ml) was added dropwise over a period of 10 minutes. After 7 h, heating was then terminated, and the solution was cooled to room temperature. The mixture was filtered, and DMF was removed by vacuum distillation. The product was then recrystallized from ethanol (yield: 64.7%; mp: 427 K). Calculated for C₁₁H₁₂N₄O: C 61.10, H 5.59, N 25.91%; found: C 60.03, H 5.48, N 25.86%.

S3. Refinement

H atoms bound to C and N atoms were positioned geometrically and treated in the subsequent refinement as riding atoms, with C—H = 0.93 (aromatic) or 0.97 Å (methylene) and N—H = 0.86 Å, and with $U_{\text{iso}}(\text{H}) = 1.2 U_{\text{eq}}(\text{C}, \text{N})$.

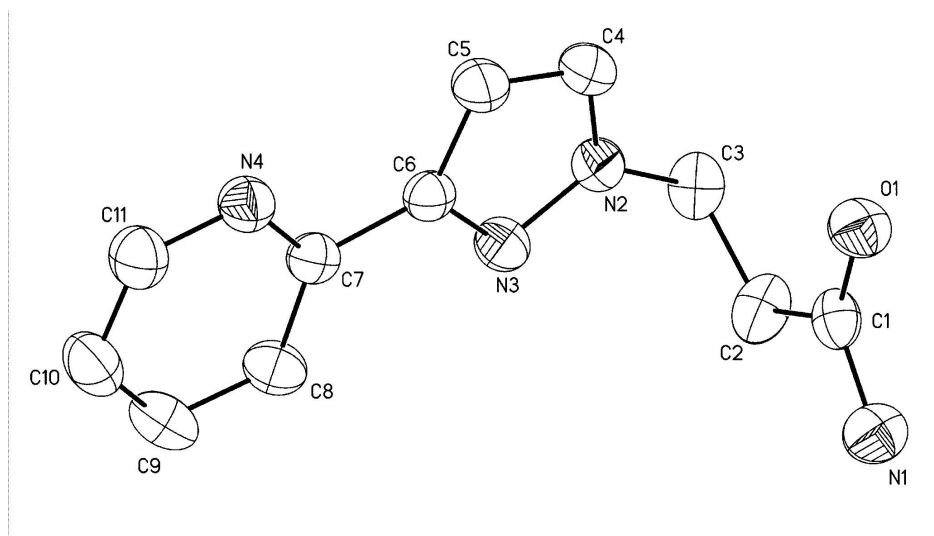


Figure 1

The molecular structure of the title compound. Displacement ellipsoids are drawn at the 45% probability level.

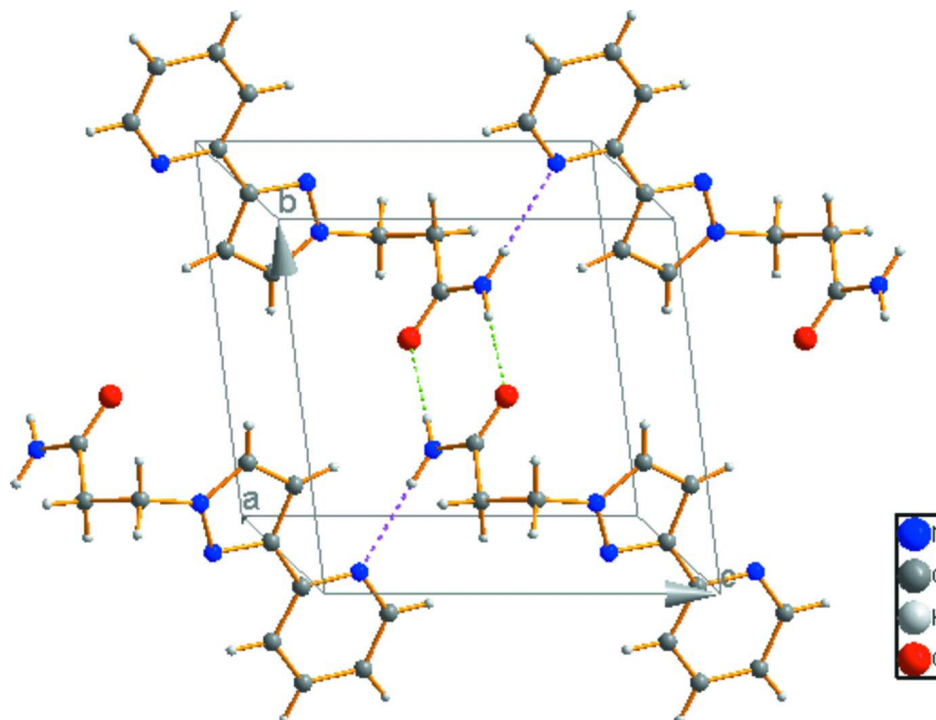


Figure 2

Partial packing view of the title compound. Dashed lines indicate N—H...N and N—H...O hydrogen bonds.

3-[3-(2-Pyridyl)-1H-pyrazol-1-yl]propanamide

Crystal data

$C_{11}H_{12}N_4O$
 $M_r = 216.25$
 Triclinic, $P\bar{1}$

Hall symbol: $-P\ 1$
 $a = 7.7446\ (15)\ \text{\AA}$
 $b = 8.3517\ (17)\ \text{\AA}$

$c = 8.4804 (17) \text{ \AA}$
 $\alpha = 97.99 (3)^\circ$
 $\beta = 98.95 (3)^\circ$
 $\gamma = 90.40 (3)^\circ$
 $V = 536.4 (2) \text{ \AA}^3$
 $Z = 2$
 $F(000) = 228$
 $D_x = 1.339 \text{ Mg m}^{-3}$

Mo $K\alpha$ radiation, $\lambda = 0.71073 \text{ \AA}$
 Cell parameters from 5019 reflections
 $\theta = 3.2\text{--}27.4^\circ$
 $\mu = 0.09 \text{ mm}^{-1}$
 $T = 293 \text{ K}$
 Block, colorless
 $0.58 \times 0.55 \times 0.27 \text{ mm}$

Data collection

Rigaku R-AXIS RAPID
 diffractometer
 Radiation source: fine-focus sealed tube
 Graphite monochromator
 Detector resolution: 0 pixels mm^{-1}
 ω scans
 Absorption correction: multi-scan
 (ABSCOR; Higashi, 1995)
 $T_{\min} = 0.947$, $T_{\max} = 0.972$

5019 measured reflections
 2410 independent reflections
 1937 reflections with $I > 2\sigma(I)$
 $R_{\text{int}} = 0.029$
 $\theta_{\max} = 27.4^\circ$, $\theta_{\min} = 3.2^\circ$
 $h = -9 \rightarrow 9$
 $k = -10 \rightarrow 10$
 $l = -10 \rightarrow 10$

Refinement

Refinement on F^2
 Least-squares matrix: full
 $R[F^2 > 2\sigma(F^2)] = 0.045$
 $wR(F^2) = 0.139$
 $S = 1.12$
 2410 reflections
 146 parameters
 0 restraints
 Primary atom site location: structure-invariant
 direct methods
 Secondary atom site location: difference Fourier
 map

Hydrogen site location: inferred from
 neighbouring sites
 H-atom parameters constrained
 $w = 1/[\sigma^2(F_o^2) + (0.0807P)^2 + 0.0265P]$
 where $P = (F_o^2 + 2F_c^2)/3$
 $(\Delta/\sigma)_{\max} < 0.001$
 $\Delta\rho_{\max} = 0.37 \text{ e \AA}^{-3}$
 $\Delta\rho_{\min} = -0.28 \text{ e \AA}^{-3}$
 Extinction correction: SHELXL97 (Sheldrick,
 2008), $F_c^* = kFc[1 + 0.001xFe^2\lambda^3/\sin(2\theta)]^{-1/4}$
 Extinction coefficient: 0.038 (11)

Special details

Geometry. All e.s.d.'s (except the e.s.d. in the dihedral angle between two l.s. planes) are estimated using the full covariance matrix. The cell e.s.d.'s are taken into account individually in the estimation of e.s.d.'s in distances, angles and torsion angles; correlations between e.s.d.'s in cell parameters are only used when they are defined by crystal symmetry. An approximate (isotropic) treatment of cell e.s.d.'s is used for estimating e.s.d.'s involving l.s. planes.

Refinement. Refinement of F^2 against ALL reflections. The weighted R -factor wR and goodness of fit S are based on F^2 , conventional R -factors R are based on F , with F set to zero for negative F^2 . The threshold expression of $F^2 > \sigma(F^2)$ is used only for calculating R -factors(gt) etc. and is not relevant to the choice of reflections for refinement. R -factors based on F^2 are statistically about twice as large as those based on F , and R -factors based on ALL data will be even larger.

Fractional atomic coordinates and isotropic or equivalent isotropic displacement parameters (\AA^2)

	x	y	z	$U_{\text{iso}}^*/U_{\text{eq}}$
N1	0.41230 (16)	0.30020 (14)	0.39463 (14)	0.0502 (3)
H1A	0.5037	0.3623	0.4058	0.060*
H1B	0.4039	0.2110	0.3293	0.060*
O1	0.28772 (12)	0.46829 (11)	0.57395 (12)	0.0495 (3)
C1	0.28366 (17)	0.34222 (15)	0.47849 (14)	0.0391 (3)
C2	0.13022 (19)	0.22241 (18)	0.44677 (16)	0.0509 (4)
H2A	0.0683	0.2257	0.3387	0.061*

H2B	0.1748	0.1145	0.4503	0.061*
C3	0.00195 (18)	0.25207 (18)	0.56416 (17)	0.0477 (4)
H3A	-0.0373	0.3623	0.5664	0.057*
H3B	-0.0994	0.1801	0.5266	0.057*
N2	0.07610 (14)	0.22676 (13)	0.72718 (13)	0.0403 (3)
C4	0.0879 (2)	0.33312 (17)	0.86282 (18)	0.0500 (4)
H4A	0.0518	0.4395	0.8703	0.060*
C5	0.1622 (2)	0.25694 (17)	0.98736 (17)	0.0496 (4)
H5A	0.1874	0.2996	1.0959	0.060*
C6	0.19232 (15)	0.09985 (15)	0.91577 (15)	0.0367 (3)
N3	0.13956 (14)	0.08220 (13)	0.75618 (13)	0.0401 (3)
C7	0.26942 (15)	-0.03550 (14)	0.99317 (15)	0.0368 (3)
C8	0.28816 (18)	-0.18581 (16)	0.90392 (18)	0.0457 (3)
H8A	0.2547	-0.2021	0.7926	0.055*
C9	0.3569 (2)	-0.30988 (17)	0.9829 (2)	0.0555 (4)
H9A	0.3706	-0.4110	0.9253	0.067*
C10	0.4054 (2)	-0.28298 (19)	1.1479 (2)	0.0576 (4)
H10A	0.4498	-0.3655	1.2041	0.069*
C11	0.3862 (2)	-0.13031 (19)	1.22693 (19)	0.0538 (4)
H11A	0.4210	-0.1116	1.3381	0.065*
N4	0.32045 (15)	-0.00708 (14)	1.15354 (14)	0.0451 (3)

Atomic displacement parameters (Å²)

	U^{11}	U^{22}	U^{33}	U^{12}	U^{13}	U^{23}
N1	0.0535 (7)	0.0437 (6)	0.0500 (7)	-0.0114 (5)	0.0099 (5)	-0.0069 (5)
O1	0.0528 (6)	0.0395 (5)	0.0531 (6)	-0.0070 (4)	0.0085 (5)	-0.0038 (4)
C1	0.0461 (7)	0.0361 (6)	0.0327 (6)	-0.0044 (5)	-0.0025 (5)	0.0070 (5)
C2	0.0590 (9)	0.0539 (8)	0.0366 (7)	-0.0193 (7)	0.0031 (6)	0.0012 (6)
C3	0.0437 (7)	0.0515 (8)	0.0466 (8)	-0.0067 (6)	-0.0011 (6)	0.0121 (6)
N2	0.0428 (6)	0.0378 (6)	0.0409 (6)	0.0012 (4)	0.0078 (4)	0.0057 (4)
C4	0.0662 (9)	0.0374 (7)	0.0486 (8)	0.0102 (6)	0.0171 (7)	0.0040 (6)
C5	0.0715 (9)	0.0410 (7)	0.0364 (7)	0.0097 (6)	0.0124 (6)	0.0007 (5)
C6	0.0361 (6)	0.0354 (6)	0.0389 (7)	-0.0020 (5)	0.0092 (5)	0.0028 (5)
N3	0.0408 (6)	0.0356 (5)	0.0421 (6)	-0.0008 (4)	0.0037 (4)	0.0019 (4)
C7	0.0326 (6)	0.0358 (6)	0.0418 (7)	-0.0022 (5)	0.0071 (5)	0.0031 (5)
C8	0.0439 (7)	0.0412 (7)	0.0479 (8)	0.0025 (5)	0.0031 (6)	-0.0025 (6)
C9	0.0539 (8)	0.0384 (7)	0.0704 (10)	0.0086 (6)	0.0045 (7)	-0.0001 (7)
C10	0.0580 (9)	0.0467 (8)	0.0698 (11)	0.0122 (7)	0.0072 (7)	0.0175 (7)
C11	0.0603 (9)	0.0545 (8)	0.0469 (8)	0.0079 (7)	0.0048 (6)	0.0120 (7)
N4	0.0515 (7)	0.0417 (6)	0.0417 (6)	0.0033 (5)	0.0072 (5)	0.0041 (5)

Geometric parameters (Å, °)

N1—C1	1.3332 (18)	C5—C6	1.4040 (18)
N1—H1A	0.8600	C5—H5A	0.9300
N1—H1B	0.8600	C6—N3	1.3386 (16)
O1—C1	1.2328 (16)	C6—C7	1.4693 (18)

C1—C2	1.5150 (18)	C7—N4	1.3431 (18)
C2—C3	1.511 (2)	C7—C8	1.3938 (19)
C2—H2A	0.9700	C8—C9	1.377 (2)
C2—H2B	0.9700	C8—H8A	0.9300
C3—N2	1.4566 (18)	C9—C10	1.378 (2)
C3—H3A	0.9700	C9—H9A	0.9300
C3—H3B	0.9700	C10—C11	1.376 (2)
N2—C4	1.3427 (19)	C10—H10A	0.9300
N2—N3	1.3464 (16)	C11—N4	1.3389 (19)
C4—C5	1.362 (2)	C11—H11A	0.9300
C4—H4A	0.9300		
C1—N1—H1A	120.0	C4—C5—C6	104.82 (13)
C1—N1—H1B	120.0	C4—C5—H5A	127.6
H1A—N1—H1B	120.0	C6—C5—H5A	127.6
O1—C1—N1	123.19 (12)	N3—C6—C5	110.81 (12)
O1—C1—C2	122.26 (12)	N3—C6—C7	120.56 (11)
N1—C1—C2	114.55 (11)	C5—C6—C7	128.63 (12)
C3—C2—C1	114.53 (11)	C6—N3—N2	104.84 (10)
C3—C2—H2A	108.6	N4—C7—C8	121.89 (13)
C1—C2—H2A	108.6	N4—C7—C6	116.74 (11)
C3—C2—H2B	108.6	C8—C7—C6	121.38 (12)
C1—C2—H2B	108.6	C9—C8—C7	119.08 (14)
H2A—C2—H2B	107.6	C9—C8—H8A	120.5
N2—C3—C2	112.93 (12)	C7—C8—H8A	120.5
N2—C3—H3A	109.0	C8—C9—C10	119.41 (14)
C2—C3—H3A	109.0	C8—C9—H9A	120.3
N2—C3—H3B	109.0	C10—C9—H9A	120.3
C2—C3—H3B	109.0	C11—C10—C9	118.01 (15)
H3A—C3—H3B	107.8	C11—C10—H10A	121.0
C4—N2—N3	111.95 (11)	C9—C10—H10A	121.0
C4—N2—C3	127.56 (12)	N4—C11—C10	123.96 (15)
N3—N2—C3	120.47 (11)	N4—C11—H11A	118.0
N2—C4—C5	107.59 (13)	C10—C11—H11A	118.0
N2—C4—H4A	126.2	C11—N4—C7	117.61 (12)
C5—C4—H4A	126.2		

Hydrogen-bond geometry (\AA , $^\circ$)

$D-H\cdots A$	$D-H$	$H\cdots A$	$D\cdots A$	$D-H\cdots A$
N1—H1A \cdots O1 ⁱ	0.86	2.11	2.968 (2)	175
N1—H1B \cdots N4 ⁱⁱ	0.86	2.21	3.055 (2)	167

Symmetry codes: (i) $-x+1, -y+1, -z+1$; (ii) $x, y, z-1$.