

Acta Crystallographica Section E

## Structure Reports

Online

ISSN 1600-5368

# catena-Poly[[bis[2-(1*H*-1,2,4-triazol-1-yl- $\kappa$ N<sup>4</sup>)pyrazine]cadmium(II)]-di- $\mu$ -thiocyanato- $\kappa^2$ S:N; $\kappa^2$ N:S]

 Hong Li<sup>a\*</sup> and Long Miao Xie<sup>b</sup>

<sup>a</sup>Department of Chemistry and Chemical Engineering, Institute of Materials Chemistry, Binzhou University, Binzhou 256603, People's Republic of China, and <sup>b</sup>Department of Chemistry, Shandong Normal University, Jinan 250014, People's Republic of China

Correspondence e-mail: honglizhang1968@yahoo.cn

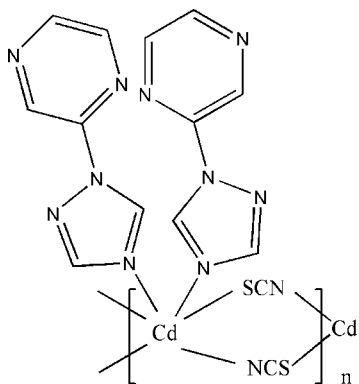
Received 6 July 2009; accepted 10 July 2009

Key indicators: single-crystal X-ray study;  $T = 298$  K; mean  $\sigma(\text{C}-\text{C}) = 0.004$  Å;  $R$  factor = 0.022;  $wR$  factor = 0.058; data-to-parameter ratio = 15.7.

The title compound,  $[\text{Cd}(\text{NCS})_2(\text{C}_6\text{H}_5\text{N}_5)_2]_n$ , is a coordination polymer with the Cd<sup>II</sup> centre located on a twofold rotation axis. The Cd<sup>II</sup> centre assumes a distorted octahedral geometry. The thiocyanate anions function as bridging ligands between the Cd<sup>II</sup> centres, leading to a chain-like arrangement expanding along [001].

## Related literature

For a related structure, see: Yang &amp; Shi (2008).



## Experimental

## Crystal data

$[\text{Cd}(\text{NCS})_2(\text{C}_6\text{H}_5\text{N}_5)_2]$   
 $M_r = 522.86$   
 Monoclinic,  $C2/c$   
 $a = 25.818$  (4) Å  
 $b = 7.4077$  (10) Å  
 $c = 11.0276$  (15) Å  
 $\beta = 113.843$  (2)°

$V = 1929.1$  (5) Å<sup>3</sup>  
 $Z = 4$   
 Mo  $K\alpha$  radiation  
 $\mu = 1.38$  mm<sup>-1</sup>  
 $T = 298$  K  
 $0.41 \times 0.21 \times 0.20$  mm

## Data collection

Bruker SMART APEX CCD diffractometer  
 Absorption correction: multi-scan (*SADABS*; Bruker, 1997)  
 $T_{\min} = 0.602$ ,  $T_{\max} = 0.770$

5381 measured reflections  
 2085 independent reflections  
 2005 reflections with  $I > 2\sigma(I)$   
 $R_{\text{int}} = 0.022$

## Refinement

$R[F^2 > 2\sigma(F^2)] = 0.022$   
 $wR(F^2) = 0.058$   
 $S = 1.10$   
 2085 reflections

133 parameters  
 H-atom parameters constrained  
 $\Delta\rho_{\max} = 0.35$  e Å<sup>-3</sup>  
 $\Delta\rho_{\min} = -0.47$  e Å<sup>-3</sup>

Data collection: *SMART* (Bruker, 1997); cell refinement: *SAINT* (Bruker, 1997); data reduction: *SAINT*; program(s) used to solve structure: *SHELXS97* (Sheldrick, 2008); program(s) used to refine structure: *SHELXL97* (Sheldrick, 2008); molecular graphics: *SHELXTL* (Sheldrick, 2008); software used to prepare material for publication: *SHELXTL*.

The authors thank the Project of Scientific Studies Development of Shandong Provincial Education Department (grant No. J08LC51) and the Natural Science Foundation of Shandong Province (grant No. Y2007B26).

Supplementary data and figures for this paper are available from the IUCr electronic archives (Reference: BT2992).

## References

- Bruker (1997). *SMART*, *SAINT* and *SADABS*. Bruker AXS Inc., Madison, Wisconsin, USA.  
 Sheldrick, G. M. (2008). *Acta Cryst.* **A64**, 112–122.  
 Yang, L. Y. & Shi, J. M. (2008). *Acta Cryst.* **E64**, m1387.

## supporting information

*Acta Cryst.* (2009). E65, m935 [doi:10.1107/S1600536809027135]

**catena-Poly[[bis[2-(1*H*-1,2,4-triazol-1-yl- $\kappa$ N<sup>4</sup>)pyrazine]cadmium(II)]-di- $\mu$ -thiocyanato- $\kappa^2$ S:N; $\kappa^2$ N:S]**

**Hong Li and Long Miao Xie**

**S1. Comment**

2-(1*H*-1,2,4-triazol-1-yl)pyrazine is similar to 2-(pyrazol-1-yl)pyrazine (Yang & Shi, 2008) and therefore it should act as a bridging ligand. We are interested in synthesizing complexes with mixed bridging ligands and selected thiocyanato and 2-(1*H*-1,2,4-triazol-1-yl)pyrazine as ligands. However, 2-(1*H*-1,2,4-triazol-1-yl)pyrazine only functions as a terminal ligand.

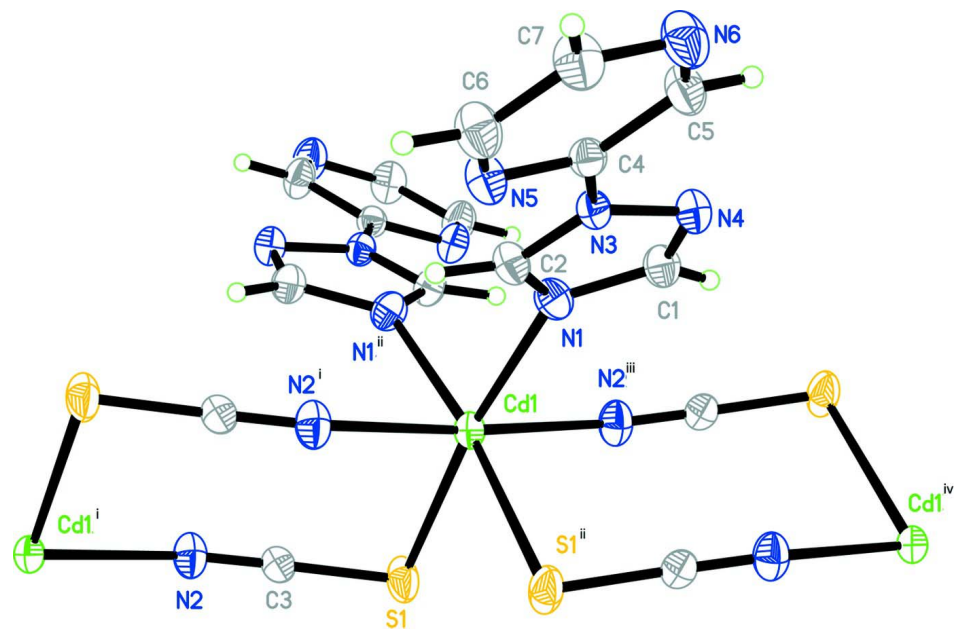
The coordination geometry of the Cd centres is shown in Fig. 1. The Cd atom is in a distorted octahedral CdN<sub>4</sub>S<sub>2</sub> coordination geometry. In the crystal each Cd<sup>II</sup> ion is surrounded by two other symmetry-related Cd<sup>II</sup> ions with separation with 5.7105 (7) Å and the adjacent Cd<sup>II</sup> ions were bridged by two thiocyanato anions and it forms a one-dimensional chain along the *c* axis. 2-(1*H*-1,2,4-triazol-1-yl)pyrazine only acts as a monodentate ligand.

**S2. Experimental**

6 ml methanol solution of 2-(1*H*-1,2,4-triazol-1-yl)pyrazine (0.0345 g, 0.191 mmol), 5 ml Cd(ClO<sub>4</sub>)<sub>2</sub>·6H<sub>2</sub>O (0.0809 g, 0.193 mmol) H<sub>2</sub>O solution and 5 ml NaSCN (0.0315 g, 0.389 mmol) H<sub>2</sub>O solution were mixed together and stirred for a few minutes. The colorless single crystals were obtained after the filtrate had been allowed to stand at room temperature for two weeks.

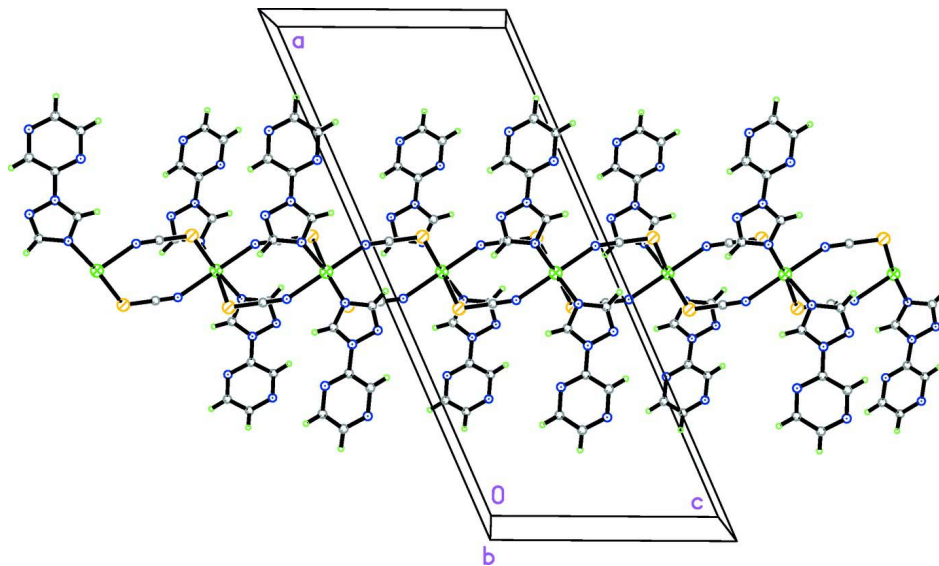
**S3. Refinement**

All H atoms were placed in calculated positions and refined as riding with C—H = 0.93 Å and  $U_{\text{iso}}(\text{H}) = 1.2U_{\text{eq}}(\text{C})$ .



**Figure 1**

Coordination around the Cd atom with the atom-numbering scheme. Displacement ellipsoids are drawn at the 30% probability level. [Symmetry codes: (i)  $-x + 1, -y, -z + 1$  (ii)  $-x + 1, y, -z + 3/2$  (iii)  $x, -y, z + 1/2$  (iv)  $-x + 1, -y, -z + 2$ ]



**Figure 2**

Packing diagram of the title compound.

**catena-Poly[[bis[2-(1*H*-1,2,4-triazol-1-yl- $\kappa$ N<sup>4</sup>)pyrazine]cadmium(II)]-di- $\mu$ -thiocyanato- $\kappa^2$ S:N; $\kappa^2$ N:S]**

*Crystal data*

[Cd(NCS)<sub>2</sub>(C<sub>6</sub>H<sub>5</sub>N<sub>5</sub>)<sub>2</sub>]

$M_r = 522.86$

Monoclinic,  $C2/c$

Hall symbol:  $-C 2yc$

$a = 25.818 (4) \text{ \AA}$

$b = 7.4077 (10) \text{ \AA}$

$c = 11.0276 (15) \text{ \AA}$

$\beta = 113.843 (2)^\circ$

$V = 1929.1 (5) \text{ \AA}^3$

$Z = 4$

$F(000) = 1032$   
 $D_x = 1.800 \text{ Mg m}^{-3}$   
 Mo  $K\alpha$  radiation,  $\lambda = 0.71073 \text{ \AA}$   
 Cell parameters from 4306 reflections  
 $\theta = 2.9\text{--}28.3^\circ$

$\mu = 1.38 \text{ mm}^{-1}$   
 $T = 298 \text{ K}$   
 Block, colourless  
 $0.41 \times 0.21 \times 0.20 \text{ mm}$

*Data collection*

Bruker SMART APEX CCD  
 diffractometer  
 Radiation source: fine-focus sealed tube  
 Graphite monochromator  
 $\varphi$  and  $\omega$  scans  
 Absorption correction: multi-scan  
 (SADABS; Bruker, 1997)  
 $T_{\min} = 0.602$ ,  $T_{\max} = 0.770$

5381 measured reflections  
 2085 independent reflections  
 2005 reflections with  $I > 2\sigma(I)$   
 $R_{\text{int}} = 0.022$   
 $\theta_{\text{max}} = 27.0^\circ$ ,  $\theta_{\text{min}} = 1.7^\circ$   
 $h = -32 \rightarrow 23$   
 $k = -7 \rightarrow 9$   
 $l = -10 \rightarrow 13$

*Refinement*

Refinement on  $F^2$   
 Least-squares matrix: full  
 $R[F^2 > 2\sigma(F^2)] = 0.022$   
 $wR(F^2) = 0.058$   
 $S = 1.10$   
 2085 reflections  
 133 parameters  
 0 restraints  
 Primary atom site location: structure-invariant  
 direct methods  
 Secondary atom site location: difference Fourier  
 map

Hydrogen site location: inferred from  
 neighbouring sites  
 H-atom parameters constrained  
 $w = 1/[\sigma^2(F_o^2) + (0.0298P)^2 + 1.3229P]$   
 where  $P = (F_o^2 + 2F_c^2)/3$   
 $(\Delta/\sigma)_{\text{max}} = 0.002$   
 $\Delta\rho_{\text{max}} = 0.35 \text{ e \AA}^{-3}$   
 $\Delta\rho_{\text{min}} = -0.47 \text{ e \AA}^{-3}$   
 Extinction correction: SHELXL97 (Sheldrick,  
 2008),  $F_c^* = kF_c[1 + 0.001x F_c^2 \lambda^3 / \sin(2\theta)]^{-1/4}$   
 Extinction coefficient: 0.0082 (3)

*Special details*

**Geometry.** All e.s.d.'s (except the e.s.d. in the dihedral angle between two l.s. planes) are estimated using the full covariance matrix. The cell e.s.d.'s are taken into account individually in the estimation of e.s.d.'s in distances, angles and torsion angles; correlations between e.s.d.'s in cell parameters are only used when they are defined by crystal symmetry. An approximate (isotropic) treatment of cell e.s.d.'s is used for estimating e.s.d.'s involving l.s. planes.

**Refinement.** Refinement of  $F^2$  against ALL reflections. The weighted  $R$ -factor  $wR$  and goodness of fit  $S$  are based on  $F^2$ , conventional  $R$ -factors  $R$  are based on  $F$ , with  $F$  set to zero for negative  $F^2$ . The threshold expression of  $F^2 > \sigma(F^2)$  is used only for calculating  $R$ -factors(gt) etc. and is not relevant to the choice of reflections for refinement.  $R$ -factors based on  $F^2$  are statistically about twice as large as those based on  $F$ , and  $R$ -factors based on ALL data will be even larger.

*Fractional atomic coordinates and isotropic or equivalent isotropic displacement parameters ( $\text{\AA}^2$ )*

	$x$	$y$	$z$	$U_{\text{iso}}^*/U_{\text{eq}}$
C1	0.43493 (9)	0.3626 (3)	0.9002 (2)	0.0392 (5)
H1	0.4636	0.3440	0.9838	0.047*
C2	0.39121 (9)	0.3614 (3)	0.6932 (2)	0.0382 (4)
H2	0.3808	0.3457	0.6027	0.046*
C3	0.56274 (8)	-0.1295 (3)	0.5829 (2)	0.0334 (4)
C4	0.30256 (8)	0.5013 (3)	0.68395 (18)	0.0322 (4)
C5	0.27688 (11)	0.5921 (3)	0.7544 (2)	0.0455 (5)
H5	0.2974	0.6177	0.8437	0.055*
C6	0.22301 (10)	0.5174 (4)	0.4984 (2)	0.0493 (5)
H6	0.2029	0.4949	0.4084	0.059*

C7	0.19638 (11)	0.6044 (3)	0.5671 (3)	0.0505 (6)
H7	0.1586	0.6371	0.5226	0.061*
Cd1	0.5000	0.10030 (3)	0.7500	0.03107 (10)
N1	0.43983 (7)	0.3119 (2)	0.78646 (17)	0.0391 (4)
N2	0.55550 (9)	-0.1113 (3)	0.47410 (19)	0.0455 (5)
N3	0.35900 (7)	0.4377 (2)	0.74783 (16)	0.0317 (3)
N4	0.38687 (8)	0.4394 (2)	0.88241 (17)	0.0377 (4)
N5	0.27701 (8)	0.4642 (3)	0.55708 (17)	0.0422 (4)
N6	0.22297 (9)	0.6433 (3)	0.6954 (2)	0.0535 (5)
S1	0.57240 (3)	-0.15916 (10)	0.73782 (5)	0.05367 (18)

*Atomic displacement parameters (Å<sup>2</sup>)*

	$U^{11}$	$U^{22}$	$U^{33}$	$U^{12}$	$U^{13}$	$U^{23}$
C1	0.0367 (11)	0.0455 (11)	0.0340 (10)	-0.0001 (9)	0.0129 (9)	-0.0018 (9)
C2	0.0371 (11)	0.0444 (11)	0.0356 (10)	0.0028 (9)	0.0172 (9)	-0.0052 (8)
C3	0.0287 (9)	0.0379 (10)	0.0307 (10)	0.0051 (7)	0.0089 (8)	-0.0017 (7)
C4	0.0329 (9)	0.0331 (9)	0.0335 (10)	0.0004 (7)	0.0162 (8)	0.0008 (7)
C5	0.0460 (13)	0.0563 (14)	0.0358 (11)	0.0117 (10)	0.0181 (10)	-0.0034 (9)
C6	0.0409 (12)	0.0649 (15)	0.0373 (11)	0.0040 (11)	0.0106 (9)	-0.0060 (10)
C7	0.0370 (12)	0.0666 (16)	0.0452 (14)	0.0126 (10)	0.0138 (11)	0.0007 (10)
Cd1	0.03018 (13)	0.03752 (14)	0.02687 (13)	0.000	0.01294 (9)	0.000
N1	0.0349 (9)	0.0439 (10)	0.0404 (9)	0.0014 (7)	0.0171 (7)	-0.0046 (8)
N2	0.0428 (10)	0.0607 (12)	0.0319 (10)	0.0058 (8)	0.0141 (8)	0.0017 (8)
N3	0.0321 (8)	0.0356 (8)	0.0300 (8)	-0.0009 (6)	0.0153 (7)	-0.0026 (6)
N4	0.0367 (9)	0.0465 (9)	0.0302 (9)	0.0006 (7)	0.0138 (7)	-0.0024 (7)
N5	0.0369 (9)	0.0549 (10)	0.0349 (9)	0.0035 (8)	0.0146 (7)	-0.0061 (8)
N6	0.0476 (11)	0.0696 (13)	0.0450 (11)	0.0190 (10)	0.0204 (9)	-0.0017 (10)
S1	0.0699 (4)	0.0614 (4)	0.0296 (3)	0.0323 (3)	0.0201 (3)	0.0093 (2)

*Geometric parameters (Å, °)*

C1—N4	1.306 (3)	C6—N5	1.337 (3)
C1—N1	1.363 (3)	C6—C7	1.372 (3)
C1—H1	0.9300	C6—H6	0.9300
C2—N1	1.313 (3)	C7—N6	1.331 (3)
C2—N3	1.334 (3)	C7—H7	0.9300
C2—H2	0.9300	Cd1—N2 <sup>i</sup>	2.3031 (19)
C3—N2	1.145 (3)	Cd1—N2 <sup>ii</sup>	2.3031 (19)
C3—S1	1.639 (2)	Cd1—N1 <sup>iii</sup>	2.3528 (18)
C4—N5	1.312 (3)	Cd1—N1	2.3528 (17)
C4—C5	1.383 (3)	Cd1—S1 <sup>iii</sup>	2.7220 (6)
C4—N3	1.418 (2)	Cd1—S1	2.7220 (6)
C5—N6	1.331 (3)	N2—Cd1 <sup>ii</sup>	2.3031 (19)
C5—H5	0.9300	N3—N4	1.363 (2)
N4—C1—N1	114.71 (19)	N2 <sup>ii</sup> —Cd1—N1	89.56 (7)
N4—C1—H1	122.6	N1 <sup>iii</sup> —Cd1—N1	96.47 (9)

N1—C1—H1	122.6	N2 <sup>i</sup> —Cd1—S1 <sup>iii</sup>	96.54 (5)
N1—C2—N3	109.75 (19)	N2 <sup>ii</sup> —Cd1—S1 <sup>iii</sup>	86.34 (5)
N1—C2—H2	125.1	N1 <sup>iii</sup> —Cd1—S1 <sup>iii</sup>	173.10 (5)
N3—C2—H2	125.1	N1—Cd1—S1 <sup>iii</sup>	87.01 (5)
N2—C3—S1	178.9 (2)	N2 <sup>i</sup> —Cd1—S1	86.34 (5)
N5—C4—C5	123.5 (2)	N2 <sup>ii</sup> —Cd1—S1	96.54 (5)
N5—C4—N3	115.64 (17)	N1 <sup>iii</sup> —Cd1—S1	87.01 (5)
C5—C4—N3	120.82 (18)	N1—Cd1—S1	173.10 (5)
N6—C5—C4	120.5 (2)	S1 <sup>iii</sup> —Cd1—S1	90.16 (4)
N6—C5—H5	119.7	C2—N1—C1	103.22 (18)
C4—C5—H5	119.7	C2—N1—Cd1	122.72 (14)
N5—C6—C7	121.9 (2)	C1—N1—Cd1	130.85 (14)
N5—C6—H6	119.1	C3—N2—Cd1 <sup>ii</sup>	153.59 (19)
C7—C6—H6	119.1	C2—N3—N4	110.16 (17)
N6—C7—C6	122.0 (2)	C2—N3—C4	128.28 (17)
N6—C7—H7	119.0	N4—N3—C4	121.46 (16)
C6—C7—H7	119.0	C1—N4—N3	102.16 (16)
N2 <sup>i</sup> —Cd1—N2 <sup>ii</sup>	175.94 (10)	C4—N5—C6	115.50 (19)
N2 <sup>i</sup> —Cd1—N1 <sup>iii</sup>	89.56 (7)	C7—N6—C5	116.5 (2)
N2 <sup>ii</sup> —Cd1—N1 <sup>iii</sup>	87.73 (7)	C3—S1—Cd1	97.98 (7)
N2 <sup>i</sup> —Cd1—N1	87.73 (7)		

Symmetry codes: (i)  $x, -y, z+1/2$ ; (ii)  $-x+1, -y, -z+1$ ; (iii)  $-x+1, y, -z+3/2$ .