

Acta Crystallographica Section E

Structure Reports

Online

ISSN 1600-5368

N'-(3-Methoxybenzylidene)acetohydrazide

Lu-Ping Lv,^a Tie-Ming Yu,^a Wen-Bo Yu,^a Wei-Wei Li^a and Xian-Chao Hu^{b*}

^aDepartment of Chemical Engineering, Hangzhou Vocational and Technical College, Hangzhou 310018, People's Republic of China, and ^bResearch Center of Analysis and Measurement, Zhejiang University of Technology, Hangzhou 310014, People's Republic of China

Correspondence e-mail: zgdxhc@126.com

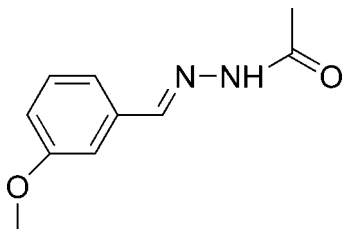
Received 20 July 2009; accepted 21 July 2009

Key indicators: single-crystal X-ray study; $T = 223$ K; mean $\sigma(\text{C}-\text{C}) = 0.002$ Å; R factor = 0.040; wR factor = 0.116; data-to-parameter ratio = 13.6.

In the title molecule, $\text{C}_{10}\text{H}_{12}\text{N}_2\text{O}_2$, the acetohydrazide group is planar within 0.012 (1) Å and forms a dihedral angle of 5.25 (8)° with the benzene ring. The methoxy group is coplanar with the attached benzene ring [C—O—C—C = 0.1 (2)°]. The molecule adopts a *trans* configuration with respect to the C=N double bond. In the crystal, molecules are linked into centrosymmetric dimers by N—H...O hydrogen bonds and these dimers are linked into a ribbon-like structure along [110] by C—H...O hydrogen bonds. In addition, an intermolecular C—H... π interaction is observed.

Related literature

For general background to the analytical applications of Schiff bases, see: Cimerman *et al.* (1997). For their mild bacteriostatic activity and potential use as oral iron-chelating drugs for genetic disorders such as thalassemia, see: Offe *et al.* (1952); Richardson *et al.* (1988). For related structures, see: Li & Jian (2008); Tamboura *et al.* (2009).



Experimental

Crystal data

$\text{C}_{10}\text{H}_{12}\text{N}_2\text{O}_2$
 $M_r = 192.22$
 Monoclinic, $P2_1/c$
 $a = 12.394$ (4) Å
 $b = 5.7278$ (19) Å
 $c = 15.017$ (5) Å
 $\beta = 107.126$ (4)°
 $V = 1018.8$ (6) Å³
 $Z = 4$
 Mo $K\alpha$ radiation
 $\mu = 0.09$ mm⁻¹
 $T = 223$ K
 $0.23 \times 0.22 \times 0.18$ mm

Data collection

Bruker SMART CCD area-detector diffractometer
 Absorption correction: multi-scan (SADABS; Bruker, 2002)
 $T_{\min} = 0.982$, $T_{\max} = 0.985$
 4871 measured reflections
 1768 independent reflections
 1502 reflections with $I > 2\sigma(I)$
 $R_{\text{int}} = 0.025$

Refinement

$R[F^2 > 2\sigma(F^2)] = 0.040$
 $wR(F^2) = 0.116$
 $S = 1.07$
 1768 reflections
 130 parameters
 H-atom parameters constrained
 $\Delta\rho_{\text{max}} = 0.14$ e Å⁻³
 $\Delta\rho_{\text{min}} = -0.15$ e Å⁻³

Table 1

Hydrogen-bond geometry (Å, °).

D—H...A	D—H	H...A	D...A	D—H...A
N2—H2...O2 ⁱ	0.86	2.04	2.8846 (19)	169
C1—H1B...O2 ⁱⁱ	0.96	2.49	3.350 (2)	148
C3—H3...Cg1 ⁱⁱⁱ	0.93	2.83	3.544 (2)	134

Symmetry codes: (i) $-x + 1, -y - 1, -z + 1$; (ii) $x + 1, y + 1, z$; (iii) $-x, y - \frac{1}{2}, -z + \frac{1}{2}$. Cg1 is the centroid of the C2-C7 ring.

Data collection: SMART (Bruker, 2002); cell refinement: SAINT (Bruker, 2002); data reduction: SAINT; program(s) used to solve structure: SHELXS97 (Sheldrick, 2008); program(s) used to refine structure: SHELXL97 (Sheldrick, 2008); molecular graphics: SHELXTL (Sheldrick, 2008); software used to prepare material for publication: SHELXTL.

The authors thank the Science and Technology Project of Zhejiang Province (grant No. 2007 F70077) and Hangzhou Vocational and Technical College for financial support.

Supplementary data and figures for this paper are available from the IUCr electronic archives (Reference: CI2861).

References

- Bruker (2002). SMART, SAINT and SADABS. Bruker AXS Inc., Madison, Wisconsin, USA.
 Cimerman, Z., Galic, N. & Bosner, B. (1997). *Anal. Chim. Acta*, **343**, 145–153.
 Li, Y.-F. & Jian, F.-F. (2008). *Acta Cryst. E* **64**, o2409.
 Offe, H. A., Siefen, W. & Domagk, G. (1952). *Z. Naturforsch. Teil B*, **7**, 446–447.
 Richardson, D., Baker, E., Ponka, P., Wilairat, P., Vitolo, M. L. & Webb, J. (1988). *Thalassemia: Pathophysiology and Management*, Part B, p. 81. New York: Alan R. Liss.
 Sheldrick, G. M. (2008). *Acta Cryst. A* **64**, 112–122.
 Tamboura, F. B., Gaye, M., Sall, A. S., Barry, A. H. & Bah, Y. (2009). *Acta Cryst. E* **65**, m160–m161.

supporting information

Acta Cryst. (2009). E65, o1990 [doi:10.1107/S1600536809028864]

***N'*-(3-Methoxybenzylidene)acetohydrazide**

Lu-Ping Lv, Tie-Ming Yu, Wen-Bo Yu, Wei-Wei Li and Xian-Chao Hu

S1. Comment

Schiff bases have attracted much attention due to the possibility of their analytical applications (Cimerman *et al.*, 1997). They are also important ligands, which have been reported to have mild bacteriostatic activity and are used as potential oral iron-chelating drugs for genetic disorders such as thalassemia (Offe *et al.*, 1952; Richardson *et al.*, 1988). Metal complexes based on Schiff bases have received considerable attention because they can be utilized as model compounds of active centres in various complexes (Tamboura *et al.*, 2009). We report here the crystal structure of the title compound (Fig. 1).

The acetohydrazide group is planar and it forms a dihedral angle of 5.25 (8)° with the benzene ring. The methoxy group is coplanar with the attached benzene ring [C1—O1—C2—C3 = 0.1 (2)°]. The molecule adopts a *trans* configuration with respect to the C=N bond. Bond lengths and angles are comparable to those observed for *N'*-[1-(4-methoxyphenyl)-ethylidene]acetohydrazide (Li & Jian, 2008).

The molecules are linked by N—H···O hydrogen bonds into a centrosymmetric dimer. These dimers are linked into a ribbon-like structure along the [110] by C—H···O hydrogen bonds (Table 1 and Fig.2). In addition, an intermolecular C—H··· π interaction is observed

S2. Experimental

3-Methoxybenzaldehyde (1.36 g, 0.01 mol) and acetohydrazide (0.74 g, 0.01 mol) were dissolved in stirred methanol (20 ml) and left for 2.5 h at room temperature. The resulting solid was filtered off and recrystallized from ethanol to give the title compound in 83% yield. Single crystals suitable for X-ray analysis were obtained by slow evaporation of an ethanol solution at room temperature (m.p. 485–487 K).

S3. Refinement

H atoms were positioned geometrically (N-H = 0.86 Å and C-H = 0.93 or 0.96 Å) and refined using a riding model, with $U_{\text{iso}}(\text{H}) = 1.2U_{\text{eq}}(\text{C}, \text{N})$ and $1.5U_{\text{eq}}(\text{C}_{\text{methyl}})$. A rotating group model was used for the methyl groups.

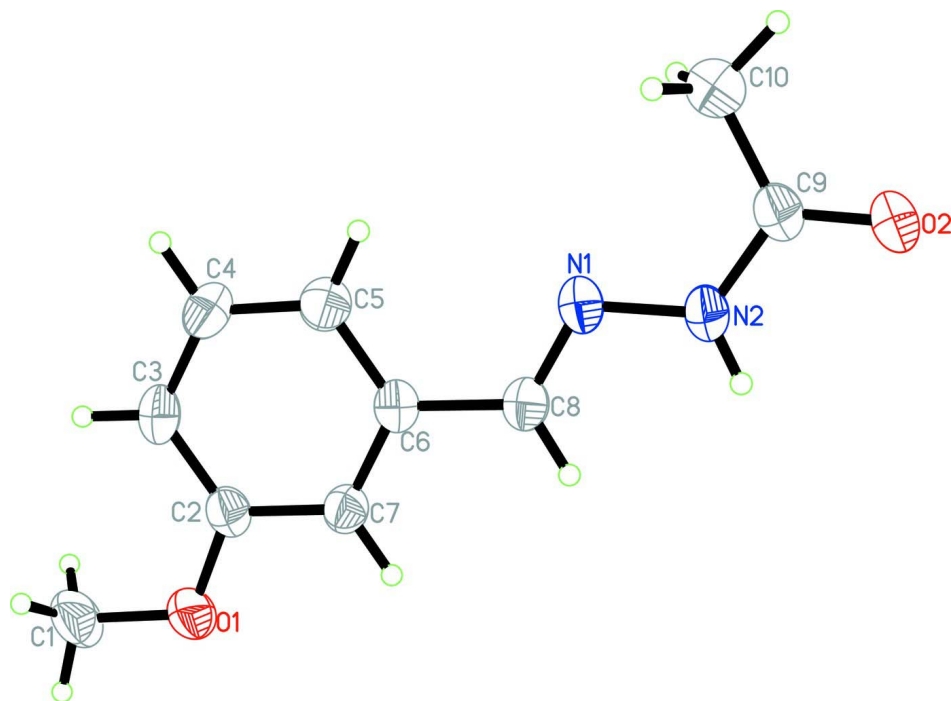


Figure 1

The molecular structure of the title compound. Displacement ellipsoids are drawn at the 40% probability level.

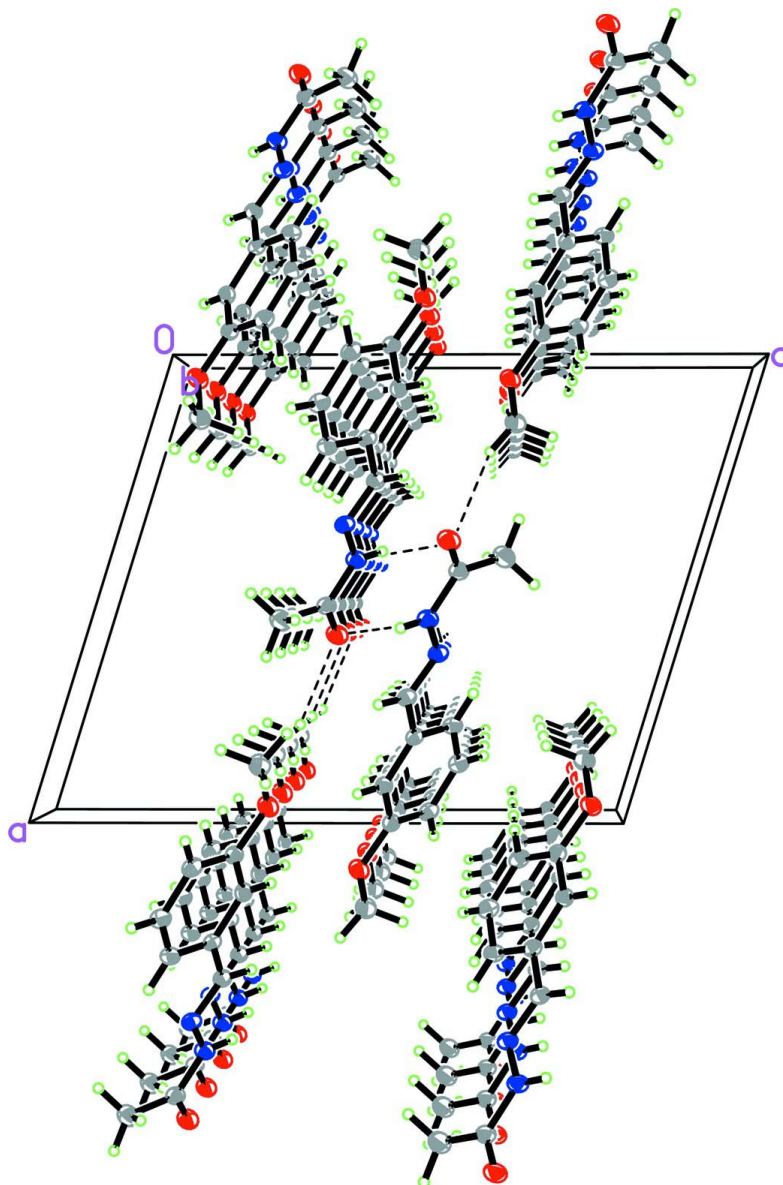


Figure 2

Part of the crystal packing of the title compound. Hydrogen bonds are shown as dashed lines.

***N'*-(3-Methoxybenzylidene)acetohydrazide**

Crystal data

$C_{10}H_{12}N_2O_2$

$M_r = 192.22$

Monoclinic, $P2_1/c$

Hall symbol: $-P\ 2_1/c$

$a = 12.394\ (4)\ \text{\AA}$

$b = 5.7278\ (19)\ \text{\AA}$

$c = 15.017\ (5)\ \text{\AA}$

$\beta = 107.126\ (4)^\circ$

$V = 1018.8\ (6)\ \text{\AA}^3$

$Z = 4$

$F(000) = 408$

$D_x = 1.253\ \text{Mg m}^{-3}$

Mo $K\alpha$ radiation, $\lambda = 0.71073\ \text{\AA}$

Cell parameters from 1768 reflections

$\theta = 1.7\text{--}25.0^\circ$

$\mu = 0.09\ \text{mm}^{-1}$

$T = 223\ \text{K}$

Block, colourless

$0.23 \times 0.22 \times 0.18\ \text{mm}$

Data collection

Bruker SMART CCD area-detector
diffractometer
Radiation source: fine-focus sealed tube
Graphite monochromator
 φ and ω scans
Absorption correction: multi-scan
(*SADABS*; Bruker, 2002)
 $T_{\min} = 0.982$, $T_{\max} = 0.985$

4871 measured reflections
1768 independent reflections
1502 reflections with $I > 2\sigma(I)$
 $R_{\text{int}} = 0.025$
 $\theta_{\text{max}} = 25.0^\circ$, $\theta_{\text{min}} = 1.7^\circ$
 $h = -13 \rightarrow 14$
 $k = -6 \rightarrow 6$
 $l = -17 \rightarrow 17$

Refinement

Refinement on F^2
Least-squares matrix: full
 $R[F^2 > 2\sigma(F^2)] = 0.040$
 $wR(F^2) = 0.116$
 $S = 1.07$
1768 reflections
130 parameters
0 restraints
Primary atom site location: structure-invariant
direct methods
Secondary atom site location: difference Fourier
map

Hydrogen site location: inferred from
neighbouring sites
H-atom parameters constrained
 $w = 1/[\sigma^2(F_o^2) + (0.0591P)^2 + 0.1504P]$
where $P = (F_o^2 + 2F_c^2)/3$
 $(\Delta/\sigma)_{\text{max}} = 0.001$
 $\Delta\rho_{\text{max}} = 0.14 \text{ e } \text{\AA}^{-3}$
 $\Delta\rho_{\text{min}} = -0.15 \text{ e } \text{\AA}^{-3}$
Extinction correction: *SHELXL97* (Sheldrick,
2008), $F_c^* = kFc[1 + 0.001x \text{Fc}^2 \lambda^3 / \sin(2\theta)]^{-1/4}$
Extinction coefficient: 0.013 (3)

Special details

Geometry. All esds (except the esd in the dihedral angle between two l.s. planes) are estimated using the full covariance matrix. The cell esds are taken into account individually in the estimation of esds in distances, angles and torsion angles; correlations between esds in cell parameters are only used when they are defined by crystal symmetry. An approximate (isotropic) treatment of cell esds is used for estimating esds involving l.s. planes.

Refinement. Refinement of F^2 against ALL reflections. The weighted R-factor wR and goodness of fit S are based on F^2 , conventional R-factors R are based on F , with F set to zero for negative F^2 . The threshold expression of $F^2 > 2\sigma(F^2)$ is used only for calculating R-factors(gt) etc. and is not relevant to the choice of reflections for refinement. R-factors based on F^2 are statistically about twice as large as those based on F , and R-factors based on ALL data will be even larger.

Fractional atomic coordinates and isotropic or equivalent isotropic displacement parameters (\AA^2)

	<i>x</i>	<i>y</i>	<i>z</i>	$U_{\text{iso}}^*/U_{\text{eq}}$
C1	1.15806 (15)	0.4646 (4)	0.61337 (12)	0.0650 (5)
H1A	1.1261	0.6149	0.5928	0.097*
H1B	1.2183	0.4331	0.5869	0.097*
H1C	1.1870	0.4637	0.6801	0.097*
C2	0.97784 (11)	0.3121 (3)	0.61264 (9)	0.0406 (4)
C3	0.96000 (13)	0.4924 (3)	0.66739 (10)	0.0450 (4)
H3	1.0137	0.6094	0.6876	0.054*
C4	0.86019 (12)	0.4960 (3)	0.69187 (11)	0.0479 (4)
H4	0.8475	0.6175	0.7286	0.057*
C5	0.77987 (12)	0.3247 (3)	0.66313 (10)	0.0449 (4)
H5	0.7136	0.3308	0.6801	0.054*
C6	0.79857 (11)	0.1412 (2)	0.60826 (9)	0.0376 (4)
C7	0.89771 (11)	0.1359 (3)	0.58332 (9)	0.0403 (4)
H7	0.9108	0.0142	0.5468	0.048*
C8	0.71693 (11)	-0.0482 (3)	0.57784 (10)	0.0407 (4)

H8	0.7291	-0.1619	0.5376	0.049*
C9	0.46526 (12)	-0.2813 (3)	0.59895 (10)	0.0466 (4)
C10	0.43657 (15)	-0.1051 (3)	0.66193 (13)	0.0635 (5)
H10A	0.3628	-0.1375	0.6674	0.095*
H10B	0.4375	0.0484	0.6365	0.095*
H10C	0.4911	-0.1132	0.7224	0.095*
N1	0.62907 (10)	-0.0599 (2)	0.60576 (8)	0.0427 (3)
N2	0.55938 (10)	-0.2483 (2)	0.57366 (8)	0.0465 (4)
H2	0.5765	-0.3466	0.5367	0.056*
O1	1.07271 (9)	0.2889 (2)	0.58390 (7)	0.0574 (4)
O2	0.40548 (9)	-0.4534 (2)	0.57006 (8)	0.0591 (4)

Atomic displacement parameters (Å²)

	U^{11}	U^{22}	U^{33}	U^{12}	U^{13}	U^{23}
C1	0.0562 (10)	0.0801 (13)	0.0614 (10)	-0.0309 (9)	0.0216 (8)	-0.0073 (9)
C2	0.0391 (8)	0.0426 (9)	0.0388 (8)	-0.0071 (6)	0.0093 (6)	0.0021 (6)
C3	0.0440 (8)	0.0366 (8)	0.0478 (8)	-0.0091 (7)	0.0031 (6)	-0.0001 (6)
C4	0.0470 (9)	0.0380 (9)	0.0542 (9)	0.0020 (7)	0.0081 (7)	-0.0084 (7)
C5	0.0377 (8)	0.0437 (9)	0.0514 (9)	0.0026 (7)	0.0100 (6)	-0.0012 (7)
C6	0.0360 (7)	0.0351 (8)	0.0378 (7)	-0.0017 (6)	0.0048 (5)	0.0032 (6)
C7	0.0435 (8)	0.0387 (8)	0.0379 (7)	-0.0055 (6)	0.0108 (6)	-0.0030 (6)
C8	0.0386 (8)	0.0383 (8)	0.0422 (8)	-0.0028 (6)	0.0075 (6)	-0.0007 (6)
C9	0.0398 (8)	0.0500 (9)	0.0491 (9)	-0.0076 (7)	0.0117 (6)	0.0014 (7)
C10	0.0608 (10)	0.0665 (12)	0.0693 (11)	-0.0092 (9)	0.0285 (8)	-0.0101 (9)
N1	0.0372 (7)	0.0398 (7)	0.0481 (7)	-0.0070 (5)	0.0076 (5)	0.0003 (5)
N2	0.0399 (7)	0.0439 (8)	0.0555 (8)	-0.0116 (6)	0.0139 (5)	-0.0073 (6)
O1	0.0510 (7)	0.0670 (8)	0.0596 (7)	-0.0240 (6)	0.0249 (5)	-0.0157 (6)
O2	0.0502 (7)	0.0620 (8)	0.0693 (7)	-0.0217 (6)	0.0241 (5)	-0.0108 (6)

Geometric parameters (Å, °)

C1—O1	1.4326 (19)	C6—C7	1.3863 (19)
C1—H1A	0.96	C6—C8	1.4623 (19)
C1—H1B	0.96	C7—H7	0.93
C1—H1C	0.96	C8—N1	1.2786 (19)
C2—O1	1.3730 (17)	C8—H8	0.93
C2—C3	1.378 (2)	C9—O2	1.2328 (18)
C2—C7	1.3929 (19)	C9—N2	1.3423 (19)
C3—C4	1.391 (2)	C9—C10	1.496 (2)
C3—H3	0.93	C10—H10A	0.96
C4—C5	1.374 (2)	C10—H10B	0.96
C4—H4	0.93	C10—H10C	0.96
C5—C6	1.396 (2)	N1—N2	1.3774 (17)
C5—H5	0.93	N2—H2	0.86
O1—C1—H1A	109.5	C6—C7—C2	120.32 (13)
O1—C1—H1B	109.5	C6—C7—H7	119.8

H1A—C1—H1B	109.5	C2—C7—H7	119.8
O1—C1—H1C	109.5	N1—C8—C6	120.94 (13)
H1A—C1—H1C	109.5	N1—C8—H8	119.5
H1B—C1—H1C	109.5	C6—C8—H8	119.5
O1—C2—C3	124.24 (13)	O2—C9—N2	119.69 (14)
O1—C2—C7	115.31 (13)	O2—C9—C10	122.14 (14)
C3—C2—C7	120.45 (13)	N2—C9—C10	118.17 (14)
C2—C3—C4	118.71 (13)	C9—C10—H10A	109.5
C2—C3—H3	120.6	C9—C10—H10B	109.5
C4—C3—H3	120.6	H10A—C10—H10B	109.5
C5—C4—C3	121.68 (14)	C9—C10—H10C	109.5
C5—C4—H4	119.2	H10A—C10—H10C	109.5
C3—C4—H4	119.2	H10B—C10—H10C	109.5
C4—C5—C6	119.47 (14)	C8—N1—N2	115.66 (12)
C4—C5—H5	120.3	C9—N2—N1	121.26 (13)
C6—C5—H5	120.3	C9—N2—H2	119.4
C7—C6—C5	119.36 (13)	N1—N2—H2	119.4
C7—C6—C8	119.09 (13)	C2—O1—C1	117.24 (13)
C5—C6—C8	121.54 (13)		
O1—C2—C3—C4	-179.97 (13)	C3—C2—C7—C6	0.6 (2)
C7—C2—C3—C4	-0.6 (2)	C7—C6—C8—N1	174.14 (12)
C2—C3—C4—C5	0.2 (2)	C5—C6—C8—N1	-4.7 (2)
C3—C4—C5—C6	0.3 (2)	C6—C8—N1—N2	-178.96 (11)
C4—C5—C6—C7	-0.3 (2)	O2—C9—N2—N1	-178.98 (13)
C4—C5—C6—C8	178.48 (13)	C10—C9—N2—N1	1.1 (2)
C5—C6—C7—C2	-0.1 (2)	C8—N1—N2—C9	179.20 (12)
C8—C6—C7—C2	-178.92 (12)	C3—C2—O1—C1	0.1 (2)
O1—C2—C7—C6	179.96 (12)	C7—C2—O1—C1	-179.27 (13)

Hydrogen-bond geometry (Å, °)

<i>D</i> —H \cdots <i>A</i>	<i>D</i> —H	H \cdots <i>A</i>	<i>D</i> \cdots <i>A</i>	<i>D</i> —H \cdots <i>A</i>
N2—H2 \cdots O2 ⁱ	0.86	2.04	2.8846 (19)	169
C1—H1B \cdots O2 ⁱⁱ	0.96	2.49	3.350 (2)	148
C3—H3 \cdots Cg1 ⁱⁱⁱ	0.93	2.83	3.544 (2)	134

Symmetry codes: (i) $-x+1, -y-1, -z+1$; (ii) $x+1, y+1, z$; (iii) $-x, y-1/2, -z+1/2$.