

Acta Crystallographica Section E

## Structure Reports

Online

ISSN 1600-5368

**(Z)-1-(2,4-Difluorophenyl)-3-phenyl-2-(1H-1,2,4-triazol-1-yl)prop-2-en-1-one**

Cong-Yan Yan, Guang-Zhou Wang and Cheng-He Zhou\*

Laboratory of Bioorganic & Medicinal Chemistry, School of Chemistry and Chemical Engineering, Southwest University, Chongqing, 400715, People's Republic of China  
Correspondence e-mail: zhouch@swu.edu.cn

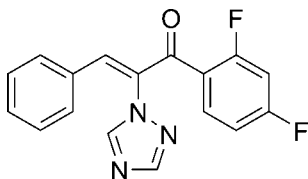
Received 23 July 2009; accepted 27 July 2009

Key indicators: single-crystal X-ray study;  $T = 296$  K; mean  $\sigma(\text{C}-\text{C}) = 0.003$  Å;  $R$  factor = 0.040;  $wR$  factor = 0.101; data-to-parameter ratio = 12.9.

In the title molecule,  $\text{C}_{17}\text{H}_{11}\text{F}_2\text{N}_3\text{O}$ , the triazole ring makes dihedral angles of  $83.00$  (5) and  $16.63$  (5)°, respectively, with the phenyl and benzene rings. Weak intermolecular  $\text{C}-\text{H}\cdots\text{F}$  and  $\text{C}-\text{H}\cdots\text{N}$  interactions contribute to the crystal packing.

## Related literature

For details of the synthesis, see: Wang *et al.* (2009). For the pharmacological activity of chalcones, see: Reichwald *et al.* (2008).



## Experimental

## Crystal data

 $\text{C}_{17}\text{H}_{11}\text{F}_2\text{N}_3\text{O}$  $M_r = 311.29$ Monoclinic,  $P2_1/n$  $a = 11.7595$  (16) Å $b = 7.5800$  (10) Å $c = 17.068$  (2) Å $\beta = 108.067$  (2)° $V = 1446.4$  (3) Å<sup>3</sup> $Z = 4$ Mo  $K\alpha$  radiation $\mu = 0.11$  mm<sup>-1</sup>  
 $T = 296$  K $0.25 \times 0.21 \times 0.14$  mm

## Data collection

Bruker SMART CCD area-detector diffractometer

Absorption correction: multi-scan (SADABS; Sheldrick, 1997)  
 $T_{\min} = 0.973$ ,  $T_{\max} = 0.985$ 10616 measured reflections  
2681 independent reflections  
1940 reflections with  $I > 2\sigma(I)$   
 $R_{\text{int}} = 0.029$ 

## Refinement

 $R[F^2 > 2\sigma(F^2)] = 0.040$  $wR(F^2) = 0.101$  $S = 1.02$ 

2681 reflections

208 parameters

H-atom parameters constrained

 $\Delta\rho_{\text{max}} = 0.11$  e Å<sup>-3</sup> $\Delta\rho_{\text{min}} = -0.19$  e Å<sup>-3</sup>

Table 1

Hydrogen-bond geometry (Å, °).

$D-H\cdots A$	$D-H$	$H\cdots A$	$D\cdots A$	$D-H\cdots A$
$\text{C12}-\text{H12}\cdots\text{N3}^{\text{i}}$	0.93	2.68	3.540 (2)	154
$\text{C17}-\text{H17}\cdots\text{F1}^{\text{ii}}$	0.93	2.62	3.280 (2)	128

Symmetry codes: (i)  $x - \frac{1}{2}, -y + \frac{1}{2}, z - \frac{1}{2}$ ; (ii)  $-x + \frac{1}{2}, y + \frac{1}{2}, -z + \frac{1}{2}$ .

Data collection: SMART (Bruker, 1997); cell refinement: SAINT-Plus (Bruker, 1997); data reduction: SAINT-Plus; program(s) used to solve structure: SHELXS97 (Sheldrick, 2008); program(s) used to refine structure: SHELXL97 (Sheldrick, 2008); molecular graphics: SHELXTL (Sheldrick, 2008); software used to prepare material for publication: SHELXTL.

We thank the Southwest University (grant Nos. SWUB2006018 & XSGX0602) and Natural Science Foundation of Chongqing (grant No. 2007BB5369) for financial support.

Supplementary data and figures for this paper are available from the IUCr electronic archives (Reference: CV2596).

## References

- Bruker (1997). SMART and SAINT-Plus. Bruker AXS Inc., Madison, Wisconsin, USA.  
Reichwald, C., Shimony, O., Dunkel, U., Sacerdoti-Sierra, N., Jaffe, C. L. & Kunick, C. (2008). *J. Med. Chem.* **51**, 659–665.  
Sheldrick, G. M. (1997). SADABS. Bruker AXS Inc., Madison, Wisconsin, USA.  
Sheldrick, G. M. (2008). *Acta Cryst.* **A64**, 112–122.  
Wang, G., Lu, Y., Zhou, C. & Zhang, Y. (2009). *Acta Cryst.* **E65**, o1113.

## supporting information

*Acta Cryst.* (2009). E65, o2054 [doi:10.1107/S1600536809029821]

**(Z)-1-(2,4-Difluorophenyl)-3-phenyl-2-(1H-1,2,4-triazol-1-yl)prop-2-en-1-one****Cong-Yan Yan, Guang-Zhou Wang and Cheng-He Zhou****S1. Comment**

Chalcones, considered as the precursors of flavonoids and isoflavonoids, are abundant in edible plants. Chalcones exhibit a variety of beneficial pharmacological activities such as antitumor, antibacterial, antifungal, antiinflammatory, antimalarial, antiviral and so on (Reichwald *et al.*, 2008). In view of the therapeutic potentials of chalcones, we synthesized the title compound (I). Herewith we report its crystal structure.

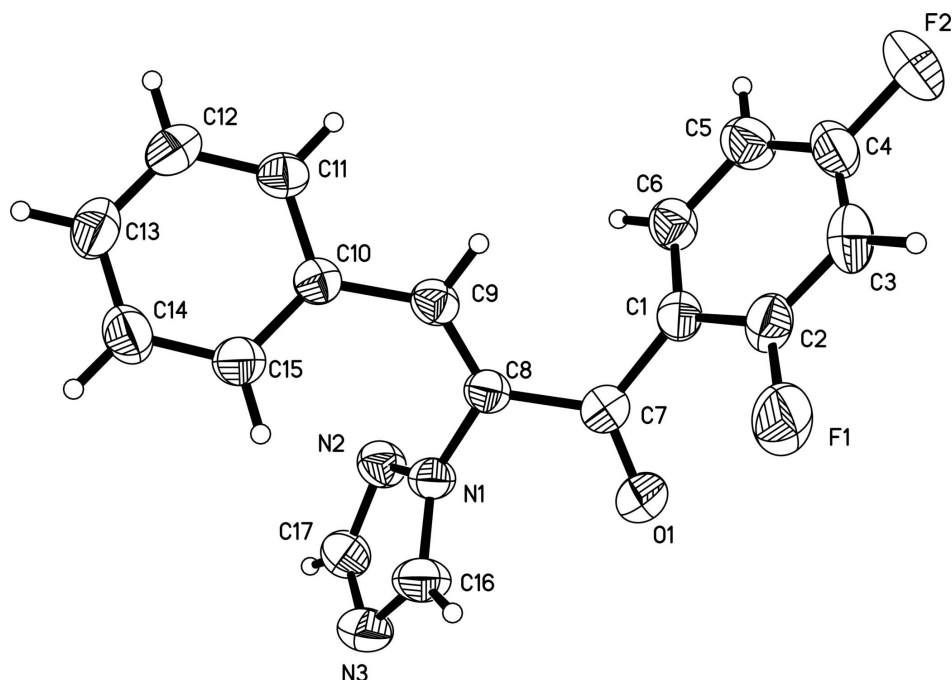
In (I) (Fig. 1), the triazole ring makes the dihedral angles of 83.00 (5)° and 16.63 (5)°, respectively, with the phenyl and benzene rings. Weak intermolecular C—H···F and C—H···N interactions (Table 1) contribute to the crystal packing stability.

**S2. Experimental**

Compound (I) was synthesized according to the procedure of Wang *et al.* (2009). A crystal of (I) suitable for X-ray analysis was grown from a mixture solution of ethyl acetate and petroleum ether by slow evaporation at room temperature.

**S3. Refinement**

All the hydrogen atoms were placed at the geometrical positions with C—H = 0.93 Å, and refined as riding, with  $U_{\text{iso}}(\text{H}) = 1.2 U_{\text{eq}}(\text{C})$ .

**Figure 1**

The molecular structure of (I), showing the atom-numbering scheme. Displacement ellipsoids are drawn at the 50% probability level.

**(Z)-1-(2,4-Difluorophenyl)-3-phenyl-2-(1H-1,2,4-triazol-1-yl)prop-2-en-1-one**

*Crystal data*

$C_{17}H_{11}F_2N_3O$

$M_r = 311.29$

Monoclinic,  $P2_1/n$

$a = 11.7595$  (16) Å

$b = 7.580$  (1) Å

$c = 17.068$  (2) Å

$\beta = 108.067$  (2)°

$V = 1446.4$  (3) Å<sup>3</sup>

$Z = 4$

$F(000) = 640$

$D_x = 1.429$  Mg m<sup>-3</sup>

Mo  $K\alpha$  radiation,  $\lambda = 0.71073$  Å

Cell parameters from 2124 reflections

$\theta = 2.5$ – $23.7^\circ$

$\mu = 0.11$  mm<sup>-1</sup>

$T = 296$  K

Block, colourless

$0.25 \times 0.21 \times 0.14$  mm

*Data collection*

Bruker SMART CCD area-detector

diffractometer

Radiation source: fine-focus sealed tube

Graphite monochromator

$\varphi$  and  $\omega$  scans

Absorption correction: multi-scan

(*SADABS*; Sheldrick, 1997)

$T_{\min} = 0.973$ ,  $T_{\max} = 0.985$

10616 measured reflections

2681 independent reflections

1940 reflections with  $I > 2\sigma(I)$

$R_{\text{int}} = 0.029$

$\theta_{\max} = 25.5^\circ$ ,  $\theta_{\min} = 2.5^\circ$

$h = -14 \rightarrow 14$

$k = -9 \rightarrow 9$

$l = -20 \rightarrow 20$

*Refinement*Refinement on  $F^2$ 

Least-squares matrix: full

 $R[F^2 > 2\sigma(F^2)] = 0.040$  $wR(F^2) = 0.101$  $S = 1.02$ 

2681 reflections

208 parameters

0 restraints

Primary atom site location: structure-invariant  
direct methodsSecondary atom site location: difference Fourier  
mapHydrogen site location: inferred from  
neighbouring sites

H-atom parameters constrained

 $w = 1/[\sigma^2(F_o^2) + (0.0432P)^2 + 0.2887P]$ where  $P = (F_o^2 + 2F_c^2)/3$  $(\Delta/\sigma)_{\max} < 0.001$  $\Delta\rho_{\max} = 0.11 \text{ e } \text{\AA}^{-3}$  $\Delta\rho_{\min} = -0.19 \text{ e } \text{\AA}^{-3}$ *Special details*

**Geometry.** All e.s.d.'s (except the e.s.d. in the dihedral angle between two l.s. planes) are estimated using the full covariance matrix. The cell e.s.d.'s are taken into account individually in the estimation of e.s.d.'s in distances, angles and torsion angles; correlations between e.s.d.'s in cell parameters are only used when they are defined by crystal symmetry. An approximate (isotropic) treatment of cell e.s.d.'s is used for estimating e.s.d.'s involving l.s. planes.

**Refinement.** Refinement of  $F^2$  against ALL reflections. The weighted  $R$ -factor  $wR$  and goodness of fit  $S$  are based on  $F^2$ , conventional  $R$ -factors  $R$  are based on  $F$ , with  $F$  set to zero for negative  $F^2$ . The threshold expression of  $F^2 > \sigma(F^2)$  is used only for calculating  $R$ -factors(gt) *etc.* and is not relevant to the choice of reflections for refinement.  $R$ -factors based on  $F^2$  are statistically about twice as large as those based on  $F$ , and  $R$ -factors based on ALL data will be even larger.

*Fractional atomic coordinates and isotropic or equivalent isotropic displacement parameters ( $\text{\AA}^2$ )*

	$x$	$y$	$z$	$U_{\text{iso}}^*/U_{\text{eq}}$
C1	0.37404 (14)	0.4189 (2)	0.17104 (10)	0.0410 (4)
C2	0.32338 (16)	0.3486 (2)	0.22725 (10)	0.0485 (5)
C3	0.20317 (17)	0.3192 (3)	0.20996 (12)	0.0563 (5)
H3	0.1718	0.2696	0.2486	0.068*
C4	0.13143 (16)	0.3665 (3)	0.13310 (13)	0.0540 (5)
C5	0.17475 (16)	0.4363 (3)	0.07450 (12)	0.0554 (5)
H5	0.1236	0.4666	0.0228	0.066*
C6	0.29653 (15)	0.4609 (2)	0.09396 (11)	0.0463 (4)
H6	0.3275	0.5068	0.0543	0.056*
C7	0.50387 (15)	0.4647 (2)	0.19524 (10)	0.0455 (4)
C8	0.57636 (13)	0.4110 (2)	0.14180 (9)	0.0380 (4)
C9	0.54142 (14)	0.2954 (2)	0.07984 (10)	0.0394 (4)
H9	0.4616	0.2613	0.0658	0.047*
C10	0.60984 (14)	0.2144 (2)	0.03078 (10)	0.0371 (4)
C11	0.54836 (15)	0.1629 (2)	-0.04971 (10)	0.0427 (4)
H11	0.4664	0.1823	-0.0707	0.051*
C12	0.60760 (17)	0.0835 (2)	-0.09852 (11)	0.0511 (5)
H12	0.5661	0.0534	-0.1527	0.061*
C13	0.72778 (18)	0.0488 (3)	-0.06717 (12)	0.0574 (5)
H13	0.7677	-0.0051	-0.1000	0.069*
C14	0.78932 (17)	0.0939 (3)	0.01321 (13)	0.0571 (5)
H14	0.8703	0.0677	0.0347	0.068*
C15	0.73151 (15)	0.1777 (2)	0.06192 (11)	0.0472 (4)
H15	0.7740	0.2096	0.1156	0.057*
C16	0.78369 (16)	0.4806 (3)	0.23361 (11)	0.0540 (5)

H16	0.7819	0.4182	0.2801	0.065*
C17	0.83462 (16)	0.6374 (3)	0.15148 (11)	0.0531 (5)
H17	0.8810	0.7101	0.1297	0.064*
F1	0.39533 (10)	0.30437 (19)	0.30320 (7)	0.0792 (4)
F2	0.01212 (10)	0.3410 (2)	0.11449 (8)	0.0874 (4)
N1	0.69278 (12)	0.48896 (18)	0.16383 (8)	0.0401 (3)
N2	0.72498 (12)	0.5930 (2)	0.10902 (9)	0.0479 (4)
N3	0.87605 (13)	0.5715 (2)	0.22846 (10)	0.0589 (4)
O1	0.55016 (12)	0.5454 (2)	0.25844 (8)	0.0737 (5)

*Atomic displacement parameters (Å<sup>2</sup>)*

	$U^{11}$	$U^{22}$	$U^{33}$	$U^{12}$	$U^{13}$	$U^{23}$
C1	0.0413 (9)	0.0420 (10)	0.0427 (9)	0.0005 (7)	0.0173 (8)	-0.0015 (8)
C2	0.0525 (11)	0.0558 (11)	0.0415 (10)	0.0108 (9)	0.0209 (9)	0.0054 (9)
C3	0.0586 (12)	0.0590 (12)	0.0646 (13)	0.0022 (9)	0.0386 (10)	0.0056 (10)
C4	0.0387 (10)	0.0577 (12)	0.0700 (13)	-0.0016 (9)	0.0232 (9)	-0.0048 (10)
C5	0.0458 (11)	0.0632 (13)	0.0541 (11)	0.0015 (9)	0.0110 (9)	0.0039 (10)
C6	0.0463 (10)	0.0495 (11)	0.0461 (10)	-0.0032 (8)	0.0187 (8)	0.0062 (8)
C7	0.0456 (10)	0.0500 (11)	0.0404 (9)	-0.0005 (8)	0.0128 (8)	-0.0037 (8)
C8	0.0351 (9)	0.0424 (9)	0.0352 (9)	-0.0025 (7)	0.0092 (7)	0.0018 (8)
C9	0.0360 (9)	0.0425 (10)	0.0397 (9)	-0.0043 (7)	0.0119 (7)	0.0036 (8)
C10	0.0390 (9)	0.0339 (9)	0.0392 (9)	-0.0049 (7)	0.0133 (7)	0.0017 (7)
C11	0.0425 (9)	0.0406 (10)	0.0432 (9)	-0.0066 (8)	0.0107 (8)	-0.0015 (8)
C12	0.0644 (12)	0.0473 (11)	0.0429 (10)	-0.0099 (9)	0.0188 (9)	-0.0077 (8)
C13	0.0660 (14)	0.0501 (12)	0.0645 (13)	-0.0019 (9)	0.0324 (11)	-0.0123 (10)
C14	0.0443 (10)	0.0554 (12)	0.0722 (13)	0.0062 (9)	0.0192 (10)	-0.0041 (11)
C15	0.0454 (10)	0.0488 (11)	0.0443 (10)	-0.0006 (8)	0.0094 (8)	-0.0027 (8)
C16	0.0474 (11)	0.0662 (13)	0.0409 (10)	-0.0057 (9)	0.0030 (8)	-0.0005 (9)
C17	0.0427 (10)	0.0596 (12)	0.0579 (12)	-0.0127 (9)	0.0170 (9)	-0.0074 (10)
F1	0.0713 (8)	0.1213 (11)	0.0491 (7)	0.0211 (7)	0.0247 (6)	0.0255 (7)
F2	0.0441 (7)	0.1161 (11)	0.1074 (10)	-0.0115 (7)	0.0313 (7)	-0.0038 (9)
N1	0.0364 (8)	0.0457 (8)	0.0359 (7)	-0.0048 (6)	0.0079 (6)	-0.0025 (6)
N2	0.0423 (8)	0.0544 (9)	0.0476 (9)	-0.0067 (7)	0.0148 (7)	0.0024 (7)
N3	0.0430 (9)	0.0758 (12)	0.0519 (10)	-0.0112 (8)	0.0060 (7)	-0.0113 (9)
O1	0.0555 (9)	0.1069 (12)	0.0594 (9)	-0.0111 (8)	0.0190 (7)	-0.0381 (9)

*Geometric parameters (Å, °)*

C1—C2	1.384 (2)	C10—C15	1.391 (2)
C1—C6	1.385 (2)	C10—C11	1.395 (2)
C1—C7	1.494 (2)	C11—C12	1.379 (2)
C2—F1	1.3521 (19)	C11—H11	0.9300
C2—C3	1.370 (2)	C12—C13	1.373 (3)
C3—C4	1.369 (3)	C12—H12	0.9300
C3—H3	0.9300	C13—C14	1.381 (3)
C4—F2	1.353 (2)	C13—H13	0.9300
C4—C5	1.362 (3)	C14—C15	1.381 (2)

C5—C6	1.379 (2)	C14—H14	0.9300
C5—H5	0.9300	C15—H15	0.9300
C6—H6	0.9300	C16—N3	1.312 (2)
C7—O1	1.212 (2)	C16—N1	1.332 (2)
C7—C8	1.485 (2)	C16—H16	0.9300
C8—C9	1.336 (2)	C17—N2	1.312 (2)
C8—N1	1.4302 (19)	C17—N3	1.348 (2)
C9—C10	1.464 (2)	C17—H17	0.9300
C9—H9	0.9300	N1—N2	1.3640 (19)
C2—C1—C6	116.68 (15)	C15—C10—C9	123.22 (15)
C2—C1—C7	121.38 (15)	C11—C10—C9	118.14 (14)
C6—C1—C7	121.63 (15)	C12—C11—C10	120.82 (16)
F1—C2—C3	117.62 (16)	C12—C11—H11	119.6
F1—C2—C1	118.97 (16)	C10—C11—H11	119.6
C3—C2—C1	123.41 (17)	C13—C12—C11	120.02 (17)
C4—C3—C2	116.88 (17)	C13—C12—H12	120.0
C4—C3—H3	121.6	C11—C12—H12	120.0
C2—C3—H3	121.6	C12—C13—C14	119.91 (17)
F2—C4—C5	118.67 (18)	C12—C13—H13	120.0
F2—C4—C3	118.26 (17)	C14—C13—H13	120.0
C5—C4—C3	123.06 (17)	C15—C14—C13	120.53 (17)
C4—C5—C6	118.19 (17)	C15—C14—H14	119.7
C4—C5—H5	120.9	C13—C14—H14	119.7
C6—C5—H5	120.9	C14—C15—C10	120.13 (16)
C5—C6—C1	121.76 (16)	C14—C15—H15	119.9
C5—C6—H6	119.1	C10—C15—H15	119.9
C1—C6—H6	119.1	N3—C16—N1	111.51 (17)
O1—C7—C8	119.98 (16)	N3—C16—H16	124.2
O1—C7—C1	120.11 (16)	N1—C16—H16	124.2
C8—C7—C1	119.91 (14)	N2—C17—N3	116.09 (17)
C9—C8—N1	120.88 (14)	N2—C17—H17	122.0
C9—C8—C7	124.84 (15)	N3—C17—H17	122.0
N1—C8—C7	114.23 (14)	C16—N1—N2	108.90 (14)
C8—C9—C10	129.73 (15)	C16—N1—C8	130.75 (15)
C8—C9—H9	115.1	N2—N1—C8	120.34 (12)
C10—C9—H9	115.1	C17—N2—N1	101.76 (14)
C15—C10—C11	118.54 (15)	C16—N3—C17	101.74 (15)
C6—C1—C2—F1	179.59 (16)	C7—C8—C9—C10	-170.57 (16)
C7—C1—C2—F1	-6.6 (3)	C8—C9—C10—C15	31.5 (3)
C6—C1—C2—C3	0.2 (3)	C8—C9—C10—C11	-152.16 (17)
C7—C1—C2—C3	173.98 (17)	C15—C10—C11—C12	-2.5 (2)
F1—C2—C3—C4	179.31 (17)	C9—C10—C11—C12	-179.05 (15)
C1—C2—C3—C4	-1.3 (3)	C10—C11—C12—C13	2.2 (3)
C2—C3—C4—F2	-179.28 (17)	C11—C12—C13—C14	-0.2 (3)
C2—C3—C4—C5	1.3 (3)	C12—C13—C14—C15	-1.5 (3)
F2—C4—C5—C6	-179.65 (17)	C13—C14—C15—C10	1.2 (3)

C3—C4—C5—C6	-0.3 (3)	C11—C10—C15—C14	0.8 (2)
C4—C5—C6—C1	-0.9 (3)	C9—C10—C15—C14	177.13 (16)
C2—C1—C6—C5	0.9 (3)	N3—C16—N1—N2	-0.9 (2)
C7—C1—C6—C5	-172.81 (17)	N3—C16—N1—C8	179.80 (16)
C2—C1—C7—O1	-46.0 (3)	C9—C8—N1—C16	-118.1 (2)
C6—C1—C7—O1	127.4 (2)	C7—C8—N1—C16	59.6 (2)
C2—C1—C7—C8	133.93 (18)	C9—C8—N1—N2	62.6 (2)
C6—C1—C7—C8	-52.6 (2)	C7—C8—N1—N2	-119.70 (16)
O1—C7—C8—C9	166.95 (18)	N3—C17—N2—N1	0.1 (2)
C1—C7—C8—C9	-13.0 (3)	C16—N1—N2—C17	0.46 (18)
O1—C7—C8—N1	-10.6 (2)	C8—N1—N2—C17	179.89 (15)
C1—C7—C8—N1	169.46 (14)	N1—C16—N3—C17	0.8 (2)
N1—C8—C9—C10	6.8 (3)	N2—C17—N3—C16	-0.5 (2)

*Hydrogen-bond geometry (Å, °)*

<i>D—H...A</i>	<i>D—H</i>	<i>H...A</i>	<i>D...A</i>	<i>D—H...A</i>
C15—H15...N1	0.93	2.56	3.048 (2)	113
C12—H12...N3 <sup>i</sup>	0.93	2.68	3.540 (2)	154
C17—H17...F1 <sup>ii</sup>	0.93	2.62	3.280 (2)	128

Symmetry codes: (i)  $x-1/2, -y+1/2, z-1/2$ ; (ii)  $-x+3/2, y+1/2, -z+1/2$ .