

Acta Crystallographica Section E

## Structure Reports

Online

ISSN 1600-5368

**(E)-3-Dimethylamino-1-(4-pyridyl)prop-2-en-1-one**

Lei Ni,\* Guo-Wei Zhu and Hong Wei

College of Chemistry and Biology, Beihua University, Jilin 132013, People's Republic of China

Correspondence e-mail: nilei\_bh@163.com

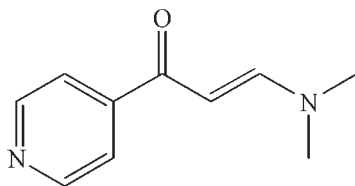
Received 9 July 2009; accepted 31 July 2009

Key indicators: single-crystal X-ray study;  $T = 294$  K; mean  $\sigma(\text{C}-\text{C}) = 0.002$  Å;  $R$  factor = 0.040;  $wR$  factor = 0.137; data-to-parameter ratio = 14.7.

The title compound,  $\text{C}_{10}\text{H}_{12}\text{N}_2\text{O}$ , is approximately planar, the r.m.s. deviation of the non-H atoms from the mean plane being 0.099 Å.

## Related literature

For an isomer of the title compound with the same space group and similar unit-cell parameters, see: Ni *et al.* (2009).



## Experimental

## Crystal data

 $\text{C}_{10}\text{H}_{12}\text{N}_2\text{O}$  $M_r = 176.22$ Monoclinic,  $P2_1/n$  $a = 5.6300$  (11) Å $b = 22.850$  (5) Å $c = 7.8400$  (16) Å $\beta = 107.57$  (3)° $V = 961.5$  (3) Å<sup>3</sup> $Z = 4$ Mo  $K\alpha$  radiation $\mu = 0.08$  mm<sup>-1</sup> $T = 294$  K $0.12 \times 0.10 \times 0.08$  mm

## Data collection

Bruker APEXII CCD diffractometer

Absorption correction: multi-scan (SADABS; Bruker, 2004)

 $T_{\min} = 0.990$ ,  $T_{\max} = 0.994$ 

5177 measured reflections

1784 independent reflections

1503 reflections with  $I > 2\sigma(I)$  $R_{\text{int}} = 0.022$ 

## Refinement

 $R[F^2 > 2\sigma(F^2)] = 0.040$  $wR(F^2) = 0.137$  $S = 1.00$ 

1784 reflections

121 parameters

H-atom parameters not refined

 $\Delta\rho_{\text{max}} = 0.20$  e Å<sup>-3</sup> $\Delta\rho_{\text{min}} = -0.13$  e Å<sup>-3</sup>

Data collection: APEX2 (Bruker, 2004); cell refinement: SAINT-Plus (Bruker, 2004); data reduction: SAINT-Plus; program(s) used to solve structure: SHELXS97 (Sheldrick, 2008); program(s) used to refine structure: SHELXL97 (Sheldrick, 2008); molecular graphics: SHELXTL (Sheldrick, 2008); software used to prepare material for publication: SHELXTL.

The authors acknowledge financial support from the Science Foundation of Beihua University.

Supplementary data and figures for this paper are available from the IUCr electronic archives (Reference: HB5024).

## References

- Bruker (2004). APEX2, SAINT-Plus and SADABS. Bruker AXS Inc., Madison, Wisconsin, USA.  
 Ni, L., Zhao, J.-L. & Wei, H. (2009). Acta Cryst. E65, o2103.  
 Sheldrick, G. M. (2008). Acta Cryst. A64, 112–122.

## supporting information

*Acta Cryst.* (2009). E65, o2104 [doi:10.1107/S1600536809030542]

**(E)-3-Dimethylamino-1-(4-pyridyl)prop-2-en-1-one**

Lei Ni, Guo-Wei Zhu and Hong Wei

**S1. Comment**

As part of our ongoing studies of heteroaromatic compounds (Ni *et al.*, 2009), we now report the synthesis and structure of the title compound, (I).

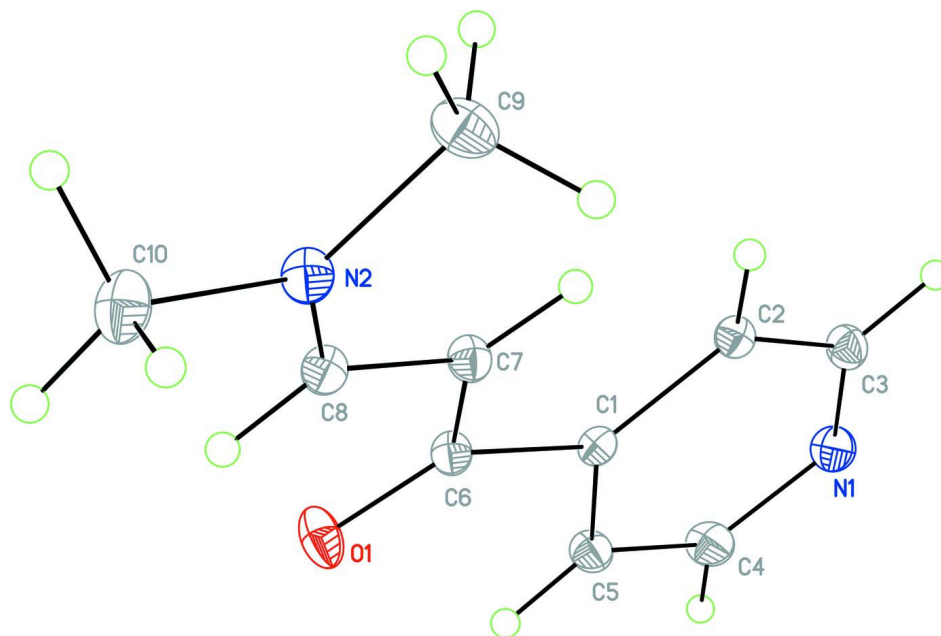
As shown in Fig. 1, non-hydrogen atoms including the pyridine ring, *N,N*-Dimethylamino, and prop-2-en-1-one are coplanar with the r.m.s deviation of the fitted atoms being 0.099 Å.

**S2. Experimental**

A mixture of 4-acetylpyridine(10 mmol) and *N,N*-dimethylformamide-dimethyl acetal(40 ml) was refluxed for four hours. After concentration *in vacuo*, recrystallization of the orange residue from ethanol afforded yellow blocks of (I). Anal. Calc. for C<sub>10</sub>H<sub>12</sub>N<sub>2</sub>O: C 68.10, H 6.81, N 15.89%; Found: C 68.05, H 6.69, N 15.81%.

**S3. Refinement**

All H atoms were geometrically positioned (C—H = 0.93–0.97Å) and refined as riding with  $U_{\text{iso}}(\text{H}) = 1.2U_{\text{eq}}(\text{C})$  or  $1.5U_{\text{eq}}(\text{methyl C})$ .



**Figure 1**

The molecular structure of (I), drawn with 30% probability displacement ellipsoids for the non-hydrogen atoms.

**(E)-3-Dimethylamino-1-(4-pyridyl)prop-2-en-1-one***Crystal data*C<sub>10</sub>H<sub>12</sub>N<sub>2</sub>O $M_r = 176.22$ Monoclinic,  $P2_1/n$ 

Hall symbol: -P 2yn

 $a = 5.6300$  (11) Å $b = 22.850$  (5) Å $c = 7.8400$  (16) Å $\beta = 107.57$  (3)° $V = 961.5$  (3) Å<sup>3</sup> $Z = 4$  $F(000) = 376$  $D_x = 1.217$  Mg m<sup>-3</sup>Mo  $K\alpha$  radiation,  $\lambda = 0.71073$  Å

Cell parameters from 1784 reflections

 $\theta = 1.8$ – $25.5$ ° $\mu = 0.08$  mm<sup>-1</sup> $T = 294$  K

Block, yellow

 $0.12 \times 0.10 \times 0.08$  mm*Data collection*

Bruker APEXII CCD

diffractometer

Radiation source: fine-focus sealed tube

Graphite monochromator

 $\varphi$  and  $\omega$  scans

Absorption correction: multi-scan

(SADABS; Bruker, 2004)

 $T_{\min} = 0.990$ ,  $T_{\max} = 0.994$ 

5177 measured reflections

1784 independent reflections

1503 reflections with  $I > 2\sigma(I)$  $R_{\text{int}} = 0.022$  $\theta_{\max} = 25.5$ °,  $\theta_{\min} = 1.8$ ° $h = -6 \rightarrow 6$  $k = -27 \rightarrow 26$  $l = -7 \rightarrow 9$ *Refinement*Refinement on  $F^2$ 

Least-squares matrix: full

 $R[F^2 > 2\sigma(F^2)] = 0.040$  $wR(F^2) = 0.137$  $S = 1.00$ 

1784 reflections

121 parameters

0 restraints

Primary atom site location: structure-invariant

direct methods

Secondary atom site location: difference Fourier

map

Hydrogen site location: inferred from

neighbouring sites

H-atom parameters not refined

 $w = 1/[\sigma^2(F_o^2) + (0.092P)^2 + 0.1151P]$ where  $P = (F_o^2 + 2F_c^2)/3$  $(\Delta/\sigma)_{\max} = 0.001$  $\Delta\rho_{\max} = 0.20$  e Å<sup>-3</sup> $\Delta\rho_{\min} = -0.13$  e Å<sup>-3</sup>Extinction correction: *SHELXL97* (Sheldrick,2008),  $F_c^* = kF_c[1 + 0.001x F_c^2 \lambda^3 / \sin(2\theta)]^{-1/4}$ 

Extinction coefficient: 0.016 (6)

*Special details*

**Geometry.** All e.s.d.'s (except the e.s.d. in the dihedral angle between two l.s. planes) are estimated using the full covariance matrix. The cell e.s.d.'s are taken into account individually in the estimation of e.s.d.'s in distances, angles and torsion angles; correlations between e.s.d.'s in cell parameters are only used when they are defined by crystal symmetry. An approximate (isotropic) treatment of cell e.s.d.'s is used for estimating e.s.d.'s involving l.s. planes.

**Refinement.** Refinement of  $F^2$  against ALL reflections. The weighted  $R$ -factor  $wR$  and goodness of fit  $S$  are based on  $F^2$ , conventional  $R$ -factors  $R$  are based on  $F$ , with  $F$  set to zero for negative  $F^2$ . The threshold expression of  $F^2 > \sigma(F^2)$  is used only for calculating  $R$ -factors(gt) *etc.* and is not relevant to the choice of reflections for refinement.  $R$ -factors based on  $F^2$  are statistically about twice as large as those based on  $F$ , and  $R$ -factors based on ALL data will be even larger.

*Fractional atomic coordinates and isotropic or equivalent isotropic displacement parameters (Å<sup>2</sup>)*

	$x$	$y$	$z$	$U_{\text{iso}}^*/U_{\text{eq}}$
C1	0.8254 (2)	0.15312 (5)	0.68372 (16)	0.0403 (3)
C2	0.6652 (3)	0.20055 (6)	0.65592 (17)	0.0451 (4)
H2	0.5490	0.2036	0.7183	0.054*

C3	0.6795 (3)	0.24329 (7)	0.5346 (2)	0.0541 (4)
H3	0.5698	0.2747	0.5180	0.065*
C4	0.9907 (3)	0.19670 (8)	0.4672 (2)	0.0634 (5)
H4	1.1040	0.1947	0.4022	0.076*
C5	0.9919 (3)	0.15168 (7)	0.5851 (2)	0.0533 (4)
H5	1.1034	0.1208	0.5980	0.064*
C6	0.8303 (2)	0.10391 (6)	0.81421 (18)	0.0441 (4)
C7	0.6972 (2)	0.11110 (6)	0.94016 (18)	0.0452 (4)
H7	0.6012	0.1444	0.9377	0.054*
C8	0.7118 (3)	0.06832 (6)	1.06560 (18)	0.0453 (4)
H8	0.8147	0.0367	1.0632	0.054*
C9	0.4227 (3)	0.11224 (8)	1.2011 (2)	0.0668 (5)
H9A	0.5085	0.1490	1.2271	0.100*
H9B	0.3519	0.1028	1.2948	0.100*
H9C	0.2924	0.1150	1.0894	0.100*
C10	0.6374 (3)	0.01980 (7)	1.3199 (2)	0.0641 (5)
H10A	0.7505	-0.0083	1.2966	0.096*
H10B	0.4815	0.0011	1.3112	0.096*
H10C	0.7069	0.0355	1.4380	0.096*
N1	0.8397 (3)	0.24245 (6)	0.44017 (18)	0.0617 (4)
N2	0.5966 (2)	0.06690 (5)	1.18924 (16)	0.0494 (4)
O1	0.9520 (2)	0.05981 (5)	0.80351 (16)	0.0677 (4)

*Atomic displacement parameters (Å<sup>2</sup>)*

	$U^{11}$	$U^{22}$	$U^{33}$	$U^{12}$	$U^{13}$	$U^{23}$
C1	0.0414 (7)	0.0407 (7)	0.0388 (7)	-0.0052 (5)	0.0120 (5)	-0.0024 (5)
C2	0.0477 (7)	0.0453 (8)	0.0433 (7)	-0.0010 (6)	0.0153 (6)	-0.0018 (6)
C3	0.0581 (9)	0.0476 (8)	0.0541 (9)	0.0035 (6)	0.0131 (7)	0.0068 (6)
C4	0.0583 (9)	0.0715 (11)	0.0699 (10)	0.0001 (8)	0.0337 (8)	0.0178 (8)
C5	0.0500 (8)	0.0541 (9)	0.0623 (9)	0.0035 (6)	0.0268 (7)	0.0092 (7)
C6	0.0480 (7)	0.0410 (7)	0.0460 (7)	0.0005 (5)	0.0184 (6)	0.0004 (6)
C7	0.0498 (7)	0.0429 (7)	0.0467 (7)	0.0020 (6)	0.0202 (6)	0.0009 (5)
C8	0.0499 (8)	0.0442 (8)	0.0460 (8)	-0.0016 (6)	0.0210 (6)	-0.0037 (6)
C9	0.0651 (10)	0.0810 (12)	0.0631 (10)	0.0146 (8)	0.0326 (8)	0.0008 (8)
C10	0.0914 (12)	0.0553 (9)	0.0583 (9)	-0.0050 (8)	0.0415 (9)	0.0036 (7)
N1	0.0633 (8)	0.0598 (8)	0.0646 (8)	-0.0018 (6)	0.0232 (7)	0.0176 (6)
N2	0.0576 (7)	0.0507 (7)	0.0476 (7)	0.0002 (5)	0.0274 (6)	0.0012 (5)
O1	0.0928 (9)	0.0519 (7)	0.0772 (8)	0.0237 (6)	0.0538 (7)	0.0171 (5)

*Geometric parameters (Å, °)*

C1—C2	1.3846 (18)	C7—C8	1.3713 (19)
C1—C5	1.3842 (19)	C7—H7	0.9300
C1—C6	1.5148 (18)	C8—N2	1.3193 (17)
C2—C3	1.382 (2)	C8—H8	0.9300
C2—H2	0.9300	C9—N2	1.4476 (19)
C3—N1	1.329 (2)	C9—H9A	0.9600

---

C3—H3	0.9300	C9—H9B	0.9600
C4—N1	1.323 (2)	C9—H9C	0.9600
C4—C5	1.382 (2)	C10—N2	1.4555 (19)
C4—H4	0.9300	C10—H10A	0.9600
C5—H5	0.9300	C10—H10B	0.9600
C6—O1	1.2357 (16)	C10—H10C	0.9600
C6—C7	1.4180 (18)		
C2—C1—C5	116.72 (12)	C6—C7—H7	120.4
C2—C1—C6	124.44 (12)	N2—C8—C7	127.45 (13)
C5—C1—C6	118.84 (12)	N2—C8—H8	116.3
C1—C2—C3	119.39 (13)	C7—C8—H8	116.3
C1—C2—H2	120.3	N2—C9—H9A	109.5
C3—C2—H2	120.3	N2—C9—H9B	109.5
N1—C3—C2	124.31 (14)	H9A—C9—H9B	109.5
N1—C3—H3	117.8	N2—C9—H9C	109.5
C2—C3—H3	117.8	H9A—C9—H9C	109.5
N1—C4—C5	124.67 (14)	H9B—C9—H9C	109.5
N1—C4—H4	117.7	N2—C10—H10A	109.5
C5—C4—H4	117.7	N2—C10—H10B	109.5
C4—C5—C1	119.24 (14)	H10A—C10—H10B	109.5
C4—C5—H5	120.4	N2—C10—H10C	109.5
C1—C5—H5	120.4	H10A—C10—H10C	109.5
O1—C6—C7	124.21 (12)	H10B—C10—H10C	109.5
O1—C6—C1	117.19 (12)	C4—N1—C3	115.67 (13)
C7—C6—C1	118.60 (11)	C8—N2—C9	121.45 (12)
C8—C7—C6	119.15 (12)	C8—N2—C10	121.81 (13)
C8—C7—H7	120.4	C9—N2—C10	116.74 (12)

---