

Acta Crystallographica Section E

Structure Reports

Online

ISSN 1600-5368

Bis[4-(dimethylamino)pyridinium] tetra-bromidobis(4-methylphenyl)stannate(IV)

See Mun Lee, Kong Mun Lo,* Hapipah Mohd Ali and Ward T. Robinson

Department of Chemistry, University of Malaya, 50603 Kuala Lumpur, Malaysia
Correspondence e-mail: kmlo@um.edu.my

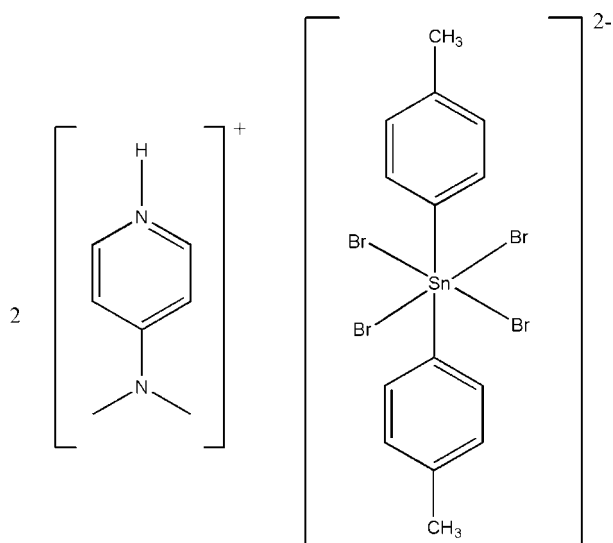
Received 8 June 2009; accepted 30 July 2009

Key indicators: single-crystal X-ray study; $T = 100$ K; mean $\sigma(\text{C}-\text{C}) = 0.003$ Å; R factor = 0.018; wR factor = 0.045; data-to-parameter ratio = 20.8.

In the title compound, $(\text{C}_7\text{H}_{11}\text{N}_2)_2[\text{SnBr}_4(\text{C}_7\text{H}_7)_2]$, the tetra-bromidobis(4-methylphenyl)stannate(IV) anion possesses a centre of inversion located at the Sn^{IV} atom. In the crystal structure, two inversion-related cations are linked to the anion *via* weak $\text{N}-\text{H}\cdots\text{Br}$ hydrogen bonds.

Related literature

For related crystal structures, see Lo & Ng (2009); Koon *et al.* (2009); Yap *et al.* (2008).



Experimental

Crystal data

$(\text{C}_7\text{H}_{11}\text{N}_2)_2[\text{SnBr}_4(\text{C}_7\text{H}_7)_2]$
 $M_r = 866.94$
Monoclinic, $P2_1/n$
 $a = 10.2178$ (3) Å
 $b = 10.4808$ (3) Å
 $c = 14.5833$ (3) Å
 $\beta = 95.063$ (1)°

$V = 1555.64$ (7) Å³
 $Z = 2$
Mo $K\alpha$ radiation
 $\mu = 5.98$ mm⁻¹
 $T = 100$ K
 $0.35 \times 0.30 \times 0.22$ mm

Data collection

Bruker APEXII CCD area-detector diffractometer
Absorption correction: multi-scan (SADABS; Sheldrick, 1996)
 $T_{\text{min}} = 0.229$, $T_{\text{max}} = 0.353$
(expected range = 0.174–0.268)

11555 measured reflections
3569 independent reflections
3225 reflections with $I > 2\sigma(I)$
 $R_{\text{int}} = 0.019$

Refinement

$R[F^2 > 2\sigma(F^2)] = 0.018$
 $wR(F^2) = 0.045$
 $S = 1.05$
3569 reflections

172 parameters
H-atom parameters constrained
 $\Delta\rho_{\text{max}} = 0.44$ e Å⁻³
 $\Delta\rho_{\text{min}} = -0.45$ e Å⁻³

Table 1

Hydrogen-bond geometry (Å, °).

$D-\text{H}\cdots A$	$D-\text{H}$	$\text{H}\cdots A$	$D\cdots A$	$D-\text{H}\cdots A$
$\text{N1}-\text{H1}\cdots\text{Br1}^i$	0.88	2.75	3.448 (2)	138
$\text{N1}-\text{H1}\cdots\text{Br2}^i$	0.88	2.94	3.517 (2)	125

Symmetry code: (i) $x - 1, y + 1, z$.

Data collection: APEX2 (Bruker, 2008); cell refinement: SAINT (Bruker, 2008); data reduction: SAINT; program(s) used to solve structure: SHELXS97 (Sheldrick, 2008); program(s) used to refine structure: SHELXL97 (Sheldrick, 2008); molecular graphics: SHELXTL (Sheldrick, 2008); software used to prepare material for publication: publCIF (Westrip, 2009).

We thank the University of Malaya (grant No. PS072/2007C and PS320/2008C) for supporting this study.

Supplementary data and figures for this paper are available from the IUCr electronic archives (Reference: LH2842).

References

- Bruker (2008). APEX2 and SAINT. Bruker AXS Inc., Madison, Wisconsin, USA.
Koon, Y. C., Lo, K. M. & Ng, S. W. (2009). *Acta Cryst.* E65, m663.
Lo, K. M. & Ng, S. W. (2009). *Acta Cryst.* E65, m630.
Sheldrick, G. M. (1996). SADABS. University of Göttingen, Germany.
Sheldrick, G. M. (2008). *Acta Cryst.* A64, 112–122.
Westrip, S. P. (2009). publCIF. In preparation.
Yap, Q. L., Lo, K. M. & Ng, S. W. (2008). *Acta Cryst.* E64, m696.

supporting information

Acta Cryst. (2009). E65, m1040 [doi:10.1107/S1600536809030323]

Bis[4-(dimethylamino)pyridinium] tetrabromidobis(4-methylphenyl)stannate(IV)

See Mun Lee, Kong Mun Lo, Hapipah Mohd Ali and Ward T. Robinson

S1. Comment

The molecular structure of the title compound is shown in Fig. 1.

S2. Experimental

Tetra(4-methylphenyl)tin (0.49 g, 1 mmol) and 4-dimethylaminopyridine hydrobromide perbromide (0.40 g, 1 mmol) were dissolved in absolute ethanol (25 ml) and refluxed for six hours. The solution was filtered and colourless crystals were isolated upon cooling to room temperature.

S3. Refinement

Hydrogen atoms were placed at calculated positions (C—H 0.95 to 0.98 Å) and were treated as riding on their parent carbon atoms, with $U(\text{H})$ set to 1.2–1.5 times $U(\text{C}, \text{N})$. N—H was refined and placed in the calculated position of N—H 0.88 ± 0.01 Å.

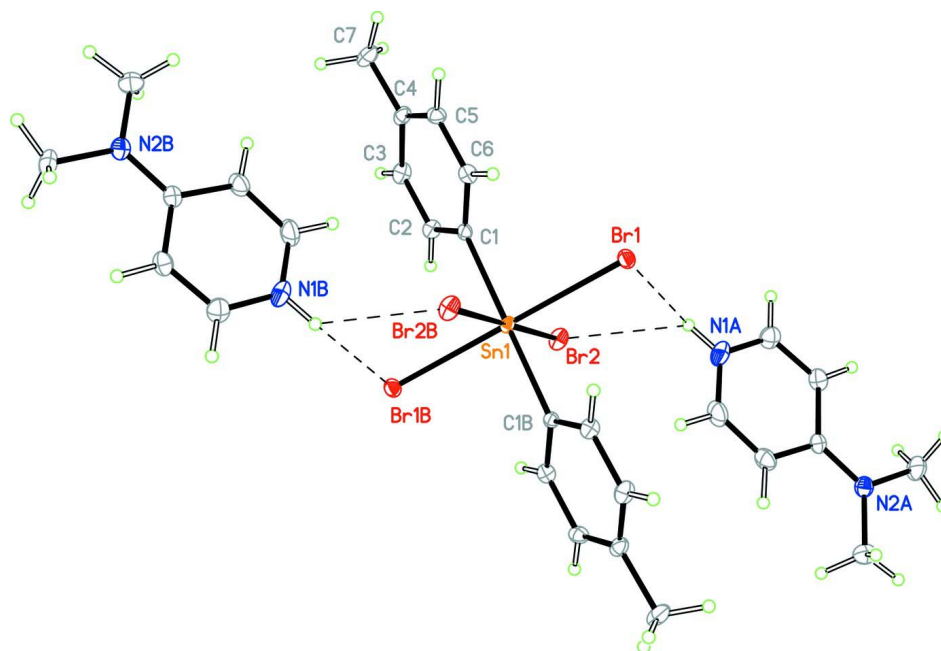


Figure 1

The molecular structure of the title compound with 50% probability displacement ellipsoids and the atom numbering.

Hydrogen atoms are drawn as spheres of arbitrary radius and dashed lines indicate hydrogen bonds (symmetry codes: (A) $1+x, -1+y, z$ and (B) $2-x, -y, -z$).

Bis[4-(dimethylamino)pyridinium] tetrabromidobis(4-methylphenyl)stannate(IV)*Crystal data* $(C_7H_{11}N_2)_2[SnBr_4(C_7H_7)_2]$ $M_r = 866.94$ Monoclinic, $P2_1/n$

Hall symbol: -P 2yn

 $a = 10.2178 (3) \text{ \AA}$ $b = 10.4808 (3) \text{ \AA}$ $c = 14.5833 (3) \text{ \AA}$ $\beta = 95.063 (1)^\circ$ $V = 1555.64 (7) \text{ \AA}^3$ $Z = 2$ $F(000) = 844$ $D_x = 1.851 \text{ Mg m}^{-3}$ Mo $K\alpha$ radiation, $\lambda = 0.71073 \text{ \AA}$

Cell parameters from 6698 reflections

 $\theta = 2.3\text{--}30.5^\circ$ $\mu = 5.98 \text{ mm}^{-1}$ $T = 100 \text{ K}$

Block, colourless

 $0.35 \times 0.30 \times 0.22 \text{ mm}$ *Data collection*Bruker APEXII CCD area-detector
diffractometer

Radiation source: fine-focus sealed tube

Graphite monochromator

 ω scansAbsorption correction: multi-scan
(*SADABS*; Sheldrick, 1996) $T_{\min} = 0.229$, $T_{\max} = 0.353$

11555 measured reflections

3569 independent reflections

3225 reflections with $I > 2\sigma(I)$ $R_{\text{int}} = 0.019$ $\theta_{\max} = 27.5^\circ$, $\theta_{\min} = 2.3^\circ$ $h = -13 \rightarrow 10$ $k = -13 \rightarrow 8$ $l = -18 \rightarrow 18$ *Refinement*Refinement on F^2

Least-squares matrix: full

 $R[F^2 > 2\sigma(F^2)] = 0.018$ $wR(F^2) = 0.045$ $S = 1.05$

3569 reflections

172 parameters

0 restraints

Primary atom site location: structure-invariant
direct methodsSecondary atom site location: difference Fourier
mapHydrogen site location: inferred from
neighbouring sites

H-atom parameters constrained

 $w = 1/[\sigma^2(F_o^2) + (0.0246P)^2 + 0.5727P]$ where $P = (F_o^2 + 2F_c^2)/3$ $(\Delta/\sigma)_{\max} = 0.001$ $\Delta\rho_{\max} = 0.44 \text{ e \AA}^{-3}$ $\Delta\rho_{\min} = -0.45 \text{ e \AA}^{-3}$ *Special details*

Geometry. All e.s.d.'s (except the e.s.d. in the dihedral angle between two l.s. planes) are estimated using the full covariance matrix. The cell e.s.d.'s are taken into account individually in the estimation of e.s.d.'s in distances, angles and torsion angles; correlations between e.s.d.'s in cell parameters are only used when they are defined by crystal symmetry. An approximate (isotropic) treatment of cell e.s.d.'s is used for estimating e.s.d.'s involving l.s. planes.

Refinement. Refinement of F^2 against ALL reflections. The weighted R -factor wR and goodness of fit S are based on F^2 , conventional R -factors R are based on F , with F set to zero for negative F^2 . The threshold expression of $F^2 > \sigma(F^2)$ is used only for calculating R -factors(gt) *etc.* and is not relevant to the choice of reflections for refinement. R -factors based on F^2 are statistically about twice as large as those based on F , and R -factors based on ALL data will be even larger.

Fractional atomic coordinates and isotropic or equivalent isotropic displacement parameters (\AA^2)

	<i>x</i>	<i>y</i>	<i>z</i>	$U_{\text{iso}}^*/U_{\text{eq}}$
Sn1	1.0000	0.0000	0.0000	0.01042 (5)
Br1	0.951470 (19)	-0.180492 (17)	0.131083 (12)	0.01383 (5)
Br2	1.261950 (18)	-0.018292 (18)	0.055861 (14)	0.01597 (6)
N1	0.24150 (18)	0.65685 (17)	0.11335 (13)	0.0237 (4)

H1	0.2028	0.7281	0.1280	0.028*
N2	0.43055 (16)	0.33066 (16)	0.04249 (11)	0.0166 (3)
C1	0.98097 (18)	0.15055 (17)	0.09731 (12)	0.0106 (3)
C2	1.06827 (19)	0.25260 (18)	0.10370 (13)	0.0140 (4)
H2	1.1417	0.2527	0.0680	0.017*
C3	1.04872 (19)	0.35431 (19)	0.16189 (13)	0.0158 (4)
H3	1.1089	0.4236	0.1651	0.019*
C4	0.94235 (19)	0.35675 (19)	0.21573 (13)	0.0148 (4)
C5	0.85693 (19)	0.25278 (19)	0.21028 (13)	0.0142 (4)
H5	0.7847	0.2514	0.2471	0.017*
C6	0.87603 (18)	0.15088 (18)	0.15165 (12)	0.0136 (4)
H6	0.8167	0.0809	0.1488	0.016*
C7	0.9200 (2)	0.46954 (19)	0.27623 (15)	0.0204 (4)
H7A	0.8970	0.5443	0.2377	0.031*
H7B	1.0004	0.4873	0.3160	0.031*
H7C	0.8482	0.4506	0.3144	0.031*
C8	0.2184 (2)	0.6093 (2)	0.02768 (15)	0.0249 (5)
H8	0.1593	0.6526	-0.0157	0.030*
C9	0.2777 (2)	0.5010 (2)	0.00204 (15)	0.0201 (4)
H9	0.2596	0.4687	-0.0586	0.024*
C10	0.36716 (18)	0.43551 (18)	0.06587 (13)	0.0131 (4)
C11	0.3857 (2)	0.48772 (18)	0.15624 (14)	0.0171 (4)
H11	0.4421	0.4461	0.2022	0.021*
C12	0.3229 (2)	0.5969 (2)	0.17697 (14)	0.0202 (4)
H12	0.3367	0.6314	0.2373	0.024*
C13	0.4097 (2)	0.2765 (2)	-0.05001 (14)	0.0208 (4)
H13A	0.3200	0.2431	-0.0599	0.031*
H13B	0.4726	0.2072	-0.0565	0.031*
H13C	0.4225	0.3430	-0.0956	0.031*
C14	0.5171 (2)	0.2619 (2)	0.11039 (15)	0.0249 (5)
H14A	0.5837	0.3204	0.1387	0.037*
H14B	0.5603	0.1920	0.0801	0.037*
H14C	0.4653	0.2270	0.1580	0.037*

Atomic displacement parameters (\AA^2)

	U^{11}	U^{22}	U^{33}	U^{12}	U^{13}	U^{23}
Sn1	0.01059 (9)	0.00929 (9)	0.01105 (9)	0.00024 (6)	-0.00081 (6)	-0.00130 (6)
Br1	0.01585 (10)	0.01282 (10)	0.01285 (9)	-0.00079 (7)	0.00140 (7)	0.00179 (7)
Br2	0.01007 (10)	0.01519 (10)	0.02186 (11)	0.00061 (7)	-0.00312 (7)	-0.00193 (7)
N1	0.0260 (10)	0.0161 (9)	0.0291 (10)	0.0075 (7)	0.0021 (8)	0.0008 (7)
N2	0.0155 (8)	0.0160 (8)	0.0179 (8)	0.0010 (7)	-0.0002 (6)	0.0011 (7)
C1	0.0124 (9)	0.0099 (8)	0.0091 (8)	0.0006 (7)	-0.0018 (7)	-0.0002 (7)
C2	0.0120 (9)	0.0134 (9)	0.0165 (9)	-0.0010 (7)	0.0013 (7)	-0.0003 (7)
C3	0.0139 (9)	0.0119 (9)	0.0210 (10)	-0.0036 (7)	-0.0009 (7)	-0.0015 (7)
C4	0.0157 (9)	0.0137 (9)	0.0143 (9)	0.0041 (8)	-0.0027 (7)	-0.0022 (7)
C5	0.0119 (9)	0.0185 (10)	0.0124 (9)	0.0022 (7)	0.0024 (7)	0.0002 (7)
C6	0.0126 (9)	0.0143 (9)	0.0136 (9)	-0.0019 (7)	-0.0006 (7)	0.0005 (7)

C7	0.0218 (11)	0.0158 (10)	0.0232 (10)	0.0042 (8)	0.0005 (8)	-0.0068 (8)
C8	0.0252 (11)	0.0265 (12)	0.0225 (11)	0.0073 (9)	-0.0016 (9)	0.0083 (9)
C9	0.0193 (11)	0.0246 (11)	0.0157 (10)	0.0023 (8)	-0.0021 (8)	0.0035 (8)
C10	0.0110 (9)	0.0119 (9)	0.0165 (9)	-0.0037 (7)	0.0011 (7)	0.0020 (7)
C11	0.0153 (10)	0.0175 (10)	0.0177 (10)	-0.0019 (8)	-0.0035 (8)	0.0019 (8)
C12	0.0208 (11)	0.0179 (10)	0.0214 (10)	-0.0019 (8)	-0.0012 (8)	-0.0016 (8)
C13	0.0203 (11)	0.0228 (11)	0.0194 (10)	-0.0016 (9)	0.0025 (8)	-0.0038 (8)
C14	0.0275 (12)	0.0205 (11)	0.0259 (11)	0.0108 (9)	-0.0016 (9)	0.0030 (9)

Geometric parameters (Å, °)

Sn1—C1 ⁱ	2.1424 (18)	C5—C6	1.393 (3)
Sn1—C1	2.1424 (18)	C5—H5	0.9500
Sn1—Br2 ⁱ	2.7349 (2)	C6—H6	0.9500
Sn1—Br2	2.7349 (2)	C7—H7A	0.9800
Sn1—Br1	2.7652 (2)	C7—H7B	0.9800
Sn1—Br1 ⁱ	2.7652 (2)	C7—H7C	0.9800
N1—C12	1.346 (3)	C8—C9	1.356 (3)
N1—C8	1.346 (3)	C8—H8	0.9500
N1—H1	0.8800	C9—C10	1.422 (3)
N2—C10	1.335 (2)	C9—H9	0.9500
N2—C14	1.459 (3)	C10—C11	1.424 (3)
N2—C13	1.462 (3)	C11—C12	1.359 (3)
C1—C6	1.388 (3)	C11—H11	0.9500
C1—C2	1.391 (3)	C12—H12	0.9500
C2—C3	1.388 (3)	C13—H13A	0.9800
C2—H2	0.9500	C13—H13B	0.9800
C3—C4	1.396 (3)	C13—H13C	0.9800
C3—H3	0.9500	C14—H14A	0.9800
C4—C5	1.394 (3)	C14—H14B	0.9800
C4—C7	1.504 (3)	C14—H14C	0.9800
C1 ⁱ —Sn1—C1	180.00 (13)	C1—C6—C5	120.63 (18)
C1 ⁱ —Sn1—Br2 ⁱ	89.88 (5)	C1—C6—H6	119.7
C1—Sn1—Br2 ⁱ	90.12 (5)	C5—C6—H6	119.7
C1 ⁱ —Sn1—Br2	90.12 (5)	C4—C7—H7A	109.5
C1—Sn1—Br2	89.88 (5)	C4—C7—H7B	109.5
Br2 ⁱ —Sn1—Br2	180.000 (12)	H7A—C7—H7B	109.5
C1 ⁱ —Sn1—Br1	89.22 (5)	C4—C7—H7C	109.5
C1—Sn1—Br1	90.78 (5)	H7A—C7—H7C	109.5
Br2 ⁱ —Sn1—Br1	91.340 (6)	H7B—C7—H7C	109.5
Br2—Sn1—Br1	88.660 (6)	N1—C8—C9	121.3 (2)
C1 ⁱ —Sn1—Br1 ⁱ	90.78 (5)	N1—C8—H8	119.3
C1—Sn1—Br1 ⁱ	89.22 (5)	C9—C8—H8	119.3
Br2 ⁱ —Sn1—Br1 ⁱ	88.660 (6)	C8—C9—C10	120.1 (2)
Br2—Sn1—Br1 ⁱ	91.340 (6)	C8—C9—H9	120.0
Br1—Sn1—Br1 ⁱ	180.000 (10)	C10—C9—H9	120.0
C12—N1—C8	120.94 (19)	N2—C10—C9	121.88 (18)

C12—N1—H1	119.5	N2—C10—C11	121.65 (18)
C8—N1—H1	119.5	C9—C10—C11	116.47 (18)
C10—N2—C14	120.81 (17)	C12—C11—C10	120.16 (19)
C10—N2—C13	121.38 (17)	C12—C11—H11	119.9
C14—N2—C13	117.71 (17)	C10—C11—H11	119.9
C6—C1—C2	118.88 (17)	N1—C12—C11	121.0 (2)
C6—C1—Sn1	119.98 (13)	N1—C12—H12	119.5
C2—C1—Sn1	121.04 (13)	C11—C12—H12	119.5
C3—C2—C1	120.37 (17)	N2—C13—H13A	109.5
C3—C2—H2	119.8	N2—C13—H13B	109.5
C1—C2—H2	119.8	H13A—C13—H13B	109.5
C2—C3—C4	121.28 (18)	N2—C13—H13C	109.5
C2—C3—H3	119.4	H13A—C13—H13C	109.5
C4—C3—H3	119.4	H13B—C13—H13C	109.5
C5—C4—C3	117.91 (17)	N2—C14—H14A	109.5
C5—C4—C7	121.42 (17)	N2—C14—H14B	109.5
C3—C4—C7	120.66 (18)	H14A—C14—H14B	109.5
C6—C5—C4	120.90 (17)	N2—C14—H14C	109.5
C6—C5—H5	119.5	H14A—C14—H14C	109.5
C4—C5—H5	119.5	H14B—C14—H14C	109.5
C1 ⁱ —Sn1—C1—C6	0.00 (18)	C7—C4—C5—C6	177.77 (18)
Br2 ⁱ —Sn1—C1—C6	44.67 (14)	C2—C1—C6—C5	1.2 (3)
Br2—Sn1—C1—C6	-135.33 (14)	Sn1—C1—C6—C5	-175.23 (14)
Br1—Sn1—C1—C6	-46.67 (14)	C4—C5—C6—C1	0.1 (3)
Br1 ⁱ —Sn1—C1—C6	133.33 (14)	C12—N1—C8—C9	-1.1 (3)
C1 ⁱ —Sn1—C1—C2	0.00 (7)	N1—C8—C9—C10	-0.4 (3)
Br2 ⁱ —Sn1—C1—C2	-131.72 (15)	C14—N2—C10—C9	-177.10 (19)
Br2—Sn1—C1—C2	48.28 (15)	C13—N2—C10—C9	-0.9 (3)
Br1—Sn1—C1—C2	136.94 (15)	C14—N2—C10—C11	2.9 (3)
Br1 ⁱ —Sn1—C1—C2	-43.06 (15)	C13—N2—C10—C11	179.12 (18)
C6—C1—C2—C3	-1.5 (3)	C8—C9—C10—N2	-178.0 (2)
Sn1—C1—C2—C3	174.92 (14)	C8—C9—C10—C11	2.0 (3)
C1—C2—C3—C4	0.5 (3)	N2—C10—C11—C12	177.86 (18)
C2—C3—C4—C5	0.9 (3)	C9—C10—C11—C12	-2.1 (3)
C2—C3—C4—C7	-178.05 (19)	C8—N1—C12—C11	1.0 (3)
C3—C4—C5—C6	-1.1 (3)	C10—C11—C12—N1	0.7 (3)

Symmetry code: (i) $-x+2, -y, -z$.

Hydrogen-bond geometry (\AA , $^\circ$)

<i>D</i> —H \cdots <i>A</i>	<i>D</i> —H	H \cdots <i>A</i>	<i>D</i> \cdots <i>A</i>	<i>D</i> —H \cdots <i>A</i>
N1—H1 \cdots Br1 ⁱⁱ	0.88	2.75	3.448 (2)	138
N1—H1 \cdots Br2 ⁱⁱ	0.88	2.94	3.517 (2)	125

Symmetry code: (ii) $x-1, y+1, z$.