

Acta Crystallographica Section E

## Structure Reports

Online

ISSN 1600-5368

## 6-Ethyl-5-fluoro-2-methoxypyrimidin-4(3H)-one

Yu-Yuan Ye<sup>a\*</sup> and Kai Yang<sup>b</sup>

<sup>a</sup>School of Life Science and Pharmaceutical and Chemical Engineering, Taizhou University, Linhai 317000, People's Republic of China, and <sup>b</sup>College of Biological and Environmental Engineering, Zhejiang University of Technology, Hangzhou 310014, People's Republic of China

Correspondence e-mail: yeyuyuan@163.com

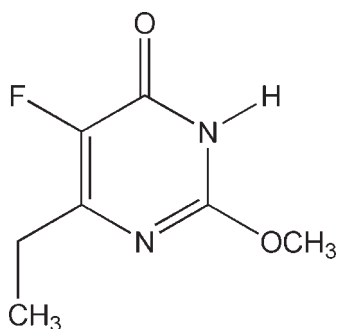
Received 23 August 2009; accepted 2 September 2009

Key indicators: single-crystal X-ray study;  $T = 296$  K; mean  $\sigma(\text{C}-\text{C}) = 0.003$  Å;  $R$  factor = 0.047;  $wR$  factor = 0.106; data-to-parameter ratio = 16.6.

In the title compound,  $\text{C}_7\text{H}_9\text{FN}_2\text{O}_2$ , the methoxy and ethyl groups form dihedral angles of  $1.4$  (2) and  $73.5$  (3)°, respectively, with the mean plane of the pyrimidine ring. In the crystal structure, two molecules are linked by a pair of  $\text{N}-\text{H}\cdots\text{O}$  hydrogen bonds, forming a centrosymmetric dimer.

## Related literature

For fluoro-containing pyrimidines as intermediates for the synthesis of some anticancer and antifungal drugs, see: Bergmann *et al.* (1959); Butters *et al.* (2001).



## Experimental

## Crystal data

$\text{C}_7\text{H}_9\text{FN}_2\text{O}_2$   
 $M_r = 172.16$   
 Triclinic,  $P\bar{1}$   
 $a = 4.5711$  (4) Å  
 $b = 8.4985$  (8) Å  
 $c = 10.8546$  (11) Å  
 $\alpha = 88.043$  (2)°  
 $\beta = 79.737$  (3)°  
 $\gamma = 79.616$  (2)°  
 $V = 408.13$  (7) Å<sup>3</sup>  
 $Z = 2$   
 Mo  $K\alpha$  radiation  
 $\mu = 0.12$  mm<sup>-1</sup>  
 $T = 296$  K  
 $0.40 \times 0.28 \times 0.18$  mm

## Data collection

Rigaku R-Axis RAPID diffractometer  
 Absorption correction: multi-scan (ABSCOR; Higashi, 1995)  
 $T_{\min} = 0.948$ ,  $T_{\max} = 0.979$   
 4010 measured reflections  
 1842 independent reflections  
 945 reflections with  $I > 2\sigma(I)$   
 $R_{\text{int}} = 0.019$

## Refinement

$R[F^2 > 2\sigma(F^2)] = 0.047$   
 $wR(F^2) = 0.106$   
 $S = 1.00$   
 1842 reflections  
 111 parameters  
 H-atom parameters constrained  
 $\Delta\rho_{\max} = 0.39$  e Å<sup>-3</sup>  
 $\Delta\rho_{\min} = -0.37$  e Å<sup>-3</sup>

Table 1

Hydrogen-bond geometry (Å, °).

| $D-H\cdots A$                          | $D-H$ | $H\cdots A$ | $D\cdots A$ | $D-H\cdots A$ |
|--|-------|-------------|-------------|---------------|
| $\text{N1}-\text{H1}\cdots\text{O2}^i$ | 0.86  | 1.91        | 2.763 (2)   | 174           |

Symmetry code: (i)  $-x + 1, -y + 1, -z + 1$ .

Data collection: *PROCESS-AUTO* (Rigaku/MSC, 2004); cell refinement: *PROCESS-AUTO*; data reduction: *CrystalStructure* (Rigaku/MSC, 2004); program(s) used to solve structure: *SHELXS97* (Sheldrick, 2008); program(s) used to refine structure: *SHELXL97* (Sheldrick, 2008); molecular graphics: *ORTEP-3* (Farrugia, 1997); software used to prepare material for publication: *CrystalStructure* (Rigaku/MSC, 2004).

The authors acknowledge support from the Educational Commission of Zhejiang Province (200803289).

Supplementary data and figures for this paper are available from the IUCr electronic archives (Reference: IS2454).

## References

- Bergmann, E. D., Cohen, S. & Shahak, I. (1959). *J. Chem. Soc.* **11**, 3278–3285.  
 Butters, M., Ebbs, J., Green, S. P., MacRae, J., Morland, M. C., Murtiashaw, C. W. & Pettman, A. J. (2001). *Org. Process Res. Dev.* **5**, 28–36.  
 Farrugia, L. J. (1997). *J. Appl. Cryst.* **30**, 565.  
 Higashi, T. (1995). *ABSCOR*. Rigaku Corporation, Tokyo, Japan.  
 Rigaku/MSC (2004). *PROCESS-AUTO* and *CrystalStructure*. Rigaku/MSC, The Woodlands, Texas, USA.  
 Sheldrick, G. M. (2008). *Acta Cryst.* **A64**, 112–122.

## supporting information

*Acta Cryst.* (2009). E65, o2582 [doi:10.1107/S1600536809035430]

## 6-Ethyl-5-fluoro-2-methoxypyrimidin-4(3*H*)-one

Yu-Yuan Ye and Kai Yang

### S1. Comment

The fluoro-containing pyrimidines have been used as a kind of important intermediates for the synthesis of some anticancer drugs and antifungal drugs (Bergmann *et al.*, 1959; Butters *et al.*, 2001). In the synthesis of the novel antifungal drug-Voriconazole, we have prepared the title compound 6-ethyl-5-fluoro-2-methoxypyrimidin-4(3*H*)-one as an intermediate, which was synthesized by reacting methyl 2-fluoro-3-oxopentanoate with *o*-methylisourea sulfate in a solution of sodium methylate in methanol.

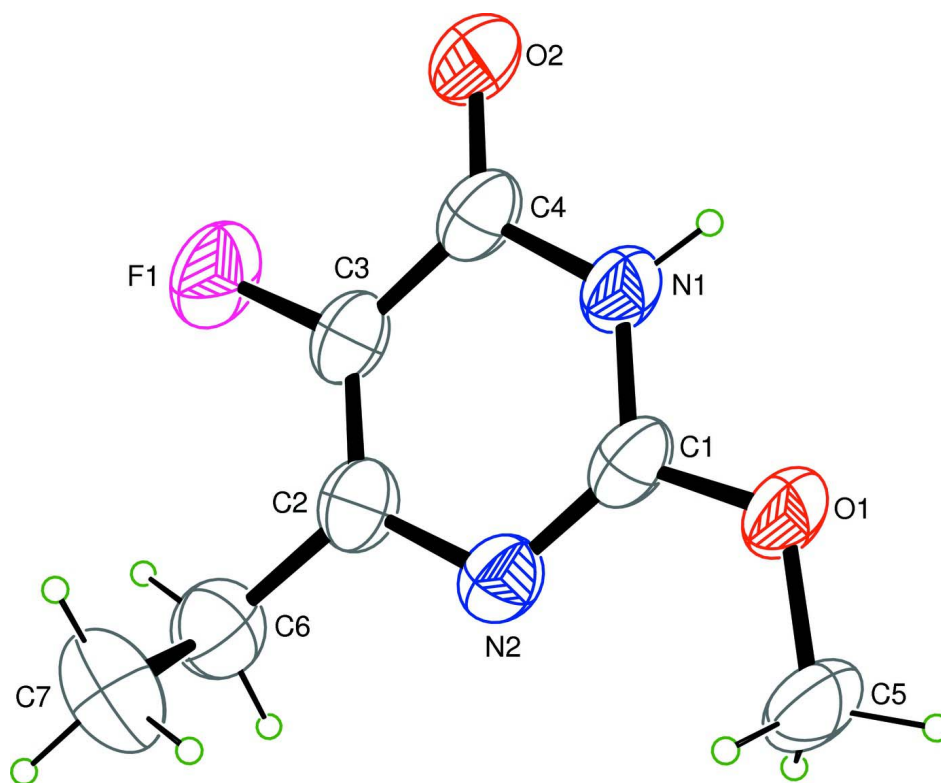
The molecular structure of the title compound, (I), is illustrated in Fig. 1. The bond length of C4—O2 and C1—O1 are 1.238 (3) and 1.321 (2) Å, respectively, corresponding to a double C=O bond and a  $Csp^2$ —O single bond. In the six-membered pyrimidine ring, the even bond lengths of C—N and C—C are 1.361 (3) and 1.380 (3) Å, respectively, indicating these bond forming a conjugating system. The atoms in the pyrimidine ring (C1—C4/N1/N2) form a good plane with a mean deviation of 0.006 Å. An intermolecular N—H...O hydrogen bond was found to link two molecules as a pair (Fig. 2 and Table 1).

### S2. Experimental

To a 250 ml flask was added a 80 ml solution of 25% sodium methylate in methanol. The solution was cooled to 278 K, and then 40 g *o*-methylisourea sulfate and 20 g methyl 2-fluoro-3-oxopentanoate were added. After the addition, the mixture were stirred at 298 K for half an hour and refluxed for three hours. The mixture was concentrated under reduced pressure, and the residue was dissolved with 200 ml water. The aqueous solution was treated with 6*M* hydrochloric acid to pH3 and cooled in refrigerator for three hours. The resulted precipitate was filtered, to give 12.5 g product as white powder (yield 53.8%; m.p. 447–449 K). Since the product was not found to be suitable for X-ray diffraction studies, a few samples were dissolved in absolute ethanol, which was allowed to evaporate slowly to give colourless crystals of (I) suitable for X-ray diffraction studies.

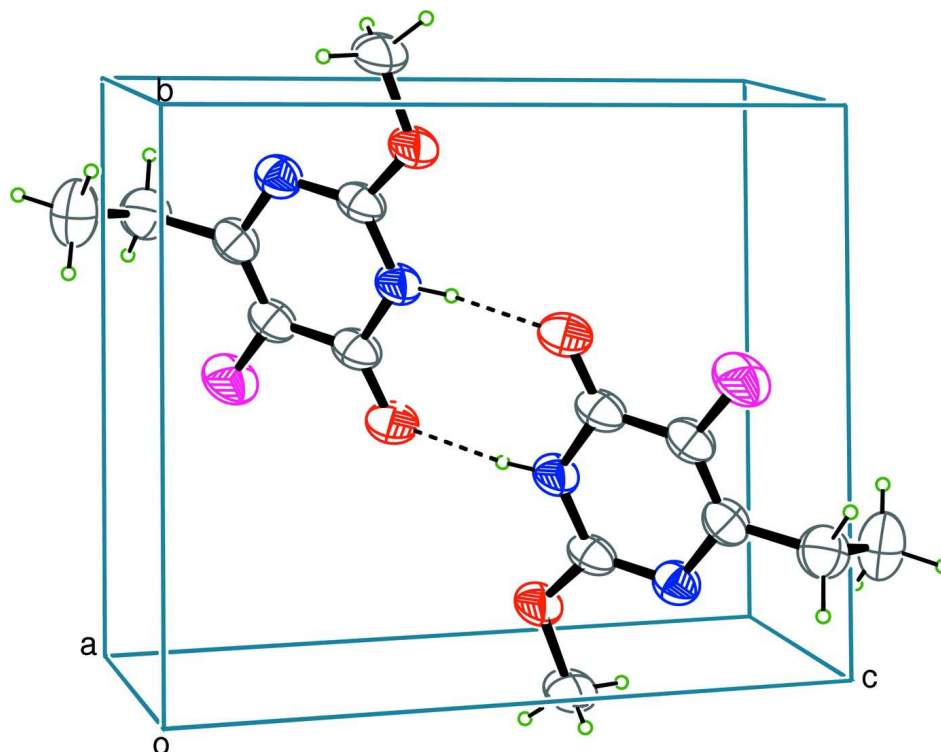
### S3. Refinement

H atoms were placed in calculated positions (C—H = 0.96–0.97 Å and N—H = 0.86 Å) and refined using a riding model, with  $U_{iso}(H) = 1.2U_{eq}(C, N)$  or  $1.5U_{eq}(\text{methyl } C)$ .



**Figure 1**

The molecular structure of (I) with 30% probability displacement ellipsoids.

**Figure 2**

Packing diagram of (I), showing hydrogen bonds as dashed lines.

### 6-Ethyl-5-fluoro-2-methoxypyrimidin-4(3H)-one

#### Crystal data

$C_7H_9FN_2O_2$

$M_r = 172.16$

Triclinic,  $P\bar{1}$

Hall symbol:  $-P\ 1$

$a = 4.5711$  (4) Å

$b = 8.4985$  (8) Å

$c = 10.8546$  (11) Å

$\alpha = 88.043$  (2)°

$\beta = 79.737$  (3)°

$\gamma = 79.616$  (2)°

$V = 408.13$  (7) Å<sup>3</sup>

$Z = 2$

$F(000) = 180.00$

$D_x = 1.401$  Mg m<sup>-3</sup>

Mo  $K\alpha$  radiation,  $\lambda = 0.71075$  Å

Cell parameters from 2411 reflections

$\theta = 3.1\text{--}27.4^\circ$

$\mu = 0.12$  mm<sup>-1</sup>

$T = 296$  K

Chunk, colorless

$0.40 \times 0.28 \times 0.18$  mm

#### Data collection

Rigaku R-AXIS RAPID

diffractometer

Detector resolution: 10.00 pixels mm<sup>-1</sup>

$\omega$  scans

Absorption correction: multi-scan

(*ABSCOR*; Higashi, 1995)

$T_{\min} = 0.948$ ,  $T_{\max} = 0.979$

4010 measured reflections

1842 independent reflections

945 reflections with  $I > 2\sigma(I)$

$R_{\text{int}} = 0.019$

$\theta_{\max} = 27.4^\circ$

$h = -5 \rightarrow 5$

$k = -10 \rightarrow 11$

$l = -14 \rightarrow 14$

Refinement

Refinement on  $F^2$

$R[F^2 > 2\sigma(F^2)] = 0.047$

$wR(F^2) = 0.106$

$S = 1.00$

1842 reflections

111 parameters

H-atom parameters constrained

$w = 1/[\sigma^2(F_o^2) + (0.P)^2 + 0.345P]$

where  $P = (F_o^2 + 2F_c^2)/3$

$(\Delta/\sigma)_{\max} < 0.001$

$\Delta\rho_{\max} = 0.39 \text{ e } \text{\AA}^{-3}$

$\Delta\rho_{\min} = -0.37 \text{ e } \text{\AA}^{-3}$

Extinction correction: *SHELXL97* (Sheldrick, 2008)

Extinction coefficient: 0.025 (2)

Special details

**Geometry.** All e.s.d.'s (except the e.s.d. in the dihedral angle between two l.s. planes) are estimated using the full covariance matrix. The cell e.s.d.'s are taken into account individually in the estimation of e.s.d.'s in distances, angles and torsion angles; correlations between e.s.d.'s in cell parameters are only used when they are defined by crystal symmetry. An approximate (isotropic) treatment of cell e.s.d.'s is used for estimating e.s.d.'s involving l.s. planes.

**Refinement.** Refinement using all reflections. The weighted  $R$ -factor ( $wR$ ) and goodness of fit ( $S$ ) are based on  $F^2$ .  $R$ -factor (gt) are based on  $F$ . The threshold expression of  $F^2 > 2.0 \sigma(F^2)$  is used only for calculating  $R$ -factor (gt).

Fractional atomic coordinates and isotropic or equivalent isotropic displacement parameters ( $\text{\AA}^2$ )

|     | $x$         | $y$         | $z$          | $U_{\text{iso}}^*/U_{\text{eq}}$ |
|-----|-------------|-------------|--------------|----------------------------------|
| F1  | -0.2750 (3) | 0.5521 (2)  | 0.78974 (17) | 0.0840 (5)                       |
| O1  | 0.6346 (4)  | 0.0891 (2)  | 0.60826 (17) | 0.0674 (5)                       |
| O2  | 0.1625 (4)  | 0.6002 (2)  | 0.58950 (19) | 0.0754 (6)                       |
| N1  | 0.3901 (4)  | 0.3399 (2)  | 0.6042 (2)   | 0.0577 (5)                       |
| N2  | 0.2058 (4)  | 0.1623 (2)  | 0.7615 (2)   | 0.0587 (5)                       |
| C1  | 0.4039 (5)  | 0.1970 (2)  | 0.6603 (2)   | 0.0558 (6)                       |
| C2  | -0.0212 (5) | 0.2877 (3)  | 0.8040 (2)   | 0.0579 (6)                       |
| C3  | -0.0446 (5) | 0.4310 (3)  | 0.7475 (2)   | 0.0590 (7)                       |
| C4  | 0.1656 (6)  | 0.4689 (3)  | 0.6427 (2)   | 0.0603 (7)                       |
| C5  | 0.6683 (7)  | -0.0711 (2) | 0.6608 (2)   | 0.0788 (9)                       |
| C6  | -0.2321 (6) | 0.2513 (3)  | 0.9191 (2)   | 0.0753 (8)                       |
| C7  | -0.0903 (8) | 0.2402 (4)  | 1.0339 (2)   | 0.0997 (11)                      |
| H1  | 0.5276      | 0.3520      | 0.5412       | 0.069*                           |
| H51 | 0.7001      | -0.0670     | 0.7457       | 0.095*                           |
| H52 | 0.8384      | -0.1380     | 0.6122       | 0.095*                           |
| H53 | 0.4886      | -0.1142     | 0.6595       | 0.095*                           |
| H61 | -0.2930     | 0.1500      | 0.9075       | 0.090*                           |
| H62 | -0.4085     | 0.3355      | 0.9311       | 0.090*                           |
| H71 | 0.0851      | 0.1573      | 1.0231       | 0.120*                           |
| H72 | -0.2328     | 0.2156      | 1.1050       | 0.120*                           |
| H73 | -0.0324     | 0.3405      | 1.0473       | 0.120*                           |

Atomic displacement parameters ( $\text{\AA}^2$ )

|    | $U^{11}$    | $U^{22}$    | $U^{33}$    | $U^{12}$    | $U^{13}$     | $U^{23}$     |
|----|-------------|-------------|-------------|-------------|--------------|--------------|
| F1 | 0.0660 (10) | 0.0684 (10) | 0.1026 (13) | 0.0173 (8)  | -0.0007 (9)  | -0.0156 (9)  |
| O1 | 0.0774 (13) | 0.0441 (9)  | 0.0690 (12) | 0.0153 (9)  | -0.0074 (10) | -0.0028 (8)  |
| O2 | 0.0822 (14) | 0.0447 (10) | 0.0864 (14) | 0.0146 (9)  | -0.0062 (11) | 0.0003 (9)   |
| N1 | 0.0625 (13) | 0.0437 (11) | 0.0595 (13) | 0.0091 (10) | -0.0095 (10) | -0.0023 (10) |

|    |             |             |             |              |              |              |
|----|-------------|-------------|-------------|--------------|--------------|--------------|
| N2 | 0.0594 (13) | 0.0517 (12) | 0.0629 (14) | -0.0013 (10) | -0.0131 (11) | -0.0034 (10) |
| C1 | 0.0606 (16) | 0.0431 (13) | 0.0625 (16) | 0.0074 (11)  | -0.0230 (13) | -0.0094 (12) |
| C2 | 0.0502 (15) | 0.0603 (16) | 0.0623 (16) | -0.0031 (12) | -0.0122 (12) | -0.0101 (13) |
| C3 | 0.0499 (15) | 0.0520 (15) | 0.0694 (17) | 0.0079 (12)  | -0.0097 (13) | -0.0117 (13) |
| C4 | 0.0620 (17) | 0.0456 (14) | 0.0698 (17) | 0.0082 (12)  | -0.0187 (14) | -0.0083 (13) |
| C5 | 0.102 (2)   | 0.0428 (14) | 0.082 (2)   | 0.0155 (15)  | -0.0193 (18) | -0.0009 (14) |
| C6 | 0.0602 (18) | 0.077 (2)   | 0.085 (2)   | -0.0112 (15) | -0.0033 (16) | -0.0051 (17) |
| C7 | 0.091 (2)   | 0.136 (3)   | 0.069 (2)   | -0.029 (2)   | 0.0017 (18)  | 0.004 (2)    |

*Geometric parameters (Å, °)*

|             |             |             |            |
|-------------|-------------|-------------|------------|
| F1—C3       | 1.359 (2)   | C6—C7       | 1.496 (4)  |
| O1—C1       | 1.321 (2)   | N1—H1       | 0.860      |
| O1—C5       | 1.451 (3)   | C5—H51      | 0.960      |
| O2—C4       | 1.238 (3)   | C5—H52      | 0.960      |
| N1—C1       | 1.336 (3)   | C5—H53      | 0.960      |
| N1—C4       | 1.379 (3)   | C6—H61      | 0.970      |
| N2—C1       | 1.354 (3)   | C6—H62      | 0.970      |
| N2—C2       | 1.375 (3)   | C7—H71      | 0.960      |
| C2—C3       | 1.340 (3)   | C7—H72      | 0.960      |
| C2—C6       | 1.496 (3)   | C7—H73      | 0.960      |
| C3—C4       | 1.420 (3)   |             |            |
| C1—O1—C5    | 118.15 (19) | O1—C5—H51   | 109.5      |
| C1—N1—C4    | 123.1 (2)   | O1—C5—H52   | 109.5      |
| C1—N2—C2    | 114.5 (2)   | O1—C5—H53   | 109.5      |
| O1—C1—N1    | 113.63 (19) | H51—C5—H52  | 109.5      |
| O1—C1—N2    | 121.8 (2)   | H51—C5—H53  | 109.5      |
| N1—C1—N2    | 124.6 (2)   | H52—C5—H53  | 109.5      |
| N2—C2—C3    | 122.1 (2)   | C2—C6—H61   | 108.7      |
| N2—C2—C6    | 114.4 (2)   | C2—C6—H62   | 108.7      |
| C3—C2—C6    | 123.5 (2)   | C7—C6—H61   | 108.7      |
| F1—C3—C2    | 121.0 (2)   | C7—C6—H62   | 108.7      |
| F1—C3—C4    | 115.4 (2)   | H61—C6—H62  | 109.5      |
| C2—C3—C4    | 123.6 (2)   | C6—C7—H71   | 109.5      |
| O2—C4—N1    | 121.3 (2)   | C6—C7—H72   | 109.5      |
| O2—C4—C3    | 126.6 (2)   | C6—C7—H73   | 109.5      |
| N1—C4—C3    | 112.1 (2)   | H71—C7—H72  | 109.5      |
| C2—C6—C7    | 112.5 (2)   | H71—C7—H73  | 109.5      |
| C1—N1—H1    | 118.5       | H72—C7—H73  | 109.5      |
| C4—N1—H1    | 118.5       |             |            |
| C5—O1—C1—N1 | -179.1 (2)  | N2—C2—C3—F1 | 178.6 (2)  |
| C5—O1—C1—N2 | 1.4 (3)     | N2—C2—C3—C4 | -2.4 (4)   |
| C1—N1—C4—O2 | 179.0 (2)   | N2—C2—C6—C7 | 72.7 (3)   |
| C1—N1—C4—C3 | -0.0 (3)    | C3—C2—C6—C7 | -105.8 (3) |
| C4—N1—C1—O1 | 179.3 (2)   | C6—C2—C3—F1 | -3.0 (4)   |
| C4—N1—C1—N2 | -1.2 (4)    | C6—C2—C3—C4 | 176.0 (3)  |

|             |            |             |            |
|-------------|------------|-------------|------------|
| C1—N2—C2—C3 | 1.1 (4)    | F1—C3—C4—O2 | 1.9 (4)    |
| C1—N2—C2—C6 | -177.5 (2) | F1—C3—C4—N1 | -179.2 (2) |
| C2—N2—C1—O1 | -179.9 (2) | C2—C3—C4—O2 | -177.2 (3) |
| C2—N2—C1—N1 | 0.6 (4)    | C2—C3—C4—N1 | 1.8 (4)    |

*Hydrogen-bond geometry (Å, °)*

| <i>D—H...A</i>          | <i>D—H</i> | <i>H...A</i> | <i>D...A</i> | <i>D—H...A</i> |
|-------------------------|------------|--------------|--------------|----------------|
| N1—H1...O2 <sup>i</sup> | 0.86       | 1.91         | 2.763 (2)    | 174            |

Symmetry code: (i)  $-x+1, -y+1, -z+1$ .