

Acta Crystallographica Section E

Structure Reports

Online

ISSN 1600-5368

2,4-Dibromo-6-[(E)-(R)-1-phenylethyl]-iminomethylphenol

Dong-Guo Xia, Ya-Fen Ye and Ke-Wei Lei*

State Key Laboratory Base of Novel Functional Materials and Preparation Science
Institute of Solid Materials Chemistry, Faculty of Materials Science and Chemical
Engineering, Ningbo University, Ningbo 315211, People's Republic of China
Correspondence e-mail: leikeweipublic@hotmail.com

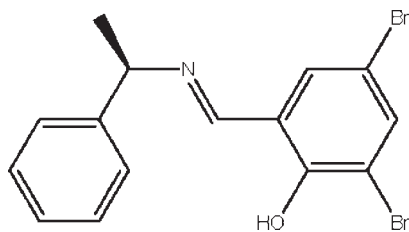
Received 21 July 2009; accepted 27 October 2009

Key indicators: single-crystal X-ray study; $T = 296$ K; mean $\sigma(\text{C}-\text{C}) = 0.007$ Å;
 R factor = 0.036; wR factor = 0.082; data-to-parameter ratio = 18.7.

In the title Schiff base, $\text{C}_{15}\text{H}_{13}\text{Br}_2\text{NO}$, the benzene and phenyl rings form a dihedral angle of $75.18(13)^\circ$. The $\text{N}=\text{C}$ bond length of $1.263(6)$ Å is shorter than of the $\text{N}-\text{C}$ bond [$1.476(5)$ Å], indicating a double bond. In the crystal, there is some pseudosymmetry. This occurs because most of the two molecules are centrosymmetrically related. The molecular structure is stabilized by intramolecular $\text{O}-\text{H}\cdots\text{N}$ hydrogen bonds.

Related literature

For photochromism and thermochromism in Schiff base compounds, see: Cohen *et al.* (1964).



Experimental

Crystal data

$\text{C}_{15}\text{H}_{13}\text{Br}_2\text{NO}$
 $M_r = 383.08$

Monoclinic, $I2$
 $a = 15.523(2)$ Å

$b = 9.3533(12)$ Å
 $c = 21.527(4)$ Å
 $\beta = 109.287(2)^\circ$
 $V = 2950.1(7)$ Å³
 $Z = 8$

Mo $K\alpha$ radiation
 $\mu = 5.49$ mm⁻¹
 $T = 296$ K
 $0.38 \times 0.31 \times 0.26$ mm

Data collection

Bruker SMART APEXII CCD
diffractometer
Absorption correction: multi-scan
(*SADABS*; Sheldrick, 2000)
 $T_{\min} = 0.158$, $T_{\max} = 0.236$

12876 measured reflections
6480 independent reflections
4357 reflections with $I > 2\sigma(I)$
 $R_{\text{int}} = 0.026$

Refinement

$R[F^2 > 2\sigma(F^2)] = 0.036$
 $wR(F^2) = 0.082$
 $S = 0.99$
6480 reflections
346 parameters
1 restraint

H atoms treated by a mixture of
independent and constrained
refinement
 $\Delta\rho_{\max} = 0.62$ e Å⁻³
 $\Delta\rho_{\min} = -0.50$ e Å⁻³
Absolute structure: Flack (1983),
3189 Friedel pairs
Flack parameter: 0.022 (9)

Table 1

Hydrogen-bond geometry (Å, °).

$D-H\cdots A$	$D-H$	$H\cdots A$	$D\cdots A$	$D-H\cdots A$
$\text{O1}-\text{H1}\cdots\text{N1}$	0.81	1.89	2.603 (4)	147
$\text{O2}-\text{H2}\cdots\text{N2}$	0.87	1.79	2.558 (5)	147

Data collection: *APEX2* (Bruker, 2007); cell refinement: *SAINT* (Bruker, 2007); data reduction: *SAINT*; program(s) used to solve structure: *SHELXS97* (Sheldrick, 2008); program(s) used to refine structure: *SHELXL97* (Sheldrick, 2008); molecular graphics: *SHELXTL* (Sheldrick, 2008); software used to prepare material for publication: *SHELXTL*.

This project was supported by the Talent Fund of Ningbo University (grant No. 2006668) and sponsored by the K.C. Wong Magna Fund of Ningbo University.

Supplementary data and figures for this paper are available from the IUCr electronic archives (Reference: BV2125).

References

- Bruker (2007). *APEX2* and *SAINT*. Bruker AXS Inc., Madison, Wisconsin, USA.
Cohen, M. D., Schmidt, G. M. J. & Flavian, S. (1964). *J. Chem. Soc.* pp. 2041–2043.
Flack, H. D. (1983). *Acta Cryst.* **A39**, 876–881.
Sheldrick, G. M. (2000). *SADABS*. University of Göttingen, Germany.
Sheldrick, G. M. (2008). *Acta Cryst.* **A64**, 112–122.

supporting information

Acta Cryst. (2009). E65, o3168 [doi:10.1107/S1600536809044638]

2,4-Dibromo-6-*{(E)-[(R)-1-phenylethyl]iminomethyl}*phenol**Dong-Guo Xia, Ya-Fen Ye and Ke-Wei Lei****S1. Comment**

Schiff bases have been used extensively as ligands in the field of coordination chemistry. Some of the reasons are that the N atom plays an important role in the formation of metal complexes, and that Schiff base compounds show photochromism and thermochromism in the solid state by proton transfer from the hydroxyl O atom to the imine N atom (Cohen *et al.*, 1964). Here we report on a new chiral Schiff base(I).

The chiral molecular structures of (I) which are two molecules in the illustrated in Fig. 1. The bond lengths and bond angles in (I) are within normal ranges. The N1–C7 distance of 1.263 (6) Å is a slightly smaller than the distance of N2–C22(1.270 (6)). The C7, N1, C8 and C2, C1, Br1 atoms form a bond angle of 119.3 (4) and 119.5 (3) °, respectively (Table 1). The molecular conformation is stabilized by an intramolecular O–H···N hydrogen bond (Table 2).

S2. Experimental

R-1-phenylethanamine (0.02 mol, 2.42 g) and 3,5-dibromo-2-hydroxybenzaldehyde (0.02 mol, 5.60 g) were dissolved in ethanol and the solution was refluxed for 4 h. After evaporation, a crude product was recrystallized twice from ethanol to give a pure yellow product. Yield: 83.7%. Calcd. for C₁₅H₁₃Br₂NO: C, 47.03; H, 3.42; N, 3.66; Found: C, 46.95; H, 3.49; N, 3.62%.

S3. Refinement

All H atoms were located from difference Fourier syntheses, H atoms from the C–H groups were placed in geometrically idealized positions and constrained to ride on their parent atoms (C–H = 0.93Å, 0.96Å, 0.97Å;) and $U_{\text{iso}}(\text{H})$ values equal to 1.2 $U_{\text{eq}}(\text{C})$.

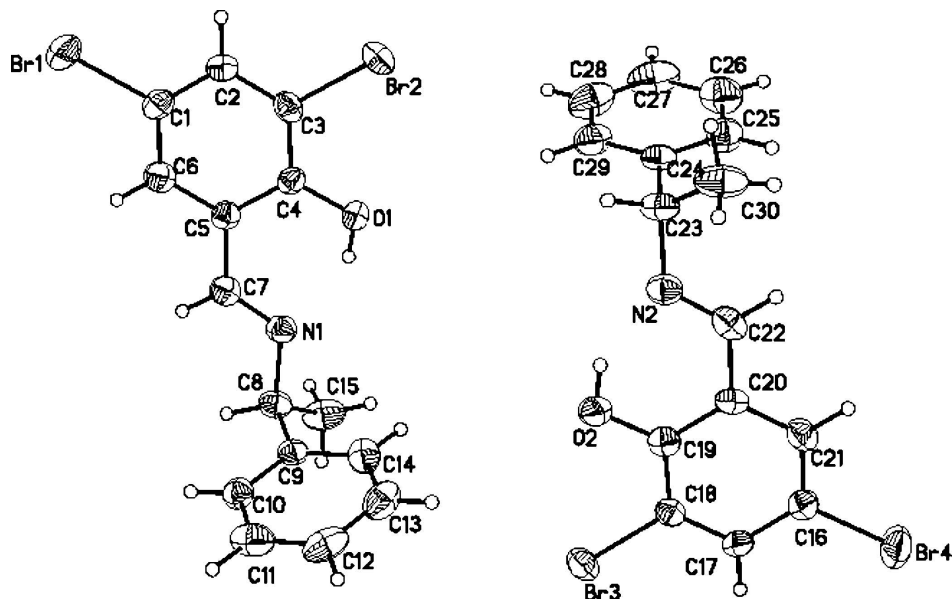


Figure 1

The structure of (I), showing 30% probability displacement ellipsoids and the atom-numbering scheme.

2,4-Dibromo-6-[(E)-(R)-1-phenylethyl]iminomethyl]phenol

Crystal data

$C_{15}H_{13}Br_2NO$

$M_r = 383.08$

Monoclinic, *I*2

Hall symbol: I 2y

$a = 15.523$ (2) Å

$b = 9.3533$ (12) Å

$c = 21.527$ (4) Å

$\beta = 109.287$ (2)°

$V = 2950.1$ (7) Å³

$Z = 8$

$F(000) = 1504$

$D_x = 1.725$ Mg m⁻³

Mo $K\alpha$ radiation, $\lambda = 0.71073$ Å

Cell parameters from 3597 reflections

$\theta = 2.4$ – 23.4 °

$\mu = 5.49$ mm⁻¹

$T = 296$ K

Block, yellow

$0.38 \times 0.31 \times 0.26$ mm

Data collection

Bruker SMART APEXII CCD
diffractometer

Radiation source: fine-focus sealed tube

Graphite monochromator

ω scans

Absorption correction: multi-scan
(*SADABS*; Sheldrick, 2000)

$T_{\min} = 0.158$, $T_{\max} = 0.236$

12876 measured reflections

6480 independent reflections

4357 reflections with $I > 2\sigma(I)$

$R_{\text{int}} = 0.026$

$\theta_{\max} = 27.5$ °, $\theta_{\min} = 2.0$ °

$h = -20$ → 20

$k = -12$ → 11

$l = -27$ → 26

Refinement

Refinement on F^2

Least-squares matrix: full

$R[F^2 > 2\sigma(F^2)] = 0.036$

$wR(F^2) = 0.082$

$S = 0.99$

6480 reflections

346 parameters

1 restraint

Primary atom site location: structure-invariant
direct methods

Secondary atom site location: difference Fourier
map

Hydrogen site location: inferred from
neighbouring sites

H atoms treated by a mixture of independent

and constrained refinement

$$w = 1/[\sigma^2(F_o^2) + (0.0192P)^2 + 1.2456P]$$

$$\text{where } P = (F_o^2 + 2F_c^2)/3$$

$$(\Delta/\sigma)_{\max} = 0.002$$

$$\Delta\rho_{\max} = 0.62 \text{ e } \text{\AA}^{-3}$$

$$\Delta\rho_{\min} = -0.50 \text{ e } \text{\AA}^{-3}$$

Absolute structure: Flack (1983), 2872 Friedel pairs

Absolute structure parameter: 0.022 (9)

Special details

Geometry. All e.s.d.'s (except the e.s.d. in the dihedral angle between two l.s. planes) are estimated using the full covariance matrix. The cell e.s.d.'s are taken into account individually in the estimation of e.s.d.'s in distances, angles and torsion angles; correlations between e.s.d.'s in cell parameters are only used when they are defined by crystal symmetry. An approximate (isotropic) treatment of cell e.s.d.'s is used for estimating e.s.d.'s involving l.s. planes.

Refinement. Refinement of F^2 against ALL reflections. The weighted R -factor wR and goodness of fit S are based on F^2 , conventional R -factors R are based on F , with F set to zero for negative F^2 . The threshold expression of $F^2 > \sigma(F^2)$ is used only for calculating R -factors(gt) *etc.* and is not relevant to the choice of reflections for refinement. R -factors based on F^2 are statistically about twice as large as those based on F , and R -factors based on ALL data will be even larger.

Fractional atomic coordinates and isotropic or equivalent isotropic displacement parameters (\AA^2)

	<i>x</i>	<i>y</i>	<i>z</i>	$U_{\text{iso}}^*/U_{\text{eq}}$
Br1	0.37953 (5)	-0.48288 (5)	1.03409 (3)	0.0857 (2)
Br2	0.34338 (4)	0.04283 (6)	1.15258 (2)	0.07989 (19)
Br3	0.16026 (3)	0.83627 (6)	0.83602 (2)	0.06812 (15)
Br4	0.11106 (5)	1.32687 (6)	0.97217 (3)	0.0987 (2)
N1	0.3623 (2)	0.1446 (4)	0.90617 (16)	0.0519 (9)
N2	0.1352 (2)	0.6719 (4)	1.07323 (16)	0.0545 (9)
O1	0.3584 (2)	0.1594 (3)	1.02596 (14)	0.0596 (9)
H1	0.3621 (3)	0.1891 (19)	0.992 (2)	0.089*
O2	0.1494 (2)	0.6885 (3)	0.95843 (14)	0.0616 (9)
H2	0.1469 (3)	0.649 (2)	0.994 (2)	0.092*
C1	0.3775 (3)	-0.2791 (5)	1.0328 (2)	0.0527 (11)
C2	0.3679 (3)	-0.2060 (5)	1.0852 (2)	0.0492 (11)
H2B	0.3653	-0.2546	1.1222	0.059*
C3	0.3622 (3)	-0.0595 (5)	1.08201 (19)	0.0512 (11)
C4	0.3661 (3)	0.0165 (5)	1.02755 (18)	0.0434 (9)
C5	0.3760 (3)	-0.0612 (5)	0.97431 (19)	0.0459 (10)
C6	0.3816 (3)	-0.2091 (5)	0.9777 (2)	0.0540 (12)
H6A	0.3881	-0.2610	0.9427	0.065*
C7	0.3746 (3)	0.0115 (5)	0.9143 (2)	0.0515 (10)
H7A	0.3832	-0.0423	0.8805	0.062*
C8	0.3566 (3)	0.2086 (5)	0.84227 (19)	0.0549 (11)
H8A	0.3705	0.1353	0.8144	0.066*
C9	0.2603 (3)	0.2606 (4)	0.80995 (18)	0.0448 (10)
C10	0.2032 (3)	0.1924 (5)	0.7561 (2)	0.0555 (11)
H10A	0.2249	0.1156	0.7382	0.067*
C11	0.1137 (3)	0.2351 (7)	0.7277 (2)	0.0750 (15)
H11A	0.0756	0.1862	0.6914	0.090*
C12	0.0810 (3)	0.3481 (7)	0.7525 (3)	0.0783 (16)
H12A	0.0211	0.3784	0.7326	0.094*
C13	0.1371 (4)	0.4176 (6)	0.8071 (3)	0.0737 (15)

H13A	0.1145	0.4935	0.8250	0.088*
C14	0.2261 (3)	0.3758 (5)	0.8354 (2)	0.0601 (12)
H14A	0.2639	0.4249	0.8717	0.072*
C15	0.4278 (3)	0.3274 (6)	0.8551 (2)	0.0783 (15)
H15A	0.4876	0.2875	0.8750	0.117*
H15B	0.4164	0.3970	0.8843	0.117*
H15C	0.4242	0.3724	0.8143	0.117*
C16	0.1200 (3)	1.1252 (5)	0.9680 (2)	0.0541 (11)
C17	0.1326 (2)	1.0647 (5)	0.91308 (18)	0.0465 (9)
H17A	0.1352	1.1218	0.8784	0.056*
C18	0.1413 (3)	0.9194 (5)	0.91066 (18)	0.0447 (10)
C19	0.1391 (2)	0.8311 (6)	0.96208 (17)	0.0460 (9)
C20	0.1247 (3)	0.8938 (5)	1.01712 (19)	0.0468 (10)
C21	0.1163 (3)	1.0434 (5)	1.01940 (19)	0.0553 (12)
H21A	0.1082	1.0864	1.0560	0.066*
C22	0.1220 (3)	0.8060 (6)	1.0725 (2)	0.0591 (13)
H22A	0.1104	0.8490	1.1079	0.071*
C23	0.1351 (3)	0.5817 (5)	1.12971 (19)	0.0582 (12)
H23A	0.1198	0.4849	1.1121	0.070*
C24	0.2320 (3)	0.5733 (5)	1.17797 (19)	0.0508 (10)
C25	0.2650 (3)	0.6751 (6)	1.2257 (2)	0.0672 (13)
H25A	0.2273	0.7496	1.2294	0.081*
C26	0.3544 (4)	0.6682 (7)	1.2688 (3)	0.0884 (18)
H26A	0.3766	0.7378	1.3010	0.106*
C27	0.4104 (4)	0.5554 (9)	1.2630 (3)	0.094 (2)
H27A	0.4697	0.5475	1.2920	0.113*
C28	0.3767 (4)	0.4568 (8)	1.2141 (3)	0.0921 (19)
H28A	0.4137	0.3824	1.2092	0.111*
C29	0.2892 (3)	0.4672 (6)	1.1726 (2)	0.0691 (14)
H29A	0.2678	0.3995	1.1394	0.083*
C30	0.0640 (3)	0.6210 (7)	1.1599 (2)	0.0813 (16)
H30A	0.0051	0.6225	1.1264	0.122*
H30B	0.0774	0.7139	1.1797	0.122*
H30C	0.0641	0.5519	1.1929	0.122*

Atomic displacement parameters (\AA^2)

	U^{11}	U^{22}	U^{33}	U^{12}	U^{13}	U^{23}
Br1	0.1247 (5)	0.0516 (3)	0.0857 (4)	0.0224 (3)	0.0414 (4)	0.0129 (3)
Br2	0.1140 (4)	0.0779 (4)	0.0438 (2)	0.0113 (3)	0.0207 (2)	-0.0087 (3)
Br3	0.0959 (4)	0.0645 (3)	0.0470 (2)	-0.0069 (3)	0.0277 (2)	-0.0083 (3)
Br4	0.1556 (6)	0.0524 (3)	0.1062 (4)	0.0174 (4)	0.0676 (4)	0.0002 (4)
N1	0.055 (2)	0.055 (3)	0.0459 (19)	-0.0056 (18)	0.0166 (16)	0.0031 (18)
N2	0.050 (2)	0.061 (3)	0.049 (2)	-0.0049 (18)	0.0103 (17)	0.0050 (18)
O1	0.083 (2)	0.0407 (18)	0.0500 (18)	0.0035 (15)	0.0152 (16)	-0.0009 (14)
O2	0.080 (2)	0.050 (2)	0.0496 (18)	-0.0038 (16)	0.0148 (16)	0.0040 (15)
C1	0.048 (3)	0.047 (3)	0.059 (3)	0.009 (2)	0.013 (2)	0.008 (2)
C2	0.049 (3)	0.053 (3)	0.044 (2)	0.003 (2)	0.0131 (19)	0.0082 (19)

C3	0.048 (3)	0.059 (3)	0.040 (2)	0.001 (2)	0.006 (2)	-0.009 (2)
C4	0.039 (2)	0.039 (2)	0.044 (2)	-0.0001 (19)	0.0036 (17)	0.0030 (19)
C5	0.040 (2)	0.048 (3)	0.047 (2)	0.005 (2)	0.0122 (19)	0.003 (2)
C6	0.050 (3)	0.062 (3)	0.053 (3)	0.014 (2)	0.021 (2)	0.001 (2)
C7	0.045 (2)	0.059 (3)	0.051 (2)	0.006 (2)	0.0177 (19)	0.000 (2)
C8	0.057 (3)	0.067 (3)	0.047 (2)	-0.001 (2)	0.025 (2)	0.008 (2)
C9	0.050 (3)	0.047 (2)	0.042 (2)	-0.003 (2)	0.022 (2)	0.0084 (19)
C10	0.068 (3)	0.049 (3)	0.056 (3)	0.002 (2)	0.028 (2)	0.004 (2)
C11	0.062 (3)	0.089 (4)	0.065 (3)	-0.019 (3)	0.008 (3)	0.017 (3)
C12	0.060 (3)	0.077 (4)	0.098 (4)	0.019 (3)	0.027 (3)	0.036 (4)
C13	0.081 (4)	0.058 (3)	0.096 (4)	0.009 (3)	0.049 (3)	0.015 (3)
C14	0.062 (3)	0.058 (3)	0.066 (3)	-0.007 (2)	0.029 (2)	-0.003 (2)
C15	0.056 (3)	0.095 (4)	0.083 (3)	-0.011 (3)	0.022 (2)	0.032 (3)
C16	0.062 (3)	0.051 (3)	0.052 (3)	0.006 (2)	0.022 (2)	0.003 (2)
C17	0.048 (2)	0.045 (2)	0.043 (2)	-0.001 (2)	0.0105 (18)	0.008 (2)
C18	0.041 (2)	0.053 (3)	0.039 (2)	-0.0018 (19)	0.0110 (19)	-0.0010 (19)
C19	0.034 (2)	0.052 (3)	0.046 (2)	-0.008 (2)	0.0057 (17)	-0.001 (2)
C20	0.041 (2)	0.060 (3)	0.038 (2)	0.0021 (19)	0.0121 (18)	0.011 (2)
C21	0.055 (3)	0.067 (3)	0.048 (2)	0.002 (2)	0.023 (2)	-0.005 (2)
C22	0.054 (3)	0.078 (4)	0.046 (2)	-0.002 (3)	0.019 (2)	-0.007 (2)
C23	0.060 (3)	0.065 (3)	0.045 (2)	-0.009 (2)	0.011 (2)	0.013 (2)
C24	0.049 (2)	0.061 (3)	0.044 (2)	-0.003 (2)	0.0170 (18)	0.015 (2)
C25	0.057 (3)	0.074 (3)	0.067 (3)	0.005 (3)	0.015 (2)	0.007 (3)
C26	0.088 (5)	0.093 (5)	0.071 (4)	-0.026 (4)	0.008 (3)	-0.003 (3)
C27	0.046 (3)	0.124 (6)	0.099 (4)	-0.005 (4)	0.006 (3)	0.044 (5)
C28	0.066 (4)	0.103 (5)	0.116 (5)	0.030 (4)	0.042 (4)	0.044 (4)
C29	0.070 (3)	0.073 (4)	0.071 (3)	0.013 (3)	0.032 (3)	0.020 (3)
C30	0.051 (3)	0.124 (5)	0.068 (3)	0.000 (3)	0.018 (2)	0.037 (3)

Geometric parameters (Å, °)

Br1—C1	1.907 (5)	C13—C14	1.370 (7)
Br2—C3	1.898 (4)	C13—H13A	0.9300
Br3—C18	1.894 (4)	C14—H14A	0.9300
Br4—C16	1.896 (5)	C15—H15A	0.9600
N1—C7	1.263 (6)	C15—H15B	0.9600
N1—C8	1.476 (5)	C15—H15C	0.9600
N2—C22	1.270 (6)	C16—C21	1.362 (6)
N2—C23	1.480 (5)	C16—C17	1.381 (6)
O1—C4	1.342 (5)	C17—C18	1.369 (6)
O1—H1	0.8066	C17—H17A	0.9300
O2—C19	1.348 (6)	C18—C19	1.390 (6)
O2—H2	0.8662	C19—C20	1.405 (6)
C1—C2	1.368 (6)	C20—C21	1.408 (7)
C1—C6	1.374 (6)	C20—C22	1.460 (6)
C2—C3	1.373 (6)	C21—H21A	0.9300
C2—H2B	0.9300	C22—H22A	0.9300
C3—C4	1.389 (6)	C23—C30	1.500 (6)

C4—C5	1.408 (6)	C23—C24	1.521 (6)
C5—C6	1.386 (6)	C23—H23A	0.9800
C5—C7	1.453 (6)	C24—C29	1.362 (6)
C6—H6A	0.9300	C24—C25	1.370 (6)
C7—H7A	0.9300	C25—C26	1.392 (7)
C8—C9	1.507 (6)	C25—H25A	0.9300
C8—C15	1.527 (6)	C26—C27	1.399 (9)
C8—H8A	0.9800	C26—H26A	0.9300
C9—C10	1.363 (5)	C27—C28	1.366 (9)
C9—C14	1.390 (6)	C27—H27A	0.9300
C10—C11	1.379 (6)	C28—C29	1.360 (7)
C10—H10A	0.9300	C28—H28A	0.9300
C11—C12	1.355 (8)	C29—H29A	0.9300
C11—H11A	0.9300	C30—H30A	0.9600
C12—C13	1.373 (7)	C30—H30B	0.9600
C12—H12A	0.9300	C30—H30C	0.9600
C7—N1—C8	119.3 (4)	H15A—C15—H15C	109.5
C22—N2—C23	121.9 (4)	H15B—C15—H15C	109.5
C4—O1—H1	109.5	C21—C16—C17	121.4 (4)
C19—O2—H2	109.5	C21—C16—Br4	119.8 (3)
C2—C1—C6	121.5 (4)	C17—C16—Br4	118.8 (3)
C2—C1—Br1	119.5 (3)	C18—C17—C16	118.8 (4)
C6—C1—Br1	118.9 (4)	C18—C17—H17A	120.6
C1—C2—C3	118.7 (4)	C16—C17—H17A	120.6
C1—C2—H2B	120.7	C17—C18—C19	122.1 (4)
C3—C2—H2B	120.7	C17—C18—Br3	119.0 (3)
C2—C3—C4	122.2 (4)	C19—C18—Br3	118.9 (3)
C2—C3—Br2	119.2 (4)	O2—C19—C18	120.4 (4)
C4—C3—Br2	118.6 (3)	O2—C19—C20	121.1 (4)
O1—C4—C3	120.2 (4)	C18—C19—C20	118.4 (5)
O1—C4—C5	121.8 (4)	C19—C20—C21	119.1 (4)
C3—C4—C5	118.0 (4)	C19—C20—C22	120.6 (4)
C6—C5—C4	119.6 (4)	C21—C20—C22	120.2 (4)
C6—C5—C7	119.7 (4)	C16—C21—C20	120.0 (4)
C4—C5—C7	120.6 (4)	C16—C21—H21A	120.0
C1—C6—C5	120.0 (4)	C20—C21—H21A	120.0
C1—C6—H6A	120.0	N2—C22—C20	121.1 (4)
C5—C6—H6A	120.0	N2—C22—H22A	119.4
N1—C7—C5	122.8 (4)	C20—C22—H22A	119.4
N1—C7—H7A	118.6	N2—C23—C30	114.6 (4)
C5—C7—H7A	118.6	N2—C23—C24	108.8 (3)
N1—C8—C9	107.8 (3)	C30—C23—C24	114.8 (4)
N1—C8—C15	108.0 (3)	N2—C23—H23A	106.0
C9—C8—C15	113.4 (4)	C30—C23—H23A	106.0
N1—C8—H8A	109.2	C24—C23—H23A	106.0
C9—C8—H8A	109.2	C29—C24—C25	118.5 (4)
C15—C8—H8A	109.2	C29—C24—C23	120.3 (5)

C10—C9—C14	118.2 (4)	C25—C24—C23	121.1 (4)
C10—C9—C8	120.6 (4)	C24—C25—C26	120.8 (5)
C14—C9—C8	121.2 (4)	C24—C25—H25A	119.6
C9—C10—C11	121.2 (4)	C26—C25—H25A	119.6
C9—C10—H10A	119.4	C25—C26—C27	119.1 (5)
C11—C10—H10A	119.4	C25—C26—H26A	120.4
C12—C11—C10	120.3 (5)	C27—C26—H26A	120.4
C12—C11—H11A	119.8	C28—C27—C26	119.2 (5)
C10—C11—H11A	119.8	C28—C27—H27A	120.4
C11—C12—C13	119.5 (5)	C26—C27—H27A	120.4
C11—C12—H12A	120.3	C29—C28—C27	120.2 (6)
C13—C12—H12A	120.3	C29—C28—H28A	119.9
C14—C13—C12	120.4 (5)	C27—C28—H28A	119.9
C14—C13—H13A	119.8	C28—C29—C24	122.2 (6)
C12—C13—H13A	119.8	C28—C29—H29A	118.9
C13—C14—C9	120.4 (4)	C24—C29—H29A	118.9
C13—C14—H14A	119.8	C23—C30—H30A	109.5
C9—C14—H14A	119.8	C23—C30—H30B	109.5
C8—C15—H15A	109.5	H30A—C30—H30B	109.5
C8—C15—H15B	109.5	C23—C30—H30C	109.5
H15A—C15—H15B	109.5	H30A—C30—H30C	109.5
C8—C15—H15C	109.5	H30B—C30—H30C	109.5

Hydrogen-bond geometry (Å, °)

<i>D—H...A</i>	<i>D—H</i>	<i>H...A</i>	<i>D...A</i>	<i>D—H...A</i>
O1—H1...N1	0.81	1.89	2.603 (4)	147
O2—H2...N2	0.87	1.79	2.558 (5)	147