

Acta Crystallographica Section E

Structure Reports

Online

ISSN 1600-5368

2-Phenylimidazolium nitrate monohydrate

 Dao-Cheng Xia,^{a*} Wan-Cheng Li^b and Shuang Han^a
^aYuncheng University, College of Chemistry, Yuncheng 044000, People's Republic of China, and ^bState Key Laboratory of Integrated Optoelectronics, Jilin University, Changchun 130021, People's Republic of China

Correspondence e-mail: xiadaocheng1976@yahoo.com.cn

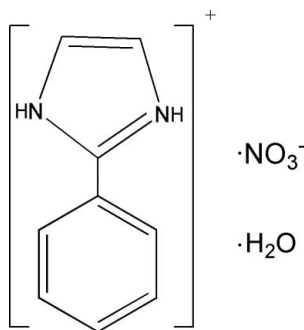
Received 21 November 2009; accepted 25 November 2009

 Key indicators: single-crystal X-ray study; $T = 293$ K; mean $\sigma(\text{C}-\text{C}) = 0.002$ Å; R factor = 0.040; wR factor = 0.104; data-to-parameter ratio = 15.7.

In the title hydrated molecular salt, $\text{C}_9\text{H}_9\text{N}_2^+\cdot\text{NO}_3^-\cdot\text{H}_2\text{O}$, the dihedral angle between the aromatic rings in the cation is $11.09(8)^\circ$. In the crystal, the components are linked into chains propagating in $[101]$ by $\text{N}-\text{H}\cdots\text{O}$ and $\text{O}-\text{H}\cdots\text{O}$ hydrogen bonds.

Related literature

For related structures containing 2-phenylimidazole, see: Liu *et al.* (2008); Yang *et al.* (2008).



Experimental

Crystal data

 $\text{C}_9\text{H}_9\text{N}_2^+\cdot\text{NO}_3^-\cdot\text{H}_2\text{O}$
 $M_r = 225.21$

 Monoclinic, $P2_1/n$
 $a = 8.026(4)$ Å
 $b = 14.951(7)$ Å
 $c = 8.895(5)$ Å
 $\beta = 101.096(5)^\circ$
 $V = 1047.4(9)$ Å³
 $Z = 4$
 Mo $K\alpha$ radiation
 $\mu = 0.11$ mm⁻¹
 $T = 293$ K
 $0.33 \times 0.28 \times 0.22$ mm

Data collection

 Bruker SMART APEX CCD diffractometer
 Absorption correction: multi-scan (SADABS; Sheldrick, 1996)
 $T_{\min} = 0.56$, $T_{\max} = 0.81$

 4388 measured reflections
 2407 independent reflections
 1430 reflections with $I > 2\sigma(I)$
 $R_{\text{int}} = 0.018$

Refinement

 $R[F^2 > 2\sigma(F^2)] = 0.040$
 $wR(F^2) = 0.104$
 $S = 0.88$
 2407 reflections
 153 parameters

 H atoms treated by a mixture of independent and constrained refinement
 $\Delta\rho_{\text{max}} = 0.15$ e Å⁻³
 $\Delta\rho_{\text{min}} = -0.21$ e Å⁻³
Table 1

Hydrogen-bond geometry (Å, °).

$D-\text{H}\cdots A$	$D-\text{H}$	$\text{H}\cdots A$	$D\cdots A$	$D-\text{H}\cdots A$
$\text{N2}-\text{H2}\cdots\text{O1W}$	0.86	1.92	2.753 (2)	163
$\text{N3}-\text{H3}\cdots\text{O1}^i$	0.86	1.94	2.7809 (17)	166
$\text{O1W}-\text{HW11}\cdots\text{O2}^{ii}$	0.83 (2)	2.21 (2)	2.989 (2)	155.3 (19)
$\text{O1W}-\text{HW12}\cdots\text{O2}$	0.87 (2)	2.07 (2)	2.905 (2)	162.3 (19)

 Symmetry codes: (i) $-x + 1, -y, -z + 2$; (ii) $-x, -y, -z + 1$.

Data collection: SMART (Bruker, 1998); cell refinement: SAINT (Bruker, 1998); data reduction: SAINT; program(s) used to solve structure: SHELXS97 (Sheldrick, 2008); program(s) used to refine structure: SHELXL97 (Sheldrick, 2008); molecular graphics: SHELXTL (Sheldrick, 2008); software used to prepare material for publication: SHELXTL.

We thank Yuncheng University and Jilin University for support.

Supplementary data and figures for this paper are available from the IUCr electronic archives (Reference: HB5245).

References

- Bruker (1998). SMART and SAINT. Bruker AXS Inc., Madison, Wisconsin, USA.
 Liu, Y.-Y., Ma, J.-F., Yang, J., Ma, J.-C. & Ping, G.-J. (2008). *CrystEngComm*, **10**, 565–572.
 Sheldrick, G. M. (1996). SADABS. University of Göttingen, Germany.
 Sheldrick, G. M. (2008). *Acta Cryst.* **A64**, 112–122.
 Yang, J., Ma, J.-F., Batten, S. R. & Su, Z.-M. (2008). *Chem. Commun.* pp. 2233–2235.

supporting information

Acta Cryst. (2009). E65, o3283 [doi:10.1107/S1600536809050703]

2-Phenylimidazolium nitrate monohydrate

Dao-Cheng Xia, Wan-Cheng Li and Shuang Han

S1. Comment

2-Phenylimidazole, as an important N-containing ligand with excellent coordinating abilities and fruitful aromatic systems, have been extensively used to build supramolecular architectures (Liu *et al.*, 2008; Yang *et al.*, 2008). We report here the synthesis and structure of the title compound, namely, C₉H₁₁N₃O₄ (I)

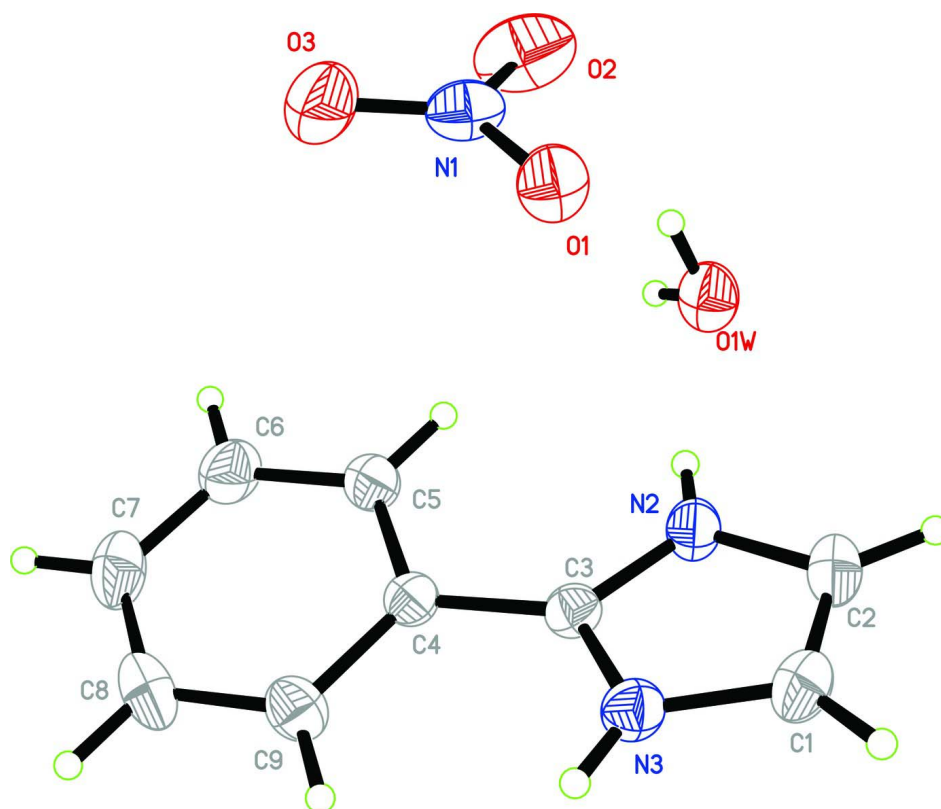
There are one 2-phenylimidazole cation, one nitrate anion and one water molecule in the asymmetric unit of the title compound, C₉H₁₁N₃O₄ (Fig. 1). In the crystal, molecules are linked into layer structures by N—H \cdots O and O—H \cdots O H-bonding interactions (Table 1).

S2. Experimental

A mixture of Cu(NO₃)₂·2.5H₂O (0.5 mmol), 2-phenylimidazole (0.5 mmol), and H₂O (30 mmol) was heated in a sealed vessel at 413 K for 2 days. After the mixture was slowly cooled to room temperature, colorless blocks of (I) were obtained (23% yield).

S3. Refinement

All H atoms on C and N atoms were positioned geometrically (C—H = 0.93 Å, N—H = 0.86 Å) and refined as riding, with $U_{\text{iso}}(\text{H})=1.2U_{\text{eq}}(\text{carrier})$. The water H-atoms were located in a difference map, and was refined freely.

**Figure 1**

The structure of (I), showing displacement ellipsoids drawn at the 30% probability level.

2-Phenylimidazolium nitrate monohydrate

Crystal data

$C_9H_9N_2^+ \cdot NO_3^- \cdot H_2O$

$M_r = 225.21$

Monoclinic, $P2_1/n$

Hall symbol: -P 2yn

$a = 8.026 (4) \text{ \AA}$

$b = 14.951 (7) \text{ \AA}$

$c = 8.895 (5) \text{ \AA}$

$\beta = 101.096 (5)^\circ$

$V = 1047.4 (9) \text{ \AA}^3$

$Z = 4$

$F(000) = 472$

$D_x = 1.428 \text{ Mg m}^{-3}$

Mo $K\alpha$ radiation, $\lambda = 0.71073 \text{ \AA}$

Cell parameters from 2407 reflections

$\theta = 3.0\text{--}29.2^\circ$

$\mu = 0.11 \text{ mm}^{-1}$

$T = 293 \text{ K}$

Block, colourless

$0.33 \times 0.28 \times 0.22 \text{ mm}$

Data collection

Bruker SMART APEX CCD
diffractometer

Radiation source: fine-focus sealed tube

Graphite monochromator

φ and ω scans

Absorption correction: multi-scan
(*SADABS*; Sheldrick, 1996)

$T_{\min} = 0.56$, $T_{\max} = 0.81$

4388 measured reflections

2407 independent reflections

1430 reflections with $I > 2\sigma(I)$

$R_{\text{int}} = 0.018$

$\theta_{\max} = 29.2^\circ$, $\theta_{\min} = 2.7^\circ$

$h = -10 \rightarrow 10$

$k = -19 \rightarrow 20$

$l = -7 \rightarrow 12$

Refinement

Refinement on F^2
 Least-squares matrix: full
 $R[F^2 > 2\sigma(F^2)] = 0.040$
 $wR(F^2) = 0.104$
 $S = 0.88$
 2407 reflections
 153 parameters
 0 restraints
 Primary atom site location: structure-invariant
 direct methods

Secondary atom site location: difference Fourier
 map
 Hydrogen site location: inferred from
 neighbouring sites
 H atoms treated by a mixture of independent
 and constrained refinement
 $w = 1/[\sigma^2(F_o^2) + (0.0625P)^2]$
 where $P = (F_o^2 + 2F_c^2)/3$
 $(\Delta/\sigma)_{\max} < 0.001$
 $\Delta\rho_{\max} = 0.15 \text{ e } \text{\AA}^{-3}$
 $\Delta\rho_{\min} = -0.21 \text{ e } \text{\AA}^{-3}$

Special details

Geometry. All e.s.d.'s (except the e.s.d. in the dihedral angle between two l.s. planes) are estimated using the full covariance matrix. The cell e.s.d.'s are taken into account individually in the estimation of e.s.d.'s in distances, angles and torsion angles; correlations between e.s.d.'s in cell parameters are only used when they are defined by crystal symmetry. An approximate (isotropic) treatment of cell e.s.d.'s is used for estimating e.s.d.'s involving l.s. planes.

Refinement. Refinement of F^2 against ALL reflections. The weighted R -factor wR and goodness of fit S are based on F^2 , conventional R -factors R are based on F , with F set to zero for negative F^2 . The threshold expression of $F^2 > \sigma(F^2)$ is used only for calculating R -factors(gt) *etc.* and is not relevant to the choice of reflections for refinement. R -factors based on F^2 are statistically about twice as large as those based on F , and R -factors based on ALL data will be even larger.

Fractional atomic coordinates and isotropic or equivalent isotropic displacement parameters (\AA^2)

	x	y	z	$U_{\text{iso}}^*/U_{\text{eq}}$
C1	0.41911 (19)	-0.16151 (10)	1.11954 (17)	0.0528 (4)
H1	0.4944	-0.1975	1.1858	0.063*
C2	0.31545 (19)	-0.18758 (10)	0.99079 (18)	0.0532 (4)
H2A	0.3044	-0.2452	0.9508	0.064*
C3	0.27630 (15)	-0.04284 (9)	1.01806 (14)	0.0382 (3)
C4	0.21609 (15)	0.04875 (9)	0.99206 (14)	0.0375 (3)
C5	0.11719 (17)	0.07305 (9)	0.85184 (15)	0.0475 (4)
H5	0.0869	0.0302	0.7756	0.057*
C6	0.0641 (2)	0.15982 (10)	0.82541 (19)	0.0591 (4)
H6	-0.0019	0.1753	0.7313	0.071*
C7	0.1073 (2)	0.22399 (10)	0.9361 (2)	0.0626 (5)
H7	0.0726	0.2829	0.9169	0.075*
C8	0.2026 (2)	0.20012 (10)	1.0760 (2)	0.0609 (4)
H8	0.2306	0.2432	1.1521	0.073*
C9	0.25738 (17)	0.11317 (9)	1.10495 (17)	0.0502 (4)
H9	0.3218	0.0979	1.1999	0.060*
N1	0.31081 (15)	0.01630 (11)	0.54668 (14)	0.0575 (4)
N2	0.22881 (14)	-0.11327 (7)	0.92928 (13)	0.0452 (3)
H2	0.1546	-0.1123	0.8455	0.054*
N3	0.39323 (14)	-0.07206 (7)	1.13512 (12)	0.0455 (3)
H3	0.4446	-0.0394	1.2093	0.055*
O1	0.39439 (12)	-0.03171 (7)	0.64925 (11)	0.0619 (3)
O2	0.20267 (15)	-0.01926 (11)	0.44597 (13)	0.0921 (5)
O1W	0.03846 (18)	-0.13296 (8)	0.63882 (14)	0.0607 (3)

O3	0.33396 (17)	0.09768 (10)	0.54776 (15)	0.0860 (4)
HW11	-0.049 (3)	-0.1037 (14)	0.606 (2)	0.090 (7)*
HW12	0.104 (2)	-0.1081 (14)	0.584 (2)	0.097 (8)*

Atomic displacement parameters (Å²)

	U^{11}	U^{22}	U^{33}	U^{12}	U^{13}	U^{23}
C1	0.0531 (9)	0.0454 (9)	0.0587 (10)	0.0079 (7)	0.0078 (7)	0.0124 (7)
C2	0.0587 (9)	0.0372 (8)	0.0638 (10)	0.0043 (7)	0.0121 (7)	0.0023 (7)
C3	0.0371 (7)	0.0404 (7)	0.0367 (7)	-0.0022 (6)	0.0065 (5)	0.0017 (6)
C4	0.0352 (6)	0.0388 (7)	0.0394 (7)	-0.0026 (6)	0.0094 (5)	0.0004 (6)
C5	0.0537 (8)	0.0446 (8)	0.0435 (8)	0.0045 (7)	0.0076 (6)	0.0002 (6)
C6	0.0647 (9)	0.0536 (10)	0.0584 (9)	0.0137 (8)	0.0103 (7)	0.0122 (8)
C7	0.0614 (10)	0.0393 (8)	0.0896 (13)	0.0091 (7)	0.0210 (9)	0.0066 (8)
C8	0.0573 (9)	0.0459 (9)	0.0798 (12)	-0.0053 (8)	0.0140 (8)	-0.0217 (8)
C9	0.0478 (8)	0.0504 (8)	0.0502 (9)	-0.0019 (7)	0.0037 (6)	-0.0079 (7)
N1	0.0460 (7)	0.0799 (11)	0.0466 (8)	0.0057 (7)	0.0090 (6)	0.0068 (7)
N2	0.0488 (7)	0.0375 (6)	0.0461 (7)	-0.0002 (5)	0.0013 (5)	0.0004 (5)
N3	0.0459 (6)	0.0464 (7)	0.0418 (7)	0.0006 (5)	0.0020 (5)	0.0022 (5)
O1	0.0602 (7)	0.0620 (7)	0.0550 (7)	0.0060 (5)	-0.0102 (5)	0.0027 (5)
O2	0.0663 (7)	0.1416 (14)	0.0571 (8)	-0.0208 (8)	-0.0163 (6)	0.0107 (8)
O1W	0.0608 (7)	0.0538 (7)	0.0612 (8)	-0.0042 (6)	-0.0041 (6)	-0.0026 (5)
O3	0.1057 (11)	0.0655 (9)	0.0903 (10)	0.0136 (7)	0.0277 (8)	0.0200 (7)

Geometric parameters (Å, °)

C1—C2	1.337 (2)	C6—H6	0.9300
C1—N3	1.3646 (19)	C7—C8	1.376 (2)
C1—H1	0.9300	C7—H7	0.9300
C2—N2	1.3678 (18)	C8—C9	1.380 (2)
C2—H2A	0.9300	C8—H8	0.9300
C3—N2	1.3274 (17)	C9—H9	0.9300
C3—N3	1.3340 (17)	N1—O3	1.2305 (19)
C3—C4	1.4556 (19)	N1—O2	1.2406 (17)
C4—C9	1.3849 (19)	N1—O1	1.2498 (16)
C4—C5	1.3917 (19)	N2—H2	0.8600
C5—C6	1.372 (2)	N3—H3	0.8600
C5—H5	0.9300	O1W—HW11	0.83 (2)
C6—C7	1.371 (2)	O1W—HW12	0.87 (2)
C2—C1—N3	106.90 (12)	C6—C7—H7	120.4
C2—C1—H1	126.5	C8—C7—H7	120.4
N3—C1—H1	126.5	C7—C8—C9	120.96 (14)
C1—C2—N2	106.88 (13)	C7—C8—H8	119.5
C1—C2—H2A	126.6	C9—C8—H8	119.5
N2—C2—H2A	126.6	C8—C9—C4	119.77 (14)
N2—C3—N3	106.43 (12)	C8—C9—H9	120.1
N2—C3—C4	127.10 (12)	C4—C9—H9	120.1

N3—C3—C4	126.46 (12)	O3—N1—O2	120.86 (15)
C9—C4—C5	118.94 (13)	O3—N1—O1	120.21 (14)
C9—C4—C3	120.88 (12)	O2—N1—O1	118.92 (17)
C5—C4—C3	120.18 (12)	C3—N2—C2	109.92 (11)
C6—C5—C4	120.35 (13)	C3—N2—H2	125.0
C6—C5—H5	119.8	C2—N2—H2	125.0
C4—C5—H5	119.8	C3—N3—C1	109.86 (12)
C7—C6—C5	120.78 (15)	C3—N3—H3	125.1
C7—C6—H6	119.6	C1—N3—H3	125.1
C5—C6—H6	119.6	HW11—O1W—HW12	98.1 (18)
C6—C7—C8	119.18 (14)		

Hydrogen-bond geometry (Å, °)

<i>D</i> —H \cdots <i>A</i>	<i>D</i> —H	H \cdots <i>A</i>	<i>D</i> \cdots <i>A</i>	<i>D</i> —H \cdots <i>A</i>
N2—H2 \cdots O1 <i>W</i>	0.86	1.92	2.753 (2)	163
N3—H3 \cdots O1 ⁱ	0.86	1.94	2.7809 (17)	166
O1 <i>W</i> —HW11 \cdots O2 ⁱⁱ	0.83 (2)	2.21 (2)	2.989 (2)	155.3 (19)
O1 <i>W</i> —HW12 \cdots O2	0.87 (2)	2.07 (2)	2.905 (2)	162.3 (19)

Symmetry codes: (i) $-x+1, -y, -z+2$; (ii) $-x, -y, -z+1$.