

Acta Crystallographica Section E

Structure Reports

Online

ISSN 1600-5368

3-Methyl-5-phenyl-1-(3-phenyl-isoquinolin-1-yl)-1H-pyrazole

F. Nawaz Khan,^a P. Manivel,^a Sriramakrishnaswamy Kone,^a Venkatesha R. Hathwar^b and Seik Weng Ng^{c*}

^aChemistry Division, School of Advanced Sciences, VIT University, Vellore 632014, Tamil Nadu, India, ^bSolid State and Structural Chemistry Unit, Indian Institute of Science, Bangalore 560012, Karnataka, India, and ^cDepartment of Chemistry, University of Malaya, 50603 Kuala Lumpur, Malaysia
Correspondence e-mail: seikweng@um.edu.my

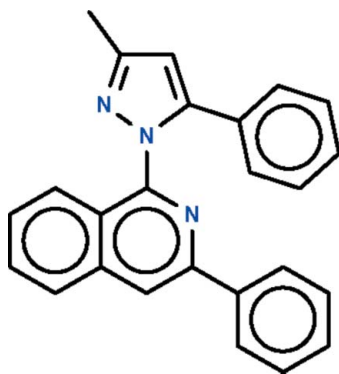
Received 28 December 2009; accepted 30 December 2009

Key indicators: single-crystal X-ray study; $T = 290$ K; mean $\sigma(\text{C}-\text{C}) = 0.004$ Å; R factor = 0.059; wR factor = 0.172; data-to-parameter ratio = 13.6.

The title compound, $\text{C}_{25}\text{H}_{19}\text{N}_3$, is composed of an aryl-substituted pyrazole ring connected to an aryl-substituted isoquinoline ring system with a dihedral angle of $52.7(1)^\circ$ between the pyrazole ring and the isoquinoline ring system. The dihedral angle between the pyrazole ring and the phenyl ring attached to it is $27.4(1)^\circ$ and the dihedral angle between the isoquinoline ring system and the phenyl ring attached to it is $19.6(1)^\circ$.

Related literature

For medicinal applications of hydrazine derivatives, see: Broadhurst *et al.* (2001).



Experimental

Crystal data

$\text{C}_{25}\text{H}_{19}\text{N}_3$	$V = 3926.3(5) \text{ \AA}^3$
$M_r = 361.43$	$Z = 8$
Orthorhombic, $Pbca$	Mo $K\alpha$ radiation
$a = 10.9610(9) \text{ \AA}$	$\mu = 0.07 \text{ mm}^{-1}$
$b = 16.8078(13) \text{ \AA}$	$T = 290 \text{ K}$
$c = 21.3118(17) \text{ \AA}$	$0.42 \times 0.23 \times 0.20 \text{ mm}$

Data collection

Bruker SMART area-detector diffractometer	3452 independent reflections
26302 measured reflections	2031 reflections with $I > 2\sigma(I)$
	$R_{\text{int}} = 0.091$

Refinement

$R[F^2 > 2\sigma(F^2)] = 0.059$	254 parameters
$wR(F^2) = 0.172$	H-atom parameters constrained
$S = 1.04$	$\Delta\rho_{\text{max}} = 0.16 \text{ e \AA}^{-3}$
3452 reflections	$\Delta\rho_{\text{min}} = -0.16 \text{ e \AA}^{-3}$

Data collection: *SMART* (Bruker, 2004); cell refinement: *SAINTE* (Bruker, 2004); data reduction: *SAINTE*; program(s) used to solve structure: *SHELXS97* (Sheldrick, 2008); program(s) used to refine structure: *SHELXL97* (Sheldrick, 2008); molecular graphics: *X-SEED* (Barbour, 2001); software used to prepare material for publication: *publCIF* (Westrip, 2010).

We thank the Department of Science and Technology, India, for use of the diffraction facility at IISc under the IRHPA–DST program. FNK thanks the DST for Fast Track Proposal funding. We thank VIT University and the University of Malaya for supporting this study.

Supplementary data and figures for this paper are available from the IUCr electronic archives (Reference: BT5159).

References

- Barbour, L. J. (2001). *J. Supramol. Chem.* **1**, 189–191.
Broadhurst, M. J., Johnson, W. H. & Walter, D. S. (2001). US Patent No. 6235787.
Bruker (2004). *SAINTE* and *SMART*. Bruker AXS Inc., Madison, Wisconsin, USA.
Sheldrick, G. M. (2008). *Acta Cryst.* **A64**, 112–122.
Westrip, S. P. (2010). *publCIF*. In preparation.

supporting information

Acta Cryst. (2010). E66, o368 [<https://doi.org/10.1107/S160053680905572X>]

3-Methyl-5-phenyl-1-(3-phenylisoquinolin-1-yl)-1*H*-pyrazole

F. Nawaz Khan, P. Manivel, Sriramakrishnaswamy Kone, Venkatesha R. Hathwar and Seik Weng Ng

S1. Experimental

3-Phenylisoquinolin-1-ylhydrazine (2.35 g, 10 mmol) and 1-phenylbutane-1,3-dione (1.62 g, 10 mmol) were dissolved in ethanol (30 ml). The solution was heated for 12 h under a nitrogen atmosphere. The reaction was quenched with water; the compound was extracted with ethyl acetate. The ethyl acetate phase was washed with water, dried, concentrated and purified by column chromatography to yield a white powder. Crystals were obtained upon recrystallization from dichloromethane.

S2. Refinement

Hydrogen atoms were placed in calculated positions (C–H 0.93–0.96 Å) and were included in the refinement in the riding model approximation, with $U(\text{H})$ set to $1.2\text{--}1.5U_{\text{eq}}(\text{C})$.

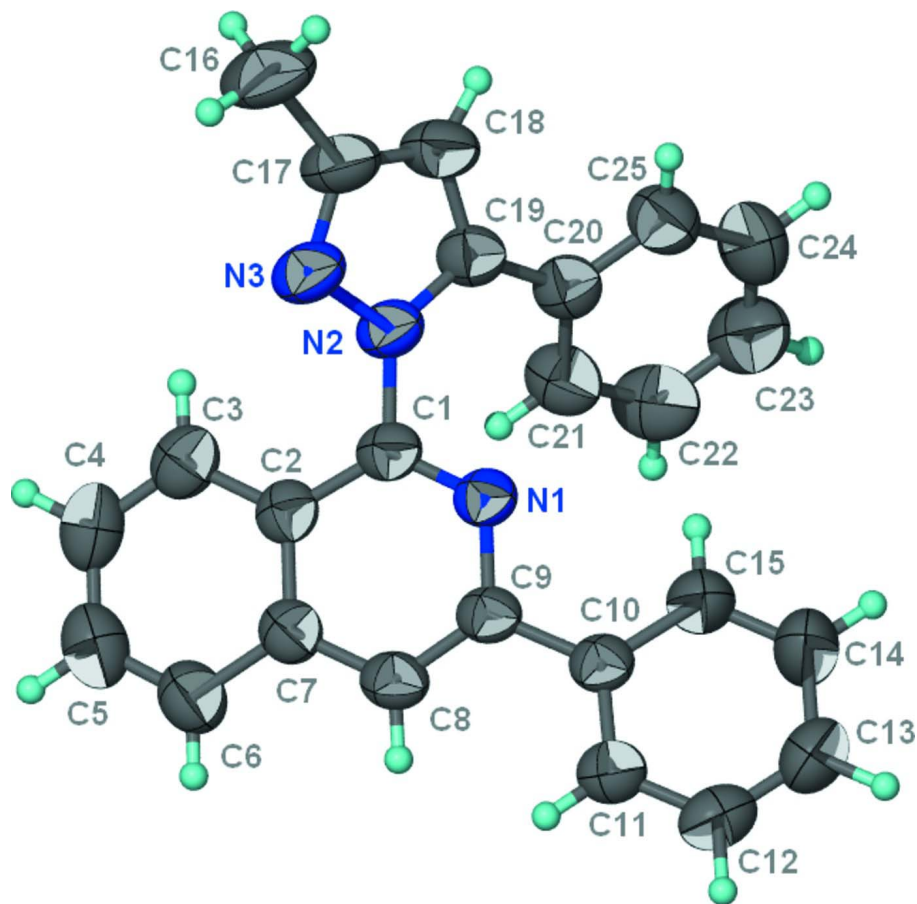


Figure 1

Anisotropic displacement ellipsoid plot (Barbour, 2001) of $C_{25}H_{19}N_3$ at the 50% probability level; hydrogen atoms are drawn as spheres of arbitrary radius.

3-Methyl-5-phenyl-1-(3-phenylisoquinolin-1-yl)-1H-pyrazole

Crystal data

$C_{25}H_{19}N_3$

$M_r = 361.43$

Orthorhombic, *Pbca*

Hall symbol: -P 2ac 2ab

$a = 10.9610$ (9) Å

$b = 16.8078$ (13) Å

$c = 21.3118$ (17) Å

$V = 3926.3$ (5) Å³

$Z = 8$

$F(000) = 1520$

$D_x = 1.223$ Mg m⁻³

Mo $K\alpha$ radiation, $\lambda = 0.71073$ Å

Cell parameters from 1667 reflections

$\theta = 2.4$ – 19.5°

$\mu = 0.07$ mm⁻¹

$T = 290$ K

Block, colorless

$0.42 \times 0.23 \times 0.20$ mm

Data collection

Bruker SMART area-detector
diffractometer

Radiation source: fine-focus sealed tube

Graphite monochromator

φ and ω scans

26302 measured reflections

3452 independent reflections

2031 reflections with $I > 2\sigma(I)$

$R_{int} = 0.091$

$\theta_{max} = 25.0^\circ$, $\theta_{min} = 1.9^\circ$

$h = -13 \rightarrow 13$
 $k = -19 \rightarrow 19$

$l = -25 \rightarrow 25$

Refinement

Refinement on F^2
 Least-squares matrix: full
 $R[F^2 > 2\sigma(F^2)] = 0.059$
 $wR(F^2) = 0.172$
 $S = 1.04$
 3452 reflections
 254 parameters
 0 restraints
 Primary atom site location: structure-invariant
 direct methods

Secondary atom site location: difference Fourier
 map
 Hydrogen site location: inferred from
 neighbouring sites
 H-atom parameters constrained
 $w = 1/[\sigma^2(F_o^2) + (0.0822P)^2 + 0.3609P]$
 where $P = (F_o^2 + 2F_c^2)/3$
 $(\Delta/\sigma)_{\max} = 0.001$
 $\Delta\rho_{\max} = 0.16 \text{ e } \text{\AA}^{-3}$
 $\Delta\rho_{\min} = -0.16 \text{ e } \text{\AA}^{-3}$

Fractional atomic coordinates and isotropic or equivalent isotropic displacement parameters (\AA^2)

	<i>x</i>	<i>y</i>	<i>z</i>	$U_{\text{iso}}^*/U_{\text{eq}}$
N1	0.42399 (17)	0.56804 (11)	0.65341 (8)	0.0632 (5)
N2	0.58627 (17)	0.61748 (12)	0.59624 (9)	0.0707 (6)
N3	0.70861 (18)	0.60123 (14)	0.60212 (10)	0.0846 (7)
C1	0.5164 (2)	0.61722 (15)	0.65309 (11)	0.0634 (6)
C2	0.5528 (2)	0.66672 (14)	0.70362 (11)	0.0633 (6)
C3	0.6493 (2)	0.72259 (17)	0.70207 (14)	0.0799 (8)
H3	0.6940	0.7293	0.6654	0.096*
C4	0.6771 (3)	0.76627 (17)	0.75330 (18)	0.0925 (9)
H4	0.7414	0.8023	0.7517	0.111*
C5	0.6101 (3)	0.75780 (18)	0.80879 (16)	0.0963 (9)
H5	0.6304	0.7881	0.8438	0.116*
C6	0.5156 (3)	0.70560 (18)	0.81196 (14)	0.0876 (8)
H6	0.4713	0.7006	0.8490	0.105*
C7	0.4844 (2)	0.65902 (14)	0.75938 (11)	0.0681 (6)
C8	0.3851 (2)	0.60570 (14)	0.75944 (11)	0.0691 (7)
H8	0.3392	0.5993	0.7958	0.083*
C9	0.3554 (2)	0.56334 (14)	0.70713 (11)	0.0617 (6)
C10	0.2482 (2)	0.50980 (14)	0.70392 (11)	0.0635 (6)
C11	0.1918 (2)	0.48178 (15)	0.75749 (12)	0.0745 (7)
H11	0.2226	0.4958	0.7966	0.089*
C12	0.0904 (3)	0.43317 (16)	0.75384 (15)	0.0858 (8)
H12	0.0538	0.4149	0.7905	0.103*
C13	0.0441 (3)	0.4121 (2)	0.69771 (17)	0.0999 (10)
H13	-0.0241	0.3793	0.6955	0.120*
C14	0.0978 (3)	0.4392 (2)	0.64406 (16)	0.1194 (12)
H14	0.0660	0.4248	0.6052	0.143*
C15	0.1993 (3)	0.4880 (2)	0.64698 (13)	0.0944 (9)
H15	0.2350	0.5062	0.6101	0.113*
C16	0.8797 (3)	0.5726 (3)	0.53211 (16)	0.1305 (13)
H16A	0.9202	0.5639	0.5715	0.196*
H16B	0.9171	0.6166	0.5108	0.196*

H16C	0.8864	0.5257	0.5067	0.196*
C17	0.7463 (2)	0.59087 (19)	0.54383 (14)	0.0888 (8)
C18	0.6524 (3)	0.59926 (17)	0.50078 (13)	0.0849 (8)
H18	0.6579	0.5946	0.4574	0.102*
C19	0.5500 (2)	0.61580 (14)	0.53516 (12)	0.0688 (7)
C20	0.4262 (2)	0.63444 (15)	0.51195 (12)	0.0700 (7)
C21	0.3472 (3)	0.68436 (17)	0.54353 (13)	0.0869 (8)
H21	0.3704	0.7068	0.5816	0.104*
C22	0.2326 (3)	0.7011 (2)	0.51841 (16)	0.1031 (10)
H22	0.1792	0.7335	0.5407	0.124*
C23	0.1976 (3)	0.6712 (2)	0.46237 (18)	0.1081 (10)
H23	0.1214	0.6835	0.4458	0.130*
C24	0.2752 (3)	0.6231 (2)	0.43068 (16)	0.1117 (11)
H24	0.2522	0.6027	0.3919	0.134*
C25	0.3885 (3)	0.60395 (18)	0.45521 (13)	0.0887 (8)
H25	0.4398	0.5700	0.4330	0.106*

Atomic displacement parameters (Å²)

	U^{11}	U^{22}	U^{33}	U^{12}	U^{13}	U^{23}
N1	0.0544 (11)	0.0749 (13)	0.0603 (12)	0.0075 (10)	0.0015 (10)	0.0039 (9)
N2	0.0542 (12)	0.0933 (15)	0.0646 (13)	0.0066 (11)	0.0042 (10)	0.0105 (10)
N3	0.0552 (13)	0.1212 (19)	0.0773 (15)	0.0096 (12)	0.0066 (11)	0.0139 (13)
C1	0.0534 (13)	0.0770 (16)	0.0598 (15)	0.0118 (13)	0.0008 (11)	0.0094 (12)
C2	0.0553 (14)	0.0668 (15)	0.0679 (16)	0.0089 (12)	-0.0046 (12)	0.0053 (12)
C3	0.0663 (16)	0.0801 (18)	0.093 (2)	0.0056 (15)	-0.0055 (14)	0.0093 (15)
C4	0.0795 (19)	0.0796 (19)	0.118 (3)	-0.0061 (15)	-0.0244 (19)	0.0043 (19)
C5	0.100 (2)	0.090 (2)	0.099 (3)	0.0029 (19)	-0.0241 (19)	-0.0117 (17)
C6	0.091 (2)	0.091 (2)	0.081 (2)	0.0016 (18)	-0.0062 (15)	-0.0128 (15)
C7	0.0642 (14)	0.0718 (15)	0.0682 (17)	0.0086 (13)	-0.0041 (13)	-0.0033 (13)
C8	0.0652 (15)	0.0802 (17)	0.0619 (16)	0.0128 (13)	0.0063 (12)	-0.0027 (13)
C9	0.0550 (13)	0.0701 (15)	0.0600 (15)	0.0128 (12)	0.0043 (11)	0.0010 (12)
C10	0.0557 (13)	0.0697 (15)	0.0652 (16)	0.0103 (12)	0.0054 (12)	-0.0026 (12)
C11	0.0721 (16)	0.0797 (17)	0.0717 (17)	0.0030 (14)	0.0063 (14)	0.0030 (13)
C12	0.0782 (18)	0.0835 (18)	0.096 (2)	0.0000 (15)	0.0207 (17)	0.0067 (16)
C13	0.076 (2)	0.113 (2)	0.110 (3)	-0.0224 (17)	0.0062 (18)	-0.002 (2)
C14	0.102 (2)	0.164 (3)	0.092 (2)	-0.051 (2)	-0.0043 (19)	-0.012 (2)
C15	0.0830 (18)	0.129 (3)	0.0713 (18)	-0.0221 (18)	0.0066 (15)	-0.0034 (17)
C16	0.0710 (19)	0.202 (4)	0.119 (3)	0.025 (2)	0.0287 (18)	0.014 (3)
C17	0.0685 (17)	0.121 (2)	0.0765 (19)	0.0118 (16)	0.0171 (15)	0.0141 (17)
C18	0.0853 (19)	0.106 (2)	0.0633 (16)	0.0106 (16)	0.0141 (15)	0.0110 (14)
C19	0.0733 (16)	0.0701 (16)	0.0630 (16)	0.0038 (13)	0.0045 (13)	0.0093 (12)
C20	0.0748 (16)	0.0685 (15)	0.0667 (17)	0.0027 (13)	0.0002 (14)	0.0110 (12)
C21	0.091 (2)	0.093 (2)	0.0768 (18)	0.0228 (17)	-0.0073 (15)	0.0028 (14)
C22	0.097 (2)	0.121 (3)	0.091 (2)	0.0377 (19)	-0.0039 (19)	0.0170 (18)
C23	0.084 (2)	0.144 (3)	0.097 (3)	0.017 (2)	-0.0086 (19)	0.022 (2)
C24	0.101 (2)	0.145 (3)	0.089 (2)	-0.005 (2)	-0.024 (2)	-0.004 (2)
C25	0.089 (2)	0.102 (2)	0.0748 (19)	0.0065 (17)	-0.0030 (16)	-0.0044 (15)

Geometric parameters (Å, °)

N1—C1	1.308 (3)	C12—H12	0.9300
N1—C9	1.372 (3)	C13—C14	1.365 (4)
N2—C19	1.362 (3)	C13—H13	0.9300
N2—N3	1.374 (3)	C14—C15	1.383 (4)
N2—C1	1.433 (3)	C14—H14	0.9300
N3—C17	1.321 (3)	C15—H15	0.9300
C1—C2	1.418 (3)	C16—C17	1.515 (4)
C2—C7	1.411 (3)	C16—H16A	0.9600
C2—C3	1.414 (3)	C16—H16B	0.9600
C3—C4	1.351 (4)	C16—H16C	0.9600
C3—H3	0.9300	C17—C18	1.385 (4)
C4—C5	1.399 (4)	C18—C19	1.370 (3)
C4—H4	0.9300	C18—H18	0.9300
C5—C6	1.359 (4)	C19—C20	1.478 (3)
C5—H5	0.9300	C20—C25	1.377 (3)
C6—C7	1.409 (3)	C20—C21	1.381 (4)
C6—H6	0.9300	C21—C22	1.394 (4)
C7—C8	1.410 (3)	C21—H21	0.9300
C8—C9	1.362 (3)	C22—C23	1.351 (4)
C8—H8	0.9300	C22—H22	0.9300
C9—C10	1.481 (3)	C23—C24	1.355 (5)
C10—C15	1.376 (3)	C23—H23	0.9300
C10—C11	1.381 (3)	C24—C25	1.385 (4)
C11—C12	1.382 (4)	C24—H24	0.9300
C11—H11	0.9300	C25—H25	0.9300
C12—C13	1.347 (4)		
C1—N1—C9	117.7 (2)	C12—C13—H13	120.2
C19—N2—N3	111.61 (19)	C14—C13—H13	120.2
C19—N2—C1	130.7 (2)	C13—C14—C15	120.5 (3)
N3—N2—C1	116.34 (19)	C13—C14—H14	119.7
C17—N3—N2	104.2 (2)	C15—C14—H14	119.8
N1—C1—C2	125.8 (2)	C10—C15—C14	120.7 (3)
N1—C1—N2	114.9 (2)	C10—C15—H15	119.6
C2—C1—N2	119.3 (2)	C14—C15—H15	119.6
C7—C2—C3	118.5 (2)	C17—C16—H16A	109.5
C7—C2—C1	115.9 (2)	C17—C16—H16B	109.5
C3—C2—C1	125.6 (2)	H16A—C16—H16B	109.5
C4—C3—C2	120.7 (3)	C17—C16—H16C	109.5
C4—C3—H3	119.6	H16A—C16—H16C	109.5
C2—C3—H3	119.6	H16B—C16—H16C	109.5
C3—C4—C5	120.6 (3)	N3—C17—C18	112.2 (2)
C3—C4—H4	119.7	N3—C17—C16	118.9 (3)
C5—C4—H4	119.7	C18—C17—C16	128.9 (3)
C6—C5—C4	120.5 (3)	C19—C18—C17	106.0 (2)
C6—C5—H5	119.7	C19—C18—H18	127.0

C4—C5—H5	119.7	C17—C18—H18	127.0
C5—C6—C7	120.3 (3)	N2—C19—C18	106.0 (2)
C5—C6—H6	119.9	N2—C19—C20	125.7 (2)
C7—C6—H6	119.9	C18—C19—C20	128.1 (2)
C8—C7—C2	118.0 (2)	C25—C20—C21	117.8 (3)
C8—C7—C6	122.7 (2)	C25—C20—C19	119.4 (2)
C2—C7—C6	119.3 (2)	C21—C20—C19	122.8 (2)
C9—C8—C7	121.1 (2)	C20—C21—C22	120.0 (3)
C9—C8—H8	119.5	C20—C21—H21	120.0
C7—C8—H8	119.5	C22—C21—H21	120.0
C8—C9—N1	121.5 (2)	C23—C22—C21	121.4 (3)
C8—C9—C10	123.0 (2)	C23—C22—H22	119.3
N1—C9—C10	115.5 (2)	C21—C22—H22	119.3
C15—C10—C11	117.6 (2)	C22—C23—C24	118.9 (3)
C15—C10—C9	120.8 (2)	C22—C23—H23	120.5
C11—C10—C9	121.6 (2)	C24—C23—H23	120.5
C12—C11—C10	121.0 (2)	C23—C24—C25	120.9 (3)
C12—C11—H11	119.5	C23—C24—H24	119.5
C10—C11—H11	119.5	C25—C24—H24	119.5
C13—C12—C11	120.6 (3)	C20—C25—C24	120.9 (3)
C13—C12—H12	119.7	C20—C25—H25	119.5
C11—C12—H12	119.7	C24—C25—H25	119.5
C12—C13—C14	119.6 (3)		
C19—N2—N3—C17	0.9 (3)	N1—C9—C10—C11	161.5 (2)
C1—N2—N3—C17	169.0 (2)	C15—C10—C11—C12	0.4 (4)
C9—N1—C1—C2	0.0 (3)	C9—C10—C11—C12	178.7 (2)
C9—N1—C1—N2	178.25 (18)	C10—C11—C12—C13	-0.1 (4)
C19—N2—C1—N1	42.3 (3)	C11—C12—C13—C14	-0.1 (5)
N3—N2—C1—N1	-123.0 (2)	C12—C13—C14—C15	0.1 (5)
C19—N2—C1—C2	-139.3 (2)	C11—C10—C15—C14	-0.4 (4)
N3—N2—C1—C2	55.3 (3)	C9—C10—C15—C14	-178.7 (3)
N1—C1—C2—C7	2.4 (3)	C13—C14—C15—C10	0.2 (5)
N2—C1—C2—C7	-175.80 (18)	N2—N3—C17—C18	-0.5 (3)
N1—C1—C2—C3	-176.8 (2)	N2—N3—C17—C16	179.2 (3)
N2—C1—C2—C3	5.1 (3)	N3—C17—C18—C19	-0.1 (3)
C7—C2—C3—C4	1.6 (3)	C16—C17—C18—C19	-179.8 (3)
C1—C2—C3—C4	-179.3 (2)	N3—N2—C19—C18	-1.0 (3)
C2—C3—C4—C5	-0.8 (4)	C1—N2—C19—C18	-166.9 (2)
C3—C4—C5—C6	-0.2 (4)	N3—N2—C19—C20	-176.8 (2)
C4—C5—C6—C7	0.4 (4)	C1—N2—C19—C20	17.3 (4)
C3—C2—C7—C8	177.2 (2)	C17—C18—C19—N2	0.6 (3)
C1—C2—C7—C8	-2.0 (3)	C17—C18—C19—C20	176.3 (3)
C3—C2—C7—C6	-1.4 (3)	N2—C19—C20—C25	-156.5 (2)
C1—C2—C7—C6	179.4 (2)	C18—C19—C20—C25	28.6 (4)
C5—C6—C7—C8	-178.1 (2)	N2—C19—C20—C21	26.4 (4)
C5—C6—C7—C2	0.4 (4)	C18—C19—C20—C21	-148.5 (3)
C2—C7—C8—C9	-0.5 (3)	C25—C20—C21—C22	1.3 (4)

C6—C7—C8—C9	178.0 (2)	C19—C20—C21—C22	178.5 (2)
C7—C8—C9—N1	3.1 (3)	C20—C21—C22—C23	-2.0 (5)
C7—C8—C9—C10	-176.8 (2)	C21—C22—C23—C24	1.0 (5)
C1—N1—C9—C8	-2.8 (3)	C22—C23—C24—C25	0.6 (6)
C1—N1—C9—C10	177.05 (19)	C21—C20—C25—C24	0.3 (4)
C8—C9—C10—C15	159.6 (2)	C19—C20—C25—C24	-177.0 (3)
N1—C9—C10—C15	-20.2 (3)	C23—C24—C25—C20	-1.2 (5)
C8—C9—C10—C11	-18.6 (3)		
