

Acta Crystallographica Section E

Structure Reports

Online

ISSN 1600-5368

1-Methyl-3-(4-vinylbenzyl)imidazolium hexafluorophosphate

Xiang-Yong Lu,^a Jia-Feng Sun,^b Lin Zhang^c and Xue-Tai Chen^{a*}

^aState Key Laboratory of Coordination Chemistry, School of Chemistry and Chemical Engineering, Nanjing University, Nanjing 210093, People's Republic of China,

^bDepartment of Materials and Chemical Engineering, Taishan University, Taian 271021, People's Republic of China, and ^cResearch Centre of Laser Fusion, CAEP, Mianyang 621900, People's Republic of China

Correspondence e-mail: xtchen@netra.nju.edu.cn

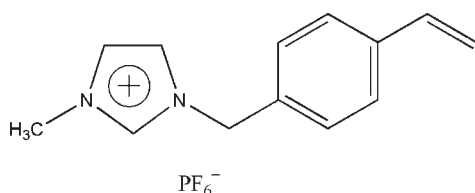
Received 1 January 2010; accepted 5 January 2010

Key indicators: single-crystal X-ray study; $T = 298$ K; mean $\sigma(\text{C}-\text{C}) = 0.004$ Å; R factor = 0.047; wR factor = 0.127; data-to-parameter ratio = 17.7.

In the title compound, $\text{C}_{13}\text{H}_{15}\text{N}_2^+\cdot\text{PF}_6^-$, the dihedral angle between the two aromatic rings is $85.48(7)^\circ$. In the crystal, $\text{C}-\text{H}\cdots\text{F}$ hydrogen bonds connect the imidazolium and hexafluorophosphate ions.

Related literature

For N -heterocyclic carbenes, see: Herrmann (2002). For the synthesis of the title compound, see: Kim *et al.* (2005). For a silver compound with 1-methyl-3-(4-vinylbenzyl)imidazol-2-ylidene, see: Lu *et al.* (2009).



Experimental

Crystal data

$\text{C}_{13}\text{H}_{15}\text{N}_2^+\cdot\text{PF}_6^-$
 $M_r = 344.24$

Orthorhombic, $P2_12_12_1$
 $a = 10.482(2)$ Å

$b = 11.272(3)$ Å
 $c = 12.556(3)$ Å
 $V = 1483.4(6)$ Å³
 $Z = 4$

Mo $K\alpha$ radiation
 $\mu = 0.25$ mm⁻¹
 $T = 298$ K
 $0.32 \times 0.29 \times 0.26$ mm

Data collection

Bruker SMART CCD area-detector diffractometer
Absorption correction: multi-scan (*SADABS*; Bruker, 2005)
 $T_{\min} = 0.925$, $T_{\max} = 0.939$

9185 measured reflections
3542 independent reflections
3407 reflections with $I > 2\sigma(I)$
 $R_{\text{int}} = 0.085$

Refinement

$R[F^2 > 2\sigma(F^2)] = 0.047$
 $wR(F^2) = 0.127$
 $S = 1.03$
3542 reflections
200 parameters
H-atom parameters constrained

$\Delta\rho_{\text{max}} = 0.65$ e Å⁻³
 $\Delta\rho_{\text{min}} = -0.89$ e Å⁻³
Absolute structure: Flack (1983),
1484 Friedel pairs
Flack parameter: 0.05 (13)

Table 1

Hydrogen-bond geometry (Å, °).

$D-H\cdots A$	$D-H$	$H\cdots A$	$D\cdots A$	$D-H\cdots A$
$\text{C4}-\text{H4}\cdots\text{F1}^i$	0.93	2.36	3.266 (3)	164
$\text{C3}-\text{H3}\cdots\text{F6}^{ii}$	0.93	2.25	3.044 (3)	143

Symmetry codes: (i) $-x + \frac{3}{2}, -y + 1, z - \frac{1}{2}$; (ii) $x - \frac{1}{2}, -y + \frac{3}{2}, -z + 1$.

Data collection: *SMART* (Bruker, 2005); cell refinement: *SAINTE* (Bruker, 2005); data reduction: *SAINTE*; program(s) used to solve structure: *SHELXS97* (Sheldrick, 2008); program(s) used to refine structure: *SHELXL97* (Sheldrick, 2008); molecular graphics: *XP* in *SHELXTL* (Sheldrick, 2008); software used to prepare material for publication: *SHELXL97*.

This work was supported by National Natural Science Foundation of China-NSAF (No. 10676012)

Supplementary data and figures for this paper are available from the IUCr electronic archives (Reference: BT5162).

References

- Bruker (2005). *SMART, SAINT, SADABS*. Bruker AXS Inc., Madison, Wisconsin, USA.
- Flack, H. D. (1983). *Acta Cryst.* **A39**, 876–881.
- Herrmann, W. A. (2002). *Angew. Chem. Int. Ed. Engl.* **41**, 1290–1309.
- Kim, J.-H., Kim, J.-W., Shokouhimehr, M. & Lee, Y.-S. (2005). *J. Org. Chem.* **70**, 6714–6720.
- Lu, X.-Y., Chen, F., Xu, W.-F. & Chen, X.-T. (2009). *Inorg. Chim. Acta*, **362**, 5113–5116.
- Sheldrick, G. M. (2008). *Acta Cryst.* **A64**, 112–122.

supporting information

Acta Cryst. (2010). E66, o378 [https://doi.org/10.1107/S1600536810000437]

1-Methyl-3-(4-vinylbenzyl)imidazolium hexafluorophosphate**Xiang-Yong Lu, Jia-Feng Sun, Lin Zhang and Xue-Tai Chen****S1. Comment**

N-heterocyclic carbenes have attracted great attention as they can act as efficient supporting ligands in organometallic chemistry and homogeneous catalysis (Herrmann, 2002). Imidazolium salts are the useful precursors of the N-heterocyclic carbenes. The silver compound with 1-methyl-3-(4-vinylbenzyl)imidazol-2-ylidene has been synthesized (Lu *et al.*, 2009).

The structure of the title compound is shown in Fig. 1. The two aromatic rings enclose a dihedral angle of 85.48 (7)°. The hexafluorophosphate anions are linked to 1-methyl-3-(4-vinylbenzyl)imidazolium cations *via* C—H...F hydrogen bonds (Table 1 and Fig. 2). These interactions stabilize the crystal structure.

S2. Experimental

1-Methyl-3-(4-vinylbenzyl)imidazolium chloride was synthesized according to the literature method (Kim *et al.*, 2005). The resulting white solid (0.70 g, 3.00 mmol) was dissolved in acetone (30 ml) and then potassium hexafluorophosphate (1.38 g, 7.50 mmol) was added. The mixture was stirred at room temperature for 26 h and the solvent was removed under reduced pressure. The residue was then dissolved in distilled water and extracted with CH₂Cl₂. The white solid was obtained after the removal of solvent. Yield: 0.78 g (76%). Anal. Calcd for C₁₃H₁₅F₆N₂P: C, 45.36; H, 4.39; N, 8.14. Found: C, 45.13; H, 4.03; N, 8.35. The elemental analyses were performed with Vario MICRO elemental analyzer.

S3. Refinement

The H-atoms were included in the riding-model approximation with C—H = 0.93 Å and C—H = 0.96 Å, and with $U_{\text{iso}}(\text{H}) = 1.2U_{\text{eq}}(\text{C-aromatic})$ and $U_{\text{iso}}(\text{H}) = 1.5U_{\text{eq}}(\text{C-methyl})$.

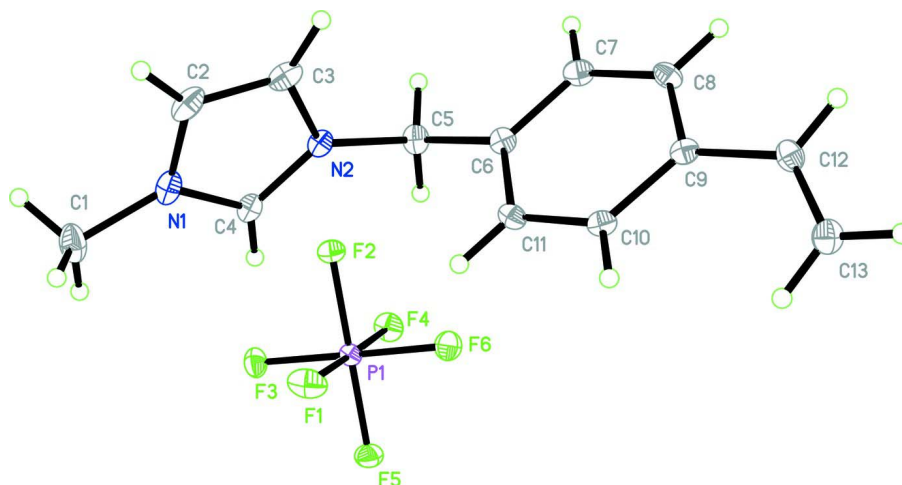


Figure 1

The molecular structure of title compound with atom labels and 30% probability displacement ellipsoids for non-H atoms.

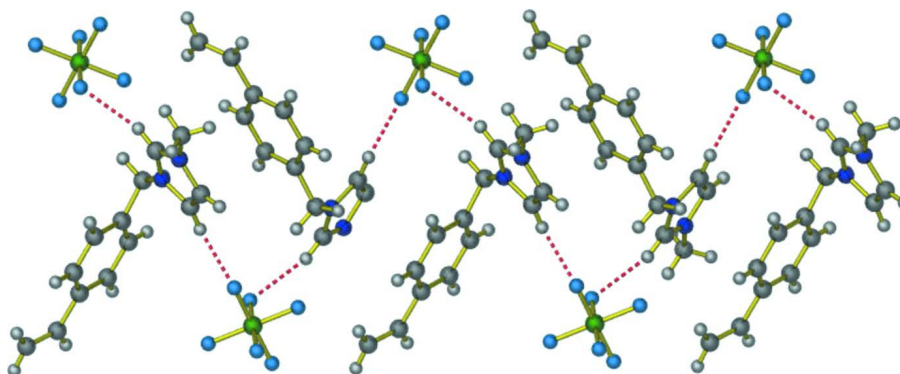


Figure 2

A packing diagram of the title compound. Hydrogen bonds are shown as dashed lines.

1-Methyl-3-(4-vinylbenzyl)imidazolium hexafluorophosphate

Crystal data

$C_{13}H_{15}N_2^+ \cdot PF_6^-$

$M_r = 344.24$

Orthorhombic, $P2_12_12_1$

Hall symbol: P 2ac 2ab

$a = 10.482 (2) \text{ \AA}$

$b = 11.272 (3) \text{ \AA}$

$c = 12.556 (3) \text{ \AA}$

$V = 1483.4 (6) \text{ \AA}^3$

$Z = 4$

$F(000) = 704$

$D_x = 1.541 \text{ Mg m}^{-3}$

Mo $K\alpha$ radiation, $\lambda = 0.71073 \text{ \AA}$

Cell parameters from 6513 reflections

$\theta = 2.4\text{--}28.3^\circ$

$\mu = 0.25 \text{ mm}^{-1}$

$T = 298 \text{ K}$

Block, colorless

$0.32 \times 0.29 \times 0.26 \text{ mm}$

Data collection

Bruker SMART CCD area-detector
diffractometer

Radiation source: fine-focus sealed tube

Graphite monochromator

phi and ω scans

Absorption correction: multi-scan
(*SADABS*; Bruker, 2005)

$T_{\min} = 0.925$, $T_{\max} = 0.939$

9185 measured reflections
 3542 independent reflections
 3407 reflections with $I > 2\sigma(I)$
 $R_{\text{int}} = 0.085$

$\theta_{\text{max}} = 28.3^\circ$, $\theta_{\text{min}} = 2.4^\circ$
 $h = -13 \rightarrow 11$
 $k = -14 \rightarrow 14$
 $l = -16 \rightarrow 14$

Refinement

Refinement on F^2
 Least-squares matrix: full
 $R[F^2 > 2\sigma(F^2)] = 0.047$
 $wR(F^2) = 0.127$
 $S = 1.03$
 3542 reflections
 200 parameters
 0 restraints
 Primary atom site location: structure-invariant
 direct methods
 Secondary atom site location: difference Fourier
 map

Hydrogen site location: inferred from
 neighbouring sites
 H-atom parameters constrained
 $w = 1/[\sigma^2(F_o^2) + (0.0549P)^2 + 1.5672P]$
 where $P = (F_o^2 + 2F_c^2)/3$
 $(\Delta/\sigma)_{\text{max}} < 0.001$
 $\Delta\rho_{\text{max}} = 0.65 \text{ e } \text{\AA}^{-3}$
 $\Delta\rho_{\text{min}} = -0.89 \text{ e } \text{\AA}^{-3}$
 Absolute structure: Flack (1983), 1484 Friedel
 pairs
 Absolute structure parameter: 0.05 (13)

Special details

Geometry. All e.s.d.'s (except the e.s.d. in the dihedral angle between two l.s. planes) are estimated using the full covariance matrix. The cell e.s.d.'s are taken into account individually in the estimation of e.s.d.'s in distances, angles and torsion angles; correlations between e.s.d.'s in cell parameters are only used when they are defined by crystal symmetry. An approximate (isotropic) treatment of cell e.s.d.'s is used for estimating e.s.d.'s involving l.s. planes.

Refinement. Refinement of F^2 against ALL reflections. The weighted R -factor wR and goodness of fit S are based on F^2 , conventional R -factors R are based on F , with F set to zero for negative F^2 . The threshold expression of $F^2 > \sigma(F^2)$ is used only for calculating R -factors(gt) *etc.* and is not relevant to the choice of reflections for refinement. R -factors based on F^2 are statistically about twice as large as those based on F , and R -factors based on ALL data will be even larger.

Fractional atomic coordinates and isotropic or equivalent isotropic displacement parameters (\AA^2)

	x	y	z	$U_{\text{iso}}^*/U_{\text{eq}}$
C1	0.8710 (3)	0.2998 (3)	0.0944 (2)	0.0351 (7)
H1A	0.9248	0.2527	0.1396	0.053*
H1B	0.9017	0.3800	0.0931	0.053*
H1C	0.8722	0.2679	0.0235	0.053*
C2	0.6394 (3)	0.3609 (2)	0.0958 (2)	0.0283 (6)
H2	0.6415	0.4128	0.0382	0.034*
C3	0.5369 (3)	0.3342 (2)	0.1548 (2)	0.0249 (5)
H3	0.4549	0.3641	0.1460	0.030*
C4	0.6999 (3)	0.2335 (2)	0.21741 (19)	0.0204 (5)
H4	0.7497	0.1826	0.2583	0.025*
C5	0.4948 (3)	0.2031 (3)	0.3150 (2)	0.0228 (5)
H5A	0.4678	0.2657	0.3630	0.027*
H5B	0.5440	0.1461	0.3558	0.027*
C6	0.3787 (2)	0.1426 (2)	0.26935 (19)	0.0192 (5)
C7	0.2587 (3)	0.1657 (2)	0.3101 (2)	0.0236 (5)
H7	0.2489	0.2225	0.3632	0.028*
C8	0.1529 (3)	0.1050 (3)	0.2724 (2)	0.0234 (5)
H8	0.0729	0.1216	0.3008	0.028*
C9	0.1643 (2)	0.0194 (2)	0.19242 (19)	0.0191 (5)

C10	0.2861 (2)	-0.0017 (2)	0.14997 (18)	0.0190 (5)
H10	0.2960	-0.0569	0.0956	0.023*
C11	0.3914 (2)	0.0584 (2)	0.1878 (2)	0.0199 (5)
H11	0.4714	0.0429	0.1590	0.024*
C12	0.0501 (3)	-0.0449 (2)	0.1563 (2)	0.0230 (5)
H12	-0.0282	-0.0177	0.1812	0.028*
C13	0.0480 (3)	-0.1377 (3)	0.0917 (2)	0.0260 (5)
H13A	0.1239	-0.1681	0.0647	0.031*
H13B	-0.0294	-0.1725	0.0733	0.031*
F1	0.67298 (19)	0.98396 (17)	0.85265 (12)	0.0364 (4)
F2	0.75104 (15)	0.85036 (13)	0.96990 (13)	0.0245 (3)
F3	0.54994 (15)	0.92291 (15)	0.99001 (14)	0.0297 (4)
F4	0.70480 (17)	0.97546 (17)	1.10592 (12)	0.0305 (4)
F5	0.62797 (17)	1.11050 (14)	0.98847 (14)	0.0309 (4)
F6	0.82848 (16)	1.03763 (16)	0.96874 (17)	0.0359 (4)
N1	0.7402 (2)	0.2980 (2)	0.13540 (17)	0.0247 (5)
N2	0.5760 (2)	0.25420 (19)	0.23092 (17)	0.0191 (4)
P1	0.68904 (6)	0.98115 (6)	0.97936 (5)	0.01785 (15)

Atomic displacement parameters (Å²)

	U^{11}	U^{22}	U^{33}	U^{12}	U^{13}	U^{23}
C1	0.0343 (15)	0.0449 (17)	0.0259 (13)	-0.0109 (14)	0.0098 (12)	-0.0043 (13)
C2	0.0468 (16)	0.0210 (12)	0.0170 (11)	-0.0073 (12)	-0.0057 (12)	0.0022 (10)
C3	0.0371 (14)	0.0197 (12)	0.0179 (11)	0.0005 (11)	-0.0092 (11)	0.0012 (9)
C4	0.0257 (12)	0.0206 (12)	0.0149 (10)	-0.0049 (10)	-0.0021 (9)	-0.0001 (8)
C5	0.0254 (12)	0.0298 (13)	0.0130 (10)	-0.0031 (11)	-0.0006 (10)	0.0008 (10)
C6	0.0227 (11)	0.0222 (12)	0.0128 (10)	0.0002 (10)	-0.0020 (9)	0.0007 (9)
C7	0.0295 (13)	0.0235 (12)	0.0180 (10)	0.0022 (11)	0.0003 (10)	-0.0052 (10)
C8	0.0218 (12)	0.0274 (13)	0.0212 (11)	0.0045 (10)	0.0049 (10)	-0.0042 (10)
C9	0.0244 (12)	0.0188 (11)	0.0142 (9)	0.0014 (9)	-0.0009 (9)	0.0024 (9)
C10	0.0266 (12)	0.0191 (12)	0.0114 (9)	0.0024 (9)	0.0013 (9)	-0.0005 (8)
C11	0.0197 (11)	0.0246 (12)	0.0154 (10)	0.0046 (10)	0.0016 (9)	0.0024 (9)
C12	0.0210 (11)	0.0288 (13)	0.0192 (11)	-0.0004 (10)	0.0015 (10)	0.0016 (10)
C13	0.0262 (12)	0.0297 (14)	0.0223 (12)	-0.0030 (11)	-0.0030 (10)	-0.0017 (11)
F1	0.0519 (11)	0.0436 (10)	0.0136 (7)	0.0145 (9)	-0.0002 (7)	-0.0030 (7)
F2	0.0282 (8)	0.0221 (7)	0.0234 (7)	0.0037 (6)	-0.0019 (7)	-0.0001 (6)
F3	0.0214 (7)	0.0343 (9)	0.0336 (9)	-0.0042 (6)	-0.0004 (7)	0.0058 (7)
F4	0.0384 (9)	0.0382 (9)	0.0149 (7)	0.0029 (8)	0.0031 (6)	0.0037 (6)
F5	0.0343 (8)	0.0240 (8)	0.0343 (9)	0.0064 (7)	0.0045 (8)	0.0040 (7)
F6	0.0238 (8)	0.0317 (9)	0.0521 (11)	-0.0055 (7)	-0.0052 (8)	-0.0098 (8)
N1	0.0333 (12)	0.0256 (11)	0.0153 (9)	-0.0103 (10)	0.0007 (9)	-0.0018 (9)
N2	0.0234 (10)	0.0191 (10)	0.0147 (9)	-0.0025 (8)	-0.0026 (8)	0.0011 (8)
P1	0.0191 (3)	0.0204 (3)	0.0141 (3)	0.0009 (2)	-0.0008 (2)	0.0002 (2)

Geometric parameters (Å, °)

C1—N1	1.464 (4)	C7—H7	0.9300
C1—H1A	0.9600	C8—C9	1.398 (4)
C1—H1B	0.9600	C8—H8	0.9300
C1—H1C	0.9600	C9—C10	1.404 (3)
C2—C3	1.339 (4)	C9—C12	1.471 (4)
C2—N1	1.367 (4)	C10—C11	1.379 (4)
C2—H2	0.9300	C10—H10	0.9300
C3—N2	1.377 (3)	C11—H11	0.9300
C3—H3	0.9300	C12—C13	1.324 (4)
C4—N1	1.330 (3)	C12—H12	0.9300
C4—N2	1.330 (3)	C13—H13A	0.9300
C4—H4	0.9300	C13—H13B	0.9300
C5—N2	1.473 (3)	F1—P1	1.6001 (17)
C5—C6	1.508 (4)	F2—P1	1.6156 (16)
C5—H5A	0.9700	F3—P1	1.6046 (17)
C5—H5B	0.9700	F4—P1	1.5988 (16)
C6—C7	1.383 (4)	F5—P1	1.5964 (17)
C6—C11	1.403 (4)	F6—P1	1.5998 (18)
C7—C8	1.387 (4)		
N1—C1—H1A	109.5	C11—C10—C9	120.9 (2)
N1—C1—H1B	109.5	C11—C10—H10	119.5
H1A—C1—H1B	109.5	C9—C10—H10	119.5
N1—C1—H1C	109.5	C10—C11—C6	120.5 (2)
H1A—C1—H1C	109.5	C10—C11—H11	119.7
H1B—C1—H1C	109.5	C6—C11—H11	119.7
C3—C2—N1	107.6 (2)	C13—C12—C9	126.3 (3)
C3—C2—H2	126.2	C13—C12—H12	116.9
N1—C2—H2	126.2	C9—C12—H12	116.9
C2—C3—N2	107.0 (3)	C12—C13—H13A	120.0
C2—C3—H3	126.5	C12—C13—H13B	120.0
N2—C3—H3	126.5	H13A—C13—H13B	120.0
N1—C4—N2	108.3 (2)	C4—N1—C2	108.6 (2)
N1—C4—H4	125.9	C4—N1—C1	125.3 (3)
N2—C4—H4	125.9	C2—N1—C1	126.0 (3)
N2—C5—C6	111.8 (2)	C4—N2—C3	108.5 (2)
N2—C5—H5A	109.3	C4—N2—C5	125.9 (2)
C6—C5—H5A	109.3	C3—N2—C5	125.6 (2)
N2—C5—H5B	109.3	F5—P1—F4	90.40 (10)
C6—C5—H5B	109.3	F5—P1—F6	90.51 (10)
H5A—C5—H5B	107.9	F4—P1—F6	90.25 (10)
C7—C6—C11	118.9 (2)	F5—P1—F1	90.63 (10)
C7—C6—C5	120.6 (2)	F4—P1—F1	178.83 (11)
C11—C6—C5	120.5 (2)	F6—P1—F1	90.30 (11)
C6—C7—C8	120.6 (2)	F5—P1—F3	90.19 (10)
C6—C7—H7	119.7	F4—P1—F3	89.69 (10)

C8—C7—H7	119.7	F6—P1—F3	179.30 (10)
C7—C8—C9	121.2 (2)	F1—P1—F3	89.74 (10)
C7—C8—H8	119.4	F5—P1—F2	179.86 (11)
C9—C8—H8	119.4	F4—P1—F2	89.71 (9)
C8—C9—C10	117.8 (2)	F6—P1—F2	89.39 (9)
C8—C9—C12	119.5 (2)	F1—P1—F2	89.27 (9)
C10—C9—C12	122.7 (2)	F3—P1—F2	89.91 (9)

Hydrogen-bond geometry (Å, °)

<i>D</i> —H \cdots <i>A</i>	<i>D</i> —H	H \cdots <i>A</i>	<i>D</i> \cdots <i>A</i>	<i>D</i> —H \cdots <i>A</i>
C4—H4 \cdots F1 ⁱ	0.93	2.36	3.266 (3)	164
C3—H3 \cdots F6 ⁱⁱ	0.93	2.25	3.044 (3)	143

Symmetry codes: (i) $-x+3/2, -y+1, z-1/2$; (ii) $x-1/2, -y+3/2, -z+1$.