

Acta Crystallographica Section E

Structure Reports

Online

ISSN 1600-5368

3-[2-(2,3-Dioxindolin-1-yl)ethyl]-1,3-oxazolidin-2-one

Abdusalam Al Subari,^a Rachid Bouhfid,^b Hafid Zouihri,^c El Mokhtar Essassi^a and Seik Weng Ng^{d*}

^aLaboratoire de Chimie Organique Hétérocyclique, Pôle de Compétences Pharmacochimie, Université Mohammed V-Agdal, BP 1014 Avenue Ibn Batout, Rabat, Morocco, ^bInstitute of Nanomaterials and Nanotechnology, Avenue de l'Armée Royale, Madinat El Irfane, 10100 Rabat, Morocco, ^cCNRST Division of UATRS Angle Allal Fassi/FAR, BP 8027 Hay Riad, 10000 Rabat, Morocco, and ^dDepartment of Chemistry, University of Malaya, 50603 Kuala Lumpur, Malaysia
Correspondence e-mail: seikweng@um.edu.my

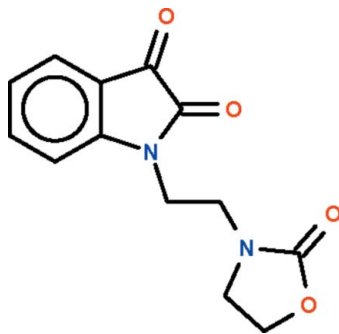
Received 20 January 2010; accepted 20 January 2010

Key indicators: single-crystal X-ray study; $T = 293$ K; mean $\sigma(\text{C}-\text{C}) = 0.002$ Å; R factor = 0.037; wR factor = 0.129; data-to-parameter ratio = 16.6.

In the title compound, $\text{C}_{13}\text{H}_{12}\text{N}_2\text{O}_4$, the almost planar (r.m.s. deviation = 0.012 Å) dioxindolinyl unit and the envelope-shaped oxazolidine ring (with the methylene C atom bonded to the N atom as the flap) are linked by a $-\text{CH}_2-\text{CH}_2-$ bridge, in which the $\text{N}-\text{C}-\text{C}-\text{N}$ unit adopts a *gauche* conformation [torsion angle = 62.7 (2)°].

Related literature

For the synthesis of compounds with dioxindolinyl and oxazolidinyl units, see: Alsubari *et al.* (2009); Bouhfid *et al.* (2008).



Experimental

Crystal data

$\text{C}_{13}\text{H}_{12}\text{N}_2\text{O}_4$
 $M_r = 260.25$
 Triclinic, $P\bar{1}$
 $a = 7.1198$ (2) Å
 $b = 7.4694$ (2) Å
 $c = 12.0319$ (3) Å
 $\alpha = 83.338$ (2)°
 $\beta = 79.084$ (2)°
 $\gamma = 81.372$ (2)°
 $V = 618.64$ (3) Å³
 $Z = 2$
 Mo $K\alpha$ radiation
 $\mu = 0.11$ mm⁻¹
 $T = 293$ K
 $0.3 \times 0.3 \times 0.3$ mm

Data collection

Bruker APEXII diffractometer
 16105 measured reflections
 2856 independent reflections
 2105 reflections with $I > 2\sigma(I)$
 $R_{\text{int}} = 0.029$

Refinement

$R[F^2 > 2\sigma(F^2)] = 0.037$
 $wR(F^2) = 0.129$
 $S = 1.07$
 2856 reflections
 172 parameters
 H-atom parameters constrained
 $\Delta\rho_{\text{max}} = 0.15$ e Å⁻³
 $\Delta\rho_{\text{min}} = -0.22$ e Å⁻³

Data collection: *APEX2* (Bruker, 2005); cell refinement: *SAINT* (Bruker, 2005); data reduction: *SAINT*; program(s) used to solve structure: *SHELXS97* (Sheldrick, 2008); program(s) used to refine structure: *SHELXL97* (Sheldrick, 2008); molecular graphics: *X-SEED* (Barbour, 2001); software used to prepare material for publication: *publCIF* (Westrip, 2010).

We thank Université Mohammed V-Agdal and the University of Malaya for supporting this study.

Supplementary data and figures for this paper are available from the IUCr electronic archives (Reference: BT5178).

References

- Alsubari, A., Bouhfid, R. & Essassi, E. M. (2009). *ARKIVOC*, **xii**, 337–346.
 Barbour, L. J. (2001). *J. Supramol. Chem.* **1**, 189–191.
 Bouhfid, R., Joly, N., Ohmani, F., Essassi, E. M., Lequart, V., Banoub, J., Kheddid, K., Charof, R., Massoui, M. & Martin, P. (2008). *Lett. Org. Chem.* pp. 3–7.
 Bruker (2005). *APEX2* and *SAINT*. Bruker AXS Inc., Madison, Wisconsin, USA.
 Sheldrick, G. M. (2008). *Acta Cryst.* **A64**, 112–122.
 Westrip, S. P. (2010). *publCIF*. In preparation.

supporting information

Acta Cryst. (2010). E66, o454 [https://doi.org/10.1107/S1600536810002576]

3-[2-(2,3-Dioxindolin-1-yl)ethyl]-1,3-oxazolidin-2-one

Abdusalam Al Subari, Rachid Bouhfid, Hafid Zouihri, El Mokhtar Essassi and Seik Weng Ng

S1. Experimental

Indoline-2, 3-dione (1 g, 6.8 mmol), bis(chloroethyl)amine (0.96 g, 6.8 mmol) and potassium carbonate (1 g, 7.2 mmol) along with catalytic amount of tetra-*n*-butylammonium bromide were stirred in DMF (30 ml) for 72 h. After the completion of the reaction (as monitored by TLC), the solid material was removed by filtration and the solvent evaporated under vacuum. Dichloromethane (20 ml) was added and the solution filtered. The solvent was removed and the product purified by recrystallization from ethanol to afford red crystals in 60% yield. The formulation of the product was established by proton and carbon-13 NMR spectroscopy.

S2. Refinement

H-atoms were placed in calculated positions (C—H 0.93–0.97 Å) and were included in the refinement in the riding model approximation, with $U(\text{H})$ set to 1.2–1.5 $U(\text{C})$.

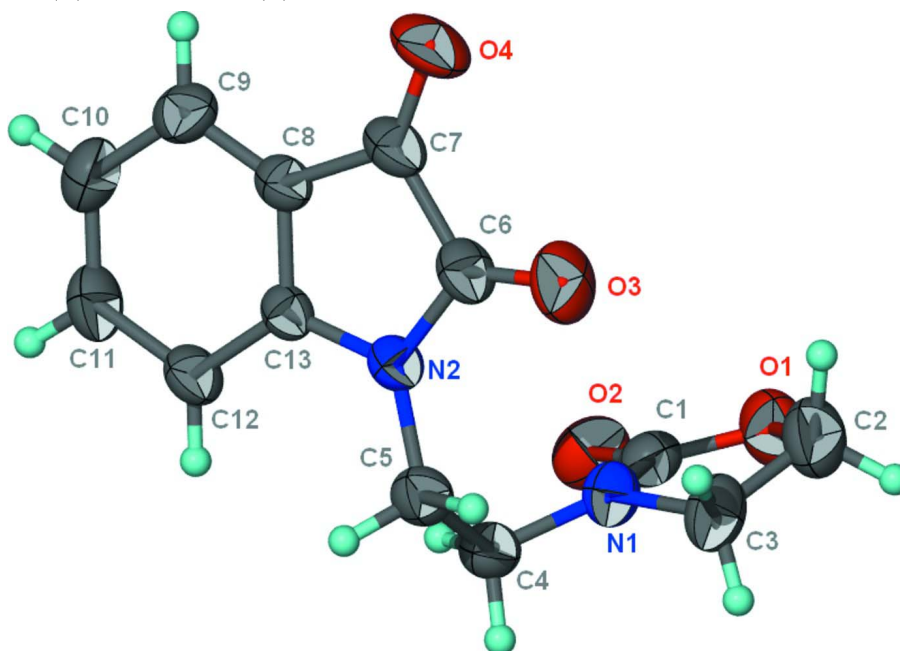


Figure 1

Anisotropic displacement ellipsoid plot (Barbour, 2001) of $\text{C}_{13}\text{H}_{12}\text{N}_2\text{O}_4$ at the 50% probability level; hydrogen atoms are drawn as spheres of an arbitrary radius.

3-[2-(2,3-dioxindolin-1-yl)ethyl]-1,3-oxazolidin-2-one

Crystal data

C₁₃H₁₂N₂O₄ $M_r = 260.25$ Triclinic, $P\bar{1}$

Hall symbol: -P 1

 $a = 7.1198$ (2) Å $b = 7.4694$ (2) Å $c = 12.0319$ (3) Å $\alpha = 83.338$ (2)° $\beta = 79.084$ (2)° $\gamma = 81.372$ (2)° $V = 618.64$ (3) Å³ $Z = 2$ $F(000) = 272$ $D_x = 1.397$ Mg m⁻³Mo $K\alpha$ radiation, $\lambda = 0.71073$ Å

Cell parameters from 4652 reflections

 $\theta = 2.7$ – 25.5 ° $\mu = 0.11$ mm⁻¹ $T = 293$ K

Block, red

 $0.3 \times 0.3 \times 0.3$ mm

Data collection

Bruker APEXII

diffractometer

Radiation source: fine-focus sealed tube

Graphite monochromator

 φ and ω scans

16105 measured reflections

2856 independent reflections

2105 reflections with $I > 2\sigma(I)$ $R_{\text{int}} = 0.029$ $\theta_{\text{max}} = 27.5$ °, $\theta_{\text{min}} = 1.7$ ° $h = -9 \rightarrow 9$ $k = -9 \rightarrow 9$ $l = -15 \rightarrow 15$

Refinement

Refinement on F^2

Least-squares matrix: full

 $R[F^2 > 2\sigma(F^2)] = 0.037$ $wR(F^2) = 0.129$ $S = 1.07$

2856 reflections

172 parameters

0 restraints

Primary atom site location: structure-invariant

direct methods

Secondary atom site location: difference Fourier map

Hydrogen site location: inferred from neighbouring sites

H-atom parameters constrained

 $w = 1/[\sigma^2(F_o^2) + (0.0678P)^2 + 0.0776P]$ where $P = (F_o^2 + 2F_c^2)/3$ $(\Delta/\sigma)_{\text{max}} = 0.001$ $\Delta\rho_{\text{max}} = 0.15$ e Å⁻³ $\Delta\rho_{\text{min}} = -0.22$ e Å⁻³Fractional atomic coordinates and isotropic or equivalent isotropic displacement parameters (Å²)

	<i>x</i>	<i>y</i>	<i>z</i>	$U_{\text{iso}}^*/U_{\text{eq}}$
O1	0.52252 (19)	0.72705 (19)	0.96655 (11)	0.0698 (4)
O2	0.62176 (17)	0.59350 (18)	0.80356 (10)	0.0650 (4)
O3	0.0398 (2)	1.06952 (18)	0.81418 (11)	0.0710 (4)
O4	0.1729 (2)	1.32239 (15)	0.61954 (12)	0.0735 (4)
N1	0.30085 (18)	0.66870 (17)	0.87600 (10)	0.0465 (3)
N2	0.13257 (17)	0.86176 (15)	0.67978 (10)	0.0409 (3)
C1	0.4910 (2)	0.6559 (2)	0.87395 (13)	0.0485 (4)
C2	0.3389 (3)	0.8000 (3)	1.02957 (17)	0.0723 (5)
H2A	0.3186	0.9316	1.0167	0.087*
H2B	0.3325	0.7662	1.1104	0.087*
C3	0.1916 (3)	0.7179 (3)	0.98519 (14)	0.0599 (4)
H3A	0.1523	0.6121	1.0337	0.072*
H3B	0.0788	0.8053	0.9766	0.072*

C4	0.2235 (2)	0.5789 (2)	0.79784 (13)	0.0472 (4)
H4A	0.1725	0.4711	0.8374	0.057*
H4B	0.3267	0.5405	0.7369	0.057*
C5	0.0649 (2)	0.7017 (2)	0.74742 (13)	0.0470 (4)
H5A	0.0116	0.6330	0.7000	0.056*
H5B	-0.0378	0.7404	0.8085	0.056*
C6	0.1067 (2)	1.0296 (2)	0.71898 (13)	0.0477 (4)
C7	0.1775 (2)	1.16148 (19)	0.61515 (14)	0.0482 (4)
C8	0.2403 (2)	1.04883 (18)	0.52062 (12)	0.0408 (3)
C9	0.3139 (2)	1.0915 (2)	0.40725 (14)	0.0520 (4)
H9	0.3330	1.2101	0.3797	0.062*
C10	0.3580 (3)	0.9532 (3)	0.33635 (14)	0.0588 (4)
H10	0.4078	0.9783	0.2598	0.071*
C11	0.3288 (2)	0.7779 (2)	0.37813 (14)	0.0563 (4)
H11	0.3589	0.6870	0.3285	0.068*
C12	0.2556 (2)	0.7318 (2)	0.49236 (13)	0.0464 (4)
H12	0.2377	0.6128	0.5198	0.056*
C13	0.21104 (18)	0.87131 (18)	0.56258 (11)	0.0368 (3)

Atomic displacement parameters (Å²)

	U^{11}	U^{22}	U^{33}	U^{12}	U^{13}	U^{23}
O1	0.0697 (8)	0.0806 (9)	0.0668 (8)	-0.0181 (7)	-0.0215 (6)	-0.0121 (7)
O2	0.0485 (7)	0.0773 (8)	0.0623 (8)	-0.0093 (6)	0.0045 (6)	0.0006 (6)
O3	0.0900 (9)	0.0660 (8)	0.0544 (7)	0.0057 (7)	-0.0051 (6)	-0.0280 (6)
O4	0.0969 (10)	0.0341 (6)	0.0964 (10)	-0.0070 (6)	-0.0291 (8)	-0.0164 (6)
N1	0.0461 (7)	0.0516 (7)	0.0404 (7)	-0.0029 (5)	-0.0048 (5)	-0.0079 (5)
N2	0.0463 (7)	0.0356 (6)	0.0416 (6)	-0.0052 (5)	-0.0067 (5)	-0.0086 (5)
C1	0.0532 (9)	0.0461 (8)	0.0448 (8)	-0.0110 (7)	-0.0066 (7)	0.0045 (6)
C2	0.0919 (15)	0.0705 (12)	0.0573 (11)	-0.0044 (10)	-0.0156 (10)	-0.0205 (9)
C3	0.0624 (11)	0.0717 (11)	0.0414 (9)	-0.0004 (8)	-0.0018 (7)	-0.0108 (8)
C4	0.0548 (9)	0.0405 (7)	0.0456 (8)	-0.0087 (6)	-0.0054 (7)	-0.0041 (6)
C5	0.0440 (8)	0.0493 (8)	0.0484 (8)	-0.0124 (6)	-0.0045 (6)	-0.0052 (7)
C6	0.0503 (8)	0.0427 (8)	0.0515 (9)	0.0020 (6)	-0.0125 (7)	-0.0152 (6)
C7	0.0504 (8)	0.0358 (7)	0.0633 (10)	-0.0014 (6)	-0.0220 (7)	-0.0107 (6)
C8	0.0405 (7)	0.0354 (7)	0.0496 (8)	-0.0031 (5)	-0.0170 (6)	-0.0048 (6)
C9	0.0538 (9)	0.0514 (9)	0.0524 (9)	-0.0100 (7)	-0.0186 (7)	0.0082 (7)
C10	0.0612 (10)	0.0749 (12)	0.0403 (9)	-0.0089 (8)	-0.0113 (7)	-0.0011 (8)
C11	0.0608 (10)	0.0628 (10)	0.0471 (9)	0.0019 (8)	-0.0124 (7)	-0.0205 (8)
C12	0.0531 (9)	0.0374 (7)	0.0505 (9)	-0.0023 (6)	-0.0118 (7)	-0.0123 (6)
C13	0.0354 (7)	0.0358 (7)	0.0413 (7)	-0.0026 (5)	-0.0119 (5)	-0.0070 (5)

Geometric parameters (Å, °)

O1—C1	1.357 (2)	C4—H4A	0.9700
O1—C2	1.445 (2)	C4—H4B	0.9700
O2—C1	1.2099 (19)	C5—H5A	0.9700
O3—C6	1.2072 (18)	C5—H5B	0.9700

O4—C7	1.2043 (18)	C6—C7	1.552 (2)
N1—C1	1.339 (2)	C7—C8	1.455 (2)
N1—C4	1.4458 (19)	C8—C9	1.384 (2)
N1—C3	1.4509 (19)	C8—C13	1.394 (2)
N2—C6	1.3652 (18)	C9—C10	1.378 (2)
N2—C13	1.4127 (17)	C9—H9	0.9300
N2—C5	1.4570 (19)	C10—C11	1.378 (3)
C2—C3	1.497 (3)	C10—H10	0.9300
C2—H2A	0.9700	C11—C12	1.397 (2)
C2—H2B	0.9700	C11—H11	0.9300
C3—H3A	0.9700	C12—C13	1.3799 (19)
C3—H3B	0.9700	C12—H12	0.9300
C4—C5	1.518 (2)		
C1—O1—C2	108.70 (14)	N2—C5—H5A	109.0
C1—N1—C4	121.55 (12)	C4—C5—H5A	109.0
C1—N1—C3	111.44 (13)	N2—C5—H5B	109.0
C4—N1—C3	123.13 (13)	C4—C5—H5B	109.0
C6—N2—C13	110.57 (12)	H5A—C5—H5B	107.8
C6—N2—C5	123.66 (13)	O3—C6—N2	127.54 (16)
C13—N2—C5	125.33 (11)	O3—C6—C7	126.54 (14)
O2—C1—N1	128.43 (15)	N2—C6—C7	105.91 (12)
O2—C1—O1	122.25 (16)	O4—C7—C8	131.16 (17)
N1—C1—O1	109.31 (14)	O4—C7—C6	123.49 (15)
O1—C2—C3	105.01 (14)	C8—C7—C6	105.34 (12)
O1—C2—H2A	110.7	C9—C8—C13	121.28 (13)
C3—C2—H2A	110.7	C9—C8—C7	131.54 (14)
O1—C2—H2B	110.7	C13—C8—C7	107.17 (13)
C3—C2—H2B	110.7	C10—C9—C8	118.13 (15)
H2A—C2—H2B	108.8	C10—C9—H9	120.9
N1—C3—C2	100.50 (14)	C8—C9—H9	120.9
N1—C3—H3A	111.7	C11—C10—C9	120.42 (15)
C2—C3—H3A	111.7	C11—C10—H10	119.8
N1—C3—H3B	111.7	C9—C10—H10	119.8
C2—C3—H3B	111.7	C10—C11—C12	122.36 (15)
H3A—C3—H3B	109.4	C10—C11—H11	118.8
N1—C4—C5	112.13 (12)	C12—C11—H11	118.8
N1—C4—H4A	109.2	C13—C12—C11	116.79 (14)
C5—C4—H4A	109.2	C13—C12—H12	121.6
N1—C4—H4B	109.2	C11—C12—H12	121.6
C5—C4—H4B	109.2	C12—C13—C8	121.01 (13)
H4A—C4—H4B	107.9	C12—C13—N2	127.98 (13)
N2—C5—C4	112.80 (12)	C8—C13—N2	111.01 (11)
C4—N1—C1—O2	10.0 (2)	O3—C6—C7—C8	-178.75 (15)
C3—N1—C1—O2	168.48 (16)	N2—C6—C7—C8	0.25 (15)
C4—N1—C1—O1	-170.25 (13)	O4—C7—C8—C9	0.1 (3)
C3—N1—C1—O1	-11.80 (18)	C6—C7—C8—C9	178.84 (14)

C2—O1—C1—O2	176.40 (16)	O4—C7—C8—C13	-178.82 (17)
C2—O1—C1—N1	-3.34 (19)	C6—C7—C8—C13	-0.11 (15)
C1—O1—C2—C3	16.2 (2)	C13—C8—C9—C10	-0.1 (2)
C1—N1—C3—C2	20.76 (19)	C7—C8—C9—C10	-178.89 (15)
C4—N1—C3—C2	178.81 (14)	C8—C9—C10—C11	0.1 (2)
O1—C2—C3—N1	-21.31 (19)	C9—C10—C11—C12	-0.4 (3)
C1—N1—C4—C5	-135.55 (14)	C10—C11—C12—C13	0.7 (2)
C3—N1—C4—C5	68.55 (18)	C11—C12—C13—C8	-0.6 (2)
C6—N2—C5—C4	-99.82 (16)	C11—C12—C13—N2	178.77 (13)
C13—N2—C5—C4	88.45 (16)	C9—C8—C13—C12	0.3 (2)
N1—C4—C5—N2	62.71 (16)	C7—C8—C13—C12	179.42 (13)
C13—N2—C6—O3	178.69 (15)	C9—C8—C13—N2	-179.15 (12)
C5—N2—C6—O3	5.9 (2)	C7—C8—C13—N2	-0.07 (15)
C13—N2—C6—C7	-0.30 (15)	C6—N2—C13—C12	-179.21 (14)
C5—N2—C6—C7	-173.10 (12)	C5—N2—C13—C12	-6.6 (2)
O3—C6—C7—O4	0.1 (3)	C6—N2—C13—C8	0.24 (16)
N2—C6—C7—O4	179.09 (15)	C5—N2—C13—C8	172.90 (12)
