

Acta Crystallographica Section E

Structure Reports

Online

ISSN 1600-5368

N,N-Bis(2-pyridylmethyl)aniline

Jun-Tao Kang, Guan-Hua Wang, Jing-Wei Xu* and Wei Yang*

The State Key Laboratory of Electroanalytical Chemistry, Changchun Institute of Applied Chemistry, Chinese Academy of Sciences, Changchun 130022, People's Republic of China

Correspondence e-mail: jwxu@ciac.jl.cn, yangwei1988@ciac.jl.cn, yangwei1988@ciac.jl.cn

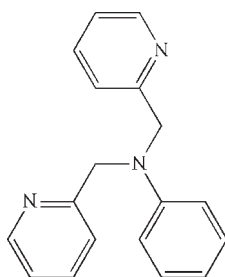
Received 30 December 2009; accepted 15 January 2010

 Key indicators: single-crystal X-ray study; $T = 293$ K; mean $\sigma(\text{C}-\text{C}) = 0.004$ Å; R factor = 0.049; wR factor = 0.117; data-to-parameter ratio = 13.6.

In the title compound, $\text{C}_{18}\text{H}_{17}\text{N}_3$, the two pyridyl rings make a dihedral angle of 54.55 (13)°. The dihedral angles between the phenyl ring and the two pyridyl rings are 73.61 (13) and 81.40 (13)°. In the crystal, weak intermolecular $\text{C}-\text{H}\cdots\pi$ interactions are observed.

Related literature

For bis(pyridin-2-ylmethyl)amine derivatives, see: Komatsu *et al.* (2007); Royzen *et al.* (2006); Xiang & Tong (2006). For related structures, see: Nielsen *et al.* (2005, 2007); Bjernemose *et al.* (2003); Hazell *et al.* (2000); Ugozzoli *et al.* (2002). For the synthesis, see: Foxon *et al.* (2007).



Experimental

Crystal data

$\text{C}_{18}\text{H}_{17}\text{N}_3$
 $M_r = 275.35$
 Monoclinic, $P2_1/c$
 $a = 11.4866$ (19) Å
 $b = 16.811$ (3) Å
 $c = 7.7930$ (12) Å
 $\beta = 101.471$ (3)°

$V = 1474.8$ (4) Å³
 $Z = 4$
 Mo $K\alpha$ radiation
 $\mu = 0.08$ mm⁻¹
 $T = 293$ K
 $0.26 \times 0.17 \times 0.12$ mm

Data collection

Bruker SMART APEX CCD diffractometer
 Absorption correction: multi-scan (SADABS; Sheldrick, 1996)
 $T_{\min} = 0.981$, $T_{\max} = 0.991$

7541 measured reflections
 2591 independent reflections
 1251 reflections with $I > 2\sigma(I)$
 $R_{\text{int}} = 0.057$

Refinement

$R[F^2 > 2\sigma(F^2)] = 0.049$
 $wR(F^2) = 0.117$
 $S = 0.93$
 2591 reflections

190 parameters
 H-atom parameters constrained
 $\Delta\rho_{\text{max}} = 0.14$ e Å⁻³
 $\Delta\rho_{\text{min}} = -0.14$ e Å⁻³

Table 1

Hydrogen-bond geometry (Å, °).

C_{g1} and C_{g2} are the centroids of the C8–C12/N2 and C1–C6 rings, respectively.

$D-H\cdots A$	$D-H$	$H\cdots A$	$D\cdots A$	$D-H\cdots A$
$C7-H7A\cdots C_{g2}^{ii}$	0.97	2.98 (4)	3.825 (3)	146
$C15-H15\cdots C_{g1}^{ii}$	0.93	2.96 (3)	3.619 (4)	129
$C17-H17\cdots C_{g2}^{iii}$	0.93	2.65 (3)	3.530 (3)	159

Symmetry codes: (i) $-x + 1, -y + 1, -z + 2$; (ii) $-x, -y + 1, -z + 2$; (iii) $x, y, z + 1$.

Data collection: SMART (Bruker, 2007); cell refinement: SAINT (Bruker, 2007); data reduction: SAINT; program(s) used to solve structure: SHELXS97 (Sheldrick, 2008); program(s) used to refine structure: SHELXL97 (Sheldrick, 2008); molecular graphics: SHELXTL (Sheldrick, 2008) and Mercury (Macrae *et al.*, 2006); software used to prepare material for publication: SHELXTL.

This work is supported by the State Key Laboratory of Electroanalytical Chemistry, Changchun Institute of Applied Chemistry, Changchun, China.

Supplementary data and figures for this paper are available from the IUCr electronic archives (Reference: IS2511).

References

- Bjernemose, J., Hazell, A., McKenzie, C. J., Mahon, M. F., Nielsen, L. P., Raithby, P. R., Simonsen, O., Toftlund, H. & Wolny, J. A. (2003). *Polyhedron*, **22**, 875–885.
- Bruker (2007). SMART and SAINT. Bruker AXS Inc., Madison, Wisconsin, USA.
- Foxon, S., Xu, J.-Y., Turba, S., Leibold, M., Hampel, F., Heinemann, F. W., Walter, O. W., Ürtel, C., Holthausen, M. & Schindler, S. (2007). *Eur. J. Inorg. Chem.* **3**, 429–443.
- Hazell, A., McKenzie, C. J. & Nielsen, L. P. (2000). *Polyhedron*, **19**, 1333–1338.
- Komatsu, K., Urano, Y., Kojima, H. & Nagano, T. (2007). *J. Am. Chem. Soc.* **129**, 13447–13454.
- Macrae, C. F., Edgington, P. R., McCabe, P., Pidcock, E., Shields, G. P., Taylor, R., Towler, M. & van de Streek, J. (2006). *J. Appl. Cryst.* **39**, 453–457.
- Nielsen, A., Bond, A. D. & McKenzie, C. J. (2005). *Acta Cryst.* **E61**, m478–m480.
- Nielsen, A., Veltze, S., Bond, A. D. & McKenzie, C. J. (2007). *Polyhedron*, **26**, 1649–1657.
- Royzen, M., Durandin, A., Young, V. G., Geacintov, N. E. & Canary, J. W. (2006). *J. Am. Chem. Soc.* **128**, 3854–3855.
- Sheldrick, G. M. (1996). SADABS. University of Göttingen, Germany.
- Sheldrick, G. M. (2008). *Acta Cryst.* **A64**, 112–122.
- Ugozzoli, F., Massera, C., Lanfredi, A. M. M., Marsich, N. & Camus, A. (2002). *Inorg. Chim. Acta*, **340**, 97–104.
- Xiang, Y. & Tong, A.-J. (2006). *Org. Lett.* **8**, 1549–1552.

supporting information

Acta Cryst. (2010). E66, o475 [https://doi.org/10.1107/S1600536810001881]

N,N-Bis(2-pyridylmethyl)aniline

Jun-Tao Kang, Guan-Hua Wang, Jing-Wei Xu and Wei Yang

S1. Comment

Bis(pyridin-2-ylmethyl)amine derivatives are often used as zinc probes (Royzen *et al.*, 2006; Komatsu *et al.*, 2007; Xiang & Tong, 2006). The title compound, *N,N*-bis(pyridin-2-ylmethyl)aniline, has been also used as a ligand in metal complexes (Nielsen *et al.*, 2005, 2007; Bjernemose *et al.*, 2003; Hazell *et al.*, 2000; Ugozzoli *et al.*, 2002). Herein, we report the molecular and crystal structure of this compound. The molecule has three rings trending to different orientations, of which the dihedral angle between the two pyridyl rings is 54.55 (13)°, and the dihedral angles between the phenyl ring and the two pyridyl rings are 73.61 (13) and 81.40 (13)°. Intermolecular C—H \cdots π interactions exist in the crystal, which connect molecules into a two-dimensional layer structure.

S2. Experimental

The title compound was synthesized according to previous reported literature (Foxon *et al.*, 2007). Single crystals suitable for X-ray diffraction were obtained by slow evaporation of a solution of the title compound in acetone at room temperature.

S3. Refinement

H atoms were placed geometrically with C—H distances of 0.93–0.97 Å and refined using a riding model, with $U_{\text{iso}}(\text{H}) = 1.2U_{\text{eq}}(\text{C})$.

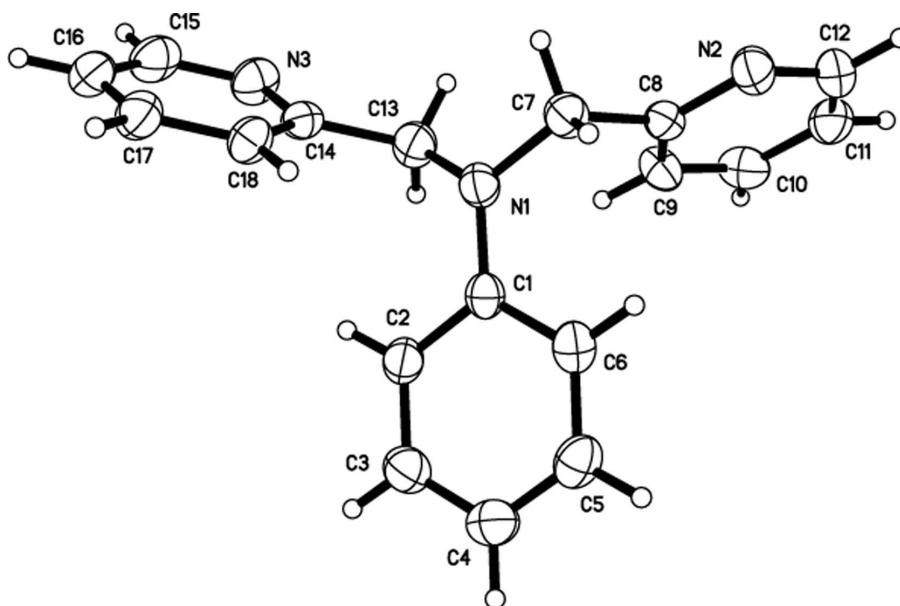


Figure 1

Molecular structure of the title compound. Displacement ellipsoids are drawn at the 30% probability level.

N,N-Bis(2-pyridylmethyl)aniline

Crystal data

$C_{18}H_{17}N_3$

$M_r = 275.35$

Monoclinic, $P2_1/c$

Hall symbol: $-P\ 2_1/c$

$a = 11.4866$ (19) Å

$b = 16.811$ (3) Å

$c = 7.7930$ (12) Å

$\beta = 101.471$ (3)°

$V = 1474.8$ (4) Å³

$Z = 4$

$F(000) = 584$

$D_x = 1.240$ Mg m⁻³

Mo $K\alpha$ radiation, $\lambda = 0.71073$ Å

Cell parameters from 649 reflections

$\theta = 2.4$ – 19.7 °

$\mu = 0.08$ mm⁻¹

$T = 293$ K

Block, colorless

$0.26 \times 0.17 \times 0.12$ mm

Data collection

Bruker SMART APEX CCD
diffractometer

Radiation source: sealed tube

Graphite monochromator

φ and ω scans

Absorption correction: multi-scan

(*SADABS*; Sheldrick, 1996)

$T_{\min} = 0.981$, $T_{\max} = 0.991$

7541 measured reflections

2591 independent reflections

1251 reflections with $I > 2\sigma(I)$

$R_{\text{int}} = 0.057$

$\theta_{\max} = 25.1$ °, $\theta_{\min} = 2.2$ °

$h = -10$ → 13

$k = -19$ → 19

$l = -9$ → 8

Refinement

Refinement on F^2

Least-squares matrix: full

$R[F^2 > 2\sigma(F^2)] = 0.049$

$wR(F^2) = 0.117$

$S = 0.93$

2591 reflections

190 parameters

0 restraints

Primary atom site location: structure-invariant
direct methods

Secondary atom site location: difference Fourier
map

Hydrogen site location: inferred from
neighbouring sites

H-atom parameters constrained

$$w = 1/[\sigma^2(F_o^2) + (0.0459P)^2]$$

$$\text{where } P = (F_o^2 + 2F_c^2)/3$$

$$(\Delta/\sigma)_{\max} < 0.001$$

$$\Delta\rho_{\max} = 0.14 \text{ e } \text{\AA}^{-3}$$

$$\Delta\rho_{\min} = -0.14 \text{ e } \text{\AA}^{-3}$$

Fractional atomic coordinates and isotropic or equivalent isotropic displacement parameters (\AA^2)

	<i>x</i>	<i>y</i>	<i>z</i>	$U_{\text{iso}}^*/U_{\text{eq}}$
N1	0.27837 (18)	0.47311 (12)	0.8924 (2)	0.0521 (6)
N2	0.2502 (2)	0.66652 (12)	0.6656 (3)	0.0633 (6)
N3	0.0590 (2)	0.36999 (13)	1.1010 (3)	0.0649 (6)
C1	0.3652 (2)	0.42824 (15)	0.8353 (3)	0.0472 (6)
C2	0.3695 (2)	0.34558 (15)	0.8561 (3)	0.0559 (7)
H2	0.3130	0.3204	0.9074	0.067*
C3	0.4559 (3)	0.30090 (16)	0.8019 (3)	0.0664 (8)
H3	0.4570	0.2461	0.8183	0.080*
C4	0.5403 (3)	0.33561 (18)	0.7243 (4)	0.0667 (8)
H4	0.5982	0.3049	0.6877	0.080*
C5	0.5375 (2)	0.41657 (18)	0.7018 (3)	0.0630 (8)
H5	0.5941	0.4409	0.6491	0.076*
C6	0.4515 (2)	0.46266 (16)	0.7564 (3)	0.0553 (7)
H6	0.4515	0.5175	0.7401	0.066*
C7	0.2770 (2)	0.55875 (14)	0.8723 (3)	0.0569 (7)
H7A	0.3572	0.5784	0.9120	0.068*
H7B	0.2283	0.5811	0.9487	0.068*
C8	0.2311 (2)	0.58934 (15)	0.6879 (3)	0.0469 (6)
C9	0.1736 (2)	0.54150 (14)	0.5561 (3)	0.0567 (7)
H9	0.1621	0.4878	0.5765	0.068*
C10	0.1332 (2)	0.57366 (17)	0.3930 (3)	0.0648 (8)
H10	0.0940	0.5420	0.3017	0.078*
C11	0.1510 (3)	0.65247 (19)	0.3663 (4)	0.0703 (9)
H11	0.1245	0.6758	0.2573	0.084*
C12	0.2089 (3)	0.69592 (16)	0.5048 (4)	0.0730 (9)
H12	0.2207	0.7498	0.4866	0.088*
C13	0.1675 (2)	0.43629 (15)	0.9124 (3)	0.0588 (7)
H13A	0.1477	0.3955	0.8233	0.071*
H13B	0.1055	0.4763	0.8889	0.071*
C14	0.1647 (2)	0.39913 (13)	1.0875 (3)	0.0470 (7)
C15	0.0517 (3)	0.33528 (16)	1.2541 (5)	0.0745 (9)
H15	-0.0216	0.3153	1.2668	0.089*
C16	0.1452 (3)	0.32745 (16)	1.3924 (4)	0.0713 (9)
H16	0.1360	0.3019	1.4946	0.086*
C17	0.2526 (3)	0.35824 (15)	1.3761 (4)	0.0631 (8)
H17	0.3177	0.3548	1.4683	0.076*
C18	0.2633 (2)	0.39451 (14)	1.2210 (3)	0.0538 (7)
H18	0.3357	0.4155	1.2067	0.065*

Atomic displacement parameters (Å²)

	U^{11}	U^{22}	U^{33}	U^{12}	U^{13}	U^{23}
N1	0.0523 (15)	0.0480 (13)	0.0571 (14)	0.0000 (12)	0.0131 (11)	0.0074 (10)
N2	0.0811 (18)	0.0502 (15)	0.0608 (16)	-0.0035 (12)	0.0198 (13)	0.0024 (11)
N3	0.0521 (16)	0.0707 (16)	0.0754 (18)	-0.0112 (13)	0.0209 (13)	-0.0024 (13)
C1	0.0477 (18)	0.0510 (17)	0.0402 (15)	-0.0018 (14)	0.0025 (12)	0.0056 (12)
C2	0.065 (2)	0.0538 (18)	0.0510 (17)	-0.0028 (15)	0.0166 (14)	0.0048 (13)
C3	0.078 (2)	0.0572 (18)	0.0641 (19)	0.0088 (17)	0.0151 (17)	0.0007 (15)
C4	0.062 (2)	0.075 (2)	0.064 (2)	0.0084 (17)	0.0129 (15)	-0.0038 (15)
C5	0.0474 (19)	0.081 (2)	0.0606 (19)	-0.0089 (17)	0.0098 (14)	0.0056 (16)
C6	0.0490 (17)	0.0583 (17)	0.0554 (17)	-0.0073 (15)	0.0027 (14)	0.0089 (13)
C7	0.067 (2)	0.0516 (17)	0.0518 (17)	0.0031 (14)	0.0115 (14)	0.0003 (12)
C8	0.0492 (17)	0.0454 (16)	0.0465 (16)	0.0047 (13)	0.0104 (12)	0.0013 (13)
C9	0.0641 (19)	0.0460 (15)	0.0554 (18)	0.0047 (14)	0.0007 (14)	0.0014 (14)
C10	0.060 (2)	0.072 (2)	0.0574 (19)	0.0117 (16)	-0.0015 (15)	-0.0101 (15)
C11	0.082 (2)	0.079 (2)	0.053 (2)	0.0183 (18)	0.0200 (17)	0.0141 (17)
C12	0.099 (3)	0.0552 (18)	0.072 (2)	0.0088 (18)	0.0345 (19)	0.0170 (17)
C13	0.0511 (18)	0.0672 (18)	0.0574 (18)	0.0035 (15)	0.0087 (13)	0.0072 (14)
C14	0.0452 (17)	0.0453 (15)	0.0528 (17)	-0.0010 (13)	0.0156 (14)	-0.0046 (12)
C15	0.070 (2)	0.071 (2)	0.094 (3)	-0.0126 (18)	0.043 (2)	-0.0042 (18)
C16	0.091 (3)	0.0649 (19)	0.067 (2)	0.004 (2)	0.037 (2)	0.0013 (16)
C17	0.067 (2)	0.0711 (19)	0.0524 (19)	0.0023 (17)	0.0146 (15)	-0.0002 (14)
C18	0.0471 (18)	0.0613 (18)	0.0550 (18)	-0.0075 (14)	0.0146 (15)	0.0003 (14)

Geometric parameters (Å, °)

N1—C1	1.393 (3)	C7—H7B	0.9700
N1—C7	1.448 (3)	C8—C9	1.367 (3)
N1—C13	1.452 (3)	C9—C10	1.374 (3)
N2—C8	1.333 (3)	C9—H9	0.9300
N2—C12	1.343 (3)	C10—C11	1.363 (3)
N3—C14	1.332 (3)	C10—H10	0.9300
N3—C15	1.346 (3)	C11—C12	1.362 (4)
C1—C6	1.392 (3)	C11—H11	0.9300
C1—C2	1.399 (3)	C12—H12	0.9300
C2—C3	1.376 (3)	C13—C14	1.507 (3)
C2—H2	0.9300	C13—H13A	0.9700
C3—C4	1.372 (4)	C13—H13B	0.9700
C3—H3	0.9300	C14—C18	1.379 (3)
C4—C5	1.372 (3)	C15—C16	1.368 (4)
C4—H4	0.9300	C15—H15	0.9300
C5—C6	1.388 (3)	C16—C17	1.367 (4)
C5—H5	0.9300	C16—H16	0.9300
C6—H6	0.9300	C17—C18	1.381 (3)
C7—C8	1.519 (3)	C17—H17	0.9300
C7—H7A	0.9700	C18—H18	0.9300

C1—N1—C7	119.8 (2)	C8—C9—H9	120.4
C1—N1—C13	120.2 (2)	C10—C9—H9	120.4
C7—N1—C13	116.4 (2)	C11—C10—C9	119.3 (2)
C8—N2—C12	116.3 (2)	C11—C10—H10	120.3
C14—N3—C15	116.6 (2)	C9—C10—H10	120.3
C6—C1—N1	122.3 (2)	C12—C11—C10	117.7 (3)
C6—C1—C2	116.9 (3)	C12—C11—H11	121.1
N1—C1—C2	120.8 (2)	C10—C11—H11	121.1
C3—C2—C1	121.2 (3)	N2—C12—C11	124.6 (3)
C3—C2—H2	119.4	N2—C12—H12	117.7
C1—C2—H2	119.4	C11—C12—H12	117.7
C4—C3—C2	121.3 (3)	N1—C13—C14	116.8 (2)
C4—C3—H3	119.4	N1—C13—H13A	108.1
C2—C3—H3	119.4	C14—C13—H13A	108.1
C3—C4—C5	118.5 (3)	N1—C13—H13B	108.1
C3—C4—H4	120.7	C14—C13—H13B	108.1
C5—C4—H4	120.7	H13A—C13—H13B	107.3
C4—C5—C6	121.0 (3)	N3—C14—C18	123.0 (2)
C4—C5—H5	119.5	N3—C14—C13	114.1 (2)
C6—C5—H5	119.5	C18—C14—C13	122.9 (2)
C5—C6—C1	121.1 (3)	N3—C15—C16	124.2 (3)
C5—C6—H6	119.5	N3—C15—H15	117.9
C1—C6—H6	119.5	C16—C15—H15	117.9
N1—C7—C8	115.68 (19)	C17—C16—C15	118.2 (3)
N1—C7—H7A	108.4	C17—C16—H16	120.9
C8—C7—H7A	108.4	C15—C16—H16	120.9
N1—C7—H7B	108.4	C16—C17—C18	119.2 (3)
C8—C7—H7B	108.4	C16—C17—H17	120.4
H7A—C7—H7B	107.4	C18—C17—H17	120.4
N2—C8—C9	122.8 (2)	C14—C18—C17	118.8 (3)
N2—C8—C7	114.7 (2)	C14—C18—H18	120.6
C9—C8—C7	122.5 (2)	C17—C18—H18	120.6
C8—C9—C10	119.2 (2)		

Hydrogen-bond geometry (\AA , $^\circ$)

Cg1 and Cg2 are the centroids of the C8—C12/N2 and C1—C6 rings, respectively.

$D-H\cdots A$	$D-H$	$H\cdots A$	$D\cdots A$	$D-H\cdots A$
C7—H7A \cdots Cg2 ⁱ	0.97	2.98 (4)	3.825 (3)	146
C15—H15 \cdots Cg1 ⁱⁱ	0.93	2.96 (3)	3.619 (4)	129
C17—H17 \cdots Cg2 ⁱⁱⁱ	0.93	2.65 (3)	3.530 (3)	159

Symmetry codes: (i) $-x+1, -y+1, -z+2$; (ii) $-x, -y+1, -z+2$; (iii) $x, y, z+1$.