

Acta Crystallographica Section E

Structure Reports

Online

ISSN 1600-5368

2,2-Dichloro-1-(2-phenyl-1,3-oxazolidin-3-yl)ethanone

Fei Ye, Ying Fu* and Shuang Zhao

College of Science, Northeast Agricultural University, Harbin 150030, People's Republic of China

Correspondence e-mail: fuying@neau.edu.cn

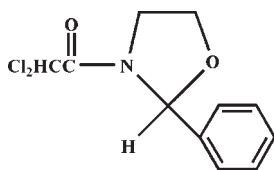
Received 11 January 2010; accepted 19 January 2010

 Key indicators: single-crystal X-ray study; $T = 298$ K; mean $\sigma(\text{C}-\text{C}) = 0.003$ Å; R factor = 0.040; wR factor = 0.110; data-to-parameter ratio = 19.6.

In the title molecule, $\text{C}_{11}\text{H}_{11}\text{Cl}_2\text{NO}_2$, the oxazolidine ring is in an envelope conformation with the O atom forming the flap; the other four essentially planar ring atoms (r.m.s. deviation = 0.012 Å) form a dihedral angle of 91.1 (3)° with the phenyl ring. In the crystal structure, molecules are linked by weak intermolecular C—H...O hydrogen bonds, forming one-dimensional chains.

Related literature

For general background to substituted oxazolidines see: Agami *et al.* (2004); Guirado *et al.* (2003); Tararov *et al.* (2003). For the bioactivity of related compounds, see: Hatzios *et al.* (2004); Daniele *et al.* (2007). For details of the synthesis, see: Fu *et al.* (2009).



Experimental

Crystal data

 $\text{C}_{11}\text{H}_{11}\text{Cl}_2\text{NO}_2$
 $M_r = 260.11$

 Orthorhombic, *Pccn*
 $a = 19.1775$ (13) Å

 $b = 10.6165$ (7) Å

 $c = 11.3723$ (8) Å

 $V = 2315.4$ (3) Å³
 $Z = 8$

 Mo $K\alpha$ radiation

 $\mu = 0.54$ mm⁻¹
 $T = 298$ K

 $0.46 \times 0.38 \times 0.20$ mm

Data collection

 Bruker SMART CCD diffractometer
 Absorption correction: multi-scan (*SADABS*; Sheldrick, 1996)
 $T_{\min} = 0.780$, $T_{\max} = 0.897$

 16860 measured reflections
 2846 independent reflections
 2323 reflections with $I > 2\sigma(I)$
 $R_{\text{int}} = 0.022$

Refinement

 $R[F^2 > 2\sigma(F^2)] = 0.040$
 $wR(F^2) = 0.110$
 $S = 1.04$

2846 reflections

145 parameters

H-atom parameters constrained

 $\Delta\rho_{\text{max}} = 0.41$ e Å⁻³
 $\Delta\rho_{\text{min}} = -0.29$ e Å⁻³
Table 1

Hydrogen-bond geometry (Å, °).

$D-H\cdots A$	$D-H$	$H\cdots A$	$D\cdots A$	$D-H\cdots A$
$\text{C11}-\text{H11}\cdots\text{O2}^i$	0.98	2.40	3.312 (2)	156

 Symmetry code: (i) $-x + 1, y - \frac{1}{2}, -z + \frac{3}{2}$

Data collection: *SMART* (Bruker, 1998); cell refinement: *SAINTE* (Bruker, 1998); data reduction: *SAINTE*; program(s) used to solve structure: *SHELXS97* (Sheldrick, 2008); program(s) used to refine structure: *SHELXL97* (Sheldrick, 2008); molecular graphics: *SHELXTL* (Sheldrick, 2008); software used to prepare material for publication: *SHELXTL*.

We thank the Heilongjiang Province Foundation for Young Scholar (QC2009C44), the China Postdoctoral Science Foundation (20080430951), the Heilongjiang Province Postdoctoral Science Foundation (LBH-Z07012) and the Northeast Agricultural University Doctoral Foundation for generously supporting this study.

Supplementary data and figures for this paper are available from the IUCr electronic archives (Reference: LH2978).

References

- Agami, C. & Couty, F. (2004). *Eur. J. Org. Chem.* **69**, 677–685.
 Bruker (1998). *SMART* and *SAINTE*. Bruker AXS Inc., Madison, Wisconsin, USA.
 Daniele, D. B., Luciano, S. & Luca, E. (2007). *Phytochemistry*, **68**, 2614–2618.
 Fu, Y., Fu, H. G., Ye, F., Mao, J. D. & Wen, X. T. (2009). *Synth. Commun.* **39**, 2454–2463.
 Guirado, A., Andreu, R. & Galvez, J. (2003). *Tetrahedron Lett.* **44**, 3809–3841.
 Hatzios, K. K. (2004). *Weed Sci.* **52**, 454–467.
 Sheldrick, G. M. (1996). *SADABS*. University of Göttingen, Germany.
 Sheldrick, G. M. (2008). *Acta Cryst.* **A64**, 112–122.
 Tararov, V. I., Kadyrov, R., Monsees, A., Riermeier, T. H. & Boerner, A. (2003). *Adv. Synth. Catal.* **345**, 239–245.

supporting information

Acta Cryst. (2010). E66, o445 [https://doi.org/10.1107/S1600536810002461]

2,2-Dichloro-1-(2-phenyl-1,3-oxazolidin-3-yl)ethanone**Fei Ye, Ying Fu and Shuang Zhao****S1. Comment**

Substituted oxazolidines are important synthetic targets due to their biological activity (Agami *et al.*, 2004), pharmacological activity and their extensive use as chiral auxiliaries for the synthesis of many chiral compounds (Guirado *et al.*, 2003; Tararov *et al.* 2003). Dichloroacetamide compounds have been shown to act as herbicide safeners (Hatzios, 2004; Daniele *et al.*, 2007). As part of our ongoing investigations of oxazolidine derivatives we prepared the title compound and its crystal structure is reported herein.

The molecular structure of the title compound is shown in Fig.1. In the crystal structure, molecules are linked by weak intermolecular C—H···O hydrogen bonds to form one-dimensional chains (Fig. 2).

S2. Experimental

The title compound was prepared by a slightly modified literature procedure (Fu *et al.*, 2009).

Ethanolamine (4.1 g, 0.067 mol) and 7.1 g (0.067mol) of benzaldehyde were mixed with 25mL of benzene. The reaction mixture was stirred for 1h at 306-308K. Then, the mixture was heated to reflux and water was evaporated, followed by cooling to 273K and 7.5 mL of 33% sodium hydroxide solution was added. 11.8 g (0.08mol) of dichloroacetyl chloride was added dropwise with stirring, keeping the temperature at 273-277K. Stirring was continued for 1.5h. The mixture was rinsed with water until the pH=7. The organic phase was dried over anhydrous magnesium sulfate and the benzene was removed under vacuum. The crude product was recrystallized with ethyl acetate and light petroleum, white crystals were obtained. The yield was 58.2%. m.p. 374-377K.

The single-crystal suitable for X-ray structural analysis was obtained by slow evaporation of a solution of the title compound in petroleum ether and ethyl acetate at room temperature.

S3. Refinement

All H atoms were initially located in a difference Fourier map. The C—H atoms were then constrained to an ideal geometry, with C-H = 0.93 - 0.98Å and $U_{\text{iso}}(\text{H}) = 1.2U_{\text{eq}}(\text{C})$.

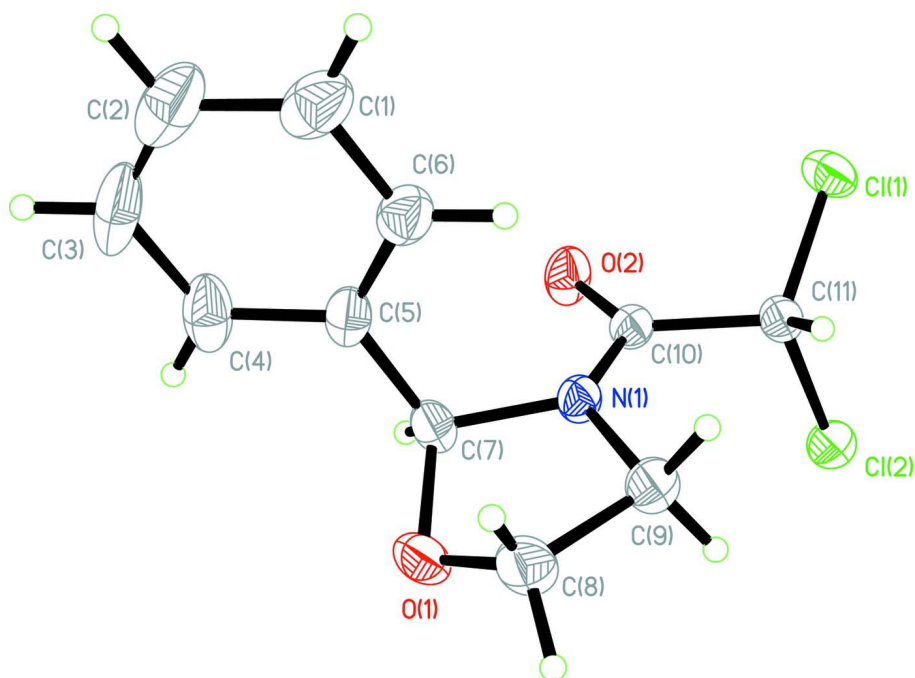


Figure 1

The molecular structure of the title compound, with the atom-labelling scheme. Displacement ellipsoids are drawn at the 30% probability level.

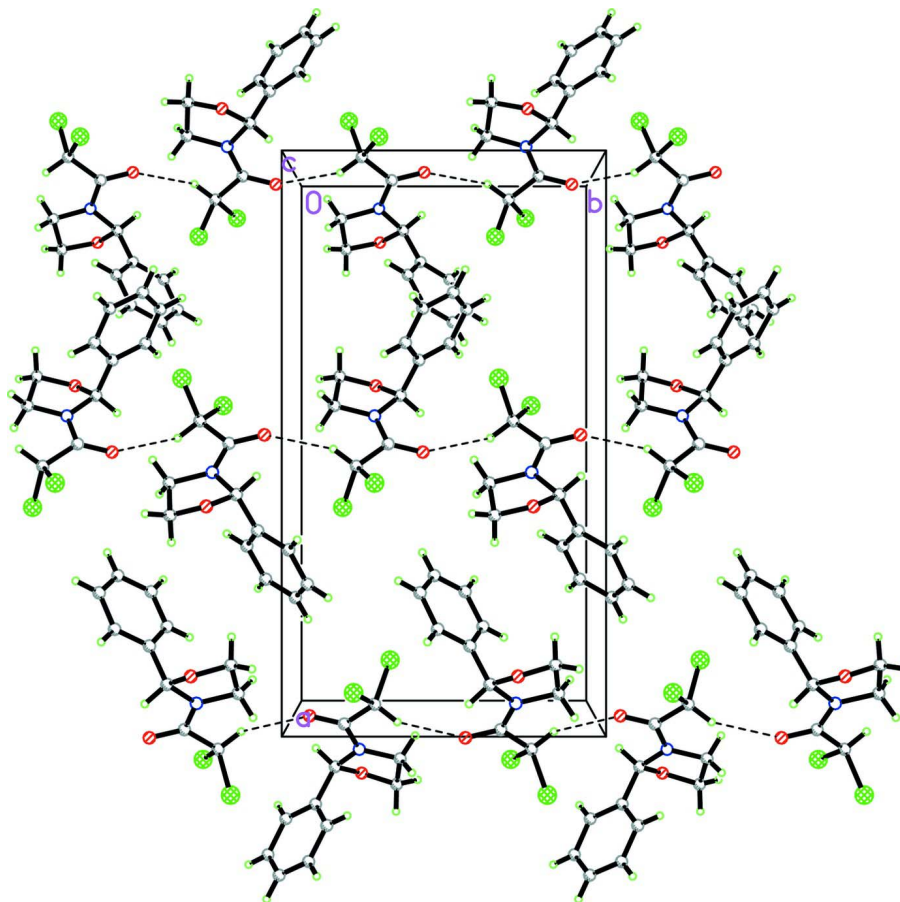


Figure 2

Part of the crystal structure of the title compound showing C-H...O hydrogen bonds as dashed lines.

2,2-Dichloro-1-(2-phenyl-1,3-oxazolidin-3-yl)ethanone

Crystal data

$C_{11}H_{11}Cl_2NO_2$

$M_r = 260.11$

Orthorhombic, *Pccn*

Hall symbol: -P 2ab 2ac

$a = 19.1775$ (13) Å

$b = 10.6165$ (7) Å

$c = 11.3723$ (8) Å

$V = 2315.4$ (3) Å³

$Z = 8$

$F(000) = 1072.0$

$D_x = 1.492$ Mg m⁻³

$D_m = 1.492$ Mg m⁻³

D_m measured by not measured

Mo *K*α radiation, $\lambda = 0.71073$ Å

Cell parameters from 5877 reflections

$\theta = 2.8$ – 27.9°

$\mu = 0.54$ mm⁻¹

$T = 298$ K

Block, colourless

$0.46 \times 0.38 \times 0.20$ mm

Data collection

Bruker SMART CCD
diffractometer

Radiation source: fine-focus sealed tube

Graphite monochromator

φ and ω scans

Absorption correction: multi-scan
(*SADABS*; Sheldrick, 1996)

$T_{\min} = 0.780$, $T_{\max} = 0.897$

16860 measured reflections

2846 independent reflections

2323 reflections with $I > 2\sigma(I)$

$R_{\text{int}} = 0.022$
 $\theta_{\text{max}} = 28.3^\circ$, $\theta_{\text{min}} = 2.8^\circ$
 $h = -25 \rightarrow 25$

$k = -14 \rightarrow 14$
 $l = -15 \rightarrow 15$

Refinement

Refinement on F^2
 Least-squares matrix: full
 $R[F^2 > 2\sigma(F^2)] = 0.040$
 $wR(F^2) = 0.110$
 $S = 1.04$
 2846 reflections
 145 parameters
 0 restraints
 Primary atom site location: structure-invariant
 direct methods

Secondary atom site location: difference Fourier
 map
 Hydrogen site location: inferred from
 neighbouring sites
 H-atom parameters constrained
 $w = 1/[\sigma^2(F_o^2) + (0.0473P)^2 + 1.2513P]$
 where $P = (F_o^2 + 2F_c^2)/3$
 $(\Delta/\sigma)_{\text{max}} < 0.001$
 $\Delta\rho_{\text{max}} = 0.41 \text{ e } \text{\AA}^{-3}$
 $\Delta\rho_{\text{min}} = -0.29 \text{ e } \text{\AA}^{-3}$

Special details

Geometry. All e.s.d.'s (except the e.s.d. in the dihedral angle between two l.s. planes) are estimated using the full covariance matrix. The cell e.s.d.'s are taken into account individually in the estimation of e.s.d.'s in distances, angles and torsion angles; correlations between e.s.d.'s in cell parameters are only used when they are defined by crystal symmetry. An approximate (isotropic) treatment of cell e.s.d.'s is used for estimating e.s.d.'s involving l.s. planes.

Refinement. Refinement of F^2 against ALL reflections. The weighted R -factor wR and goodness of fit S are based on F^2 , conventional R -factors R are based on F , with F set to zero for negative F^2 . The threshold expression of $F^2 > \sigma(F^2)$ is used only for calculating R -factors(gt) *etc.* and is not relevant to the choice of reflections for refinement. R -factors based on F^2 are statistically about twice as large as those based on F , and R -factors based on ALL data will be even larger.

Fractional atomic coordinates and isotropic or equivalent isotropic displacement parameters (\AA^2)

	x	y	z	$U_{\text{iso}}^*/U_{\text{eq}}$
C11	0.43189 (3)	0.78273 (5)	0.61104 (4)	0.05385 (16)
C12	0.38622 (3)	0.67345 (6)	0.83020 (5)	0.06457 (19)
N1	0.54978 (8)	0.77484 (13)	0.88700 (13)	0.0370 (3)
O1	0.60625 (8)	0.77362 (14)	1.06154 (12)	0.0555 (4)
C11	0.46001 (9)	0.72103 (16)	0.74626 (16)	0.0398 (4)
H11	0.4904	0.6483	0.7323	0.048*
C10	0.49952 (9)	0.82044 (15)	0.81777 (15)	0.0372 (4)
O2	0.48479 (8)	0.93204 (12)	0.81157 (14)	0.0554 (4)
C9	0.56836 (10)	0.64244 (17)	0.90877 (18)	0.0468 (4)
H9A	0.5882	0.6034	0.8393	0.056*
H9B	0.5283	0.5940	0.9347	0.056*
C5	0.65059 (10)	0.91874 (17)	0.91330 (18)	0.0469 (4)
C7	0.58735 (10)	0.85716 (17)	0.96905 (16)	0.0431 (4)
H7	0.5557	0.9221	0.9992	0.052*
C6	0.67948 (11)	0.8764 (2)	0.8089 (2)	0.0549 (5)
H6	0.6588	0.8094	0.7696	0.066*
C8	0.62234 (13)	0.65601 (19)	1.0063 (2)	0.0593 (6)
H8A	0.6187	0.5872	1.0620	0.071*
H8B	0.6692	0.6571	0.9741	0.071*
C1	0.73902 (12)	0.9323 (2)	0.7616 (3)	0.0722 (7)
H1	0.7579	0.9027	0.6915	0.087*
C2	0.76916 (14)	1.0306 (3)	0.8190 (3)	0.0880 (10)

H2	0.8087	1.0684	0.7873	0.106*
C3	0.74266 (15)	1.0743 (2)	0.9217 (3)	0.0859 (10)
H3	0.7644	1.1408	0.9602	0.103*
C4	0.68205 (13)	1.0194 (2)	0.9706 (3)	0.0687 (7)
H4	0.6635	1.0503	1.0404	0.082*

Atomic displacement parameters (Å²)

	U^{11}	U^{22}	U^{33}	U^{12}	U^{13}	U^{23}
C11	0.0541 (3)	0.0720 (4)	0.0354 (2)	−0.0010 (2)	−0.00397 (19)	0.0028 (2)
C12	0.0712 (4)	0.0745 (4)	0.0481 (3)	−0.0336 (3)	0.0014 (2)	0.0033 (2)
N1	0.0418 (7)	0.0300 (7)	0.0392 (8)	0.0004 (5)	−0.0036 (6)	−0.0011 (6)
O1	0.0760 (9)	0.0524 (8)	0.0380 (7)	0.0039 (7)	−0.0131 (7)	0.0019 (6)
C11	0.0440 (9)	0.0380 (9)	0.0374 (9)	0.0004 (7)	−0.0043 (7)	−0.0017 (7)
C10	0.0404 (8)	0.0332 (8)	0.0379 (9)	−0.0010 (7)	−0.0017 (7)	0.0010 (7)
O2	0.0669 (9)	0.0311 (6)	0.0684 (9)	0.0031 (6)	−0.0216 (7)	0.0007 (6)
C9	0.0557 (11)	0.0333 (9)	0.0513 (11)	0.0084 (8)	−0.0050 (9)	−0.0002 (7)
C5	0.0479 (10)	0.0323 (8)	0.0604 (12)	0.0007 (7)	−0.0221 (9)	0.0043 (8)
C7	0.0518 (10)	0.0380 (9)	0.0394 (9)	0.0051 (8)	−0.0115 (8)	−0.0054 (7)
C6	0.0491 (10)	0.0543 (12)	0.0614 (13)	−0.0079 (9)	−0.0096 (9)	0.0089 (10)
C8	0.0771 (14)	0.0455 (11)	0.0552 (12)	0.0101 (10)	−0.0184 (11)	0.0056 (9)
C1	0.0502 (12)	0.0794 (16)	0.0871 (18)	−0.0083 (12)	−0.0058 (12)	0.0259 (14)
C2	0.0569 (14)	0.0697 (17)	0.138 (3)	−0.0160 (13)	−0.0268 (17)	0.0369 (19)
C3	0.0719 (16)	0.0409 (11)	0.145 (3)	−0.0149 (11)	−0.0536 (19)	0.0079 (15)
C4	0.0716 (14)	0.0397 (10)	0.0948 (18)	0.0036 (10)	−0.0389 (14)	−0.0066 (11)

Geometric parameters (Å, °)

C11—C11	1.7563 (18)	C5—C4	1.389 (3)
C12—C11	1.7803 (19)	C5—C7	1.517 (3)
N1—C10	1.335 (2)	C7—H7	0.9800
N1—C7	1.468 (2)	C6—C1	1.395 (3)
N1—C9	1.471 (2)	C6—H6	0.9300
O1—C7	1.423 (2)	C8—H8A	0.9700
O1—C8	1.431 (3)	C8—H8B	0.9700
C11—C10	1.533 (2)	C1—C2	1.360 (4)
C11—H11	0.9800	C1—H1	0.9300
C10—O2	1.220 (2)	C2—C3	1.355 (5)
C9—C8	1.524 (3)	C2—H2	0.9300
C9—H9A	0.9700	C3—C4	1.414 (4)
C9—H9B	0.9700	C3—H3	0.9300
C5—C6	1.385 (3)	C4—H4	0.9300
C10—N1—C7	120.89 (14)	O1—C7—H7	109.7
C10—N1—C9	128.35 (15)	N1—C7—H7	109.7
C7—N1—C9	110.07 (14)	C5—C7—H7	109.7
C7—O1—C8	105.92 (14)	C5—C6—C1	121.4 (2)
C10—C11—C11	111.07 (12)	C5—C6—H6	119.3

C10—C11—C12	107.69 (12)	C1—C6—H6	119.3
C11—C11—C12	109.34 (10)	O1—C8—C9	104.80 (16)
C10—C11—H11	109.6	O1—C8—H8A	110.8
C11—C11—H11	109.6	C9—C8—H8A	110.8
C12—C11—H11	109.6	O1—C8—H8B	110.8
O2—C10—N1	123.59 (16)	C9—C8—H8B	110.8
O2—C10—C11	121.57 (16)	H8A—C8—H8B	108.9
N1—C10—C11	114.83 (14)	C2—C1—C6	119.2 (3)
N1—C9—C8	101.35 (15)	C2—C1—H1	120.4
N1—C9—H9A	111.5	C6—C1—H1	120.4
C8—C9—H9A	111.5	C3—C2—C1	121.2 (3)
N1—C9—H9B	111.5	C3—C2—H2	119.4
C8—C9—H9B	111.5	C1—C2—H2	119.4
H9A—C9—H9B	109.3	C2—C3—C4	120.4 (2)
C6—C5—C4	118.5 (2)	C2—C3—H3	119.8
C6—C5—C7	122.59 (17)	C4—C3—H3	119.8
C4—C5—C7	118.9 (2)	C5—C4—C3	119.3 (3)
O1—C7—N1	102.94 (14)	C5—C4—H4	120.3
O1—C7—C5	111.96 (15)	C3—C4—H4	120.3
N1—C7—C5	112.55 (15)		

Hydrogen-bond geometry (Å, °)

<i>D</i> —H \cdots <i>A</i>	<i>D</i> —H	H \cdots <i>A</i>	<i>D</i> \cdots <i>A</i>	<i>D</i> —H \cdots <i>A</i>
C11—H11 \cdots O2 ⁱ	0.98	2.40	3.312 (2)	156

Symmetry code: (i) $-x+1, y-1/2, -z+3/2$.