

Acta Crystallographica Section E

Structure Reports

Online

ISSN 1600-5368

Bis(2,6-diaminopyridinium) hydrogen phthalate nitrate monohydrate

 Akbar Raissi Shabari,^a Maryam Safaeimovahed^a and Mehrdad Pourayoubi^{b*}
^aFaculty of Chemistry, Islamic Azad University-North Tehran Branch, Tehran, Iran, and ^bDepartment of Chemistry, Ferdowsi University of Mashhad, Mashhad 91779, Iran

Correspondence e-mail: mehrdad_pourayoubi@yahoo.com

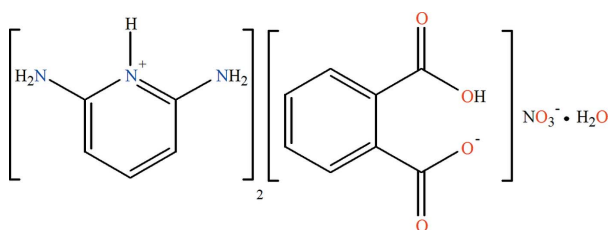
Received 23 January 2010; accepted 2 February 2010

 Key indicators: single-crystal X-ray study; $T = 120$ K; mean $\sigma(\text{C}-\text{C}) = 0.004$ Å; R factor = 0.046; wR factor = 0.093; data-to-parameter ratio = 9.2.

The title hydrated salt, $2\text{C}_5\text{H}_8\text{N}_3^+ \cdot \text{C}_8\text{H}_5\text{O}_4^- \cdot \text{NO}_3^- \cdot \text{H}_2\text{O}$, was obtained fortuitously from the reaction between 2,6-diaminopyridine, phthalic acid and $\text{Co}(\text{NO}_3)_2 \cdot 6\text{H}_2\text{O}$ at 343 K. The asymmetric unit consists of two crystallographically independent 2,6-diaminopyridinium cations, a hydrogen phthalate anion, a nitrate ion and a water molecule of crystallization which in the crystal structure are linked by intermolecular $\text{O}-\text{H} \cdots \text{O}$ and $\text{N}-\text{H} \cdots \text{O}$ hydrogen bonds into a three-dimensional network. In the hydrogen phthalate anion, there is a very strong intramolecular $\text{O}-\text{H} \cdots \text{O}$ hydrogen bond.

Related literature

For a related structure, see: Al-Dajani *et al.* (2009). For a study of strong $\text{O}-\text{H} \cdots \text{O}$ hydrogen bonds, see: Gilli *et al.* (1994).



Experimental

Crystal data

$2\text{C}_5\text{H}_8\text{N}_3^+ \cdot \text{C}_8\text{H}_5\text{O}_4^- \cdot \text{NO}_3^- \cdot \text{H}_2\text{O}$
 $M_r = 465.43$
 Monoclinic, Cc
 $a = 3.6923$ (3) Å
 $b = 37.857$ (3) Å

$c = 14.8415$ (10) Å
 $\beta = 95.111$ (2)°
 $V = 2066.3$ (3) Å³
 $Z = 4$
 Mo $K\alpha$ radiation

$\mu = 0.12$ mm⁻¹
 $T = 120$ K

0.29 × 0.26 × 0.22 mm

Data collection

Bruker SMART 1000 diffractometer
 Absorption correction: multi-scan (SADABS; Sheldrick, 1996)
 $T_{\text{min}} = 0.966$, $T_{\text{max}} = 0.974$

15097 measured reflections
 2737 independent reflections
 2309 reflections with $I > 2\sigma(I)$
 $R_{\text{int}} = 0.034$

Refinement

$R[F^2 > 2\sigma(F^2)] = 0.046$
 $wR(F^2) = 0.093$
 $S = 1.01$
 2737 reflections
 298 parameters

2 restraints
 H-atom parameters constrained
 $\Delta\rho_{\text{max}} = 0.26$ e Å⁻³
 $\Delta\rho_{\text{min}} = -0.19$ e Å⁻³

Table 1

Hydrogen-bond geometry (Å, °).

$D-\text{H} \cdots A$	$D-\text{H}$	$\text{H} \cdots A$	$D \cdots A$	$D-\text{H} \cdots A$
$\text{O1}-\text{H1} \cdots \text{O3}$	1.13	1.25	2.373 (4)	173
$\text{N1}-\text{H1NA} \cdots \text{O1}$	0.90	2.10	2.950 (4)	157
$\text{N1}-\text{H1NB} \cdots \text{O5}$	0.90	2.06	2.940 (4)	165
$\text{N2}-\text{H2NA} \cdots \text{O1}$	0.90	2.48	3.259 (4)	146
$\text{N2}-\text{H2NB} \cdots \text{O2}$	0.90	2.00	2.846 (3)	157
$\text{N3}-\text{H3NB} \cdots \text{O5}^{\text{i}}$	0.90	2.09	2.921 (4)	154
$\text{N3}-\text{H3NA} \cdots \text{O2}$	0.90	2.25	3.074 (4)	153
$\text{N4}-\text{H4NA} \cdots \text{O3}^{\text{ii}}$	0.90	2.18	2.979 (4)	147
$\text{N4}-\text{H4NB} \cdots \text{O6}$	0.90	2.02	2.891 (4)	163
$\text{N5}-\text{H5NA} \cdots \text{O3}^{\text{ii}}$	0.90	2.35	3.167 (4)	150
$\text{N5}-\text{H5NB} \cdots \text{O4}^{\text{iii}}$	0.90	2.07	2.889 (4)	150
$\text{N6}-\text{H6NB} \cdots \text{O1W}^{\text{iii}}$	0.90	1.98	2.825 (4)	157
$\text{N6}-\text{H6NA} \cdots \text{O4}^{\text{iii}}$	0.90	2.21	2.988 (4)	144
$\text{O1W}-\text{H1WA} \cdots \text{O6}^{\text{iv}}$	0.85	1.99	2.834 (4)	169
$\text{O1W}-\text{H1WB} \cdots \text{O6}$	0.85	2.59	3.258 (4)	136
$\text{O1W}-\text{H1WB} \cdots \text{O7}$	0.85	2.06	2.885 (3)	165

Symmetry codes: (i) $x + \frac{1}{2}, -y + \frac{1}{2}, z - \frac{1}{2}$; (ii) $x + 1, y, z$; (iii) $x, -y, z - \frac{1}{2}$; (iv) $x - 1, y, z$.

Data collection: SMART (Bruker, 1998); cell refinement: SAINT-Plus (Bruker, 1998); data reduction: SAINT-Plus; program(s) used to solve structure: SHELXTL (Sheldrick, 2008); program(s) used to refine structure: SHELXTL; molecular graphics: SHELXTL; software used to prepare material for publication: SHELXTL.

Support of this investigation by Islamic Azad University-North Tehran Branch is gratefully acknowledged.

Supplementary data and figures for this paper are available from the IUCr electronic archives (Reference: LH2987).

References

- Al-Dajani, M. T. M., Salhin, A., Mohamed, N., Loh, W.-S. & Fun, H.-K. (2009). *Acta Cryst.* **E65**, o2931–o2932.
 Bruker (1998). SMART and SAINT-Plus. Bruker AXS Inc., Madison, Wisconsin, USA.
 Gilli, P., Bertolasi, V., Ferretti, V. & Gilli, G. (1994). *J. Am. Chem. Soc.* **116**, 909–915.
 Sheldrick, G. M. (1996). SADABS. University of Göttingen, Germany.
 Sheldrick, G. M. (2008). *Acta Cryst.* **A64**, 112–122.

supporting information

Acta Cryst. (2010). E66, o551 [doi:10.1107/S1600536810004150]

Bis(2,6-diaminopyridinium) hydrogen phthalate nitrate monohydrate

Akbar Raissi Shabari, Maryam Safaeimovahed and Mehrdad Pourayoubi

S1. Comment

In previous work, the crystal structure of tetrakis(2,6-diaminopyridinium) diphthalate 2,6-diaminopyridine (Al-Dajani *et al.*, 2009) was investigated; we report here on the synthesis and crystal structure of a new proton-transfer salt of 2,6-diaminopyridine and phthalic acid. In the title compound (Fig. 1), phthalic acid is mono-deprotonated while the two 2,6-diaminopyridine components are protonated at the pyridine nitrogen atom. The two 2,6-diaminopyridinium cations are crystallographically independent. In the mono-anion, there is a very strong intramolecular [O—H \cdots O]⁻ hydrogen bond (O1 \cdots O3 = 2.373 (4) Å) which is a result of the negative charge-assisted effect described by Gilli *et al.* (1994). The cations, anions and water molecules are linked into a 3-D network by O—H \cdots O and N—H \cdots O hydrogen bonds. A view of crystal packing is shown in Fig. 2.

S2. Experimental

The title compound was prepared according to the following procedure: A solution of phthalic acid (0.83 g, 5 mmol) in H₂O (20 ml) was added to a solution of 2,6-diaminopyridine (0.545 g, 5 mmol) in H₂O (5 ml) and stirred. To this solution, a solution of Co(NO₃)₂·6H₂O (1.45 g, 5 mmol) in H₂O (5 ml) was added and stirred at 343 K (20 minutes). The mixture was filtered and single crystals were obtained after slow evaporation at room temperature. IR (KBr, cm⁻¹): 3436, 2347, 1650, 1385, 1053, 984, 773, 731, 485.

S3. Refinement

In the absence of significant anomalous dispersion effects the Friedel pairs were merged. H atoms were placed in calculated positions with C-H = 0.95, N-H = 0.90 and O-H = 0.84 Å. The hydroxyl H atom of the hydrogen phthalate anion was included in an 'as found' position. All H atoms were included in the refinement in a riding-model approximation with $U_{\text{iso}}(\text{H}) = 1.2U_{\text{eq}}(\text{C}, \text{N})$ and $1.5U_{\text{eq}}(\text{O})$.

Bis(2,6-diaminopyridinium) hydrogen phthalate nitrate monohydrate*Crystal data*2C₅H₈N₃⁺·C₈H₅O₄⁻·NO₃⁻·H₂O $M_r = 465.43$ Monoclinic, *Cc*

Hall symbol: C -2yc

 $a = 3.6923 (3) \text{ \AA}$ $b = 37.857 (3) \text{ \AA}$ $c = 14.8415 (10) \text{ \AA}$ $\beta = 95.111 (2)^\circ$ $V = 2066.3 (3) \text{ \AA}^3$ $Z = 4$ $F(000) = 976$ $D_x = 1.496 \text{ Mg m}^{-3}$ Mo $K\alpha$ radiation, $\lambda = 0.71073 \text{ \AA}$

Cell parameters from 5008 reflections

 $\theta = 2.2\text{--}27.2^\circ$ $\mu = 0.12 \text{ mm}^{-1}$ $T = 120 \text{ K}$

Prism, colorless

 $0.29 \times 0.26 \times 0.22 \text{ mm}$ *Data collection*

Bruker SMART 1000

diffractometer

Radiation source: fine-focus sealed tube

Graphite monochromator

 φ and ω scans

Absorption correction: multi-scan

(SADABS; Sheldrick, 1996)

 $T_{\min} = 0.966$, $T_{\max} = 0.974$

15097 measured reflections

2737 independent reflections

2309 reflections with $I > 2\sigma(I)$ $R_{\text{int}} = 0.034$ $\theta_{\max} = 29.0^\circ$, $\theta_{\min} = 1.8^\circ$ $h = -5 \rightarrow 5$ $k = -50 \rightarrow 49$ $l = -20 \rightarrow 20$ *Refinement*Refinement on F^2

Least-squares matrix: full

 $R[F^2 > 2\sigma(F^2)] = 0.046$ $wR(F^2) = 0.093$ $S = 1.01$

2737 reflections

298 parameters

2 restraints

Primary atom site location: structure-invariant

direct methods

Secondary atom site location: difference Fourier map

Hydrogen site location: mixed

H-atom parameters constrained

 $w = 1/[\sigma^2(F_o^2) + (0.02P)^2 + 3.5P]$ where $P = (F_o^2 + 2F_c^2)/3$ $(\Delta/\sigma)_{\max} < 0.001$ $\Delta\rho_{\max} = 0.26 \text{ e \AA}^{-3}$ $\Delta\rho_{\min} = -0.19 \text{ e \AA}^{-3}$ *Special details*

Geometry. All esds (except the esd in the dihedral angle between two l.s. planes) are estimated using the full covariance matrix. The cell esds are taken into account individually in the estimation of esds in distances, angles and torsion angles; correlations between esds in cell parameters are only used when they are defined by crystal symmetry. An approximate (isotropic) treatment of cell esds is used for estimating esds involving l.s. planes.

Refinement. Refinement of F^2 against ALL reflections. The weighted R -factor wR and goodness of fit S are based on F^2 , conventional R -factors R are based on F , with F set to zero for negative F^2 . The threshold expression of $F^2 > \sigma(F^2)$ is used only for calculating R -factors(gt) etc. and is not relevant to the choice of reflections for refinement. R -factors based on F^2 are statistically about twice as large as those based on F , and R -factors based on ALL data will be even larger.

Fractional atomic coordinates and isotropic or equivalent isotropic displacement parameters (\AA^2)

	x	y	z	$U_{\text{iso}}^*/U_{\text{eq}}$
N1	0.6231 (8)	0.17540 (6)	0.49397 (18)	0.0283 (6)
H1NA	0.4475	0.1658	0.4557	0.034*
H1NB	0.6041	0.1721	0.5534	0.034*
N2	0.6881 (7)	0.22109 (6)	0.39298 (16)	0.0229 (5)

H2NA	0.5601	0.2072	0.3525	0.027*
N3	0.7201 (9)	0.26246 (7)	0.28055 (19)	0.0355 (7)
H3NB	0.7787	0.2848	0.2672	0.043*
H3NA	0.6032	0.2454	0.2473	0.043*
C1	0.7408 (8)	0.20826 (8)	0.4790 (2)	0.0229 (6)
C2	0.9210 (9)	0.22967 (8)	0.5452 (2)	0.0268 (6)
H2A	0.9646	0.2217	0.6059	0.032*
C3	1.0348 (8)	0.26286 (8)	0.5202 (2)	0.0274 (6)
H3A	1.1589	0.2775	0.5649	0.033*
C4	0.9751 (8)	0.27550 (8)	0.4329 (2)	0.0269 (6)
H4A	1.0539	0.2984	0.4177	0.032*
C5	0.7960 (8)	0.25365 (8)	0.3679 (2)	0.0253 (6)
N4	0.5267 (8)	0.09027 (7)	0.51218 (19)	0.0296 (6)
H4NA	0.6869	0.0988	0.4753	0.036*
H4NB	0.5352	0.1036	0.5625	0.036*
N5	0.4276 (7)	0.03920 (7)	0.42957 (18)	0.0258 (5)
H5NA	0.5180	0.0520	0.3857	0.031*
N6	0.3504 (8)	-0.00825 (7)	0.33294 (19)	0.0331 (6)
H6NB	0.2189	-0.0275	0.3158	0.040*
H6NA	0.4457	0.0043	0.2893	0.040*
C6	0.4164 (8)	0.05637 (8)	0.5096 (2)	0.0251 (6)
C7	0.2886 (9)	0.03842 (8)	0.5820 (2)	0.0283 (6)
H7A	0.2777	0.0497	0.6389	0.034*
C8	0.1770 (8)	0.00351 (9)	0.5693 (2)	0.0295 (7)
H8A	0.0886	-0.0090	0.6184	0.035*
C9	0.1914 (9)	-0.01353 (9)	0.4870 (2)	0.0294 (7)
H9A	0.1147	-0.0374	0.4797	0.035*
C10	0.3200 (8)	0.00492 (8)	0.4155 (2)	0.0255 (6)
O1	0.1534 (7)	0.15535 (7)	0.33076 (16)	0.0377 (6)
H1	0.0380	0.1279	0.3375	0.057*
O2	0.3398 (7)	0.19199 (6)	0.23096 (17)	0.0367 (6)
O3	-0.1237 (7)	0.09909 (7)	0.34030 (16)	0.0388 (6)
O4	-0.3587 (7)	0.05715 (7)	0.25269 (18)	0.0429 (6)
C11	0.1856 (8)	0.16417 (8)	0.2484 (2)	0.0269 (6)
C12	0.0332 (7)	0.14044 (8)	0.1715 (2)	0.0204 (6)
C13	0.0674 (8)	0.15452 (8)	0.0853 (2)	0.0232 (6)
H13A	0.1735	0.1773	0.0811	0.028*
C14	-0.0452 (8)	0.13698 (8)	0.0067 (2)	0.0263 (6)
H14A	-0.0135	0.1472	-0.0505	0.032*
C15	-0.2063 (8)	0.10402 (8)	0.0126 (2)	0.0273 (6)
H15A	-0.2905	0.0916	-0.0409	0.033*
C16	-0.2436 (8)	0.08934 (8)	0.0964 (2)	0.0248 (6)
H16A	-0.3498	0.0666	0.0994	0.030*
C17	-0.1311 (8)	0.10676 (8)	0.1768 (2)	0.0225 (6)
C18	-0.2081 (9)	0.08613 (9)	0.2609 (2)	0.0295 (7)
N7	0.5255 (8)	0.14787 (7)	0.72886 (18)	0.0307 (6)
O5	0.4868 (8)	0.17644 (6)	0.68613 (17)	0.0419 (6)
O6	0.6450 (7)	0.12132 (6)	0.69036 (16)	0.0392 (6)

O7	0.4512 (7)	0.14595 (6)	0.80893 (16)	0.0380 (6)
O1W	0.0932 (8)	0.07824 (6)	0.81011 (18)	0.0400 (6)
H1WA	-0.0387	0.0932	0.7797	0.060*
H1WB	0.2333	0.0959	0.8075	0.060*

Atomic displacement parameters (Å²)

	U^{11}	U^{22}	U^{33}	U^{12}	U^{13}	U^{23}
N1	0.0383 (15)	0.0226 (13)	0.0237 (13)	-0.0027 (11)	0.0010 (11)	0.0000 (10)
N2	0.0276 (13)	0.0200 (12)	0.0211 (12)	-0.0015 (10)	0.0019 (10)	-0.0023 (10)
N3	0.0520 (18)	0.0264 (14)	0.0270 (14)	-0.0091 (13)	-0.0020 (13)	0.0015 (11)
C1	0.0223 (14)	0.0206 (14)	0.0261 (15)	0.0022 (11)	0.0042 (11)	-0.0003 (11)
C2	0.0310 (16)	0.0269 (15)	0.0221 (14)	0.0018 (13)	-0.0002 (12)	-0.0017 (12)
C3	0.0277 (16)	0.0256 (15)	0.0285 (16)	0.0016 (12)	-0.0001 (12)	-0.0091 (12)
C4	0.0264 (15)	0.0223 (15)	0.0324 (16)	-0.0007 (12)	0.0044 (12)	-0.0023 (13)
C5	0.0285 (15)	0.0226 (15)	0.0254 (15)	0.0014 (12)	0.0056 (12)	0.0002 (12)
N4	0.0385 (15)	0.0230 (13)	0.0276 (13)	-0.0039 (11)	0.0042 (11)	-0.0019 (10)
N5	0.0293 (13)	0.0210 (12)	0.0273 (13)	-0.0020 (10)	0.0030 (10)	0.0032 (10)
N6	0.0440 (17)	0.0260 (14)	0.0295 (14)	-0.0065 (12)	0.0047 (12)	-0.0026 (11)
C6	0.0248 (15)	0.0225 (14)	0.0282 (15)	0.0034 (11)	0.0025 (12)	0.0022 (12)
C7	0.0304 (16)	0.0299 (16)	0.0247 (15)	0.0028 (13)	0.0038 (12)	0.0012 (13)
C8	0.0273 (16)	0.0299 (17)	0.0318 (16)	0.0018 (13)	0.0053 (13)	0.0099 (13)
C9	0.0306 (17)	0.0255 (15)	0.0322 (16)	-0.0006 (13)	0.0035 (13)	0.0053 (13)
C10	0.0239 (14)	0.0231 (15)	0.0292 (16)	0.0027 (12)	0.0016 (11)	0.0030 (12)
O1	0.0485 (15)	0.0380 (13)	0.0262 (12)	-0.0022 (11)	0.0012 (10)	-0.0044 (10)
O2	0.0404 (14)	0.0301 (12)	0.0397 (14)	-0.0112 (10)	0.0042 (11)	-0.0086 (10)
O3	0.0516 (16)	0.0393 (14)	0.0259 (12)	-0.0030 (12)	0.0065 (11)	0.0062 (11)
O4	0.0471 (15)	0.0370 (14)	0.0444 (15)	-0.0143 (12)	0.0021 (12)	0.0138 (12)
C11	0.0233 (15)	0.0267 (15)	0.0307 (16)	0.0016 (12)	0.0028 (12)	-0.0067 (13)
C12	0.0178 (13)	0.0211 (13)	0.0224 (13)	0.0033 (10)	0.0010 (10)	-0.0017 (11)
C13	0.0225 (14)	0.0206 (13)	0.0269 (14)	0.0023 (11)	0.0040 (11)	0.0025 (12)
C14	0.0276 (16)	0.0293 (15)	0.0224 (14)	0.0060 (12)	0.0039 (12)	0.0036 (12)
C15	0.0258 (15)	0.0299 (16)	0.0257 (15)	0.0043 (12)	-0.0012 (12)	-0.0067 (12)
C16	0.0226 (15)	0.0195 (13)	0.0316 (16)	0.0001 (11)	-0.0014 (12)	-0.0008 (12)
C17	0.0212 (14)	0.0238 (14)	0.0232 (14)	0.0028 (11)	0.0049 (11)	0.0007 (11)
C18	0.0257 (16)	0.0310 (16)	0.0318 (16)	0.0052 (13)	0.0021 (12)	0.0072 (13)
N7	0.0372 (16)	0.0307 (14)	0.0239 (14)	0.0012 (12)	0.0004 (11)	-0.0044 (11)
O5	0.0644 (18)	0.0302 (13)	0.0324 (13)	0.0097 (12)	0.0118 (12)	0.0070 (10)
O6	0.0564 (16)	0.0311 (13)	0.0299 (13)	0.0120 (11)	0.0019 (11)	-0.0063 (10)
O7	0.0551 (17)	0.0352 (14)	0.0243 (11)	-0.0027 (12)	0.0071 (11)	-0.0020 (10)
O1W	0.0516 (16)	0.0255 (12)	0.0431 (14)	0.0061 (11)	0.0053 (12)	0.0075 (10)

Geometric parameters (Å, °)

N1—C1	1.343 (4)	C8—C9	1.386 (5)
N1—H1NA	0.8999	C8—H8A	0.9500
N1—H1NB	0.9001	C9—C10	1.390 (4)
N2—C5	1.358 (4)	C9—H9A	0.9500

N2—C1	1.364 (4)	O1—C11	1.283 (4)
N2—H2NA	0.9000	O1—H1	1.1299
N3—C5	1.343 (4)	O2—C11	1.235 (4)
N3—H3NB	0.8998	O3—C18	1.289 (4)
N3—H3NA	0.8998	O3—H1	1.2468
C1—C2	1.396 (4)	O4—C18	1.231 (4)
C2—C3	1.386 (4)	C11—C12	1.520 (4)
C2—H2A	0.9500	C12—C13	1.402 (4)
C3—C4	1.379 (4)	C12—C17	1.417 (4)
C3—H3A	0.9500	C13—C14	1.374 (4)
C4—C5	1.393 (4)	C13—H13A	0.9500
C4—H4A	0.9500	C14—C15	1.389 (5)
N4—C6	1.346 (4)	C14—H14A	0.9500
N4—H4NA	0.9000	C15—C16	1.381 (4)
N4—H4NB	0.9001	C15—H15A	0.9500
N5—C6	1.358 (4)	C16—C17	1.393 (4)
N5—C10	1.368 (4)	C16—H16A	0.9500
N5—H5NA	0.9000	C17—C18	1.520 (4)
N6—C10	1.336 (4)	N7—O7	1.245 (3)
N6—H6NB	0.8996	N7—O6	1.255 (3)
N6—H6NA	0.8999	N7—O5	1.256 (4)
C6—C7	1.389 (4)	O1W—H1WA	0.8497
C7—C8	1.392 (5)	O1W—H1WB	0.8496
C7—H7A	0.9500		
C1—N1—H1NA	119.7	C9—C8—C7	121.8 (3)
C1—N1—H1NB	110.2	C9—C8—H8A	119.1
H1NA—N1—H1NB	116.7	C7—C8—H8A	119.1
C5—N2—C1	124.0 (3)	C8—C9—C10	118.8 (3)
C5—N2—H2NA	119.7	C8—C9—H9A	120.6
C1—N2—H2NA	116.2	C10—C9—H9A	120.6
C5—N3—H3NB	114.3	N6—C10—N5	116.6 (3)
C5—N3—H3NA	113.5	N6—C10—C9	125.1 (3)
H3NB—N3—H3NA	131.9	N5—C10—C9	118.3 (3)
N1—C1—N2	117.6 (3)	C11—O1—H1	113.1
N1—C1—C2	124.3 (3)	C18—O3—H1	112.4
N2—C1—C2	118.1 (3)	O2—C11—O1	120.4 (3)
C3—C2—C1	118.4 (3)	O2—C11—C12	119.5 (3)
C3—C2—H2A	120.8	O1—C11—C12	120.1 (3)
C1—C2—H2A	120.8	C13—C12—C17	117.8 (3)
C4—C3—C2	122.6 (3)	C13—C12—C11	113.8 (3)
C4—C3—H3A	118.7	C17—C12—C11	128.5 (3)
C2—C3—H3A	118.7	C14—C13—C12	123.1 (3)
C3—C4—C5	118.1 (3)	C14—C13—H13A	118.5
C3—C4—H4A	120.9	C12—C13—H13A	118.5
C5—C4—H4A	120.9	C13—C14—C15	118.7 (3)
N3—C5—N2	116.7 (3)	C13—C14—H14A	120.7
N3—C5—C4	124.5 (3)	C15—C14—H14A	120.7

N2—C5—C4	118.8 (3)	C16—C15—C14	119.7 (3)
C6—N4—H4NA	122.5	C16—C15—H15A	120.1
C6—N4—H4NB	123.2	C14—C15—H15A	120.1
H4NA—N4—H4NB	109.1	C15—C16—C17	122.3 (3)
C6—N5—C10	123.8 (3)	C15—C16—H16A	118.8
C6—N5—H5NA	114.7	C17—C16—H16A	118.8
C10—N5—H5NA	121.5	C16—C17—C12	118.4 (3)
C10—N6—H6NB	118.3	C16—C17—C18	113.4 (3)
C10—N6—H6NA	122.2	C12—C17—C18	128.3 (3)
H6NB—N6—H6NA	117.4	O4—C18—O3	120.0 (3)
N4—C6—N5	116.7 (3)	O4—C18—C17	119.5 (3)
N4—C6—C7	124.5 (3)	O3—C18—C17	120.5 (3)
N5—C6—C7	118.8 (3)	O7—N7—O6	120.3 (3)
C6—C7—C8	118.5 (3)	O7—N7—O5	120.5 (3)
C6—C7—H7A	120.8	O6—N7—O5	119.2 (3)
C8—C7—H7A	120.8	H1WA—O1W—H1WB	76.9
C5—N2—C1—N1	-179.3 (3)	O2—C11—C12—C13	-3.8 (4)
C5—N2—C1—C2	-0.9 (4)	O1—C11—C12—C13	176.1 (3)
N1—C1—C2—C3	178.7 (3)	O2—C11—C12—C17	175.6 (3)
N2—C1—C2—C3	0.4 (4)	O1—C11—C12—C17	-4.5 (5)
C1—C2—C3—C4	0.4 (5)	C17—C12—C13—C14	-1.0 (4)
C2—C3—C4—C5	-0.6 (5)	C11—C12—C13—C14	178.5 (3)
C1—N2—C5—N3	-179.3 (3)	C12—C13—C14—C15	1.1 (4)
C1—N2—C5—C4	0.7 (4)	C13—C14—C15—C16	-1.2 (4)
C3—C4—C5—N3	-179.9 (3)	C14—C15—C16—C17	1.3 (5)
C3—C4—C5—N2	0.1 (4)	C15—C16—C17—C12	-1.2 (4)
C10—N5—C6—N4	-179.0 (3)	C15—C16—C17—C18	178.4 (3)
C10—N5—C6—C7	0.0 (4)	C13—C12—C17—C16	1.0 (4)
N4—C6—C7—C8	178.8 (3)	C11—C12—C17—C16	-178.4 (3)
N5—C6—C7—C8	-0.1 (4)	C13—C12—C17—C18	-178.5 (3)
C6—C7—C8—C9	0.2 (5)	C11—C12—C17—C18	2.1 (5)
C7—C8—C9—C10	-0.2 (5)	C16—C17—C18—O4	-0.5 (4)
C6—N5—C10—N6	-179.5 (3)	C12—C17—C18—O4	179.0 (3)
C6—N5—C10—C9	0.0 (4)	C16—C17—C18—O3	-179.1 (3)
C8—C9—C10—N6	179.6 (3)	C12—C17—C18—O3	0.4 (5)
C8—C9—C10—N5	0.1 (4)		

Hydrogen-bond geometry (\AA , $^\circ$)

<i>D</i> —H \cdots <i>A</i>	<i>D</i> —H	H \cdots <i>A</i>	<i>D</i> \cdots <i>A</i>	<i>D</i> —H \cdots <i>A</i>
O1—H1 \cdots O3	1.13	1.25	2.373 (4)	173
N1—H1NA \cdots O1	0.90	2.10	2.950 (4)	157
N1—H1NB \cdots O5	0.90	2.06	2.940 (4)	165
N2—H2NA \cdots O1	0.90	2.48	3.259 (4)	146
N2—H2NA \cdots O2	0.90	2.00	2.846 (3)	157
N3—H3NB \cdots O5 ⁱ	0.90	2.09	2.921 (4)	154
N3—H3NA \cdots O2	0.90	2.25	3.074 (4)	153

N4—H4NA···O3 ⁱⁱ	0.90	2.18	2.979 (4)	147
N4—H4NB···O6	0.90	2.02	2.891 (4)	163
N5—H5NA···O3 ⁱⁱ	0.90	2.35	3.167 (4)	150
N5—H5NA···O4 ⁱⁱ	0.90	2.07	2.889 (4)	150
N6—H6NB···O1W ⁱⁱⁱ	0.90	1.98	2.825 (4)	157
N6—H6NA···O4 ⁱⁱ	0.90	2.21	2.988 (4)	144
O1W—H1WA···O6 ^{iv}	0.85	1.99	2.834 (4)	169
O1W—H1WB···O6	0.85	2.59	3.258 (4)	136
O1W—H1WB···O7	0.85	2.06	2.885 (3)	165

Symmetry codes: (i) $x+1/2, -y+1/2, z-1/2$; (ii) $x+1, y, z$; (iii) $x, -y, z-1/2$; (iv) $x-1, y, z$.