

Acta Crystallographica Section E

Structure Reports

Online

ISSN 1600-5368

3-(2,4-Dichlorophenyl)-5-methyl-1,2,4-oxadiazole

Hoong-Kun Fun,^{a,*} Mohd Mustaqim Rosli,^a Sankappa Rai,^b Arun M Isloor^c and Prakash Shetty^d

^aX-ray Crystallography Unit, School of Physics, Universiti Sains Malaysia, 11800 USM, Penang, Malaysia, ^bSyngene International Ltd, Biocon Park, Plot Nos 2 & 3, Bommasandra 4th Phase, Jigani Link Rd, Bangalore 560100, India, ^cDepartment of Chemistry, Organic Chemistry Division, National Institute of Technology-Karnataka, Surathkal, Mangalore 575 025, India, and ^dDepartment of Printing, Manipal Institute of Technology, Manipal 576 104, India

Correspondence e-mail: hkfun@usm.my

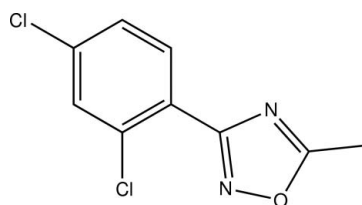
Received 24 February 2010; accepted 2 March 2010

Key indicators: single-crystal X-ray study; $T = 100$ K; mean $\sigma(\text{C}-\text{C}) = 0.005$ Å; R factor = 0.056; wR factor = 0.155; data-to-parameter ratio = 16.2.

In the title compound, $\text{C}_9\text{H}_6\text{Cl}_2\text{N}_2\text{O}$, the dihedral angle between the oxadiazole and benzene rings is $1.7(2)^\circ$. In the crystal, the molecules are linked into chains along the b axis by short intermolecular $\text{Cl}\cdots\text{O}$ contacts [$3.019(3)$ Å].

Related literature

For general background and the biological activity of oxadiazole compounds, see: Andersen *et al.* (1994); Clitherow *et al.* (1996); Showell *et al.* (1991); Swain *et al.* (1991); Watjen *et al.* (1989). For a related structure, see: Wang *et al.* (2006). For the stability of the temperature controller used for the data collection, see: Cosier & Glazer (1986).



Experimental

Crystal data

$\text{C}_9\text{H}_6\text{Cl}_2\text{N}_2\text{O}$
 $M_r = 229.06$
 Monoclinic, $P2_1/c$

$a = 3.8252(7)$ Å
 $b = 21.678(4)$ Å
 $c = 11.0833(19)$ Å

$\beta = 92.421(4)^\circ$
 $V = 918.3(3)$ Å³
 $Z = 4$
 Mo $K\alpha$ radiation

$\mu = 0.67$ mm⁻¹
 $T = 100$ K
 $0.28 \times 0.17 \times 0.11$ mm

Data collection

Bruker SMART APEXII CCD
 area-detector diffractometer
 Absorption correction: multi-scan
 (SADABS; Bruker, 2005)
 $T_{\text{min}} = 0.833$, $T_{\text{max}} = 0.929$

7920 measured reflections
 2076 independent reflections
 1709 reflections with $I > 2\sigma(I)$
 $R_{\text{int}} = 0.048$

Refinement

$R[F^2 > 2\sigma(F^2)] = 0.056$
 $wR(F^2) = 0.155$
 $S = 1.20$
 2076 reflections

128 parameters
 H-atom parameters constrained
 $\Delta\rho_{\text{max}} = 0.72$ e Å⁻³
 $\Delta\rho_{\text{min}} = -0.56$ e Å⁻³

Data collection: APEX2 (Bruker, 2005); cell refinement: SAINT (Bruker, 2005); data reduction: SAINT; program(s) used to solve structure: SHELXTL (Sheldrick, 2008); program(s) used to refine structure: SHELXTL; molecular graphics: SHELXTL; software used to prepare material for publication: SHELXTL and PLATON (Spek, 2009).

HKF and MMR thank the Malaysian Government and Universiti Sains Malaysia (USM) for the Research University Golden Goose Grant (1001/PFIZIK/811012). AMI is grateful to Professor Sandeep Sancheti, Director, National Institute of Technology-Karnataka, India, for providing research facilities and encouragement.

Supplementary data and figures for this paper are available from the IUCr electronic archives (Reference: CI5045).

References

- Andersen, K. E., Jørgensen, A. S. & Bræstrup, C. (1994). *Eur. J. Med. Chem.* **29**, 393–399.
- Bruker (2005). APEX2, SAINT and SADABS. Bruker AXS Inc., Madison, Wisconsin, USA.
- Clitherow, J. W., Beswick, P., Irving, W. J., Scopes, D. I. C., Barnes, J. C., Clapham, J., Brown, J. D., Evans, D. J. & Hayes, A. G. (1996). *Bioorg. Med. Chem. Lett.* **6**, 833–838.
- Cosier, J. & Glazer, A. M. (1986). *J. Appl. Cryst.* **19**, 105–107.
- Sheldrick, G. M. (2008). *Acta Cryst.* **A64**, 112–122.
- Showell, G. A., Gibbons, T. L., Kneen, C. O., MacLeod, A. M., Merchant, K., Saunders, J., Freedman, S. B., Patel, S. & Baker, R. (1991). *J. Med. Chem.* **34**, 1086–1094.
- Spek, A. L. (2009). *Acta Cryst.* **D65**, 148–155.
- Swain, C. J., Baker, R., Kneen, C., Moseley, J., Saunders, J., Seward, E. M., Stevenson, G., Beer, M., Stanton, J. & Watling, K. (1991). *J. Med. Chem.* **34**, 140–151.
- Wang, H.-B., Liu, Z.-Q., Wang, H.-B. & Yan, X.-C. (2006). *Acta Cryst.* **E62**, o4715–o4716.
- Watjen, F., Baker, R., Engelstoff, M., Herbert, R., MacLeod, A., Knight, A., Merchant, K., Moseley, J., Saunders, J., Swain, C. J., Wang, E. & Springer, J. P. (1989). *J. Med. Chem.* **32**, 282–2291.

* Thomson Reuters ResearcherID: A-3561-2009.

supporting information

Acta Cryst. (2010). E66, o772 [doi:10.1107/S1600536810007932]

3-(2,4-Dichlorophenyl)-5-methyl-1,2,4-oxadiazole

Hoong-Kun Fun, Mohd Mustaqim Rosli, Sankappa Rai, Arun M Isloor and Prakash Shetty

S1. Comment

Heterocyclic compounds are important in recent years due to pharmacological activities. Nitrogen, oxygen containing five- and six-membered heterocyclic compounds have enormous significance in the field of medicinal chemistry. Oxadiazoles play a very vital role in the preparation of various biologically active drugs with anti-inflammatory (Andersen *et al.*, 1994), anti-cancer (Showell *et al.*, 1991), anti-HIV (Watjen *et al.*, 1989), anti-diabetic and anti-microbial (Swain *et al.*, 1991) properties. The results of biological studies showed that oxadiazole derivatives are molecules with maximum anti-inflammatory, analgesic and minimum ulcerogenic and lipid per-oxidation (Clitherow *et al.*, 1996) properties.

Bond lengths and angles are normal (Wang *et al.*, 2006). The mean plane of the oxadiazole ring (C1/C2/N1/N2/O1) is almost coplanar with the mean plane of the C3–C8 benzene ring (Fig. 1), with a dihedral angle of 1.7 (2)°.

The molecules are linked by C12...O1(-x, 1/2+y, 3/2-z) short contacts [3.019 (3) Å;] to form chains along the *b* axis (Fig.2).

S2. Experimental

The title compound was prepared by heating a solution of 2,4-dichloro-N'-hydroxy-benzamidine (1 g, 0.0042 mol) and acetyl chloride (0.38 g, 0.004 mol) in pyridine (30 ml) at 387 K for 1.5 h and the contents were concentrated under vacuum. Further purification was done by column chromatography. The solid obtained was recrystallized using dichloromethane (yield: 1.0 g (76%); m.p. 371-372 K).

S3. Refinement

H atoms were placed in calculated positions [C–H = 0.93–0.96 Å] and refined as riding with $U_{\text{iso}}(\text{H}) = 1.2_{\text{eq}}(\text{C})$ or $1.5U_{\text{eq}}(\text{methyl C})$. A rotating group model was used for the methyl group.

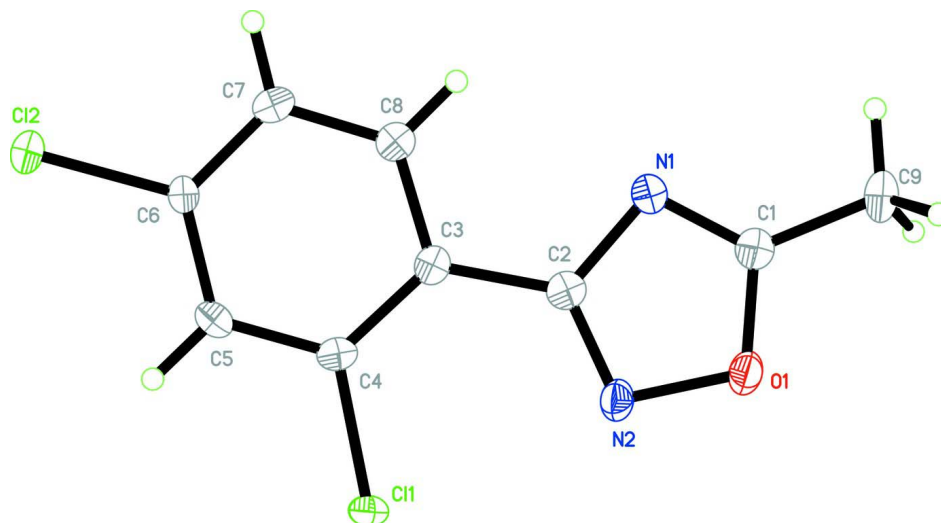


Figure 1

The molecular structure of the title compound, showing 50% probability displacement ellipsoids and the atom-numbering scheme.

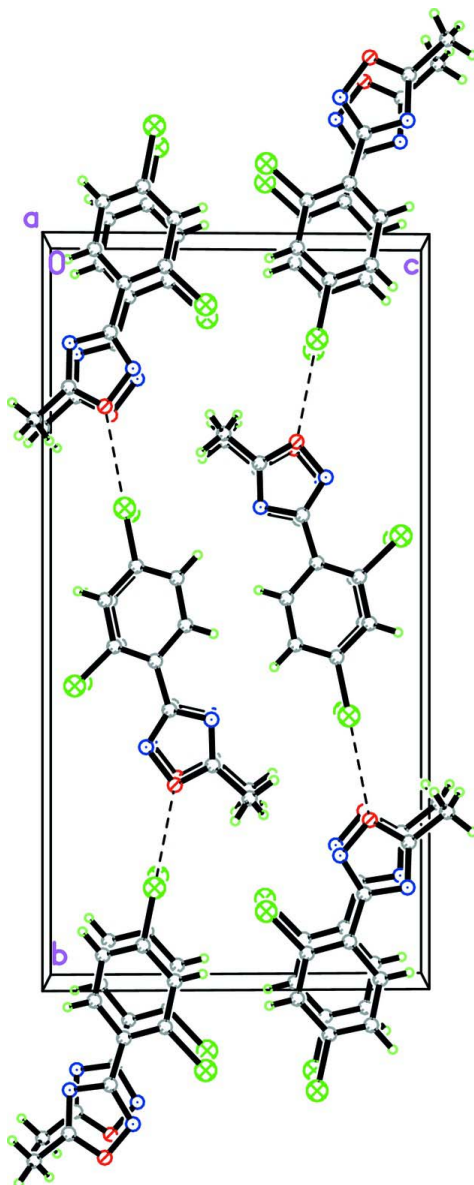


Figure 2

The crystal structure of the title compound, showing chains along the *b* axis.

3-(2,4-Dichlorophenyl)-5-methyl-1,2,4-oxadiazole

Crystal data

$C_9H_6Cl_2N_2O$

$M_r = 229.06$

Monoclinic, $P2_1/c$

Hall symbol: $-P\ 2ybc$

$a = 3.8252\ (7)\ \text{\AA}$

$b = 21.678\ (4)\ \text{\AA}$

$c = 11.0833\ (19)\ \text{\AA}$

$\beta = 92.421\ (4)^\circ$

$V = 918.3\ (3)\ \text{\AA}^3$

$Z = 4$

$F(000) = 464$

$D_x = 1.657\ \text{Mg m}^{-3}$

Mo $K\alpha$ radiation, $\lambda = 0.71073\ \text{\AA}$

Cell parameters from 3719 reflections

$\theta = 2.6\text{--}31.1^\circ$

$\mu = 0.67\ \text{mm}^{-1}$

$T = 100\ \text{K}$

Block, colourless

$0.28 \times 0.17 \times 0.11\ \text{mm}$

Data collection

Bruker SMART APEXII CCD area-detector
diffractometer
Radiation source: fine-focus sealed tube
Graphite monochromator
 φ and ω scans
Absorption correction: multi-scan
(*SADABS*; Bruker, 2005)
 $T_{\min} = 0.833$, $T_{\max} = 0.929$

7920 measured reflections
2076 independent reflections
1709 reflections with $I > 2\sigma(I)$
 $R_{\text{int}} = 0.048$
 $\theta_{\text{max}} = 27.5^\circ$, $\theta_{\text{min}} = 1.9^\circ$
 $h = -4 \rightarrow 4$
 $k = -26 \rightarrow 28$
 $l = -13 \rightarrow 14$

Refinement

Refinement on F^2
Least-squares matrix: full
 $R[F^2 > 2\sigma(F^2)] = 0.056$
 $wR(F^2) = 0.155$
 $S = 1.20$
2076 reflections
128 parameters
0 restraints
Primary atom site location: structure-invariant
direct methods

Secondary atom site location: difference Fourier
map
Hydrogen site location: inferred from
neighbouring sites
H-atom parameters constrained
 $w = 1/[\sigma^2(F_o^2) + (0.0428P)^2 + 4.0517P]$
where $P = (F_o^2 + 2F_c^2)/3$
 $(\Delta/\sigma)_{\text{max}} = 0.001$
 $\Delta\rho_{\text{max}} = 0.72 \text{ e } \text{\AA}^{-3}$
 $\Delta\rho_{\text{min}} = -0.56 \text{ e } \text{\AA}^{-3}$

Special details

Experimental. The crystal was placed in the cold stream of an Oxford Cyrosystems Cobra open-flow nitrogen cryostat (Cosier & Glazer, 1986) operating at 100.0 (1) K.

Geometry. All esds (except the esd in the dihedral angle between two l.s. planes) are estimated using the full covariance matrix. The cell esds are taken into account individually in the estimation of esds in distances, angles and torsion angles; correlations between esds in cell parameters are only used when they are defined by crystal symmetry. An approximate (isotropic) treatment of cell esds is used for estimating esds involving l.s. planes.

Refinement. Refinement of F^2 against ALL reflections. The weighted R-factor wR and goodness of fit S are based on F^2 , conventional R-factors R are based on F , with F set to zero for negative F^2 . The threshold expression of $F^2 > 2\sigma(F^2)$ is used only for calculating R-factors(gt) etc. and is not relevant to the choice of reflections for refinement. R-factors based on F^2 are statistically about twice as large as those based on F , and R-factors based on ALL data will be even larger.

Fractional atomic coordinates and isotropic or equivalent isotropic displacement parameters (\AA^2)

	<i>x</i>	<i>y</i>	<i>z</i>	$U_{\text{iso}}^*/U_{\text{eq}}$
Cl1	0.2530 (2)	0.40084 (4)	0.92173 (8)	0.0163 (2)
Cl2	0.1238 (3)	0.63730 (4)	0.78985 (9)	0.0185 (3)
O1	-0.2054 (8)	0.27327 (13)	0.6574 (3)	0.0220 (7)
N1	-0.3467 (8)	0.35961 (15)	0.5636 (3)	0.0158 (7)
N2	-0.0709 (10)	0.32171 (16)	0.7322 (3)	0.0194 (7)
C1	-0.3637 (11)	0.30045 (18)	0.5605 (4)	0.0173 (8)
C2	-0.1651 (10)	0.37119 (18)	0.6715 (3)	0.0140 (8)
C3	-0.0869 (9)	0.43519 (17)	0.7088 (3)	0.0124 (7)
C4	0.0928 (10)	0.45392 (18)	0.8165 (3)	0.0137 (8)
C5	0.1523 (9)	0.51553 (18)	0.8418 (4)	0.0136 (7)
H5A	0.2684	0.5272	0.9136	0.016*
C6	0.0369 (10)	0.56000 (17)	0.7588 (3)	0.0127 (7)
C7	-0.1429 (10)	0.54398 (18)	0.6533 (4)	0.0151 (8)
H7A	-0.2240	0.5740	0.5990	0.018*

C8	-0.1993 (10)	0.48214 (18)	0.6303 (4)	0.0153 (8)
H8A	-0.3186	0.4712	0.5586	0.018*
C9	-0.5226 (12)	0.2592 (2)	0.4666 (4)	0.0237 (9)
H9A	-0.6428	0.2835	0.4055	0.036*
H9B	-0.6856	0.2319	0.5028	0.036*
H9C	-0.3422	0.2354	0.4308	0.036*

Atomic displacement parameters (Å²)

	U^{11}	U^{22}	U^{33}	U^{12}	U^{13}	U^{23}
Cl1	0.0168 (5)	0.0182 (5)	0.0138 (5)	0.0028 (3)	-0.0011 (3)	0.0023 (4)
Cl2	0.0197 (5)	0.0140 (4)	0.0219 (5)	-0.0024 (3)	0.0025 (4)	-0.0017 (4)
O1	0.0309 (17)	0.0139 (14)	0.0213 (15)	-0.0017 (12)	0.0017 (12)	-0.0018 (12)
N1	0.0130 (15)	0.0175 (16)	0.0172 (17)	0.0000 (12)	0.0018 (12)	-0.0022 (13)
N2	0.0257 (19)	0.0147 (16)	0.0178 (18)	-0.0002 (14)	0.0018 (14)	-0.0032 (13)
C1	0.0148 (19)	0.0194 (19)	0.018 (2)	0.0000 (15)	0.0051 (15)	-0.0007 (15)
C2	0.0103 (17)	0.0185 (19)	0.0138 (18)	0.0022 (14)	0.0081 (14)	0.0000 (14)
C3	0.0078 (17)	0.0152 (18)	0.0150 (18)	0.0009 (13)	0.0080 (14)	-0.0011 (14)
C4	0.0126 (18)	0.0171 (19)	0.0119 (19)	0.0043 (13)	0.0054 (14)	0.0016 (14)
C5	0.0070 (16)	0.0208 (19)	0.0132 (18)	0.0017 (14)	0.0022 (13)	-0.0021 (15)
C6	0.0106 (17)	0.0134 (17)	0.0144 (18)	-0.0008 (13)	0.0033 (13)	-0.0027 (14)
C7	0.0106 (18)	0.0174 (19)	0.0177 (19)	0.0033 (14)	0.0056 (14)	0.0033 (15)
C8	0.0114 (17)	0.0181 (19)	0.017 (2)	0.0005 (14)	0.0055 (14)	0.0004 (15)
C9	0.025 (2)	0.018 (2)	0.029 (2)	-0.0030 (16)	0.0041 (18)	-0.0072 (17)

Geometric parameters (Å, °)

Cl1—C4	1.732 (4)	C4—C5	1.382 (5)
Cl2—C6	1.740 (4)	C5—C6	1.391 (5)
O1—C1	1.346 (5)	C5—H5A	0.93
O1—N2	1.421 (4)	C6—C7	1.376 (5)
N1—C1	1.285 (5)	C7—C8	1.380 (6)
N1—C2	1.381 (5)	C7—H7A	0.93
N2—C2	1.308 (5)	C8—H8A	0.93
C1—C9	1.483 (6)	C9—H9A	0.96
C2—C3	1.475 (5)	C9—H9B	0.96
C3—C8	1.396 (5)	C9—H9C	0.96
C3—C4	1.411 (5)		
C1—O1—N2	106.4 (3)	C6—C5—H5A	120.3
C1—N1—C2	103.2 (3)	C7—C6—C5	121.3 (4)
C2—N2—O1	102.8 (3)	C7—C6—Cl2	119.7 (3)
N1—C1—O1	113.3 (4)	C5—C6—Cl2	119.0 (3)
N1—C1—C9	129.8 (4)	C6—C7—C8	118.1 (4)
O1—C1—C9	116.9 (4)	C6—C7—H7A	121.0
N2—C2—N1	114.4 (4)	C8—C7—H7A	121.0
N2—C2—C3	125.4 (4)	C7—C8—C3	123.5 (4)
N1—C2—C3	120.2 (3)	C7—C8—H8A	118.3

C8—C3—C4	116.4 (3)	C3—C8—H8A	118.3
C8—C3—C2	117.2 (3)	C1—C9—H9A	109.5
C4—C3—C2	126.4 (3)	C1—C9—H9B	109.5
C5—C4—C3	121.3 (3)	H9A—C9—H9B	109.5
C5—C4—C11	117.1 (3)	C1—C9—H9C	109.5
C3—C4—C11	121.6 (3)	H9A—C9—H9C	109.5
C4—C5—C6	119.4 (3)	H9B—C9—H9C	109.5
C4—C5—H5A	120.3		
C1—O1—N2—C2	0.1 (4)	C8—C3—C4—C5	0.0 (5)
C2—N1—C1—O1	-0.4 (5)	C2—C3—C4—C5	179.8 (3)
C2—N1—C1—C9	-179.1 (4)	C8—C3—C4—C11	-179.1 (3)
N2—O1—C1—N1	0.2 (5)	C2—C3—C4—C11	0.6 (5)
N2—O1—C1—C9	179.1 (3)	C3—C4—C5—C6	-0.8 (6)
O1—N2—C2—N1	-0.4 (4)	C11—C4—C5—C6	178.4 (3)
O1—N2—C2—C3	-179.3 (3)	C4—C5—C6—C7	1.6 (6)
C1—N1—C2—N2	0.5 (5)	C4—C5—C6—C12	-178.3 (3)
C1—N1—C2—C3	179.5 (3)	C5—C6—C7—C8	-1.5 (6)
N2—C2—C3—C8	178.0 (4)	C12—C6—C7—C8	178.4 (3)
N1—C2—C3—C8	-0.8 (5)	C6—C7—C8—C3	0.7 (6)
N2—C2—C3—C4	-1.8 (6)	C4—C3—C8—C7	0.1 (6)
N1—C2—C3—C4	179.4 (4)	C2—C3—C8—C7	-179.7 (4)