

Acta Crystallographica Section E

## Structure Reports

Online

ISSN 1600-5368

# Ethyl 6-[4-(dimethylamino)phenyl]-4-hydroxy-2-oxo-4-(trifluoromethyl)hexahydropyrimidine-5-carboxylate

Xiao-Ping Song, Gong-Chun Li, Chang-Zeng Wu and Feng-Ling Yang\*

College of Chemistry and Chemical Engineering, Xuchang University, Henan Province 461000, People's Republic of China

Correspondence e-mail: actaeli@gmail.com

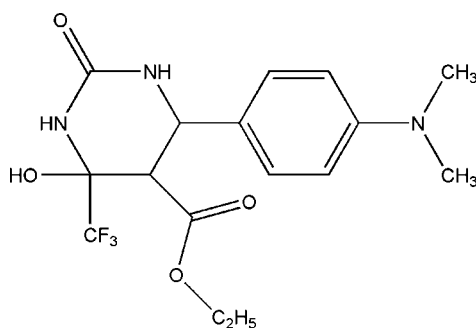
Received 2 April 2010; accepted 9 April 2010

 Key indicators: single-crystal X-ray study;  $T = 116$  K; mean  $\sigma(\text{C}-\text{C}) = 0.002$  Å;  $R$  factor = 0.037;  $wR$  factor = 0.107; data-to-parameter ratio = 12.3.

The title compound,  $\text{C}_{16}\text{H}_{20}\text{F}_3\text{N}_3\text{O}_4$ , was prepared by reaction of 4-(dimethylamino)benzaldehyde, ethyl 4,4,4-trifluoro-3-oxobutanoate and urea. In the title molecule, the pyrimidine ring adopts a half-chair conformation and there is an intramolecular hydrogen bond ( $\text{O}-\text{H}\cdots\text{O}$ ). The crystal structure is stabilized by two types intermolecular hydrogen bonds ( $\text{N}-\text{H}\cdots\text{O}$  and  $\text{N}-\text{H}\cdots\text{N}$ ).

## Related literature

For the bioactivity of dihydropyrimidines, see: Brier *et al.* (2004); Cochran *et al.* (2005); Moran *et al.* (2007); Zorkun *et al.* (2006). For the bioactivity of organofluorine compounds, see: Hermann *et al.* (2003); Ulrich (2004).



## Experimental

## Crystal data

 $\text{C}_{16}\text{H}_{20}\text{F}_3\text{N}_3\text{O}_4$   
 $M_r = 375.35$ 

 Monoclinic,  $P2_1/n$   
 $a = 13.319$  (4) Å

 $b = 7.923$  (2) Å  
 $c = 16.530$  (5) Å  
 $\beta = 92.720$  (5)°  
 $V = 1742.3$  (9) Å<sup>3</sup>  
 $Z = 4$ 

 Mo  $K\alpha$  radiation  
 $\mu = 0.12$  mm<sup>-1</sup>  
 $T = 116$  K  
 $0.24 \times 0.20 \times 0.14$  mm

## Data collection

 Rigaku Saturn CCD area-detector diffractometer  
 Absorption correction: multi-scan (*CrystalClear*; Rigaku/MS, 2005)  
 $T_{\min} = 0.971$ ,  $T_{\max} = 0.983$ 

 11487 measured reflections  
 3081 independent reflections  
 2522 reflections with  $I > 2\sigma(I)$   
 $R_{\text{int}} = 0.030$ 

## Refinement

 $R[F^2 > 2\sigma(F^2)] = 0.037$   
 $wR(F^2) = 0.107$   
 $S = 1.07$   
 3081 reflections  
 250 parameters  
 3 restraints

 H atoms treated by a mixture of independent and constrained refinement  
 $\Delta\rho_{\max} = 0.17$  e Å<sup>-3</sup>  
 $\Delta\rho_{\min} = -0.24$  e Å<sup>-3</sup>

Table 1

Hydrogen-bond geometry (Å, °).

$D-H\cdots A$	$D-H$	$H\cdots A$	$D\cdots A$	$D-H\cdots A$
$\text{O1}-\text{H1}\cdots\text{O3}$	0.86 (1)	1.97 (1)	2.7601 (16)	153 (2)
$\text{N1}-\text{H1A}\cdots\text{O2}^i$	0.90 (1)	1.91 (1)	2.8049 (15)	174 (2)
$\text{N2}-\text{H2A}\cdots\text{N3}^{ii}$	0.90 (1)	2.12 (1)	3.0241 (18)	178 (2)

 Symmetry codes: (i)  $-x + 2, -y + 2, -z + 2$ ; (ii)  $-x + \frac{3}{2}, y + \frac{1}{2}, -z + \frac{3}{2}$ .

Data collection: *CrystalClear* (Rigaku/MS, 2005); cell refinement: *CrystalClear*; data reduction: *CrystalClear*; program(s) used to solve structure: *SHELXS97* (Sheldrick, 2008); program(s) used to refine structure: *SHELXL97* (Sheldrick, 2008); molecular graphics: *SHELXTL* (Sheldrick, 2008); software used to prepare material for publication: *CrystalStructure* (Rigaku/MS, 2005).

This work was supported by the Natural Science Foundation of Henan Province, China (grant No. 082300420110), and the Natural Science Foundation of Henan Province Education Department, China (grant No. 2007150036).

Supplementary data and figures for this paper are available from the IUCr electronic archives (Reference: OM2331).

## References

- Brier, S., Lemaire, D., DeBonis, S., Forest, E. & Kozielski, F. (2004). *Biochemistry*, **43**, 13072–13082.  
 Cochran, J. C., Gatial, J. E., Kapoor, T. M. & Gilbert, S. P. (2005). *J. Biol. Chem.* **280**, 12658–12667.  
 Hermann, B., Erwin, H. & Hansjorg, K. (2003). US Patent No. 2003176284.  
 Moran, M. M., Fanger, C., Chong, J. A., McNamara, C., Zhen, X. G. & Mandel-Brehm, J. (2007). WO Patent No. 2007073505.  
 Rigaku/MS (2005). *CrystalClear* and *CrystalStructure*. Rigaku/MS, The Woodlands, Texas, USA.  
 Sheldrick, G. M. (2008). *Acta Cryst.* **A64**, 112–122.  
 Ulrich, H. (2004). US Patent No. 2004033897.  
 Zorkun, I. S., Sarac, S., Celebi, S. & Erol, K. (2006). *Bioorg. Med. Chem.* **14**, 8582–8589.

## supporting information

*Acta Cryst.* (2010). E66, o1083 [https://doi.org/10.1107/S1600536810013127]

## Ethyl 6-[4-(dimethylamino)phenyl]-4-hydroxy-2-oxo-4-(trifluoromethyl)hexahydropyrimidine-5-carboxylate

Xiao-Ping Song, Gong-Chun Li, Chang-Zeng Wu and Feng-Ling Yang

### S1. Comment

Dihydropyrimidine (DHPM) derivatives can be used as potential calcium channel blockers (Zorkun *et al.*, 2006), inhibitors of mitotic kinesin Eg5 for treating cancer (Cochran *et al.*, 2005; Brier *et al.*, 2004) and as TRPA1 modulators for treating pain (Moran *et al.*, 2007). Besides, compounds that contain fluorine have special bioactivity, for example, flumioxazin is a widely used herbicide (Hermann *et al.*, 2003; Ulrich, 2004). This led us to pay much attention to the synthesis and bioactivity of these important fused perfluoroalkylated heterocyclic compounds. During the synthesis of DHPM derivatives, the title compound, an intermediate, was isolated and confirmed by X-ray diffraction to elucidate the reaction mechanism. We report here the crystal structure of the title compound (Fig. 1).

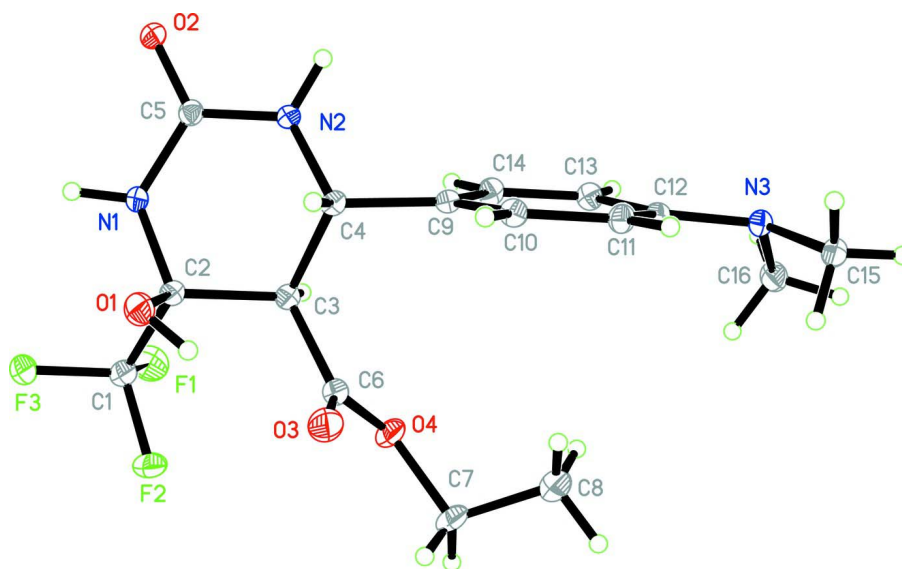
In the title molecule, the pyrimidine ring adopts a half-chair conformation, and there is an intramolecular hydrogen bond (O—H $\cdots$ O). The crystal structure is stabilized by two types intermolecular hydrogen bonds (N—H $\cdots$ O, and N—H $\cdots$ N).

### S2. Experimental

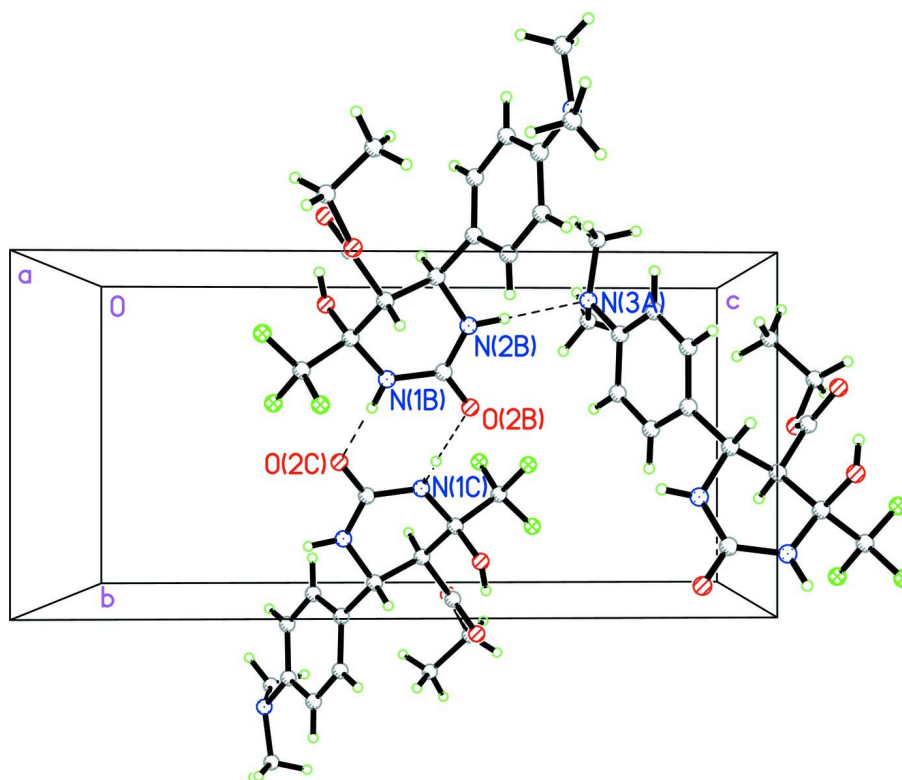
The title compound was synthesized by 4-(dimethylamino)-benzaldehyde (2.98 g, 20 mmol), ethyl 4,4,4-trifluoro-3-oxobutanoate (4.42 g, 24 mmol), and urea (1.80 g, 30 mmol), catalyzed by sulfamic acid (0.6 g), in the solvent of ethanol (20 ml), by refluxing for 3 h under the conditions of stirring. The solvent was evaporated in vacuo and the residue was washed with water. The title compound was recrystallized from ethanol and single crystals of (I) were obtained by slow evaporation.

### S3. Refinement

H atoms of N and O were positioned freely refined. The other H atoms were placed in calculated positions, with C—H = 0.93, 0.96, 0.97 or 0.98 Å, and included in the final cycles of refinement using a riding model, with  $U_{\text{iso}}(\text{H}) = 1.2U_{\text{eq}}(\text{C})$ .

**Figure 1**

The asymmetric unit of the title compound, (I), with displacement ellipsoids drawn at the 30% probability level.

**Figure 2**

The packing diagram of the title compound. Intermolecular hydrogen bonds are shown as dashed line.

## Ethyl 6-[4-(dimethylamino)phenyl]-4-hydroxy-2-oxo-4-(trifluoromethyl)hexahydropyrimidine-5-carboxylate

## Crystal data

 $C_{16}H_{20}F_3N_3O_4$  $M_r = 375.35$ Monoclinic,  $P2_1/n$  $a = 13.319$  (4) Å $b = 7.923$  (2) Å $c = 16.530$  (5) Å $\beta = 92.720$  (5)° $V = 1742.3$  (9) Å<sup>3</sup> $Z = 4$  $F(000) = 784$  $D_x = 1.431$  Mg m<sup>-3</sup>Mo  $K\alpha$  radiation,  $\lambda = 0.71073$  Å

Cell parameters from 6970 reflections

 $\theta = 1.5$ – $27.9$ ° $\mu = 0.12$  mm<sup>-1</sup> $T = 116$  K

Prism, colorless

 $0.24 \times 0.20 \times 0.14$  mm

## Data collection

Rigaku Saturn CCD area-detector  
diffractometer

Radiation source: rotating anode

Multilayer monochromator

Detector resolution: 14.63 pixels mm<sup>-1</sup> $\omega$  and  $\phi$  scansAbsorption correction: multi-scan  
(*CrystalClear*; Rigaku/MSO, 2005) $T_{\min} = 0.971$ ,  $T_{\max} = 0.983$ 

11487 measured reflections

3081 independent reflections

2522 reflections with  $I > 2\sigma(I)$  $R_{\text{int}} = 0.030$  $\theta_{\max} = 25.0$ °,  $\theta_{\min} = 1.9$ ° $h = -15$ → $15$  $k = -9$ → $9$  $l = -19$ → $18$ 

## Refinement

Refinement on  $F^2$ 

Least-squares matrix: full

 $R[F^2 > 2\sigma(F^2)] = 0.037$  $wR(F^2) = 0.107$  $S = 1.07$ 

3081 reflections

250 parameters

3 restraints

Primary atom site location: structure-invariant  
direct methodsSecondary atom site location: difference Fourier  
mapHydrogen site location: inferred from  
neighbouring sitesH atoms treated by a mixture of independent  
and constrained refinement $w = 1/[\sigma^2(F_o^2) + (0.0725P)^2]$ where  $P = (F_o^2 + 2F_c^2)/3$  $(\Delta/\sigma)_{\max} = 0.001$  $\Delta\rho_{\max} = 0.17$  e Å<sup>-3</sup> $\Delta\rho_{\min} = -0.24$  e Å<sup>-3</sup>

## Special details

**Geometry.** All esds (except the esd in the dihedral angle between two l.s. planes) are estimated using the full covariance matrix. The cell esds are taken into account individually in the estimation of esds in distances, angles and torsion angles; correlations between esds in cell parameters are only used when they are defined by crystal symmetry. An approximate (isotropic) treatment of cell esds is used for estimating esds involving l.s. planes.

**Refinement.** Refinement of  $F^2$  against ALL reflections. The weighted  $R$ -factor  $wR$  and goodness of fit  $S$  are based on  $F^2$ , conventional  $R$ -factors  $R$  are based on  $F$ , with  $F$  set to zero for negative  $F^2$ . The threshold expression of  $F^2 > \sigma(F^2)$  is used only for calculating  $R$ -factors(gt) etc. and is not relevant to the choice of reflections for refinement.  $R$ -factors based on  $F^2$  are statistically about twice as large as those based on  $F$ , and  $R$ -factors based on ALL data will be even larger.

Fractional atomic coordinates and isotropic or equivalent isotropic displacement parameters (Å<sup>2</sup>)

	$x$	$y$	$z$	$U_{\text{iso}}^*/U_{\text{eq}}$
F2	0.76872 (7)	0.70609 (12)	1.19210 (5)	0.0422 (3)
F3	0.87687 (7)	0.90599 (12)	1.18384 (5)	0.0419 (3)
F1	0.73912 (7)	0.91322 (12)	1.11033 (6)	0.0434 (3)

O1	0.93596 (8)	0.60732 (13)	1.11199 (6)	0.0292 (3)
O2	0.96896 (7)	0.91625 (12)	0.90354 (6)	0.0262 (3)
O3	0.78789 (9)	0.36331 (13)	1.10635 (6)	0.0385 (3)
O4	0.63911 (8)	0.47358 (14)	1.06174 (7)	0.0362 (3)
N1	0.90896 (9)	0.83310 (15)	1.02318 (7)	0.0231 (3)
N2	0.87955 (8)	0.67473 (14)	0.90588 (7)	0.0216 (3)
N3	0.57474 (8)	0.09436 (13)	0.76740 (7)	0.0214 (3)
C1	0.81144 (11)	0.81114 (19)	1.14029 (9)	0.0296 (4)
C2	0.86240 (10)	0.71282 (17)	1.07362 (8)	0.0220 (3)
C3	0.78493 (10)	0.60970 (16)	1.02222 (8)	0.0208 (3)
H3	0.7317	0.6850	1.0007	0.025*
C4	0.84102 (10)	0.53309 (17)	0.95139 (8)	0.0198 (3)
H4	0.8980	0.4669	0.9736	0.024*
C5	0.92246 (10)	0.81105 (16)	0.94208 (8)	0.0202 (3)
C6	0.73872 (11)	0.46902 (19)	1.06923 (9)	0.0275 (3)
C7	0.58484 (14)	0.3318 (2)	1.09539 (11)	0.0478 (5)
H7A	0.5231	0.3717	1.1176	0.057*
H7B	0.6256	0.2799	1.1388	0.057*
C8	0.56152 (16)	0.2067 (2)	1.03137 (11)	0.0555 (6)
H8A	0.5235	0.2597	0.9876	0.083*
H8B	0.5229	0.1164	1.0530	0.083*
H8C	0.6230	0.1625	1.0118	0.083*
C9	0.77484 (10)	0.41978 (16)	0.89851 (8)	0.0190 (3)
C10	0.79225 (10)	0.24776 (18)	0.89719 (8)	0.0213 (3)
H10	0.8479	0.2040	0.9262	0.026*
C11	0.72844 (10)	0.13904 (17)	0.85356 (8)	0.0219 (3)
H11	0.7419	0.0239	0.8535	0.026*
C12	0.64423 (10)	0.20114 (16)	0.80974 (8)	0.0195 (3)
C13	0.63014 (10)	0.37648 (17)	0.80716 (8)	0.0225 (3)
H13	0.5772	0.4215	0.7754	0.027*
C14	0.69393 (10)	0.48298 (17)	0.85123 (8)	0.0226 (3)
H14	0.6827	0.5988	0.8493	0.027*
C15	0.58978 (11)	-0.08702 (17)	0.77979 (8)	0.0254 (3)
H15A	0.6557	-0.1179	0.7640	0.038*
H15B	0.5403	-0.1483	0.7476	0.038*
H15C	0.5832	-0.1137	0.8359	0.038*
C16	0.46919 (10)	0.14840 (19)	0.77106 (9)	0.0301 (4)
H16A	0.4564	0.1830	0.8253	0.045*
H16B	0.4256	0.0561	0.7557	0.045*
H16C	0.4568	0.2412	0.7346	0.045*
H1	0.9050 (13)	0.5138 (16)	1.1199 (12)	0.054 (6)*
H1A	0.9442 (11)	0.9186 (15)	1.0458 (9)	0.032 (4)*
H2A	0.8942 (11)	0.6524 (19)	0.8542 (6)	0.032 (4)*

Atomic displacement parameters ( $\text{\AA}^2$ )

	$U^{11}$	$U^{22}$	$U^{33}$	$U^{12}$	$U^{13}$	$U^{23}$
F2	0.0505 (6)	0.0475 (6)	0.0302 (5)	-0.0197 (5)	0.0198 (4)	-0.0068 (4)

F3	0.0473 (6)	0.0502 (6)	0.0291 (5)	-0.0227 (5)	0.0115 (4)	-0.0174 (4)
F1	0.0429 (6)	0.0419 (6)	0.0464 (6)	0.0076 (4)	0.0123 (5)	-0.0114 (4)
O1	0.0280 (6)	0.0337 (6)	0.0254 (6)	-0.0022 (5)	-0.0052 (4)	0.0032 (5)
O2	0.0299 (6)	0.0269 (5)	0.0219 (5)	-0.0110 (4)	0.0029 (4)	0.0007 (4)
O3	0.0505 (8)	0.0332 (6)	0.0315 (6)	-0.0106 (5)	-0.0021 (5)	0.0088 (5)
O4	0.0305 (7)	0.0399 (7)	0.0393 (6)	-0.0165 (5)	0.0135 (5)	-0.0066 (5)
N1	0.0258 (7)	0.0239 (6)	0.0197 (6)	-0.0091 (5)	0.0022 (5)	-0.0034 (5)
N2	0.0252 (7)	0.0218 (6)	0.0180 (6)	-0.0073 (5)	0.0039 (5)	-0.0013 (5)
N3	0.0208 (6)	0.0217 (6)	0.0215 (6)	-0.0029 (5)	0.0001 (5)	-0.0020 (5)
C1	0.0296 (9)	0.0324 (8)	0.0274 (8)	-0.0096 (7)	0.0076 (6)	-0.0048 (7)
C2	0.0199 (7)	0.0257 (8)	0.0206 (7)	-0.0034 (6)	0.0013 (5)	0.0006 (6)
C3	0.0198 (7)	0.0216 (7)	0.0209 (7)	-0.0017 (5)	0.0010 (5)	0.0001 (6)
C4	0.0182 (7)	0.0199 (7)	0.0213 (7)	-0.0013 (5)	0.0014 (5)	0.0012 (6)
C5	0.0176 (7)	0.0215 (7)	0.0216 (7)	0.0001 (6)	0.0002 (5)	-0.0010 (6)
C6	0.0317 (9)	0.0284 (8)	0.0227 (7)	-0.0091 (7)	0.0055 (6)	-0.0051 (7)
C7	0.0497 (11)	0.0533 (11)	0.0422 (10)	-0.0325 (9)	0.0220 (8)	-0.0074 (9)
C8	0.0750 (15)	0.0473 (11)	0.0461 (11)	-0.0330 (10)	0.0243 (10)	-0.0123 (9)
C9	0.0187 (7)	0.0203 (7)	0.0181 (7)	-0.0021 (5)	0.0029 (5)	0.0003 (5)
C10	0.0188 (7)	0.0236 (7)	0.0214 (7)	0.0022 (6)	-0.0006 (5)	0.0007 (6)
C11	0.0247 (8)	0.0166 (7)	0.0244 (7)	0.0005 (6)	0.0021 (6)	-0.0005 (6)
C12	0.0188 (7)	0.0242 (7)	0.0159 (6)	-0.0029 (5)	0.0037 (5)	-0.0014 (5)
C13	0.0194 (7)	0.0250 (8)	0.0227 (7)	0.0014 (6)	-0.0028 (6)	0.0013 (6)
C14	0.0258 (8)	0.0170 (7)	0.0250 (7)	0.0014 (6)	0.0006 (6)	0.0016 (6)
C15	0.0295 (8)	0.0238 (8)	0.0229 (7)	-0.0064 (6)	0.0005 (6)	-0.0007 (6)
C16	0.0216 (8)	0.0375 (9)	0.0312 (8)	-0.0033 (6)	0.0012 (6)	-0.0079 (7)

*Geometric parameters (Å, °)*

F2—C1	1.3403 (17)	C4—H4	0.9800
F3—C1	1.3353 (17)	C7—C8	1.472 (2)
F1—C1	1.3348 (18)	C7—H7A	0.9700
O1—C2	1.4149 (17)	C7—H7B	0.9700
O1—H1	0.860 (9)	C8—H8A	0.9600
O2—C5	1.2335 (16)	C8—H8B	0.9600
O3—C6	1.2119 (19)	C8—H8C	0.9600
O4—C6	1.3271 (19)	C9—C10	1.3828 (19)
O4—C7	1.4601 (18)	C9—C14	1.3938 (19)
N1—C5	1.3722 (18)	C10—C11	1.3878 (19)
N1—C2	1.4273 (17)	C10—H10	0.9300
N1—H1A	0.896 (9)	C11—C12	1.3956 (19)
N2—C5	1.3486 (18)	C11—H11	0.9300
N2—C4	1.4578 (17)	C12—C13	1.4021 (19)
N2—H2A	0.902 (9)	C13—C14	1.3805 (19)
N3—C12	1.4145 (17)	C13—H13	0.9300
N3—C15	1.4640 (17)	C14—H14	0.9300
N3—C16	1.4735 (18)	C15—H15A	0.9600
C1—C2	1.534 (2)	C15—H15B	0.9600
C2—C3	1.5397 (19)	C15—H15C	0.9600

C3—C6	1.5067 (19)	C16—H16A	0.9600
C3—C4	1.5429 (18)	C16—H16B	0.9600
C3—H3	0.9800	C16—H16C	0.9600
C4—C9	1.5079 (19)		
C2—O1—H1	104.5 (13)	O4—C7—H7A	109.8
C6—O4—C7	117.02 (14)	C8—C7—H7A	109.8
C5—N1—C2	124.51 (12)	O4—C7—H7B	109.8
C5—N1—H1A	114.4 (11)	C8—C7—H7B	109.8
C2—N1—H1A	119.6 (10)	H7A—C7—H7B	108.2
C5—N2—C4	122.66 (11)	C7—C8—H8A	109.5
C5—N2—H2A	118.1 (10)	C7—C8—H8B	109.5
C4—N2—H2A	115.7 (10)	H8A—C8—H8B	109.5
C12—N3—C15	115.84 (11)	C7—C8—H8C	109.5
C12—N3—C16	114.14 (11)	H8A—C8—H8C	109.5
C15—N3—C16	113.82 (11)	H8B—C8—H8C	109.5
F1—C1—F3	107.46 (12)	C10—C9—C14	118.10 (12)
F1—C1—F2	107.01 (12)	C10—C9—C4	120.13 (12)
F3—C1—F2	106.92 (12)	C14—C9—C4	121.75 (12)
F1—C1—C2	112.17 (12)	C9—C10—C11	121.39 (12)
F3—C1—C2	111.93 (12)	C9—C10—H10	119.3
F2—C1—C2	111.06 (12)	C11—C10—H10	119.3
O1—C2—N1	110.21 (11)	C10—C11—C12	120.54 (13)
O1—C2—C1	107.38 (11)	C10—C11—H11	119.7
N1—C2—C1	107.45 (12)	C12—C11—H11	119.7
O1—C2—C3	111.44 (11)	C11—C12—C13	117.92 (12)
N1—C2—C3	109.29 (11)	C11—C12—N3	122.47 (12)
C1—C2—C3	110.99 (11)	C13—C12—N3	119.60 (12)
C6—C3—C2	112.79 (11)	C14—C13—C12	120.75 (12)
C6—C3—C4	108.95 (11)	C14—C13—H13	119.6
C2—C3—C4	106.95 (11)	C12—C13—H13	119.6
C6—C3—H3	109.4	C13—C14—C9	121.09 (12)
C2—C3—H3	109.4	C13—C14—H14	119.5
C4—C3—H3	109.4	C9—C14—H14	119.5
N2—C4—C9	111.69 (11)	N3—C15—H15A	109.5
N2—C4—C3	106.48 (11)	N3—C15—H15B	109.5
C9—C4—C3	112.54 (11)	H15A—C15—H15B	109.5
N2—C4—H4	108.7	N3—C15—H15C	109.5
C9—C4—H4	108.7	H15A—C15—H15C	109.5
C3—C4—H4	108.7	H15B—C15—H15C	109.5
O2—C5—N2	121.65 (12)	N3—C16—H16A	109.5
O2—C5—N1	120.72 (12)	N3—C16—H16B	109.5
N2—C5—N1	117.58 (12)	H16A—C16—H16B	109.5
O3—C6—O4	125.44 (14)	N3—C16—H16C	109.5
O3—C6—C3	123.25 (14)	H16A—C16—H16C	109.5
O4—C6—C3	111.27 (13)	H16B—C16—H16C	109.5
O4—C7—C8	109.59 (14)		

C5—N1—C2—O1	93.48 (15)	C2—N1—C5—N2	7.3 (2)
C5—N1—C2—C1	-149.82 (13)	C7—O4—C6—O3	-5.4 (2)
C5—N1—C2—C3	-29.31 (18)	C7—O4—C6—C3	172.21 (12)
F1—C1—C2—O1	-179.00 (11)	C2—C3—C6—O3	-53.65 (18)
F3—C1—C2—O1	60.12 (15)	C4—C3—C6—O3	64.94 (17)
F2—C1—C2—O1	-59.30 (14)	C2—C3—C6—O4	128.71 (12)
F1—C1—C2—N1	62.46 (15)	C4—C3—C6—O4	-112.70 (13)
F3—C1—C2—N1	-58.43 (15)	C6—O4—C7—C8	-94.93 (19)
F2—C1—C2—N1	-177.85 (11)	N2—C4—C9—C10	128.63 (13)
F1—C1—C2—C3	-56.98 (16)	C3—C4—C9—C10	-111.65 (14)
F3—C1—C2—C3	-177.86 (11)	N2—C4—C9—C14	-52.72 (16)
F2—C1—C2—C3	62.72 (15)	C3—C4—C9—C14	67.00 (15)
O1—C2—C3—C6	52.81 (15)	C14—C9—C10—C11	-3.27 (19)
N1—C2—C3—C6	174.86 (11)	C4—C9—C10—C11	175.43 (12)
C1—C2—C3—C6	-66.81 (15)	C9—C10—C11—C12	-0.2 (2)
O1—C2—C3—C4	-66.94 (13)	C10—C11—C12—C13	4.00 (19)
N1—C2—C3—C4	55.11 (14)	C10—C11—C12—N3	-177.11 (11)
C1—C2—C3—C4	173.44 (11)	C15—N3—C12—C11	6.82 (18)
C5—N2—C4—C9	165.79 (12)	C16—N3—C12—C11	141.96 (13)
C5—N2—C4—C3	42.56 (16)	C15—N3—C12—C13	-174.31 (12)
C6—C3—C4—N2	177.15 (11)	C16—N3—C12—C13	-39.17 (16)
C2—C3—C4—N2	-60.65 (13)	C11—C12—C13—C14	-4.37 (19)
C6—C3—C4—C9	54.46 (15)	N3—C12—C13—C14	176.70 (12)
C2—C3—C4—C9	176.66 (11)	C12—C13—C14—C9	1.0 (2)
C4—N2—C5—O2	168.05 (12)	C10—C9—C14—C13	2.89 (19)
C4—N2—C5—N1	-14.73 (19)	C4—C9—C14—C13	-175.79 (12)
C2—N1—C5—O2	-175.47 (12)		

*Hydrogen-bond geometry (Å, °)*

<i>D</i> —H $\cdots$ <i>A</i>	<i>D</i> —H	H $\cdots$ <i>A</i>	<i>D</i> $\cdots$ <i>A</i>	<i>D</i> —H $\cdots$ <i>A</i>
O1—H1 $\cdots$ O3	0.86 (1)	1.97 (1)	2.7601 (16)	153 (2)
N1—H1 <i>A</i> $\cdots$ O2 <sup>i</sup>	0.90 (1)	1.91 (1)	2.8049 (15)	174 (2)
N2—H2 <i>A</i> $\cdots$ N3 <sup>ii</sup>	0.90 (1)	2.12 (1)	3.0241 (18)	178 (2)

Symmetry codes: (i)  $-x+2, -y+2, -z+2$ ; (ii)  $-x+3/2, y+1/2, -z+3/2$ .