

Acta Crystallographica Section E

Structure Reports

Online

ISSN 1600-5368

4,4'-(Propane-1,3-diylidioxy)dibenzaldehyde

Qamar Ali,^a Muhammad Raza Shah^a and Seik Weng Ng^{b*}^aHEJ Research Institute of Chemistry, International Center for Chemical and Biological Sciences, University of Karachi, Karachi 75270, Pakistan, and^bDepartment of Chemistry, University of Malaya, 50603 Kuala Lumpur, Malaysia

Correspondence e-mail: seikweng@um.edu.my

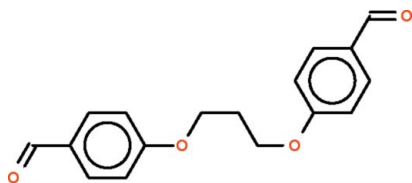
Received 2 June 2010; accepted 3 June 2010

Key indicators: single-crystal X-ray study; $T = 100$ K; mean $\sigma(\text{C}-\text{C}) = 0.002$ Å; R factor = 0.039; wR factor = 0.106; data-to-parameter ratio = 16.4.

The title compound, $\text{C}_{17}\text{H}_{16}\text{O}_4$, is a dialdehyde in which two formylphenoxy units are linked by a $-\text{CH}_2\text{CH}_2\text{CH}_2-$ chain; the molecule is V-shaped with the middle methylene C atom as the apex. The two benzene rings are aligned at 77.4 (1)°. In the crystal, molecules are linked into centrosymmetric dimers by pairs of non-classical $\text{C}-\text{H}\cdots\text{O}$ hydrogen bonds.

Related literature

For background to Schiff bases derived by condensing similar dialdehydes with primary amines, see: Zhang *et al.* (2008). For the crystal structure of the 2,2'-disubstituted analog, see: Hu *et al.* (2005).



Experimental

Crystal data

 $\text{C}_{17}\text{H}_{16}\text{O}_4$ $M_r = 284.30$

Monoclinic, $P2_1/n$
 $a = 15.3323$ (15) Å
 $b = 4.6173$ (5) Å
 $c = 20.2800$ (19) Å
 $\beta = 104.783$ (1)°
 $V = 1388.2$ (2) Å³

$Z = 4$
 Mo $K\alpha$ radiation
 $\mu = 0.10$ mm⁻¹
 $T = 100$ K
 $0.25 \times 0.20 \times 0.10$ mm

Data collection

Bruker SMART APEXII
 diffractometer
 8297 measured reflections

3113 independent reflections
 2538 reflections with $I > 2\sigma(I)$
 $R_{\text{int}} = 0.027$

Refinement

$R[F^2 > 2\sigma(F^2)] = 0.039$
 $wR(F^2) = 0.106$
 $S = 1.03$
 3113 reflections

190 parameters
 H-atom parameters constrained
 $\Delta\rho_{\text{max}} = 0.25$ e Å⁻³
 $\Delta\rho_{\text{min}} = -0.22$ e Å⁻³

Table 1

Hydrogen-bond geometry (Å, °).

$D-H\cdots A$	$D-H$	$H\cdots A$	$D\cdots A$	$D-H\cdots A$
$\text{C16}-\text{H16}\cdots\text{O1}^i$	0.95	2.41	3.287 (2)	154

Symmetry code: (i) $-x + 1, -y + 2, -z + 1$.

Data collection: *APEX2* (Bruker, 2009); cell refinement: *SAINT* (Bruker, 2009); data reduction: *SAINT*; program(s) used to solve structure: *SHELXS97* (Sheldrick, 2008); program(s) used to refine structure: *SHELXL97* (Sheldrick, 2008); molecular graphics: *X-SEED* (Barbour, 2001); software used to prepare material for publication: *pubCIF* (Westrip, 2010).

The authors thank the University of Karachi and the University of Malaya for supporting this study.

Supplementary data and figures for this paper are available from the IUCr electronic archives (Reference: CI5094).

References

- Barbour, L. J. (2001). *J. Supramol. Chem.* **1**, 189–191.
 Bruker (2009). *APEX2* and *SAINT*. Bruker AXS Inc., Madison, Wisconsin, USA.
 Hu, P.-Z., Ma, L.-F., Wang, J.-G., Zhao, B.-T. & Wang, L.-Y. (2005). *Acta Cryst.* **E61**, o2775–o2777.
 Sheldrick, G. M. (2008). *Acta Cryst.* **A64**, 112–122.
 Westrip, S. P. (2010). *J. Appl. Cryst.* **43**. Submitted.
 Zhang, Y., Deng, X., Wang, L. & Wei, T. (2008). *J. Incl. Phenom. Macrocycl. Chem.* **60**, 313–319.

supporting information

Acta Cryst. (2010). E66, o1620 [doi:10.1107/S1600536810021124]

4,4'-(Propane-1,3-diylidioxy)dibenzaldehyde

Qamar Ali, Muhammad Raza Shah and Seik Weng Ng

S1. Comment

The two-arm aldehyde is intended for condensation with primary amines to form Schiff bases, which, in a subsequent step, will be reacted with β -cyclodextrin to furnish inclusion compounds. The idea for this theme draws on a report on such compounds of poly(Schiff bases) (Zhang *et al.*, 2008). The flexibility of the Schiff base can be controlled by varying the position of the formyl group; the title compound has the the formyl groups in the 4,4'-positions. The crystal structure of the 2,2'-substituted compound has been reported (Hu *et al.*, 2005). The molecule of $C_{17}H_{16}O_4$ (Scheme I) is V-shaped with the middle methylene carbon as the apex (Fig. 1).

S2. Experimental

4-Hydroxybenzaldehyde (1 g, 8.2 mmol) was dissolved in acetone (25 ml). To the solution was added potassium carbonate (2.3 g, 16.4 mmol). The mixture was heated for 1 h. 1,3-Dibromopropane (0.29 ml, 2.7 mmol) was added and the mixture heated for another hour. The mixture was set aside for 8 h. The solvent was removed and the solid material was extracted with ethyl acetate. The solvent was again removed and the product purified by column chromatography by using dichloromethane-hexane (1:4) as mobile phase. Single crystals were obtained by recrystallization from dichloromethane.

S3. Refinement

H atoms were placed in calculated positions [$C-H = 0.95-0.99 \text{ \AA}$] and were included in the refinement in the riding model approximation, with $U_{iso}(H) = 1.2U_{eq}(C)$.

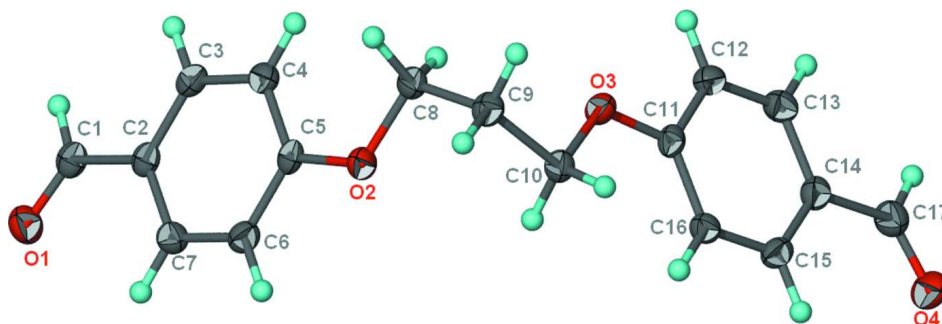


Figure 1

Displacement ellipsoid plot (Barbour, 2001) of $C_{17}H_{16}O_4$ at the 70% probability level; H atoms are drawn as spheres of arbitrary radius.

4,4'-(Propane-1,3-diylidioxy)dibenzaldehyde*Crystal data*C₁₇H₁₆O₄ $M_r = 284.30$ Monoclinic, $P2_1/n$

Hall symbol: -P 2yn

 $a = 15.3323$ (15) Å $b = 4.6173$ (5) Å $c = 20.2800$ (19) Å $\beta = 104.783$ (1)° $V = 1388.2$ (2) Å³ $Z = 4$ $F(000) = 600$ $D_x = 1.360$ Mg m⁻³Mo $K\alpha$ radiation, $\lambda = 0.71073$ Å

Cell parameters from 2677 reflections

 $\theta = 3.1$ – 28.0 ° $\mu = 0.10$ mm⁻¹ $T = 100$ K

Plate, colourless

 $0.25 \times 0.20 \times 0.10$ mm*Data collection*

Bruker SMART APEXII

diffractometer

Radiation source: fine-focus sealed tube

Graphite monochromator

 ω scans

8297 measured reflections

3113 independent reflections

2538 reflections with $I > 2\sigma(I)$ $R_{\text{int}} = 0.027$ $\theta_{\text{max}} = 27.5$ °, $\theta_{\text{min}} = 1.5$ ° $h = -19$ → 19 $k = -5$ → 5 $l = -19$ → 26 *Refinement*Refinement on F^2

Least-squares matrix: full

 $R[F^2 > 2\sigma(F^2)] = 0.039$ $wR(F^2) = 0.106$ $S = 1.03$

3113 reflections

190 parameters

0 restraints

Primary atom site location: structure-invariant

direct methods

Secondary atom site location: difference Fourier map

Hydrogen site location: inferred from neighbouring sites

H-atom parameters constrained

 $w = 1/[\sigma^2(F_o^2) + (0.0513P)^2 + 0.4617P]$ where $P = (F_o^2 + 2F_c^2)/3$ $(\Delta/\sigma)_{\text{max}} = 0.001$ $\Delta\rho_{\text{max}} = 0.25$ e Å⁻³ $\Delta\rho_{\text{min}} = -0.22$ e Å⁻³*Fractional atomic coordinates and isotropic or equivalent isotropic displacement parameters (Å²)*

	<i>x</i>	<i>y</i>	<i>z</i>	$U_{\text{iso}}^*/U_{\text{eq}}$
O1	0.33791 (6)	1.4272 (2)	0.27971 (5)	0.0247 (2)
O2	0.37445 (6)	0.5332 (2)	0.52487 (5)	0.0191 (2)
O3	0.36450 (6)	0.5695 (2)	0.70403 (5)	0.0191 (2)
O4	0.58320 (6)	1.2514 (2)	0.97043 (5)	0.0290 (3)
C1	0.28543 (9)	1.3387 (3)	0.31097 (7)	0.0193 (3)
H1	0.2260	1.4154	0.2992	0.023*
C2	0.30737 (8)	1.1217 (3)	0.36563 (7)	0.0171 (3)
C3	0.24107 (8)	1.0286 (3)	0.39613 (7)	0.0183 (3)
H3	0.1816	1.1028	0.3805	0.022*
C4	0.25983 (8)	0.8289 (3)	0.44913 (7)	0.0182 (3)
H4	0.2137	0.7657	0.4694	0.022*
C5	0.34744 (8)	0.7227 (3)	0.47213 (6)	0.0166 (3)
C6	0.41484 (8)	0.8113 (3)	0.44128 (7)	0.0188 (3)
H6	0.4742	0.7361	0.4566	0.023*

C7	0.39463 (9)	1.0082 (3)	0.38860 (7)	0.0192 (3)
H7	0.4404	1.0678	0.3676	0.023*
C8	0.30783 (8)	0.4333 (3)	0.55834 (7)	0.0182 (3)
H8A	0.2590	0.3283	0.5257	0.022*
H8B	0.2810	0.5991	0.5771	0.022*
C9	0.35588 (9)	0.2331 (3)	0.61526 (7)	0.0190 (3)
H9A	0.3901	0.0869	0.5964	0.023*
H9B	0.3103	0.1290	0.6331	0.023*
C10	0.42019 (8)	0.3892 (3)	0.67370 (7)	0.0176 (3)
H10A	0.4544	0.2486	0.7074	0.021*
H10B	0.4635	0.5084	0.6567	0.021*
C11	0.40426 (8)	0.7236 (3)	0.76107 (6)	0.0164 (3)
C12	0.34516 (8)	0.8830 (3)	0.78886 (7)	0.0189 (3)
H12	0.2821	0.8762	0.7685	0.023*
C13	0.37858 (9)	1.0507 (3)	0.84602 (7)	0.0202 (3)
H13	0.3383	1.1611	0.8647	0.024*
C14	0.47139 (8)	1.0595 (3)	0.87679 (7)	0.0187 (3)
C15	0.52930 (8)	0.8986 (3)	0.84844 (7)	0.0189 (3)
H15	0.5923	0.9038	0.8691	0.023*
C16	0.49718 (8)	0.7308 (3)	0.79069 (7)	0.0174 (3)
H16	0.5375	0.6227	0.7716	0.021*
C17	0.50495 (9)	1.2379 (3)	0.93787 (7)	0.0235 (3)
H17	0.4622	1.3516	0.9531	0.028*

Atomic displacement parameters (Å²)

	U^{11}	U^{22}	U^{33}	U^{12}	U^{13}	U^{23}
O1	0.0269 (5)	0.0271 (5)	0.0213 (5)	0.0011 (4)	0.0081 (4)	0.0041 (4)
O2	0.0179 (4)	0.0231 (5)	0.0158 (5)	0.0023 (4)	0.0036 (4)	0.0036 (4)
O3	0.0165 (4)	0.0234 (5)	0.0163 (5)	0.0004 (4)	0.0020 (3)	-0.0030 (4)
O4	0.0248 (5)	0.0375 (6)	0.0228 (6)	-0.0053 (4)	0.0027 (4)	-0.0083 (5)
C1	0.0220 (6)	0.0177 (6)	0.0168 (7)	0.0004 (5)	0.0027 (5)	-0.0033 (5)
C2	0.0200 (6)	0.0162 (6)	0.0139 (6)	-0.0002 (5)	0.0020 (5)	-0.0036 (5)
C3	0.0168 (6)	0.0190 (6)	0.0169 (7)	0.0015 (5)	0.0006 (5)	-0.0027 (5)
C4	0.0171 (6)	0.0207 (6)	0.0165 (7)	-0.0013 (5)	0.0039 (5)	-0.0019 (5)
C5	0.0197 (6)	0.0166 (6)	0.0118 (6)	0.0005 (5)	0.0010 (5)	-0.0027 (5)
C6	0.0166 (6)	0.0212 (7)	0.0177 (7)	0.0022 (5)	0.0026 (5)	-0.0018 (5)
C7	0.0189 (6)	0.0211 (7)	0.0180 (7)	-0.0012 (5)	0.0055 (5)	-0.0017 (5)
C8	0.0187 (6)	0.0199 (7)	0.0158 (7)	-0.0021 (5)	0.0039 (5)	-0.0018 (5)
C9	0.0208 (6)	0.0174 (6)	0.0181 (7)	-0.0019 (5)	0.0035 (5)	-0.0009 (5)
C10	0.0184 (6)	0.0182 (6)	0.0160 (7)	0.0010 (5)	0.0038 (5)	-0.0005 (5)
C11	0.0191 (6)	0.0155 (6)	0.0135 (6)	-0.0013 (5)	0.0022 (5)	0.0025 (5)
C12	0.0154 (6)	0.0218 (7)	0.0192 (7)	-0.0006 (5)	0.0037 (5)	0.0012 (5)
C13	0.0194 (6)	0.0205 (7)	0.0221 (7)	0.0011 (5)	0.0077 (5)	-0.0014 (6)
C14	0.0205 (6)	0.0190 (6)	0.0163 (7)	-0.0018 (5)	0.0037 (5)	0.0006 (5)
C15	0.0160 (6)	0.0204 (7)	0.0186 (7)	-0.0006 (5)	0.0015 (5)	0.0027 (5)
C16	0.0165 (6)	0.0190 (6)	0.0173 (7)	0.0016 (5)	0.0053 (5)	0.0009 (5)
C17	0.0242 (7)	0.0258 (7)	0.0214 (7)	-0.0022 (6)	0.0073 (5)	-0.0026 (6)

Geometric parameters (Å, °)

O1—C1	1.2152 (16)	C8—H8A	0.99
O2—C5	1.3620 (15)	C8—H8B	0.99
O2—C8	1.4389 (15)	C9—C10	1.5167 (17)
O3—C11	1.3623 (15)	C9—H9A	0.99
O3—C10	1.4382 (15)	C9—H9B	0.99
O4—C17	1.2145 (17)	C10—H10A	0.99
C1—C2	1.4682 (19)	C10—H10B	0.99
C1—H1	0.95	C11—C12	1.3931 (18)
C2—C3	1.3863 (18)	C11—C16	1.3981 (17)
C2—C7	1.4014 (18)	C12—C13	1.3796 (19)
C3—C4	1.3894 (19)	C12—H12	0.95
C3—H3	0.95	C13—C14	1.4009 (17)
C4—C5	1.3938 (18)	C13—H13	0.95
C4—H4	0.95	C14—C15	1.3895 (19)
C5—C6	1.3989 (18)	C14—C17	1.4674 (19)
C6—C7	1.3765 (19)	C15—C16	1.3859 (18)
C6—H6	0.95	C15—H15	0.95
C7—H7	0.95	C16—H16	0.95
C8—C9	1.5153 (18)	C17—H17	0.95
C5—O2—C8	117.78 (10)	C10—C9—H9A	108.9
C11—O3—C10	118.66 (9)	C8—C9—H9B	108.9
O1—C1—C2	124.65 (12)	C10—C9—H9B	108.9
O1—C1—H1	117.7	H9A—C9—H9B	107.7
C2—C1—H1	117.7	O3—C10—C9	105.71 (10)
C3—C2—C7	118.83 (12)	O3—C10—H10A	110.6
C3—C2—C1	119.72 (11)	C9—C10—H10A	110.6
C7—C2—C1	121.44 (12)	O3—C10—H10B	110.6
C2—C3—C4	121.36 (12)	C9—C10—H10B	110.6
C2—C3—H3	119.3	H10A—C10—H10B	108.7
C4—C3—H3	119.3	O3—C11—C12	115.02 (11)
C3—C4—C5	118.95 (12)	O3—C11—C16	124.28 (11)
C3—C4—H4	120.5	C12—C11—C16	120.69 (12)
C5—C4—H4	120.5	C13—C12—C11	119.74 (11)
O2—C5—C4	124.25 (12)	C13—C12—H12	120.1
O2—C5—C6	115.34 (11)	C11—C12—H12	120.1
C4—C5—C6	120.40 (12)	C12—C13—C14	120.51 (12)
C7—C6—C5	119.66 (12)	C12—C13—H13	119.7
C7—C6—H6	120.2	C14—C13—H13	119.7
C5—C6—H6	120.2	C15—C14—C13	118.95 (12)
C6—C7—C2	120.77 (12)	C15—C14—C17	121.73 (12)
C6—C7—H7	119.6	C13—C14—C17	119.32 (12)
C2—C7—H7	119.6	C16—C15—C14	121.44 (12)
O2—C8—C9	106.81 (10)	C16—C15—H15	119.3
O2—C8—H8A	110.4	C14—C15—H15	119.3
C9—C8—H8A	110.4	C15—C16—C11	118.67 (12)

O2—C8—H8B	110.4	C15—C16—H16	120.7
C9—C8—H8B	110.4	C11—C16—H16	120.7
H8A—C8—H8B	108.6	O4—C17—C14	124.94 (13)
C8—C9—C10	113.45 (11)	O4—C17—H17	117.5
C8—C9—H9A	108.9	C14—C17—H17	117.5
O1—C1—C2—C3	-177.57 (13)	C11—O3—C10—C9	176.03 (10)
O1—C1—C2—C7	3.3 (2)	C8—C9—C10—O3	65.84 (13)
C7—C2—C3—C4	0.75 (19)	C10—O3—C11—C12	-177.41 (11)
C1—C2—C3—C4	-178.41 (12)	C10—O3—C11—C16	3.47 (18)
C2—C3—C4—C5	0.48 (19)	O3—C11—C12—C13	-178.89 (12)
C8—O2—C5—C4	0.89 (18)	C16—C11—C12—C13	0.26 (19)
C8—O2—C5—C6	-179.69 (11)	C11—C12—C13—C14	-0.7 (2)
C3—C4—C5—O2	178.02 (12)	C12—C13—C14—C15	0.6 (2)
C3—C4—C5—C6	-1.37 (19)	C12—C13—C14—C17	-179.52 (13)
O2—C5—C6—C7	-178.41 (11)	C13—C14—C15—C16	0.0 (2)
C4—C5—C6—C7	1.0 (2)	C17—C14—C15—C16	-179.92 (12)
C5—C6—C7—C2	0.2 (2)	C14—C15—C16—C11	-0.42 (19)
C3—C2—C7—C6	-1.1 (2)	O3—C11—C16—C15	179.37 (12)
C1—C2—C7—C6	178.04 (12)	C12—C11—C16—C15	0.29 (19)
C5—O2—C8—C9	-178.76 (10)	C15—C14—C17—O4	-3.7 (2)
O2—C8—C9—C10	70.22 (13)	C13—C14—C17—O4	176.44 (14)

Hydrogen-bond geometry (Å, °)

<i>D</i> —H \cdots <i>A</i>	<i>D</i> —H	H \cdots <i>A</i>	<i>D</i> \cdots <i>A</i>	<i>D</i> —H \cdots <i>A</i>
C6—H6 \cdots O2 ⁱ	0.95	2.57	3.508 (2)	168
C16—H16 \cdots O1 ⁱⁱ	0.95	2.41	3.287 (2)	154

Symmetry codes: (i) $-x+1, -y+1, -z+1$; (ii) $-x+1, -y+2, -z+1$.