

Acta Crystallographica Section E

Structure Reports

Online

ISSN 1600-5368

N-(2,3,4-Trifluorophenyl)phthalimide

Xian-Shu Fu, Xiao-Ping Yu, Wei-Min Wang* and Fang Lin

College of Life Sciences, China Jiliang University, Hangzhou 310018, People's Republic of China

Correspondence e-mail: clshangzhou@yahoo.com.cn

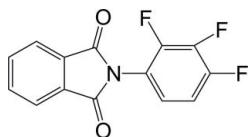
Received 7 June 2010; accepted 22 June 2010

 Key indicators: single-crystal X-ray study; $T = 113$ K; mean $\sigma(\text{C}-\text{C}) = 0.002$ Å; R factor = 0.034; wR factor = 0.094; data-to-parameter ratio = 10.9.

In the title compound, $\text{C}_{14}\text{H}_6\text{F}_3\text{NO}_2$, the benzene ring and the phthalimide ring system make a dihedral angle of $60.12(7)^\circ$. Weak intermolecular $\text{C}-\text{H}\cdots\text{O}$ and $\text{C}-\text{H}\cdots\text{F}$ hydrogen bonds are present in the crystal structure.

Related literature

The title compound is a key intermediate in the synthesis of organic electro-luminescent materials, see: Han & Kay (2005). For the synthesis, see: Valkonen *et al.* (2007); Barchin *et al.* (2002). For related structures, see: Xu *et al.* (2006); Fu *et al.* (2010).



Experimental

Crystal data

 $\text{C}_{14}\text{H}_6\text{F}_3\text{NO}_2$
 $M_r = 277.20$

 Monoclinic, $P2_1/n$
 $a = 6.8422(14)$ Å

 $b = 21.082(4)$ Å

 $c = 7.9727(16)$ Å

 $\beta = 101.98(3)^\circ$
 $V = 1125.0(4)$ Å³
 $Z = 4$

 Mo $K\alpha$ radiation

 $\mu = 0.14$ mm⁻¹
 $T = 113$ K

 $0.20 \times 0.18 \times 0.12$ mm

Data collection

Rigaku Saturn CCD area-detector diffractometer

 Absorption correction: multi-scan (*CrystalClear*; Rigaku, 2005)

 $T_{\min} = 0.972$, $T_{\max} = 0.983$

8049 measured reflections

1980 independent reflections

 1603 reflections with $I > 2\sigma(I)$
 $R_{\text{int}} = 0.034$

Refinement

 $R[F^2 > 2\sigma(F^2)] = 0.034$
 $wR(F^2) = 0.094$
 $S = 1.03$

1980 reflections

182 parameters

H-atom parameters constrained

 $\Delta\rho_{\text{max}} = 0.34$ e Å⁻³
 $\Delta\rho_{\text{min}} = -0.21$ e Å⁻³

Table 1

Hydrogen-bond geometry (Å, °).

$D-\text{H}\cdots A$	$D-\text{H}$	$\text{H}\cdots A$	$D\cdots A$	$D-\text{H}\cdots A$
$\text{C4}-\text{H4}\cdots\text{O2}^{\text{i}}$	0.95	2.55	3.1855 (18)	124
$\text{C10}-\text{H10}\cdots\text{F1}^{\text{ii}}$	0.95	2.54	3.3647 (18)	145
$\text{C11}-\text{H11}\cdots\text{O1}^{\text{iii}}$	0.95	2.55	3.428 (2)	154

 Symmetry codes: (i) $x, y, z - 1$; (ii) $x + \frac{1}{2}, -y + \frac{1}{2}, z - \frac{1}{2}$; (iii) $x + \frac{1}{2}, -y + \frac{1}{2}, z + \frac{1}{2}$.

Data collection: *CrystalClear* (Rigaku, 2005); cell refinement: *CrystalClear*; data reduction: *CrystalClear*; program(s) used to solve structure: *SHELXS97* (Sheldrick, 2008); program(s) used to refine structure: *SHELXL97* (Sheldrick, 2008); molecular graphics: *SHELXTL* (Sheldrick, 2008); software used to prepare material for publication: *SHELXTL*.

The work was supported by the Major Research Program of Zhejiang Province (No. 2008 C02007-2) and the Zhejiang Provincial Natural Science Foundation of China (No. Y307128).

Supplementary data and figures for this paper are available from the IUCr electronic archives (Reference: NG2787).

References

- Barchin, B. M., Cuadro, A. M. & Alvarez-Builla, J. (2002). *Synlett*, **2**, 343–345.
 Fu, X.-S., Yu, X.-P., Wang, W.-M. & Lin, F. (2006). *Acta Cryst.* **E66**, o1744.
 Han, K. J. & Kay, K. Y. (2005). *J. Korean Chem. Soc.* **49**, 233–238.
 Rigaku (2005). *CrystalClear*. Rigaku Corporation, Tokyo, Japan.
 Sheldrick, G. M. (2008). *Acta Cryst.* **A64**, 112–122.
 Valkonen, A., Lahtinen, T. & Rissanen, K. (2007). *Acta Cryst.* **E63**, o472–o473.
 Xu, D., Shi, Y.-Q., Chen, B., Cheng, Y.-H. & Gao, X. (2006). *Acta Cryst.* **E62**, o408–o409.

supporting information

Acta Cryst. (2010). E66, o1859 [doi:10.1107/S1600536810024177]

N-(2,3,4-Trifluorophenyl)phthalimide

Xian-Shu Fu, Xiao-Ping Yu, Wei-Min Wang and Fang Lin

S1. Comment

The title compound is a key intermediate in the synthesis of organic electro-luminescent materials. The emission of light by organic molecules exposed to an electric field has been wide investigated in both an academic and industrial context. (Han & Kay, 2005).

The molecular structure of the title compound is illustrated in Fig. 1. In the title compound, two rings are nearly planar, but the molecule as a whole is not planar. The dihedral angle between the benzene ring and the phthalimide plane is $60.12(7)^\circ$, which is similar to $59.95(4)^\circ$ found in a related compound *N*-(2-fluorophenyl)phthalimide (Xu *et al.* 2006). Weak intermolecular C—H \cdots O and C—H \cdots F hydrogen bonding are present in the crystal structure (Table 1).

S2. Experimental

An acetic acid solution of phthalic anhydride (14.8 g, 100 mmol) and 2,3,4-trifluoroaniline (10.55 ml, 100 mmol) was refluxed overnight, and then filtered. The crude product was recrystallized from ethyl acetate.

S3. Refinement

H atoms were positioned geometrically and refined as riding with C—H = 0.95 Å, and $U_{\text{iso}}(\text{H}) = 1.2U_{\text{eq}}(\text{C})$.

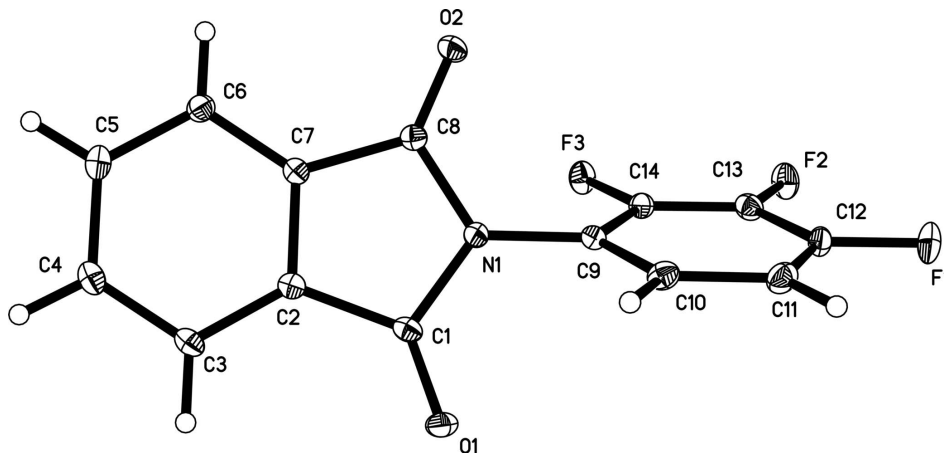


Figure 1

View of the molecule of showing the atom-labelling scheme. Displacement ellipsoids are drawn at the 30% probability level.

N*-(2,3,4-Trifluorophenyl)phthalimideCrystal data*C₁₄H₆F₃NO₂ $M_r = 277.20$ Monoclinic, $P2_1/n$

Hall symbol: -P 2yn

 $a = 6.8422$ (14) Å $b = 21.082$ (4) Å $c = 7.9727$ (16) Å $\beta = 101.98$ (3)° $V = 1125.0$ (4) Å³ $Z = 4$ $F(000) = 560$ $D_x = 1.637$ Mg m⁻³Mo $K\alpha$ radiation, $\lambda = 0.71073$ Å

Cell parameters from 3644 reflections

 $\theta = 1.9$ – 27.8 ° $\mu = 0.14$ mm⁻¹ $T = 113$ K

Prism, colorless

 $0.20 \times 0.18 \times 0.12$ mm*Data collection*Rigaku Saturn CCD area-detector
diffractometer

Radiation source: rotating anode

Confocal monochromator

Detector resolution: 7.31 pixels mm⁻¹ ω and φ scans

Absorption correction: multi-scan

(CrystalClear; Rigaku, 2005)

 $T_{\min} = 0.972$, $T_{\max} = 0.983$

8049 measured reflections

1980 independent reflections

1603 reflections with $I > 2\sigma(I)$ $R_{\text{int}} = 0.034$ $\theta_{\max} = 25.0$ °, $\theta_{\min} = 1.9$ ° $h = -8 \rightarrow 8$ $k = -24 \rightarrow 25$ $l = -7 \rightarrow 9$ *Refinement*Refinement on F^2

Least-squares matrix: full

 $R[F^2 > 2\sigma(F^2)] = 0.034$ $wR(F^2) = 0.094$ $S = 1.03$

1980 reflections

182 parameters

0 restraints

Primary atom site location: structure-invariant
direct methodsSecondary atom site location: difference Fourier
mapHydrogen site location: inferred from
neighbouring sites

H-atom parameters constrained

 $w = 1/[\sigma^2(F_o^2) + (0.0663P)^2]$ where $P = (F_o^2 + 2F_c^2)/3$ $(\Delta/\sigma)_{\max} = 0.002$ $\Delta\rho_{\max} = 0.34$ e Å⁻³ $\Delta\rho_{\min} = -0.21$ e Å⁻³Extinction correction: *SHELXL97* (Sheldrick,
2008), $F_c^* = kFc[1 + 0.001xFc^2\lambda^3/\sin(2\theta)]^{-1/4}$

Extinction coefficient: 0.097 (6)

Special details

Geometry. All e.s.d.'s (except the e.s.d. in the dihedral angle between two l.s. planes) are estimated using the full covariance matrix. The cell e.s.d.'s are taken into account individually in the estimation of e.s.d.'s in distances, angles and torsion angles; correlations between e.s.d.'s in cell parameters are only used when they are defined by crystal symmetry. An approximate (isotropic) treatment of cell e.s.d.'s is used for estimating e.s.d.'s involving l.s. planes.

Refinement. Refinement of F^2 against ALL reflections. The weighted R -factor wR and goodness of fit S are based on F^2 , conventional R -factors R are based on F , with F set to zero for negative F^2 . The threshold expression of $F^2 > \sigma(F^2)$ is used only for calculating R -factors(gt) *etc.* and is not relevant to the choice of reflections for refinement. R -factors based on F^2 are statistically about twice as large as those based on F , and R -factors based on ALL data will be even larger.

Fractional atomic coordinates and isotropic or equivalent isotropic displacement parameters (Å²)

	x	y	z	$U_{\text{iso}}^*/U_{\text{eq}}$
F1	0.36805 (13)	0.27803 (5)	1.30697 (12)	0.0324 (3)
F2	0.04277 (12)	0.20200 (5)	1.25161 (11)	0.0286 (3)

F3	0.00346 (11)	0.10870 (4)	1.01757 (10)	0.0245 (3)
O1	0.29321 (15)	0.14544 (5)	0.58108 (12)	0.0246 (3)
O2	0.28164 (15)	0.00092 (5)	1.01024 (12)	0.0228 (3)
N1	0.28999 (17)	0.08556 (6)	0.82561 (14)	0.0181 (3)
C1	0.28328 (19)	0.09456 (7)	0.64828 (17)	0.0176 (3)
C2	0.26306 (18)	0.02990 (7)	0.57338 (17)	0.0162 (3)
C3	0.2489 (2)	0.01067 (7)	0.40531 (18)	0.0193 (4)
H3	0.2475	0.0406	0.3160	0.023*
C4	0.23668 (19)	-0.05431 (8)	0.37222 (18)	0.0214 (4)
H4	0.2272	-0.0690	0.2582	0.026*
C5	0.2381 (2)	-0.09816 (8)	0.50331 (18)	0.0231 (4)
H5	0.2302	-0.1422	0.4771	0.028*
C6	0.2507 (2)	-0.07859 (7)	0.67177 (18)	0.0200 (3)
H6	0.2510	-0.1083	0.7613	0.024*
C7	0.26293 (18)	-0.01410 (7)	0.70366 (16)	0.0161 (3)
C8	0.27847 (19)	0.02073 (7)	0.86743 (17)	0.0168 (3)
C9	0.31396 (19)	0.13524 (7)	0.94859 (17)	0.0175 (3)
C10	0.4794 (2)	0.17526 (7)	0.97522 (18)	0.0216 (4)
H10	0.5796	0.1693	0.9102	0.026*
C11	0.4998 (2)	0.22367 (8)	1.09549 (19)	0.0240 (4)
H11	0.6125	0.2510	1.1129	0.029*
C12	0.3538 (2)	0.23125 (7)	1.18896 (18)	0.0225 (4)
C13	0.1879 (2)	0.19236 (8)	1.16429 (18)	0.0207 (4)
C14	0.16934 (19)	0.14500 (7)	1.04425 (17)	0.0181 (3)

Atomic displacement parameters (Å²)

	U^{11}	U^{22}	U^{33}	U^{12}	U^{13}	U^{23}
F1	0.0371 (5)	0.0252 (6)	0.0336 (5)	-0.0042 (4)	0.0044 (4)	-0.0152 (4)
F2	0.0289 (5)	0.0319 (6)	0.0280 (5)	0.0003 (4)	0.0132 (4)	-0.0096 (4)
F3	0.0213 (5)	0.0273 (6)	0.0262 (5)	-0.0077 (4)	0.0080 (3)	-0.0059 (4)
O1	0.0342 (6)	0.0189 (7)	0.0220 (6)	0.0039 (5)	0.0086 (4)	0.0058 (4)
O2	0.0300 (6)	0.0236 (7)	0.0159 (5)	-0.0026 (4)	0.0072 (4)	0.0024 (4)
N1	0.0239 (6)	0.0158 (7)	0.0156 (6)	-0.0014 (5)	0.0062 (5)	-0.0003 (5)
C1	0.0159 (7)	0.0224 (9)	0.0150 (7)	0.0029 (6)	0.0044 (6)	0.0032 (6)
C2	0.0126 (6)	0.0191 (9)	0.0172 (7)	0.0018 (6)	0.0039 (5)	0.0014 (6)
C3	0.0164 (7)	0.0271 (10)	0.0145 (7)	0.0022 (6)	0.0030 (5)	0.0015 (6)
C4	0.0175 (7)	0.0288 (10)	0.0177 (7)	0.0014 (6)	0.0029 (6)	-0.0041 (6)
C5	0.0228 (8)	0.0215 (9)	0.0253 (8)	-0.0002 (6)	0.0053 (6)	-0.0065 (6)
C6	0.0210 (7)	0.0184 (9)	0.0209 (8)	0.0001 (6)	0.0047 (6)	0.0006 (6)
C7	0.0139 (7)	0.0190 (9)	0.0157 (7)	0.0007 (6)	0.0035 (5)	-0.0001 (5)
C8	0.0157 (7)	0.0179 (9)	0.0176 (7)	0.0003 (6)	0.0051 (5)	0.0010 (6)
C9	0.0216 (7)	0.0165 (9)	0.0141 (7)	0.0006 (6)	0.0027 (6)	0.0007 (6)
C10	0.0222 (7)	0.0198 (9)	0.0242 (8)	-0.0010 (6)	0.0076 (6)	0.0027 (6)
C11	0.0229 (8)	0.0199 (9)	0.0280 (8)	-0.0045 (6)	0.0025 (6)	0.0012 (6)
C12	0.0285 (8)	0.0165 (9)	0.0200 (7)	0.0011 (6)	-0.0003 (6)	-0.0041 (6)
C13	0.0215 (7)	0.0233 (9)	0.0181 (7)	0.0027 (6)	0.0058 (6)	0.0008 (6)
C14	0.0172 (7)	0.0180 (9)	0.0179 (7)	-0.0029 (6)	0.0011 (6)	0.0005 (6)

Geometric parameters (Å, °)

F1—C12	1.3525 (17)	C4—H4	0.9500
F2—C13	1.3411 (17)	C5—C6	1.390 (2)
F3—C14	1.3486 (16)	C5—H5	0.9500
O1—C1	1.2072 (18)	C6—C7	1.382 (2)
O2—C8	1.2087 (16)	C6—H6	0.9500
N1—C8	1.4129 (19)	C7—C8	1.4824 (19)
N1—C1	1.4178 (17)	C9—C14	1.384 (2)
N1—C9	1.4207 (18)	C9—C10	1.392 (2)
C1—C2	1.483 (2)	C10—C11	1.387 (2)
C2—C3	1.3840 (19)	C10—H10	0.9500
C2—C7	1.3927 (19)	C11—C12	1.374 (2)
C3—C4	1.394 (2)	C11—H11	0.9500
C3—H3	0.9500	C12—C13	1.381 (2)
C4—C5	1.394 (2)	C13—C14	1.371 (2)
C8—N1—C1	111.90 (11)	C2—C7—C8	108.41 (13)
C8—N1—C9	123.66 (11)	O2—C8—N1	124.44 (13)
C1—N1—C9	124.39 (12)	O2—C8—C7	129.98 (14)
O1—C1—N1	124.63 (13)	N1—C8—C7	105.58 (11)
O1—C1—C2	130.33 (13)	C14—C9—C10	118.52 (13)
N1—C1—C2	105.04 (12)	C14—C9—N1	119.76 (12)
C3—C2—C7	121.07 (14)	C10—C9—N1	121.72 (12)
C3—C2—C1	129.87 (13)	C11—C10—C9	120.87 (13)
C7—C2—C1	109.05 (12)	C11—C10—H10	119.6
C2—C3—C4	117.42 (13)	C9—C10—H10	119.6
C2—C3—H3	121.3	C12—C11—C10	118.70 (14)
C4—C3—H3	121.3	C12—C11—H11	120.7
C5—C4—C3	121.26 (14)	C10—C11—H11	120.7
C5—C4—H4	119.4	F1—C12—C11	120.43 (13)
C3—C4—H4	119.4	F1—C12—C13	118.06 (13)
C6—C5—C4	121.12 (15)	C11—C12—C13	121.50 (14)
C6—C5—H5	119.5	F2—C13—C14	120.11 (13)
C4—C5—H5	119.5	F2—C13—C12	120.76 (13)
C7—C6—C5	117.30 (14)	C14—C13—C12	119.08 (13)
C7—C6—H6	121.3	F3—C14—C13	118.45 (12)
C5—C6—H6	121.3	F3—C14—C9	120.21 (12)
C6—C7—C2	121.82 (13)	C13—C14—C9	121.32 (13)
C6—C7—C8	129.77 (13)		
C8—N1—C1—O1	-179.01 (13)	C2—C7—C8—O2	179.32 (13)
C9—N1—C1—O1	-1.5 (2)	C6—C7—C8—N1	178.93 (13)
C8—N1—C1—C2	0.83 (14)	C2—C7—C8—N1	-0.75 (14)
C9—N1—C1—C2	178.32 (11)	C8—N1—C9—C14	-61.69 (18)
O1—C1—C2—C3	-0.5 (2)	C1—N1—C9—C14	121.12 (15)
N1—C1—C2—C3	179.72 (13)	C8—N1—C9—C10	118.90 (15)
O1—C1—C2—C7	178.52 (14)	C1—N1—C9—C10	-58.29 (18)

N1—C1—C2—C7	-1.30 (14)	C14—C9—C10—C11	0.3 (2)
C7—C2—C3—C4	-0.67 (19)	N1—C9—C10—C11	179.76 (13)
C1—C2—C3—C4	178.21 (12)	C9—C10—C11—C12	0.3 (2)
C2—C3—C4—C5	0.2 (2)	C10—C11—C12—F1	-179.77 (13)
C3—C4—C5—C6	0.3 (2)	C10—C11—C12—C13	-0.7 (2)
C4—C5—C6—C7	-0.34 (19)	F1—C12—C13—F2	1.9 (2)
C5—C6—C7—C2	-0.13 (19)	C11—C12—C13—F2	-177.27 (13)
C5—C6—C7—C8	-179.77 (13)	F1—C12—C13—C14	179.41 (13)
C3—C2—C7—C6	0.7 (2)	C11—C12—C13—C14	0.3 (2)
C1—C2—C7—C6	-178.43 (12)	F2—C13—C14—F3	-0.3 (2)
C3—C2—C7—C8	-179.64 (11)	C12—C13—C14—F3	-177.88 (12)
C1—C2—C7—C8	1.28 (14)	F2—C13—C14—C9	178.01 (12)
C1—N1—C8—O2	179.85 (12)	C12—C13—C14—C9	0.4 (2)
C9—N1—C8—O2	2.3 (2)	C10—C9—C14—F3	177.54 (12)
C1—N1—C8—C7	-0.09 (14)	N1—C9—C14—F3	-1.9 (2)
C9—N1—C8—C7	-177.60 (11)	C10—C9—C14—C13	-0.7 (2)
C6—C7—C8—O2	-1.0 (2)	N1—C9—C14—C13	179.83 (13)

Hydrogen-bond geometry (Å, °)

<i>D</i> —H \cdots <i>A</i>	<i>D</i> —H	H \cdots <i>A</i>	<i>D</i> \cdots <i>A</i>	<i>D</i> —H \cdots <i>A</i>
C4—H4 \cdots O2 ⁱ	0.95	2.55	3.1855 (18)	124
C10—H10 \cdots F1 ⁱⁱ	0.95	2.54	3.3647 (18)	145
C11—H11 \cdots O1 ⁱⁱⁱ	0.95	2.55	3.428 (2)	154

Symmetry codes: (i) *x*, *y*, *z*-1; (ii) *x*+1/2, -*y*+1/2, *z*-1/2; (iii) *x*+1/2, -*y*+1/2, *z*+1/2.