

Acta Crystallographica Section E

Structure Reports

Online

ISSN 1600-5368

**(*E,E*)-3,3'-Dimethyl-1,1'-diphenyl-4,4'-
{(ethane-1,2-diylidimino)bis[(2-furyl)-
methylidene]}di-1*H*-pyrazol-5(4*H*)-one**

Hai-Wen Wang

East China University of Science and Technology, College of Chemistry and Molecular Engineering, Mei Long Road 130, Shanghai 200237, People's Republic of China

Correspondence e-mail: wanghaiwen@ecust.edu.cn

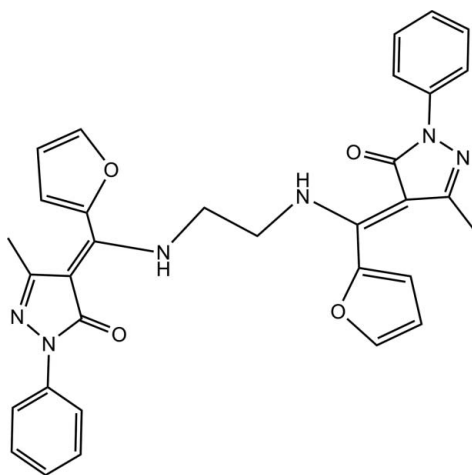
Received 23 May 2010; accepted 26 May 2010

Key indicators: single-crystal X-ray study; $T = 295$ K; mean $\sigma(\text{C}-\text{C}) = 0.003$ Å; R factor = 0.046; wR factor = 0.133; data-to-parameter ratio = 16.1.

The complete molecule of the title compound of the title compound, $\text{C}_{32}\text{H}_{28}\text{N}_6\text{O}_4$, is generated by crystallographic inversion symmetry. The dihedral angles between the pyrazalone ring and the pendant phenyl and furan rings are 15.65 (8) and 65.06 (8)°, respectively. In the crystal, the molecules are linked by $\text{N}-\text{H}\cdots\text{O}$, $\text{C}-\text{H}\cdots\text{O}$ and weak $\text{C}-\text{H}\cdots\pi$ interactions.

Related literature

For general background to pyrazolones, see: Casas *et al.* (2007); Jensen (1959); Li *et al.* (2000); Zhang *et al.* (2007, 2008).



Experimental

Crystal data

$\text{C}_{32}\text{H}_{28}\text{N}_6\text{O}_4$
 $M_r = 560.60$
Monoclinic, $P2_1/c$
 $a = 10.7438$ (6) Å
 $b = 7.6999$ (4) Å
 $c = 16.8273$ (9) Å
 $\beta = 93.937$ (1)°

$V = 1388.77$ (13) Å³
 $Z = 2$
Mo $K\alpha$ radiation
 $\mu = 0.09$ mm⁻¹
 $T = 295$ K
 $0.22 \times 0.20 \times 0.20$ mm

Data collection

Bruker APEXII CCD area-detector diffractometer
8081 measured reflections

3145 independent reflections
1934 reflections with $I > 2\sigma(I)$
 $R_{\text{int}} = 0.026$

Refinement

$R[F^2 > 2\sigma(F^2)] = 0.046$
 $wR(F^2) = 0.133$
 $S = 1.02$
3145 reflections
195 parameters

H atoms treated by a mixture of independent and constrained refinement
 $\Delta\rho_{\text{max}} = 0.16$ e Å⁻³
 $\Delta\rho_{\text{min}} = -0.21$ e Å⁻³

Table 1

Hydrogen-bond geometry (Å, °).

Cg3 is the centroid of the C1–C6 ring.

$D-\text{H}\cdots A$	$D-\text{H}$	$\text{H}\cdots A$	$D\cdots A$	$D-\text{H}\cdots A$
$\text{N3}-\text{H3A}\cdots\text{O1}$	0.92 (2)	1.91 (2)	2.693 (2)	142.0 (17)
$\text{C16}-\text{H16A}\cdots\text{Cg3}^{\text{i}}$	0.97	2.70	3.575 (2)	151
$\text{C3}-\text{H3}\cdots\text{O1}^{\text{ii}}$	0.93	2.54	3.389 (2)	152

Symmetry codes: (i) $-x, -y, -z + 1$; (ii) $-x + 2, y + \frac{1}{2}, -z + \frac{1}{2}$.

Data collection: APEX2 (Bruker, 2005); cell refinement: SAINT (Bruker, 2005); data reduction: SAINT; program(s) used to solve structure: SHELXS97 (Sheldrick, 2008); program(s) used to refine structure: SHELXL97 (Sheldrick, 2008); molecular graphics: SHELXTL (Sheldrick, 2008); software used to prepare material for publication: SHELXL97.

This work was supported by the College of Chemistry and Molecular Engineering, East China University of Science and Technology.

Supplementary data and figures for this paper are available from the IUCr electronic archives (Reference: ZQ2042).

References

- Bruker (2005). APEX2 and SAINT. Bruker AXS Inc., Madison, Wisconsin, USA.
Casas, J. S., García-Tasende, M. S., Sanchez, A., Sordo, J. & Touceda, Á. (2007). *Coord. Chem. Rev.* **251**, 1561–1589.
Jensen, B. S. (1959). *Acta Chem. Scand.* **13**, 1668–1670.
Li, J.-Z., Li, G. & Yu, W.-J. (2000). *J. Rare Earth*, **18**, 233–236.
Sheldrick, G. M. (2008). *Acta Cryst.* **A64**, 112–122.
Zhang, H.-Q., Li, J.-Z., Zhang, Y., Zhang, D. & Su, Z.-H. (2007). *Acta Cryst.* **E63**, o3536.
Zhang, H.-Q., Li, J.-Z., Zhang, Y. & Zhang, D. (2008). *Chin. Inorg. Chem.* **24**, 990–993.

supporting information

Acta Cryst. (2010). E66, o1534 [doi:10.1107/S160053681001980X]

(*E,E*)-3,3'-Dimethyl-1,1'-diphenyl-4,4'-{(ethane-1,2-diyl-diimino)bis[(2-furyl)methylidene]}di-1*H*-pyrazol-5(4*H*)-one

Hai-Wen Wang

S1. Comment

Pyrazolones form a very important class of heterocycles due to their properties and applications (Casas *et al.*, 2007). Schiffbases derived from 1-phenyl-3-methyl-4-(2-furoyl)-5-pyrazolone (PMFP) have found extensive application in coordination chemistry and in antibacterial activation (Zhang *et al.*, 2007, 2008; Li *et al.*, 2000). In order to expand this field, a novel bis-schiff base has been synthesized and its crystal structure is reported herein for the first time.

The molecular structure of the title compound (I) is shown in Fig.1. The molecule adopts a staggered conformation about the C9—C9ⁱ bond (symmetry code: (i) $-x, y + 1/2, -z + 1/2$) due to the centrosymmetry. Atoms O1, C7, C8 and C11 of the PMFP moiety and N3 of the ethylenediamine group are almost coplanar, the largest deviation being 0.063 (11) Å for atom C11. The phenyl and furan rings are slightly twisted with respect to the central pyrazolone ring making dihedral angles of 15.65 (8)° and 65.06 (8)°, respectively, indicating a high degree of conjugation and electron delocalization.

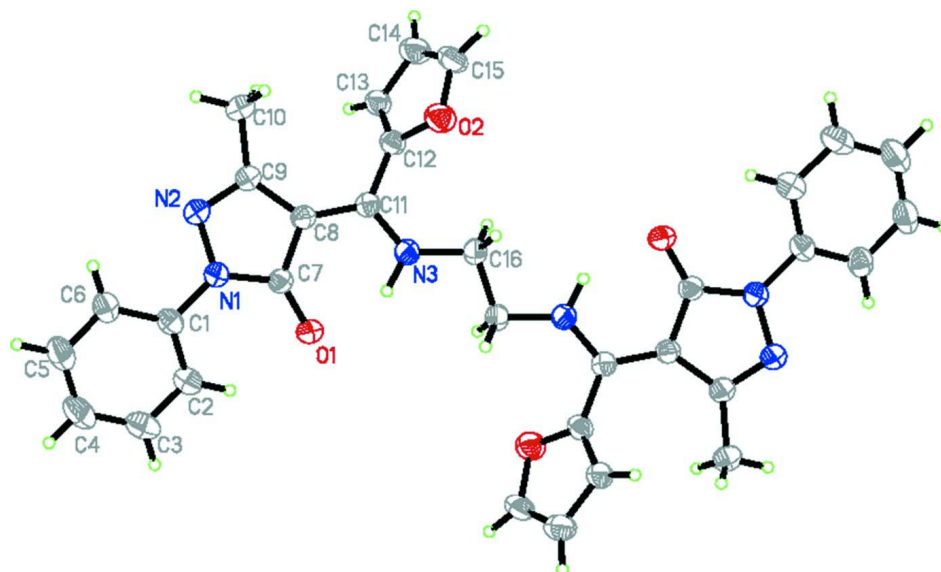
The cohesion of the crystal is assured by a strong intramolecular hydrogen bond N3—H3A···O1 (Table 1). Three weak hydrogen bonds C2—H2···O1, C3—H3···O1 and C16—16 A···Cg(3) (Cg(3) denotes the C1—C6 ring centroid) also contribute to the stabilization of the crystal structure.

S2. Experimental

All reagents were obtained from commercial sources and used without further purification. PMFP was synthesized according to the method proposed by Jensen (Jensen, 1959). Ethylenediamine 1.0 mmol (0.067 ml) was added dropwise to a stirred solution of PMFP 2.0 mmol (0.5365 g) in anhydrous ethanol (25 ml) at ambient temperature. After refluxing for 6 h, the solvent was removed and a pure yellowish product was obtained upon recrystallization from EtOH/n-heptane (V/V = 1) in 78% yield. mp: 181–182°C.

S3. Refinement

The H atom bonded to N3 was located in a difference map and refined freely. Other H atoms were placed in calculated positions, with C—H = 0.93 for phenyl, 0.96 for methyl and 0.97 Å for methylene H atoms, and refined as riding, with $U_{\text{iso}}(\text{H}) = 1.2U_{\text{eq}}(\text{C})$ for phenyl and methylene H, and $1.5U_{\text{eq}}(\text{C})$ for methyl H atoms.

**Figure 1**

The molecular structure of (I) (thermal ellipsoids are shown at the 30% probability level). Symmetry code: (i) $-x, y+1/2, -z+1/2$.

(*E,E*)-3,3'-Dimethyl-1,1'-diphenyl-4,4'-{(ethane-1,2-diylidimino)bis[(2-furyl)methylidene]}di-1*H*-pyrazol-5(4*H*)-one

Crystal data

$C_{32}H_{28}N_6O_4$
 $M_r = 560.60$
 Monoclinic, $P2_1/c$
 Hall symbol: $-P\ 2_1/c$
 $a = 10.7438\ (6)\ \text{\AA}$
 $b = 7.6999\ (4)\ \text{\AA}$
 $c = 16.8273\ (9)\ \text{\AA}$
 $\beta = 93.937\ (1)^\circ$
 $V = 1388.77\ (13)\ \text{\AA}^3$
 $Z = 2$

$F(000) = 588$
 $D_x = 1.341\ \text{Mg m}^{-3}$
 Mo $K\alpha$ radiation, $\lambda = 0.71073\ \text{\AA}$
 Cell parameters from 1740 reflections
 $\theta = 2.4\text{--}22.9^\circ$
 $\mu = 0.09\ \text{mm}^{-1}$
 $T = 295\ \text{K}$
 Block, yellow
 $0.22 \times 0.20 \times 0.20\ \text{mm}$

Data collection

Bruker APEXII CCD area-detector
 diffractometer
 Radiation source: fine-focus sealed tube
 Graphite monochromator
 phi and ω scans
 8081 measured reflections
 3145 independent reflections

1934 reflections with $I > 2\sigma(I)$
 $R_{\text{int}} = 0.026$
 $\theta_{\text{max}} = 27.5^\circ, \theta_{\text{min}} = 1.9^\circ$
 $h = -12 \rightarrow 13$
 $k = -10 \rightarrow 6$
 $l = -21 \rightarrow 21$

Refinement

Refinement on F^2
 Least-squares matrix: full
 $R[F^2 > 2\sigma(F^2)] = 0.046$
 $wR(F^2) = 0.133$
 $S = 1.02$
 3145 reflections

195 parameters
 0 restraints
 Primary atom site location: structure-invariant
 direct methods
 Secondary atom site location: difference Fourier
 map

Hydrogen site location: inferred from neighbouring sites
 H atoms treated by a mixture of independent and constrained refinement

$$w = 1/[\sigma^2(F_o^2) + (0.0585P)^2 + 0.2282P]$$

where $P = (F_o^2 + 2F_c^2)/3$

$$(\Delta/\sigma)_{\max} < 0.001$$

$$\Delta\rho_{\max} = 0.16 \text{ e } \text{\AA}^{-3}$$

$$\Delta\rho_{\min} = -0.21 \text{ e } \text{\AA}^{-3}$$

Special details

Geometry. All e.s.d.'s (except the e.s.d. in the dihedral angle between two l.s. planes) are estimated using the full covariance matrix. The cell e.s.d.'s are taken into account individually in the estimation of e.s.d.'s in distances, angles and torsion angles; correlations between e.s.d.'s in cell parameters are only used when they are defined by crystal symmetry. An approximate (isotropic) treatment of cell e.s.d.'s is used for estimating e.s.d.'s involving l.s. planes.

Refinement. Refinement of F^2 against ALL reflections. The weighted R -factor wR and goodness of fit S are based on F^2 , conventional R -factors R are based on F , with F set to zero for negative F^2 . The threshold expression of $F^2 > \sigma(F^2)$ is used only for calculating R -factors(gt) *etc.* and is not relevant to the choice of reflections for refinement. R -factors based on F^2 are statistically about twice as large as those based on F , and R -factors based on ALL data will be even larger.

Fractional atomic coordinates and isotropic or equivalent isotropic displacement parameters (\AA^2)

	<i>x</i>	<i>y</i>	<i>z</i>	$U_{\text{iso}}^*/U_{\text{eq}}$
C1	0.79340 (17)	1.2879 (2)	0.11911 (11)	0.0503 (4)
C2	0.86997 (19)	1.2531 (3)	0.18661 (11)	0.0628 (5)
H2	0.9052	1.1435	0.1942	0.075*
C3	0.8939 (2)	1.3819 (4)	0.24275 (14)	0.0784 (7)
H3	0.9448	1.3584	0.2884	0.094*
C4	0.8430 (2)	1.5442 (4)	0.23149 (16)	0.0832 (8)
H4	0.8600	1.6308	0.2692	0.100*
C5	0.7671 (2)	1.5788 (3)	0.16450 (15)	0.0755 (7)
H5	0.7329	1.6890	0.1570	0.091*
C6	0.74101 (18)	1.4516 (3)	0.10811 (13)	0.0598 (5)
H6	0.6887	1.4753	0.0631	0.072*
C7	0.83098 (17)	1.0057 (2)	0.04804 (11)	0.0494 (4)
C8	0.76317 (16)	0.9266 (2)	-0.01917 (10)	0.0477 (4)
C9	0.66731 (17)	1.0489 (3)	-0.04361 (11)	0.0529 (5)
C10	0.5737 (2)	1.0478 (3)	-0.11395 (13)	0.0757 (7)
H10A	0.5098	0.9640	-0.1054	0.114*
H10B	0.6145	1.0178	-0.1610	0.114*
H10C	0.5369	1.1610	-0.1204	0.114*
C11	0.79841 (15)	0.7652 (2)	-0.04839 (10)	0.0453 (4)
C12	0.71716 (18)	0.6668 (2)	-0.10479 (10)	0.0510 (5)
C13	0.59548 (17)	0.6410 (3)	-0.10780 (11)	0.0566 (5)
H13	0.5408	0.6837	-0.0720	0.068*
C14	0.5636 (2)	0.5375 (3)	-0.17468 (13)	0.0728 (6)
H14	0.4841	0.4988	-0.1915	0.087*
C15	0.6675 (2)	0.5054 (3)	-0.20900 (13)	0.0743 (6)
H15	0.6733	0.4402	-0.2551	0.089*
C16	0.95252 (16)	0.5224 (2)	-0.03384 (11)	0.0498 (5)
H16A	0.9908	0.5153	-0.0843	0.060*
H16B	0.8836	0.4408	-0.0350	0.060*
H3A	0.9502 (18)	0.768 (3)	0.0148 (12)	0.072 (6)*

N1	0.76746 (14)	1.1578 (2)	0.06110 (8)	0.0525 (4)
N2	0.67014 (15)	1.1852 (2)	0.00285 (9)	0.0586 (4)
N3	0.90719 (14)	0.6974 (2)	-0.02175 (10)	0.0523 (4)
O1	0.92691 (12)	0.95452 (17)	0.08686 (8)	0.0615 (4)
O2	0.76644 (13)	0.5832 (2)	-0.16638 (8)	0.0703 (4)

Atomic displacement parameters (Å²)

	U^{11}	U^{22}	U^{33}	U^{12}	U^{13}	U^{23}
C1	0.0526 (10)	0.0503 (11)	0.0489 (10)	-0.0084 (9)	0.0096 (8)	-0.0029 (9)
C2	0.0687 (13)	0.0644 (13)	0.0550 (11)	-0.0098 (11)	0.0030 (10)	-0.0045 (10)
C3	0.0795 (15)	0.0934 (19)	0.0622 (14)	-0.0174 (14)	0.0041 (11)	-0.0200 (13)
C4	0.0753 (15)	0.0879 (19)	0.0887 (18)	-0.0172 (14)	0.0219 (14)	-0.0418 (15)
C5	0.0656 (13)	0.0618 (14)	0.1014 (18)	-0.0080 (11)	0.0215 (13)	-0.0244 (13)
C6	0.0572 (11)	0.0562 (12)	0.0673 (12)	-0.0035 (10)	0.0143 (10)	-0.0061 (10)
C7	0.0528 (10)	0.0465 (10)	0.0481 (10)	0.0005 (9)	-0.0017 (8)	0.0039 (8)
C8	0.0505 (10)	0.0465 (10)	0.0452 (9)	0.0000 (8)	-0.0029 (8)	0.0006 (8)
C9	0.0550 (11)	0.0534 (11)	0.0490 (10)	0.0044 (9)	-0.0051 (8)	0.0015 (9)
C10	0.0822 (15)	0.0761 (16)	0.0647 (13)	0.0176 (13)	-0.0249 (11)	-0.0040 (12)
C11	0.0472 (10)	0.0460 (10)	0.0426 (9)	-0.0017 (8)	0.0022 (8)	0.0051 (8)
C12	0.0622 (12)	0.0480 (10)	0.0425 (9)	-0.0011 (9)	0.0002 (8)	-0.0025 (8)
C13	0.0475 (10)	0.0667 (13)	0.0559 (11)	0.0026 (9)	0.0049 (8)	-0.0122 (10)
C14	0.0565 (12)	0.0862 (17)	0.0741 (14)	-0.0062 (12)	-0.0086 (11)	-0.0161 (12)
C15	0.0718 (14)	0.0852 (16)	0.0641 (13)	-0.0018 (13)	-0.0076 (11)	-0.0288 (12)
C16	0.0482 (10)	0.0454 (10)	0.0561 (11)	-0.0007 (8)	0.0052 (8)	-0.0022 (8)
N1	0.0594 (9)	0.0474 (9)	0.0494 (9)	0.0036 (8)	-0.0063 (7)	-0.0026 (7)
N2	0.0625 (10)	0.0552 (10)	0.0564 (9)	0.0090 (8)	-0.0087 (8)	-0.0015 (8)
N3	0.0497 (9)	0.0426 (9)	0.0636 (10)	-0.0014 (7)	-0.0020 (8)	-0.0042 (8)
O1	0.0619 (8)	0.0561 (8)	0.0635 (8)	0.0046 (7)	-0.0177 (7)	-0.0037 (7)
O2	0.0630 (9)	0.0847 (11)	0.0632 (9)	0.0002 (8)	0.0047 (7)	-0.0147 (8)

Geometric parameters (Å, °)

C1—C2	1.382 (3)	C10—H10A	0.9600
C1—C6	1.387 (3)	C10—H10B	0.9600
C1—N1	1.413 (2)	C10—H10C	0.9600
C2—C3	1.382 (3)	C11—N3	1.330 (2)
C2—H2	0.9300	C11—C12	1.457 (2)
C3—C4	1.372 (4)	C12—C13	1.320 (2)
C3—H3	0.9300	C12—O2	1.358 (2)
C4—C5	1.371 (4)	C13—C14	1.402 (3)
C4—H4	0.9300	C13—H13	0.9300
C5—C6	1.379 (3)	C14—C15	1.315 (3)
C5—H5	0.9300	C14—H14	0.9300
C6—H6	0.9300	C15—O2	1.378 (2)
C7—O1	1.246 (2)	C15—H15	0.9300
C7—N1	1.380 (2)	C16—N3	1.452 (2)
C7—C8	1.438 (2)	C16—C16 ⁱ	1.516 (3)

C8—C11	1.398 (3)	C16—H16A	0.9700
C8—C9	1.435 (2)	C16—H16B	0.9700
C9—N2	1.307 (2)	N1—N2	1.399 (2)
C9—C10	1.500 (2)	N3—H3A	0.92 (2)
C2—C1—C6	119.95 (18)	H10A—C10—H10C	109.5
C2—C1—N1	120.52 (18)	H10B—C10—H10C	109.5
C6—C1—N1	119.54 (17)	N3—C11—C8	118.92 (16)
C3—C2—C1	119.7 (2)	N3—C11—C12	119.25 (17)
C3—C2—H2	120.2	C8—C11—C12	121.79 (16)
C1—C2—H2	120.2	C13—C12—O2	109.65 (16)
C4—C3—C2	120.4 (2)	C13—C12—C11	130.61 (17)
C4—C3—H3	119.8	O2—C12—C11	119.74 (16)
C2—C3—H3	119.8	C12—C13—C14	107.65 (18)
C5—C4—C3	119.9 (2)	C12—C13—H13	126.2
C5—C4—H4	120.0	C14—C13—H13	126.2
C3—C4—H4	120.0	C15—C14—C13	106.94 (18)
C4—C5—C6	120.6 (2)	C15—C14—H14	126.5
C4—C5—H5	119.7	C13—C14—H14	126.5
C6—C5—H5	119.7	C14—C15—O2	109.74 (18)
C5—C6—C1	119.5 (2)	C14—C15—H15	125.1
C5—C6—H6	120.3	O2—C15—H15	125.1
C1—C6—H6	120.3	N3—C16—C16 ⁱ	108.70 (18)
O1—C7—N1	125.83 (17)	N3—C16—H16A	109.9
O1—C7—C8	129.37 (17)	C16 ⁱ —C16—H16A	109.9
N1—C7—C8	104.79 (15)	N3—C16—H16B	109.9
C11—C8—C9	133.55 (16)	C16 ⁱ —C16—H16B	109.9
C11—C8—C7	121.23 (16)	H16A—C16—H16B	108.3
C9—C8—C7	105.20 (16)	C7—N1—N2	111.73 (14)
N2—C9—C8	111.62 (16)	C7—N1—C1	129.44 (15)
N2—C9—C10	117.60 (17)	N2—N1—C1	118.64 (15)
C8—C9—C10	130.68 (18)	C9—N2—N1	106.47 (15)
C9—C10—H10A	109.5	C11—N3—C16	127.80 (16)
C9—C10—H10B	109.5	C11—N3—H3A	112.4 (12)
H10A—C10—H10B	109.5	C16—N3—H3A	119.0 (13)
C9—C10—H10C	109.5	C12—O2—C15	106.01 (15)
C6—C1—C2—C3	-0.1 (3)	C8—C11—C12—O2	139.07 (18)
N1—C1—C2—C3	-179.80 (18)	O2—C12—C13—C14	-0.6 (2)
C1—C2—C3—C4	-0.6 (3)	C11—C12—C13—C14	179.5 (2)
C2—C3—C4—C5	0.6 (4)	C12—C13—C14—C15	0.0 (3)
C3—C4—C5—C6	0.1 (3)	C13—C14—C15—O2	0.6 (3)
C4—C5—C6—C1	-0.7 (3)	O1—C7—N1—N2	174.61 (17)
C2—C1—C6—C5	0.7 (3)	C8—C7—N1—N2	-4.5 (2)
N1—C1—C6—C5	-179.56 (17)	O1—C7—N1—C1	-0.1 (3)
O1—C7—C8—C11	3.0 (3)	C8—C7—N1—C1	-179.26 (17)
N1—C7—C8—C11	-177.92 (16)	C2—C1—N1—C7	-19.0 (3)
O1—C7—C8—C9	-175.32 (19)	C6—C1—N1—C7	161.30 (18)

N1—C7—C8—C9	3.75 (19)	C2—C1—N1—N2	166.60 (16)
C11—C8—C9—N2	-179.9 (2)	C6—C1—N1—N2	-13.1 (2)
C7—C8—C9—N2	-1.9 (2)	C8—C9—N2—N1	-0.8 (2)
C11—C8—C9—C10	-3.7 (4)	C10—C9—N2—N1	-177.56 (17)
C7—C8—C9—C10	174.3 (2)	C7—N1—N2—C9	3.4 (2)
C9—C8—C11—N3	167.09 (19)	C1—N1—N2—C9	178.82 (16)
C7—C8—C11—N3	-10.7 (3)	C8—C11—N3—C16	169.17 (17)
C9—C8—C11—C12	-15.3 (3)	C12—C11—N3—C16	-8.5 (3)
C7—C8—C11—C12	166.92 (16)	C16 ⁱ —C16—N3—C11	-154.74 (19)
N3—C11—C12—C13	136.6 (2)	C13—C12—O2—C15	0.9 (2)
C8—C11—C12—C13	-41.0 (3)	C11—C12—O2—C15	-179.14 (18)
N3—C11—C12—O2	-43.3 (2)	C14—C15—O2—C12	-0.9 (3)

Symmetry code: (i) $-x+2, -y+1, -z$.

Hydrogen-bond geometry (Å, °)

Cg3 is the centroid of the C1–c6 ring.

<i>D—H...A</i>	<i>D—H</i>	<i>H...A</i>	<i>D...A</i>	<i>D—H...A</i>
N3—H3A...O1	0.92 (2)	1.91 (2)	2.693 (2)	142.0 (17)
C16—H16A...Cg3 ⁱⁱ	0.97	2.70	3.575 (2)	151
C3—H3...O1 ⁱⁱⁱ	0.93	2.54	3.389 (2)	152

Symmetry codes: (ii) $-x, -y, -z+1$; (iii) $-x+2, y+1/2, -z+1/2$.