

Acta Crystallographica Section E

Structure Reports

Online

ISSN 1600-5368

2-[(2Z,3E)-2-Hydroxyimino-5-phenyl-2,3-dihydro-3-thienylidene]-2-phenylacetonitrile

Nazar Rad,^{a*} Yuri Teslenko,^a Mykola Obushak,^a
Volodymyr Pavlyuk^a and Bernard Marciniak^b

^aDepartment of Chemistry, Ivan Franko National University of Lviv, Kyryla i, Mefodia Str. 8, 79005 Lviv, Ukraine, and ^bInstitute of Chemistry and Environment Protection Jan Dlugosz University of Czestochowa, al. Armii Krajowej 13/15, 42-200 Czestochowa, Poland

Correspondence e-mail: rad_nazar@ukr.net

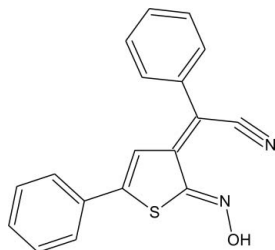
Received 8 May 2010; accepted 25 June 2010

Key indicators: single-crystal X-ray study; $T = 293$ K; mean $\sigma(\text{C}-\text{C}) = 0.002$ Å; R factor = 0.036; wR factor = 0.104; data-to-parameter ratio = 14.9.

In the crystal structure of the title compound, $\text{C}_{18}\text{H}_{12}\text{N}_2\text{OS}$, centrosymmetric dimers are stabilized both by van der Waals interactions and by two types of intermolecular $\text{O}-\text{H}\cdots\text{N}$ hydrogen bonds. In addition, an intramolecular $\text{C}-\text{H}\cdots\text{S}$ hydrogen bond is observed. The dihedral angles between the central ring and the two pendant phenyl rings are 7.4 (1) and 45.06 (9)°.

Related literature

For related heterocyclic compounds, see: Suwinsky *et al.* (2003). For a similar benzooxime, see: Davis *et al.* (1960). For applications of related reaction conditions, see: Davis & Pizzini (1960); Davis *et al.* (1961). For supramolecular chemistry based on oximes, see: Bertolasi *et al.* (1982); Chertanova *et al.* (1994). For the biological relevance of oximes and thiophene derivatives, see: Rappoport & Liebman (2008); Gronowitz (1963).



Experimental

Crystal data

 $\text{C}_{18}\text{H}_{12}\text{N}_2\text{OS}$ $M_r = 304.37$

Monoclinic, $P2_1/c$
 $a = 7.9826$ (5) Å
 $b = 21.3400$ (7) Å
 $c = 8.7253$ (5) Å
 $\beta = 90.471$ (7)°
 $V = 1486.29$ (14) Å³

$Z = 4$
Mo $K\alpha$ radiation
 $\mu = 0.22$ mm⁻¹
 $T = 293$ K
 $0.5 \times 0.3 \times 0.06$ mm

Data collection

Oxford Diffraction Xcalibur3 CCD diffractometer
Absorption correction: multi-scan (CrysAlis RED; Oxford Diffraction, 2008)
 $T_{\min} = 0.909$, $T_{\max} = 0.986$

9461 measured reflections
3024 independent reflections
2240 reflections with $I > 2\sigma(I)$
 $R_{\text{int}} = 0.022$

Refinement

$R[F^2 > 2\sigma(F^2)] = 0.036$
 $wR(F^2) = 0.104$
 $S = 1.04$
3024 reflections

203 parameters
H-atom parameters constrained
 $\Delta\rho_{\text{max}} = 0.21$ e Å⁻³
 $\Delta\rho_{\text{min}} = -0.23$ e Å⁻³

Table 1

Hydrogen-bond geometry (Å, °).

$D-H\cdots A$	$D-H$	$H\cdots A$	$D\cdots A$	$D-H\cdots A$
$\text{O1}-\text{H1A}\cdots\text{N1}^i$	0.82	2.16	2.900 (2)	150
$\text{O1}-\text{H1A}\cdots\text{N2}^i$	0.82	2.40	2.888 (2)	119
$\text{C1}-\text{H1}\cdots\text{S1}$	0.93	2.60	3.041 (2)	109

Symmetry code: (i) $-x + 1, -y + 1, -z$.

Data collection: CrysAlis CCD (Oxford Diffraction, 2008); cell refinement: CrysAlis CCD; data reduction: CrysAlis RED (Oxford Diffraction, 2008); program(s) used to solve structure: SHELXS97 (Sheldrick, 2008); program(s) used to refine structure: SHELXL97 (Sheldrick, 2008); molecular graphics: DIAMOND (Brandenburg, 2006); software used to prepare material for publication: SHELXL97 and publCIF (Westrip, 2010).

Supplementary data and figures for this paper are available from the IUCr electronic archives (Reference: IM2200).

References

- Bertolasi, V., Gilli, G. & Veronese, A. C. (1982). *Acta Cryst.* **B38**, 502–511.
Brandenburg, K. (2006). *DIAMOND*. Crystal Impact GbR, Bonn, Germany.
Chertanova, L., Pascard, C. & Sheremetev, A. (1994). *Acta Cryst.* **B50**, 708–716.
Davis, R. B. & Pizzini, L. C. (1960). *J. Org. Chem.* **25**, 1884–1888.
Davis, R. B., Pizzini, L. C. & Bara, E. J. (1961). *J. Org. Chem.* **26**, 4270–4274.
Davis, R. B., Pizzini, L. C. & Benigni, J. D. (1960). *J. Am. Chem. Soc.* **82**, 2913–2915.
Gronowitz, S. (1963). *Adv. Heterocycl. Chem.* **1**, 1–124.
Oxford Diffraction (2008). *CrysAlis CCD* and *CrysAlis RED*. Oxford Diffraction Ltd, Yarnton, England.
Rappoport, Z. & Liebman, J. F. (2008). Editors. *The Chemistry of Hydroxylamines, Oximes and Hydroxamic Acids*, pp. 609–651. Chichester: Wiley-VCH.
Sheldrick, G. M. (2008). *Acta Cryst.* **A64**, 112–122.
Suwiński, J., Świerczek, K., Wągner, P., Kubicki, M., Borowiak, T. & Słowikowska, J. (2003). *J. Heterocycl. Chem.* **40**, 523–528.
Westrip, S. P. (2010). *J. Appl. Cryst.* **43**. Submitted.

supporting information

Acta Cryst. (2010). E66, o1924 [https://doi.org/10.1107/S1600536810024955]

2-[(2Z,3E)-2-Hydroxyimino-5-phenyl-2,3-dihydro-3-thienylidene]-2-phenyl-acetonitrile

Nazar Rad, Yuri Teslenko, Mykola Obushak, Volodymyr Pavlyuk and Bernard Marciniak

S1. Comment

Oximes can act both as donors and acceptors for hydrogen bonds, making them interesting materials for supramolecular chemistry (Bertolasi *et al.*, 1982; Chertanova *et al.*, 1994). Besides, oximes are among the most useful and versatile intermediates in synthetic organic chemistry, the Beckmann rearrangement and the reduction of oximes being two of the most useful transformations. Oximes are also interesting due to their wide application in medicine, industry and analytical chemistry. Owing to the oxime bond oxime derivatives also possess therapeutic efficacy as a chemical tool for targeted intracellular delivery of synthetic oligonucleotides *via* conjugation to cell-penetrating peptides (Rappoport & Liebman, 2008). On the other hand, the discoveries of thiophene compounds in fungi and higher plants has awakened the interest of the natural product chemist in the chemistry of thiophenes (Gronowitz, 1963) Synthesis of thiophen-oximes resulted from our interest in the investigation of reactions between nitro-thiophene derivatives and arylacetonitriles. Due to containing oximic and nitrile moieties the title compound may be useful in prospective modifications. The molecule of the title compound is not planar: the phenyl moiety neighbouring to nitrile group is deviated from planarity by 45.06 (9)° and the second phenyl moiety is twisted by 7.4 (1)°. In the crystal structure solely the *anti*-isomer of the oxime is observed. The components of the structure are united into a three dimensional network by an extensive system of O—H···N intermolecular hydrogen bonds next to the intramolecular C(1)—H(1)···S(1) hydrogen bond. Adjacent molecules are linked into dimers by intermolecular O—H···N hydrogen bonds under participation of oximic groups. The distance between the nitrile nitrogen and oximic hydrogen atom of another molecule is 2.403 (2) Å. Dimers are further stacked in columns along the unique axis by π - π stacking interactions with centroid-centroid distances of 3.6 (1) Å.

S2. Experimental

To 40 ml of a methanolic solution of potassium hydroxide (3.36 g, 60 mmoles) phenylacetonitrile (1.17 ml, 10 mmol) was added with stirring. Then 10 ml of a methanolic solution of 2-iodo-5-nitrothiophene (2.55 g, 10 mmol) was added to the reaction mixture. The suspension was stirred at room temperature until precipitation of product was ended. The reaction mixture was then poured into 100 ml of water and acidified by adding acetic acid. The precipitate was isolated by filtration, washed with water and dried. Red (orange) needles of title compound, m.p. (with decomp.) 394–395 K, yield 2.12 g (60%), were obtained after slowly cooling down an ethanolic solution.

S3. Refinement

Positions of H atoms were calculated and refined using SHELXL constraints. All H atoms, including one bonded to O, were positioned geometrically with O—H = 0.82 Å and with C—H = 0.93 Å. Finally, thermal parameters of all hydrogen atoms were refined using an overall thermal isotropic parameter excluding the hydrogen atom of OH-group. Thermal parameter for hydrogen of OH-group was refined individually.

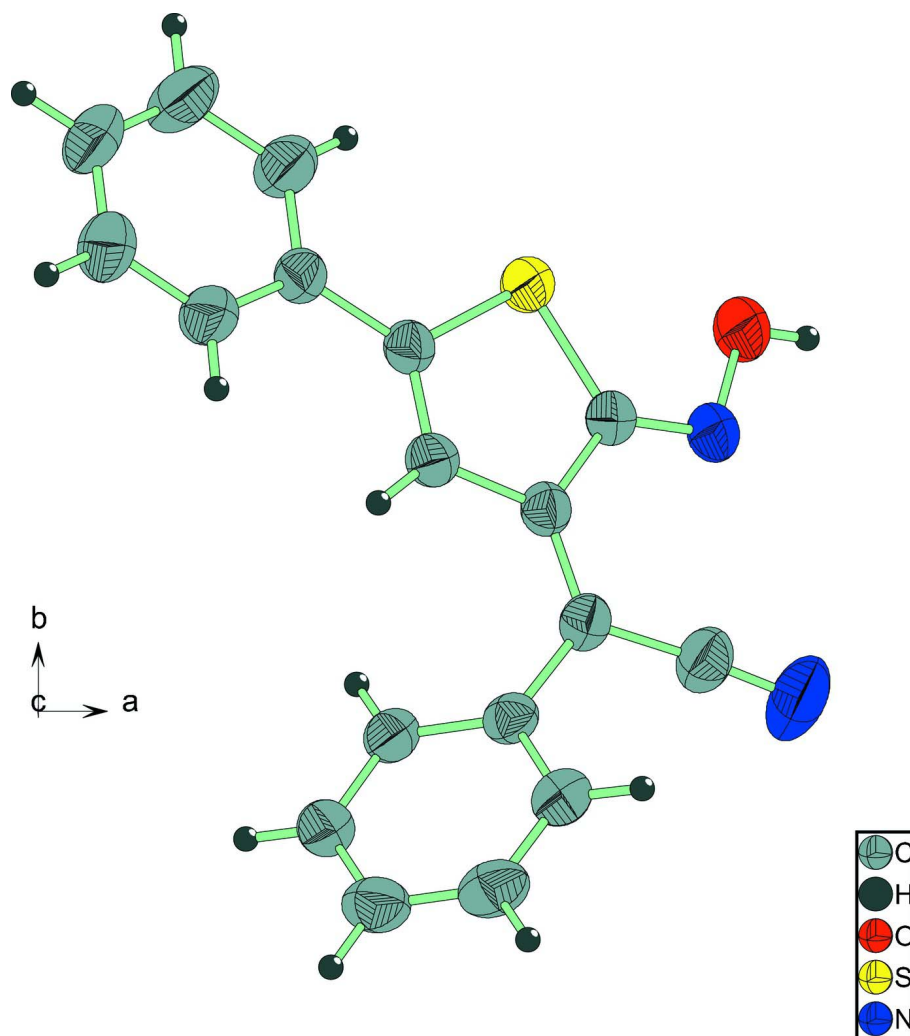


Figure 1

Molecular structure of the title compound, C₁₈H₁₂N₂OS. Thermal ellipsoids represent a 50% probability level.

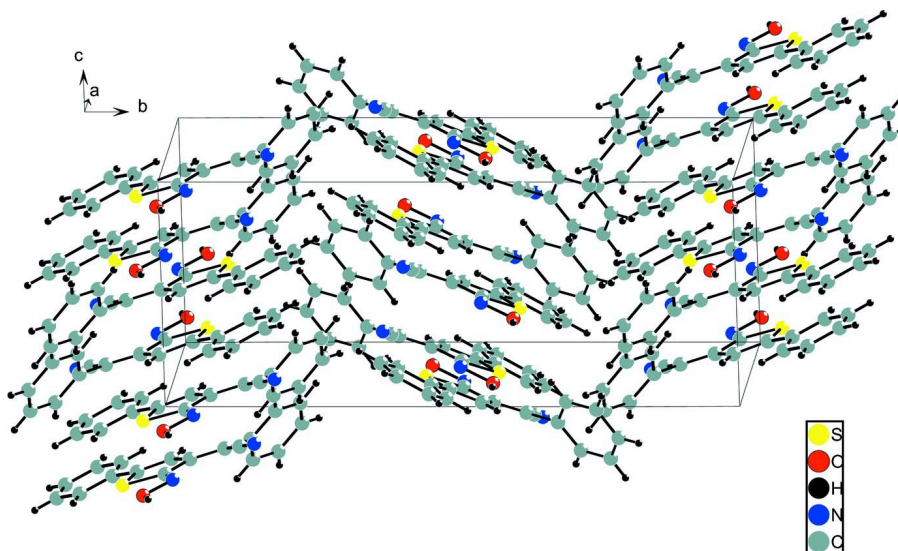


Figure 2

Crystal structure of the title compound.

2-[(2Z,3E)-2-Hydroxyimino-5-phenyl-2,3-dihydro-3- thienylidene]-2-phenylacetonitrile

Crystal data

$C_{18}H_{12}N_2OS$

$M_r = 304.37$

Monoclinic, $P2_1/c$

Hall symbol: -P 2ybc

$a = 7.9826$ (5) Å

$b = 21.3400$ (7) Å

$c = 8.7253$ (5) Å

$\beta = 90.471$ (7)°

$V = 1486.29$ (14) Å³

$Z = 4$

$F(000) = 632$

$D_x = 1.360$ Mg m⁻³

Mo $K\alpha$ radiation, $\lambda = 0.71073$ Å

Cell parameters from 2240 reflections

$\theta = 2.5$ – 26.4 °

$\mu = 0.22$ mm⁻¹

$T = 293$ K

Prism, translucent red

$0.5 \times 0.3 \times 0.06$ mm

Data collection

Oxford Diffraction Xcalibur3 CCD
diffractometer

Radiation source: fine-focus sealed tube

Graphite monochromator

ω scans

Absorption correction: multi-scan

(*CrysAlis RED*; Oxford Diffraction, 2008)

$T_{\min} = 0.909$, $T_{\max} = 0.986$

9461 measured reflections

3024 independent reflections

2240 reflections with $I > 2\sigma(I)$

$R_{\text{int}} = 0.022$

$\theta_{\max} = 26.4$ °, $\theta_{\min} = 2.5$ °

$h = -9 \rightarrow 9$

$k = -26 \rightarrow 26$

$l = -6 \rightarrow 10$

Refinement

Refinement on F^2

Least-squares matrix: full

$R[F^2 > 2\sigma(F^2)] = 0.036$

$wR(F^2) = 0.104$

$S = 1.04$

3024 reflections

203 parameters

0 restraints

Primary atom site location: structure-invariant
direct methods

Secondary atom site location: difference Fourier
map

Hydrogen site location: inferred from
neighbouring sites

H-atom parameters constrained

$$w = 1/[\sigma^2(F_o^2) + (0.0639P)^2]$$

where $P = (F_o^2 + 2F_c^2)/3$
 $(\Delta/\sigma)_{\max} = 0.004$

$$\Delta\rho_{\max} = 0.21 \text{ e } \text{\AA}^{-3}$$

$$\Delta\rho_{\min} = -0.23 \text{ e } \text{\AA}^{-3}$$

Special details

Geometry. All e.s.d.'s (except the e.s.d. in the dihedral angle between two l.s. planes) are estimated using the full covariance matrix. The cell e.s.d.'s are taken into account individually in the estimation of e.s.d.'s in distances, angles and torsion angles; correlations between e.s.d.'s in cell parameters are only used when they are defined by crystal symmetry. An approximate (isotropic) treatment of cell e.s.d.'s is used for estimating e.s.d.'s involving l.s. planes.

Refinement. Refinement of F^2 against ALL reflections. The weighted R -factor wR and goodness of fit S are based on F^2 , conventional R -factors R are based on F , with F set to zero for negative F^2 . The threshold expression of $F^2 > \sigma(F^2)$ is used only for calculating R -factors(gt) *etc.* and is not relevant to the choice of reflections for refinement. R -factors based on F^2 are statistically about twice as large as those based on F , and R -factors based on ALL data will be even larger.

Fractional atomic coordinates and isotropic or equivalent isotropic displacement parameters (\AA^2)

	<i>x</i>	<i>y</i>	<i>z</i>	$U_{\text{iso}}^*/U_{\text{eq}}$
S1	0.06721 (5)	0.580998 (19)	0.13057 (5)	0.04795 (16)
O1	0.36433 (15)	0.55770 (6)	-0.00007 (15)	0.0580 (3)
H1A	0.4546	0.5529	-0.0427	0.097 (8)*
N1	0.32525 (16)	0.50389 (6)	0.08232 (15)	0.0450 (3)
N2	0.4444 (2)	0.36514 (9)	0.2067 (2)	0.0826 (6)
C1	-0.2697 (2)	0.64260 (8)	0.1895 (2)	0.0559 (5)
H1	-0.1866	0.6575	0.1250	0.0632 (16)*
C2	-0.4127 (3)	0.67764 (10)	0.2115 (2)	0.0680 (5)
H2	-0.4250	0.7159	0.1614	0.0632 (16)*
C3	-0.5363 (2)	0.65684 (9)	0.3058 (2)	0.0623 (5)
H3	-0.6328	0.6805	0.3198	0.0632 (16)*
C4	-0.5168 (2)	0.60064 (9)	0.3797 (2)	0.0628 (5)
H4	-0.6001	0.5864	0.4448	0.0632 (16)*
C5	-0.3749 (2)	0.56499 (9)	0.3585 (2)	0.0544 (5)
H5	-0.3638	0.5268	0.4090	0.0632 (16)*
C6	-0.24840 (18)	0.58563 (7)	0.26236 (17)	0.0408 (4)
C7	-0.09669 (18)	0.54839 (7)	0.23836 (16)	0.0390 (4)
C8	-0.06423 (19)	0.48957 (7)	0.28617 (18)	0.0415 (4)
H8	-0.1393	0.4670	0.3456	0.0632 (16)*
C9	0.18360 (19)	0.51144 (7)	0.14809 (17)	0.0388 (3)
C10	0.09381 (18)	0.46385 (7)	0.23958 (16)	0.0375 (3)
C11	0.14890 (19)	0.40472 (7)	0.27078 (16)	0.0391 (4)
C12	0.3148 (2)	0.38504 (8)	0.2323 (2)	0.0523 (4)
C13	0.04594 (19)	0.35461 (7)	0.34177 (17)	0.0378 (3)
C14	-0.1207 (2)	0.34566 (7)	0.29922 (18)	0.0427 (4)
H14	-0.1707	0.3724	0.2282	0.0632 (16)*
C15	-0.2121 (2)	0.29741 (7)	0.36173 (19)	0.0491 (4)
H15	-0.3234	0.2919	0.3324	0.0632 (16)*
C16	-0.1409 (2)	0.25741 (8)	0.4668 (2)	0.0550 (5)
H16	-0.2034	0.2248	0.5082	0.0632 (16)*
C17	0.0237 (2)	0.26584 (8)	0.5107 (2)	0.0545 (4)
H17	0.0718	0.2393	0.5833	0.0632 (16)*

C18	0.1177 (2)	0.31341 (8)	0.44739 (18)	0.0468 (4)
H18	0.2297	0.3180	0.4754	0.0632 (16)*

Atomic displacement parameters (Å²)

	U^{11}	U^{22}	U^{33}	U^{12}	U^{13}	U^{23}
S1	0.0387 (2)	0.0410 (2)	0.0644 (3)	0.00067 (16)	0.01095 (19)	0.00928 (19)
O1	0.0426 (7)	0.0559 (7)	0.0759 (9)	-0.0023 (5)	0.0200 (6)	0.0146 (6)
N1	0.0363 (7)	0.0461 (8)	0.0526 (8)	-0.0029 (6)	0.0073 (6)	0.0049 (6)
N2	0.0541 (11)	0.0943 (13)	0.0999 (14)	0.0288 (9)	0.0251 (9)	0.0426 (11)
C1	0.0530 (11)	0.0508 (10)	0.0639 (11)	0.0104 (8)	0.0127 (8)	0.0087 (9)
C2	0.0679 (13)	0.0587 (12)	0.0774 (13)	0.0254 (10)	0.0106 (10)	0.0133 (10)
C3	0.0495 (11)	0.0632 (12)	0.0743 (12)	0.0198 (9)	0.0064 (9)	-0.0050 (10)
C4	0.0458 (10)	0.0657 (12)	0.0774 (13)	0.0065 (9)	0.0213 (9)	-0.0022 (10)
C5	0.0466 (10)	0.0464 (9)	0.0706 (12)	0.0045 (8)	0.0148 (8)	0.0036 (8)
C6	0.0361 (8)	0.0401 (9)	0.0462 (9)	0.0009 (6)	0.0034 (7)	-0.0061 (7)
C7	0.0352 (8)	0.0386 (8)	0.0435 (8)	-0.0015 (6)	0.0050 (6)	-0.0032 (7)
C8	0.0390 (9)	0.0380 (8)	0.0476 (9)	-0.0012 (6)	0.0094 (7)	0.0020 (7)
C9	0.0336 (8)	0.0391 (8)	0.0439 (8)	-0.0002 (6)	0.0028 (6)	-0.0006 (7)
C10	0.0334 (8)	0.0399 (8)	0.0391 (8)	-0.0011 (6)	0.0030 (6)	-0.0012 (6)
C11	0.0348 (8)	0.0432 (8)	0.0396 (8)	0.0035 (6)	0.0023 (6)	0.0016 (6)
C12	0.0427 (10)	0.0565 (10)	0.0579 (11)	0.0085 (8)	0.0079 (8)	0.0176 (8)
C13	0.0407 (9)	0.0344 (8)	0.0385 (8)	0.0042 (6)	0.0067 (6)	-0.0013 (6)
C14	0.0421 (9)	0.0385 (8)	0.0476 (9)	0.0051 (7)	0.0025 (7)	0.0003 (7)
C15	0.0438 (10)	0.0427 (9)	0.0611 (11)	-0.0012 (7)	0.0063 (8)	-0.0017 (8)
C16	0.0628 (12)	0.0405 (9)	0.0619 (11)	-0.0011 (8)	0.0157 (9)	0.0045 (8)
C17	0.0671 (12)	0.0442 (9)	0.0522 (10)	0.0097 (8)	0.0025 (8)	0.0114 (8)
C18	0.0475 (10)	0.0435 (9)	0.0492 (9)	0.0067 (7)	-0.0013 (7)	0.0019 (7)

Geometric parameters (Å, °)

S1—C9	1.7571 (15)	C7—C8	1.347 (2)
S1—C7	1.7609 (15)	C8—C10	1.438 (2)
O1—N1	1.3916 (17)	C8—H8	0.9300
O1—H1A	0.8200	C9—C10	1.480 (2)
N1—C9	1.282 (2)	C10—C11	1.363 (2)
N2—C12	1.142 (2)	C11—C12	1.432 (2)
C1—C2	1.379 (2)	C11—C13	1.487 (2)
C1—C6	1.382 (2)	C13—C14	1.391 (2)
C1—H1	0.9300	C13—C18	1.394 (2)
C2—C3	1.365 (3)	C14—C15	1.377 (2)
C2—H2	0.9300	C14—H14	0.9300
C3—C4	1.370 (3)	C15—C16	1.373 (2)
C3—H3	0.9300	C15—H15	0.9300
C4—C5	1.378 (2)	C16—C17	1.378 (2)
C4—H4	0.9300	C16—H16	0.9300
C5—C6	1.390 (2)	C17—C18	1.380 (2)
C5—H5	0.9300	C17—H17	0.9300

C6—C7	1.465 (2)	C18—H18	0.9300
C9—S1—C7	90.83 (7)	N1—C9—S1	122.34 (12)
N1—O1—H1A	109.5	C10—C9—S1	111.62 (11)
C9—N1—O1	109.24 (12)	C11—C10—C8	125.41 (13)
C2—C1—C6	120.82 (17)	C11—C10—C9	125.87 (13)
C2—C1—H1	119.6	C8—C10—C9	108.69 (13)
C6—C1—H1	119.6	C10—C11—C12	121.48 (14)
C3—C2—C1	120.71 (18)	C10—C11—C13	124.78 (13)
C3—C2—H2	119.6	C12—C11—C13	113.72 (13)
C1—C2—H2	119.6	N2—C12—C11	174.86 (18)
C2—C3—C4	119.24 (17)	C14—C13—C18	118.49 (14)
C2—C3—H3	120.4	C14—C13—C11	121.21 (13)
C4—C3—H3	120.4	C18—C13—C11	120.23 (14)
C3—C4—C5	120.74 (18)	C15—C14—C13	120.35 (15)
C3—C4—H4	119.6	C15—C14—H14	119.8
C5—C4—H4	119.6	C13—C14—H14	119.8
C4—C5—C6	120.52 (17)	C16—C15—C14	120.80 (16)
C4—C5—H5	119.7	C16—C15—H15	119.6
C6—C5—H5	119.7	C14—C15—H15	119.6
C1—C6—C5	117.97 (15)	C15—C16—C17	119.55 (16)
C1—C6—C7	120.69 (14)	C15—C16—H16	120.2
C5—C6—C7	121.34 (14)	C17—C16—H16	120.2
C8—C7—C6	128.19 (14)	C16—C17—C18	120.36 (16)
C8—C7—S1	113.06 (11)	C16—C17—H17	119.8
C6—C7—S1	118.74 (11)	C18—C17—H17	119.8
C7—C8—C10	115.79 (13)	C17—C18—C13	120.44 (16)
C7—C8—H8	122.1	C17—C18—H18	119.8
C10—C8—H8	122.1	C13—C18—H18	119.8
N1—C9—C10	125.99 (14)		
C6—C1—C2—C3	0.1 (3)	N1—C9—C10—C11	1.3 (3)
C1—C2—C3—C4	0.3 (3)	S1—C9—C10—C11	178.39 (13)
C2—C3—C4—C5	-0.6 (3)	N1—C9—C10—C8	-176.87 (15)
C3—C4—C5—C6	0.4 (3)	S1—C9—C10—C8	0.27 (16)
C2—C1—C6—C5	-0.3 (3)	C8—C10—C11—C12	-174.00 (15)
C2—C1—C6—C7	179.74 (18)	C9—C10—C11—C12	8.2 (2)
C4—C5—C6—C1	0.0 (3)	C8—C10—C11—C13	7.8 (2)
C4—C5—C6—C7	-179.99 (16)	C9—C10—C11—C13	-169.97 (14)
C1—C6—C7—C8	-172.02 (16)	C10—C11—C12—N2	177 (2)
C5—C6—C7—C8	8.0 (3)	C13—C11—C12—N2	-5 (2)
C1—C6—C7—S1	6.3 (2)	C10—C11—C13—C14	41.3 (2)
C5—C6—C7—S1	-173.67 (13)	C12—C11—C13—C14	-137.00 (15)
C9—S1—C7—C8	0.99 (13)	C10—C11—C13—C18	-142.00 (16)
C9—S1—C7—C6	-177.60 (12)	C12—C11—C13—C18	39.7 (2)
C6—C7—C8—C10	177.39 (14)	C18—C13—C14—C15	0.6 (2)
S1—C7—C8—C10	-1.04 (18)	C11—C13—C14—C15	177.37 (14)
O1—N1—C9—C10	176.52 (13)	C13—C14—C15—C16	0.0 (2)

O1—N1—C9—S1	-0.34 (19)	C14—C15—C16—C17	0.3 (2)
C7—S1—C9—N1	176.57 (14)	C15—C16—C17—C18	-1.2 (3)
C7—S1—C9—C10	-0.69 (12)	C16—C17—C18—C13	1.9 (2)
C7—C8—C10—C11	-177.64 (15)	C14—C13—C18—C17	-1.5 (2)
C7—C8—C10—C9	0.49 (19)	C11—C13—C18—C17	-178.36 (14)

Hydrogen-bond geometry (Å, °)

<i>D</i> —H \cdots <i>A</i>	<i>D</i> —H	H \cdots <i>A</i>	<i>D</i> \cdots <i>A</i>	<i>D</i> —H \cdots <i>A</i>
O1—H1A \cdots N1 ⁱ	0.82	2.16	2.900 (2)	150
O1—H1A \cdots N2 ⁱ	0.82	2.40	2.888 (2)	119
C1—H1 \cdots S1	0.93	2.60	3.041 (2)	109

Symmetry code: (i) $-x+1, -y+1, -z$.