

catena-Poly[[[aquapyridinezinc(II)]- μ_2 -3,3'-(*p*-phenylene)diacrylate] pyridine solvate]

Dongpo Su, Desheng Song and Zhiyong Fu*

School of Chemistry and Chemical Engineering, South China University of Technology, Guangzhou, People's Republic of China

Correspondence e-mail: zyfu@scut.edu.cn

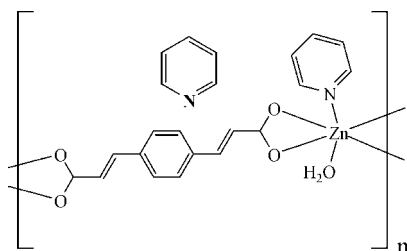
Received 27 July 2010; accepted 17 August 2010

 Key indicators: single-crystal X-ray study; $T = 110$ K; mean $\sigma(\text{C}-\text{C}) = 0.004$ Å; R factor = 0.035; wR factor = 0.088; data-to-parameter ratio = 13.7.

The title compound, $\{[\text{Zn}(\text{C}_{12}\text{H}_8\text{O}_4)(\text{C}_5\text{H}_5\text{N})(\text{H}_2\text{O})] \cdot \text{C}_5\text{H}_5\text{N}\}_n$, has been prepared by hydrothermal reaction. The Zn^{II} atom is six-coordinated by four carboxylate O atoms of two *p*-phenylenediacylate (ppda^{2-}) ligands, one N atom of a pyridine molecule and one O atom of a water molecule in a distorted octahedral environment. The carboxylate groups of the ppda^{2-} anions are in a bridging–chelating mode, in which two O atoms chelate one Zn^{2+} ion. These connections result in an extended chain structure. Parallel packing of the chains forms a two-dimensional network with intermolecular edge-to-face interactions. Further linkages between the layers through $\text{O}-\text{H} \cdots \text{O}$ hydrogen-bonding interactions result in a three-dimensional supramolecular architecture with one-dimensional rectangular channels.

Related literature

For the applications of metal-organic frameworks, see: Li *et al.* (2009); Zhang *et al.* (2010). For the rational design and synthesis of coordination polymers by covalent interactions or supramolecular contacts, see: Jose *et al.* (2010); Zeng *et al.* (2010). For a similar complex, see: Sun *et al.* (2009).



Experimental

Crystal data

$[\text{Zn}(\text{C}_{12}\text{H}_8\text{O}_4)(\text{C}_5\text{H}_5\text{N})(\text{H}_2\text{O})] \cdot \text{C}_5\text{H}_5\text{N}$
 $M_r = 457.77$

Monoclinic, $P2_1/c$
 $a = 10.2132$ (15) Å
 $b = 17.375$ (3) Å

$c = 12.8144$ (19) Å
 $\beta = 112.360$ (2)°
 $V = 2103.0$ (5) Å³
 $Z = 4$

Mo $K\alpha$ radiation
 $\mu = 1.20$ mm⁻¹
 $T = 110$ K
 $0.30 \times 0.16 \times 0.15$ mm

Data collection

Bruker SMART CCD diffractometer
 Absorption correction: multi-scan (SADABS; Sheldrick, 1996)
 $T_{\text{min}} = 0.74$, $T_{\text{max}} = 0.85$

9012 measured reflections
 3657 independent reflections
 2923 reflections with $I > 2\sigma(I)$
 $R_{\text{int}} = 0.026$

Refinement

$R[F^2 > 2\sigma(F^2)] = 0.035$
 $wR(F^2) = 0.088$
 $S = 1.05$
 3657 reflections
 267 parameters
 1 restraint

H atoms treated by a mixture of independent and constrained refinement
 $\Delta\rho_{\text{max}} = 0.91$ e Å⁻³
 $\Delta\rho_{\text{min}} = -0.81$ e Å⁻³

Table 1

Selected geometric parameters (Å, °).

Zn1–N1	2.093 (2)	Zn1–O2 ¹	2.0368 (18)
Zn1–O5	2.0288 (19)	Zn1–O1 ¹	2.3019 (18)
Zn1–O4	2.0324 (18)	Zn1–O3	2.4099 (19)

 Symmetry code: (i) $x - 1, -y + \frac{1}{2}, z + \frac{1}{2}$.

Table 2

Hydrogen-bond geometry (Å, °).

$D-\text{H} \cdots A$	$D-\text{H}$	$\text{H} \cdots A$	$D \cdots A$	$D-\text{H} \cdots A$
$\text{O5}-\text{H1} \cdots \text{O4}^{\text{ii}}$	0.80 (4)	1.94 (4)	2.743 (4)	172 (4)

 Symmetry code: (ii) $-x + 1, -y, -z + 1$.

Data collection: SMART (Bruker, 1998); cell refinement: SAINT (Bruker, 1998); data reduction: SAINT; program(s) used to solve structure: SHELXS97 (Sheldrick, 2008); program(s) used to refine structure: SHELXL97 (Sheldrick, 2008); molecular graphics: SHELXTL (Sheldrick, 2008); software used to prepare material for publication: SHELXTL.

The authors thank the NNSFC (No. 20701014), the Fundamental Research Funds for the Central Universities (2009ZM0030) and the SRP program of the SCUT for financial support.

Supplementary data and figures for this paper are available from the IUCr electronic archives (Reference: PB2038).

References

- Bruker (1998). SMART and SAINT. Bruker AXS Inc., Madison, Wisconsin, USA.
- Jose, J. C., Herbert, H. & Miguel, P. H. (2010). *Inorg. Chim. Acta*, **363**, 1179–1185.
- Li, J. R., Kuppler, R. J. & Zhou, H. C. (2009). *Chem. Soc. Rev.* **38**, 1477–1504.
- Sheldrick, G. M. (1996). SADABS. University of Göttingen, Germany.
- Sheldrick, G. M. (2008). *Acta Cryst. A* **64**, 112–122.
- Sun, Q., Yue, Q., Zhang, J. Y., Wang, L., Li, X. & Gao, E. Q. (2009). *Cryst. Growth Des.* **9**, 2310–2317.
- Zeng, F. H., Ni, J., Wang, Q. G. & Xie, Y. S. (2010). *Cryst. Growth Des.* **10**, 1611–1622.
- Zhang, L., Yao, Y. L., Che, Y. X. & Zheng, J. M. (2010). *Cryst. Growth Des.* **10**, 528–533.

supporting information

Acta Cryst. (2010). E66, m1163 [https://doi.org/10.1107/S1600536810033167]

catena-Poly[[[aquapyridinezinc(II)]- μ_2 -3,3'-(*p*-phenylene)diacrylato] pyridine solvate]**Dongpo Su, Desheng Song and Zhiyong Fu****S1. Comment**

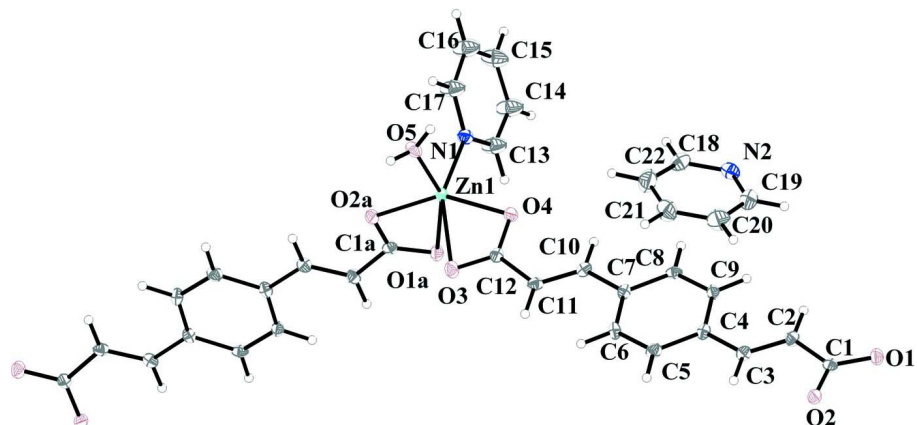
Metal-organic frameworks (MOFs) became one of the most active research areas in chemistry and materials in recent years due to their intriguing variety of architectures as well as promising applications as functional materials (Li *et al.*, 2009; Zhang *et al.*, 2010). One of the current interesting topics is to rationally design and synthesize coordination polymers and supramolecular organization by coordinated covalent bonds or supramolecular contacts (Zeng *et al.*, 2010; Jose *et al.*, 2010). Herein, we report the synthesis and characterization of a new metal organic framework with three-dimensional supramolecular structural motif. In the title compound, the Zn^{II} center is six-coordinated in a distorted octahedral geometry (Figure 1), surrounded by O1, O2, O4 from two ppda²⁻ ligand and O5 from a water molecule in the equatorial plane, and N1, O3 of pyridine molecule and ppda²⁻ ligand respectively in the axial position. The ppda²⁻ anion adopts a bridging coordination mode, interconnect with the zinc ions forming a 1-D infinite chain. The shortest distance between the neighbour zinc centers is 15.26 Å. The parallel chains are arranged into a two-dimensional network by intermolecular edge-to-face C—H \cdots π interactions (Figure 2). Two neighboring pyridine molecules from adjacent chains are parallel and form a dihedral angle of 58.1° with the plane of uncoordinated pyridine molecule. C—H \cdots π interactions exist between uncoordinated pyridine molecule and coordinated pyridine molecules. The C19—H19A and C22—H22A groups point to the center of adjacent pyridine rings, with H \cdots centroid distances 2.9408 (3) and 3.3096 (5) Å. These two-dimensional networks are further linked *via* interlayer strong O—H \cdots O hydrogen-bonding interactions, forming a three-dimensional supramolecular architecture with one-dimensional rectangle-shaped channels along the *a* direction (Figure 3). The H1 \cdots O4 distance is 1.8628 Å and the O5—H1 \cdots O4 bond angle is 171.58°. Guest pyridine molecules are situated in the cavities.

S2. Experimental

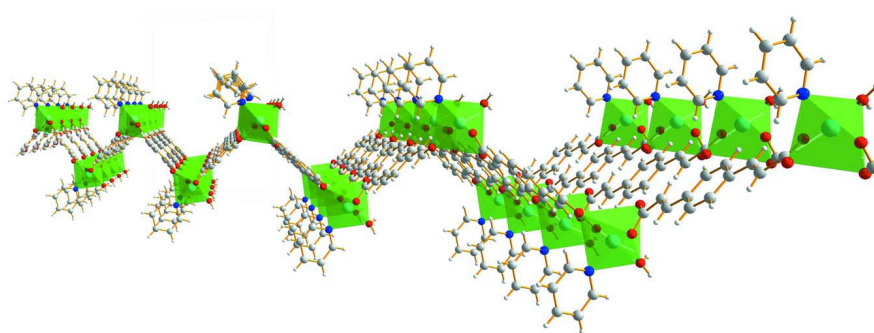
A mixture of H₂ppda (0.0218 g, 0.1 mmol), Zn(OAc)₂·2H₂O (0.0219 g, 0.1 mmol), 4,4'-bpy (0.0156 g, 0.1 mmol), and py/H₂O (1:3, 12 ml) was sealed in a 25 ml Teflon-lined bomb and heated at 353 K for 48 h. The reaction mixture was then allowed to cool to room temperature at a rate of 3 K/h. Colorless block-shape crystals were obtained.

S3. Refinement

H atoms were positioned geometrically and refined using a riding model, with C—H = 0.93–0.97 Å and with $U_{\text{iso}}(\text{H}) = 1.2$ (1.5 for methyl groups) times $U_{\text{eq}}(\text{C})$. The non-hydrogen atoms were refined anisotropically. 34 low-theta reflections were omitted from the data set. These Low-theta reflections which calculate large I but have a near-zero F_{obs} , might have been obscured by the beamstop. They were omitted for a well refinement. A restraint was applied for the O5 and H2 atom with O5—H2 = 0.82 Å.

**Figure 1**

The molecular structure of (I), with atom labels and 50% probability displacement ellipsoids for non-H atoms.

**Figure 2**

View of the two-dimensional supramolecular layer of the title compound.

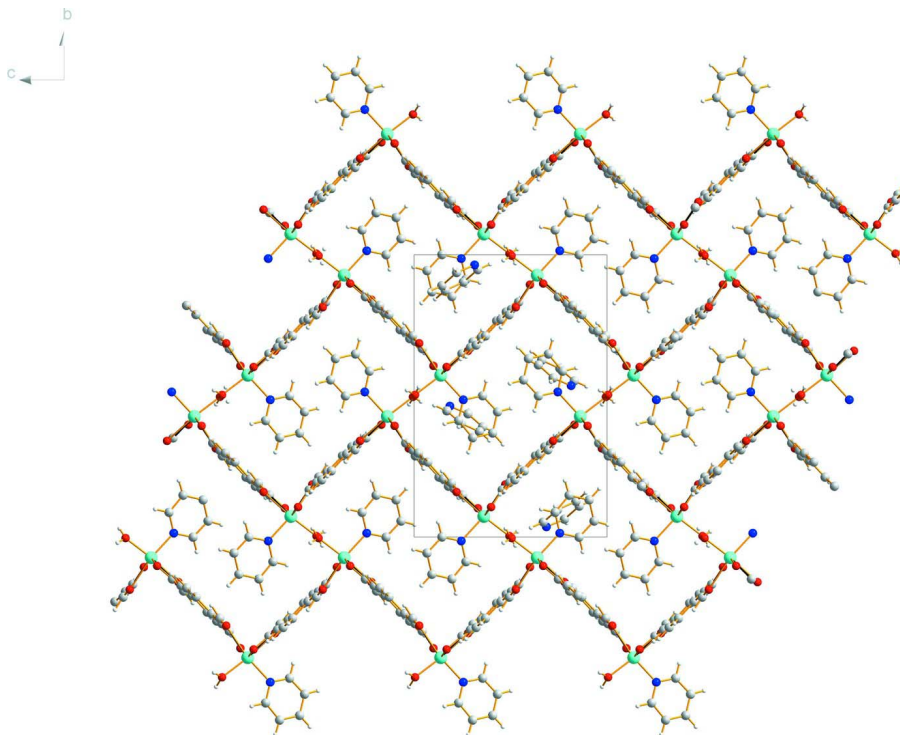


Figure 3
Three-dimensional supramolecular network of the title complex.

catena-Poly[[[aquapridinezinc(II)]- μ -2,3,3'-(*p*-phenylene)diacrylato] pyridine solvate]

Crystal data

[Zn(C₁₂H₈O₄)(C₅H₅N)(H₂O)]·C₅H₅N

$M_r = 457.77$

Monoclinic, $P2_1/c$

Hall symbol: -P 2ybc

$a = 10.2132$ (15) Å

$b = 17.375$ (3) Å

$c = 12.8144$ (19) Å

$\beta = 112.360$ (2)°

$V = 2103.0$ (5) Å³

$Z = 4$

$F(000) = 944$

$D_x = 1.446$ Mg m⁻³

Mo $K\alpha$ radiation, $\lambda = 0.71073$ Å

Cell parameters from 3657 reflections

$\theta = 2.9$ – 25.0 °

$\mu = 1.20$ mm⁻¹

$T = 110$ K

Block, colorless

$0.30 \times 0.16 \times 0.15$ mm

Data collection

Bruker SMART CCD

diffractometer

Radiation source: fine-focus sealed tube

Graphite monochromator

ω scans

Absorption correction: multi-scan

(*SADABS*; Sheldrick, 1996)

$T_{\min} = 0.74$, $T_{\max} = 0.85$

9012 measured reflections

3657 independent reflections

2923 reflections with $I > 2\sigma(I)$

$R_{\text{int}} = 0.026$

$\theta_{\text{max}} = 25.0$ °, $\theta_{\text{min}} = 2.9$ °

$h = -12 \rightarrow 12$

$k = -20 \rightarrow 15$

$l = -11 \rightarrow 15$

Refinement

Refinement on F^2
 Least-squares matrix: full
 $R[F^2 > 2\sigma(F^2)] = 0.035$
 $wR(F^2) = 0.088$
 $S = 1.05$
 3657 reflections
 267 parameters
 1 restraint
 Primary atom site location: structure-invariant
 direct methods

Secondary atom site location: difference Fourier
 map
 Hydrogen site location: inferred from
 neighbouring sites
 H atoms treated by a mixture of independent
 and constrained refinement
 $w = 1/[\sigma^2(F_o^2) + (0.044P)^2 + 1.4847P]$
 where $P = (F_o^2 + 2F_c^2)/3$
 $(\Delta/\sigma)_{\max} < 0.001$
 $\Delta\rho_{\max} = 0.91 \text{ e } \text{\AA}^{-3}$
 $\Delta\rho_{\min} = -0.81 \text{ e } \text{\AA}^{-3}$

Special details

Geometry. All e.s.d.'s (except the e.s.d. in the dihedral angle between two l.s. planes) are estimated using the full covariance matrix. The cell e.s.d.'s are taken into account individually in the estimation of e.s.d.'s in distances, angles and torsion angles; correlations between e.s.d.'s in cell parameters are only used when they are defined by crystal symmetry. An approximate (isotropic) treatment of cell e.s.d.'s is used for estimating e.s.d.'s involving l.s. planes.

Refinement. Refinement of F^2 against ALL reflections. The weighted R -factor wR and goodness of fit S are based on F^2 , conventional R -factors R are based on F , with F set to zero for negative F^2 . The threshold expression of $F^2 > \sigma(F^2)$ is used only for calculating R -factors(gt) etc. and is not relevant to the choice of reflections for refinement. R -factors based on F^2 are statistically about twice as large as those based on F , and R -factors based on ALL data will be even larger.

Fractional atomic coordinates and isotropic or equivalent isotropic displacement parameters (\AA^2)

	x	y	z	$U_{\text{iso}}^*/U_{\text{eq}}$
N1	0.5178 (2)	-0.01394 (13)	0.75537 (18)	0.0163 (5)
C18	0.9544 (3)	0.03667 (18)	0.3132 (2)	0.0260 (7)
H18A	0.9348	0.0054	0.3663	0.031*
Zn1	0.41999 (3)	0.072906 (17)	0.63842 (2)	0.01285 (11)
C1	1.3097 (3)	0.35091 (15)	0.2483 (2)	0.0145 (6)
O1	1.44021 (18)	0.34052 (11)	0.27971 (15)	0.0177 (4)
O2	1.24483 (18)	0.39778 (11)	0.16907 (14)	0.0149 (4)
O3	0.40900 (19)	0.18631 (11)	0.52712 (15)	0.0193 (4)
O4	0.58751 (18)	0.10624 (10)	0.60053 (14)	0.0148 (4)
O5	0.3145 (2)	0.00368 (12)	0.50538 (16)	0.0183 (4)
H2	0.239 (3)	0.0196 (18)	0.451 (2)	0.031 (9)*
H1	0.351 (4)	-0.026 (2)	0.476 (3)	0.030 (10)*
C2	1.2295 (3)	0.30907 (16)	0.3060 (2)	0.0155 (6)
H2A	1.2736	0.2670	0.3539	0.019*
C3	1.0980 (3)	0.32845 (15)	0.2929 (2)	0.0146 (6)
H3A	1.0559	0.3692	0.2417	0.018*
C4	1.0110 (3)	0.29379 (15)	0.3489 (2)	0.0144 (6)
C5	0.8720 (3)	0.31994 (16)	0.3217 (2)	0.0167 (6)
H5A	0.8369	0.3606	0.2688	0.020*
C6	0.7854 (3)	0.28786 (16)	0.3702 (2)	0.0158 (6)
H6A	0.6909	0.3058	0.3489	0.019*
C7	0.8350 (3)	0.22904 (15)	0.4506 (2)	0.0137 (5)
C8	0.9737 (3)	0.20268 (15)	0.4779 (2)	0.0137 (6)
H8A	1.0089	0.1623	0.5313	0.016*

C9	1.0604 (3)	0.23431 (15)	0.4286 (2)	0.0141 (5)
H9A	1.1543	0.2157	0.4489	0.017*
C10	0.7473 (3)	0.19340 (15)	0.5051 (2)	0.0138 (6)
H10A	0.7887	0.1517	0.5548	0.017*
C11	0.6165 (3)	0.21278 (15)	0.4930 (2)	0.0152 (6)
H11A	0.5755	0.2576	0.4507	0.018*
C12	0.5322 (3)	0.16709 (15)	0.5429 (2)	0.0141 (6)
C13	0.6192 (3)	0.00035 (18)	0.8551 (2)	0.0309 (5)
H13A	0.6482	0.0522	0.8739	0.037*
C14	0.6844 (4)	-0.05630 (18)	0.9326 (3)	0.0360 (6)
H14A	0.7576	-0.0436	1.0027	0.043*
C15	0.6423 (4)	-0.13168 (19)	0.9073 (3)	0.0345 (8)
H15A	0.6827	-0.1715	0.9607	0.041*
C16	0.5408 (4)	-0.14810 (19)	0.8033 (3)	0.0360 (6)
H16A	0.5118	-0.1996	0.7817	0.043*
C17	0.4820 (4)	-0.08740 (17)	0.7307 (3)	0.0309 (5)
H17A	0.4116	-0.0988	0.6588	0.037*
N2	1.0893 (3)	0.05277 (14)	0.3312 (2)	0.0227 (6)
C19	1.1138 (3)	0.09713 (18)	0.2556 (3)	0.0296 (7)
H19A	1.2093	0.1091	0.2676	0.035*
C20	1.0086 (4)	0.12641 (19)	0.1615 (3)	0.0344 (8)
H20A	1.0309	0.1575	0.1095	0.041*
C21	0.8701 (3)	0.1097 (2)	0.1440 (3)	0.0330 (8)
H21A	0.7946	0.1296	0.0802	0.040*
C22	0.8431 (3)	0.0636 (2)	0.2209 (3)	0.0343 (8)
H22A	0.7485	0.0505	0.2102	0.041*

Atomic displacement parameters (Å²)

	U^{11}	U^{22}	U^{33}	U^{12}	U^{13}	U^{23}
N1	0.0178 (12)	0.0153 (12)	0.0166 (11)	0.0013 (10)	0.0073 (9)	0.0012 (9)
C18	0.0300 (17)	0.0237 (16)	0.0258 (16)	-0.0048 (13)	0.0123 (14)	0.0010 (13)
Zn1	0.01274 (17)	0.01317 (17)	0.01527 (17)	0.00028 (13)	0.00828 (12)	0.00003 (13)
C1	0.0161 (14)	0.0127 (14)	0.0160 (13)	-0.0010 (11)	0.0075 (11)	-0.0045 (11)
O1	0.0132 (10)	0.0198 (10)	0.0219 (10)	0.0013 (8)	0.0088 (8)	0.0035 (8)
O2	0.0149 (9)	0.0156 (9)	0.0166 (9)	-0.0006 (8)	0.0087 (8)	0.0029 (8)
O3	0.0166 (10)	0.0215 (11)	0.0244 (10)	0.0026 (8)	0.0130 (8)	0.0056 (8)
O4	0.0153 (9)	0.0145 (10)	0.0174 (9)	0.0008 (8)	0.0093 (8)	0.0014 (8)
O5	0.0181 (11)	0.0179 (11)	0.0179 (10)	0.0039 (9)	0.0058 (9)	-0.0049 (9)
C2	0.0159 (14)	0.0166 (14)	0.0161 (13)	0.0002 (11)	0.0084 (11)	0.0021 (11)
C3	0.0156 (13)	0.0154 (14)	0.0128 (13)	-0.0010 (11)	0.0055 (11)	0.0009 (11)
C4	0.0127 (13)	0.0178 (14)	0.0131 (13)	-0.0024 (11)	0.0056 (11)	-0.0018 (11)
C5	0.0175 (14)	0.0161 (14)	0.0157 (13)	-0.0014 (11)	0.0056 (11)	0.0032 (11)
C6	0.0107 (13)	0.0206 (15)	0.0170 (13)	0.0012 (11)	0.0063 (11)	-0.0006 (11)
C7	0.0124 (13)	0.0158 (14)	0.0134 (13)	-0.0030 (11)	0.0053 (10)	-0.0021 (11)
C8	0.0174 (14)	0.0106 (13)	0.0106 (12)	-0.0006 (11)	0.0024 (11)	0.0009 (10)
C9	0.0110 (13)	0.0157 (14)	0.0157 (13)	0.0002 (11)	0.0054 (10)	-0.0028 (11)
C10	0.0155 (13)	0.0143 (14)	0.0104 (12)	-0.0027 (11)	0.0038 (10)	-0.0003 (10)

C11	0.0190 (14)	0.0118 (13)	0.0163 (13)	-0.0007 (11)	0.0082 (11)	0.0016 (11)
C12	0.0141 (14)	0.0162 (14)	0.0138 (13)	-0.0026 (11)	0.0073 (11)	-0.0051 (11)
C13	0.0386 (13)	0.0196 (12)	0.0240 (11)	-0.0022 (10)	0.0002 (10)	-0.0009 (9)
C14	0.0455 (14)	0.0231 (12)	0.0272 (12)	-0.0026 (11)	0.0000 (11)	-0.0008 (10)
C15	0.047 (2)	0.0245 (17)	0.0240 (16)	0.0069 (15)	0.0042 (15)	0.0071 (13)
C16	0.0455 (14)	0.0231 (12)	0.0272 (12)	-0.0026 (11)	0.0000 (11)	-0.0008 (10)
C17	0.0386 (13)	0.0196 (12)	0.0240 (11)	-0.0022 (10)	0.0002 (10)	-0.0009 (9)
N2	0.0251 (14)	0.0194 (13)	0.0230 (13)	0.0037 (10)	0.0084 (11)	-0.0013 (10)
C19	0.0239 (16)	0.0305 (18)	0.0362 (18)	-0.0024 (14)	0.0135 (14)	0.0017 (14)
C20	0.039 (2)	0.0326 (19)	0.0330 (18)	0.0029 (15)	0.0154 (15)	0.0118 (15)
C21	0.0267 (17)	0.0352 (19)	0.0313 (17)	0.0053 (15)	0.0042 (14)	0.0083 (15)
C22	0.0227 (17)	0.039 (2)	0.0382 (19)	-0.0055 (15)	0.0081 (15)	0.0018 (16)

Geometric parameters (Å, °)

N1—C13	1.327 (4)	C5—H5A	0.9500
N1—C17	1.332 (4)	C6—C7	1.402 (4)
Zn1—N1	2.093 (2)	C6—H6A	0.9500
C18—N2	1.336 (4)	C7—C8	1.401 (4)
C18—C22	1.374 (4)	C7—C10	1.466 (4)
C18—H18A	0.9500	C8—C9	1.382 (4)
Zn1—O5	2.0288 (19)	C8—H8A	0.9500
Zn1—O4	2.0324 (18)	C9—H9A	0.9500
Zn1—O2 ⁱ	2.0368 (18)	C10—C11	1.328 (4)
Zn1—O1 ⁱ	2.3019 (18)	C10—H10A	0.9500
Zn1—O3	2.4099 (19)	C11—C12	1.484 (4)
Zn1—C1 ⁱ	2.492 (3)	C11—H11A	0.9500
Zn1—C12	2.560 (3)	C13—C14	1.377 (4)
C1—O1	1.250 (3)	C13—H13A	0.9500
C1—O2	1.273 (3)	C14—C15	1.378 (4)
C1—C2	1.485 (4)	C14—H14A	0.9500
C1—Zn1 ⁱⁱ	2.492 (3)	C15—C16	1.371 (4)
O1—Zn1 ⁱⁱⁱ	2.3019 (18)	C15—H15A	0.9500
O2—Zn1 ⁱⁱⁱ	2.0368 (18)	C16—C17	1.383 (4)
O3—C12	1.241 (3)	C16—H16A	0.9500
O4—C12	1.291 (3)	C17—H17A	0.9500
O5—H2	0.864 (18)	N2—C19	1.334 (4)
O5—H1	0.80 (4)	C19—C20	1.372 (4)
C2—C3	1.333 (4)	C19—H19A	0.9500
C2—H2A	0.9500	C20—C21	1.377 (5)
C3—C4	1.466 (4)	C20—H20A	0.9500
C3—H3A	0.9500	C21—C22	1.377 (5)
C4—C5	1.403 (4)	C21—H21A	0.9500
C4—C9	1.405 (4)	C22—H22A	0.9500
C5—C6	1.377 (4)		
C13—N1—C17	116.8 (2)	C6—C5—C4	121.3 (2)
C13—N1—Zn1	122.7 (2)	C6—C5—H5A	119.3

C17—N1—Zn1	120.53 (19)	C4—C5—H5A	119.3
N2—C18—C22	122.6 (3)	C5—C6—C7	120.8 (2)
N2—C18—H18A	118.7	C5—C6—H6A	119.6
C22—C18—H18A	118.7	C7—C6—H6A	119.6
O5—Zn1—O4	101.20 (8)	C8—C7—C6	118.0 (2)
O5—Zn1—O2 ⁱ	94.92 (8)	C8—C7—C10	119.1 (2)
O4—Zn1—O2 ⁱ	148.85 (8)	C6—C7—C10	122.9 (2)
N1—Zn1—O5	97.50 (9)	C9—C8—C7	121.3 (2)
O4—Zn1—N1	99.25 (8)	C9—C8—H8A	119.4
O2 ⁱ —Zn1—N1	104.90 (8)	C7—C8—H8A	119.4
O5—Zn1—O1 ⁱ	155.29 (8)	C8—C9—C4	120.6 (2)
O4—Zn1—O1 ⁱ	99.78 (7)	C8—C9—H9A	119.7
O1 ⁱ —Zn1—O2 ⁱ	60.49 (7)	C4—C9—H9A	119.7
N1—Zn1—O1 ⁱ	91.86 (8)	C11—C10—C7	127.3 (2)
O5—Zn1—O3	95.57 (7)	C11—C10—H10A	116.3
O3—Zn1—O4	58.64 (7)	C7—C10—H10A	116.3
O2 ⁱ —Zn1—O3	93.61 (7)	C10—C11—C12	122.5 (2)
N1—Zn1—O3	156.24 (8)	C10—C11—H11A	118.8
O1 ⁱ —Zn1—O3	84.33 (7)	C12—C11—H11A	118.8
O5—Zn1—C1 ⁱ	125.46 (8)	O3—C12—O4	120.6 (2)
O4—Zn1—C1 ⁱ	125.88 (8)	O3—C12—C11	120.3 (2)
O2 ⁱ —Zn1—C1 ⁱ	30.61 (8)	O4—C12—C11	119.0 (2)
N1—Zn1—C1 ⁱ	99.99 (8)	O3—C12—Zn1	68.89 (14)
O1 ⁱ —Zn1—C1 ⁱ	29.89 (7)	O4—C12—Zn1	51.76 (12)
O3—Zn1—C1 ⁱ	88.32 (7)	C11—C12—Zn1	170.73 (19)
O5—Zn1—C12	99.68 (8)	N1—C13—C14	123.2 (3)
O4—Zn1—C12	29.91 (8)	N1—C13—H13A	118.4
O2 ⁱ —Zn1—C12	121.19 (8)	C14—C13—H13A	118.4
N1—Zn1—C12	128.66 (9)	C13—C14—C15	119.1 (3)
O1 ⁱ —Zn1—C12	92.05 (7)	C13—C14—H14A	120.4
O3—Zn1—C12	28.72 (7)	C15—C14—H14A	120.4
C1 ⁱ —Zn1—C12	108.13 (8)	C16—C15—C14	118.7 (3)
O1—C1—O2	121.1 (2)	C16—C15—H15A	120.7
O1—C1—C2	119.4 (2)	C14—C15—H15A	120.7
O2—C1—C2	119.4 (2)	C15—C16—C17	118.0 (3)
O1—C1—Zn1 ⁱⁱ	66.61 (14)	C15—C16—H16A	121.0
O2—C1—Zn1 ⁱⁱ	54.53 (12)	C17—C16—H16A	121.0
C2—C1—Zn1 ⁱⁱ	173.96 (19)	N1—C17—C16	124.2 (3)
C1—O1—Zn1 ⁱⁱ	83.50 (15)	N1—C17—H17A	117.9
C1—O2—Zn1 ⁱⁱ	94.86 (15)	C16—C17—H17A	117.9
C12—O3—Zn1	82.39 (15)	C19—N2—C18	117.5 (3)
C12—O4—Zn1	98.33 (15)	N2—C19—C20	123.5 (3)
Zn1—O5—H2	121 (2)	N2—C19—H19A	118.3
Zn1—O5—H1	125 (2)	C20—C19—H19A	118.3
H2—O5—H1	105 (3)	C19—C20—C21	118.5 (3)
C3—C2—C1	122.3 (3)	C19—C20—H20A	120.7
C3—C2—H2A	118.8	C21—C20—H20A	120.7
C1—C2—H2A	118.8	C20—C21—C22	118.7 (3)

C2—C3—C4	127.2 (3)	C20—C21—H21A	120.7
C2—C3—H3A	116.4	C22—C21—H21A	120.7
C4—C3—H3A	116.4	C21—C22—C18	119.2 (3)
C5—C4—C9	117.9 (2)	C21—C22—H22A	120.4
C5—C4—C3	119.3 (2)	C18—C22—H22A	120.4
C9—C4—C3	122.8 (2)		

Symmetry codes: (i) $x-1, -y+1/2, z+1/2$; (ii) $x+1, -y+1/2, z-1/2$.

Hydrogen-bond geometry ($\text{\AA}, ^\circ$)

$D-H\cdots A$	$D-H$	$H\cdots A$	$D\cdots A$	$D-H\cdots A$
O5—H1 \cdots O4 ⁱⁱⁱ	0.80 (4)	1.94 (4)	2.743 (4)	172 (4)

Symmetry code: (iii) $-x+1, -y, -z+1$.