

Acta Crystallographica Section E

## Structure Reports

Online

ISSN 1600-5368

## 3-(3-Cyanophenyl)-N-phenyloxirane-2-carboxamide

Tai-Ran Kang

College of Chemistry and Chemical Engineering, China West Normal University,  
Nanchong 637002, People's Republic of China  
Correspondence e-mail: kangtairan@yahoo.com.cn

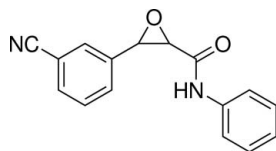
Received 5 September 2010; accepted 18 September 2010

Key indicators: single-crystal X-ray study;  $T = 291$  K; mean  $\sigma(\text{C}-\text{C}) = 0.003$  Å;  
R factor = 0.038;  $wR$  factor = 0.072; data-to-parameter ratio = 11.5.

In the title compound,  $\text{C}_{16}\text{H}_{12}\text{N}_2\text{O}_2$ , both terminal benzene rings are located at the same side of the central epoxide ring, showing a *cis* conformation. The epoxide ring makes dihedral angles of  $76.59$  (10) and  $62.40$  (11)° with the phenyl and cyanophenyl rings, respectively. Intermolecular  $\text{N}-\text{H}\cdots\text{O}$  and weak  $\text{C}-\text{H}\cdots\text{O}$  hydrogen bonding is present in the crystal structure.

## Related literature

For the use of epoxide-containing compounds as building blocks in synthesis, see: Meth-Cohn & Chen (1999); Porter & Skidmore (2000); Righi *et al.* (1996); Thijs *et al.* (1990). For related structures, see: Chen & Kang (2009*a,b*); He (2009); He *et al.* (2009).



## Experimental

## Crystal data

$\text{C}_{16}\text{H}_{12}\text{N}_2\text{O}_2$   
 $M_r = 264.28$   
Orthorhombic,  $P2_12_12_1$   
 $a = 5.459$  (2) Å

$b = 11.141$  (7) Å  
 $c = 21.844$  (5) Å  
 $V = 1328.6$  (10) Å<sup>3</sup>  
 $Z = 4$

Mo  $K\alpha$  radiation  
 $\mu = 0.09$  mm<sup>-1</sup>

$T = 291$  K  
 $0.36 \times 0.32 \times 0.26$  mm

## Data collection

Oxford Diffraction Gemini S Ultra diffractometer  
9766 measured reflections

2078 independent reflections  
1378 reflections with  $I > 2\sigma(I)$   
 $R_{\text{int}} = 0.042$

## Refinement

$R[F^2 > 2\sigma(F^2)] = 0.038$   
 $wR(F^2) = 0.072$   
 $S = 1.00$   
2078 reflections  
181 parameters

1 restraint  
H-atom parameters constrained  
 $\Delta\rho_{\text{max}} = 0.14$  e Å<sup>-3</sup>  
 $\Delta\rho_{\text{min}} = -0.18$  e Å<sup>-3</sup>

Table 1

Hydrogen-bond geometry (Å, °).

$D-\text{H}\cdots A$	$D-\text{H}$	$\text{H}\cdots A$	$D\cdots A$	$D-\text{H}\cdots A$
$\text{N1}-\text{H4}\cdots\text{O1}^i$	0.86	2.46	3.239 (3)	151 (1)
$\text{C11}-\text{H11}\cdots\text{O1}^i$	0.93	2.56	3.467 (3)	165 (1)
$\text{C12}-\text{H12}\cdots\text{O2}^{ii}$	0.93	2.55	3.302 (3)	139 (1)

Symmetry codes: (i)  $x + 1, y, z$ ; (ii)  $-x + 1, y - \frac{1}{2}, -z + \frac{3}{2}$ .

Data collection: *CrysAlis PRO* (Oxford Diffraction, 2009); cell refinement: *CrysAlis PRO*; data reduction: *CrysAlis PRO*; program(s) used to solve structure: *SHELXS97* (Sheldrick, 2008); program(s) used to refine structure: *SHELXL97* (Sheldrick, 2008); molecular graphics: *ORTEP-3* (Farrugia, 1997); software used to prepare material for publication: *SHELXL97*.

The diffraction measurements were made at the Centre for Testing and Analysis, Sichuan University. We acknowledge financial support from China West Normal University.

Supplementary data and figures for this paper are available from the IUCr electronic archives (Reference: XU5025).

## References

- Chen, L.-M. & Kang, T.-R. (2009*a*). *Acta Cryst.* **E65**, o3126.  
Chen, L.-M. & Kang, T.-R. (2009*b*). *Acta Cryst.* **E65**, o3137.  
Farrugia, L. J. (1997). *J. Appl. Cryst.* **30**, 565.  
He, L. (2009). *Acta Cryst.* **E65**, o2052.  
He, L., Qin, H.-M. & Chen, L.-M. (2009). *Acta Cryst.* **E65**, o2999.  
Meth-Cohn, O. & Chen, Y. (1999). *Tetrahedron Lett.* **40**, 6069–6072.  
Oxford Diffraction (2009). *CrysAlis PRO*. Oxford Diffraction Ltd, Yarnton, England.  
Porter, M. J. & Skidmore, J. (2000). *Chem. Commun.* pp. 1215–1225.  
Righi, G., Rumboldt, G. & Bonini, C. (1996). *J. Org. Chem.* **61**, 3557–3560.  
Sheldrick, G. M. (2008). *Acta Cryst.* **A64**, 112–122.  
Thijs, L., Porskamp, J. J. M., van Loon, A. A. W. M., Derks, M. P. W., Feenstra, R. W., Legters, J. & Zwanenburg, B. (1990). *Tetrahedron*, **46**, 2611–2614.

## supporting information

*Acta Cryst.* (2010). E66, o2628 [doi:10.1107/S1600536810037475]

### 3-(3-Cyanophenyl)-*N*-phenyloxirane-2-carboxamide

Tai-Ran Kang

#### S1. Comment

$\alpha$ ,  $\beta$ -epoxides are key intermediates for synthesizing some natural products (Porter & Skidmore, 2000; Righi *et al.*, 1996). Selective ring opening reactions of oxiranes also provide powerful and efficient routes to a variety of useful compounds including 2,3-epoxyketone (Meth-Cohn *et al.*, 1999), aziridinecarboxylate (Thijs *et al.*, 1990). Various effective systems have been developed over the years for the preparation of chiral epoxides. As a part of our interest in the synthesis of epoxides ring systems (Chen & Kang, 2009*a,b*; He, 2009, He *et al.* (2009)), we synthesis the title compound by using Darzens reaction. We report herein the crystal structure of the title compound.

The molecular structure of (I) is shown in Fig. 1. Bond lengths and angles in (I) are normal. The cyanophenyl ring and *N*-phenylformamide units adopts a *cis* conformation with respect to the epoxides ring, the dihedral angle between the two phenyl ring is 84.75 (6)°. Epoxide ring makes dihedral angles of 76.59 (10)° and 62.40 (11)° with phenyl rings C1—C6 and C10—C15, respectively. The crystal packing is stabilized by C—H···O and N—H···O hydrogen bonding (Table 1).

#### S2. Experimental

2-Chloro-*N*-phenylacetamide (0.17 g, 1.0 mmol) and sodium ethanolate (0.14 g, 2.0 mmol) were dissolved in acetonitrile (2 ml). To the solution was added 3-formylbenzonitrile (0.131 g, 1.0 mmol) at 298 K, the solution was stirred for 60 min and removal of solvent under reduced pressure, the residue was purified through column chromatography on silica gel to give compound (I). Crystals suitable for X-ray analysis were obtained by dissolving the title compound (0.02 g) in ethyl acetate (2 ml) and evaporating the solvent slowly at room temperature for about 1 d.

#### S3. Refinement

H atoms were placed in calculated positions, with C—H = 0.93–0.98 Å, and N—H = 0.86 Å, and refined using a riding model with  $U_{\text{iso}}(\text{H}) = 1.2U_{\text{eq}}(\text{C,N})$ . As no significant anomalous scattering, Friedel pairs were merged.

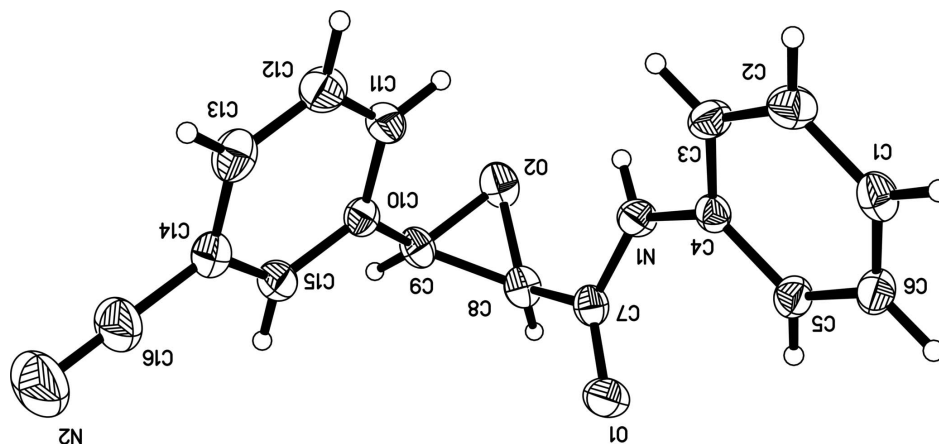


Figure 1

The molecular structure of (I) with 30% probability displacement ellipsoids (arbitrary spheres for H atoms).

### 3-(3-Cyanophenyl)-N-phenyloxirane-2-carboxamide

#### Crystal data

$C_{16}H_{12}N_2O_2$

$M_r = 264.28$

Orthorhombic,  $P2_12_12_1$

$a = 5.459 (2) \text{ \AA}$

$b = 11.141 (7) \text{ \AA}$

$c = 21.844 (5) \text{ \AA}$

$V = 1328.6 (10) \text{ \AA}^3$

$Z = 4$

$F(000) = 552$

$D_x = 1.321 \text{ Mg m}^{-3}$

Mo  $K\alpha$  radiation,  $\lambda = 0.71073 \text{ \AA}$

Cell parameters from 3256 reflections

$\theta = 3.3\text{--}29.0^\circ$

$\mu = 0.09 \text{ mm}^{-1}$

$T = 291 \text{ K}$

Block, colorless

$0.36 \times 0.32 \times 0.26 \text{ mm}$

#### Data collection

Oxford Diffraction Gemini S Ultra  
diffractometer

Radiation source: Enhance (Mo) X-ray Source

Graphite monochromator

Detector resolution:  $15.9149 \text{ pixels mm}^{-1}$

$\omega$  scans

9766 measured reflections

2078 independent reflections

1378 reflections with  $I > 2\sigma(I)$

$R_{\text{int}} = 0.042$

$\theta_{\text{max}} = 29.2^\circ$ ,  $\theta_{\text{min}} = 3.3^\circ$

$h = -7 \rightarrow 3$

$k = -15 \rightarrow 15$

$l = -29 \rightarrow 27$

#### Refinement

Refinement on  $F^2$

Least-squares matrix: full

$R[F^2 > 2\sigma(F^2)] = 0.038$

$wR(F^2) = 0.072$

$S = 1.00$

2078 reflections

181 parameters

1 restraint

Primary atom site location: structure-invariant  
direct methods

Secondary atom site location: difference Fourier  
map

Hydrogen site location: inferred from  
neighbouring sites

H-atom parameters constrained

$w = 1/[\sigma^2(F_o^2) + (0.0322P)^2]$

where  $P = (F_o^2 + 2F_c^2)/3$

$(\Delta/\sigma)_{\text{max}} < 0.001$

$\Delta\rho_{\text{max}} = 0.14 \text{ e \AA}^{-3}$

$\Delta\rho_{\text{min}} = -0.18 \text{ e \AA}^{-3}$

*Special details*

**Geometry.** All e.s.d.'s (except the e.s.d. in the dihedral angle between two l.s. planes) are estimated using the full covariance matrix. The cell e.s.d.'s are taken into account individually in the estimation of e.s.d.'s in distances, angles and torsion angles; correlations between e.s.d.'s in cell parameters are only used when they are defined by crystal symmetry. An approximate (isotropic) treatment of cell e.s.d.'s is used for estimating e.s.d.'s involving l.s. planes.

**Refinement.** Refinement of  $F^2$  against ALL reflections. The weighted  $R$ -factor  $wR$  and goodness of fit  $S$  are based on  $F^2$ , conventional  $R$ -factors  $R$  are based on  $F$ , with  $F$  set to zero for negative  $F^2$ . The threshold expression of  $F^2 > \sigma(F^2)$  is used only for calculating  $R$ -factors(gt) *etc.* and is not relevant to the choice of reflections for refinement.  $R$ -factors based on  $F^2$  are statistically about twice as large as those based on  $F$ , and  $R$ -factors based on ALL data will be even larger.

*Fractional atomic coordinates and isotropic or equivalent isotropic displacement parameters ( $\text{\AA}^2$ )*

	<i>x</i>	<i>y</i>	<i>z</i>	$U_{\text{iso}}^*/U_{\text{eq}}$
O2	0.2729 (2)	1.02915 (12)	0.76684 (6)	0.0522 (4)
O1	-0.2382 (2)	0.87594 (13)	0.69492 (6)	0.0540 (4)
N1	0.1739 (3)	0.86142 (13)	0.67637 (7)	0.0416 (4)
H4	0.3135	0.8914	0.6864	0.050*
C4	0.1740 (3)	0.76926 (15)	0.63124 (8)	0.0350 (4)
C3	0.3670 (3)	0.68860 (17)	0.63104 (9)	0.0430 (5)
H3	0.4906	0.6946	0.6602	0.052*
C6	-0.0019 (4)	0.67021 (17)	0.54450 (8)	0.0453 (5)
H6	-0.1252	0.6639	0.5153	0.054*
C10	0.1794 (3)	0.85668 (17)	0.83606 (8)	0.0389 (4)
C2	0.3746 (4)	0.59914 (18)	0.58733 (9)	0.0481 (5)
H2	0.5047	0.5453	0.5866	0.058*
C1	0.1884 (4)	0.58954 (18)	0.54452 (9)	0.0446 (5)
H1	0.1923	0.5282	0.5157	0.053*
C9	0.1163 (3)	0.97731 (17)	0.81328 (9)	0.0429 (5)
H9	0.0615	1.0337	0.8449	0.051*
C5	-0.0106 (3)	0.76092 (17)	0.58780 (8)	0.0423 (5)
H5	-0.1391	0.8157	0.5878	0.051*
C8	0.0212 (4)	1.00240 (16)	0.75099 (9)	0.0442 (4)
H8	-0.0867	1.0724	0.7479	0.053*
C15	0.0302 (3)	0.80528 (19)	0.88008 (9)	0.0470 (5)
H15	-0.1075	0.8466	0.8937	0.056*
C11	0.3875 (4)	0.79694 (18)	0.81664 (9)	0.0491 (5)
H11	0.4905	0.8318	0.7878	0.059*
C14	0.0830 (3)	0.6931 (2)	0.90422 (9)	0.0504 (5)
C7	-0.0260 (4)	0.90608 (17)	0.70496 (8)	0.0397 (4)
C12	0.4420 (4)	0.68306 (19)	0.84092 (10)	0.0567 (6)
H12	0.5803	0.6418	0.8277	0.068*
C16	-0.0707 (4)	0.6410 (2)	0.94879 (11)	0.0735 (7)
C13	0.2917 (4)	0.6330 (2)	0.88396 (10)	0.0552 (5)
H13	0.3292	0.5579	0.8999	0.066*
N2	-0.1971 (5)	0.5975 (2)	0.98491 (12)	0.1095 (10)

*Atomic displacement parameters (Å<sup>2</sup>)*

	$U^{11}$	$U^{22}$	$U^{33}$	$U^{12}$	$U^{13}$	$U^{23}$
O2	0.0630 (9)	0.0466 (8)	0.0469 (8)	-0.0178 (7)	0.0058 (7)	-0.0050 (6)
O1	0.0430 (7)	0.0614 (10)	0.0576 (9)	-0.0045 (7)	0.0059 (7)	-0.0130 (7)
N1	0.0377 (8)	0.0450 (9)	0.0421 (9)	-0.0068 (7)	0.0002 (7)	-0.0096 (8)
C4	0.0367 (9)	0.0361 (10)	0.0323 (10)	-0.0069 (8)	0.0031 (8)	0.0022 (8)
C3	0.0356 (9)	0.0477 (12)	0.0457 (11)	-0.0025 (9)	-0.0070 (9)	-0.0043 (10)
C6	0.0479 (11)	0.0535 (12)	0.0344 (10)	-0.0047 (10)	-0.0047 (9)	-0.0005 (10)
C10	0.0424 (10)	0.0417 (10)	0.0327 (10)	-0.0036 (9)	-0.0020 (8)	-0.0081 (9)
C2	0.0424 (10)	0.0458 (12)	0.0561 (13)	0.0033 (10)	0.0024 (10)	-0.0049 (10)
C1	0.0531 (12)	0.0429 (11)	0.0376 (11)	-0.0061 (10)	0.0074 (9)	-0.0057 (9)
C9	0.0511 (10)	0.0401 (11)	0.0375 (11)	-0.0015 (9)	0.0085 (9)	-0.0064 (9)
C5	0.0446 (10)	0.0454 (11)	0.0370 (11)	0.0053 (10)	-0.0027 (9)	0.0009 (9)
C8	0.0537 (11)	0.0371 (10)	0.0418 (11)	-0.0009 (9)	0.0034 (9)	-0.0023 (9)
C15	0.0455 (10)	0.0526 (12)	0.0429 (12)	0.0048 (10)	0.0038 (10)	-0.0010 (10)
C11	0.0448 (10)	0.0616 (14)	0.0408 (11)	0.0010 (10)	0.0056 (9)	-0.0048 (11)
C14	0.0535 (12)	0.0542 (13)	0.0435 (12)	0.0022 (11)	-0.0021 (10)	0.0068 (11)
C7	0.0475 (11)	0.0356 (10)	0.0359 (10)	-0.0027 (9)	0.0026 (9)	0.0031 (9)
C12	0.0561 (13)	0.0611 (15)	0.0529 (13)	0.0186 (11)	0.0003 (11)	-0.0095 (12)
C16	0.0719 (16)	0.0759 (16)	0.0726 (17)	0.0088 (14)	0.0115 (14)	0.0317 (15)
C13	0.0690 (14)	0.0470 (12)	0.0496 (12)	0.0069 (12)	-0.0081 (11)	-0.0007 (10)
N2	0.1022 (19)	0.111 (2)	0.115 (2)	0.0091 (16)	0.0281 (17)	0.0571 (17)

*Geometric parameters (Å, °)*

O2—C9	1.447 (2)	C2—H2	0.9300
O2—C8	1.448 (2)	C1—H1	0.9300
O1—C7	1.226 (2)	C9—C8	1.483 (3)
N1—C7	1.352 (2)	C9—H9	0.9800
N1—C4	1.423 (2)	C5—H5	0.9300
N1—H4	0.8600	C8—C7	1.493 (3)
C4—C3	1.384 (2)	C8—H8	0.9800
C4—C5	1.387 (2)	C15—C14	1.387 (3)
C3—C2	1.381 (3)	C15—H15	0.9300
C3—H3	0.9300	C11—C12	1.407 (2)
C6—C1	1.374 (3)	C11—H11	0.9300
C6—C5	1.385 (3)	C14—C13	1.394 (3)
C6—H6	0.9300	C14—C16	1.411 (2)
C10—C11	1.383 (3)	C12—C13	1.367 (3)
C10—C15	1.384 (2)	C12—H12	0.9300
C10—C9	1.474 (3)	C16—N2	1.155 (3)
C2—C1	1.385 (3)	C13—H13	0.9300
C9—O2—C8	61.64 (11)	C6—C5—C4	119.40 (18)
C7—N1—C4	125.86 (15)	C6—C5—H5	120.3
C7—N1—H4	117.1	C4—C5—H5	120.3
C4—N1—H4	117.1	O2—C8—C9	59.14 (12)

C3—C4—C5	120.47 (17)	O2—C8—C7	118.21 (15)
C3—C4—N1	118.09 (16)	C9—C8—C7	122.89 (16)
C5—C4—N1	121.43 (16)	O2—C8—H8	115.0
C2—C3—C4	119.58 (17)	C9—C8—H8	115.0
C2—C3—H3	120.2	C7—C8—H8	115.0
C4—C3—H3	120.2	C10—C15—C14	120.97 (18)
C1—C6—C5	120.21 (18)	C10—C15—H15	119.5
C1—C6—H6	119.9	C14—C15—H15	119.5
C5—C6—H6	119.9	C10—C11—C12	119.47 (18)
C11—C10—C15	119.82 (18)	C10—C11—H11	120.3
C11—C10—C9	121.80 (17)	C12—C11—H11	120.3
C15—C10—C9	118.31 (17)	C15—C14—C13	118.82 (19)
C3—C2—C1	120.03 (18)	C15—C14—C16	120.7 (2)
C3—C2—H2	120.0	C13—C14—C16	120.5 (2)
C1—C2—H2	120.0	O1—C7—N1	125.40 (18)
C6—C1—C2	120.31 (17)	O1—C7—C8	118.70 (17)
C6—C1—H1	119.8	N1—C7—C8	115.87 (16)
C2—C1—H1	119.8	C13—C12—C11	120.00 (19)
O2—C9—C10	117.57 (16)	C13—C12—H12	120.0
O2—C9—C8	59.22 (12)	C11—C12—H12	120.0
C10—C9—C8	124.29 (16)	N2—C16—C14	179.4 (3)
O2—C9—H9	114.7	C12—C13—C14	120.9 (2)
C10—C9—H9	114.7	C12—C13—H13	119.5
C8—C9—H9	114.7	C14—C13—H13	119.5
C7—N1—C4—C3	-143.99 (18)	C10—C9—C8—C7	1.4 (3)
C7—N1—C4—C5	37.1 (3)	C11—C10—C15—C14	-1.4 (3)
C5—C4—C3—C2	-0.2 (3)	C9—C10—C15—C14	-178.62 (18)
N1—C4—C3—C2	-179.08 (17)	C15—C10—C11—C12	1.5 (3)
C4—C3—C2—C1	-0.8 (3)	C9—C10—C11—C12	178.54 (18)
C5—C6—C1—C2	-0.8 (3)	C10—C15—C14—C13	0.8 (3)
C3—C2—C1—C6	1.3 (3)	C10—C15—C14—C16	-179.6 (2)
C8—O2—C9—C10	115.39 (18)	C4—N1—C7—O1	-2.2 (3)
C11—C10—C9—O2	3.5 (3)	C4—N1—C7—C8	179.70 (15)
C15—C10—C9—O2	-179.39 (15)	O2—C8—C7—O1	174.09 (18)
C11—C10—C9—C8	73.5 (3)	C9—C8—C7—O1	104.4 (2)
C15—C10—C9—C8	-109.4 (2)	O2—C8—C7—N1	-7.6 (2)
C1—C6—C5—C4	-0.2 (3)	C9—C8—C7—N1	-77.4 (2)
C3—C4—C5—C6	0.7 (3)	C10—C11—C12—C13	-0.9 (3)
N1—C4—C5—C6	179.55 (16)	C11—C12—C13—C14	0.3 (3)
C9—O2—C8—C7	-113.41 (19)	C15—C14—C13—C12	-0.2 (3)
C10—C9—C8—O2	-104.2 (2)	C16—C14—C13—C12	-179.8 (2)
O2—C9—C8—C7	105.6 (2)		

Hydrogen-bond geometry (Å, °)

<i>D</i> —H $\cdots$ <i>A</i>	<i>D</i> —H	H $\cdots$ <i>A</i>	<i>D</i> $\cdots$ <i>A</i>	<i>D</i> —H $\cdots$ <i>A</i>
N1—H4 $\cdots$ O1 <sup>i</sup>	0.86	2.46	3.239 (3)	151 (1)

C11—H11···O1 <sup>i</sup>	0.93	2.56	3.467 (3)	165 (1)
C12—H12···O2 <sup>ii</sup>	0.93	2.55	3.302 (3)	139 (1)

---

Symmetry codes: (i)  $x+1, y, z$ ; (ii)  $-x+1, y-1/2, -z+3/2$ .