

Acta Crystallographica Section E

Structure Reports

Online

ISSN 1600-5368

N'-(3-Hydroxybenzylidene)-4-nitrobenzohydrazide

Chun-Hua Dai and Fu-Lin Mao*

Jiangsu Provincial Key Laboratory of Coastal Wetland Bioresources and Environmental Protection, Department of Chemistry, Yancheng Teachers University, Yancheng 224002, People's Republic of China

Correspondence e-mail: xpzhougroup@163.com

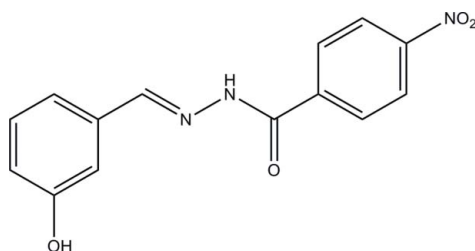
Received 18 October 2010; accepted 25 October 2010

Key indicators: single-crystal X-ray study; $T = 298$ K; mean $\sigma(\text{C}-\text{C}) = 0.002$ Å; R factor = 0.044; wR factor = 0.119; data-to-parameter ratio = 14.1.

The title molecule, $\text{C}_{14}\text{H}_{11}\text{N}_3\text{O}_4$, is approximately planar, with an interplanar angle between the two benzene rings of 5.8 (2°). In the crystal, four molecules are linked by an $R_4^4(12)$ motif with pairs of strong $\text{O}-\text{H}\cdots\text{O}$ and $\text{N}-\text{H}\cdots\text{O}$ hydrogen bonds. The motif is situated about the crystallographic centres of symmetry and it is composed of two pairs of parallel molecules. This quadruplet of molecules is further extended by symmetry-equivalent hydrogen bonds to form layers parallel to the $(10\bar{1})$ plane. In addition to the hydrogen bonds, there is also a weak $\pi-\pi$ interaction between the benzene rings.

Related literature

For medical applications of hydrazones, see: Ajani *et al.* (2010); Angelusiu *et al.* (2010); Zhang *et al.* (2010). For related structures, see: Ahmad *et al.* (2010); Huang & Wu (2010); Ji & Lu (2010); Khaledi *et al.* (2010); Singh & Singh (2010); Zhou & Yang (2010). For background to hydrogen bonds, see: Desiraju & Steiner (1999). For hydrogen-bonding motifs, see: Etter *et al.* (1990). *PLATON* (Spek, 2009) was used to analyse the $\pi-\pi$ interactions.



Experimental

Crystal data

$\text{C}_{14}\text{H}_{11}\text{N}_3\text{O}_4$
 $M_r = 285.26$
 Monoclinic, $P2_1/n$
 $a = 9.987$ (3) Å
 $b = 8.967$ (3) Å
 $c = 15.108$ (4) Å
 $\beta = 106.560$ (3°)
 $V = 1296.8$ (6) Å³
 $Z = 4$
 Mo $K\alpha$ radiation
 $\mu = 0.11$ mm⁻¹
 $T = 298$ K
 $0.13 \times 0.10 \times 0.10$ mm

Data collection

Bruker SMART 1000 CCD diffractometer
 Absorption correction: multi-scan (*SADABS*; Bruker, 2001)
 $T_{\min} = 0.986$, $T_{\max} = 0.989$
 6579 measured reflections
 2768 independent reflections
 1787 reflections with $I > 2\sigma(I)$
 $R_{\text{int}} = 0.028$

Refinement

$R[F^2 > 2\sigma(F^2)] = 0.044$
 $wR(F^2) = 0.119$
 $S = 1.03$
 2768 reflections
 197 parameters
 H atoms treated by a mixture of independent and constrained refinement
 $\Delta\rho_{\text{max}} = 0.21$ e Å⁻³
 $\Delta\rho_{\text{min}} = -0.17$ e Å⁻³

Table 1

Hydrogen-bond geometry (Å, °).

$D-H\cdots A$	$D-H$	$H\cdots A$	$D\cdots A$	$D-H\cdots A$
$\text{N2}-\text{H2}\cdots\text{O1}^i$	0.91 (2)	2.11 (2)	2.931 (2)	149.3 (16)
$\text{O1}-\text{H1}\cdots\text{O2}^{ii}$	0.85 (2)	1.82 (2)	2.6573 (17)	167 (2)

Symmetry codes: (i) $x + \frac{1}{2}, -y + \frac{1}{2}, z + \frac{1}{2}$; (ii) $-x - \frac{1}{2}, y - \frac{1}{2}, -z + \frac{3}{2}$.

Table 2

Overview of $\pi-\pi$ ring interactions in the structure.

C_{g1} and C_{g2} are the centroids of the C1–C6 and C9–C14 benzene rings, respectively.

Centroid–centroid	Distance (Å)	Symmetry code
$C_{g1}-C_{g2}$	3.6803 (16)	$1 - x, -y, 1 - z$

Data collection: *SMART* (Bruker, 2007); cell refinement: *SAINT* (Bruker, 2007); data reduction: *SAINT*; program(s) used to solve structure: *SHELXTL* (Sheldrick, 2008); program(s) used to refine structure: *SHELXTL*; molecular graphics: *SHELXTL*; software used to prepare material for publication: *SHELXTL*.

The authors acknowledge the Jiangsu Provincial Key Laboratory of Coastal Wetland Bioresources and Environmental Protection for open financial support (project No. JLCBE07026).

Supplementary data and figures for this paper are available from the IUCr electronic archives (Reference: FB2226).

References

- Ahmad, T., Zia-ur-Rehman, M., Siddiqui, H. L., Mahmud, S. & Parvez, M. (2010). *Acta Cryst.* **E66**, o1022.
 Ajani, O. O., Obafemi, C. A., Nwinyi, O. C. & Akinpelu, D. A. (2010). *Bioorg. Med. Chem.* **18**, 214–221.

- Angelusiu, M. V., Barbuceanu, S. F., Draghici, C. & Almajan, G. L. (2010). *Eur. J. Med. Chem.* **45**, 2055–2062.
- Bruker (2001). *SADABS*. Bruker AXS Inc., Madison, Wisconsin, USA.
- Bruker (2007). *SMART* and *SAINT*. Bruker AXS Inc., Madison, Wisconsin, USA.
- Desiraju, G. R. & Steiner, T. (1999). *The Weak Hydrogen Bond in Structural Chemistry and Biology*, p. 13. New York: Oxford University Press Inc.
- Etter, M. C., MacDonald, J. C. & Bernstein, J. (1990). *Acta Cryst.* **B46**, 256–262.
- Huang, H.-T. & Wu, H.-Y. (2010). *Acta Cryst.* **E66**, o2729–o2730.
- Ji, X.-H. & Lu, J.-F. (2010). *Acta Cryst.* **E66**, o1514.
- Khaledi, H., Alhadi, A. A., Mohd Ali, H., Robinson, W. T. & Abdulla, M. A. (2010). *Acta Cryst.* **E66**, o105–o106.
- Sheldrick, G. M. (2008). *Acta Cryst.* **A64**, 112–122.
- Singh, V. P. & Singh, S. (2010). *Acta Cryst.* **E66**, o1172.
- Spek, A. L. (2009). *Acta Cryst.* **D65**, 148–155.
- Zhang, Y.-H., Zhang, L., Liu, L., Guo, J.-X., Wu, D.-L., Xu, G.-C., Wang, X.-H. & Jia, D.-Z. (2010). *Inorg. Chim. Acta*, **363**, 289–293.
- Zhou, C.-S. & Yang, T. (2010). *Acta Cryst.* **E66**, o290.

supporting information

Acta Cryst. (2010). E66, o3004–o3005 [https://doi.org/10.1107/S1600536810043564]

N'*-(3-Hydroxybenzylidene)-4-nitrobenzohydrazide*Chun-Hua Dai and Fu-Lin Mao****S1. Comment**

In the last few months, a number of hydrazone compounds have been reported for their medical applications (Ajani *et al.*, 2010; Angelusiu *et al.*, 2010; Zhang *et al.*, 2010). Recent structure analyses of some members of this family of compounds have also been reported (Ahmad *et al.*, 2010; Huang & Wu, 2010; Ji & Lu, 2010; Khaledi *et al.*, 2010; Singh & Singh, 2010; Zhou & Yang, 2010). In this paper, we report the structure of the new hydrazone compound, *N'*-(3-hydroxybenzylidene)-4-nitrobenzohydrazide.

The title molecule is shown in Fig. 1. The molecule is approximately planar, with the interplanar angle between the two benzene rings equal to 5.8 (2)°. The bond lengths and angles are comparable with the hydrazone compounds cited above.

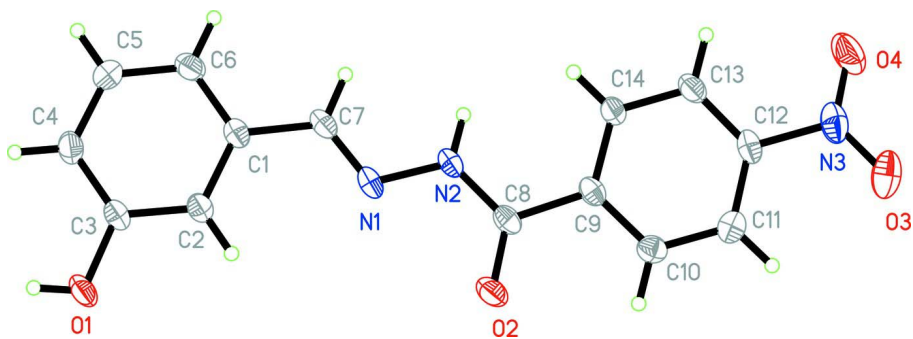
Four title molecules are linked by the motif $R_4^4(12)$ (Etter *et al.*, 1990) with pairs of strong O—H...O and strong N—H...O hydrogen bonds (Desiraju & Steiner, 1999). For the hydrogen bonds, see Table 1. The motif $R_4^4(12)$ is situated about the crystallographic centres of symmetry with the Wyckoff position 2c for the present setting. This motif is composed of two pairs of parallel molecules. This quadruplet of the title molecules is further extended by the symmetry equivalent H-bonds into the layers parallel to the planes (10 $\bar{1}$). In addition to the hydrogen bonds there is also a weak π -electron ring– π -electron ring interaction (Table 2) between the benzene rings in the structure (Spek, 2009).

S2. Experimental

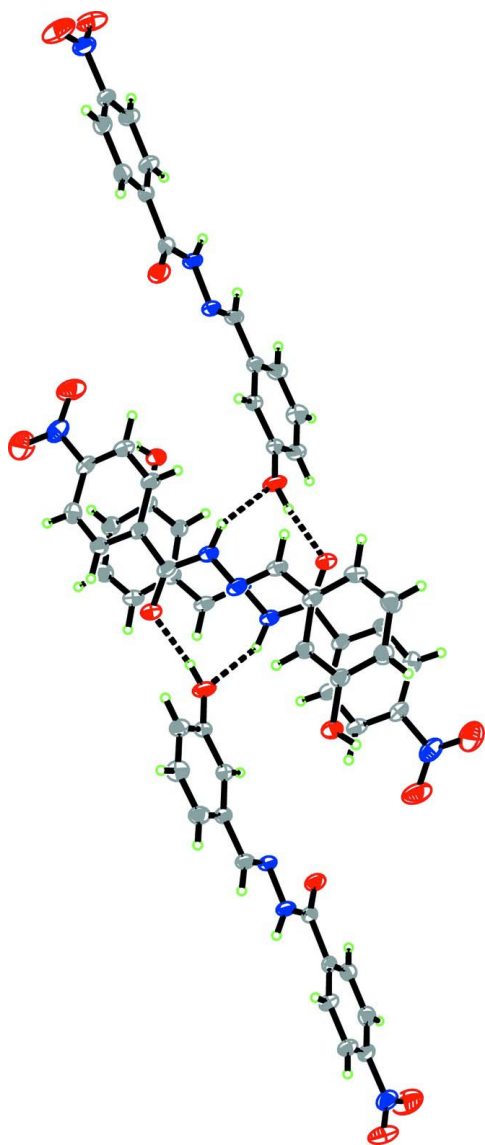
4-Nitrobenzohydrazide (0.181 g, 1 mmol) and 3-hydroxybenzaldehyde (0.122 g, 1 mmol) were mixed in 50 ml of methanol at room temperature. The mixture was stirred at room temperature for 30 min to give a yellow solution of the product. After keeping the above solution in air for 5 d, yellow block-shaped crystals with average size of 0.1 mm \times 0.2 mm \times 0.2 mm developed.

S3. Refinement

All the H atoms were discernible in the difference electron density maps. However, the aryl H atoms were positioned into idealized positions and refined in riding atom approximation. The used constraints: C—H = 0.93 Å; $U_{\text{iso}}(\text{H}) = 1.2U_{\text{eq}}(\text{C})$. The positional parameters of the H atoms H1 and H2 involved in the strong hydrogen bonds were refined freely, however, with the constraints of the displacement parameters $U_{\text{iso}}(\text{H}) = 1.5U_{\text{eq}}(\text{O or N})$.

**Figure 1**

The title molecule showing 30% probability displacement ellipsoids and the atomic numbering scheme.

**Figure 2**

A quadruplet of the title molecules forming the motif $R_4^4(12)$. Intermolecular interactions are drawn as dashed lines. N (blue), O (red), C (grey), H (green).

N'-(3-Hydroxybenzylidene)-4-nitrobenzohydrazide*Crystal data*C₁₄H₁₁N₃O₄ $M_r = 285.26$ Monoclinic, $P2_1/n$

Hall symbol: -P 2yn

 $a = 9.987(3) \text{ \AA}$ $b = 8.967(3) \text{ \AA}$ $c = 15.108(4) \text{ \AA}$ $\beta = 106.560(3)^\circ$ $V = 1296.8(6) \text{ \AA}^3$ $Z = 4$ $F(000) = 592$ $D_x = 1.461 \text{ Mg m}^{-3}$ Mo $K\alpha$ radiation, $\lambda = 0.71073 \text{ \AA}$

Cell parameters from 1436 reflections

 $\theta = 2.7\text{--}26.3^\circ$ $\mu = 0.11 \text{ mm}^{-1}$ $T = 298 \text{ K}$

Block, yellow

 $0.13 \times 0.10 \times 0.10 \text{ mm}$ *Data collection*

Bruker SMART 1000 CCD

diffractometer

Radiation source: fine-focus sealed tube

Graphite monochromator

 ω scans

Absorption correction: multi-scan

(SADABS; Bruker, 2001)

 $T_{\min} = 0.986$, $T_{\max} = 0.989$

6579 measured reflections

2768 independent reflections

1787 reflections with $I > 2\sigma(I)$ $R_{\text{int}} = 0.028$ $\theta_{\max} = 27.0^\circ$, $\theta_{\min} = 2.2^\circ$ $h = -11 \rightarrow 12$ $k = -11 \rightarrow 10$ $l = -18 \rightarrow 16$ *Refinement*Refinement on F^2

Least-squares matrix: full

 $R[F^2 > 2\sigma(F^2)] = 0.044$ $wR(F^2) = 0.119$ $S = 1.03$

2768 reflections

197 parameters

0 restraints

38 constraints

Primary atom site location: structure-invariant

direct methods

Secondary atom site location: difference Fourier map

Hydrogen site location: difference Fourier map

H atoms treated by a mixture of independent and constrained refinement

 $w = 1/[\sigma^2(F_o^2) + (0.0537P)^2 + 0.0632P]$ where $P = (F_o^2 + 2F_c^2)/3$ $(\Delta/\sigma)_{\max} < 0.001$ $\Delta\rho_{\max} = 0.21 \text{ e \AA}^{-3}$ $\Delta\rho_{\min} = -0.17 \text{ e \AA}^{-3}$ Extinction correction: *SHELXTL* (Sheldrick, 2008), $F_c^* = kF_c[1 + 0.001 \times F_c^2 \lambda^3 / \sin(2\theta)]^{-1/4}$

Extinction coefficient: 0.0088 (17)

Special details

Geometry. All e.s.d.'s (except the e.s.d. in the dihedral angle between two l.s. planes) are estimated using the full covariance matrix. The cell e.s.d.'s are taken into account individually in the estimation of e.s.d.'s in distances, angles and torsion angles; correlations between e.s.d.'s in cell parameters are only used when they are defined by crystal symmetry. An approximate (isotropic) treatment of cell e.s.d.'s is used for estimating e.s.d.'s involving l.s. planes.

Refinement. Refinement of F^2 against ALL reflections. The weighted R -factor wR and goodness of fit S are based on F^2 , conventional R -factors R are based on F , with F set to zero for negative F^2 . The threshold expression of $F^2 > \sigma(F^2)$ is used only for calculating R -factors(gt) etc. and is not relevant to the choice of reflections for refinement. R -factors based on F^2 are statistically about twice as large as those based on F , and R -factors based on ALL data will be even larger.

Fractional atomic coordinates and isotropic or equivalent isotropic displacement parameters (\AA^2)

	x	y	z	$U_{\text{iso}}^*/U_{\text{eq}}$
N1	0.00619 (14)	0.30350 (16)	0.94081 (9)	0.0406 (4)
N2	0.12358 (14)	0.36267 (16)	1.00310 (10)	0.0398 (4)

N3	0.69398 (17)	0.6801 (2)	1.24192 (14)	0.0589 (5)
O1	-0.42069 (13)	0.13866 (16)	0.68671 (8)	0.0555 (4)
H1	-0.493 (2)	0.089 (2)	0.6608 (16)	0.083*
O2	0.16825 (12)	0.52109 (15)	0.89819 (8)	0.0533 (4)
O3	0.76141 (18)	0.7733 (2)	1.21577 (13)	0.0993 (6)
O4	0.72752 (16)	0.62850 (19)	1.31937 (12)	0.0842 (6)
C1	-0.18157 (16)	0.12789 (18)	0.91821 (11)	0.0359 (4)
C2	-0.24225 (16)	0.16628 (19)	0.82649 (11)	0.0372 (4)
H2A	-0.2025	0.2405	0.7992	0.045*
C3	-0.36203 (17)	0.0939 (2)	0.77569 (11)	0.0385 (4)
C4	-0.42103 (19)	-0.0178 (2)	0.81556 (13)	0.0452 (5)
H4	-0.5005	-0.0675	0.7810	0.054*
C5	-0.3613 (2)	-0.0546 (2)	0.90643 (14)	0.0502 (5)
H5	-0.4015	-0.1290	0.9334	0.060*
C6	-0.24222 (18)	0.0171 (2)	0.95848 (13)	0.0449 (5)
H6	-0.2029	-0.0086	1.0201	0.054*
C7	-0.05675 (17)	0.20413 (19)	0.97439 (12)	0.0393 (4)
H7	-0.0222	0.1794	1.0365	0.047*
C8	0.19947 (16)	0.4687 (2)	0.97659 (12)	0.0369 (4)
C9	0.32783 (16)	0.52089 (18)	1.04872 (11)	0.0341 (4)
C10	0.39976 (17)	0.64059 (19)	1.02656 (12)	0.0400 (4)
H10	0.3676	0.6855	0.9689	0.048*
C11	0.51947 (18)	0.6937 (2)	1.09002 (13)	0.0438 (5)
H11	0.5681	0.7742	1.0756	0.053*
C12	0.56488 (16)	0.62500 (19)	1.17461 (12)	0.0410 (5)
C13	0.49633 (17)	0.50675 (19)	1.19882 (12)	0.0437 (5)
H13	0.5292	0.4624	1.2566	0.052*
C14	0.37696 (16)	0.45478 (19)	1.13512 (11)	0.0407 (5)
H14	0.3289	0.3745	1.1503	0.049*
H2	0.1392 (19)	0.341 (2)	1.0640 (14)	0.061*

Atomic displacement parameters (Å²)

	U^{11}	U^{22}	U^{33}	U^{12}	U^{13}	U^{23}
N1	0.0314 (7)	0.0502 (9)	0.0331 (8)	0.0010 (7)	-0.0021 (6)	-0.0075 (7)
N2	0.0340 (7)	0.0487 (9)	0.0295 (8)	-0.0019 (7)	-0.0027 (6)	-0.0017 (7)
N3	0.0419 (9)	0.0546 (11)	0.0707 (13)	-0.0056 (8)	0.0008 (9)	-0.0167 (10)
O1	0.0436 (8)	0.0827 (11)	0.0308 (7)	-0.0161 (7)	-0.0046 (6)	0.0000 (7)
O2	0.0411 (7)	0.0761 (10)	0.0353 (8)	0.0012 (6)	-0.0006 (6)	0.0098 (7)
O3	0.0719 (11)	0.1000 (14)	0.1113 (15)	-0.0481 (10)	0.0023 (10)	-0.0048 (11)
O4	0.0703 (10)	0.0935 (13)	0.0634 (11)	-0.0126 (9)	-0.0219 (8)	-0.0066 (10)
C1	0.0327 (9)	0.0371 (10)	0.0347 (10)	0.0047 (7)	0.0042 (7)	-0.0060 (8)
C2	0.0333 (9)	0.0449 (10)	0.0321 (10)	-0.0018 (7)	0.0074 (7)	-0.0039 (8)
C3	0.0331 (9)	0.0494 (11)	0.0302 (10)	-0.0001 (8)	0.0047 (7)	-0.0067 (8)
C4	0.0407 (10)	0.0486 (11)	0.0429 (11)	-0.0097 (8)	0.0064 (8)	-0.0084 (9)
C5	0.0558 (12)	0.0425 (11)	0.0509 (12)	-0.0084 (9)	0.0127 (10)	0.0050 (9)
C6	0.0484 (11)	0.0450 (11)	0.0354 (11)	0.0057 (8)	0.0022 (8)	0.0026 (8)
C7	0.0366 (9)	0.0434 (10)	0.0307 (10)	0.0063 (8)	-0.0021 (7)	-0.0041 (8)

C8	0.0303 (9)	0.0443 (10)	0.0332 (10)	0.0097 (8)	0.0041 (7)	-0.0018 (8)
C9	0.0273 (8)	0.0381 (9)	0.0347 (10)	0.0087 (7)	0.0053 (7)	-0.0034 (7)
C10	0.0402 (9)	0.0441 (11)	0.0367 (10)	0.0056 (8)	0.0126 (8)	0.0024 (8)
C11	0.0412 (10)	0.0405 (10)	0.0523 (12)	-0.0033 (8)	0.0174 (9)	-0.0041 (9)
C12	0.0285 (9)	0.0428 (10)	0.0464 (11)	0.0023 (8)	0.0021 (8)	-0.0098 (9)
C13	0.0379 (10)	0.0454 (11)	0.0395 (11)	0.0037 (8)	-0.0027 (8)	0.0022 (8)
C14	0.0342 (9)	0.0404 (10)	0.0406 (11)	-0.0016 (7)	-0.0002 (8)	0.0027 (8)

Geometric parameters (Å, °)

N1—C7	1.276 (2)	C4—H4	0.9300
N1—N2	1.3830 (18)	C5—C6	1.383 (3)
N2—C8	1.346 (2)	C5—H5	0.9300
N2—H2	0.91 (2)	C6—H6	0.9300
N3—O3	1.208 (2)	C7—H7	0.9300
N3—O4	1.213 (2)	C8—C9	1.501 (2)
N3—C12	1.481 (2)	C9—C10	1.385 (2)
O1—C3	1.365 (2)	C9—C14	1.390 (2)
O1—H1	0.85 (2)	C10—C11	1.386 (2)
O2—C8	1.229 (2)	C10—H10	0.9300
C1—C2	1.388 (2)	C11—C12	1.374 (2)
C1—C6	1.391 (2)	C11—H11	0.9300
C1—C7	1.462 (2)	C12—C13	1.367 (2)
C2—C3	1.385 (2)	C13—C14	1.382 (2)
C2—H2A	0.9300	C13—H13	0.9300
C3—C4	1.384 (2)	C14—H14	0.9300
C4—C5	1.372 (3)		
C7—N1—N2	114.55 (14)	C1—C6—H6	120.2
C8—N2—N1	120.57 (14)	N1—C7—C1	122.05 (16)
C8—N2—H2	120.2 (12)	N1—C7—H7	119.0
N1—N2—H2	118.3 (12)	C1—C7—H7	119.0
O3—N3—O4	123.56 (18)	O2—C8—N2	123.16 (15)
O3—N3—C12	117.62 (19)	O2—C8—C9	120.68 (16)
O4—N3—C12	118.81 (18)	N2—C8—C9	116.16 (15)
C3—O1—H1	111.7 (16)	C10—C9—C14	119.29 (15)
C2—C1—C6	119.55 (15)	C10—C9—C8	117.42 (15)
C2—C1—C7	121.39 (16)	C14—C9—C8	123.29 (16)
C6—C1—C7	119.04 (15)	C9—C10—C11	120.24 (16)
C3—C2—C1	119.96 (17)	C9—C10—H10	119.9
C3—C2—H2A	120.0	C11—C10—H10	119.9
C1—C2—H2A	120.0	C12—C11—C10	118.70 (17)
O1—C3—C4	121.66 (15)	C12—C11—H11	120.7
O1—C3—C2	117.95 (16)	C10—C11—H11	120.7
C4—C3—C2	120.37 (16)	C13—C12—C11	122.60 (15)
C5—C4—C3	119.48 (16)	C13—C12—N3	118.64 (17)
C5—C4—H4	120.3	C11—C12—N3	118.75 (17)
C3—C4—H4	120.3	C12—C13—C14	118.26 (16)

C4—C5—C6	120.98 (18)	C12—C13—H13	120.9
C4—C5—H5	119.5	C14—C13—H13	120.9
C6—C5—H5	119.5	C13—C14—C9	120.91 (17)
C5—C6—C1	119.64 (17)	C13—C14—H14	119.5
C5—C6—H6	120.2	C9—C14—H14	119.5

Hydrogen-bond geometry (Å, °)

<i>D</i> —H \cdots <i>A</i>	<i>D</i> —H	H \cdots <i>A</i>	<i>D</i> \cdots <i>A</i>	<i>D</i> —H \cdots <i>A</i>
N2—H2 \cdots O1 ⁱ	0.91 (2)	2.11 (2)	2.931 (2)	149.3 (16)
O1—H1 \cdots O2 ⁱⁱ	0.85 (2)	1.82 (2)	2.6573 (17)	167 (2)

Symmetry codes: (i) $x+1/2, -y+1/2, z+1/2$; (ii) $-x-1/2, y-1/2, -z+3/2$.