

Acta Crystallographica Section E

## Structure Reports

Online

ISSN 1600-5368

## 1-(2-Bromobenzoyl)-6,7-(methylenedioxy)isoquinoline

Supakit Achiwawanich,<sup>a</sup> Nisachon Khunnawutmanotham,<sup>b</sup> Supanna Techasakul,<sup>a</sup> Narongsuk Chaichit<sup>c</sup> and Sutatip Siripaisarnpipat<sup>a\*</sup>

<sup>a</sup>Center of Excellence in Functional Materials, Department of Chemistry, Faculty of Science, Kasetsart University, Bangkok 10903, Thailand, <sup>b</sup>Chulabhorn Research Institute, Vibhavadee–Rangsit Highway, Laksi, Bangkok 10210, Thailand., and <sup>c</sup>Department of Physics, Faculty of Science, Thammasart University, Vibhavadee–Rangsit Highway, Bangkok, Thailand.

Correspondence e-mail: fscists@ku.ac.th

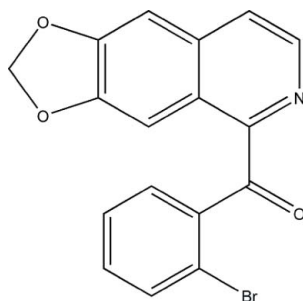
Received 18 November 2010; accepted 7 December 2010

Key indicators: single-crystal X-ray study;  $T = 298$  K; mean  $\sigma(\text{C}–\text{C}) = 0.004$  Å;  $R$  factor = 0.044;  $wR$  factor = 0.130; data-to-parameter ratio = 13.8.

In the title molecule,  $\text{C}_{17}\text{H}_{10}\text{BrNO}_3$ , the mean planes of tricycle and bromophenyl fragments form a dihedral angle of  $75.5$  (1)°. In the crystal,  $\pi$ – $\pi$  interactions [centroid–centroid distances =  $3.556$  (2) and  $3.898$  (8) Å] between the isoquinoline systems link molecules into stacks parallel to the  $a$  axis. The crystal packing also exhibits weak intermolecular C–H···O hydrogen bonds.

## Related literature

The title compound was been obtained during our work on the synthesis of oxoaporphine from isoquinoline for use as a substrate for coupling reactions to obtain an oxoaporphine product, see: Cuny (2004); Lafrance *et al.* (2004). For related structures, see: Orito *et al.* (2000).



## Experimental

## Crystal data

$\text{C}_{17}\text{H}_{10}\text{BrNO}_3$   
 $M_r = 356.17$   
 Triclinic,  $P\bar{1}$   
 $a = 7.6152$  (6) Å  
 $b = 7.8130$  (6) Å  
 $c = 12.0454$  (9) Å  
 $\alpha = 98.339$  (2)°  
 $\beta = 94.982$  (1)°  
 $\gamma = 100.264$  (2)°  
 $V = 693.06$  (9) Å<sup>3</sup>  
 $Z = 2$   
 Mo  $K\alpha$  radiation  
 $\mu = 2.98$  mm<sup>-1</sup>  
 $T = 298$  K  
 $0.16 \times 0.13 \times 0.11$  mm

## Data collection

Bruker SMART CCD area-detector diffractometer  
 3157 measured reflections  
 2742 independent reflections  
 2276 reflections with  $I > 2\sigma(I)$   
 $R_{\text{int}} = 0.015$

## Refinement

$R[F^2 > 2\sigma(F^2)] = 0.044$   
 $wR(F^2) = 0.130$   
 $S = 1.04$   
 2742 reflections  
 199 parameters  
 H-atom parameters constrained  
 $\Delta\rho_{\text{max}} = 0.64$  e Å<sup>-3</sup>  
 $\Delta\rho_{\text{min}} = -0.76$  e Å<sup>-3</sup>

Table 1

Hydrogen-bond geometry (Å, °).

$D–H\cdots A$	$D–H$	$H\cdots A$	$D\cdots A$	$D–H\cdots A$
$\text{C9}–\text{H9A}\cdots\text{O3}^i$	0.93	2.58	3.239 (3)	128

Symmetry code: (i)  $x, y - 1, z$ .

Data collection: *SMART* (Bruker, 2007); cell refinement: *SAINT* (Bruker, 2007); data reduction: *SAINT*; program(s) used to solve structure: *SHELXS97* (Sheldrick, 2008); program(s) used to refine structure: *SHELXL97* (Sheldrick, 2008); molecular graphics: *XP* in *SHELXTL* (Sheldrick, 2008); software used to prepare material for publication: *SHELXL97*.

The authors thank the Chulabhorn Research Institute and the Department of Chemistry, Faculty of Science, Kasetsart University, for financial support.

Supplementary data and figures for this paper are available from the IUCr electronic archives (Reference: CV5003).

## References

- Bruker (2007). *SMART* and *SAINT*. Bruker AXS Inc., Madison, Wisconsin, USA.  
 Cuny, G. D. (2004). *Tetrahedron Lett.* **45**, 5167–5170.  
 Lafrance, M., Blaquiere, N. & Fagnou, K. (2004). *Chem. Commun.* pp. 2874–2875.  
 Orito, K., Uchiito, S., Satoh, Y., Tatsuzawa, T., Harada, R. & Tokuda, M. (2000). *Org. Lett.* **2**, 307–310.  
 Sheldrick, G. M. (2008). *Acta Cryst.* **A64**, 112–122.

## supporting information

*Acta Cryst.* (2011). E67, o112 [https://doi.org/10.1107/S1600536810051329]

**1-(2-Bromobenzoyl)-6,7-(methylenedioxy)isoquinoline**

**Supakit Achiwawanich, Nisachon Khunnawutmanotham, Supanna Techasakul, Narongsuk Chaichit and Sutatip Siripaisarnpipat**

**S1. Comment**

The title compound (I) has been obtained in the framework of our work directed to the synthesis of oxoaporphine from isoquinoline to use it as a substrate for coupling reaction to reach an oxoaporphine product (Cuny *et al.*, 2004; Lafrance *et al.*, 2004).

In (I) (Fig. 1), all bond lengths and angles are normal and comparable with those observed in related compounds (Orito *et al.*, 2000). The C11—O3 bond length is 1.210 (3) Å - typical for carbonyl group. The mean planes of tricycle and bromophenyl fragments form a dihedral angle of 75.5 (1)°. The C5-C10-C11-C12 torsion angle is 146.1 (3)°.

In the crystal structure, weak intermolecular  $\pi$ - $\pi$  interactions between the isoquinoline systems (Table 1) link the molecules into stacks parallel to the axis *a*. The crystal packing exhibits also weak intermolecular C—H $\cdots$ O hydrogen bonds (Table 2).

**S2. Experimental**

The title compound was synthesized from piperonal in five steps. The 3,4-methylenedioxy piperonal was converted into phenylethylamine by the reaction with CH<sub>3</sub>NO<sub>2</sub>, NH<sub>4</sub>OAc and acetic acid at 90°C for 2 h. The phenylethylamine was then treated with 4-nitrobenzenesulfonyl chloride at room temperature for 40 h yielding sulfonamide. The sulfonamide further reacted with glyoxal compound at room temperature for 46 h. The resulting product, tetrahydroisoquinoline, was dehydrogenated under basic condition giving the title compound as pale yellow needles.

**S3. Refinement**

All H atoms were geometrically positioned (C—H 0.93-0.97 Å), and refined as riding, with  $U_{\text{iso}}(\text{H}) = 1.2-1.5 U_{\text{eq}}$  of the parent atom.

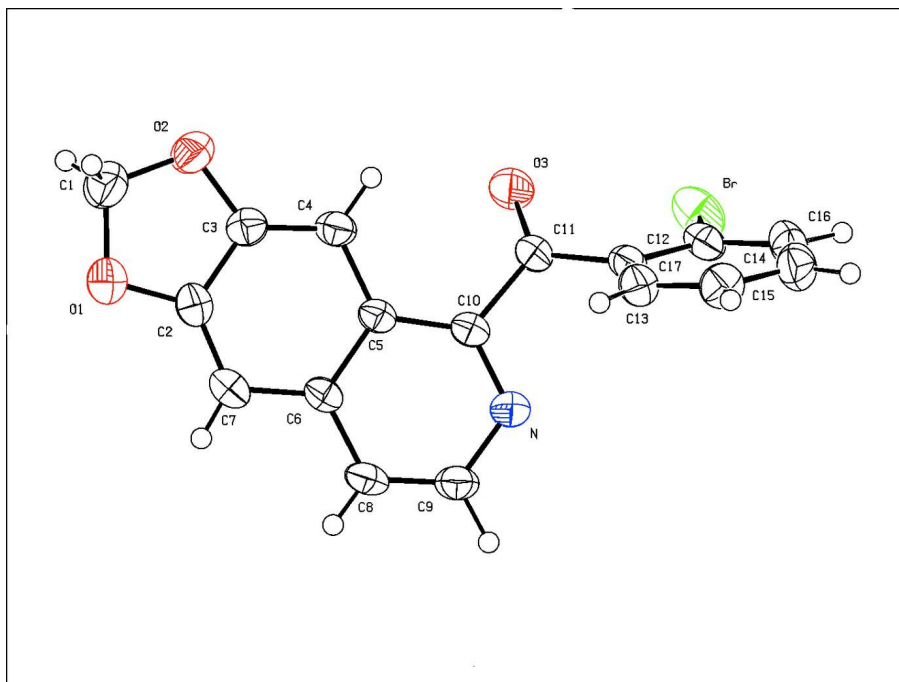


Figure 1

The molecular structure of (I) showing the atomic numbering and 50% probability displacement ellipsoids.

**(2-Bromophenyl)(2H-naphtho[2,3-d][1,3]dioxol-5-yl)methanone**

*Crystal data*

$C_{17}H_{10}BrNO_3$

$M_r = 356.17$

Triclinic,  $P\bar{1}$

$a = 7.6152$  (6) Å

$b = 7.8130$  (6) Å

$c = 12.0454$  (9) Å

$\alpha = 98.339$  (2)°

$\beta = 94.982$  (1)°

$\gamma = 100.264$  (2)°

$V = 693.06$  (9) Å<sup>3</sup>

$Z = 2$

$F(000) = 356$

$D_x = 1.707$  Mg m<sup>-3</sup>

Mo  $K\alpha$  radiation,  $\lambda = 0.71073$  Å

Cell parameters from 25 reflections

$\theta = 25\text{--}35^\circ$

$\mu = 2.98$  mm<sup>-1</sup>

$T = 298$  K

Needle, colourless

$0.16 \times 0.13 \times 0.11$  mm

*Data collection*

Bruker SMART CCD area-detector  
diffractometer

Radiation source: fine-focus sealed tube

Graphite monochromator

phi and  $\omega$  scans

3157 measured reflections

2742 independent reflections

2276 reflections with  $I > 2\sigma(I)$

$R_{\text{int}} = 0.015$

$\theta_{\text{max}} = 30.5^\circ$ ,  $\theta_{\text{min}} = 2.7^\circ$

$h = -10 \rightarrow 7$

$k = -11 \rightarrow 9$

$l = -16 \rightarrow 14$

*Refinement*

Refinement on  $F^2$

Least-squares matrix: full

$R[F^2 > 2\sigma(F^2)] = 0.044$

$wR(F^2) = 0.130$

$S = 1.04$

2742 reflections

199 parameters

0 restraints

Primary atom site location: structure-invariant  
direct methods  
Secondary atom site location: difference Fourier  
map  
Hydrogen site location: inferred from  
neighbouring sites

H-atom parameters constrained  
 $w = 1/[\sigma^2(F_o^2) + (0.0873P)^2 + 0.147P]$   
where  $P = (F_o^2 + 2F_c^2)/3$   
 $(\Delta/\sigma)_{\max} = 0.001$   
 $\Delta\rho_{\max} = 0.64 \text{ e } \text{\AA}^{-3}$   
 $\Delta\rho_{\min} = -0.76 \text{ e } \text{\AA}^{-3}$

*Special details*

**Geometry.** All e.s.d.'s (except the e.s.d. in the dihedral angle between two l.s. planes) are estimated using the full covariance matrix. The cell e.s.d.'s are taken into account individually in the estimation of e.s.d.'s in distances, angles and torsion angles; correlations between e.s.d.'s in cell parameters are only used when they are defined by crystal symmetry. An approximate (isotropic) treatment of cell e.s.d.'s is used for estimating e.s.d.'s involving l.s. planes.

**Refinement.** Refinement of  $F^2$  against ALL reflections. The weighted  $R$ -factor  $wR$  and goodness of fit  $S$  are based on  $F^2$ , conventional  $R$ -factors  $R$  are based on  $F$ , with  $F$  set to zero for negative  $F^2$ . The threshold expression of  $F^2 > \sigma(F^2)$  is used only for calculating  $R$ -factors(gt) *etc.* and is not relevant to the choice of reflections for refinement.  $R$ -factors based on  $F^2$  are statistically about twice as large as those based on  $F$ , and  $R$ -factors based on ALL data will be even larger.

*Fractional atomic coordinates and isotropic or equivalent isotropic displacement parameters ( $\text{\AA}^2$ )*

	<i>x</i>	<i>y</i>	<i>z</i>	$U_{\text{iso}}^*/U_{\text{eq}}$
Br	0.29325 (5)	0.84480 (4)	0.65647 (3)	0.05585 (17)
O1	1.0229 (3)	0.6977 (3)	1.29657 (19)	0.0484 (6)
O2	1.0035 (3)	0.9486 (3)	1.2189 (2)	0.0489 (6)
O3	0.5942 (4)	0.8829 (3)	0.8581 (2)	0.0533 (6)
N	0.5871 (4)	0.4413 (3)	0.8070 (2)	0.0372 (5)
C1	1.0794 (5)	0.8853 (4)	1.3122 (3)	0.0541 (9)
H1A	1.0405	0.9389	1.3813	0.065*
H1B	1.2094	0.9160	1.3184	0.065*
C2	0.9304 (4)	0.6499 (4)	1.1915 (2)	0.0352 (6)
C3	0.9177 (4)	0.8020 (3)	1.1432 (2)	0.0353 (6)
C4	0.8317 (4)	0.7975 (3)	1.0398 (2)	0.0358 (6)
H4A	0.8249	0.9001	1.0104	0.043*
C5	0.7512 (4)	0.6262 (3)	0.9773 (2)	0.0297 (5)
C6	0.7642 (4)	0.4726 (3)	1.0269 (2)	0.0307 (5)
C7	0.8554 (4)	0.4857 (3)	1.1363 (3)	0.0369 (6)
H7A	0.8636	0.3861	1.1689	0.044*
C8	0.6816 (4)	0.3074 (3)	0.9630 (2)	0.0375 (6)
H8A	0.6847	0.2048	0.9932	0.045*
C9	0.5975 (4)	0.2978 (3)	0.8574 (3)	0.0392 (6)
H9A	0.5441	0.1871	0.8174	0.047*
C10	0.6596 (4)	0.5985 (3)	0.8670 (2)	0.0322 (5)
C11	0.6251 (4)	0.7482 (3)	0.8073 (2)	0.0353 (6)
C12	0.6279 (4)	0.7207 (3)	0.6816 (2)	0.0330 (6)
C13	0.7726 (4)	0.6592 (4)	0.6371 (3)	0.0411 (7)
H13A	0.8574	0.6248	0.6850	0.049*
C14	0.7927 (5)	0.6483 (4)	0.5236 (3)	0.0461 (7)
H14A	0.8929	0.6123	0.4961	0.055*
C15	0.6625 (5)	0.6914 (4)	0.4513 (3)	0.0491 (8)
H15A	0.6734	0.6807	0.3744	0.059*

C16	0.5171 (5)	0.7501 (4)	0.4921 (3)	0.0482 (8)
H16A	0.4299	0.7786	0.4429	0.058*
C17	0.5004 (4)	0.7668 (3)	0.6066 (3)	0.0372 (6)

*Atomic displacement parameters (Å<sup>2</sup>)*

	$U^{11}$	$U^{22}$	$U^{33}$	$U^{12}$	$U^{13}$	$U^{23}$
Br	0.0385 (2)	0.0639 (2)	0.0752 (3)	0.02005 (16)	0.00774 (18)	0.03108 (17)
O1	0.0518 (15)	0.0501 (11)	0.0419 (13)	0.0091 (10)	-0.0035 (10)	0.0090 (8)
O2	0.0525 (14)	0.0400 (10)	0.0478 (13)	0.0053 (9)	-0.0099 (10)	0.0000 (8)
O3	0.080 (2)	0.0352 (10)	0.0486 (13)	0.0286 (11)	0.0000 (11)	0.0041 (8)
N	0.0442 (14)	0.0287 (10)	0.0383 (13)	0.0081 (9)	0.0022 (10)	0.0042 (8)
C1	0.055 (2)	0.0509 (17)	0.052 (2)	0.0093 (15)	-0.0082 (15)	0.0023 (13)
C2	0.0324 (14)	0.0433 (13)	0.0326 (14)	0.0107 (11)	0.0065 (11)	0.0095 (10)
C3	0.0314 (14)	0.0341 (11)	0.0396 (15)	0.0059 (10)	0.0034 (11)	0.0043 (9)
C4	0.0365 (15)	0.0280 (10)	0.0431 (16)	0.0063 (10)	0.0019 (11)	0.0082 (9)
C5	0.0312 (13)	0.0267 (10)	0.0336 (13)	0.0083 (9)	0.0074 (10)	0.0076 (8)
C6	0.0318 (14)	0.0287 (10)	0.0347 (14)	0.0072 (9)	0.0089 (10)	0.0109 (8)
C7	0.0375 (16)	0.0368 (12)	0.0411 (16)	0.0098 (11)	0.0083 (12)	0.0166 (10)
C8	0.0454 (17)	0.0241 (10)	0.0459 (16)	0.0075 (10)	0.0103 (12)	0.0115 (9)
C9	0.0477 (18)	0.0257 (10)	0.0436 (16)	0.0058 (10)	0.0067 (12)	0.0048 (9)
C10	0.0348 (14)	0.0271 (10)	0.0367 (14)	0.0087 (9)	0.0049 (10)	0.0079 (9)
C11	0.0416 (16)	0.0304 (11)	0.0356 (15)	0.0103 (10)	0.0008 (11)	0.0092 (9)
C12	0.0339 (14)	0.0273 (10)	0.0379 (14)	0.0055 (9)	-0.0004 (11)	0.0095 (8)
C13	0.0434 (18)	0.0409 (13)	0.0393 (16)	0.0088 (12)	0.0000 (12)	0.0092 (10)
C14	0.0449 (19)	0.0476 (15)	0.0464 (19)	0.0103 (13)	0.0082 (14)	0.0064 (12)
C15	0.054 (2)	0.0549 (17)	0.0370 (17)	0.0032 (15)	0.0047 (14)	0.0136 (12)
C16	0.0415 (18)	0.0573 (17)	0.0460 (19)	0.0030 (14)	-0.0057 (14)	0.0229 (13)
C17	0.0309 (14)	0.0344 (12)	0.0473 (17)	0.0035 (10)	0.0005 (11)	0.0166 (10)

*Geometric parameters (Å, °)*

Br—C17	1.903 (3)	C6—C7	1.417 (4)
O1—C2	1.361 (4)	C7—H7A	0.9300
O1—C1	1.432 (4)	C8—C9	1.360 (4)
O2—C3	1.378 (3)	C8—H8A	0.9300
O2—C1	1.411 (4)	C9—H9A	0.9300
O3—C11	1.210 (3)	C10—C11	1.509 (3)
N—C10	1.330 (3)	C11—C12	1.501 (4)
N—C9	1.361 (3)	C12—C13	1.396 (5)
C1—H1A	0.9700	C12—C17	1.398 (4)
C1—H1B	0.9700	C13—C14	1.381 (5)
C2—C7	1.356 (4)	C13—H13A	0.9300
C2—C3	1.411 (4)	C14—C15	1.382 (5)
C3—C4	1.349 (4)	C14—H14A	0.9300
C4—C5	1.438 (3)	C15—C16	1.374 (6)
C4—H4A	0.9300	C15—H15A	0.9300
C5—C10	1.414 (4)	C16—C17	1.385 (5)

C5—C6	1.431 (3)	C16—H16A	0.9300
C6—C8	1.412 (3)		
Cg1...Cg1 <sup>i</sup>	3.556 (2)	Cg1...Cg2 <sup>ii</sup>	3.898 (8)
C2—O1—C1	106.0 (2)	C6—C8—H8A	119.9
C3—O2—C1	106.2 (2)	C8—C9—N	123.6 (2)
C10—N—C9	117.2 (2)	C8—C9—H9A	118.2
O2—C1—O1	108.9 (2)	N—C9—H9A	118.2
O2—C1—H1A	109.9	N—C10—C5	124.7 (2)
O1—C1—H1A	109.9	N—C10—C11	112.6 (2)
O2—C1—H1B	109.9	C5—C10—C11	122.6 (2)
O1—C1—H1B	109.9	O3—C11—C12	121.7 (2)
H1A—C1—H1B	108.3	O3—C11—C10	121.5 (3)
C7—C2—O1	128.5 (3)	C12—C11—C10	116.8 (2)
C7—C2—C3	121.9 (3)	C13—C12—C17	117.7 (3)
O1—C2—C3	109.6 (2)	C13—C12—C11	118.7 (2)
C4—C3—O2	127.5 (3)	C17—C12—C11	123.4 (3)
C4—C3—C2	123.5 (2)	C14—C13—C12	121.5 (3)
O2—C3—C2	108.9 (2)	C14—C13—H13A	119.2
C3—C4—C5	116.7 (2)	C12—C13—H13A	119.2
C3—C4—H4A	121.6	C13—C14—C15	119.4 (3)
C5—C4—H4A	121.6	C13—C14—H14A	120.3
C10—C5—C6	116.8 (2)	C15—C14—H14A	120.3
C10—C5—C4	123.7 (2)	C16—C15—C14	120.4 (3)
C6—C5—C4	119.4 (2)	C16—C15—H15A	119.8
C8—C6—C7	121.2 (2)	C14—C15—H15A	119.8
C8—C6—C5	117.5 (2)	C15—C16—C17	120.0 (3)
C7—C6—C5	121.3 (2)	C15—C16—H16A	120.0
C2—C7—C6	117.1 (2)	C17—C16—H16A	120.0
C2—C7—H7A	121.5	C16—C17—C12	120.9 (3)
C6—C7—H7A	121.5	C16—C17—Br	117.6 (2)
C9—C8—C6	120.2 (2)	C12—C17—Br	121.5 (2)
C9—C8—H8A	119.9		
C3—O2—C1—O1	-5.7 (4)	C9—N—C10—C5	2.2 (5)
C2—O1—C1—O2	5.7 (4)	C9—N—C10—C11	-174.6 (3)
C1—O1—C2—C7	177.5 (3)	C6—C5—C10—N	-0.5 (5)
C1—O1—C2—C3	-3.5 (4)	C4—C5—C10—N	178.7 (3)
C1—O2—C3—C4	-177.3 (3)	C6—C5—C10—C11	175.9 (3)
C1—O2—C3—C2	3.5 (4)	C4—C5—C10—C11	-4.9 (5)
C7—C2—C3—C4	-0.1 (5)	N—C10—C11—O3	141.9 (3)
O1—C2—C3—C4	-179.2 (3)	C5—C10—C11—O3	-34.9 (5)
C7—C2—C3—O2	179.1 (3)	N—C10—C11—C12	-37.1 (4)
O1—C2—C3—O2	0.0 (4)	C5—C10—C11—C12	146.1 (3)
O2—C3—C4—C5	-179.5 (3)	O3—C11—C12—C13	131.7 (3)
C2—C3—C4—C5	-0.4 (5)	C10—C11—C12—C13	-49.3 (3)
C3—C4—C5—C10	-178.6 (3)	O3—C11—C12—C17	-42.9 (4)

C3—C4—C5—C6	0.5 (4)	C10—C11—C12—C17	136.1 (3)
C10—C5—C6—C8	-1.4 (4)	C17—C12—C13—C14	1.7 (4)
C4—C5—C6—C8	179.4 (3)	C11—C12—C13—C14	-173.3 (2)
C10—C5—C6—C7	179.1 (3)	C12—C13—C14—C15	-3.0 (4)
C4—C5—C6—C7	-0.2 (4)	C13—C14—C15—C16	2.1 (5)
O1—C2—C7—C6	179.4 (3)	C14—C15—C16—C17	0.2 (5)
C3—C2—C7—C6	0.5 (5)	C15—C16—C17—C12	-1.5 (4)
C8—C6—C7—C2	-179.9 (3)	C15—C16—C17—Br	-178.9 (2)
C5—C6—C7—C2	-0.3 (4)	C13—C12—C17—C16	0.6 (4)
C7—C6—C8—C9	-178.9 (3)	C11—C12—C17—C16	175.3 (2)
C5—C6—C8—C9	1.6 (5)	C13—C12—C17—Br	177.88 (19)
C6—C8—C9—N	0.1 (5)	C11—C12—C17—Br	-7.4 (3)
C10—N—C9—C8	-2.0 (5)		

Symmetry codes: (i)  $-x+1, -y+1, -z$ ; (ii)  $-x, -y+1, -z$ .

#### Hydrogen-bond geometry ( $\text{\AA}$ , $^\circ$ )

$D-H\cdots A$	$D-H$	$H\cdots A$	$D\cdots A$	$D-H\cdots A$
C9—H9A $\cdots$ O3 <sup>iii</sup>	0.93	2.58	3.239 (3)	128

Symmetry code: (iii)  $x, y-1, z$ .