

Acta Crystallographica Section E

Structure Reports

Online

ISSN 1600-5368

***rac*-4-[4-Cyano-2-(hydroxymethyl)-phenyl]-4-(4-fluorophenyl)-4-hydroxy-*N,N*-dimethylbutanaminium hemifumarate**

En-Ju Wang* and Guang-Ying Chen

Hainan Provincial Key Laboratory of Tropical Pharmaceutical Herb Chemistry, School of Chemistry and Chemical Engineering, Hainan Normal University, Haikou 571158, People's Republic of China

Correspondence e-mail: enjuwang@163.com

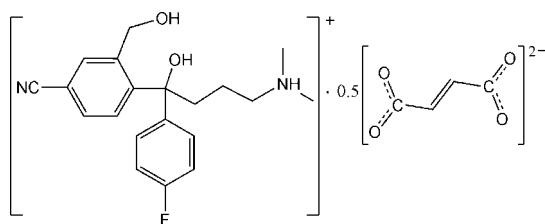
Received 21 November 2010; accepted 26 December 2010

Key indicators: single-crystal X-ray study; $T = 293$ K; mean $\sigma(\text{C}-\text{C}) = 0.003$ Å; disorder in main residue; R factor = 0.054; wR factor = 0.158; data-to-parameter ratio = 14.8.

In the title salt, $\text{C}_{20}\text{H}_{24}\text{FN}_2\text{O}_2^+ \cdot 0.5\text{C}_4\text{H}_2\text{O}_4^{2-}$, the fumarate anion is located on an inversion centre. In the cation, the two benzene rings are nearly perpendicular to each other, making a dihedral angle of 87.41 (10)°. The cation is linked to the anion by a bifurcated $\text{N}-\text{H} \cdots \text{O}$ hydrogen bond. Classical $\text{O}-\text{H} \cdots \text{O}$ and weak $\text{C}-\text{H} \cdots \text{F}$ hydrogen bonding is also present in the crystal structure. Three C atoms of the *N,N*-dimethylbutanaminium moiety are disordered over two sites with refined site occupancies of 0.466 (14) and 0.534 (14).

Related literature

For a pharmacological study of the title compound, see: Pollock (2001). For the synthesis, see: Boegeso (1987).



Experimental

Crystal data

$\text{C}_{20}\text{H}_{24}\text{FN}_2\text{O}_2^+ \cdot 0.5\text{C}_4\text{H}_2\text{O}_4^{2-}$
 $M_r = 400.44$
 Triclinic, $P\bar{1}$
 $a = 8.3312$ (9) Å
 $b = 8.8372$ (11) Å
 $c = 15.0396$ (13) Å
 $\alpha = 92.236$ (1)°
 $\beta = 102.681$ (2)°

$\gamma = 107.508$ (2)°
 $V = 1023.64$ (19) Å³
 $Z = 2$
 Mo $K\alpha$ radiation
 $\mu = 0.10$ mm⁻¹
 $T = 293$ K
 $0.50 \times 0.48 \times 0.47$ mm

Data collection

Bruker SMART CCD area-detector diffractometer
 7766 measured reflections
 4381 independent reflections
 3071 reflections with $I > 2\sigma(I)$
 $R_{\text{int}} = 0.016$

Refinement

$R[F^2 > 2\sigma(F^2)] = 0.054$
 $wR(F^2) = 0.158$
 $S = 1.06$
 4381 reflections

297 parameters
 H-atom parameters constrained
 $\Delta\rho_{\text{max}} = 0.80$ e Å⁻³
 $\Delta\rho_{\text{min}} = -0.29$ e Å⁻³

Table 1

Hydrogen-bond geometry (Å, °).

$D-\text{H} \cdots A$	$D-\text{H}$	$\text{H} \cdots A$	$D \cdots A$	$D-\text{H} \cdots A$
$\text{O1}-\text{H1} \cdots \text{O2}$	0.82	1.85	2.655 (2)	165
$\text{O2}-\text{H2} \cdots \text{O3}$	0.82	1.85	2.642 (3)	162
$\text{N1}-\text{H1A} \cdots \text{O4}^i$	0.91	2.30	3.152 (3)	155
$\text{N1}-\text{H1A} \cdots \text{O3}^i$	0.91	2.04	2.834 (3)	145
$\text{C2}-\text{H2A} \cdots \text{F1}^{ii}$	0.93	2.48	3.392 (3)	167

Symmetry codes: (i) $x - 1, y, z$; (ii) $x, y - 1, z$.

Data collection: *SMART* (Bruker, 2000); cell refinement: *SAINT* (Bruker, 2000); data reduction: *SAINT*; program(s) used to solve structure: *SHELXTL* (Sheldrick, 2008); program(s) used to refine structure: *SHELXTL*; molecular graphics: *SHELXTL*; software used to prepare material for publication: *SHELXTL*.

We are grateful for financial support from the Natural Science Foundation of Hainan Province, China (No. 808145).

Supplementary data and figures for this paper are available from the IUCr electronic archives (Reference: XU5099).

References

- Boegeso, K. P. (1987). US Patent 4 650 884.
 Bruker (2000). *SMART* and *SAINT*. Bruker AXS Inc., Madison, Wisconsin, USA.
 Pollock, B. G. (2001). *Expert Opin. Pharmacother.* **2**, 681–698.
 Sheldrick, G. M. (2008). *Acta Cryst.* **A64**, 112–122.

supporting information

Acta Cryst. (2011). E67, o284 [doi:10.1107/S1600536810054346]

rac*-4-[4-Cyano-2-(hydroxymethyl)phenyl]-4-(4-fluorophenyl)-4-hydroxy-*N,N*-dimethylbutanaminium hemifumarate*En-Ju Wang and Guang-Ying Chen****S1. Comment**

Rac-4-[4-Cyano-2-(hydroxymethyl)phenyl]-4-(4-fluorophenyl)-4-hydroxy-*N,N*-dimethylbutan-1-amine, known as citalopram diol, is a useful intermediate in the synthesis of citalopram that is an efficient antidepressant (Pollock, 2001). Ordinarily both of them are viscous oil and are very difficult to be crystallized. It is a strategy to combine them with all sorts of acid, so that crystal salt can be obtained. The crystal structure of fumaric acid salt of citalopram diol is reported here.

In the title salt, $(C_{20}H_{24}N_2O_2F)^+ \cdot 0.5(C_4H_2O_4)^{2-}$ (I) (Fig. 1), each carboxylic anion of the fumaric acid is involved in two hydrogen bonds and there is an inversion center at the centroid position of fumaric acid, which generate a double chain of citalopram diol linked by fumaric acid molecules (Fig.2). There is a C—H $\cdots\pi$ interaction between fluorobenzene moiety and benzonitrile moiety (Fig. 3). The dihedral angle between the two aromatic rings is 87.349 (7)°. The distance from H9 to the centroid of aromatic ring of benzonitrile moiety is 2.8372 (8) Å.

S2. Experimental

The compound was prepared according to the method of patent (Boegeso, 1987). The crystals suitable for single X-ray diffraction were obtained by slowly volatilizing the solution of a mixture of citalopram diol and fumaric acid (2:1 molar ratio) in ethanol.

S3. Refinement

Hydroxyl H atoms and ammonium H atom were located in a difference Fourier maps and refined with constraints of N—H = 0.91 and O—H = 0.82 Å, $U_{iso}(H) = 1.2U_{eq}(O,N)$. Other H atoms were positioned geometrically with C—H = 0.93-0.97 Å, $U_{iso}(H) = 1.5U_{eq}(C)$ for methyl and $1.2U_{eq}(C)$ for the others. The C16, C17 and C18 atoms were disordered over two sites, occupancies were refined to 0.466 (14):0.534 (14).

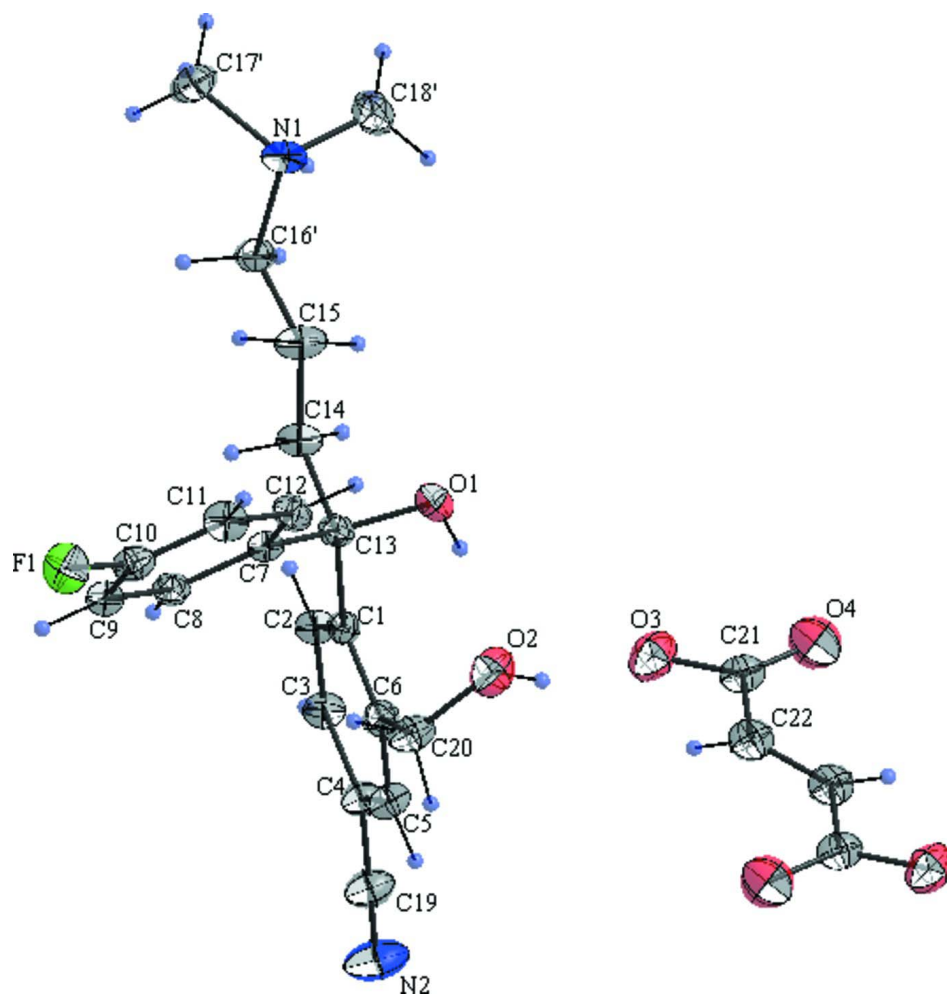


Figure 1

The molecular configuration and atom numbering scheme for (I). Displacement ellipsoids are drawn at the 30% probability level.

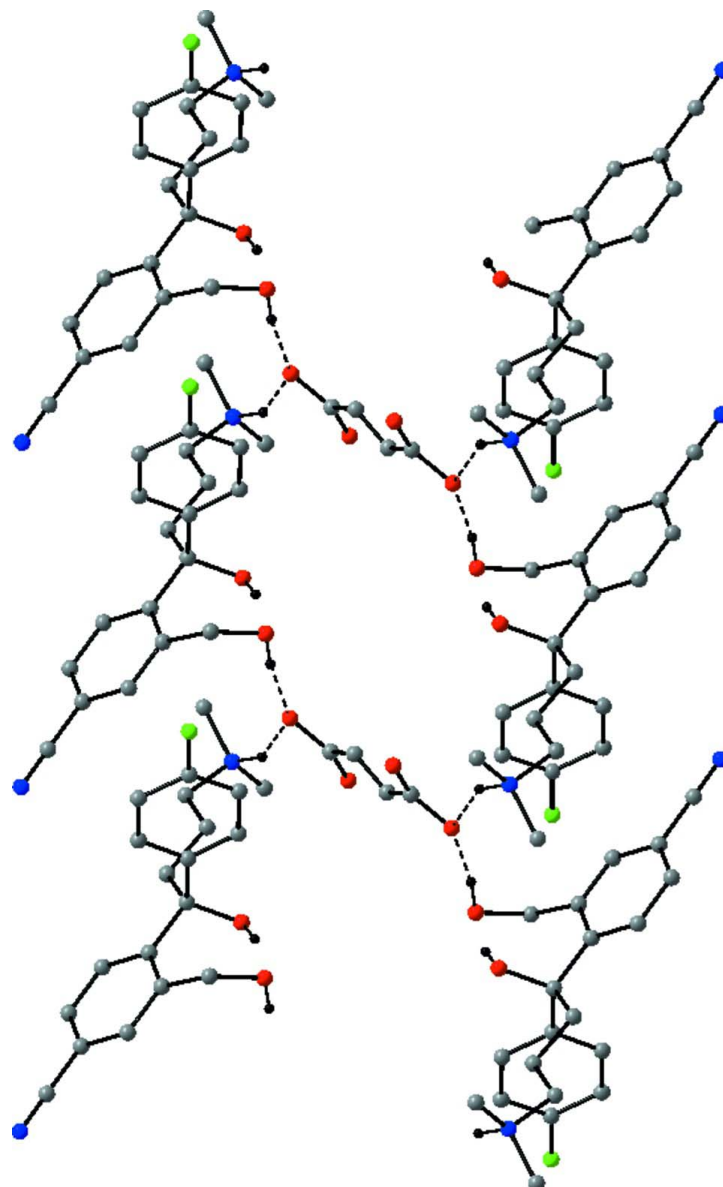
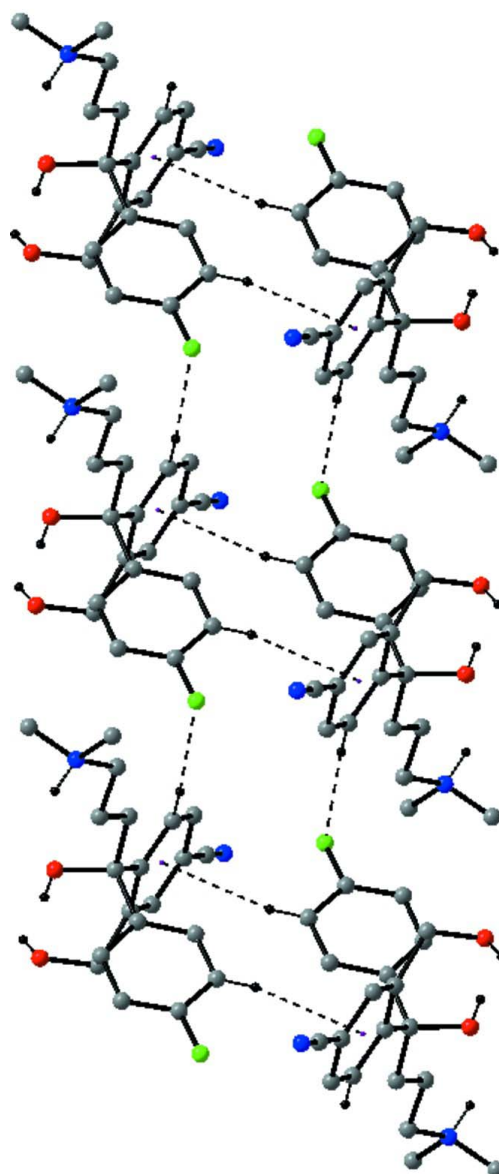


Figure 2

The partial packing diagram of (I), showing a double chain of citalopram diol linked by fumaric acid molecules. Hydrogen bonds are shown as dashed lines. H atoms bonded to C atoms have been omitted for clarity.

**Figure 3**

The partial packing diagram of (I), showing the C—H... π and C—H...F interactions. For clarity, some H atoms not involved in the motifs shown have been omitted.

***rac*-4-[4-Cyano-2-(hydroxymethyl)phenyl]-4-(4-fluorophenyl)-4-hydroxy- *N,N*-dimethylbutanaminium hemifumarate**

Crystal data

$C_{20}H_{24}FN_2O_2^+ \cdot 0.5C_4H_2O_4^{2-}$

$M_r = 400.44$

Triclinic, $P\bar{1}$

Hall symbol: $-P\ 1$

$a = 8.3312$ (9) Å

$b = 8.8372$ (11) Å

$c = 15.0396$ (13) Å

$\alpha = 92.236$ (1)°

$\beta = 102.681$ (2)°

$\gamma = 107.508$ (2)°

$V = 1023.64$ (19) Å³

$Z = 2$

$F(000) = 424$

$D_x = 1.299$ Mg m⁻³

Mo $K\alpha$ radiation, $\lambda = 0.71073 \text{ \AA}$
 Cell parameters from 5256 reflections
 $\theta = 1.5\text{--}25.2^\circ$
 $\mu = 0.10 \text{ mm}^{-1}$

$T = 293 \text{ K}$
 Block, colourless
 $0.50 \times 0.48 \times 0.47 \text{ mm}$

Data collection

Bruker SMART CCD area-detector
 diffractometer
 Radiation source: fine-focus sealed tube
 Graphite monochromator
 φ and ω scans
 7766 measured reflections
 4381 independent reflections

3071 reflections with $I > 2\sigma(I)$
 $R_{\text{int}} = 0.016$
 $\theta_{\text{max}} = 27.1^\circ$, $\theta_{\text{min}} = 1.4^\circ$
 $h = -10 \rightarrow 10$
 $k = -11 \rightarrow 11$
 $l = -19 \rightarrow 19$

Refinement

Refinement on F^2
 Least-squares matrix: full
 $R[F^2 > 2\sigma(F^2)] = 0.054$
 $wR(F^2) = 0.158$
 $S = 1.06$
 4381 reflections
 297 parameters
 0 restraints
 Primary atom site location: structure-invariant
 direct methods

Secondary atom site location: difference Fourier
 map
 Hydrogen site location: inferred from
 neighbouring sites
 H-atom parameters constrained
 $w = 1/[\sigma^2(F_o^2) + (0.0681P)^2 + 0.4116P]$
 where $P = (F_o^2 + 2F_c^2)/3$
 $(\Delta/\sigma)_{\text{max}} = 0.001$
 $\Delta\rho_{\text{max}} = 0.80 \text{ e \AA}^{-3}$
 $\Delta\rho_{\text{min}} = -0.29 \text{ e \AA}^{-3}$

Special details

Geometry. All e.s.d.'s (except the e.s.d. in the dihedral angle between two l.s. planes) are estimated using the full covariance matrix. The cell e.s.d.'s are taken into account individually in the estimation of e.s.d.'s in distances, angles and torsion angles; correlations between e.s.d.'s in cell parameters are only used when they are defined by crystal symmetry. An approximate (isotropic) treatment of cell e.s.d.'s is used for estimating e.s.d.'s involving l.s. planes.

Refinement. Refinement of F^2 against ALL reflections. The weighted R -factor wR and goodness of fit S are based on F^2 , conventional R -factors R are based on F , with F set to zero for negative F^2 . The threshold expression of $F^2 > \sigma(F^2)$ is used only for calculating R -factors(gt) *etc.* and is not relevant to the choice of reflections for refinement. R -factors based on F^2 are statistically about twice as large as those based on F , and R -factors based on ALL data will be even larger.

Fractional atomic coordinates and isotropic or equivalent isotropic displacement parameters (\AA^2)

	<i>x</i>	<i>y</i>	<i>z</i>	$U_{\text{iso}}^*/U_{\text{eq}}$	Occ. (<1)
F1	0.20769 (19)	0.79749 (15)	0.86453 (10)	0.0671 (4)	
N1	-0.2494 (2)	-0.04111 (19)	0.61890 (12)	0.0480 (4)	
H1A	-0.2346	0.0452	0.5868	0.058*	
N2	1.1468 (3)	0.2082 (3)	1.02194 (19)	0.0865 (8)	
O1	0.38654 (19)	0.25106 (19)	0.66277 (9)	0.0536 (4)	
H1	0.4688	0.3252	0.6562	0.080*	
O2	0.6756 (2)	0.4911 (2)	0.67399 (11)	0.0690 (5)	
H2	0.7266	0.4358	0.6545	0.104*	
O3	0.7715 (2)	0.2781 (2)	0.58894 (13)	0.0765 (5)	
O4	0.8536 (3)	0.1944 (2)	0.47374 (15)	0.0906 (6)	
C1	0.5496 (2)	0.2512 (2)	0.81662 (12)	0.0382 (4)	
C2	0.5520 (3)	0.1242 (2)	0.86801 (13)	0.0450 (4)	
H2A	0.4472	0.0468	0.8671	0.054*	

C3	0.7026 (3)	0.1076 (2)	0.92031 (14)	0.0479 (5)	
H3	0.6992	0.0202	0.9532	0.057*	
C4	0.8584 (3)	0.2230 (3)	0.92298 (14)	0.0482 (5)	
C5	0.8597 (3)	0.3513 (3)	0.87273 (15)	0.0505 (5)	
H5	0.9654	0.4280	0.8745	0.061*	
C6	0.7095 (2)	0.3695 (2)	0.82005 (13)	0.0445 (4)	
C7	0.3417 (2)	0.4110 (2)	0.78555 (12)	0.0374 (4)	
C8	0.3553 (2)	0.4536 (2)	0.87729 (13)	0.0414 (4)	
H8	0.3930	0.3925	0.9212	0.050*	
C9	0.3138 (3)	0.5849 (2)	0.90451 (14)	0.0460 (5)	
H9	0.3241	0.6138	0.9661	0.055*	
C10	0.2568 (3)	0.6718 (2)	0.83815 (15)	0.0470 (5)	
C11	0.2425 (3)	0.6358 (2)	0.74730 (15)	0.0510 (5)	
H11	0.2047	0.6978	0.7040	0.061*	
C12	0.2858 (3)	0.5040 (2)	0.72121 (14)	0.0477 (5)	
H12	0.2773	0.4775	0.6595	0.057*	
C13	0.3780 (2)	0.2592 (2)	0.75605 (12)	0.0405 (4)	
C14	0.2230 (2)	0.1135 (2)	0.75868 (15)	0.0481 (5)	
H14A	0.2482	0.0170	0.7430	0.058*	
H14B	0.2064	0.1117	0.8205	0.058*	
C15	0.0558 (3)	0.1151 (3)	0.69250 (17)	0.0589 (6)	
H15A	0.0034	0.1812	0.7216	0.071*	
H15B	0.0834	0.1619	0.6383	0.071*	
C16	-0.0679 (8)	-0.0449 (7)	0.6654 (7)	0.0476 (17)	0.466 (14)
H16A	-0.0737	-0.1014	0.7192	0.057*	0.466 (14)
H16B	-0.0279	-0.1029	0.6235	0.057*	0.466 (14)
C17	-0.3573 (14)	-0.0310 (15)	0.6699 (7)	0.081 (3)	0.466 (14)
H17A	-0.4580	-0.0138	0.6323	0.121*	0.466 (14)
H17B	-0.3005	0.0565	0.7174	0.121*	0.466 (14)
H17C	-0.3919	-0.1285	0.6971	0.121*	0.466 (14)
C18	-0.3287 (14)	-0.1936 (14)	0.5463 (7)	0.072 (2)	0.466 (14)
H18A	-0.3457	-0.2878	0.5774	0.109*	0.466 (14)
H18B	-0.2506	-0.1931	0.5078	0.109*	0.466 (14)
H18C	-0.4380	-0.1927	0.5093	0.109*	0.466 (14)
C16'	-0.1003 (8)	-0.0176 (9)	0.7010 (5)	0.0522 (17)	0.534 (14)
H16C	-0.1343	0.0073	0.7560	0.063*	0.534 (14)
H16D	-0.0713	-0.1157	0.7065	0.063*	0.534 (14)
C17'	-0.4188 (10)	-0.0984 (12)	0.6542 (6)	0.0696 (19)	0.534 (14)
H17D	-0.5174	-0.1059	0.6051	0.104*	0.534 (14)
H17E	-0.4126	-0.0232	0.7037	0.104*	0.534 (14)
H17F	-0.4304	-0.2012	0.6755	0.104*	0.534 (14)
C18'	-0.2597 (14)	-0.1404 (10)	0.5439 (6)	0.069 (2)	0.534 (14)
H18D	-0.2704	-0.2459	0.5609	0.104*	0.534 (14)
H18E	-0.1566	-0.1009	0.5219	0.104*	0.534 (14)
H18F	-0.3592	-0.1438	0.4964	0.104*	0.534 (14)
C19	1.0189 (3)	0.2131 (3)	0.97840 (17)	0.0611 (6)	
C20	0.7315 (3)	0.5186 (3)	0.77151 (16)	0.0566 (6)	
H20A	0.6673	0.5809	0.7936	0.068*	

H20B	0.8532	0.5823	0.7882	0.068*
C21	0.8499 (3)	0.3012 (3)	0.52575 (16)	0.0546 (5)
C22	0.9421 (3)	0.4749 (3)	0.52195 (16)	0.0596 (6)
H22	0.9121	0.5504	0.5538	0.072*

Atomic displacement parameters (Å²)

	U^{11}	U^{22}	U^{33}	U^{12}	U^{13}	U^{23}
F1	0.0795 (9)	0.0485 (7)	0.0819 (9)	0.0300 (7)	0.0234 (7)	0.0074 (6)
N1	0.0391 (9)	0.0413 (9)	0.0524 (10)	0.0045 (7)	-0.0009 (7)	0.0088 (7)
N2	0.0497 (13)	0.0901 (17)	0.1124 (19)	0.0268 (12)	-0.0048 (12)	0.0306 (14)
O1	0.0550 (9)	0.0639 (10)	0.0372 (7)	0.0175 (7)	0.0052 (6)	-0.0027 (6)
O2	0.0677 (11)	0.0855 (13)	0.0646 (10)	0.0316 (9)	0.0234 (8)	0.0325 (9)
O3	0.0687 (11)	0.0924 (13)	0.0771 (12)	0.0283 (10)	0.0276 (9)	0.0315 (10)
O4	0.0964 (15)	0.0679 (12)	0.1023 (15)	0.0192 (11)	0.0256 (12)	-0.0067 (11)
C1	0.0357 (9)	0.0409 (10)	0.0369 (9)	0.0136 (8)	0.0053 (7)	-0.0006 (7)
C2	0.0382 (10)	0.0433 (10)	0.0497 (11)	0.0112 (8)	0.0050 (8)	0.0046 (8)
C3	0.0468 (11)	0.0455 (11)	0.0516 (11)	0.0182 (9)	0.0067 (9)	0.0084 (9)
C4	0.0384 (10)	0.0575 (12)	0.0504 (11)	0.0216 (9)	0.0056 (8)	0.0052 (9)
C5	0.0344 (10)	0.0556 (12)	0.0601 (13)	0.0113 (9)	0.0117 (9)	0.0112 (10)
C6	0.0399 (10)	0.0489 (11)	0.0454 (10)	0.0149 (8)	0.0103 (8)	0.0078 (8)
C7	0.0307 (9)	0.0386 (9)	0.0388 (9)	0.0088 (7)	0.0031 (7)	0.0043 (7)
C8	0.0360 (10)	0.0474 (10)	0.0397 (10)	0.0149 (8)	0.0038 (8)	0.0082 (8)
C9	0.0408 (10)	0.0527 (11)	0.0425 (10)	0.0142 (9)	0.0078 (8)	0.0018 (8)
C10	0.0416 (11)	0.0369 (10)	0.0616 (13)	0.0114 (8)	0.0122 (9)	0.0057 (8)
C11	0.0540 (12)	0.0461 (11)	0.0522 (12)	0.0184 (9)	0.0066 (9)	0.0152 (9)
C12	0.0507 (12)	0.0506 (11)	0.0388 (10)	0.0158 (9)	0.0048 (8)	0.0082 (8)
C13	0.0369 (10)	0.0442 (10)	0.0367 (9)	0.0123 (8)	0.0026 (7)	0.0021 (7)
C14	0.0384 (10)	0.0422 (10)	0.0552 (12)	0.0099 (8)	-0.0015 (9)	0.0037 (8)
C15	0.0396 (11)	0.0547 (13)	0.0701 (15)	0.0084 (9)	-0.0033 (10)	0.0108 (10)
C16	0.038 (3)	0.049 (3)	0.052 (4)	0.015 (2)	0.001 (2)	0.001 (2)
C17	0.048 (5)	0.092 (7)	0.101 (6)	0.020 (4)	0.023 (4)	-0.013 (5)
C18	0.058 (5)	0.082 (7)	0.054 (4)	0.004 (4)	-0.005 (4)	-0.011 (4)
C16'	0.039 (3)	0.059 (3)	0.047 (3)	0.006 (2)	0.002 (2)	0.009 (2)
C17'	0.040 (4)	0.073 (5)	0.090 (5)	0.007 (3)	0.019 (3)	0.006 (4)
C18'	0.078 (6)	0.059 (4)	0.059 (3)	0.006 (3)	0.019 (4)	-0.012 (3)
C19	0.0466 (13)	0.0629 (14)	0.0733 (15)	0.0206 (11)	0.0077 (11)	0.0161 (11)
C20	0.0431 (11)	0.0581 (13)	0.0661 (14)	0.0117 (10)	0.0120 (10)	0.0216 (11)
C21	0.0453 (12)	0.0589 (13)	0.0558 (13)	0.0126 (10)	0.0071 (10)	0.0225 (11)
C22	0.0566 (14)	0.0654 (14)	0.0569 (13)	0.0211 (11)	0.0096 (10)	0.0180 (11)

Geometric parameters (Å, °)

F1—C10	1.367 (2)	C10—C11	1.362 (3)
N1—C17	1.323 (9)	C11—C12	1.386 (3)
N1—C18'	1.373 (8)	C11—H11	0.9300
N1—C16'	1.504 (5)	C12—H12	0.9300
N1—C16	1.531 (6)	C13—C14	1.534 (3)

N1—C17'	1.566 (8)	C14—C15	1.528 (3)
N1—C18	1.574 (10)	C14—H14A	0.9700
N1—H1A	0.9100	C14—H14B	0.9700
N2—C19	1.136 (3)	C15—C16	1.456 (6)
O1—C13	1.420 (2)	C15—C16'	1.500 (6)
O1—H1	0.8200	C15—H15A	0.9700
O2—C20	1.425 (3)	C15—H15B	0.9700
O2—H2	0.8200	C16—H16A	0.9700
O3—C21	1.257 (3)	C16—H16B	0.9700
O4—C21	1.214 (3)	C17—H17A	0.9600
C1—C2	1.391 (3)	C17—H17B	0.9600
C1—C6	1.414 (3)	C17—H17C	0.9600
C1—C13	1.540 (2)	C18—H18A	0.9600
C2—C3	1.378 (3)	C18—H18B	0.9600
C2—H2A	0.9300	C18—H18C	0.9600
C3—C4	1.380 (3)	C16'—H16C	0.9700
C3—H3	0.9300	C16'—H16D	0.9700
C4—C5	1.386 (3)	C17'—H17D	0.9600
C4—C19	1.441 (3)	C17'—H17E	0.9600
C5—C6	1.384 (3)	C17'—H17F	0.9600
C5—H5	0.9300	C18'—H18D	0.9600
C6—C20	1.514 (3)	C18'—H18E	0.9600
C7—C12	1.386 (3)	C18'—H18F	0.9600
C7—C8	1.387 (3)	C20—H20A	0.9700
C7—C13	1.531 (3)	C20—H20B	0.9700
C8—C9	1.379 (3)	C21—C22	1.506 (3)
C8—H8	0.9300	C22—C22 ⁱ	1.269 (4)
C9—C10	1.372 (3)	C22—H22	0.9300
C9—H9	0.9300		
C17—N1—C18'	134.8 (5)	O1—C13—C1	109.05 (15)
C17—N1—C16'	93.0 (5)	C7—C13—C1	110.65 (14)
C18'—N1—C16'	117.9 (5)	C14—C13—C1	112.41 (15)
C17—N1—C16	119.4 (5)	C15—C14—C13	112.24 (17)
C18'—N1—C16	92.2 (4)	C15—C14—H14A	109.2
C16'—N1—C16	27.2 (2)	C13—C14—H14A	109.2
C17—N1—C17'	24.3 (4)	C15—C14—H14B	109.2
C18'—N1—C17'	110.8 (4)	C13—C14—H14B	109.2
C16'—N1—C17'	106.5 (4)	H14A—C14—H14B	107.9
C16—N1—C17'	128.0 (5)	C16—C15—C16'	27.9 (2)
C17—N1—C18	111.7 (5)	C16—C15—C14	111.9 (3)
C18'—N1—C18	23.5 (4)	C16'—C15—C14	112.9 (3)
C16'—N1—C18	124.9 (6)	C16—C15—H15A	109.2
C16—N1—C18	104.7 (5)	C16'—C15—H15A	83.4
C17'—N1—C18	87.5 (4)	C14—C15—H15A	109.2
C17—N1—H1A	106.8	C16—C15—H15B	109.2
C18'—N1—H1A	92.0	C16'—C15—H15B	129.4
C16'—N1—H1A	111.9	C14—C15—H15B	109.2

C16—N1—H1A	106.8	H15A—C15—H15B	107.9
C17'—N1—H1A	117.7	C15—C16—N1	111.9 (4)
C18—N1—H1A	106.8	C15—C16—H16A	109.2
C13—O1—H1	109.5	N1—C16—H16A	109.2
C20—O2—H2	109.5	C15—C16—H16B	109.2
C2—C1—C6	117.88 (17)	N1—C16—H16B	109.2
C2—C1—C13	120.62 (16)	H16A—C16—H16B	107.9
C6—C1—C13	121.48 (16)	N1—C17—H17A	109.5
C3—C2—C1	123.02 (18)	N1—C17—H17B	109.5
C3—C2—H2A	118.5	N1—C17—H17C	109.5
C1—C2—H2A	118.5	N1—C18—H18A	109.5
C2—C3—C4	118.84 (19)	N1—C18—H18B	109.5
C2—C3—H3	120.6	N1—C18—H18C	109.5
C4—C3—H3	120.6	C15—C16'—N1	111.1 (4)
C3—C4—C5	119.35 (18)	C15—C16'—H16C	109.4
C3—C4—C19	120.94 (19)	N1—C16'—H16C	109.4
C5—C4—C19	119.7 (2)	C15—C16'—H16D	109.4
C6—C5—C4	122.44 (19)	N1—C16'—H16D	109.4
C6—C5—H5	118.8	H16C—C16'—H16D	108.0
C4—C5—H5	118.8	N1—C17'—H17D	109.5
C5—C6—C1	118.47 (18)	N1—C17'—H17E	109.5
C5—C6—C20	116.23 (18)	H17D—C17'—H17E	109.5
C1—C6—C20	125.30 (18)	N1—C17'—H17F	109.5
C12—C7—C8	118.55 (17)	H17D—C17'—H17F	109.5
C12—C7—C13	121.01 (16)	H17E—C17'—H17F	109.5
C8—C7—C13	120.36 (16)	N1—C18'—H18D	109.5
C9—C8—C7	121.12 (17)	N1—C18'—H18E	109.5
C9—C8—H8	119.4	H18D—C18'—H18E	109.5
C7—C8—H8	119.4	N1—C18'—H18F	109.5
C10—C9—C8	118.15 (18)	H18D—C18'—H18F	109.5
C10—C9—H9	120.9	H18E—C18'—H18F	109.5
C8—C9—H9	120.9	N2—C19—C4	178.8 (3)
C11—C10—F1	118.72 (18)	O2—C20—C6	115.10 (19)
C11—C10—C9	123.02 (19)	O2—C20—H20A	108.5
F1—C10—C9	118.24 (19)	C6—C20—H20A	108.5
C10—C11—C12	118.06 (18)	O2—C20—H20B	108.5
C10—C11—H11	121.0	C6—C20—H20B	108.5
C12—C11—H11	121.0	H20A—C20—H20B	107.5
C11—C12—C7	121.10 (18)	O4—C21—O3	123.6 (2)
C11—C12—H12	119.5	O4—C21—C22	123.2 (2)
C7—C12—H12	119.5	O3—C21—C22	113.2 (2)
O1—C13—C7	111.63 (15)	C22 ⁱ —C22—C21	124.2 (3)
O1—C13—C14	103.90 (15)	C22 ⁱ —C22—H22	117.9
C7—C13—C14	109.04 (15)	C21—C22—H22	117.9
C6—C1—C2—C3	-1.1 (3)	C6—C1—C13—O1	61.9 (2)
C13—C1—C2—C3	177.22 (18)	C2—C1—C13—C7	120.45 (18)
C1—C2—C3—C4	0.8 (3)	C6—C1—C13—C7	-61.3 (2)

C2—C3—C4—C5	-0.5 (3)	C2—C1—C13—C14	-1.7 (2)
C2—C3—C4—C19	178.5 (2)	C6—C1—C13—C14	176.56 (17)
C3—C4—C5—C6	0.6 (3)	O1—C13—C14—C15	-57.5 (2)
C19—C4—C5—C6	-178.4 (2)	C7—C13—C14—C15	61.7 (2)
C4—C5—C6—C1	-0.9 (3)	C1—C13—C14—C15	-175.25 (17)
C4—C5—C6—C20	178.1 (2)	C13—C14—C15—C16	155.5 (5)
C2—C1—C6—C5	1.2 (3)	C13—C14—C15—C16'	-174.2 (5)
C13—C1—C6—C5	-177.17 (17)	C16'—C15—C16—N1	68.1 (7)
C2—C1—C6—C20	-177.78 (19)	C14—C15—C16—N1	166.0 (5)
C13—C1—C6—C20	3.9 (3)	C17—N1—C16—C15	-86.9 (12)
C12—C7—C8—C9	0.3 (3)	C18'—N1—C16—C15	126.9 (9)
C13—C7—C8—C9	-176.38 (17)	C16'—N1—C16—C15	-71.4 (7)
C7—C8—C9—C10	0.7 (3)	C17'—N1—C16—C15	-114.3 (9)
C8—C9—C10—C11	-1.2 (3)	C18—N1—C16—C15	147.1 (9)
C8—C9—C10—F1	176.93 (17)	C16—C15—C16'—N1	-69.9 (7)
F1—C10—C11—C12	-177.34 (18)	C14—C15—C16'—N1	-163.8 (5)
C9—C10—C11—C12	0.8 (3)	C17—N1—C16'—C15	-127.4 (10)
C10—C11—C12—C7	0.2 (3)	C18'—N1—C16'—C15	86.9 (9)
C8—C7—C12—C11	-0.7 (3)	C16—N1—C16'—C15	66.2 (7)
C13—C7—C12—C11	175.92 (18)	C17'—N1—C16'—C15	-147.9 (8)
C12—C7—C13—O1	13.5 (2)	C18—N1—C16'—C15	113.4 (9)
C8—C7—C13—O1	-169.91 (16)	C3—C4—C19—N2	-164 (14)
C12—C7—C13—C14	-100.7 (2)	C5—C4—C19—N2	15 (14)
C8—C7—C13—C14	75.9 (2)	C5—C6—C20—O2	119.3 (2)
C12—C7—C13—C1	135.18 (18)	C1—C6—C20—O2	-61.7 (3)
C8—C7—C13—C1	-48.3 (2)	O4—C21—C22—C22 ⁱ	-14.6 (4)
C2—C1—C13—O1	-116.40 (18)	O3—C21—C22—C22 ⁱ	164.3 (3)

Symmetry code: (i) $-x+2, -y+1, -z+1$.

Hydrogen-bond geometry (\AA , $^\circ$)

<i>D</i> —H \cdots <i>A</i>	<i>D</i> —H	H \cdots <i>A</i>	<i>D</i> \cdots <i>A</i>	<i>D</i> —H \cdots <i>A</i>
O1—H1 \cdots O2	0.82	1.85	2.655 (2)	165
O2—H2 \cdots O3	0.82	1.85	2.642 (3)	162
N1—H1A \cdots O4 ⁱⁱ	0.91	2.30	3.152 (3)	155
N1—H1A \cdots O3 ⁱⁱ	0.91	2.04	2.834 (3)	145
C2—H2A \cdots F1 ⁱⁱⁱ	0.93	2.48	3.392 (3)	167

Symmetry codes: (ii) $x-1, y, z$; (iii) $x, y-1, z$.