

Acta Crystallographica Section E

Structure Reports

Online

ISSN 1600-5368

1-Benzoyl-3,3-bis(2-methylpropyl)thiourea

N. Selvakumaran,^a R. Karvembu,^{a‡} Seik Weng Ng^b and Edward R. T. Tiekink^{b*}^aDepartment of Chemistry, National Institute of Technology, Tiruchirappalli 620 015, India, and ^bDepartment of Chemistry, University of Malaya, 50603 Kuala Lumpur, Malaysia

Correspondence e-mail: Edward.Tiekink@gmail.com

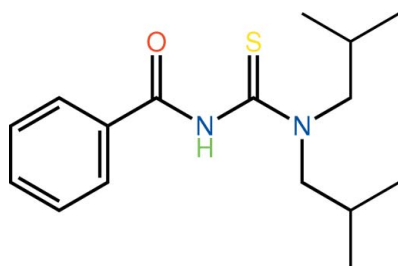
Received 25 January 2011; accepted 7 February 2011

Key indicators: single-crystal X-ray study; $T = 295$ K; mean $\sigma(\text{C}-\text{C}) = 0.006$ Å; R factor = 0.074; wR factor = 0.219; data-to-parameter ratio = 20.4.

The title compound, $\text{C}_{16}\text{H}_{24}\text{N}_2\text{OS}$, is twisted about the central $\text{N}(\text{H})-\text{C}$ bond with the $\text{C}-\text{N}-\text{C}-\text{S}$ torsion angle being 119.6 (3)°. The carbonyl O and thione S atoms are directed to opposite sides of the molecule, a conformation that allows for the formation of a linear supramolecular chain comprising alternating eight-membered $\{\cdots\text{HNCS}\}_2$ and 14-membered $\{\cdots\text{HCNCNCO}\}_2$ synthons.

Related literature

For the coordinating ability of N,N -dialkyl- N' -benzoylthioureas; see: Binzet *et al.* (2009); Gunasekaran *et al.* (2010); Sacht *et al.* (2000). For the utility of Cd derivatives to serve as synthetic precursors for CdS nanoparticles, see: Bruce *et al.* (2007). For their biological activity, see: Arslan *et al.* (2006). For related structures, see: Gunasekaran *et al.* (2010a,b).



Experimental

Crystal data

$\text{C}_{16}\text{H}_{24}\text{N}_2\text{OS}$
 $M_r = 292.43$
 Triclinic, $P\bar{1}$
 $a = 8.9331$ (10) Å

$b = 10.1023$ (9) Å
 $c = 11.0725$ (12) Å
 $\alpha = 105.776$ (9)°
 $\beta = 112.734$ (10)°

$\gamma = 100.782$ (9)°
 $V = 837.47$ (19) Å³
 $Z = 2$
 Mo $K\alpha$ radiation

$\mu = 0.19$ mm⁻¹
 $T = 295$ K
 $0.35 \times 0.30 \times 0.25$ mm

Data collection

Agilent Supernova Dual diffractometer with an Atlas detector
 Absorption correction: multi-scan (*CrysAlis PRO*; Agilent, 2010)
 $T_{\min} = 0.936$, $T_{\max} = 0.954$

6265 measured reflections
 3693 independent reflections
 2232 reflections with $I > 2\sigma(I)$
 $R_{\text{int}} = 0.025$

Refinement

$R[F^2 > 2\sigma(F^2)] = 0.074$
 $wR(F^2) = 0.219$
 $S = 1.04$
 3693 reflections
 181 parameters

12 restraints
 H-atom parameters constrained
 $\Delta\rho_{\text{max}} = 0.86$ e Å⁻³
 $\Delta\rho_{\text{min}} = -0.58$ e Å⁻³

Table 1

Hydrogen-bond geometry (Å, °).

$D-H\cdots A$	$D-H$	$H\cdots A$	$D\cdots A$	$D-H\cdots A$
$\text{N1}-\text{H1}\cdots\text{S1}^i$	0.88	2.74	3.586 (3)	162
$\text{C9}-\text{H9a}\cdots\text{O1}^{ii}$	0.97	2.49	3.424 (5)	162

Symmetry codes: (i) $-x + 2, -y + 2, -z + 2$; (ii) $-x + 1, -y + 1, -z + 1$.

Data collection: *CrysAlis PRO* (Agilent, 2010); cell refinement: *CrysAlis PRO*; data reduction: *CrysAlis PRO*; program(s) used to solve structure: *SHELXS97* (Sheldrick, 2008); program(s) used to refine structure: *SHELXL97* (Sheldrick, 2008); molecular graphics: *ORTEP-3* (Farrugia, 1997) and *DIAMOND* (Brandenburg, 2006); software used to prepare material for publication: *publCIF* (Westrip, 2010).

NS thanks the NITT for a Fellowship. The authors thank the University of Malaya for supporting this study.

Supplementary data and figures for this paper are available from the IUCr electronic archives (Reference: E22230).

References

- Agilent (2010). *CrysAlis PRO*. Agilent Technologies, Yarnton, Oxfordshire, England.
 Arslan, H., Kulcu, N. & Florke, U. (2006). *Spectrochim. Acta Part A*, **64**, 1065–1071.
 Binzet, G., Kulcu, N., Florke, U. & Arslan, H. (2009). *J. Coord. Chem.* **62**, 3454–3462.
 Brandenburg, K. (2006). *DIAMOND*. Crystal Impact GbR, Bonn, Germany.
 Bruce, J. C., Revaprasadu, N. & Koch, D. R. (2007). *New J. Chem.* **31**, 1647–1653.
 Farrugia, L. J. (1997). *J. Appl. Cryst.* **30**, 565.
 Gunasekaran, N. & Karvembu, R. (2010). *Inorg. Chem. Commun.* **13**, 952–955.
 Gunasekaran, N., Karvembu, R., Ng, S. W. & Tiekink, E. R. T. (2010a). *Acta Cryst. E* **66**, o2572–o2573.
 Gunasekaran, N., Karvembu, R., Ng, S. W. & Tiekink, E. R. T. (2010b). *Acta Cryst. E* **66**, o2601.
 Sacht, C., Datt, M. S., Otto, S. & Roodt, A. (2000). *J. Chem. Soc. Dalton Trans.* pp. 727–733.
 Sheldrick, G. M. (2008). *Acta Cryst. A* **64**, 112–122.
 Westrip, S. P. (2010). *J. Appl. Cryst.* **43**, 920–925.

‡ Additional correspondence author, e-mail: kar@nitt.edu.

supporting information

Acta Cryst. (2011). E67, o602 [doi:10.1107/S1600536811004557]

1-Benzoyl-3,3-bis(2-methylpropyl)thiourea

N. Selvakumaran, R. Karvembu, Seik Weng Ng and Edward R. T. Tiekink

S1. Comment

N,N-Dialkyl-*N'*-benzoylthioureas are versatile ligands which can coordinate to transition metal centres either as neutral species or in an anionic form. The complexation capacity of thiourea derivatives has been reported in several studies (Binzet *et al.*, 2009; Gunasekaran *et al.*, 2010). Chiral and achiral platinum(II) complexes of these ligands have been used as chemotherapeutic agents (Sacht *et al.*, 2000) while cadmium(II) complexes of *N,N*-diethyl-*N'*-benzoylthiourea have been used as single-source precursors for the preparation of CdS nanoparticles (Bruce *et al.*, 2007). In addition, thioureas have been shown to possess anti-tubercular, anti-helminthic, anti-bacterial, insecticidal and rodenticidal properties (Arslan *et al.*, 2006). In continuation of structural studies of these derivatives (Gunasekaran *et al.*, 2010a; Gunasekaran *et al.*, 2010b), the title compound, (I), was investigated.

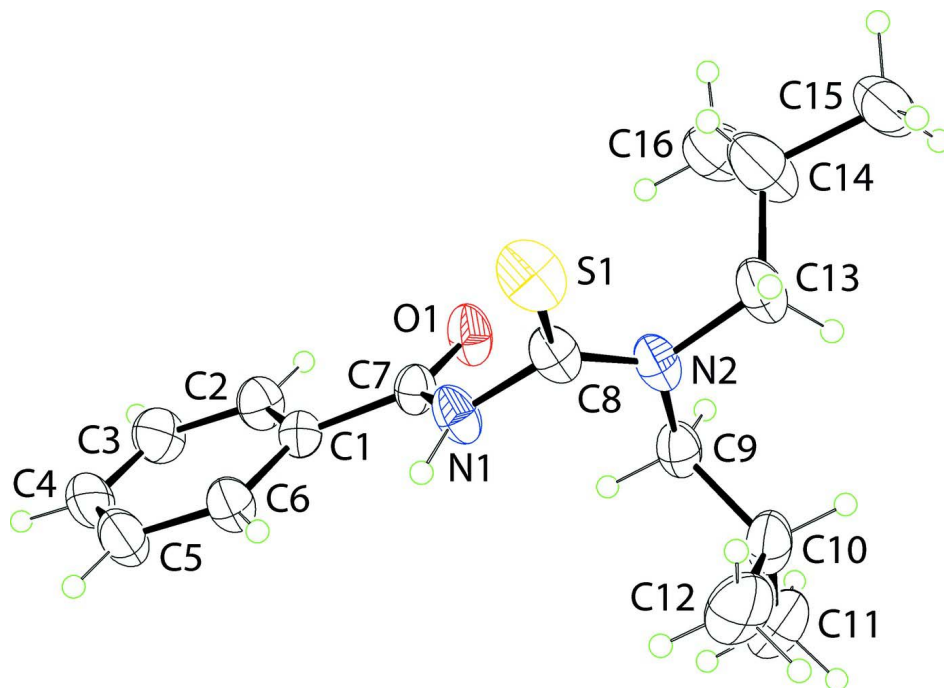
In (I), Fig. 1, the molecule exhibits a significant twist about the central N(H)–C bond as seen in the value of the C7–N1–C8–S1 torsion angle of 119.6 (3)°. This arrangement causes the carbonyl-O and thione-S atoms to lie on opposite sides of the molecule. Similarly, the carbonyl and N–H groups are directed away from each other. This conformation allows for the formation of N–H⋯S hydrogen bonds, Table 1, *via* an eight-membered {⋯HNCS}₂ ring which has the shape of an elongated chair. These are connected into supramolecular chains along [1 1 1] *via* C–H⋯O contacts that close 14-membered {⋯HCNCNO}₂ synthons, also adopting the shape of an elongated chair, Table 1 and Fig. 2. Chains are arranged into layers *via* weak $\pi\cdots\pi$ interactions [$Cg(C1-C6)\cdots Cg(C1-C6)^i = 3.806(3) \text{ \AA}$ for $i: 2 - x, 1 - y, 2 - z$] and these stack as shown in Fig. 3.

S2. Experimental

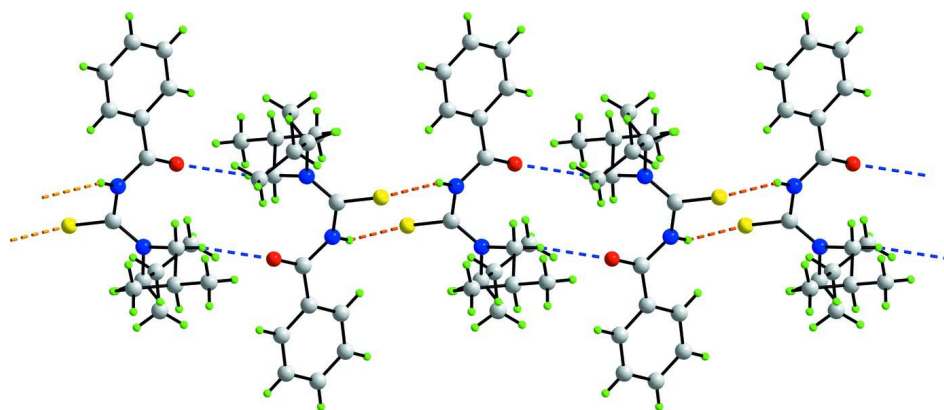
A solution of benzoyl chloride (0.7029 g, 5 mmol) in acetone (50 ml) was added drop wise to a suspension of potassium thiocyanate (0.4859 g, 5 mmol) in anhydrous acetone (50 ml). The reaction mixture was heated under reflux for 45 min. and then cooled to room temperature. A solution of diisobutyl amine (0.6462 g, 5 mmol) in acetone (30 ml) was added and the resulting mixture was stirred for 2 h. Hydrochloric acid (0.1 N, 300 ml) was added and the resulting white solid was filtered, washed with water and dried *in vacuo*. Single crystals for X-ray diffraction were grown at room temperature from an acetonitrile solution of the compound. Yield 72%; *M.Pt.* 415 K. FT–IR (KBr) $\nu(N-H)$ 3268, $\nu(C=O)$ 1688, $\nu(C=S)$ 1264 cm^{-1} .

S3. Refinement

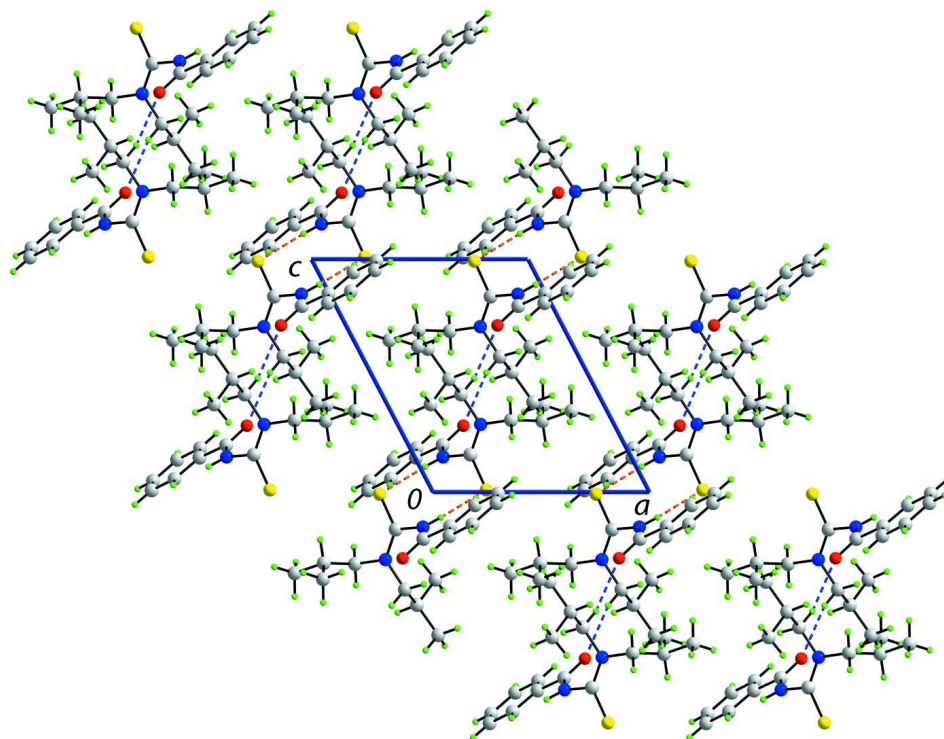
The H-atoms were placed in calculated positions (N–H = 0.88; C–H 0.93 to 0.98 Å) and were included in the refinement in the riding model approximation, with $U_{iso}(H)$ set to 1.2 to 1.5 $U_{equiv}(N, C)$.

**Figure 1**

The molecular structure of (I) showing the atom-labelling scheme and displacement ellipsoids at the 35% probability level.

**Figure 2**

Supramolecular chain in (I) mediated by N–H...S hydrogen bonds and C–H...O contacts, shown as orange and blue dashed lines, respectively.

**Figure 3**

View in projection down the *b* axis of the unit cell contents of (I). The N–H···S hydrogen bonds and C–H···O contacts are shown as orange and blue dashed lines, respectively.

1-Benzoyl-3,3-bis(2-methylpropyl)thiourea

Crystal data

$C_{16}H_{24}N_2OS$

$M_r = 292.43$

Triclinic, $P\bar{1}$

Hall symbol: $-P\ 1$

$a = 8.9331(10)\ \text{\AA}$

$b = 10.1023(9)\ \text{\AA}$

$c = 11.0725(12)\ \text{\AA}$

$\alpha = 105.776(9)^\circ$

$\beta = 112.734(10)^\circ$

$\gamma = 100.782(9)^\circ$

$V = 837.47(19)\ \text{\AA}^3$

$Z = 2$

$F(000) = 316$

$D_x = 1.160\ \text{Mg m}^{-3}$

Mo $K\alpha$ radiation, $\lambda = 0.71073\ \text{\AA}$

Cell parameters from 1845 reflections

$\theta = 2.2\text{--}29.2^\circ$

$\mu = 0.19\ \text{mm}^{-1}$

$T = 295\ \text{K}$

Block, colourless

$0.35 \times 0.30 \times 0.25\ \text{mm}$

Data collection

Agilent Supernova Dual

diffractometer with an Atlas detector

Radiation source: SuperNova (Mo) X-ray

Source

Mirror monochromator

Detector resolution: $10.4041\ \text{pixels mm}^{-1}$

ω scans

Absorption correction: multi-scan

(*CrysAlis PRO*; Agilent, 2010)

$T_{\min} = 0.936$, $T_{\max} = 0.954$

6265 measured reflections

3693 independent reflections

2232 reflections with $I > 2\sigma(I)$

$R_{\text{int}} = 0.025$

$\theta_{\max} = 27.5^\circ$, $\theta_{\min} = 2.2^\circ$

$h = -10 \rightarrow 11$

$k = -13 \rightarrow 12$

$l = -14 \rightarrow 12$

Refinement

Refinement on F^2
 Least-squares matrix: full
 $R[F^2 > 2\sigma(F^2)] = 0.074$
 $wR(F^2) = 0.219$
 $S = 1.04$
 3693 reflections
 181 parameters
 12 restraints
 Primary atom site location: structure-invariant
 direct methods

Secondary atom site location: difference Fourier
 map
 Hydrogen site location: inferred from
 neighbouring sites
 H-atom parameters constrained
 $w = 1/[\sigma^2(F_o^2) + (0.078P)^2 + 0.7593P]$
 where $P = (F_o^2 + 2F_c^2)/3$
 $(\Delta/\sigma)_{\max} = 0.001$
 $\Delta\rho_{\max} = 0.86 \text{ e } \text{\AA}^{-3}$
 $\Delta\rho_{\min} = -0.58 \text{ e } \text{\AA}^{-3}$

Special details

Geometry. All e.s.d.'s (except the e.s.d. in the dihedral angle between two l.s. planes) are estimated using the full covariance matrix. The cell e.s.d.'s are taken into account individually in the estimation of e.s.d.'s in distances, angles and torsion angles; correlations between e.s.d.'s in cell parameters are only used when they are defined by crystal symmetry. An approximate (isotropic) treatment of cell e.s.d.'s is used for estimating e.s.d.'s involving l.s. planes.

Refinement. Refinement of F^2 against ALL reflections. The weighted R -factor wR and goodness of fit S are based on F^2 , conventional R -factors R are based on F , with F set to zero for negative F^2 . The threshold expression of $F^2 > 2\sigma(F^2)$ is used only for calculating R -factors(gt) *etc.* and is not relevant to the choice of reflections for refinement. R -factors based on F^2 are statistically about twice as large as those based on F , and R -factors based on ALL data will be even larger.

Fractional atomic coordinates and isotropic or equivalent isotropic displacement parameters (\AA^2)

	<i>x</i>	<i>y</i>	<i>z</i>	$U_{\text{iso}}^*/U_{\text{eq}}$
S1	0.74828 (14)	0.92803 (11)	0.99096 (12)	0.0711 (4)
O1	0.6998 (3)	0.5295 (2)	0.7153 (3)	0.0585 (7)
N1	0.8690 (3)	0.7638 (3)	0.8494 (3)	0.0512 (7)
H1	0.9753	0.8236	0.8909	0.061*
N2	0.6172 (3)	0.7981 (3)	0.7098 (3)	0.0515 (7)
C1	0.9961 (4)	0.5699 (3)	0.8524 (3)	0.0431 (7)
C2	0.9697 (5)	0.4222 (4)	0.8112 (4)	0.0535 (9)
H2	0.8597	0.3566	0.7487	0.064*
C3	1.1045 (5)	0.3706 (4)	0.8615 (5)	0.0653 (11)
H3	1.0847	0.2708	0.8335	0.078*
C4	1.2664 (5)	0.4656 (5)	0.9522 (5)	0.0669 (11)
H4	1.3568	0.4306	0.9866	0.080*
C5	1.2961 (5)	0.6133 (5)	0.9929 (5)	0.0661 (11)
H5	1.4069	0.6780	1.0542	0.079*
C6	1.1618 (4)	0.6657 (4)	0.9431 (4)	0.0538 (9)
H6	1.1826	0.7656	0.9705	0.065*
C7	0.8421 (4)	0.6165 (3)	0.7986 (3)	0.0426 (7)
C8	0.7372 (4)	0.8250 (3)	0.8392 (4)	0.0513 (9)
C9	0.6351 (4)	0.7432 (3)	0.5811 (4)	0.0526 (9)
H9A	0.5352	0.6588	0.5122	0.063*
H9B	0.7353	0.7118	0.6035	0.063*
C10	0.6535 (5)	0.8564 (4)	0.5150 (4)	0.0654 (11)
H10	0.5463	0.8792	0.4831	0.079*
C11	0.6790 (7)	0.7906 (5)	0.3856 (4)	0.0892 (15)
H11A	0.5849	0.7025	0.3204	0.134*

H11B	0.7847	0.7691	0.4149	0.134*
H11C	0.6835	0.8587	0.3403	0.134*
C12	0.7998 (6)	0.9970 (4)	0.6237 (5)	0.0877 (15)
H12A	0.8091	1.0661	0.5801	0.132*
H12B	0.9057	0.9765	0.6583	0.132*
H12C	0.7765	1.0367	0.7012	0.132*
C13	0.4659 (4)	0.8426 (4)	0.6909 (5)	0.0662 (11)
H13A	0.4206	0.8536	0.6005	0.079*
H13B	0.5025	0.9377	0.7640	0.079*
C14	0.3240 (5)	0.7441 (4)	0.6949 (7)	0.106 (2)
H14	0.3640	0.7625	0.7957	0.127*
C15	0.1645 (5)	0.7914 (5)	0.6518 (6)	0.0888 (15)
H15A	0.1979	0.8950	0.6987	0.133*
H15B	0.0863	0.7435	0.6785	0.133*
H15C	0.1094	0.7655	0.5512	0.133*
C16	0.2816 (6)	0.5830 (4)	0.6261 (6)	0.0816 (13)
H16A	0.3853	0.5586	0.6554	0.122*
H16B	0.2264	0.5542	0.5251	0.122*
H16C	0.2058	0.5330	0.6536	0.122*

Atomic displacement parameters (Å²)

	U^{11}	U^{22}	U^{33}	U^{12}	U^{13}	U^{23}
S1	0.0676 (7)	0.0507 (6)	0.0765 (7)	0.0191 (5)	0.0294 (6)	0.0036 (5)
O1	0.0434 (13)	0.0383 (13)	0.0653 (16)	0.0071 (11)	0.0031 (12)	0.0157 (12)
N1	0.0344 (14)	0.0355 (15)	0.0622 (18)	0.0091 (12)	0.0100 (13)	0.0078 (13)
N2	0.0364 (14)	0.0400 (15)	0.0659 (19)	0.0137 (12)	0.0144 (14)	0.0156 (14)
C1	0.0428 (17)	0.0444 (18)	0.0423 (17)	0.0167 (15)	0.0181 (14)	0.0176 (14)
C2	0.054 (2)	0.0427 (19)	0.059 (2)	0.0190 (16)	0.0215 (17)	0.0169 (17)
C3	0.069 (3)	0.054 (2)	0.088 (3)	0.034 (2)	0.040 (2)	0.034 (2)
C4	0.055 (2)	0.077 (3)	0.089 (3)	0.039 (2)	0.035 (2)	0.046 (3)
C5	0.0419 (19)	0.071 (3)	0.077 (3)	0.0192 (19)	0.0186 (18)	0.029 (2)
C6	0.0451 (19)	0.050 (2)	0.060 (2)	0.0171 (16)	0.0180 (16)	0.0193 (17)
C7	0.0417 (17)	0.0384 (17)	0.0383 (16)	0.0125 (14)	0.0111 (14)	0.0128 (14)
C8	0.0403 (17)	0.0325 (17)	0.067 (2)	0.0098 (14)	0.0173 (16)	0.0118 (16)
C9	0.0438 (18)	0.0412 (19)	0.060 (2)	0.0136 (15)	0.0125 (16)	0.0183 (17)
C10	0.055 (2)	0.052 (2)	0.075 (3)	0.0160 (18)	0.0104 (19)	0.032 (2)
C11	0.113 (4)	0.077 (3)	0.071 (3)	0.025 (3)	0.033 (3)	0.038 (3)
C12	0.092 (3)	0.052 (3)	0.089 (3)	0.000 (2)	0.021 (3)	0.030 (2)
C13	0.046 (2)	0.057 (2)	0.089 (3)	0.0247 (18)	0.022 (2)	0.027 (2)
C14	0.065 (3)	0.072 (3)	0.203 (7)	0.033 (3)	0.070 (4)	0.065 (4)
C15	0.060 (3)	0.097 (4)	0.139 (5)	0.039 (3)	0.057 (3)	0.060 (4)
C16	0.071 (3)	0.057 (3)	0.113 (4)	0.012 (2)	0.047 (3)	0.027 (3)

Geometric parameters (Å, °)

S1—C8	1.673 (4)	C9—H9B	0.9700
O1—C7	1.214 (4)	C10—C12	1.528 (4)

N1—C7	1.377 (4)	C10—C11	1.529 (4)
N1—C8	1.410 (4)	C10—H10	0.9800
N1—H1	0.8800	C11—H11A	0.9600
N2—C8	1.330 (4)	C11—H11B	0.9600
N2—C13	1.461 (4)	C11—H11C	0.9600
N2—C9	1.464 (5)	C12—H12A	0.9600
C1—C2	1.380 (5)	C12—H12B	0.9600
C1—C6	1.386 (5)	C12—H12C	0.9600
C1—C7	1.493 (4)	C13—C14	1.482 (4)
C2—C3	1.381 (5)	C13—H13A	0.9700
C2—H2	0.9300	C13—H13B	0.9700
C3—C4	1.362 (6)	C14—C16	1.498 (4)
C3—H3	0.9300	C14—C15	1.530 (4)
C4—C5	1.376 (6)	C14—H14	0.9800
C4—H4	0.9300	C15—H15A	0.9600
C5—C6	1.382 (5)	C15—H15B	0.9600
C5—H5	0.9300	C15—H15C	0.9600
C6—H6	0.9300	C16—H16A	0.9600
C9—C10	1.533 (4)	C16—H16B	0.9600
C9—H9A	0.9700	C16—H16C	0.9600
C7—N1—C8	124.2 (3)	C12—C10—H10	108.2
C7—N1—H1	117.9	C11—C10—H10	108.2
C8—N1—H1	117.9	C9—C10—H10	108.2
C8—N2—C13	120.0 (3)	C10—C11—H11A	109.5
C8—N2—C9	124.2 (3)	C10—C11—H11B	109.5
C13—N2—C9	115.2 (3)	H11A—C11—H11B	109.5
C2—C1—C6	118.6 (3)	C10—C11—H11C	109.5
C2—C1—C7	117.4 (3)	H11A—C11—H11C	109.5
C6—C1—C7	124.0 (3)	H11B—C11—H11C	109.5
C1—C2—C3	120.9 (4)	C10—C12—H12A	109.5
C1—C2—H2	119.6	C10—C12—H12B	109.5
C3—C2—H2	119.6	H12A—C12—H12B	109.5
C4—C3—C2	120.1 (4)	C10—C12—H12C	109.5
C4—C3—H3	119.9	H12A—C12—H12C	109.5
C2—C3—H3	119.9	H12B—C12—H12C	109.5
C3—C4—C5	120.0 (3)	N2—C13—C14	116.6 (3)
C3—C4—H4	120.0	N2—C13—H13A	108.1
C5—C4—H4	120.0	C14—C13—H13A	108.1
C4—C5—C6	120.2 (4)	N2—C13—H13B	108.1
C4—C5—H5	119.9	C14—C13—H13B	108.1
C6—C5—H5	119.9	H13A—C13—H13B	107.3
C5—C6—C1	120.2 (3)	C13—C14—C16	118.4 (4)
C5—C6—H6	119.9	C13—C14—C15	111.0 (3)
C1—C6—H6	119.9	C16—C14—C15	112.5 (4)
O1—C7—N1	121.4 (3)	C13—C14—H14	104.5
O1—C7—C1	122.1 (3)	C16—C14—H14	104.5
N1—C7—C1	116.6 (3)	C15—C14—H14	104.5

N2—C8—N1	117.1 (3)	C14—C15—H15A	109.5
N2—C8—S1	125.9 (3)	C14—C15—H15B	109.5
N1—C8—S1	117.1 (3)	H15A—C15—H15B	109.5
N2—C9—C10	113.3 (3)	C14—C15—H15C	109.5
N2—C9—H9A	108.9	H15A—C15—H15C	109.5
C10—C9—H9A	108.9	H15B—C15—H15C	109.5
N2—C9—H9B	108.9	C14—C16—H16A	109.5
C10—C9—H9B	108.9	C14—C16—H16B	109.5
H9A—C9—H9B	107.7	H16A—C16—H16B	109.5
C12—C10—C11	112.2 (3)	C14—C16—H16C	109.5
C12—C10—C9	110.9 (3)	H16A—C16—H16C	109.5
C11—C10—C9	109.1 (3)	H16B—C16—H16C	109.5
C6—C1—C2—C3	1.4 (5)	C13—N2—C8—N1	172.5 (3)
C7—C1—C2—C3	-177.1 (3)	C9—N2—C8—N1	-16.3 (5)
C1—C2—C3—C4	-0.5 (6)	C13—N2—C8—S1	-9.0 (5)
C2—C3—C4—C5	-0.5 (6)	C9—N2—C8—S1	162.2 (3)
C3—C4—C5—C6	0.6 (7)	C7—N1—C8—N2	-61.8 (5)
C4—C5—C6—C1	0.4 (6)	C7—N1—C8—S1	119.6 (3)
C2—C1—C6—C5	-1.4 (5)	C8—N2—C9—C10	-109.9 (4)
C7—C1—C6—C5	177.1 (3)	C13—N2—C9—C10	61.7 (4)
C8—N1—C7—O1	15.7 (5)	N2—C9—C10—C12	53.6 (4)
C8—N1—C7—C1	-163.6 (3)	N2—C9—C10—C11	177.6 (3)
C2—C1—C7—O1	-4.2 (5)	C8—N2—C13—C14	-82.1 (5)
C6—C1—C7—O1	177.4 (3)	C9—N2—C13—C14	105.9 (4)
C2—C1—C7—N1	175.2 (3)	N2—C13—C14—C16	-39.2 (7)
C6—C1—C7—N1	-3.3 (5)	N2—C13—C14—C15	-171.4 (4)

Hydrogen-bond geometry (Å, °)

<i>D</i> —H... <i>A</i>	<i>D</i> —H	H... <i>A</i>	<i>D</i> ... <i>A</i>	<i>D</i> —H... <i>A</i>
N1—H1...S1 ⁱ	0.88	2.74	3.586 (3)	162
C9—H9a...O1 ⁱⁱ	0.97	2.49	3.424 (5)	162

Symmetry codes: (i) $-x+2, -y+2, -z+2$; (ii) $-x+1, -y+1, -z+1$.