

Acta Crystallographica Section E

Structure Reports

Online

ISSN 1600-5368

1-*n*-Decyl-5-nitro-1*H*-benzimidazol-2(3*H*)-one

 Younes Ouzidan,^a Y. Kandri Rodi,^a Sonia Ladeira,^b
 El Mokhtar Essassi^c and Seik Weng Ng^{d*}

^aLaboratoire de Chimie Organique Appliquée, Faculté des Sciences et Techniques, Université Sidi Mohamed Ben Abdallah, Fés, Morocco, ^bService Commun Rayons-X FR2599, Université Paul Sabatier Bâtiment 2R1, 118 route de Narbonne, Toulouse, France, ^cLaboratoire de Chimie Organique Hétérocyclique, Pôle de Compétences Pharmacochimie, Université Mohammed V-Agdal, BP 1014 Avenue Ibn Batout, Rabat, Morocco, and ^dDepartment of Chemistry, University of Malaya, 50603 Kuala Lumpur, Malaysia

Correspondence e-mail: seikweng@um.edu.my

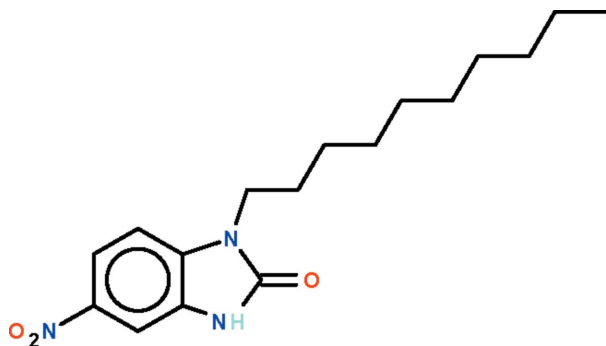
Received 27 January 2011; accepted 6 February 2011

Key indicators: single-crystal X-ray study; $T = 293$ K; mean $\sigma(\text{C}-\text{C}) = 0.004$ Å; R factor = 0.055; wR factor = 0.175; data-to-parameter ratio = 14.2.

The benzimidazolone part of the title molecule, $\text{C}_{17}\text{H}_{25}\text{N}_3\text{O}_3$, is almost planar (r.m.s. deviation = 0.016 Å) and its mean plane is aligned at 7.9 (4)° with respect to the mean plane of the nitro substituent. In the crystal, two molecules are disposed about a center of inversion, generating a $\text{N}-\text{H}\cdots\text{O}$ hydrogen-bonded cyclic dimer with a $R_2^2(8)$ graph-set motif.

Related literature

For the crystal structure of 1-isopropenyl-1*H*-benzimidazol-2(3*H*)-one, see: Saber *et al.* (2010) and for 5-nitro-1-*n*-octyl-1*H*-benzimidazol-2(3*H*)-one, see: Ouzidan *et al.* (2011). For graph-set notation, see: Etter (1990).



Experimental

Crystal data

$\text{C}_{17}\text{H}_{25}\text{N}_3\text{O}_3$
 $M_r = 319.40$
 Triclinic, $P\bar{1}$
 $a = 5.4933$ (2) Å
 $b = 10.3063$ (4) Å
 $c = 16.1655$ (6) Å
 $\alpha = 106.504$ (2)°
 $\beta = 98.545$ (2)°
 $\gamma = 96.809$ (2)°
 $V = 855.21$ (6) Å³
 $Z = 2$
 Mo $K\alpha$ radiation
 $\mu = 0.09$ mm⁻¹
 $T = 293$ K
 $0.32 \times 0.06 \times 0.04$ mm

Data collection

Bruker APEXII diffractometer
 10701 measured reflections
 2971 independent reflections
 1600 reflections with $I > 2\sigma(I)$
 $R_{\text{int}} = 0.068$

Refinement

$R[F^2 > 2\sigma(F^2)] = 0.055$
 $wR(F^2) = 0.175$
 $S = 0.89$
 2971 reflections
 209 parameters
 H-atom parameters constrained
 $\Delta\rho_{\text{max}} = 0.30$ e Å⁻³
 $\Delta\rho_{\text{min}} = -0.31$ e Å⁻³

Table 1

Hydrogen-bond geometry (Å, °).

$D-\text{H}\cdots A$	$D-\text{H}$	$\text{H}\cdots A$	$D\cdots A$	$D-\text{H}\cdots A$
$\text{N1}-\text{H1}\cdots\text{O1}^i$	0.88	1.92	2.784 (3)	168

 Symmetry code: (i) $-x + 1, -y + 1, -z + 1$.

Data collection: APEX2 (Bruker, 2005); cell refinement: SAINT (Bruker, 2005); data reduction: SAINT; program(s) used to solve structure: SHELXS97 (Sheldrick, 2008); program(s) used to refine structure: SHELXL97 (Sheldrick, 2008); molecular graphics: X-SEED (Barbour, 2001); software used to prepare material for publication: publCIF (Westrip, 2010).

We thank Université Sidi Mohamed Ben Abdallah, Université Mohammed V-Agdal and the University of Malaya for supporting this study.

Supplementary data and figures for this paper are available from the IUCr electronic archives (Reference: ZS2093).

References

- Barbour, L. J. (2001). *J. Supramol. Chem.* **1**, 189–191.
 Bruker (2005). APEX2 and SAINT. Bruker AXS Inc., Madison, Wisconsin, USA.
 Etter, M. C. (1990). *Acc. Chem. Res.* **23**, 120–126.
 Ouzidan, Y., Kandri Rodi, Y., Saffon, N., Essassi, E. M. & Ng, S. W. (2011). *Acta Cryst.* **E67**, o558.
 Saber, A., Zouihri, H., Essassi, E. M. & Ng, S. W. (2010). *Acta Cryst.* **E66**, o1409.
 Sheldrick, G. M. (2008). *Acta Cryst.* **A64**, 112–122.
 Westrip, S. P. (2010). *J. Appl. Cryst.* **43**, 920–925.

supporting information

Acta Cryst. (2011). E67, o613 [doi:10.1107/S1600536811004399]

1-*n*-Decyl-5-nitro-1*H*-benzimidazol-2(3*H*)-one

Younes Ouzidan, Y. Kandri Rodi, Sonia Ladeira, El Mokhtar Essassi and Seik Weng Ng

S1. Comment

Tetraalkylammonium halides are used as phase-transfer catalyst in the synthesis of alkyl-substituted benzimidazolones. A previous study reported the 1-isopropenyl derivative in which the amino –NH unit forms a hydrogen bond to the inversion-related molecule to generate a hydrogen-bonded dimer (Saber *et al.*, 2010). The present compound (Scheme I) features a long *n*-octyl chain that adopts an extended zigzag conformation (Fig. 1). The benzimidazolone part of the C₁₇H₂₅N₃O₃ molecule is planar (r.m.s. deviation 0.016 Å) and its mean plane is aligned at 7.9 (4)° with respect to the mean plane of the nitro substituent. Two molecules are disposed about a center of inversion to generate a hydrogen-bonded cyclic dimer (Table 1), whose hydrogen-bonding motif is described by the R²₂(8) graph set (Etter, 1990).

S2. Experimental

To 5-nitro-1*H*-benzimidazol-2(3*H*)-one (0.2 g, 1.1 mmol), potassium carbonate (0.30 g, 2.2 mmol) and tetra-*n*-butylammonium bromide (0.07 g, 0.2 mmol) in DMF (15 ml) was added 1-bromo-*n*-decane (0.46 ml, 2.2 mmol). Stirring was continued at room temperature for 6 h. The salt was removed by filtration and the filtrate concentrated under reduced pressure. The residue was separated by chromatography on a column of silica gel with ethyl acetate/hexane (1/2) as eluent. The compound was recrystallized from diethyl ether to give colorless crystals.

S3. Refinement

Carbon-bound H-atoms were placed in calculated positions (C–H 0.93–0.97, N–H 0.88 Å) and were included in the refinement in the riding model approximation, with $U_{\text{iso}}(\text{H})$ set to 1.2–1.5 $U_{\text{eq}}(\text{C}, \text{N})$.

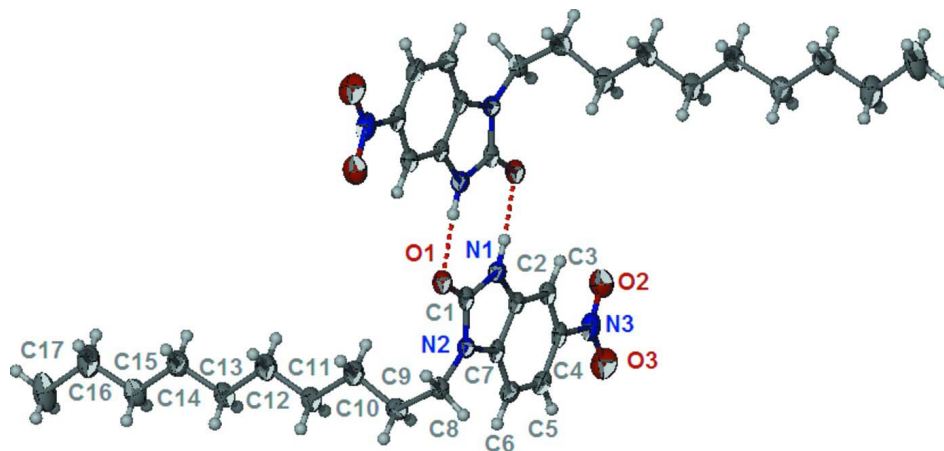


Figure 1

Thermal ellipsoid plot drawn at the 50% probability level (Barbour, 2001), of two molecules of C₁₇H₂₅N₃O₃ disposed about a center of inversion.

1-*n*-decyl-5-nitro-1*H*-benzimidazol-2(3*H*)-one*Crystal data*C₁₇H₂₅N₃O₃ $M_r = 319.40$ Triclinic, $P\bar{1}$

Hall symbol: -P 1

 $a = 5.4933$ (2) Å $b = 10.3063$ (4) Å $c = 16.1655$ (6) Å $\alpha = 106.504$ (2)° $\beta = 98.545$ (2)° $\gamma = 96.809$ (2)° $V = 855.21$ (6) Å³ $Z = 2$ $F(000) = 344$ $D_x = 1.240$ Mg m⁻³Mo $K\alpha$ radiation, $\lambda = 0.71073$ Å

Cell parameters from 1521 reflections

 $\theta = 2.7$ – 27.3 ° $\mu = 0.09$ mm⁻¹ $T = 293$ K

Prism, colorless

 $0.32 \times 0.06 \times 0.04$ mm*Data collection*

Bruker APEXII

diffractometer

Radiation source: fine-focus sealed tube

Graphite monochromator

 φ and ω scans

10701 measured reflections

2971 independent reflections

1600 reflections with $I > 2\sigma(I)$ $R_{\text{int}} = 0.068$ $\theta_{\text{max}} = 25.0$ °, $\theta_{\text{min}} = 3.9$ ° $h = -6$ → 6 $k = -10$ → 12 $l = -19$ → 19 *Refinement*Refinement on F^2

Least-squares matrix: full

 $R[F^2 > 2\sigma(F^2)] = 0.055$ $wR(F^2) = 0.175$ $S = 0.89$

2971 reflections

209 parameters

0 restraints

Primary atom site location: structure-invariant

direct methods

Secondary atom site location: difference Fourier

map

Hydrogen site location: inferred from

neighbouring sites

H-atom parameters constrained

 $w = 1/[\sigma^2(F_o^2) + (0.1056P)^2]$ where $P = (F_o^2 + 2F_c^2)/3$ $(\Delta/\sigma)_{\text{max}} = 0.001$ $\Delta\rho_{\text{max}} = 0.30$ e Å⁻³ $\Delta\rho_{\text{min}} = -0.31$ e Å⁻³Extinction correction: *SHELXL97* (Sheldrick, 2008), $F_c^* = kF_c[1 + 0.001x F_c^2 \lambda^3 / \sin(2\theta)]^{-1/4}$

Extinction coefficient: 0.034 (6)

Fractional atomic coordinates and isotropic or equivalent isotropic displacement parameters (Å²)

	<i>x</i>	<i>y</i>	<i>z</i>	$U_{\text{iso}}^*/U_{\text{eq}}$
O1	0.6868 (3)	0.57512 (19)	0.61197 (12)	0.0413 (6)
O2	0.8896 (4)	-0.0690 (2)	0.29737 (16)	0.0579 (7)
O3	1.2510 (4)	-0.0845 (2)	0.36526 (16)	0.0680 (7)
N1	0.7157 (4)	0.3830 (2)	0.49844 (15)	0.0357 (6)
H1	0.5863	0.3832	0.4592	0.043*
N2	0.9999 (4)	0.4426 (2)	0.61946 (15)	0.0337 (6)
N3	1.0691 (5)	-0.0264 (2)	0.35868 (19)	0.0482 (7)
C1	0.7879 (5)	0.4765 (3)	0.57918 (19)	0.0354 (7)
C2	0.8734 (5)	0.2871 (3)	0.48616 (18)	0.0328 (7)
C3	0.8717 (5)	0.1718 (3)	0.41760 (19)	0.0371 (7)
H3	0.7483	0.1435	0.3671	0.044*
C4	1.0672 (5)	0.1002 (3)	0.4288 (2)	0.0380 (7)

C5	1.2516 (5)	0.1396 (3)	0.5022 (2)	0.0397 (8)
H5	1.3801	0.0890	0.5052	0.048*
C6	1.2493 (5)	0.2538 (3)	0.5717 (2)	0.0385 (7)
H6	1.3723	0.2805	0.6223	0.046*
C7	1.0566 (5)	0.3268 (3)	0.56298 (19)	0.0347 (7)
C8	1.1434 (5)	0.5230 (3)	0.70567 (18)	0.0399 (7)
H8A	1.0786	0.6078	0.7254	0.048*
H8B	1.3157	0.5469	0.7007	0.048*
C9	1.1361 (5)	0.4479 (3)	0.77434 (19)	0.0420 (7)
H9A	1.1954	0.3618	0.7530	0.050*
H9B	1.2519	0.5027	0.8276	0.050*
C10	0.8830 (5)	0.4174 (3)	0.7976 (2)	0.0457 (8)
H10A	0.7678	0.3575	0.7457	0.055*
H10B	0.8185	0.5023	0.8171	0.055*
C11	0.8982 (5)	0.3489 (3)	0.8699 (2)	0.0463 (8)
H11A	0.9593	0.2632	0.8491	0.056*
H11B	1.0202	0.4076	0.9204	0.056*
C12	0.6562 (6)	0.3190 (3)	0.8998 (2)	0.0516 (9)
H12A	0.5896	0.4036	0.9179	0.062*
H12B	0.5366	0.2556	0.8505	0.062*
C13	0.6824 (6)	0.2585 (3)	0.9749 (2)	0.0492 (8)
H13A	0.8060	0.3210	1.0234	0.059*
H13B	0.7457	0.1731	0.9561	0.059*
C14	0.4445 (6)	0.2305 (3)	1.0082 (2)	0.0535 (9)
H14A	0.3754	0.3146	1.0235	0.064*
H14B	0.3244	0.1634	0.9608	0.064*
C15	0.4751 (6)	0.1780 (3)	1.0874 (2)	0.0531 (9)
H15A	0.5400	0.0926	1.0717	0.064*
H15B	0.5981	0.2439	1.1344	0.064*
C16	0.2378 (7)	0.1537 (4)	1.1214 (2)	0.0692 (11)
H16A	0.1189	0.0825	1.0760	0.083*
H16B	0.1659	0.2371	1.1331	0.083*
C17	0.2764 (8)	0.1116 (4)	1.2043 (3)	0.0862 (13)
H17A	0.1189	0.0965	1.2220	0.129*
H17B	0.3888	0.1832	1.2503	0.129*
H17C	0.3460	0.0286	1.1932	0.129*

Atomic displacement parameters (\AA^2)

	U^{11}	U^{22}	U^{33}	U^{12}	U^{13}	U^{23}
O1	0.0513 (12)	0.0398 (11)	0.0402 (12)	0.0189 (10)	0.0180 (10)	0.0148 (10)
O2	0.0723 (16)	0.0459 (14)	0.0531 (16)	0.0082 (12)	0.0178 (14)	0.0095 (12)
O3	0.0794 (17)	0.0556 (14)	0.0770 (18)	0.0342 (13)	0.0326 (14)	0.0149 (13)
N1	0.0405 (13)	0.0385 (13)	0.0363 (15)	0.0144 (11)	0.0142 (11)	0.0176 (13)
N2	0.0368 (13)	0.0354 (13)	0.0344 (14)	0.0097 (10)	0.0119 (11)	0.0151 (12)
N3	0.0618 (18)	0.0381 (15)	0.056 (2)	0.0155 (14)	0.0303 (16)	0.0194 (14)
C1	0.0446 (17)	0.0345 (16)	0.0357 (18)	0.0080 (14)	0.0186 (14)	0.0179 (15)
C2	0.0383 (16)	0.0332 (16)	0.0355 (18)	0.0072 (13)	0.0170 (14)	0.0184 (14)

C3	0.0440 (17)	0.0374 (16)	0.0355 (18)	0.0054 (13)	0.0146 (14)	0.0172 (15)
C4	0.0491 (18)	0.0321 (16)	0.0444 (19)	0.0096 (14)	0.0273 (16)	0.0192 (15)
C5	0.0412 (17)	0.0383 (17)	0.051 (2)	0.0139 (14)	0.0212 (16)	0.0215 (16)
C6	0.0371 (16)	0.0431 (17)	0.0436 (19)	0.0086 (13)	0.0137 (14)	0.0226 (16)
C7	0.0415 (16)	0.0346 (16)	0.0376 (18)	0.0073 (13)	0.0212 (14)	0.0191 (14)
C8	0.0435 (16)	0.0414 (17)	0.0352 (18)	0.0068 (13)	0.0102 (14)	0.0114 (15)
C9	0.0466 (17)	0.0414 (17)	0.0382 (18)	0.0102 (14)	0.0075 (14)	0.0119 (14)
C10	0.0541 (19)	0.0456 (18)	0.044 (2)	0.0130 (15)	0.0156 (16)	0.0185 (16)
C11	0.0561 (19)	0.0483 (18)	0.0399 (19)	0.0123 (15)	0.0140 (15)	0.0183 (16)
C12	0.064 (2)	0.0493 (19)	0.050 (2)	0.0120 (16)	0.0166 (17)	0.0237 (17)
C13	0.059 (2)	0.0508 (19)	0.043 (2)	0.0115 (16)	0.0125 (16)	0.0199 (16)
C14	0.060 (2)	0.056 (2)	0.054 (2)	0.0110 (16)	0.0165 (17)	0.0275 (18)
C15	0.070 (2)	0.0456 (18)	0.046 (2)	0.0063 (16)	0.0131 (18)	0.0188 (17)
C16	0.086 (3)	0.071 (2)	0.068 (3)	0.017 (2)	0.036 (2)	0.037 (2)
C17	0.136 (4)	0.076 (3)	0.063 (3)	0.012 (3)	0.041 (3)	0.038 (2)

Geometric parameters (Å, °)

O1—C1	1.240 (3)	C10—C11	1.525 (4)
O2—N3	1.228 (3)	C10—H10A	0.9700
O3—N3	1.231 (3)	C10—H10B	0.9700
N1—C1	1.353 (3)	C11—C12	1.508 (4)
N1—C2	1.382 (3)	C11—H11A	0.9700
N1—H1	0.8800	C11—H11B	0.9700
N2—C1	1.379 (3)	C12—C13	1.511 (4)
N2—C7	1.382 (3)	C12—H12A	0.9700
N2—C8	1.454 (4)	C12—H12B	0.9700
N3—C4	1.468 (4)	C13—C14	1.513 (4)
C2—C3	1.374 (4)	C13—H13A	0.9700
C2—C7	1.402 (4)	C13—H13B	0.9700
C3—C4	1.391 (4)	C14—C15	1.520 (4)
C3—H3	0.9300	C14—H14A	0.9700
C4—C5	1.367 (4)	C14—H14B	0.9700
C5—C6	1.380 (4)	C15—C16	1.509 (4)
C5—H5	0.9300	C15—H15A	0.9700
C6—C7	1.382 (3)	C15—H15B	0.9700
C6—H6	0.9300	C16—C17	1.517 (5)
C8—C9	1.526 (4)	C16—H16A	0.9700
C8—H8A	0.9700	C16—H16B	0.9700
C8—H8B	0.9700	C17—H17A	0.9600
C9—C10	1.514 (4)	C17—H17B	0.9600
C9—H9A	0.9700	C17—H17C	0.9600
C9—H9B	0.9700		
C1—N1—C2	110.5 (2)	C9—C10—H10B	109.3
C1—N1—H1	124.7	C11—C10—H10B	109.3
C2—N1—H1	124.7	H10A—C10—H10B	108.0
C1—N2—C7	109.0 (2)	C12—C11—C10	115.4 (2)

C1—N2—C8	124.0 (2)	C12—C11—H11A	108.4
C7—N2—C8	126.9 (2)	C10—C11—H11A	108.4
O2—N3—O3	123.7 (3)	C12—C11—H11B	108.4
O2—N3—C4	118.5 (2)	C10—C11—H11B	108.4
O3—N3—C4	117.8 (3)	H11A—C11—H11B	107.5
O1—C1—N1	127.5 (3)	C13—C12—C11	113.7 (2)
O1—C1—N2	125.5 (3)	C13—C12—H12A	108.8
N1—C1—N2	107.0 (2)	C11—C12—H12A	108.8
C3—C2—N1	132.1 (3)	C13—C12—H12B	108.8
C3—C2—C7	121.8 (2)	C11—C12—H12B	108.8
N1—C2—C7	106.1 (2)	H12A—C12—H12B	107.7
C2—C3—C4	115.5 (3)	C12—C13—C14	115.2 (2)
C2—C3—H3	122.3	C12—C13—H13A	108.5
C4—C3—H3	122.3	C14—C13—H13A	108.5
C5—C4—C3	123.6 (3)	C12—C13—H13B	108.5
C5—C4—N3	118.8 (3)	C14—C13—H13B	108.5
C3—C4—N3	117.6 (3)	H13A—C13—H13B	107.5
C4—C5—C6	120.7 (2)	C15—C14—C13	115.0 (3)
C4—C5—H5	119.6	C15—C14—H14A	108.5
C6—C5—H5	119.6	C13—C14—H14A	108.5
C7—C6—C5	117.2 (3)	C15—C14—H14B	108.5
C7—C6—H6	121.4	C13—C14—H14B	108.5
C5—C6—H6	121.4	H14A—C14—H14B	107.5
N2—C7—C6	131.5 (3)	C16—C15—C14	114.5 (3)
N2—C7—C2	107.3 (2)	C16—C15—H15A	108.6
C6—C7—C2	121.2 (3)	C14—C15—H15A	108.6
N2—C8—C9	113.2 (2)	C16—C15—H15B	108.6
N2—C8—H8A	108.9	C14—C15—H15B	108.6
C9—C8—H8A	108.9	H15A—C15—H15B	107.6
N2—C8—H8B	108.9	C15—C16—C17	113.5 (3)
C9—C8—H8B	108.9	C15—C16—H16A	108.9
H8A—C8—H8B	107.8	C17—C16—H16A	108.9
C10—C9—C8	115.7 (2)	C15—C16—H16B	108.9
C10—C9—H9A	108.4	C17—C16—H16B	108.9
C8—C9—H9A	108.4	H16A—C16—H16B	107.7
C10—C9—H9B	108.4	C16—C17—H17A	109.5
C8—C9—H9B	108.4	C16—C17—H17B	109.5
H9A—C9—H9B	107.4	H17A—C17—H17B	109.5
C9—C10—C11	111.6 (2)	C16—C17—H17C	109.5
C9—C10—H10A	109.3	H17A—C17—H17C	109.5
C11—C10—H10A	109.3	H17B—C17—H17C	109.5
C2—N1—C1—O1	-179.0 (2)	C8—N2—C7—C6	2.5 (4)
C2—N1—C1—N2	1.4 (3)	C1—N2—C7—C2	-0.7 (3)
C7—N2—C1—O1	180.0 (2)	C8—N2—C7—C2	-177.4 (2)
C8—N2—C1—O1	-3.2 (4)	C5—C6—C7—N2	179.3 (3)
C7—N2—C1—N1	-0.4 (3)	C5—C6—C7—C2	-0.8 (4)
C8—N2—C1—N1	176.4 (2)	C3—C2—C7—N2	-177.8 (2)

C1—N1—C2—C3	177.4 (3)	N1—C2—C7—N2	1.4 (3)
C1—N1—C2—C7	-1.7 (3)	C3—C2—C7—C6	2.3 (4)
N1—C2—C3—C4	179.3 (2)	N1—C2—C7—C6	-178.4 (2)
C7—C2—C3—C4	-1.7 (4)	C1—N2—C8—C9	114.0 (3)
C2—C3—C4—C5	-0.3 (4)	C7—N2—C8—C9	-69.7 (3)
C2—C3—C4—N3	178.0 (2)	N2—C8—C9—C10	-65.3 (3)
O2—N3—C4—C5	172.5 (2)	C8—C9—C10—C11	-177.1 (2)
O3—N3—C4—C5	-7.0 (4)	C9—C10—C11—C12	177.9 (3)
O2—N3—C4—C3	-5.8 (4)	C10—C11—C12—C13	-176.8 (3)
O3—N3—C4—C3	174.7 (2)	C11—C12—C13—C14	178.5 (3)
C3—C4—C5—C6	1.8 (4)	C12—C13—C14—C15	-176.4 (3)
N3—C4—C5—C6	-176.5 (2)	C13—C14—C15—C16	178.6 (3)
C4—C5—C6—C7	-1.2 (4)	C14—C15—C16—C17	-175.7 (3)
C1—N2—C7—C6	179.2 (3)		

Hydrogen-bond geometry (Å, °)

<i>D—H...A</i>	<i>D—H</i>	<i>H...A</i>	<i>D...A</i>	<i>D—H...A</i>
N1—H1...O1 ⁱ	0.88	1.92	2.784 (3)	168

Symmetry code: (i) $-x+1, -y+1, -z+1$.