

Acta Crystallographica Section E

## Structure Reports

Online

ISSN 1600-5368

## 2-Ethyl-1H-imidazole-4-carboxylate monohydrate

Shi-Jie Li,<sup>a</sup> Juan-Hua Liu,<sup>a</sup> Wen-Dong Song,<sup>b\*</sup> Xiao-Fei Li<sup>c</sup> and Dong-Liang Miao<sup>a</sup>

<sup>a</sup>College of Food Science and Technology, Guangdong Ocean University, Zhanjiang 524088, People's Republic of China, <sup>b</sup>College of Science, Guangdong Ocean University, Zhanjiang 524088, People's Republic of China, and <sup>c</sup>College of Agriculture, Guangdong Ocean University, Zhanjiang 524088, People's Republic of China

Correspondence e-mail: songwd60@163.com

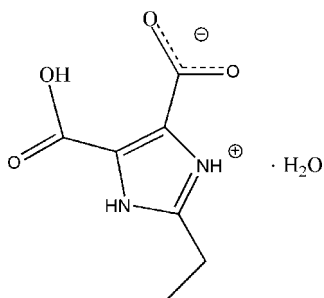
Received 9 March 2011; accepted 23 March 2011

Key indicators: single-crystal X-ray study;  $T = 298$  K; mean  $\sigma(\text{C}-\text{C}) = 0.003$  Å;  $R$  factor = 0.038;  $wR$  factor = 0.106; data-to-parameter ratio = 11.7.

In the title compound,  $\text{C}_7\text{H}_8\text{N}_2\text{O}_4 \cdot \text{H}_2\text{O}$ , the imidazole N atom is protonated and one of the carboxylate groups is deprotonated, forming a zwitterion. The two carboxyl groups are approximately coplanar with the imidazole ring [ $\text{O}-\text{C}-\text{C}-\text{C}$  torsion angles =  $-176.8$  (2) and  $2.9$  (4) $^\circ$  for one group and  $-4.6$  (3) and  $176.4$  (2) $^\circ$  for the other] and have an intramolecular  $\text{O}-\text{H} \cdots \text{O}$  hydrogen bond between them. The water molecule is linked to the organic molecules *via* an  $\text{N}-\text{H} \cdots \text{O}$  hydrogen bonds. Intermolecular  $\text{O}-\text{H} \cdots \text{O}$  and  $\text{N}-\text{H} \cdots \text{O}$  hydrogen bonds are found in the crystal structure.

## Related literature

For our past work based on the 2-propyl-1H-imidazole-4,5-carboxylate ( $\text{H}_3\text{pimda}$ ) ligand, see: Yan *et al.* (2010); Li *et al.* (2010); Song *et al.* (2010); He *et al.* (2010); Fan *et al.* (2010). For related coordination polymers based on  $\text{H}_3\text{EIDC}$  (2-ethyl-1H-imidazole-4,5-dicarboxylate), see: Wang *et al.* (2008); Zhang *et al.* (2010); Li *et al.* (2011). For the synthesis of  $\text{H}_3\text{EIDC}$ , see: Sun *et al.* (2006).



## Experimental

## Crystal data

$\text{C}_7\text{H}_{10}\text{N}_2\text{O}_5$   
 $M_r = 202.17$   
 Monoclinic,  $P2_1/c$   
 $a = 7.6132$  (6) Å  
 $b = 14.3779$  (16) Å  
 $c = 7.9396$  (8) Å  
 $\beta = 97.799$  (1) $^\circ$

$V = 861.04$  (15) Å<sup>3</sup>  
 $Z = 4$   
 Mo  $K\alpha$  radiation  
 $\mu = 0.13$  mm<sup>-1</sup>  
 $T = 298$  K  
 $0.50 \times 0.41 \times 0.40$  mm

## Data collection

Bruker SMART 1000 CCD area-detector diffractometer  
 Absorption correction: multi-scan (*SADABS*; Bruker, 2007)  
 $T_{\min} = 0.936$ ,  $T_{\max} = 0.948$

4224 measured reflections  
 1510 independent reflections  
 1166 reflections with  $I > 2\sigma(I)$   
 $R_{\text{int}} = 0.031$

## Refinement

$R[F^2 > 2\sigma(F^2)] = 0.038$   
 $wR(F^2) = 0.106$   
 $S = 1.05$   
 1510 reflections  
 129 parameters

3 restraints  
 H-atom parameters constrained  
 $\Delta\rho_{\max} = 0.28$  e Å<sup>-3</sup>  
 $\Delta\rho_{\min} = -0.21$  e Å<sup>-3</sup>

Table 1

Hydrogen-bond geometry (Å,  $^\circ$ ).

$D-H \cdots A$	$D-H$	$H \cdots A$	$D \cdots A$	$D-H \cdots A$
$\text{N1}-\text{H1} \cdots \text{O4}^{\text{i}}$	0.86	1.91	2.754 (2)	168
$\text{N2}-\text{H2} \cdots \text{O1W}^{\text{ii}}$	0.86	1.89	2.751 (2)	177
$\text{O2}-\text{H2A} \cdots \text{O3}$	0.82	1.63	2.452 (2)	176
$\text{O1W}-\text{H1W} \cdots \text{O2}^{\text{iii}}$	0.85	2.05	2.8863 (19)	169
$\text{O1W}-\text{H2W} \cdots \text{O1}$	0.85	2.03	2.849 (2)	163

Symmetry codes: (i)  $-x + 1, y + \frac{1}{2}, -z + \frac{1}{2}$ ; (ii)  $-x + 1, y - \frac{1}{2}, -z + \frac{1}{2}$ ; (iii)  $-x + 2, -y + 1, -z$ .

Data collection: *SMART* (Bruker, 2007); cell refinement: *S SAINT* (Bruker, 2007); data reduction: *S SAINT*; program(s) used to solve structure: *SHELXS97* (Sheldrick, 2008); program(s) used to refine structure: *SHELXL97* (Sheldrick, 2008); molecular graphics: *SHELXTL* (Sheldrick, 2008); software used to prepare material for publication: *SHELXTL*.

The work was supported by the Nonprofit Industry Foundation of the National Ocean Administration of China (grant No. 2000905021), the Guangdong Ocean Fisheries Technology Promotion Project [grant No. A2009003-018(c)], the Guangdong Chinese Academy of Science Comprehensive Strategic Cooperation Project (grant No. 2009B091300121), the Guangdong Province Key Project in the Field of Social Development [grant No. A2009011-007(c)], the Science and Technology Department of Guangdong Province Project (grant No. 00087 061110314018) and the Guangdong Natural Science Foundation (No. 9252408801000002).

Supplementary data and figures for this paper are available from the IUCr electronic archives (Reference: JH2272).

## References

- Bruker (2007). *SMART, SAINT and SADABS*. Bruker AXS Inc., Madison, Wisconsin, USA.
- Fan, R.-Z., Li, S.-J., Song, W.-D., Miao, D.-L. & Hu, S.-W. (2010). *Acta Cryst. E* **66**, m897–m898.
- He, L.-Z., Li, S.-J., Song, W.-D. & Miao, D.-L. (2010). *Acta Cryst. E* **66**, m896.
- Li, S.-J., Ma, X.-T., Song, W.-D., Li, X.-F. & Liu, J.-H. (2011). *Acta Cryst. E* **67**, m295–m296.
- Li, S.-J., Yan, J.-B., Song, W.-D., Wang, H. & Miao, D.-L. (2010). *Acta Cryst. E* **66**, m280.
- Sheldrick, G. M. (2008). *Acta Cryst. A* **64**, 112–122.
- Song, W.-D., Yan, J.-B., Li, S.-J., Miao, D.-L. & Li, X.-F. (2010). *Acta Cryst. E* **66**, m53.
- Sun, T., Ma, J.-P., Huang, R.-Q. & Dong, Y.-B. (2006). *Acta Cryst. E* **62**, o2751–o2752.
- Wang, S., Zhang, L. R., Li, G. H., Huo, Q. S. & Liu, Y. L. (2008). *CrystEngComm* **10**, 1662–1666.
- Yan, J.-B., Li, S.-J., Song, W.-D., Wang, H. & Miao, D.-L. (2010). *Acta Cryst. E* **66**, m99.
- Zhang, F. W., Li, Z. F., Ge, T. Z., Yao, H. C., Li, G., Lu, H. J. & Zhu, Y. Y. (2010). *Inorg. Chem.* **49**, 3776–3788.

## supporting information

*Acta Cryst.* (2011). E67, o996–o997 [doi:10.1107/S1600536811010774]

## 2-Ethyl-1*H*-imidazole-4-carboxylate monohydrate

Shi-Jie Li, Juan-Hua Liu, Wen-Dong Song, Xiao-Fei Li and Dong-Liang Miao

### S1. Comment

4,5-imidazoledicarboxylic acid (H<sub>3</sub>IDC) ligand possesses great potential for coordination interactions and hydrogen bonding, can be deprotonated to generate H<sub>2</sub>IDC<sup>-</sup>, H<sub>1</sub>IDC<sub>2</sub><sup>-</sup> and IDC<sub>3</sub><sup>-</sup> anions at different pH values. Up to date, it has been widely studied. 2-propyl-1*H*-imidazole-4,5-carboxylate (H<sub>3</sub>pimda) ligand as one derivative of H<sub>3</sub>IDC with efficient N,O-donors has been used to obtain new metal-organic complexes by our research group (Song *et al.*, 2010; Yan *et al.*, 2010; He *et al.* 2010; Fan *et al.* 2010; Li *et al.* 2010). Recently, an analogue of H<sub>3</sub>IDC, 2-ethyl-1*H*-imidazole-4,5-dicarboxylate (H<sub>3</sub>EIDC) ligand has also been used to construct intriguing coordination polymers (Wang *et al.*, 2008; Zhang *et al.*, 2010; Li *et al.*, 2011;). However, the crystal structure of H<sub>3</sub>EIDC ligand has not been determined. Considering that in mind, we focus on obtaining the crystal and its crystal structure will be reported here.

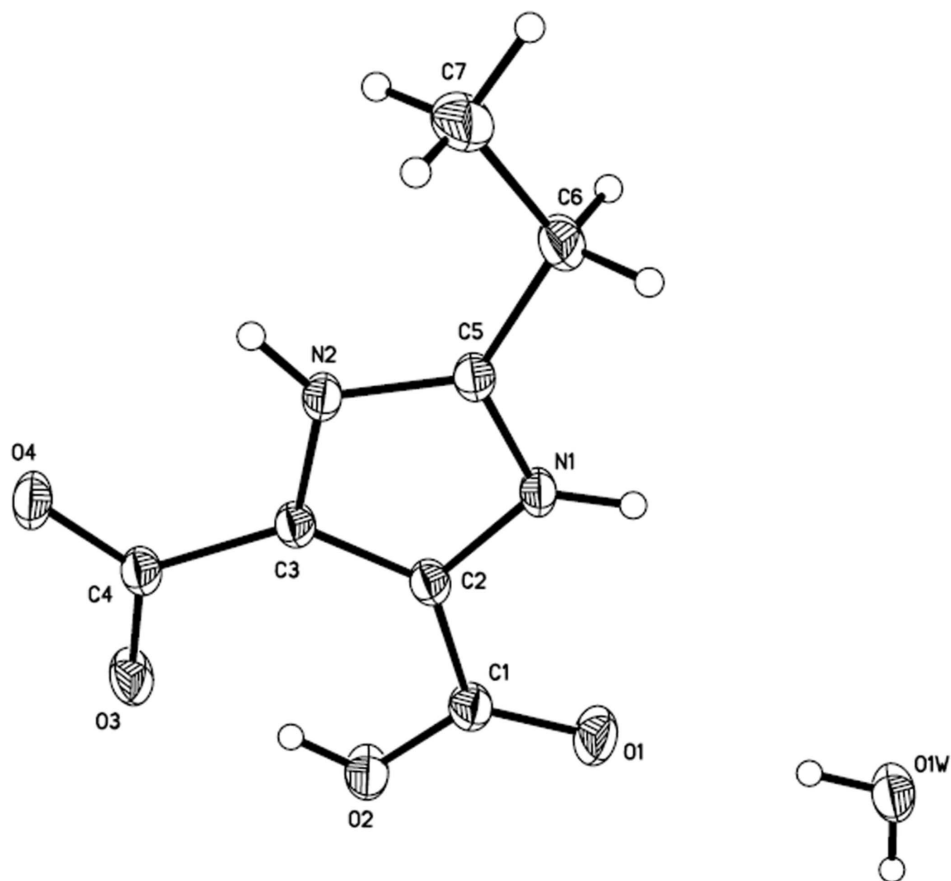
As illustrated in Fig. 1, the title compound, (C<sub>7</sub>H<sub>8</sub>N<sub>2</sub>O<sub>4</sub>).H<sub>2</sub>O, crystallizes as a zwitterion in which the imidazole N atom is protonated, one of the carboxylate groups is deprotonated. The two carboxyl groups are approximately coplanar with the imidazole ring, as indicated by the fact that the O1—C1—C2—C3 and O2—C1—C2—C3 torsion angles are -176.8 (2) ° and 2.9 (4) °, respectively; the O3—C4—C3—C2 and O4—C4—C3—C2 torsion angles are -4.6 (3) ° and 176.4 (2) °, respectively. The solvent water molecules are linked to the organic ligands via N—H···O and O—H···O hydrogen bonds (Table 1), which stabilize the three-dimensional network (Fig. 2).

### S2. Experimental

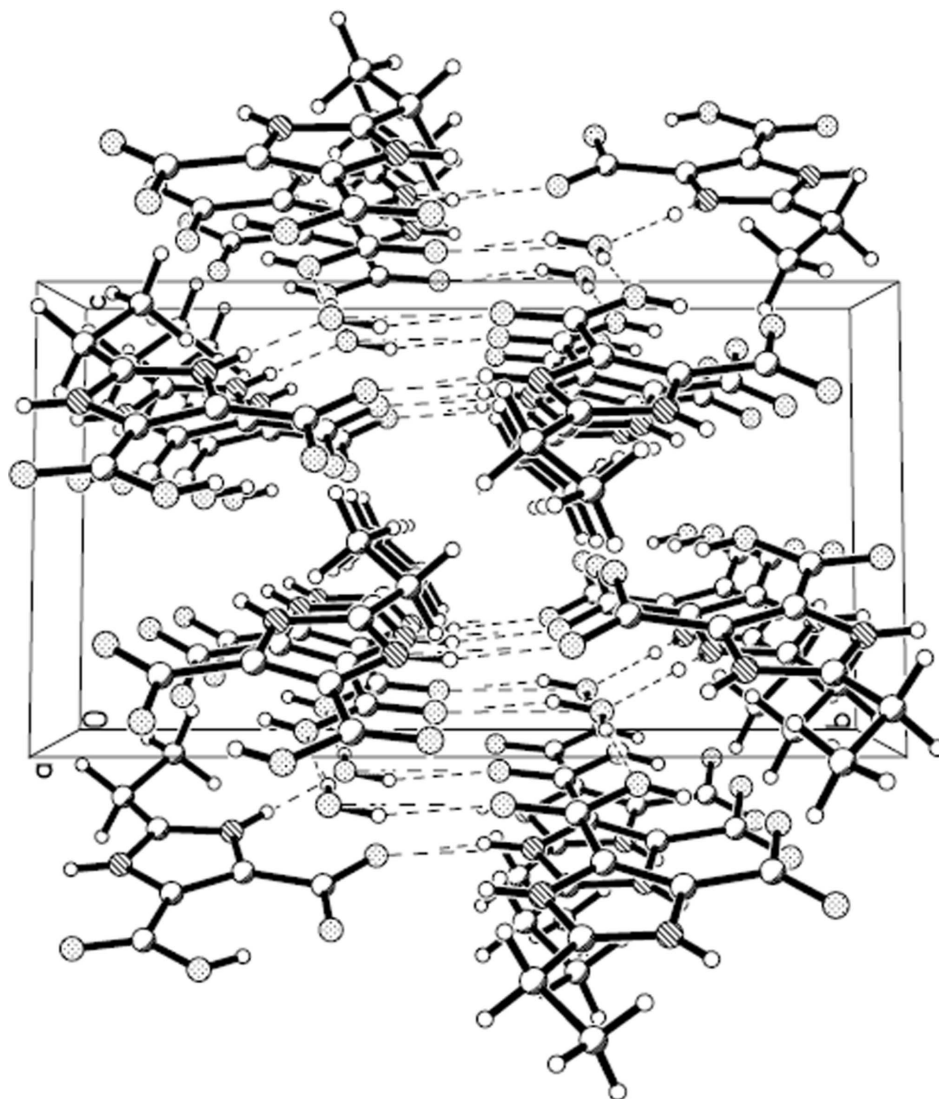
The organic molecule powder was obtained from 2-ethylbenzimidazole according to a literature procedure (Sun *et al.* 2006), then the 2-ethyl-1*H*-imidazole-4,5-dicarboxylate (0.5 mmol, 0.9 g) was dissolved in 15 ml of H<sub>2</sub>O solution with the pH of 6 adjusted by NaOH, colorless crystals were obtained by slow evaporation of the solvent at room temperature.

### S3. Refinement

H atoms of the water molecule were located in a difference Fourier map and refined as riding with an O—H distance restraint of 0.84 (1) Å, with  $U_{\text{iso}}(\text{H}) = 1.5 U_{\text{eq}}$ . The H···H distances within the water molecules were restrained to 1.39 (1) Å. Carboxyl H atoms were located in a difference map but were refined as riding on the parent O atoms with O—H = 0.82 Å with  $U_{\text{iso}}(\text{H}) = 1.5 U_{\text{eq}}(\text{O})$ . Carbon and nitrogen bound H atoms were placed at calculated positions and were treated as riding on the parent C or N atoms with C—H = 0.96 (methyl), 0.97 (methylene) and N—H = 0.86 Å,  $U_{\text{iso}}(\text{H}) = 1.2$  or  $1.5 U_{\text{eq}}(\text{C}, \text{N})$ .

**Figure 1**

The structure of the title compound, showing the atomic numbering scheme. Non-H atoms are shown with 30% probability displacement ellipsoids.

**Figure 2**

A view of the three-dimensional network constructed by O—H...O and N—H...O hydrogen bonding interactions

### 2-Ethyl-1H-imidazole-4-carboxylate monohydrate

#### Crystal data

$C_7H_{10}N_2O_5$

$M_r = 202.17$

Monoclinic,  $P2_1/c$

Hall symbol:  $-P\ 2_1/c$

$a = 7.6132\ (6)\ \text{\AA}$

$b = 14.3779\ (16)\ \text{\AA}$

$c = 7.9396\ (8)\ \text{\AA}$

$\beta = 97.799\ (1)^\circ$

$V = 861.04\ (15)\ \text{\AA}^3$

$Z = 4$

$F(000) = 424$

$D_x = 1.560\ \text{Mg m}^{-3}$

Mo  $K\alpha$  radiation,  $\lambda = 0.71073\ \text{\AA}$

Cell parameters from 1702 reflections

$\theta = 2.5\text{--}25.9^\circ$

$\mu = 0.13\ \text{mm}^{-1}$

$T = 298\ \text{K}$

Block, colorless

$0.50 \times 0.41 \times 0.40\ \text{mm}$

*Data collection*

Bruker SMART 1000 CCD area-detector  
diffractometer  
Radiation source: fine-focus sealed tube  
Graphite monochromator  
 $\varphi$  and  $\omega$  scans  
Absorption correction: multi-scan  
(*SADABS*; Bruker, 2007)  
 $T_{\min} = 0.936$ ,  $T_{\max} = 0.948$

4224 measured reflections  
1510 independent reflections  
1166 reflections with  $I > 2\sigma(I)$   
 $R_{\text{int}} = 0.031$   
 $\theta_{\max} = 25.0^\circ$ ,  $\theta_{\min} = 2.7^\circ$   
 $h = -9 \rightarrow 8$   
 $k = -17 \rightarrow 13$   
 $l = -9 \rightarrow 7$

*Refinement*

Refinement on  $F^2$   
Least-squares matrix: full  
 $R[F^2 > 2\sigma(F^2)] = 0.038$   
 $wR(F^2) = 0.106$   
 $S = 1.05$   
1510 reflections  
129 parameters  
3 restraints  
Primary atom site location: structure-invariant  
direct methods  
Secondary atom site location: difference Fourier  
map

Hydrogen site location: inferred from  
neighbouring sites  
H-atom parameters constrained  
 $w = 1/[\sigma^2(F_o^2) + (0.047P)^2 + 0.3916P]$   
where  $P = (F_o^2 + 2F_c^2)/3$   
 $(\Delta/\sigma)_{\max} < 0.001$   
 $\Delta\rho_{\max} = 0.28 \text{ e } \text{\AA}^{-3}$   
 $\Delta\rho_{\min} = -0.21 \text{ e } \text{\AA}^{-3}$   
Extinction correction: *SHELXL*,  
 $F_c^* = kFc[1 + 0.001xFc^2\lambda^3/\sin(2\theta)]^{-1/4}$   
Extinction coefficient: 0.060 (5)

*Special details*

**Geometry.** All esds (except the esd in the dihedral angle between two l.s. planes) are estimated using the full covariance matrix. The cell esds are taken into account individually in the estimation of esds in distances, angles and torsion angles; correlations between esds in cell parameters are only used when they are defined by crystal symmetry. An approximate (isotropic) treatment of cell esds is used for estimating esds involving l.s. planes.

**Refinement.** Refinement of  $F^2$  against ALL reflections. The weighted R-factor  $wR$  and goodness of fit  $S$  are based on  $F^2$ , conventional R-factors  $R$  are based on  $F$ , with  $F$  set to zero for negative  $F^2$ . The threshold expression of  $F^2 > 2\sigma(F^2)$  is used only for calculating R-factors(gt) etc. and is not relevant to the choice of reflections for refinement. R-factors based on  $F^2$  are statistically about twice as large as those based on  $F$ , and R-factors based on ALL data will be even larger.

*Fractional atomic coordinates and isotropic or equivalent isotropic displacement parameters ( $\text{\AA}^2$ )*

	<i>x</i>	<i>y</i>	<i>z</i>	$U_{\text{iso}}^*/U_{\text{eq}}$
N1	0.4705 (2)	0.42162 (11)	0.2301 (2)	0.0314 (4)
H1	0.4860	0.4805	0.2208	0.038*
N2	0.3607 (2)	0.29056 (11)	0.2927 (2)	0.0305 (4)
H2	0.2932	0.2499	0.3308	0.037*
O1	0.7740 (2)	0.46097 (10)	0.0811 (2)	0.0517 (5)
O2	0.8238 (2)	0.31103 (10)	0.0434 (2)	0.0457 (5)
H2A	0.7770	0.2619	0.0653	0.069*
O3	0.6974 (2)	0.16119 (9)	0.1124 (2)	0.0433 (4)
O4	0.4800 (2)	0.11124 (9)	0.2502 (2)	0.0436 (4)
O1W	0.8455 (2)	0.65550 (10)	0.0862 (2)	0.0501 (5)
H1W	0.9476	0.6582	0.0543	0.075*
H2W	0.8189	0.5995	0.1057	0.075*
C1	0.7364 (3)	0.37964 (14)	0.0950 (3)	0.0356 (5)
C2	0.5789 (3)	0.35434 (13)	0.1777 (2)	0.0295 (5)
C3	0.5090 (3)	0.27125 (13)	0.2173 (2)	0.0282 (5)

C4	0.5648 (3)	0.17372 (13)	0.1935 (3)	0.0314 (5)
C5	0.3383 (3)	0.38238 (13)	0.2972 (3)	0.0310 (5)
C6	0.1908 (3)	0.43371 (15)	0.3579 (3)	0.0466 (6)
H6A	0.1212	0.4632	0.2610	0.056*
H6B	0.2403	0.4827	0.4340	0.056*
C7	0.0694 (3)	0.37559 (17)	0.4485 (3)	0.0528 (7)
H7A	0.0221	0.3257	0.3758	0.079*
H7B	-0.0259	0.4135	0.4773	0.079*
H7C	0.1345	0.3504	0.5503	0.079*

*Atomic displacement parameters (Å<sup>2</sup>)*

	$U^{11}$	$U^{22}$	$U^{33}$	$U^{12}$	$U^{13}$	$U^{23}$
N1	0.0332 (9)	0.0177 (8)	0.0455 (11)	0.0005 (7)	0.0140 (8)	0.0015 (7)
N2	0.0316 (9)	0.0200 (8)	0.0425 (10)	-0.0005 (6)	0.0145 (8)	0.0011 (7)
O1	0.0503 (10)	0.0288 (9)	0.0821 (13)	-0.0062 (7)	0.0310 (9)	0.0027 (8)
O2	0.0437 (9)	0.0295 (8)	0.0707 (11)	0.0011 (7)	0.0321 (8)	0.0009 (7)
O3	0.0479 (9)	0.0275 (8)	0.0601 (10)	0.0068 (6)	0.0272 (8)	-0.0009 (7)
O4	0.0460 (9)	0.0202 (7)	0.0690 (11)	0.0006 (6)	0.0236 (8)	0.0029 (7)
O1W	0.0479 (10)	0.0283 (8)	0.0813 (12)	-0.0006 (7)	0.0344 (9)	-0.0023 (8)
C1	0.0344 (11)	0.0281 (11)	0.0466 (13)	0.0005 (9)	0.0137 (10)	0.0017 (9)
C2	0.0306 (11)	0.0234 (10)	0.0355 (11)	0.0029 (8)	0.0087 (9)	-0.0001 (8)
C3	0.0296 (10)	0.0222 (10)	0.0340 (11)	0.0015 (8)	0.0090 (9)	-0.0005 (8)
C4	0.0337 (11)	0.0227 (10)	0.0389 (12)	0.0023 (8)	0.0092 (9)	-0.0002 (9)
C5	0.0313 (11)	0.0222 (10)	0.0414 (12)	0.0011 (8)	0.0124 (9)	0.0005 (9)
C6	0.0433 (13)	0.0273 (12)	0.0751 (17)	0.0048 (9)	0.0295 (13)	-0.0017 (11)
C7	0.0468 (14)	0.0451 (14)	0.0734 (17)	0.0080 (11)	0.0334 (13)	0.0037 (13)

*Geometric parameters (Å, °)*

N1—C5	1.327 (2)	O1W—H2W	0.8501
N1—C2	1.372 (2)	C1—C2	1.488 (3)
N1—H1	0.8600	C2—C3	1.362 (3)
N2—C5	1.332 (3)	C3—C4	1.485 (3)
N2—C3	1.376 (2)	C5—C6	1.478 (3)
N2—H2	0.8600	C6—C7	1.500 (3)
O1—C1	1.212 (2)	C6—H6A	0.9700
O2—C1	1.288 (2)	C6—H6B	0.9700
O2—H2A	0.8200	C7—H7A	0.9600
O3—C4	1.281 (2)	C7—H7B	0.9600
O4—C4	1.227 (2)	C7—H7C	0.9600
O1W—H1W	0.8500		
C5—N1—C2	110.02 (16)	O4—C4—C3	118.07 (17)
C5—N1—H1	125.0	O3—C4—C3	117.11 (17)
C2—N1—H1	125.0	N1—C5—N2	107.67 (16)
C5—N2—C3	109.11 (15)	N1—C5—C6	124.74 (17)
C5—N2—H2	125.4	N2—C5—C6	127.55 (17)

C3—N2—H2	125.4	C5—C6—C7	115.01 (18)
C1—O2—H2A	109.5	C5—C6—H6A	108.5
H1W—O1W—H2W	110.3	C7—C6—H6A	108.5
O1—C1—O2	124.86 (19)	C5—C6—H6B	108.5
O1—C1—C2	119.35 (18)	C7—C6—H6B	108.5
O2—C1—C2	115.80 (17)	H6A—C6—H6B	107.5
C3—C2—N1	106.15 (16)	C6—C7—H7A	109.5
C3—C2—C1	132.84 (18)	C6—C7—H7B	109.5
N1—C2—C1	121.01 (17)	H7A—C7—H7B	109.5
C2—C3—N2	107.05 (16)	C6—C7—H7C	109.5
C2—C3—C4	132.14 (17)	H7A—C7—H7C	109.5
N2—C3—C4	120.81 (17)	H7B—C7—H7C	109.5
O4—C4—O3	124.82 (17)		
C5—N1—C2—C3	-0.7 (2)	C5—N2—C3—C4	-179.30 (18)
C5—N1—C2—C1	179.02 (18)	C2—C3—C4—O4	176.4 (2)
O1—C1—C2—C3	-176.8 (2)	N2—C3—C4—O4	-3.4 (3)
O2—C1—C2—C3	2.9 (4)	C2—C3—C4—O3	-4.6 (3)
O1—C1—C2—N1	3.5 (3)	N2—C3—C4—O3	175.56 (18)
O2—C1—C2—N1	-176.74 (19)	C2—N1—C5—N2	1.3 (2)
N1—C2—C3—N2	-0.1 (2)	C2—N1—C5—C6	-176.3 (2)
C1—C2—C3—N2	-179.8 (2)	C3—N2—C5—N1	-1.3 (2)
N1—C2—C3—C4	-179.9 (2)	C3—N2—C5—C6	176.2 (2)
C1—C2—C3—C4	0.4 (4)	N1—C5—C6—C7	-172.7 (2)
C5—N2—C3—C2	0.9 (2)	N2—C5—C6—C7	10.2 (4)

Hydrogen-bond geometry (Å, °)

<i>D</i> —H... <i>A</i>	<i>D</i> —H	H... <i>A</i>	<i>D</i> ... <i>A</i>	<i>D</i> —H... <i>A</i>
N1—H1...O4 <sup>i</sup>	0.86	1.91	2.754 (2)	168
N2—H2...O1W <sup>ii</sup>	0.86	1.89	2.751 (2)	177
O2—H2A...O3	0.82	1.63	2.452 (2)	176
O1W—H1W...O2 <sup>iii</sup>	0.85	2.05	2.8863 (19)	169
O1W—H2W...O1	0.85	2.03	2.849 (2)	163

Symmetry codes: (i)  $-x+1, y+1/2, -z+1/2$ ; (ii)  $-x+1, y-1/2, -z+1/2$ ; (iii)  $-x+2, -y+1, -z$ .