

Acta Crystallographica Section E

Structure Reports

Online

ISSN 1600-5368

# (*E*)-6-Bromo-3-[2-[2-(4-chlorobenzylidene)hydrazinyl]thiazol-5-yl]-2*H*-chromen-2-one

 Afsheen Arshad,<sup>a</sup> Hasnah Osman,<sup>a‡</sup> Chan Kit Lam,<sup>b</sup> Madhukar Hemamalini<sup>c</sup> and Hoong-Kun Fun<sup>c\*§</sup>

<sup>a</sup>School of Chemical Sciences, Universiti Sains Malaysia, 11800 USM, Penang, Malaysia, <sup>b</sup>School of Pharmaceutical Sciences, Universiti Sains Malaysia, 11800 USM, Penang, Malaysia, and <sup>c</sup>X-ray Crystallography Unit, School of Physics, Universiti Sains Malaysia, 11800 USM, Penang, Malaysia  
Correspondence e-mail: hkfun@usm.my

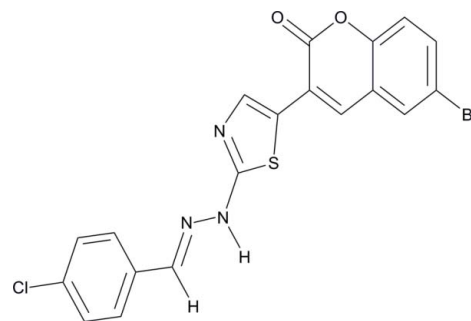
Received 19 March 2011; accepted 25 March 2011

Key indicators: single-crystal X-ray study;  $T = 296$  K; mean  $\sigma(\text{C}-\text{C}) = 0.005$  Å;  $R$  factor = 0.049;  $wR$  factor = 0.138; data-to-parameter ratio = 22.2.

In the title compound,  $\text{C}_{19}\text{H}_{11}\text{N}_3\text{O}_2\text{SClBr}$ , the chromene ring system and the thiazole ring are each approximately planar, with maximum deviations of 0.033 (3) Å and 0.006 (3) Å, respectively. The molecule adopts an *E* configuration about the central  $\text{C}=\text{N}$  double bond. The central thiazole ring makes dihedral angles of 9.06 (14)° and 12.07 (11)° with the chloro-substituted phenyl ring and the chromene ring, respectively. The molecular structure features a short  $\text{C}-\text{H}\cdots\text{O}$  contact, which generates an *S*(6) ring motif. The crystal structure is stabilized by intermolecular  $\text{N}-\text{H}\cdots\text{O}$  hydrogen bonds, which link the molecules into chains along the *b* axis.  $\pi-\pi$  stacking interactions [centroid-centroid distance = 3.4813 (15) Å] are also present.

## Related literature

For the biological activity and applications of thiazolyl coumarin derivatives, see: Samsonova *et al.* (2007); Bullock *et al.* (2009); Siddiqui *et al.* (2009); Kalkhambkar *et al.* (2007); Kamal *et al.* (2009); Desai *et al.* (2008). For the synthesis of the title compound, see: Bakkar *et al.* (2003); Vijesh *et al.* (2010). For graph-set notation, see: Bernstein *et al.* (1995).



## Experimental

### Crystal data

$\text{C}_{19}\text{H}_{11}\text{BrClN}_3\text{O}_2\text{S}$   
 $M_r = 460.73$   
Monoclinic,  $C2/c$   
 $a = 30.5837$  (7) Å  
 $b = 13.6682$  (3) Å  
 $c = 9.0454$  (1) Å  
 $\beta = 90.161$  (2)°

$V = 3781.18$  (13) Å<sup>3</sup>  
 $Z = 8$   
Mo  $K\alpha$  radiation  
 $\mu = 2.45$  mm<sup>-1</sup>  
 $T = 296$  K  
 $0.21 \times 0.16 \times 0.07$  mm

### Data collection

Bruker SMART APEXII CCD area-detector diffractometer  
Absorption correction: multi-scan (*SADABS*; Bruker, 2009)  
 $T_{\min} = 0.628$ ,  $T_{\max} = 0.842$

29664 measured reflections  
5499 independent reflections  
2216 reflections with  $I > 2\sigma(I)$   
 $R_{\text{int}} = 0.058$

### Refinement

$R[F^2 > 2\sigma(F^2)] = 0.049$   
 $wR(F^2) = 0.138$   
 $S = 0.97$   
5499 reflections  
248 parameters

H atoms treated by a mixture of independent and constrained refinement  
 $\Delta\rho_{\max} = 0.31$  e Å<sup>-3</sup>  
 $\Delta\rho_{\min} = -0.34$  e Å<sup>-3</sup>

**Table 1**

Hydrogen-bond geometry (Å, °).

<i>D</i> — <i>H</i> ⋯ <i>A</i>	<i>D</i> — <i>H</i>	<i>H</i> ⋯ <i>A</i>	<i>D</i> ⋯ <i>A</i>	<i>D</i> — <i>H</i> ⋯ <i>A</i>
$\text{N2}-\text{H1N2}\cdots\text{O2}^{\text{i}}$	0.81 (4)	2.16 (4)	2.957 (4)	169 (4)
$\text{C11}-\text{H11A}\cdots\text{O2}$	0.93	2.35	2.878 (4)	115

 Symmetry code: (i)  $-x + \frac{1}{2}, y + \frac{1}{2}, -z + \frac{3}{2}$ .

Data collection: *APEX2* (Bruker, 2009); cell refinement: *SAINTE* (Bruker, 2009); data reduction: *SAINTE*; program(s) used to solve structure: *SHELXTL* (Sheldrick, 2008); program(s) used to refine structure: *SHELXTL*; molecular graphics: *SHELXTL*; software used to prepare material for publication: *SHELXTL* and *PLATON* (Spek, 2009).

AA, HO, CKL thank the Malaysian Government and Universiti Sains Malaysia (USM) for a grant [1001/PKimia/811133] to conduct this work. AA also thanks Universiti Sains Malaysia for a fellowship. HKF and MH thank the Malaysian Government and Universiti Sains Malaysia for the Research University Grant No. 1001/PFIZIK/811160. MH also thanks Universiti Sains Malaysia for a post-doctoral research fellowship.

<sup>‡</sup> Additional correspondence author, e-mail: ohasnah@usm.my.

<sup>§</sup> Thomson Reuters ResearcherID: A-3561-2009.

---

Supplementary data and figures for this paper are available from the IUCr electronic archives (Reference: SJ5122).

---

## References

- Bakkar, M., Siddiqi, M. Y. & Monshi, M. (2003). *Synth. React. Inorg., Met.-Org. Nano-Met. Chem.* **33**, 1157–1169.
- Bernstein, J., Davis, R. E., Shimoni, L. & Chang, N.-L. (1995). *Angew. Chem. Int. Ed. Engl.* **34**, 1555–1573.
- Bruker (2009). *APEX2, SAINT and SADABS*. Bruker AXS Inc., Madison, Wisconsin, USA.
- Bullock, S. J., Felton, C. E., Fennessy, R. V., Harding, L. P., Andrews, M., Pope, S. J. A., Rice, C. R. & Riis-Johannessen, T. (2009). *Dalton Trans.* pp. 10570–10573.
- Desai, J., Desai, C. & Desai, K. (2008). *J. Iran. Chem. Soc.* **5**, 67–73.
- Kalkhambkar, R., Kulkarni, G., Shivkumar, H. & Rao, R. (2007). *Eur. J. Med. Chem.* **42**, 1272–1276.
- Kamal, A., Adil, S., Tamboli, J., Siddardha, B. & Murthy, U. (2009). *Lett. Drug Des. Discov.* **6**, 201–209.
- Samsonova, L., Gadirov, R., Ishchenko, V. & Khilya, O. (2007). *Optics Spectroscopy*, **102**, 878–884.
- Sheldrick, G. M. (2008). *Acta Cryst.* **A64**, 112–122.
- Siddiqui, N., Arshad, M. & Khan, S. (2009). *Acta. Pol. Pharm.-Drug Res.* **66**, 161–167.
- Spek, A. L. (2009). *Acta Cryst.* **D65**, 148–155.
- Vijesh, A., Isloor, A. M., Prabhu, V., Ahmad, S. & Malladi, S. (2010). *Eur. J. Med. Chem.* **45**, 5460–5464.

## supporting information

*Acta Cryst.* (2011). E67, o1007–o1008 [doi:10.1107/S1600536811011172]

## (*E*)-6-Bromo-3-{2-[2-(4-chlorobenzylidene)hydrazinyl]thiazol-5-yl}-2*H*-chromen-2-one

Afsheen Arshad, Hasnah Osman, Chan Kit Lam, Madhukar Hemamalini and Hoong-Kun Fun

### S1. Comment

Thiazolyl coumarin derivatives are reported to be associated with diverse applications. They have industrial applications as fluorescent probes, laser dyes (Samsonova *et al.*, 2007) and luminescents (Bullock *et al.*, 2009). They also exhibit a variety of biological activities as anticonvulsants (Siddiqui *et al.*, 2009), analgesics, anti-inflammatory (Kalkhambkar *et al.*, 2007) and antimicrobial agents (Kamal *et al.*, 2009; Desai *et al.*, 2008). The title compound is a new derivative of thiazolylcoumarin. We present here its crystal structure.

The molecular structure of the compound, (I), displays a trans configuration with respect to the C13=N3 double bond. The chromene (O1/C1–C9) ring system and thiazole (S1/N1/C10–C12) ring are approximately planar, with the maximum deviation of 0.033 (3) Å for atom C2 and 0.006 (3) Å for atom C12, respectively. The central thiazole (S1/N1/C10–C12) ring makes dihedral angles of 9.06 (14)° and 12.07 (11)° with the chloro-substituted phenyl (C14–C19) ring and the chromene (O1/C1–C9) ring, respectively.

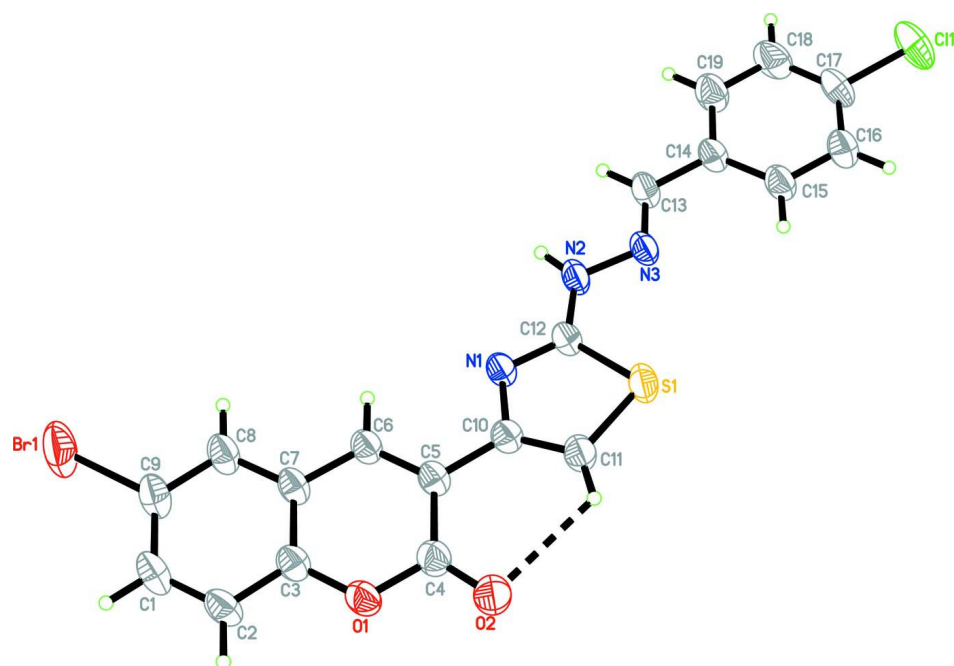
In the crystal packing (Fig. 2), the molecular structure is stabilized by an intramolecular C—H···O (Table 1) hydrogen bond which generates an *S*(6) (Bernstein *et al.*, 1995) ring motif. Furthermore, the crystal structure is stabilized by intermolecular N—H···O hydrogen bonds which link the molecules into chains parallel to the *b*-axis.  $\pi\cdots\pi$  [centroid-centroid distance = 3.4813 (15) Å; 1/2-*X*, 1/2-*Y*, 2-*Z*] stacking interactions between the thiazole (S1/N1/C10–C12) and pyran (O1/C3–C7) rings are also observed.

### S2. Experimental

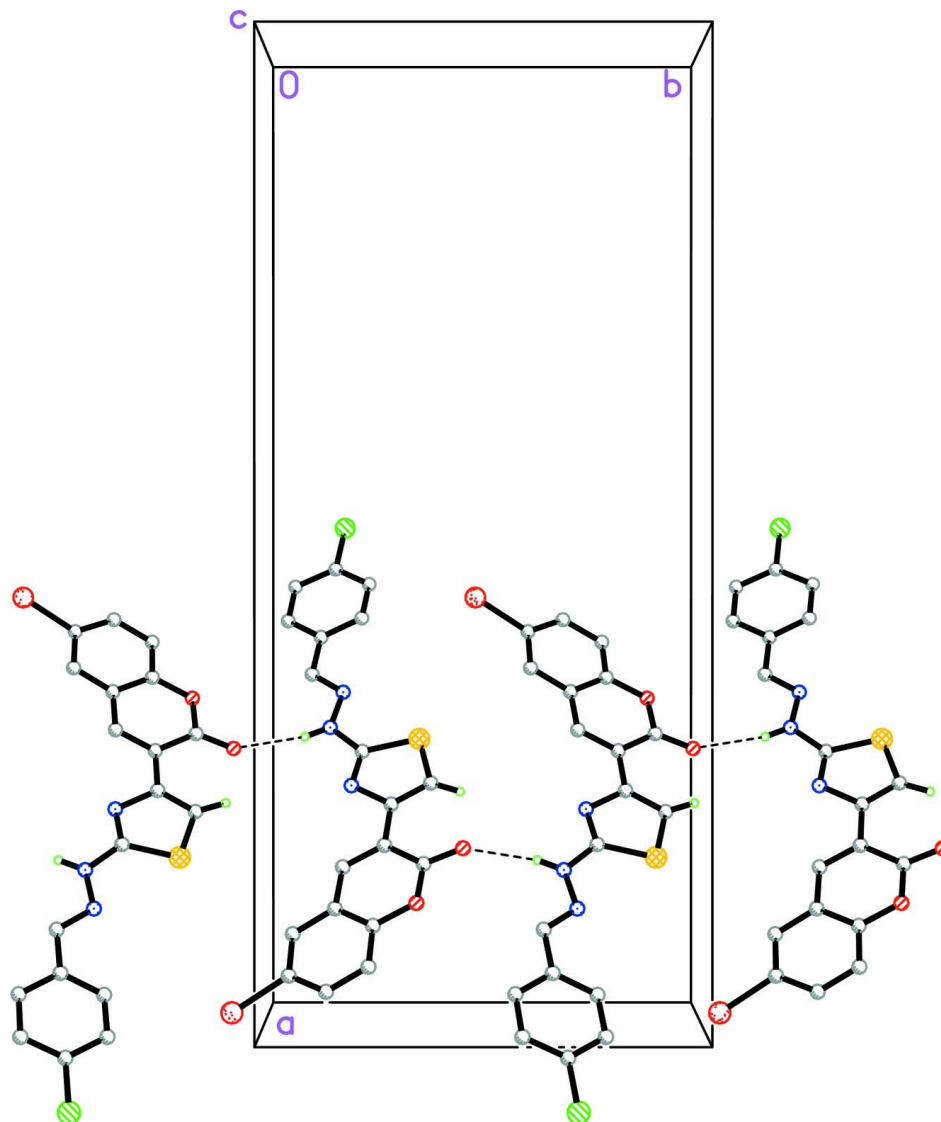
4-chlorobenzylidene thiosemicarbazone (Bakkar *et al.*, 2003) and 6-bromo-3-(2-bromoacetyl)-2*H*-chromen-2-one (Vijesh *et al.*, 2010) were synthesized as reported in the literature. The title compound (I) was obtained by the cyclocondensation of 4-chlorobenzylidene thiosemicarbazone with 6-bromo-3-(2-bromoacetyl)-2*H*-chromen-2-one. A solution of 6-bromo-3-(2-bromoacetyl)-2*H*-chromen-2-one (2.5 mmol) and 4-chlorobenzylidene thiosemicarbazone (2.5 mmol) in chloroform-ethanol (2:1) was refluxed for 2 hours at 60°C to yield a dense yellow precipitate. The reaction mixture was cooled in ice bath and basified with ammonia to pH 7–8. The title compound (I) was recrystallized from ethanol-chloroform (1:2) to give yellow block like crystals.

### S3. Refinement

Atom H1N2 was located from a difference Fourier map and refined freely [N–H = 0.81 (4) Å]. The remaining H atoms were positioned geometrically [C–H = 0.93 Å] and were refined using a riding model, with  $U_{\text{iso}}(\text{H}) = 1.2 U_{\text{eq}}(\text{C})$ . The highest residual electron density peak is located at 1.20 Å from Br1 and the deepest hole 0.91 located at from Br1.

**Figure 1**

The asymmetric unit of the title compound, showing 30% probability displacement ellipsoids and the atom-numbering scheme. The intramolecular hydrogen bond is shown as a dashed line.



**Figure 2**

The crystal packing of the title compound (I).

**(E)-6-Bromo-3-{2-[2-(4-chlorobenzylidene)hydrazinyl]thiazol-5-yl}-2H-chromen-2-one**

*Crystal data*

$C_{19}H_{11}BrClN_3O_2S$

$M_r = 460.73$

Monoclinic,  $C2/c$

Hall symbol:  $-C\ 2yc$

$a = 30.5837\ (7)\ \text{\AA}$

$b = 13.6682\ (3)\ \text{\AA}$

$c = 9.0454\ (1)\ \text{\AA}$

$\beta = 90.161\ (2)^\circ$

$V = 3781.18\ (13)\ \text{\AA}^3$

$Z = 8$

$F(000) = 1840$

$D_x = 1.619\ \text{Mg m}^{-3}$

Mo  $K\alpha$  radiation,  $\lambda = 0.71073\ \text{\AA}$

Cell parameters from 3684 reflections

$\theta = 2.5\text{--}23.1^\circ$

$\mu = 2.45\ \text{mm}^{-1}$

$T = 296\ \text{K}$

Block, yellow

$0.21 \times 0.16 \times 0.07\ \text{mm}$

Data collection

Bruker SMART APEXII CCD area-detector  
diffractometer  
Radiation source: fine-focus sealed tube  
Graphite monochromator  
 $\varphi$  and  $\omega$  scans  
Absorption correction: multi-scan  
(SADABS; Bruker, 2009)  
 $T_{\min} = 0.628$ ,  $T_{\max} = 0.842$

29664 measured reflections  
5499 independent reflections  
2216 reflections with  $I > 2\sigma(I)$   
 $R_{\text{int}} = 0.058$   
 $\theta_{\text{max}} = 30.0^\circ$ ,  $\theta_{\text{min}} = 2.5^\circ$   
 $h = -40 \rightarrow 42$   
 $k = -19 \rightarrow 19$   
 $l = -12 \rightarrow 12$

Refinement

Refinement on  $F^2$   
Least-squares matrix: full  
 $R[F^2 > 2\sigma(F^2)] = 0.049$   
 $wR(F^2) = 0.138$   
 $S = 0.97$   
5499 reflections  
248 parameters  
0 restraints  
Primary atom site location: structure-invariant  
direct methods

Secondary atom site location: difference Fourier  
map  
Hydrogen site location: inferred from  
neighbouring sites  
H atoms treated by a mixture of independent  
and constrained refinement  
 $w = 1/[\sigma^2(F_o^2) + (0.0551P)^2 + 0.960P]$   
where  $P = (F_o^2 + 2F_c^2)/3$   
 $(\Delta/\sigma)_{\text{max}} = 0.001$   
 $\Delta\rho_{\text{max}} = 0.31 \text{ e } \text{\AA}^{-3}$   
 $\Delta\rho_{\text{min}} = -0.34 \text{ e } \text{\AA}^{-3}$

Special details

**Geometry.** All esds (except the esd in the dihedral angle between two l.s. planes) are estimated using the full covariance matrix. The cell esds are taken into account individually in the estimation of esds in distances, angles and torsion angles; correlations between esds in cell parameters are only used when they are defined by crystal symmetry. An approximate (isotropic) treatment of cell esds is used for estimating esds involving l.s. planes.

**Refinement.** Refinement of  $F^2$  against ALL reflections. The weighted R-factor  $wR$  and goodness of fit  $S$  are based on  $F^2$ , conventional R-factors  $R$  are based on  $F$ , with  $F$  set to zero for negative  $F^2$ . The threshold expression of  $F^2 > 2\sigma(F^2)$  is used only for calculating R-factors(gt) etc. and is not relevant to the choice of reflections for refinement. R-factors based on  $F^2$  are statistically about twice as large as those based on  $F$ , and R-factors based on ALL data will be even larger.

Fractional atomic coordinates and isotropic or equivalent isotropic displacement parameters ( $\text{\AA}^2$ )

	<i>x</i>	<i>y</i>	<i>z</i>	$U_{\text{iso}}^*/U_{\text{eq}}$
Br1	0.437955 (16)	0.51731 (4)	1.13651 (6)	0.1287 (3)
Cl1	-0.00680 (3)	0.31602 (10)	-0.05275 (11)	0.1132 (4)
S1	0.19723 (3)	0.13873 (7)	0.60268 (9)	0.0712 (3)
O1	0.33937 (7)	0.13971 (15)	1.0762 (2)	0.0679 (6)
O2	0.29214 (8)	0.04381 (19)	0.9684 (3)	0.0902 (7)
N1	0.23951 (7)	0.28268 (18)	0.7199 (2)	0.0575 (6)
N2	0.18701 (9)	0.3330 (2)	0.5513 (3)	0.0698 (8)
N3	0.15428 (8)	0.3072 (2)	0.4558 (2)	0.0629 (7)
C1	0.41549 (11)	0.3221 (3)	1.2104 (4)	0.0778 (10)
H1A	0.4381	0.3273	1.2790	0.093*
C2	0.39334 (10)	0.2362 (3)	1.1954 (3)	0.0738 (9)
H2A	0.4009	0.1825	1.2533	0.089*
C3	0.35967 (9)	0.2291 (2)	1.0938 (3)	0.0609 (8)
C4	0.30642 (10)	0.1259 (3)	0.9763 (3)	0.0652 (8)
C5	0.29156 (9)	0.2090 (2)	0.8891 (3)	0.0556 (7)

C6	0.31145 (9)	0.2961 (2)	0.9077 (3)	0.0591 (8)
H6A	0.3018	0.3493	0.8524	0.071*
C7	0.34686 (9)	0.3096 (2)	1.0094 (3)	0.0601 (8)
C8	0.36987 (9)	0.3966 (3)	1.0262 (4)	0.0715 (9)
H8A	0.3620	0.4515	0.9716	0.086*
C9	0.40440 (10)	0.4013 (3)	1.1240 (4)	0.0766 (10)
C10	0.25573 (9)	0.1967 (2)	0.7827 (3)	0.0569 (7)
C11	0.23679 (10)	0.1131 (2)	0.7328 (3)	0.0662 (8)
H11A	0.2442	0.0505	0.7645	0.079*
C12	0.20879 (9)	0.2616 (2)	0.6261 (3)	0.0583 (8)
C13	0.13768 (10)	0.3778 (3)	0.3809 (3)	0.0666 (8)
H13A	0.1486	0.4408	0.3935	0.080*
C14	0.10205 (10)	0.3614 (2)	0.2765 (3)	0.0609 (8)
C15	0.08312 (10)	0.2710 (3)	0.2569 (3)	0.0713 (9)
H15A	0.0931	0.2183	0.3128	0.086*
C16	0.04983 (10)	0.2566 (3)	0.1567 (3)	0.0763 (10)
H16A	0.0377	0.1948	0.1440	0.092*
C17	0.03487 (10)	0.3341 (3)	0.0762 (3)	0.0767 (10)
C18	0.05284 (12)	0.4249 (3)	0.0907 (4)	0.0925 (12)
H18A	0.0426	0.4771	0.0344	0.111*
C19	0.08655 (11)	0.4378 (3)	0.1909 (4)	0.0846 (10)
H19A	0.0991	0.4994	0.2010	0.102*
H1N2	0.1963 (12)	0.388 (3)	0.547 (4)	0.092 (14)*

*Atomic displacement parameters (Å<sup>2</sup>)*

	$U^{11}$	$U^{22}$	$U^{33}$	$U^{12}$	$U^{13}$	$U^{23}$
Br1	0.1122 (4)	0.0915 (4)	0.1821 (5)	-0.0164 (3)	-0.0729 (4)	-0.0212 (3)
Cl1	0.0812 (6)	0.1664 (12)	0.0917 (6)	0.0210 (7)	-0.0463 (5)	-0.0255 (7)
S1	0.0712 (5)	0.0676 (6)	0.0748 (5)	-0.0092 (4)	-0.0221 (4)	-0.0101 (4)
O1	0.0663 (13)	0.0633 (15)	0.0739 (13)	0.0083 (11)	-0.0199 (11)	0.0053 (11)
O2	0.0935 (17)	0.0603 (16)	0.1165 (19)	-0.0022 (14)	-0.0368 (14)	0.0108 (15)
N1	0.0574 (14)	0.0579 (16)	0.0572 (13)	0.0024 (12)	-0.0134 (12)	-0.0054 (12)
N2	0.0731 (18)	0.065 (2)	0.0715 (17)	-0.0067 (16)	-0.0335 (14)	-0.0020 (16)
N3	0.0618 (15)	0.0675 (18)	0.0593 (14)	-0.0034 (13)	-0.0222 (12)	-0.0035 (13)
C1	0.062 (2)	0.092 (3)	0.079 (2)	0.012 (2)	-0.0280 (17)	-0.015 (2)
C2	0.071 (2)	0.078 (2)	0.073 (2)	0.0179 (19)	-0.0248 (17)	0.0020 (19)
C3	0.0561 (17)	0.064 (2)	0.0623 (18)	0.0080 (16)	-0.0080 (15)	-0.0052 (16)
C4	0.0615 (19)	0.059 (2)	0.075 (2)	0.0033 (17)	-0.0123 (16)	0.0000 (18)
C5	0.0544 (16)	0.057 (2)	0.0556 (16)	0.0079 (15)	-0.0070 (13)	-0.0087 (15)
C6	0.0574 (17)	0.0558 (19)	0.0639 (17)	0.0043 (15)	-0.0139 (14)	-0.0037 (15)
C7	0.0523 (16)	0.064 (2)	0.0638 (18)	0.0106 (15)	-0.0140 (14)	-0.0096 (16)
C8	0.0622 (19)	0.063 (2)	0.089 (2)	0.0099 (17)	-0.0253 (17)	-0.0119 (19)
C9	0.066 (2)	0.073 (2)	0.091 (2)	0.0052 (18)	-0.0242 (18)	-0.022 (2)
C10	0.0553 (17)	0.058 (2)	0.0577 (17)	0.0031 (15)	-0.0051 (14)	-0.0033 (15)
C11	0.0664 (19)	0.058 (2)	0.074 (2)	0.0010 (16)	-0.0174 (16)	-0.0036 (17)
C12	0.0579 (17)	0.064 (2)	0.0535 (16)	0.0003 (15)	-0.0114 (14)	-0.0064 (15)
C13	0.0686 (19)	0.068 (2)	0.0634 (18)	-0.0012 (17)	-0.0199 (16)	-0.0117 (17)

C14	0.0605 (18)	0.063 (2)	0.0592 (17)	0.0073 (16)	-0.0150 (15)	-0.0078 (16)
C15	0.0673 (19)	0.078 (2)	0.0688 (19)	0.0023 (18)	-0.0228 (16)	-0.0028 (18)
C16	0.066 (2)	0.085 (3)	0.078 (2)	-0.0002 (19)	-0.0202 (17)	-0.011 (2)
C17	0.061 (2)	0.106 (3)	0.0624 (19)	0.017 (2)	-0.0232 (16)	-0.015 (2)
C18	0.095 (3)	0.095 (3)	0.088 (3)	0.025 (2)	-0.037 (2)	0.005 (2)
C19	0.089 (2)	0.074 (2)	0.090 (2)	0.009 (2)	-0.032 (2)	-0.004 (2)

*Geometric parameters (Å, °)*

Br1—C9	1.892 (3)	C5—C10	1.466 (4)
Cl1—C17	1.743 (3)	C6—C7	1.431 (4)
S1—C11	1.721 (3)	C6—H6A	0.9300
S1—C12	1.728 (3)	C7—C8	1.390 (4)
O1—C4	1.365 (4)	C8—C9	1.377 (4)
O1—C3	1.379 (4)	C8—H8A	0.9300
O2—C4	1.206 (4)	C10—C11	1.359 (4)
N1—C12	1.297 (3)	C11—H11A	0.9300
N1—C10	1.395 (4)	C13—C14	1.458 (4)
N2—C12	1.361 (4)	C13—H13A	0.9300
N2—N3	1.366 (3)	C14—C15	1.376 (4)
N2—H1N2	0.81 (4)	C14—C19	1.383 (4)
N3—C13	1.283 (4)	C15—C16	1.376 (4)
C1—C2	1.363 (5)	C15—H15A	0.9300
C1—C9	1.377 (5)	C16—C17	1.364 (5)
C1—H1A	0.9300	C16—H16A	0.9300
C2—C3	1.382 (4)	C17—C18	1.363 (5)
C2—H2A	0.9300	C18—C19	1.382 (5)
C3—C7	1.395 (4)	C18—H18A	0.9300
C4—C5	1.455 (4)	C19—H19A	0.9300
C5—C6	1.347 (4)		
C11—S1—C12	88.34 (15)	C1—C9—Br1	119.5 (2)
C4—O1—C3	122.0 (2)	C8—C9—Br1	119.5 (3)
C12—N1—C10	109.6 (2)	C11—C10—N1	115.0 (2)
C12—N2—N3	119.1 (3)	C11—C10—C5	129.2 (3)
C12—N2—H1N2	122 (3)	N1—C10—C5	115.8 (3)
N3—N2—H1N2	118 (3)	C10—C11—S1	110.7 (2)
C13—N3—N2	115.4 (3)	C10—C11—H11A	124.6
C2—C1—C9	120.0 (3)	S1—C11—H11A	124.6
C2—C1—H1A	120.0	N1—C12—N2	121.2 (3)
C9—C1—H1A	120.0	N1—C12—S1	116.4 (2)
C1—C2—C3	119.7 (3)	N2—C12—S1	122.4 (2)
C1—C2—H2A	120.1	N3—C13—C14	121.3 (3)
C3—C2—H2A	120.1	N3—C13—H13A	119.3
O1—C3—C2	118.3 (3)	C14—C13—H13A	119.3
O1—C3—C7	120.6 (2)	C15—C14—C19	117.6 (3)
C2—C3—C7	121.1 (3)	C15—C14—C13	122.4 (3)
O2—C4—O1	115.7 (3)	C19—C14—C13	120.0 (3)



O2—C4—C5	125.6 (3)	C16—C15—C14	121.6 (3)
O1—C4—C5	118.7 (3)	C16—C15—H15A	119.2
C6—C5—C4	118.8 (3)	C14—C15—H15A	119.2
C6—C5—C10	121.3 (3)	C17—C16—C15	119.2 (3)
C4—C5—C10	119.9 (3)	C17—C16—H16A	120.4
C5—C6—C7	122.3 (3)	C15—C16—H16A	120.4
C5—C6—H6A	118.8	C18—C17—C16	121.4 (3)
C7—C6—H6A	118.8	C18—C17—C11	119.2 (3)
C8—C7—C3	118.3 (3)	C16—C17—C11	119.4 (3)
C8—C7—C6	124.2 (3)	C17—C18—C19	118.6 (4)
C3—C7—C6	117.5 (3)	C17—C18—H18A	120.7
C9—C8—C7	119.8 (3)	C19—C18—H18A	120.7
C9—C8—H8A	120.1	C18—C19—C14	121.6 (4)
C7—C8—H8A	120.1	C18—C19—H19A	119.2
C1—C9—C8	121.0 (3)	C14—C19—H19A	119.2
C12—N2—N3—C13	-174.7 (3)	C12—N1—C10—C5	178.7 (2)
C9—C1—C2—C3	-0.3 (5)	C6—C5—C10—C11	168.5 (3)
C4—O1—C3—C2	-178.7 (3)	C4—C5—C10—C11	-11.1 (5)
C4—O1—C3—C7	0.3 (4)	C6—C5—C10—N1	-9.3 (4)
C1—C2—C3—O1	176.8 (3)	C4—C5—C10—N1	171.1 (3)
C1—C2—C3—C7	-2.2 (5)	N1—C10—C11—S1	0.1 (3)
C3—O1—C4—O2	178.1 (3)	C5—C10—C11—S1	-177.7 (2)
C3—O1—C4—C5	-1.8 (4)	C12—S1—C11—C10	-0.5 (2)
O2—C4—C5—C6	-178.4 (3)	C10—N1—C12—N2	178.9 (3)
O1—C4—C5—C6	1.4 (4)	C10—N1—C12—S1	-1.0 (3)
O2—C4—C5—C10	1.2 (5)	N3—N2—C12—N1	-178.7 (3)
O1—C4—C5—C10	-179.0 (3)	N3—N2—C12—S1	1.2 (4)
C4—C5—C6—C7	0.4 (4)	C11—S1—C12—N1	0.9 (2)
C10—C5—C6—C7	-179.2 (3)	C11—S1—C12—N2	-179.0 (3)
O1—C3—C7—C8	-176.8 (3)	N2—N3—C13—C14	-179.1 (3)
C2—C3—C7—C8	2.2 (4)	N3—C13—C14—C15	2.8 (5)
O1—C3—C7—C6	1.5 (4)	N3—C13—C14—C19	-176.2 (3)
C2—C3—C7—C6	-179.5 (3)	C19—C14—C15—C16	-0.3 (5)
C5—C6—C7—C8	176.3 (3)	C13—C14—C15—C16	-179.3 (3)
C5—C6—C7—C3	-1.9 (4)	C14—C15—C16—C17	-0.8 (5)
C3—C7—C8—C9	0.3 (5)	C15—C16—C17—C18	1.4 (5)
C6—C7—C8—C9	-177.9 (3)	C15—C16—C17—C11	179.1 (2)
C2—C1—C9—C8	2.8 (5)	C16—C17—C18—C19	-0.8 (6)
C2—C1—C9—Br1	-175.8 (3)	C11—C17—C18—C19	-178.5 (3)
C7—C8—C9—C1	-2.8 (5)	C17—C18—C19—C14	-0.4 (6)
C7—C8—C9—Br1	175.8 (2)	C15—C14—C19—C18	1.0 (5)
C12—N1—C10—C11	0.6 (4)	C13—C14—C19—C18	180.0 (3)

Hydrogen-bond geometry ( $\text{\AA}$ ,  $^\circ$ )

$D-H\cdots A$	$D-H$	$H\cdots A$	$D\cdots A$	$D-H\cdots A$
N2—H1N2 $\cdots$ O2 <sup>i</sup>	0.81 (4)	2.16 (4)	2.957 (4)	169 (4)

C11—H11A···O2

0.93

2.35

2.878 (4)

115

---

Symmetry code: (i)  $-x+1/2, y+1/2, -z+3/2$ .